

MARTIN'S PARK: CONSTRUCTION UPDATE

May 9, 2019

This Martin's Park update will fill you in on the very exciting progress that has taken place since early April. As you can see, significant progress has been made!

And a HUGE announcement!

MARTIN'S PARK WILL BE OPENING JUNE 15, 2019!!!

(see opening flyer on next page)

Some of what has been done in the last month:

On the north side of the park (closest to Seaport Blvd.):

- Additional sidewalks have been installed.
- A tailing wall stones continue to be installed.
- Reflection garden water stones have been installed.
- Play surface slab installation. (safety surfacing to follow)

On the south side of the park (closest to the Children's Museum):

- Muds lab poured for swing and log climber.
- Sidewalks have begun to be poured.
- Boston Public Library granite installed at slide hill.

General park:

- **Trees are being installed! What an amazing impact this has. Birds have already moved in and can be heard on site!!**
- Bridge fabrication is beginning off site.
- Planting soil installation is continuing as planting is installed.
- Play surface slab installation. (safety surfacing to follow)
- Concrete curb forming and installation.

Here is what to look for over the next few weeks:

On the north side of the park (closest to Seaport Blvd.):

- Water play garden installation
- Telescope and small play element installation.

On the south side of the park (closest to the Children's Museum):

- Shade structure installation

General park:

- Additional tree planting
- Shrub and perennial planting
- Sidewalk completion
- Bridge installation

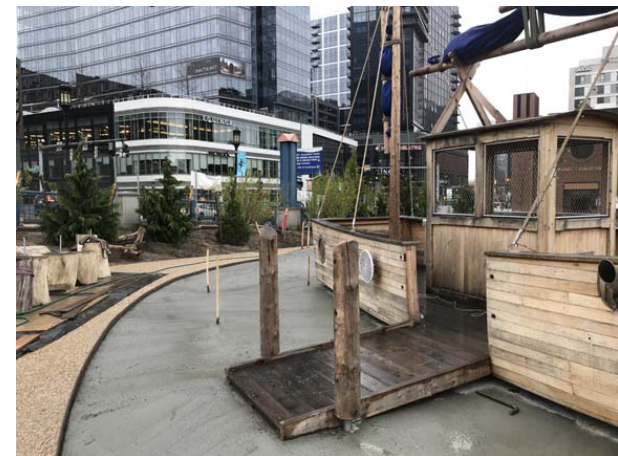
NORTH SIDE



North side view from adjacent building



Log seating area



Boat play area subsurface



Beginning tree planting



As always, please feel free to reach out for any questions or comments. Lauren.Bryant@boston.gov





Please join Mayor Martin J. Walsh, Governor Charlie Baker, and the Richard family for the

Saturday
June 15, 2019
at 11:00am

OPENING OF
MARTIN'S PARK
AT THE SMITH FAMILY WATERFRONT

Join us for the opening of Martin's Park - an inclusive park and play space that will provide enjoyment for generations of Boston's children, families and visitors.

64 Sleeper Street • South Boston, MA

SOUTH SIDE



South side view from adjacent building



Boston Public Library granite and slide hill



Aggregate paving



Play surfacing sub structure under log climber

OVERALL PARK



Harborwalk seating complete



Tree installation



Tree installation