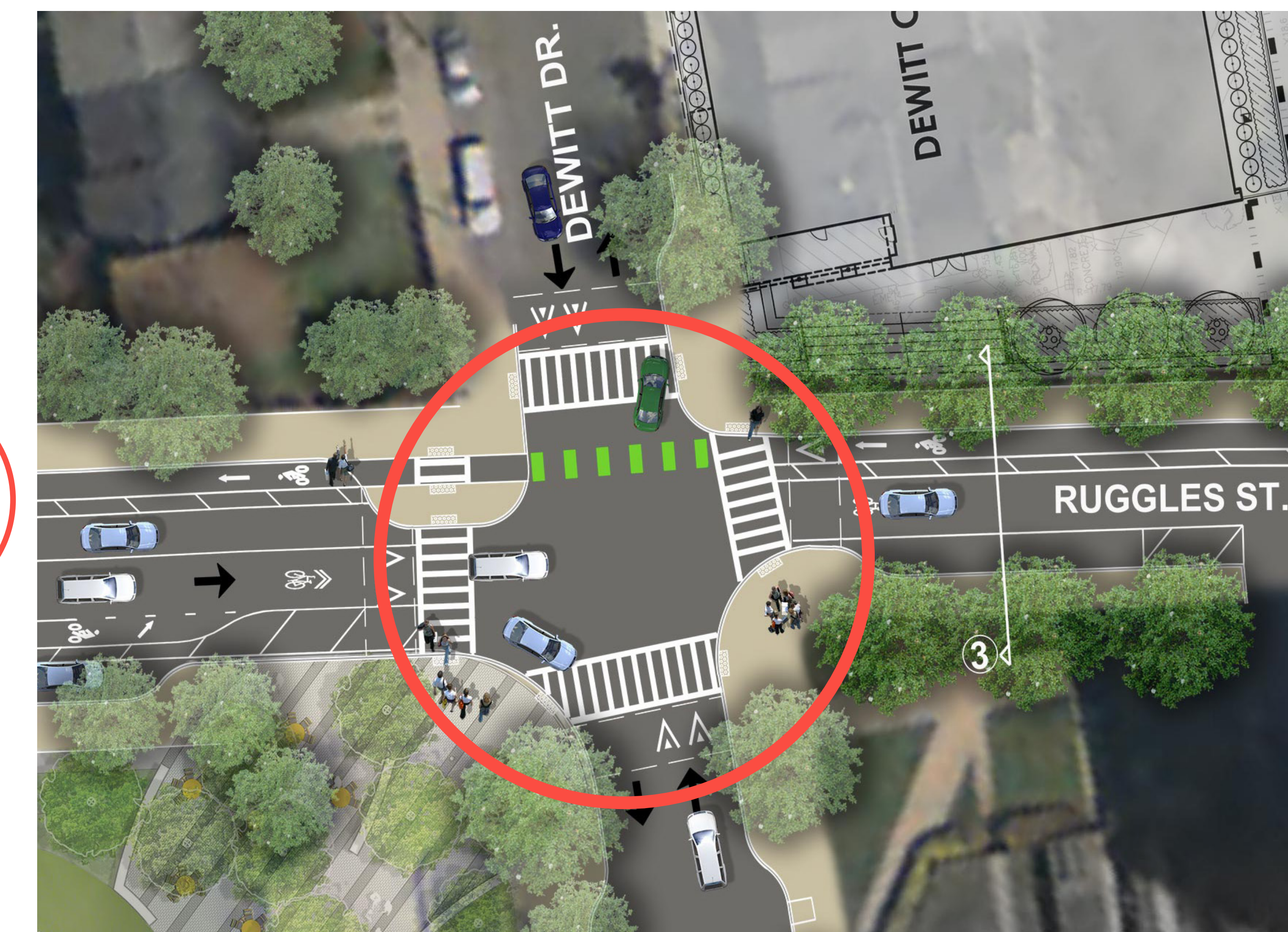


TRAFFIC CALMING AND STREETScape



Proposed Improvements: Tighter curb radii, curb-extensions, raised crosswalks, lane delineation, ADA compliant sidewalks.

Raised intersection at Ruggles and Dewitt.



Ruggles Street at Raynor Circle with proposed street improvements (curb extensions, crosswalks, bike lanes, lighting, street trees, raised crossing (Raynor Circle)).



Raised Intersection (Cambridge, MA)

Tighter Curb Radii - Slower turns for vehicles around corner and better sight distance.

Curb Extensions - Shorter pedestrian crossing and increased pedestrian visibility.

Raised Crosswalks - Visually emphasizes crosswalks, slows vehicles.

Lane Delineation - Narrowed travel lanes to encourage slower speeds, clear space allocation for bikes and vehicles.

Raised Intersections - Emphasize/highlight busier pedestrian crossing at park and community center, slow vehicles, make pedestrians more visible.

Accessibility - ADA compliance, wider sidewalks, safe sidewalk cross-slopes, smooth surface, wheelchair accessible curb ramps.

Signage - Alerts drivers to expect pedestrians, bicyclists, school children. Radar feedback sign alerts drivers regarding speed.



Radar Feedback Sign



Curb Extension and Bike Lane (Massachusetts Ave.)



Curb Ramp (Boston)



Lighting and Landscaping (Seaver Street)



BICYCLE ACCOMMODATIONS



Proposed Improvements: Protected contra flow bike lane, raised and marked crossings, protected buffered bike lanes, two-stage queue box.



Ruggles Street at Raynor Circle with proposed street improvements (protected contra-flow bike lane, protected bike lane, raised and marked bike crossing (Raynor Circle)).



Possible raised bike lane (Cambridge).

Protected Contra Flow Bike Lane - The bike lane in the contra flow direction is protected by a buffer area along the full length of the street.

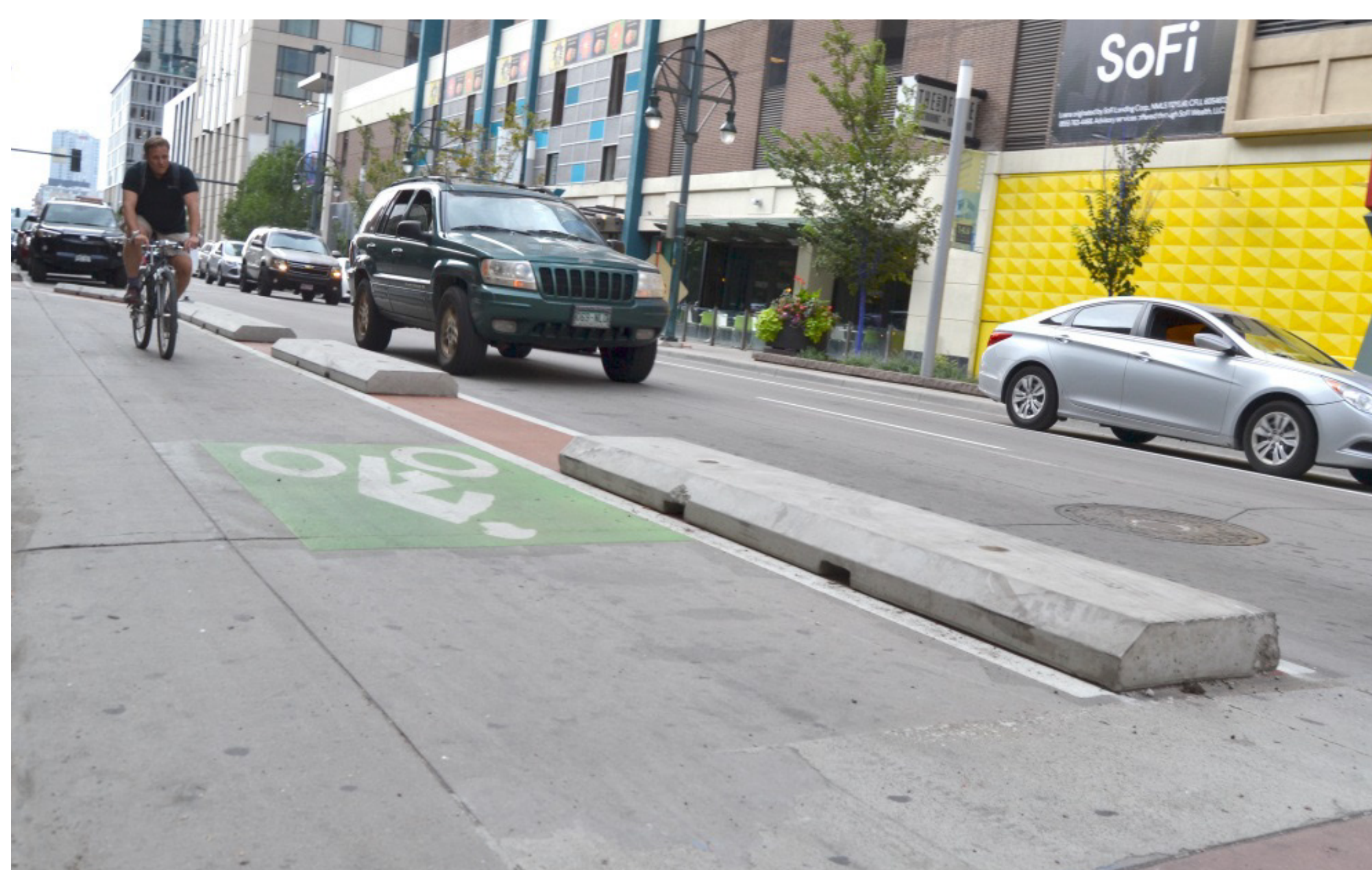
Raised Bike Crossings - On minor intersections, raised bike crossings calm traffic and alert drivers to crossing bikes and pedestrians.

Marked Bike Crossings (Green) - Raises awareness of bicyclists in conflict areas, guides bicyclists through intersections, makes bicycle movements more predictable.

Protected / Buffered Bike Lanes - Provides separation between bicyclists and vehicle traffic. Separation may be striped buffer, parked cars, delineators, or raised sidewalk level.

Sharrows - In mixed flow lanes, sharrows visually alert drivers that bicycles will ride in traffic.

Two-Stage Turn Queue Box - Provides a location at appropriate intersections for bicyclist to comfortably wait to make a turn. Helps guide bicyclists to bike lanes at junctions.



Possible Bike Lane Protection



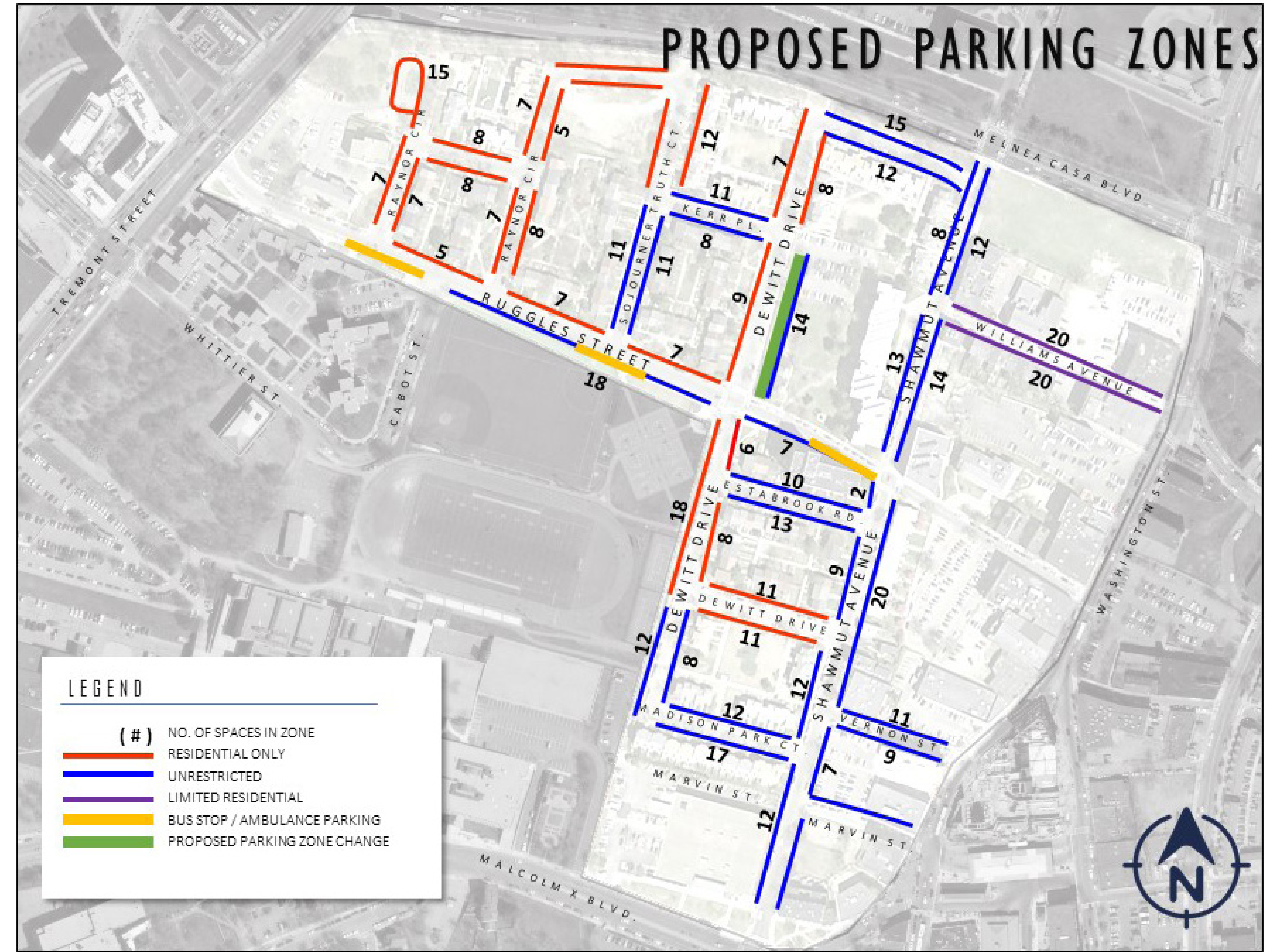
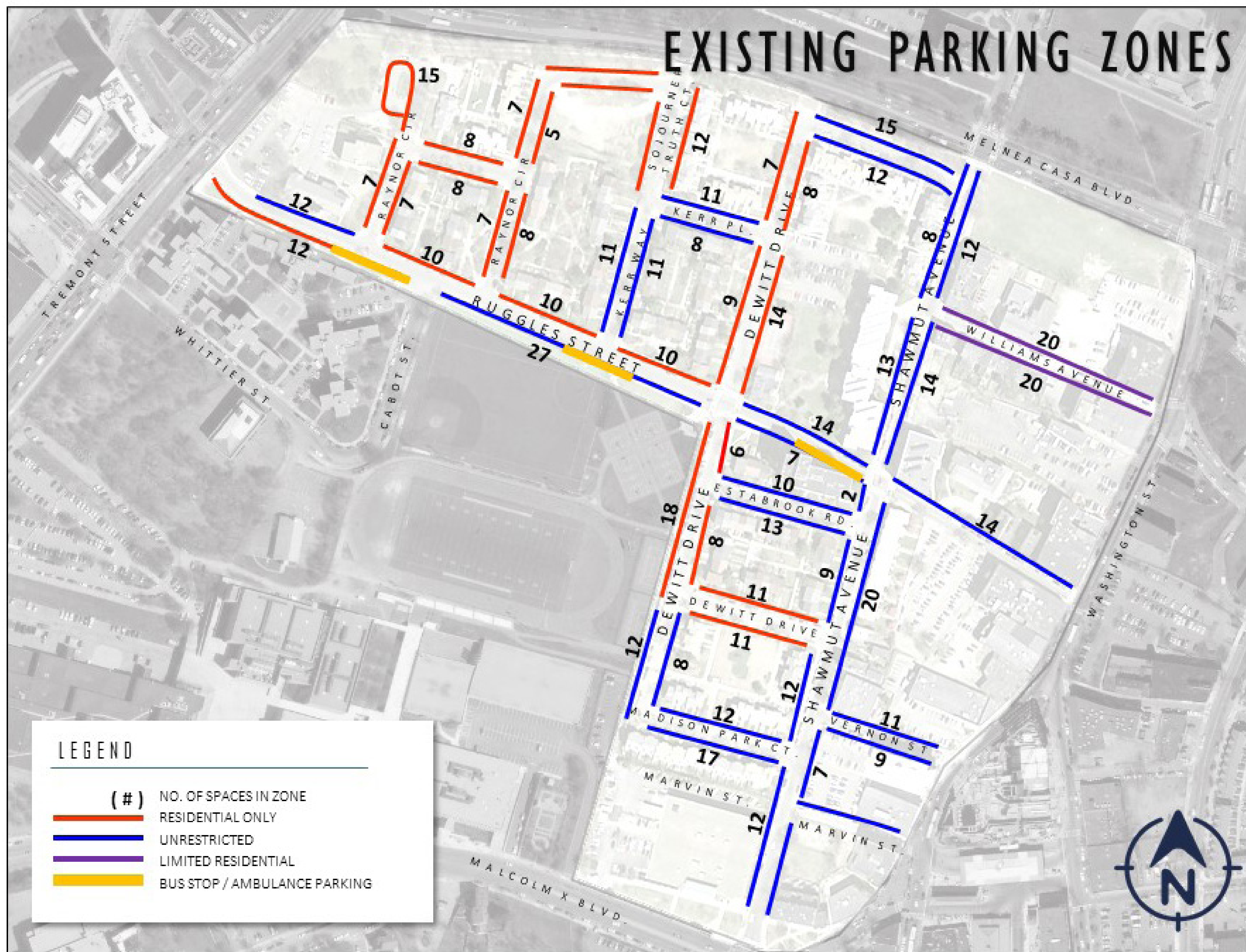
Marked bike crossing (Massachusetts Ave.)



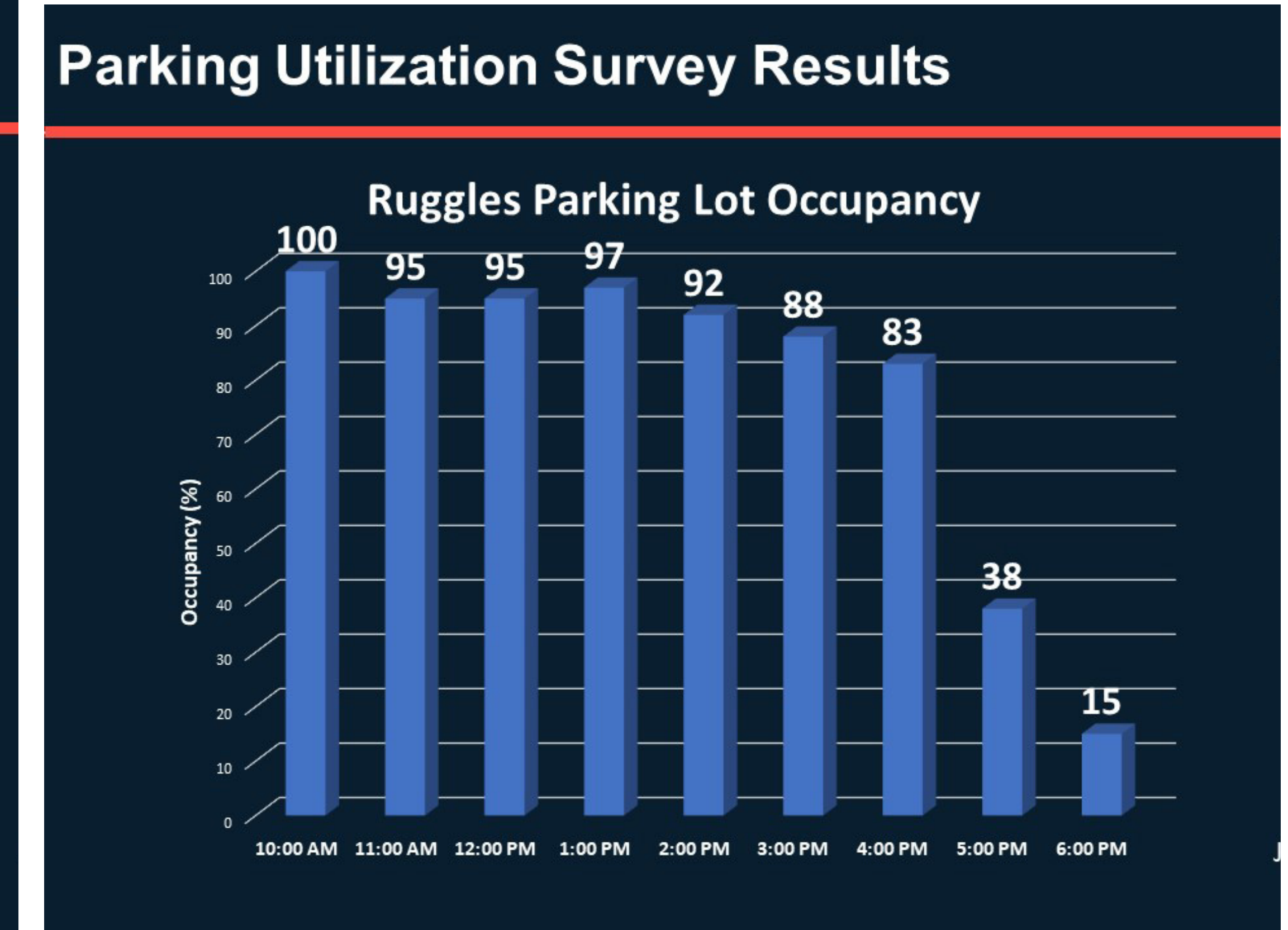
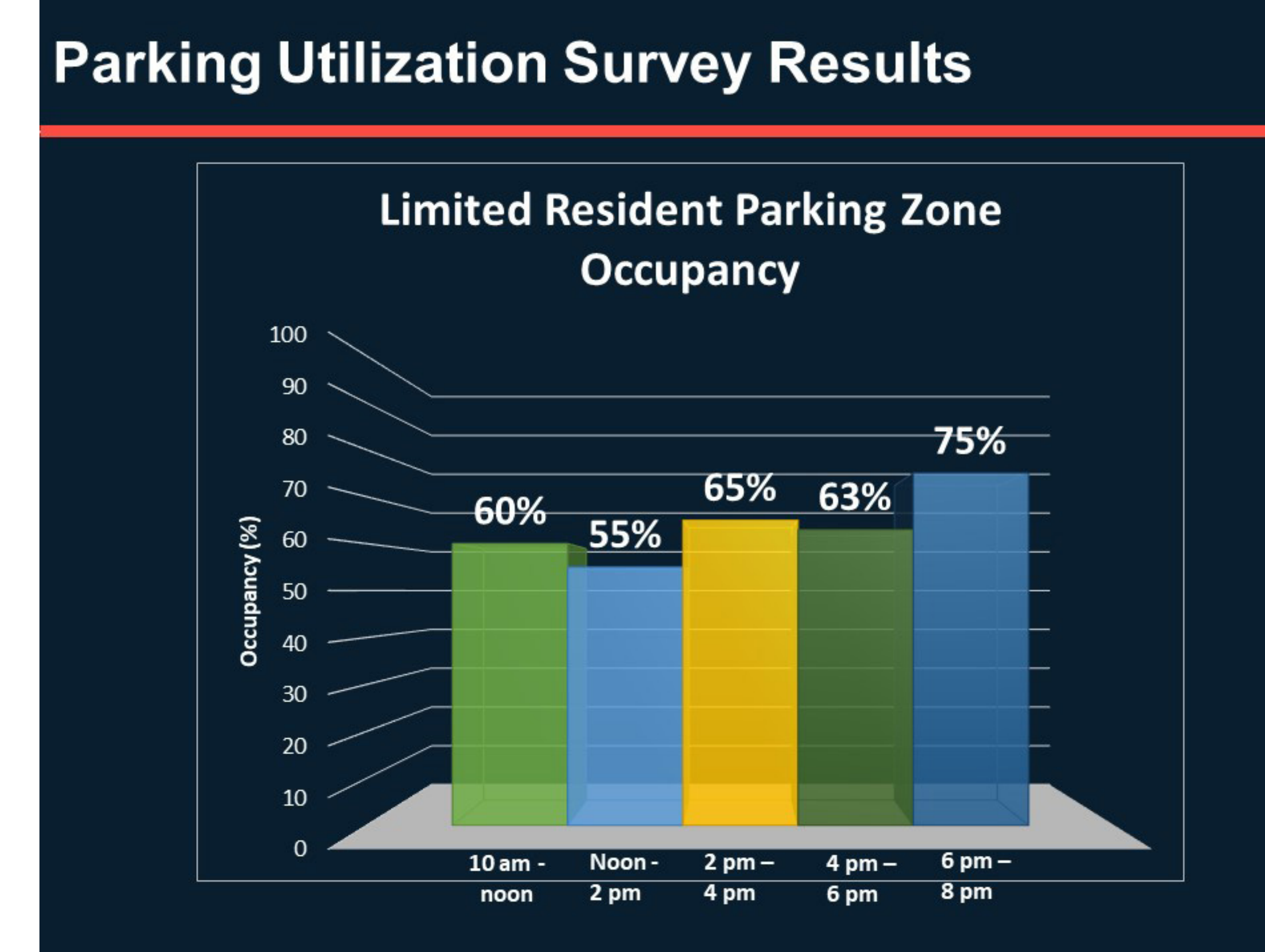
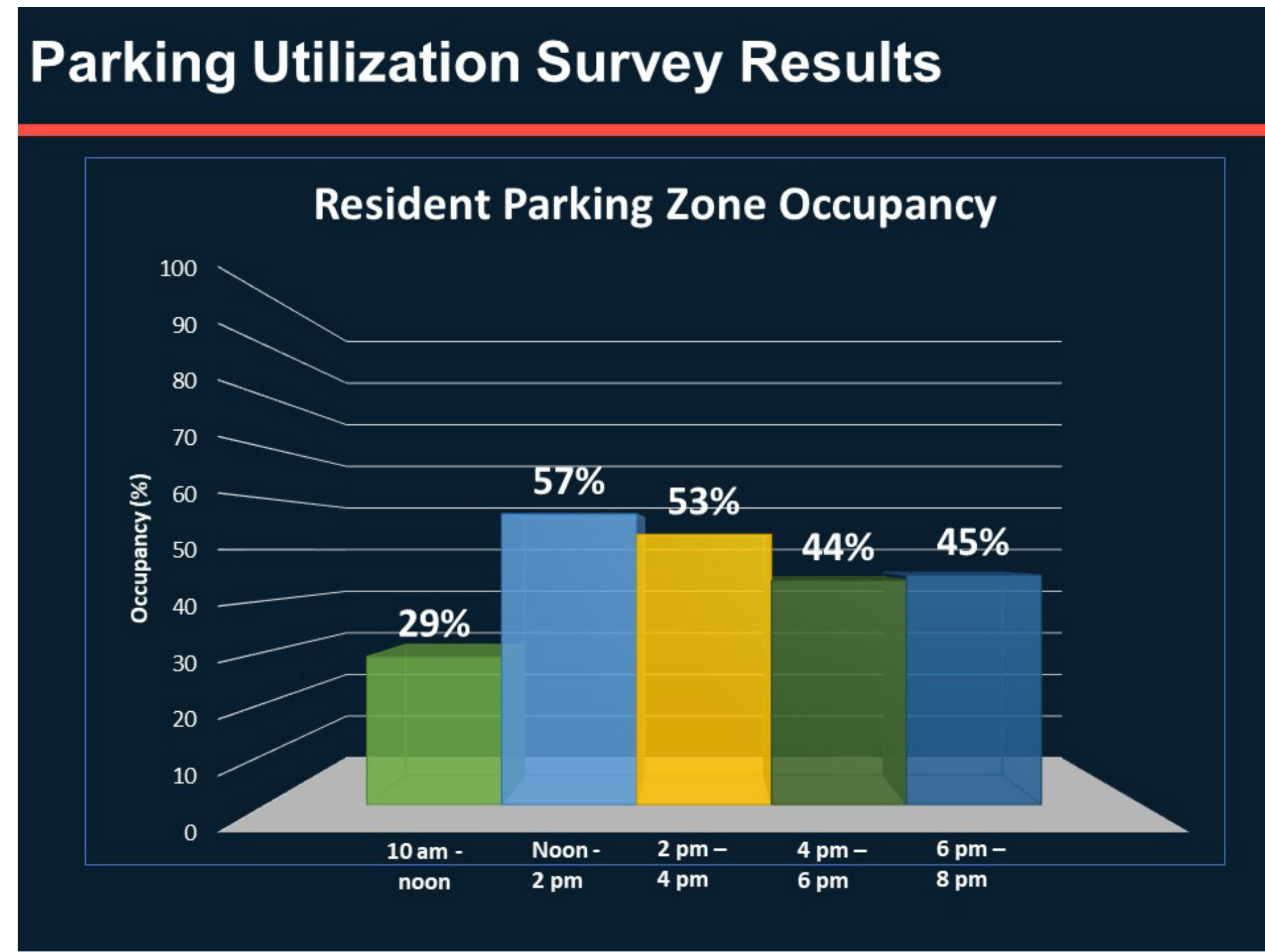
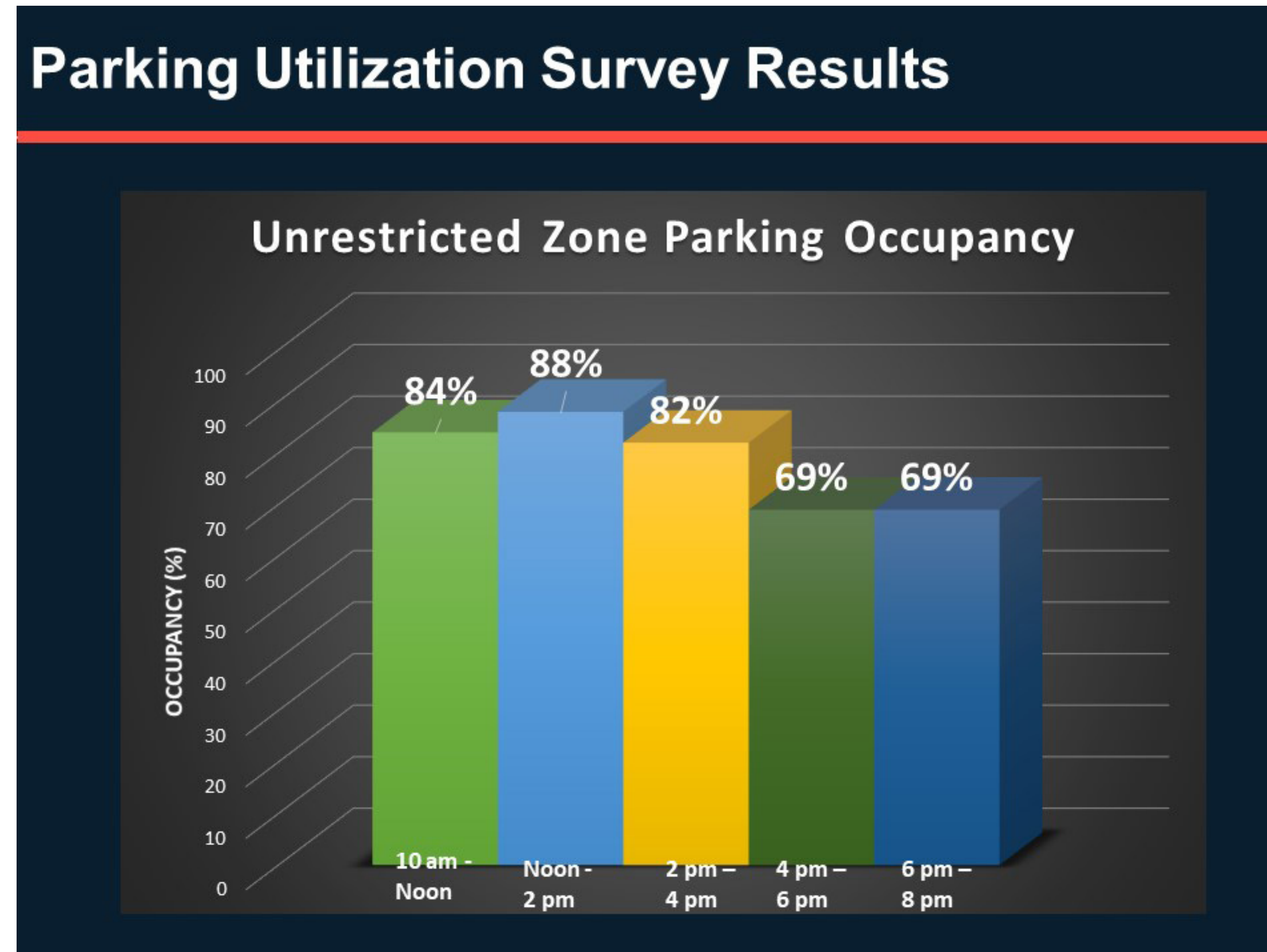
Sharrow (Museum Road) <http://calmstreetsboston.blogspot.com/>



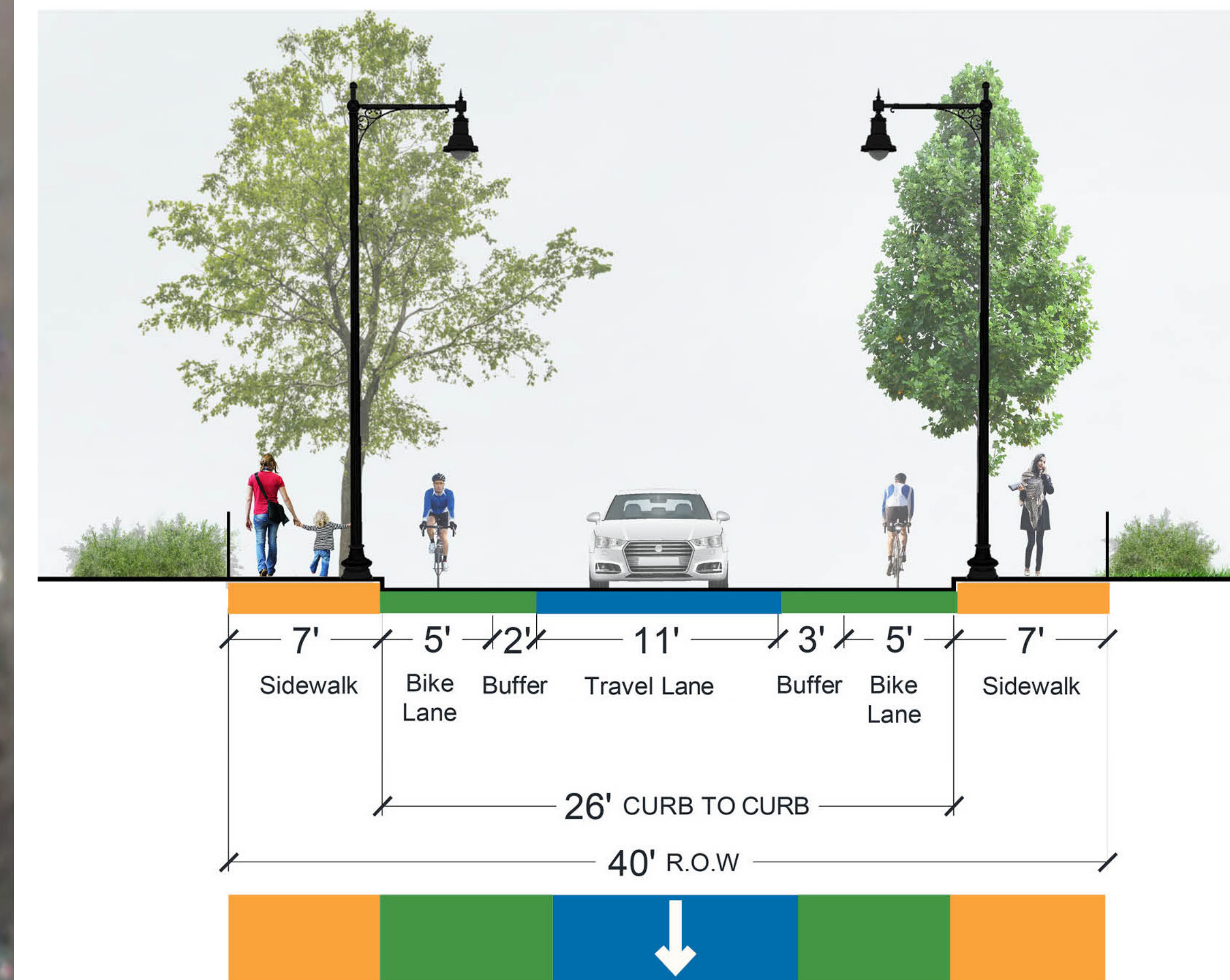
PARKING



66% OF CARS PARKED ON THE STREET ARE FROM OUTSIDE ROXBURY ZIP CODES

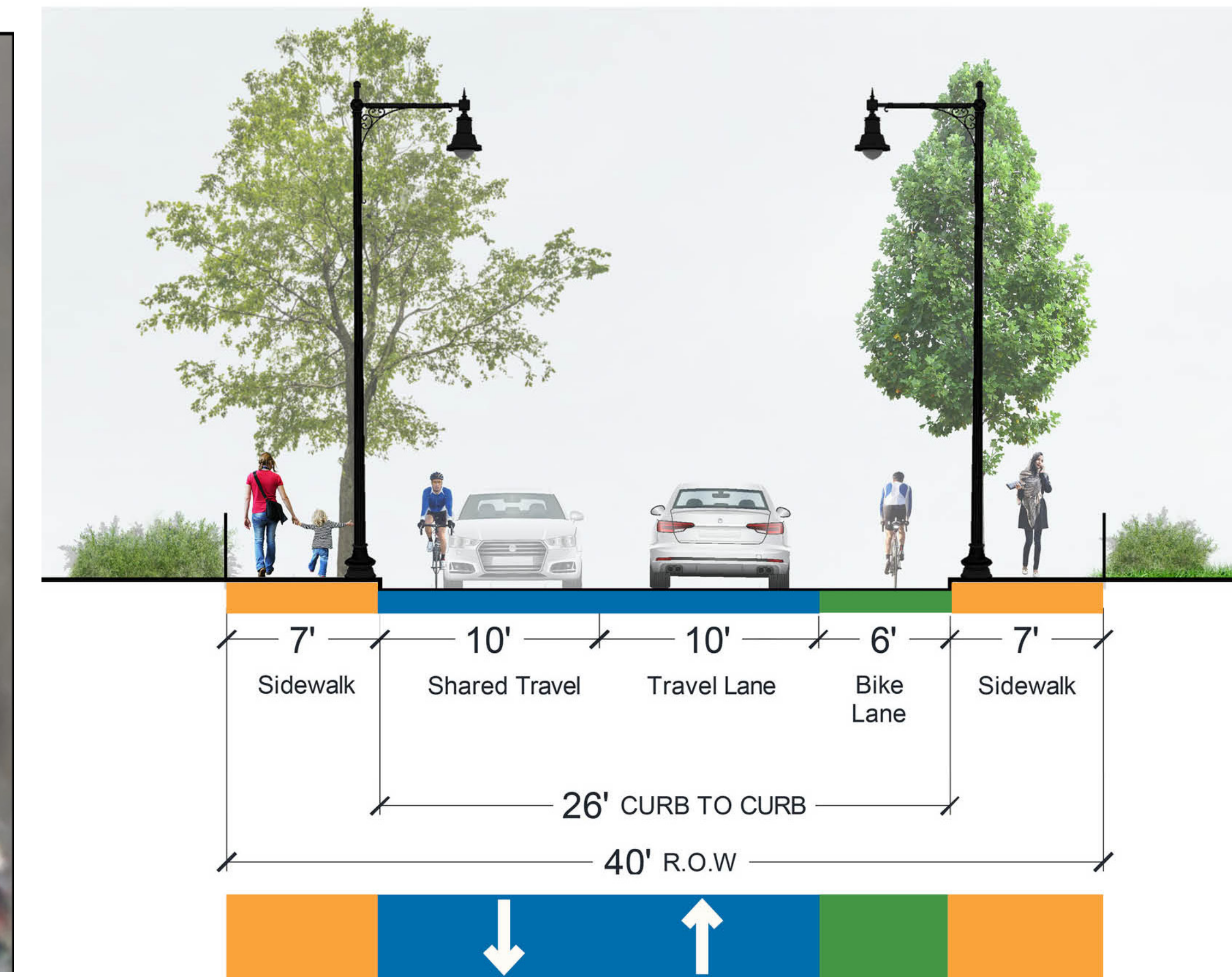
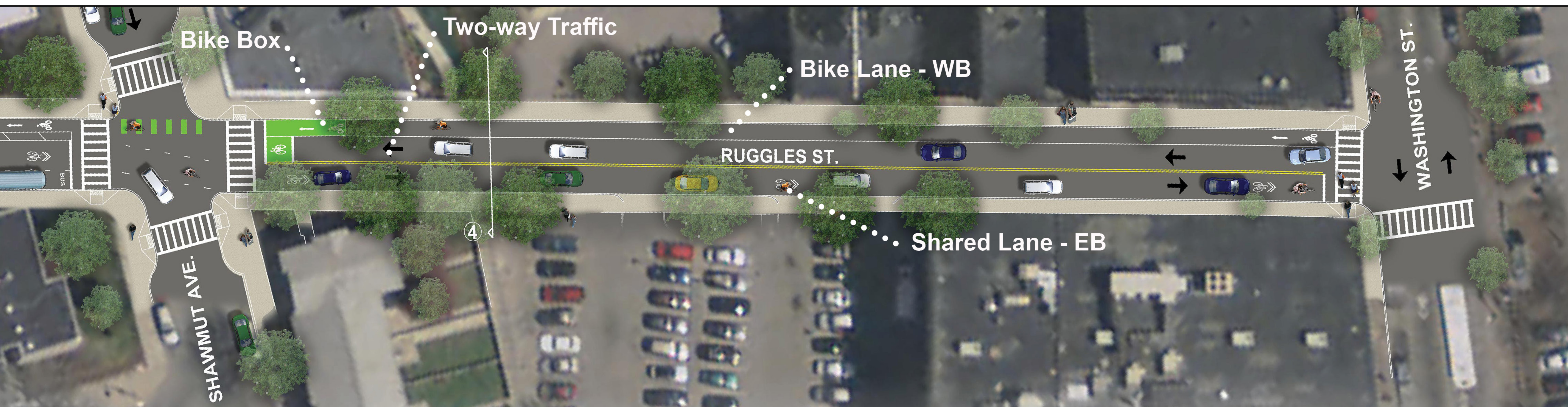


TRAFFIC FLOW: ONE-WAY VS. TWO-WAY



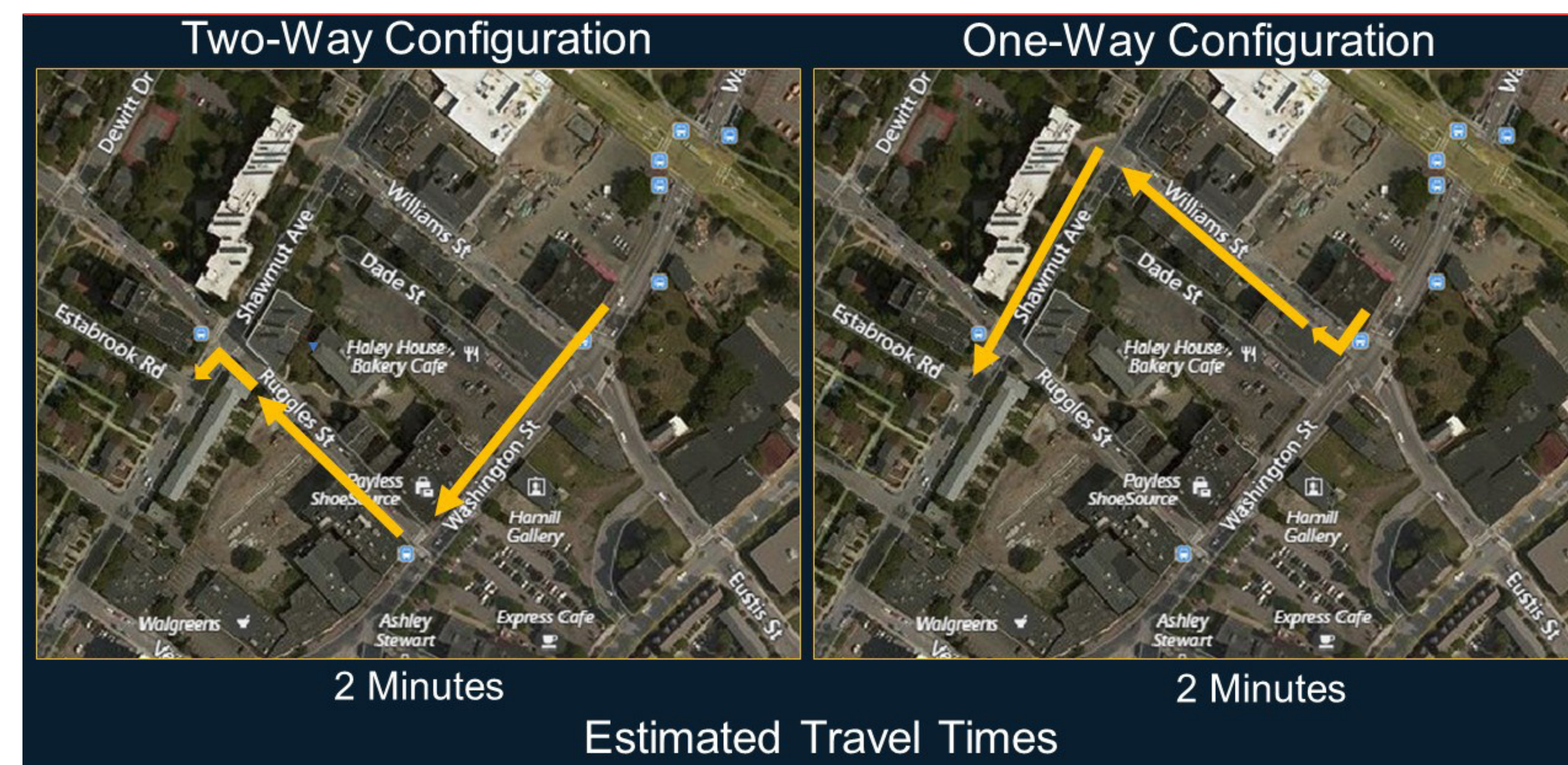
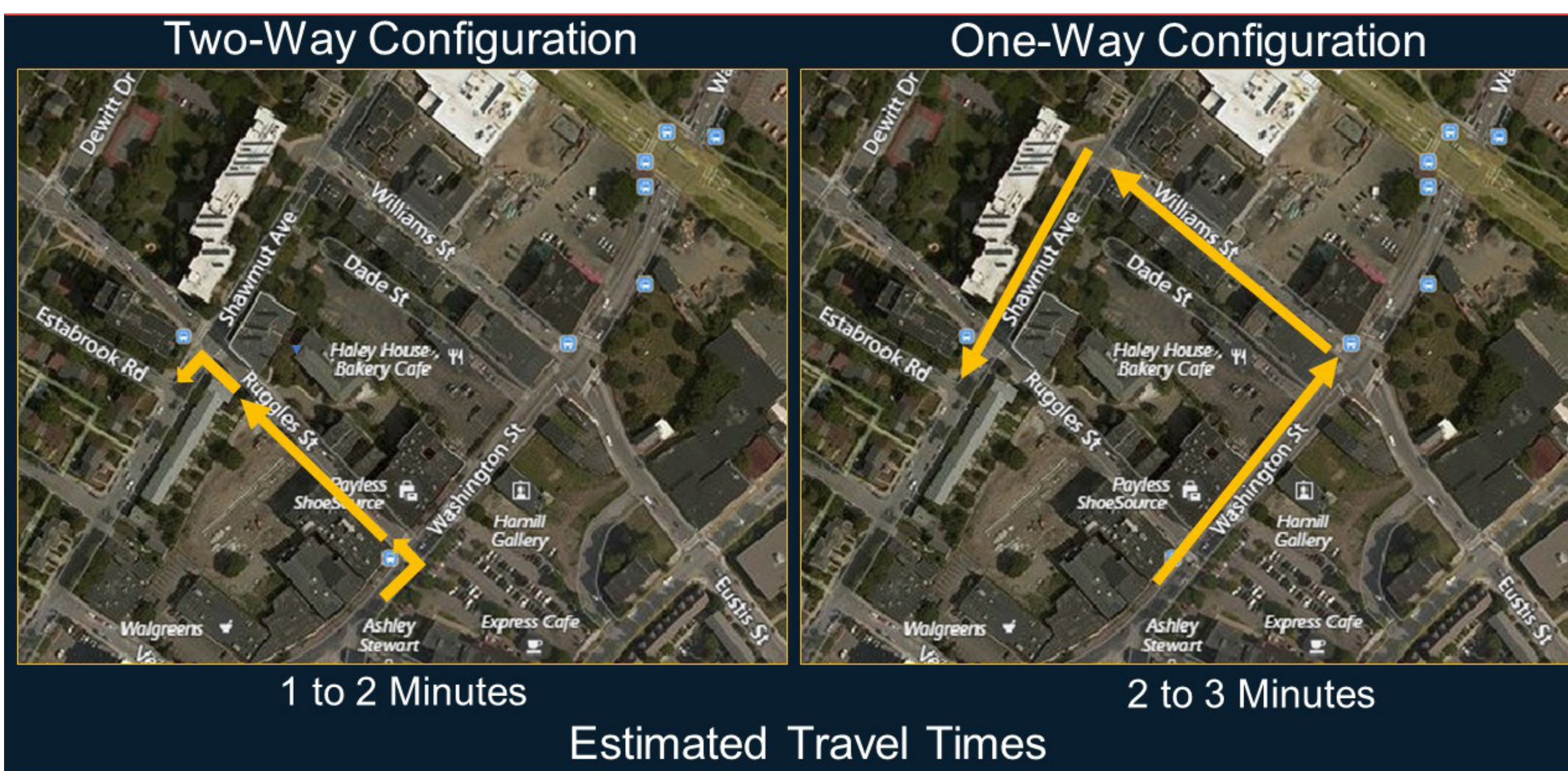
One-Way Option - Plan

One-Way Option - Section

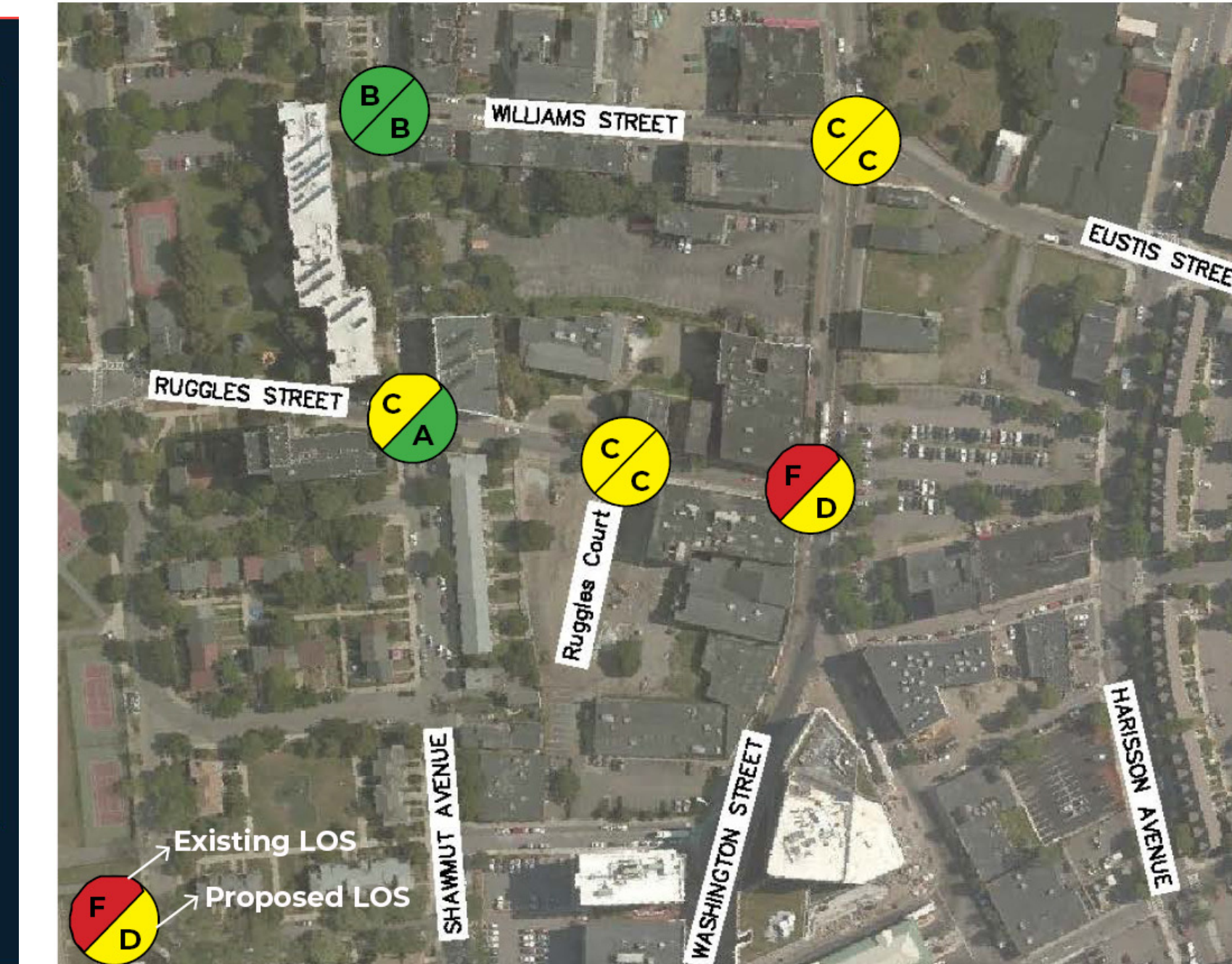


Two-Way Option - Plan

Two-Way Option - Section



Travel Time Comparison



AM Operations



PM Operations



RUGGLES STREET RECONSTRUCTION Neighborhood Meeting #3

November 15, 2018

City Of Boston
Martin J. Walsh, Mayor

