

ODOM SERENITY GARDEN



August 20, 2018
Boston Parks and Recreation



AGENDA

1

GREETING & PROJECT TEAM INTRODUCTION

2

PROJECT OVERVIEW & GOALS

3

PRESENTATION

4

LISTENING & DISCUSSION

5

CLOSING REMARKS & NEXT STEPS

PROJECT TEAM

Cathy Baker-Eclipse

Project Manager

Cathy.Baker-Eclipse@boston.gov or 617-961-3058

Marchelle Jacques-Yarde

Outreach Coordinator, External Affairs

marchelle.jacques-yarde@boston.gov or 617-961-3006

Roudnie Célestin

Office of Neighborhood Services

Roudnie.Celestin@boston.gov or 617-635-2677

Rebecca Bachand

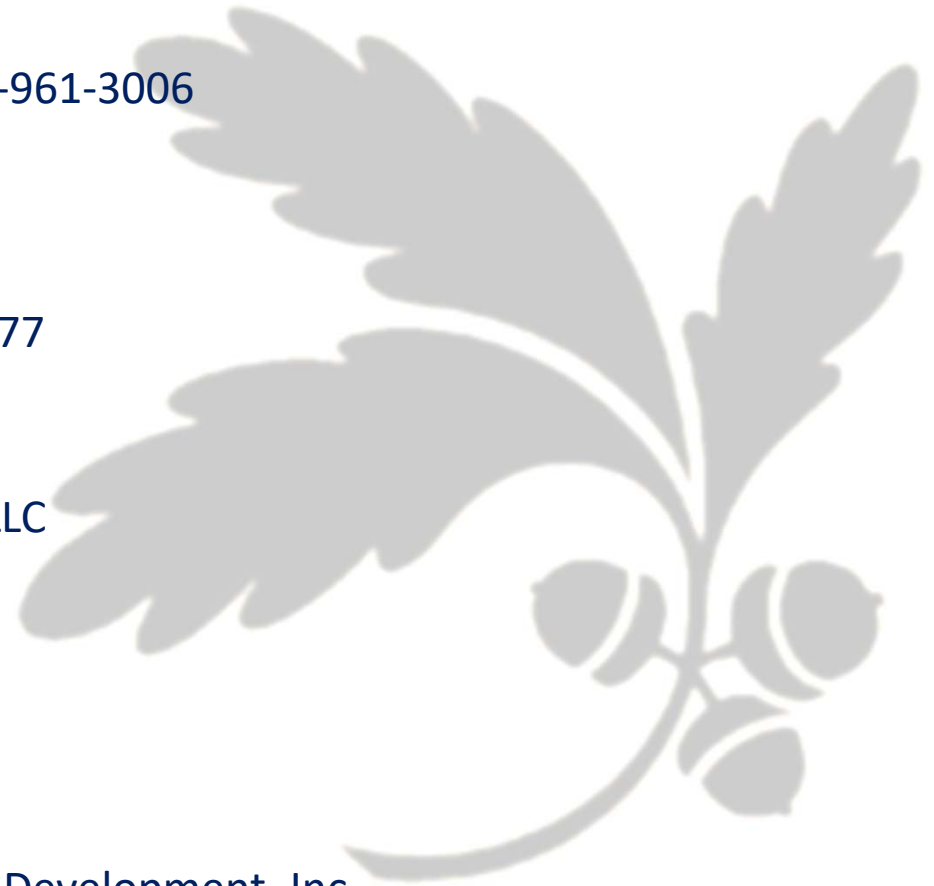
Principal, Landscape Architect, RBLA Design LLC

Lisa Alberghini

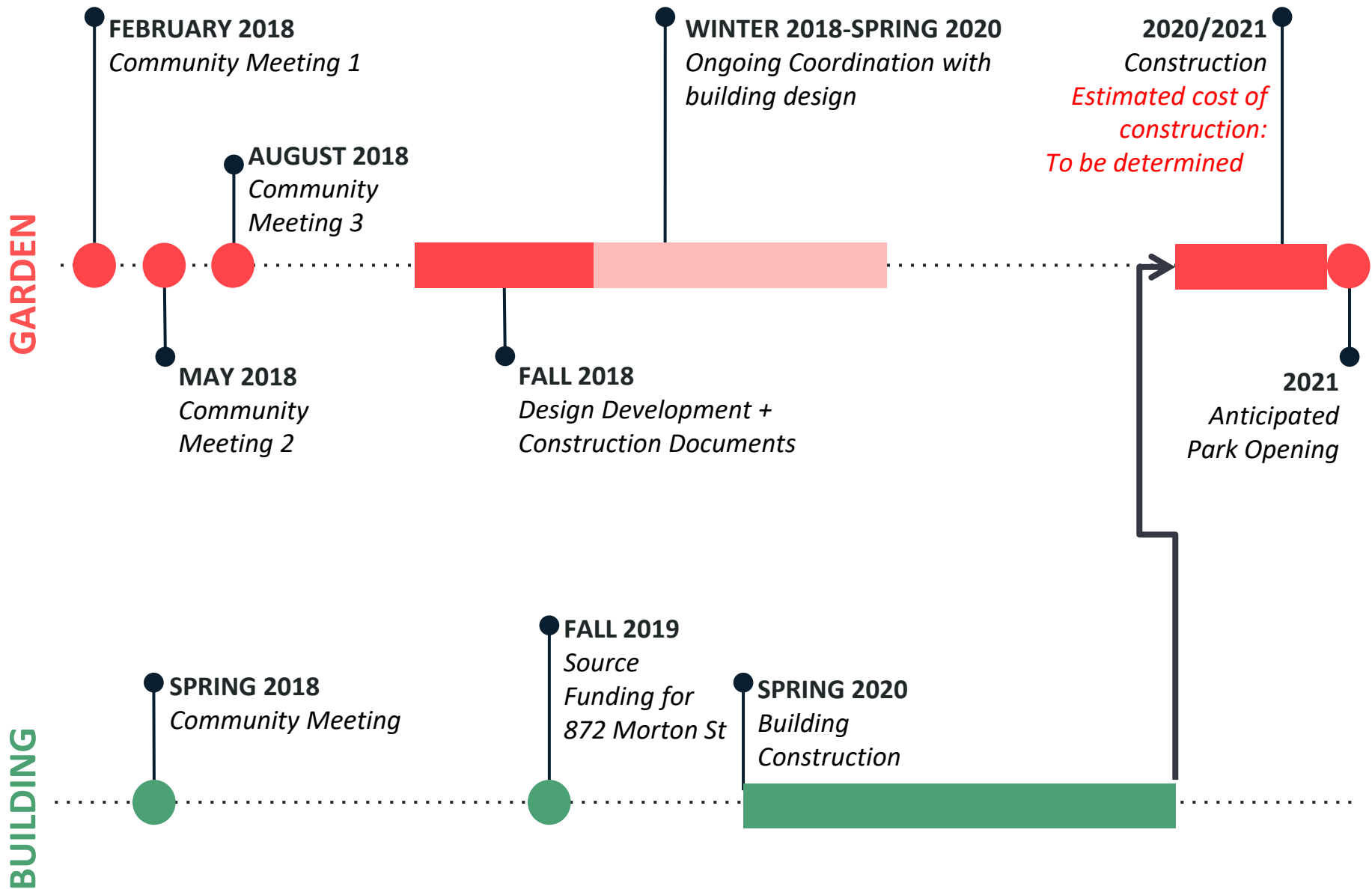
President, Planning Office for Urban Affairs

Donald Alexis

President, Caribbean Integration Community Development, Inc.



PROJECT SCHEDULE & FUNDING





City of Boston
Priorities

Safety Guidelines+
Regulatory Guidelines

**PARK
DESIGN**

Parks + Recreation
Goals

Community
Input

CITY OF BOSTON PRIORITIES

- Expanding walkable access to parks
- Addressing equity
- Climate resilience
- Health
- Housing and community building



PARK & RECREATION GOALS

- Accessible and available to all
- Diverse, balanced, and efficient mix of uses
- Meaningful and inclusive community engagement
- Adaptive and resilient landscapes
- Promote connections

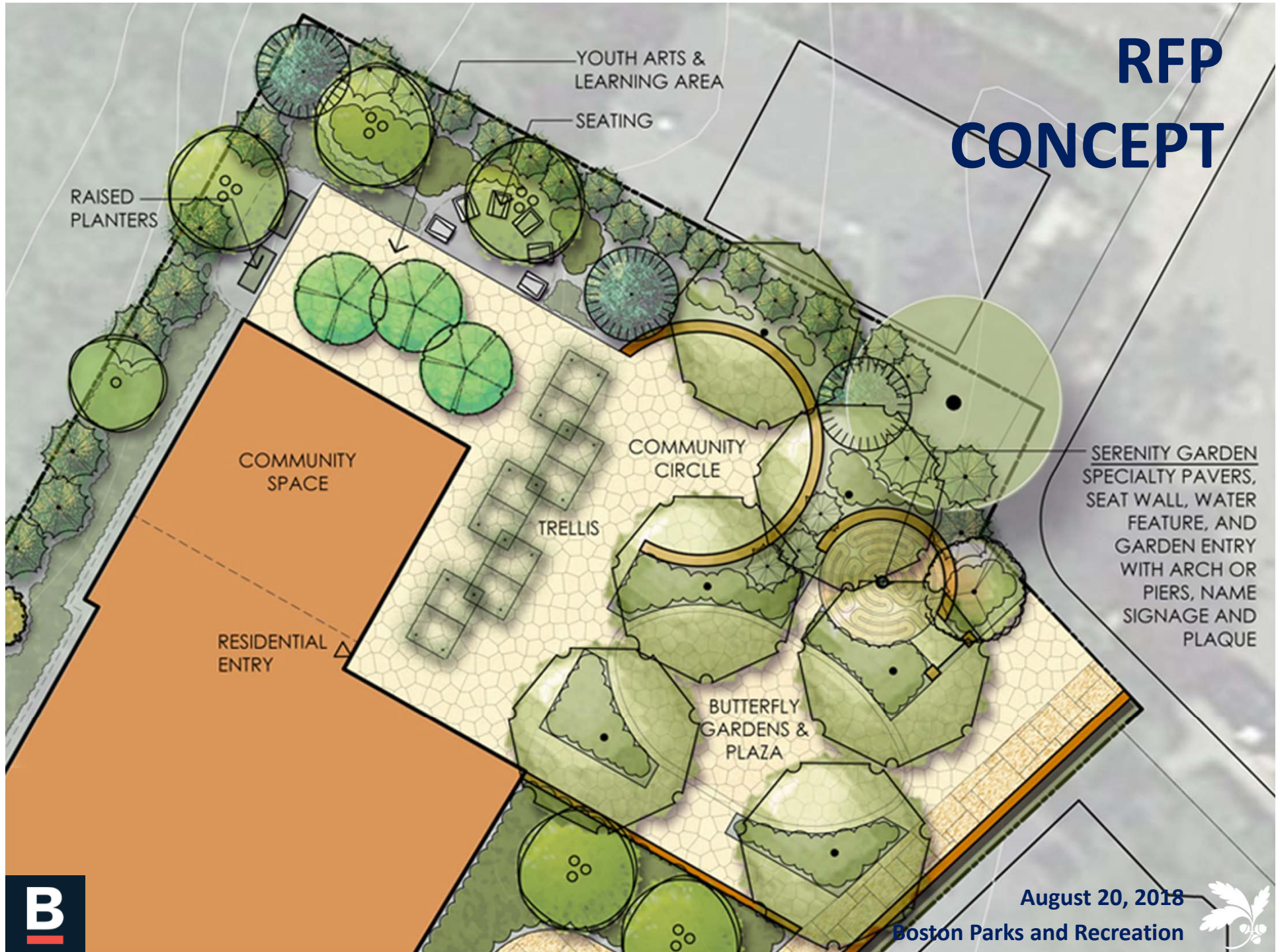


ODOM SERENITY GARDEN GOALS

- Improve the neighborhood's public safety and public health environment.
- Create a community teaching and healing space for the youth and families in the neighborhood.
- Enjoy nature's elements.
- Realize the healing power of green spaces.
- Honor Steven's heart towards peace.



RFP CONCEPT



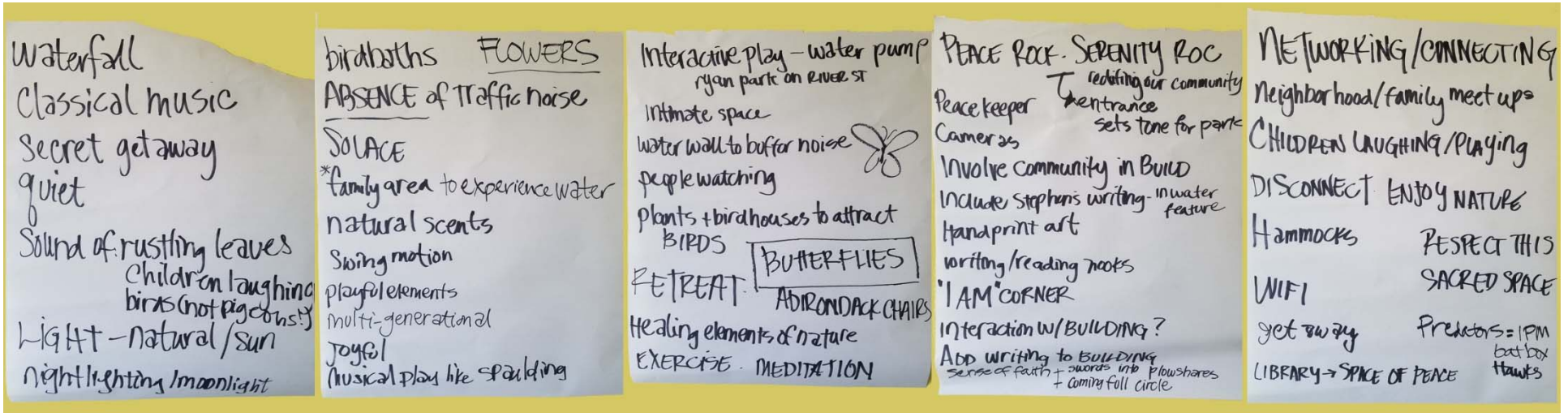
August 20, 2018

Boston Parks and Recreation



WHAT WE HEARD

- Create a sense of peace and security, set “rules” at entrance
- Allow varying levels of public vs private feeling space
- Incorporate nature, art, and Steven’s writing
- Create opportunities for community engagement and interaction with the space during and after construction
- Balance Peaceful / Active / Family-Friendly



VISIONING

CALM

Serenity
Solace
Peace
Quiet
Secret
Retreat

ACTIVE

Children
Community
Family
Music
Laughter
Joy

GATHER

Interact
Exercise
Neighbor Meet-up
People Watch
Network
WiFi

SET TONE

Arrival
Circulation
Connections

VISIONING



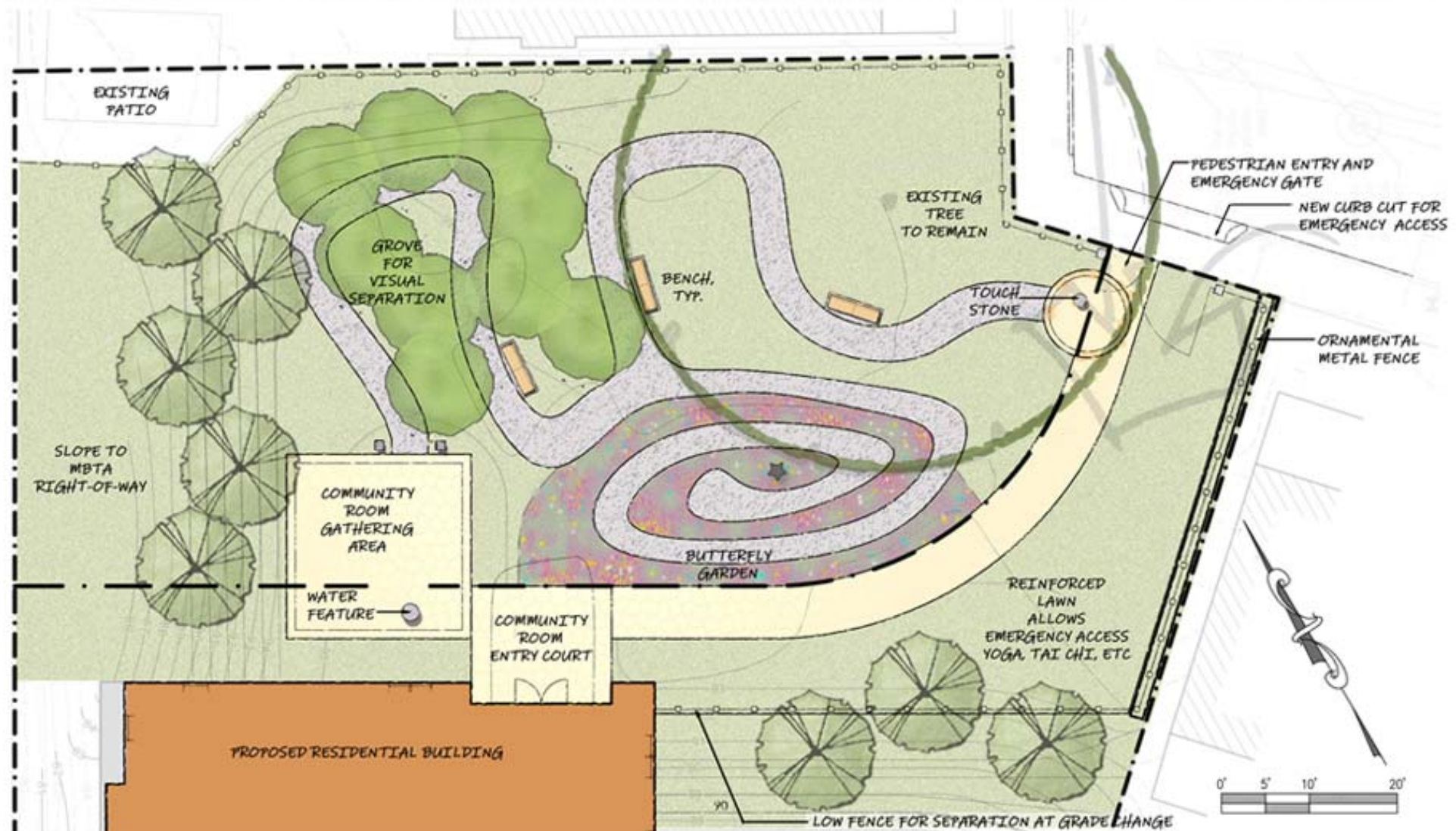


PRECEDENTS



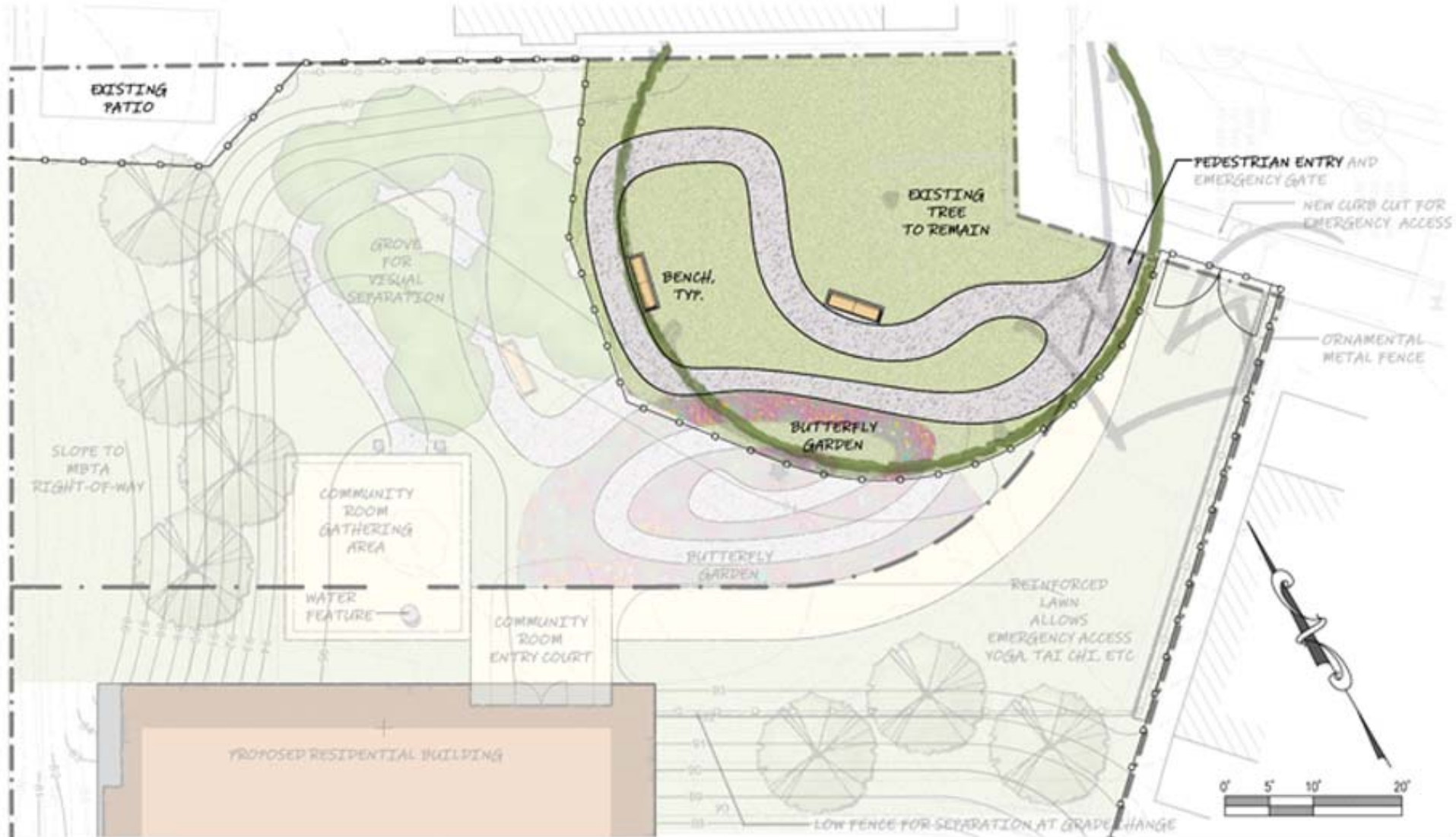


CONCEPT

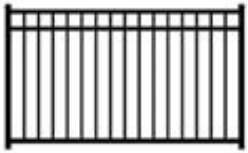




INTERIM



MATERIALS



Ornamental Metal Perimeter Fence



Solid Board Fence for Screening





LISTENING & DISCUSSION

Help us build great parks.
Let us know what matters to you.

GROUP AGREEMENTS FOR A FAIR, PRODUCTIVE CONVERSATION

- Be respectful and use respectful language
- Share airtime so everyone gets a chance to be heard
- If you disagree, consider asking a question rather than arguing to prove your point
- It's okay to disagree, but don't personalize it. Focus on the idea, not the person
- Speak up if the process doesn't seem fair
- If you talk about people who are not here, don't use their names
- Speak for yourself, not the group
- We all share responsibility for making the group productive
- Listen to each other



THANK YOU!

For questions, maintenance requests or
concerns regarding any of our
parks contact 311



The logo is a white, bold, sans-serif letter "B" centered within a black square. A thin red horizontal line is positioned below the letter "B".

August 20, 2018
Boston Parks and Recreation

