



# Welcome!

Fenway-Yawkey Multiuse Path

Boston and Brookline, MA | #607888

## DESIGN PUBLIC HEARING

Harvard Vanguard Kenmore

133 Brookline Ave, Boston

November 29 | 6:30 PM

# Introduction

- MassDOT: Larry Cash, Supervising Project Manager
- City of Boston: Charlotte Fleetwood, Planner
- Design Team:
  - HDR, Inc: Todd Undzis, PE – Project Manager; Civil, Structural, Railroad
  - Nitsch Engineering: Fayssal Hussein, PE, PTOE, LEED Green Associate – Principal; Civil, Survey
  - Crosby Schlessinger Smallridge: Deneen Crosby – Principal; Landscape Architecture
  - Epsilon Associates: Jeremy Fennell, PWS, CWS, CESSWI, Senior Scientist; Environmental Permitting

# History of Public Outreach

- **Community meetings that led to the Fenway-Longwood-Kenmore Transportation and Pedestrian Action Plan (2007-2009)**
- **Fenway-Longwood-Kenmore Neighborhood Transportation Forum October 5, 2009**
- **Emerald Necklace Access Committee meetings (ongoing)**
- **Coordination meetings with abutters 2013-present**



# Project Team



## **Boston Transportation Department**

Project Proponent

## **HDR, Inc.**

Responsible for Design

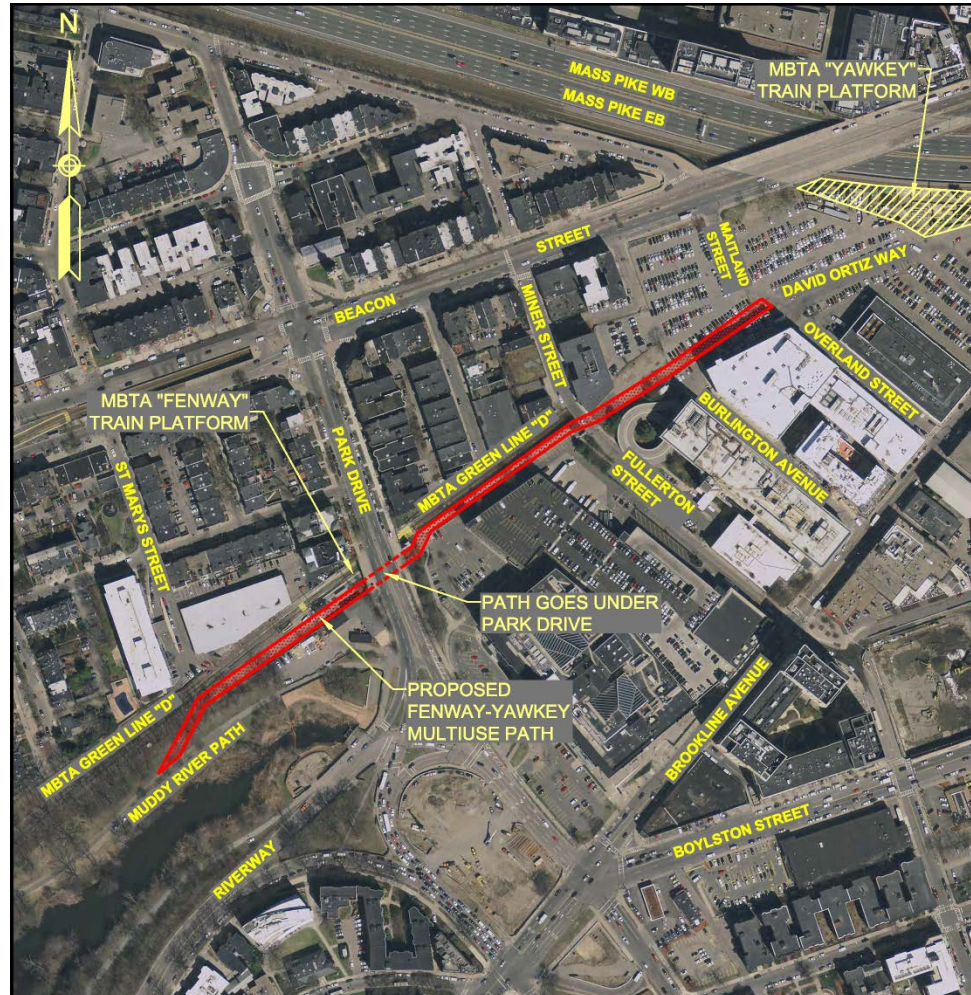
## **MassDOT's Highway Division**

Responsible for administering the Design Process and providing Resident Engineer Services

## **Federal Highway Administration**

Federally funded through TIP

# Project Area



**Limits of Work**

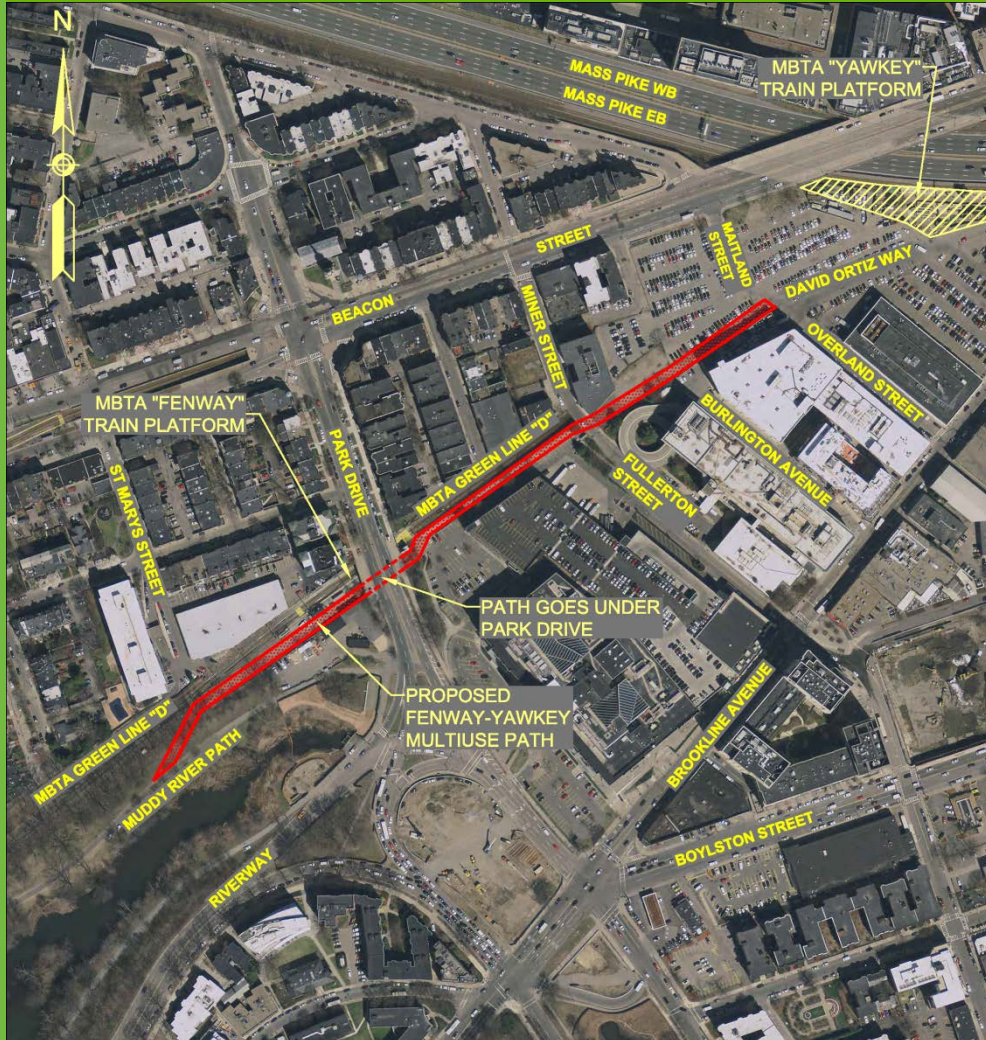
**Why do we need  
this project?**



# Existing Issues

- **Cyclist and Pedestrian Safety:** Park Drive at the Muddy River is a high traffic roadway with many conflicting movements that make it difficult for cyclists and pedestrians to cross.
- **Growth:** The path is in one of the fastest growing parts of the city, with over 400 new residential units planned and over 1.5 million additional square feet of development.
- **Congestion:** Traffic in the area of Kenmore Square and Fenway Park is congested during peak hours and especially on game days. The Green Line also often runs at capacity. Better active transportation alternatives are needed.

# Existing Issues (cont.)



- **Cyclist and Pedestrian Safety**
- **Growth**
- **Congestion**



## Existing Conditions



## Existing Conditions



# Project Goals

- **Cyclist and Pedestrian Safety:** Extend the low-stress, family friendly greenway network (the “Emerald Network”) to Fenway Park and Kenmore Square; Provide a safe and comfortable crossing under Park Drive.
- **Growth:** Create new options for residents to travel by active transportation to and from jobs in the LMA, Kenmore Square and other parts of the city and region.
- **Congestion:** Allow people to avoid streets and crowded subways at peak hours and on game days; create new pedestrian access to Fenway and Yawkey stations; complement the expanding bike share network.

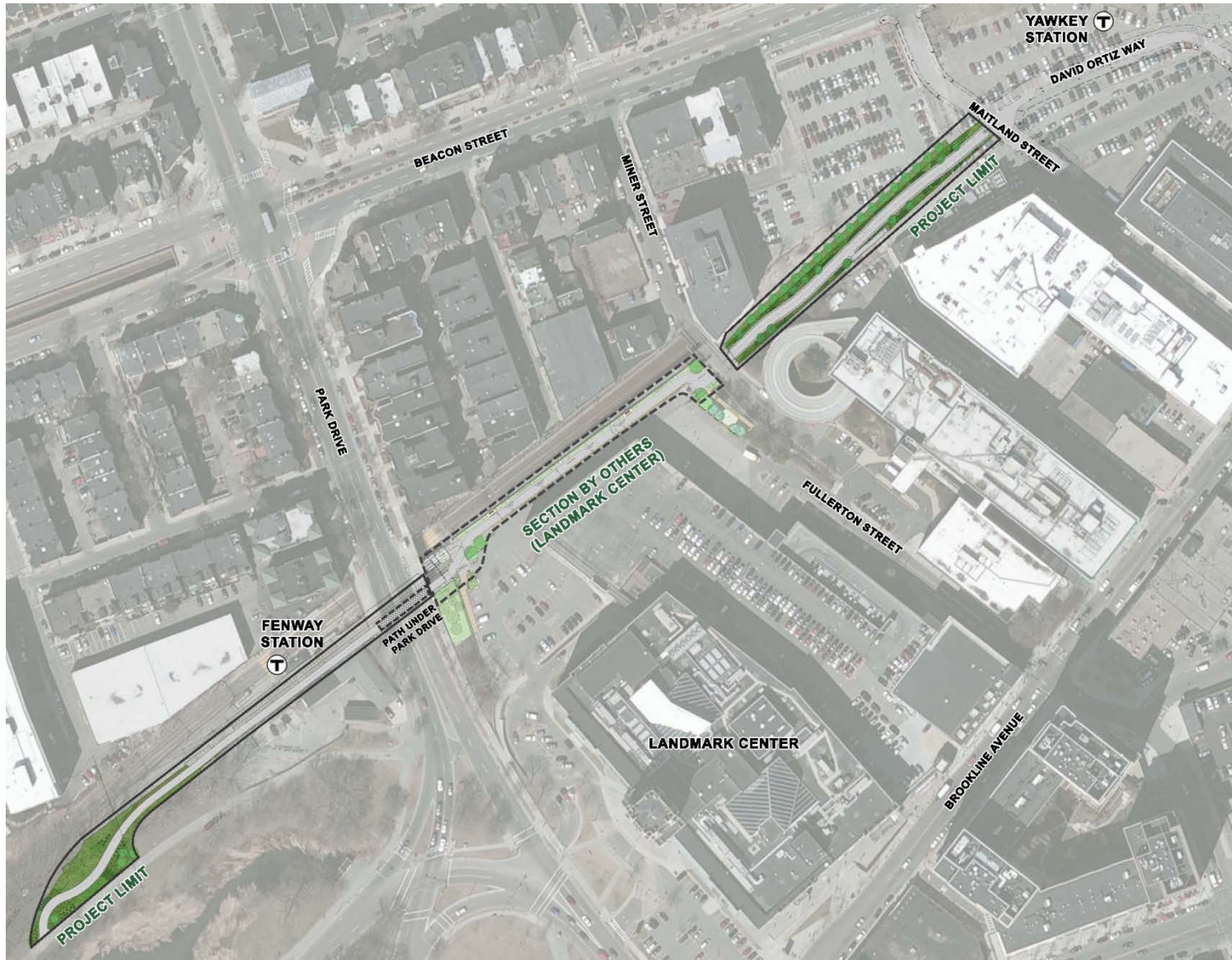
## Extension of Emerald Network



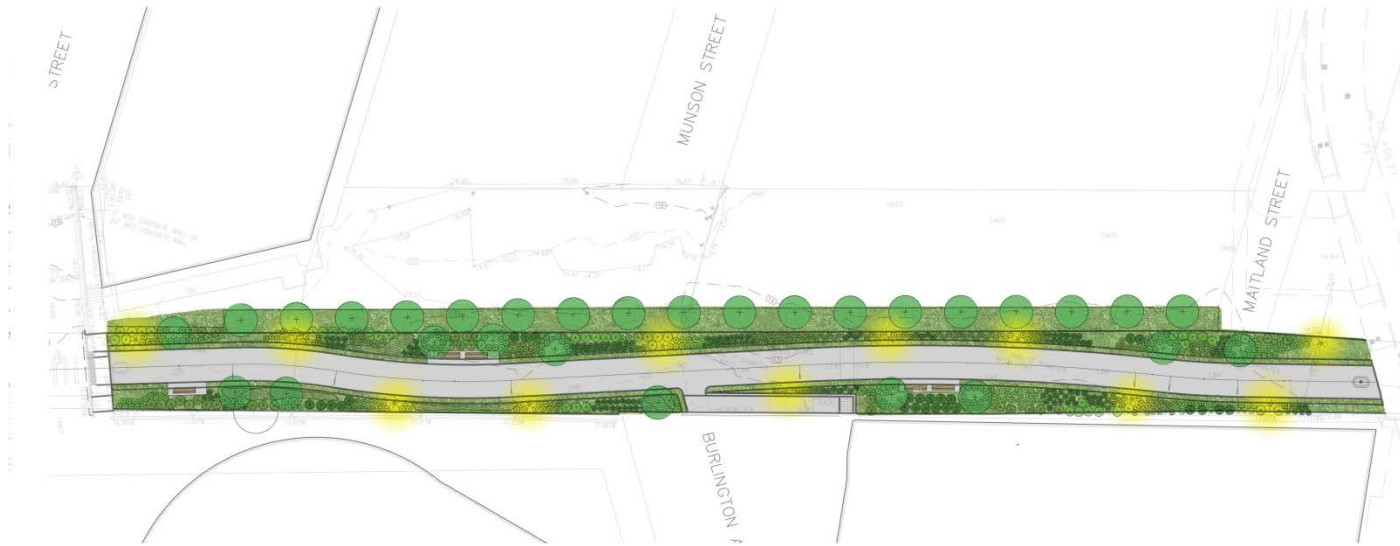
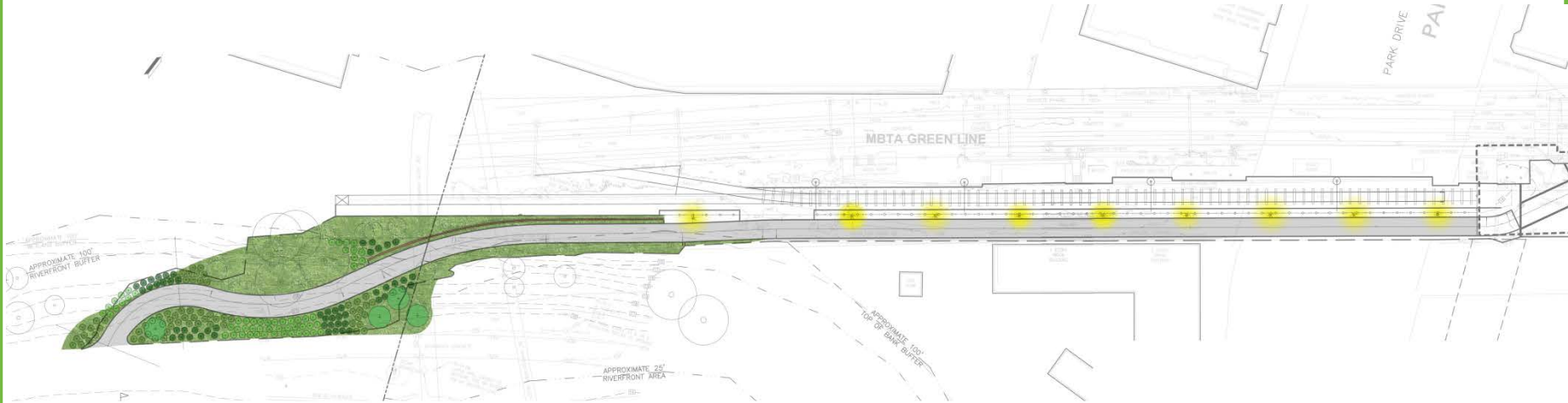
# Project Scope

- **Extend Muddy River path in Brookline to a path adjacent to the Green Line D ROW**
- **Provide new access to Fenway and Yawkey Stations**
- **Coordinate with MBTA on relocation of an MBTA Maintenance of Way track adjacent to Fenway Station**
- **Construct landscaped sections in Brookline and Boston Parks and between Landmark Center and Maitland Street; include appropriate plantings in the Historic Emerald Necklace**
- **Provide lighting between Maitland Street and the Emerald Necklace; the Emerald Necklace is not lit**
- **Coordinate with the Landmark Center project**

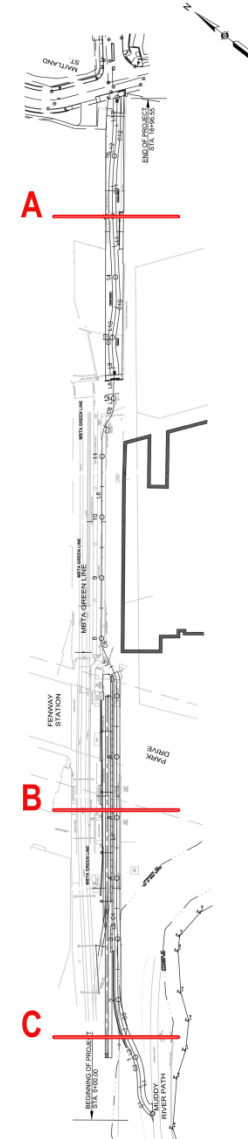
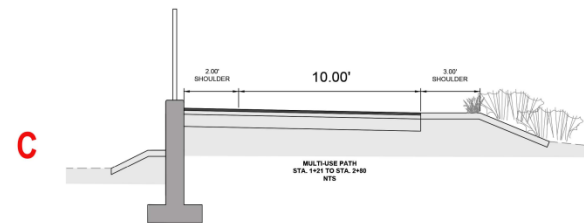
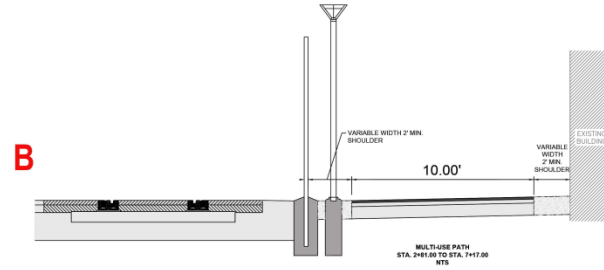
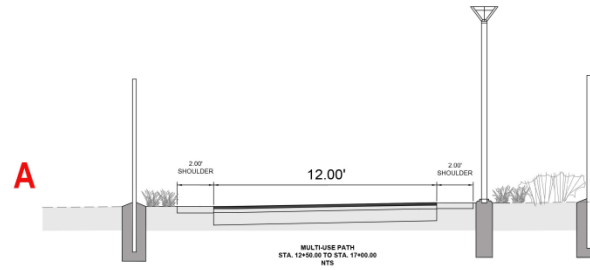
## Fenway Yawkey Multiuse Path



## Fenway-Yawkey Multiuse Path



## Fenway-Yawkey Multiuse Path Cross Sections





# Alternatives

- **Close coordination with the Landmark Center is needed to ensure smooth connections between path segments.**
- **Close coordination is also needed with MBTA, as they are constructing a flood control gate at the entrance to the D Line Tunnel.**
- **Close coordination with Boston Parks, Brookline Parks, DCR and others on Muddy River Restoration Phase 2.**



# Proposed Improvements

- Extension of the low-stress, family-friendly greenway network called the “Emerald Network”
- Greater opportunities for healthy, active transportation to and from Fenway Park, Kenmore Square, the Longwood Medical Area, and other important destinations
- Improved access to transit
- New places to use bike share!

# Project Schedule

**25% Design Submittal**

**2014**



**100% Design Submittal**

**Summer 2018**



**Design Public Hearing**

**November 29, 2017**

**Construction**

**2019-2020**

# Environmental Permitting



- Boston Parks Department
- Brookline Parks Department
- Boston and Brookline Conservation Commissions
- MassDOT Environmental Division
- Public can provide comments to MassDOT:  
<http://www.massdot.state.ma.us/highway/ProjectInfo/ProjectInfoProject.aspx?num=607888>



**How will traffic  
be affected?**





# **ALERT: Traffic Impacts**

- **Construction is off-road; Road traffic is expected to be maintained during construction.**
- **The connection between Miner Street and Fullerton Street may be temporarily closed while that section is being constructed.**

# Next Steps/Meeting

- **Coordinate with Brookline and Boston Parks Departments and Conservation Commissions**
- **Continue to coordinate with MBTA**
- **Coordinate closely with direct abutters**
- **Advance to 75% design, 100%, PS&E**

# Contact Information



- Submit written comments within 10 business days to Patricia A. Leavenworth, P.E., Chief Engineer, MassDOT, 10 Park Plaza, Boston, MA 02116, Attention: Roadway Project Management, Project File No. 607888.
- MassDOT:  
[massdot.state.ma.us/highway/ProjectInfo/ProjectInfoProject.aspx?num=607888](http://massdot.state.ma.us/highway/ProjectInfo/ProjectInfoProject.aspx?num=607888)
- Boston: [boston.gov/departments/transportation/fenway-yawkey-multi-use-path](http://boston.gov/departments/transportation/fenway-yawkey-multi-use-path)





# Thank You

## Q&A

Fenway-Yawkey Multiuse Path  
Boston and Brookline, MA | #607888

**DESIGN PUBLIC HEARING**  
Harvard Vanguard Kenmore  
133 Brookline Ave, Boston  
November 29 | 6:30 PM