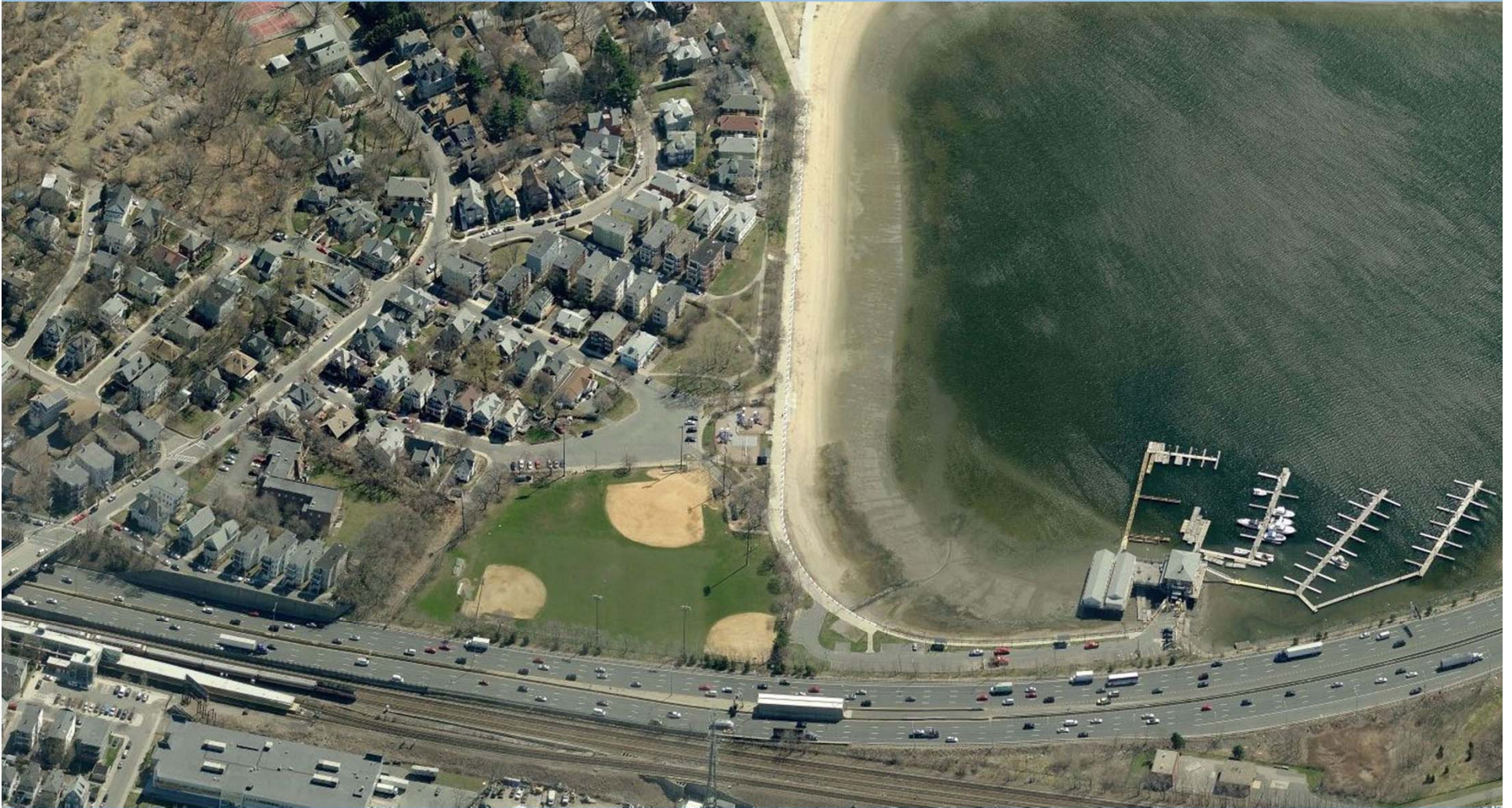


Improvements to
MCCONNELL PARK



PROJECT OVERVIEW

AGENDA

1

PROJECT TEAM INTRODUCTION

2

PROJECT OVERVIEW

3

PRESENTATION

4

LISTENING & DISCUSSION

5

CLOSING REMARKS & NEXT STEPS

PROJECT TEAM

Michele Folts

Project Manager, BPRD

michele.folts@boston.gov or 617-961-3025

Marchelle Jacques-Yarde

Outreach Coordinator, External Affairs

marchelle.jacques-yarde@boston.gov or 617-961-3006

Cheri Ruane, RLA

Weston & Sampson, Project Consultant Team Leader

Elise Bluell, Landscape Designer, W&S

ADDITIONAL RESOURCES

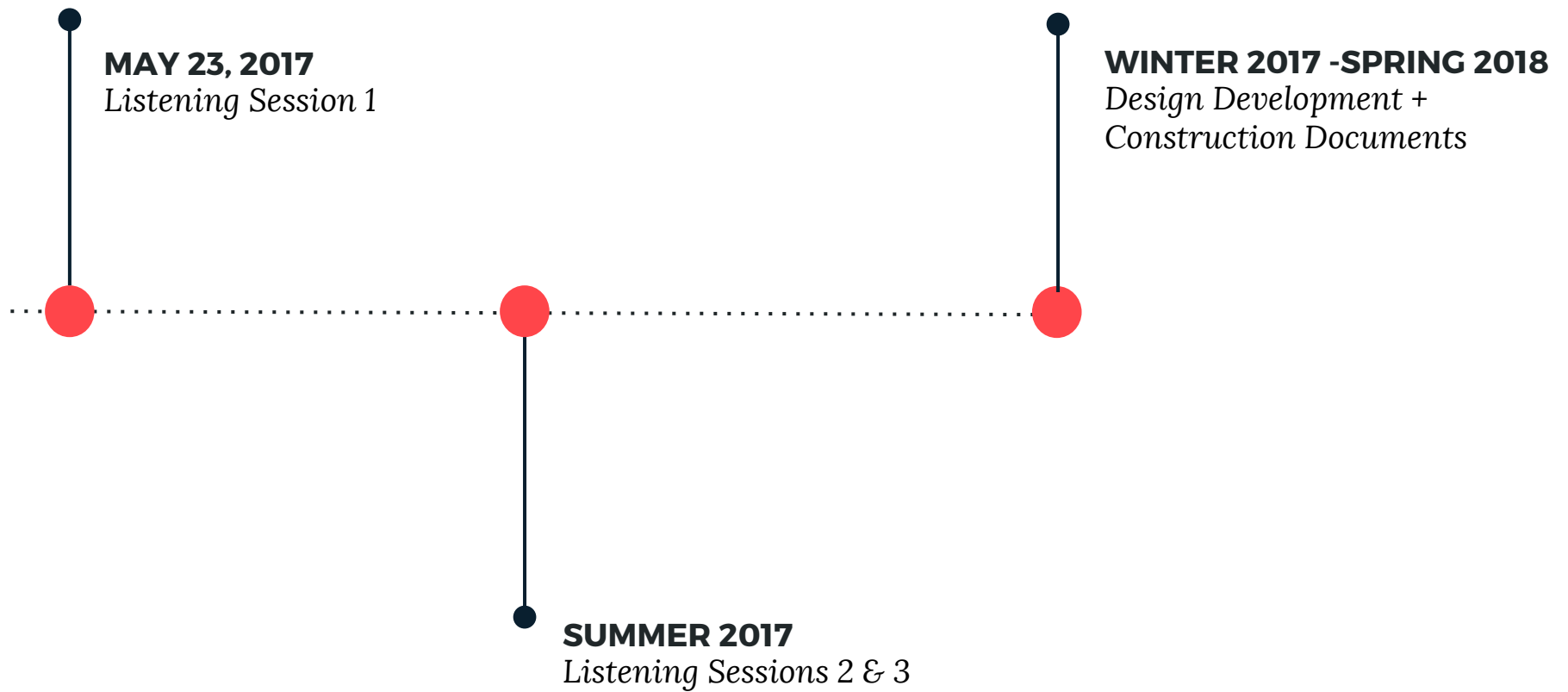
Dave Cotter

Office of Neighborhood Services for McConnell Playground

david.cotter@boston.gov or 617-635-4819



PROJECT SCHEDULE





CITY OF BOSTON PRIORITIES

- **Expanding walkable access to parks**
- **Addressing equity**
- **Climate resilience**
- **Health**
- **Housing and community building**



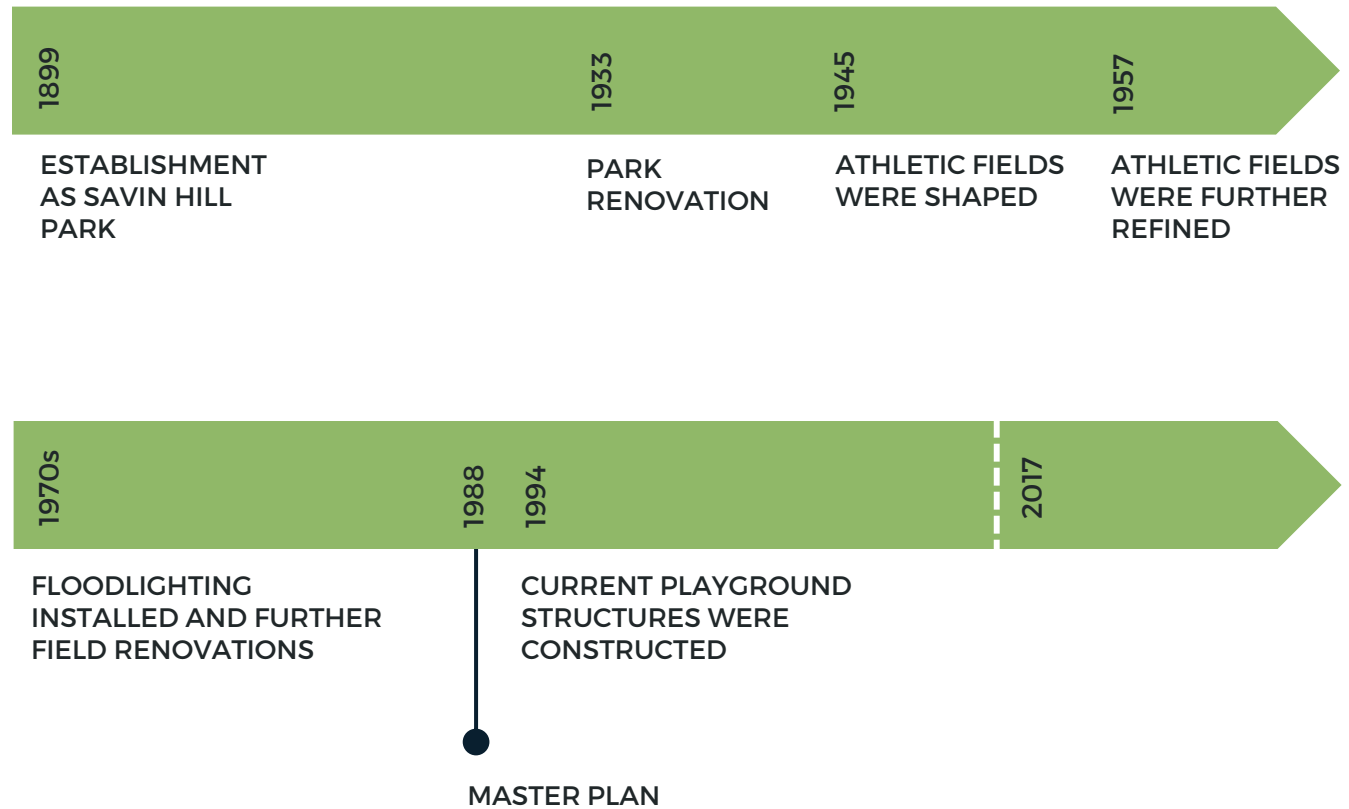
PARK & RECREATION GOALS

- **Preserve And Protect Existing Trees**
- **Expand Usable Park Area**
- **Improve Universal Access**
- **Enhance Park Visibility**
- **Improve Access to Parks**
- **Design Flexible, Multi-functional Park Spaces**

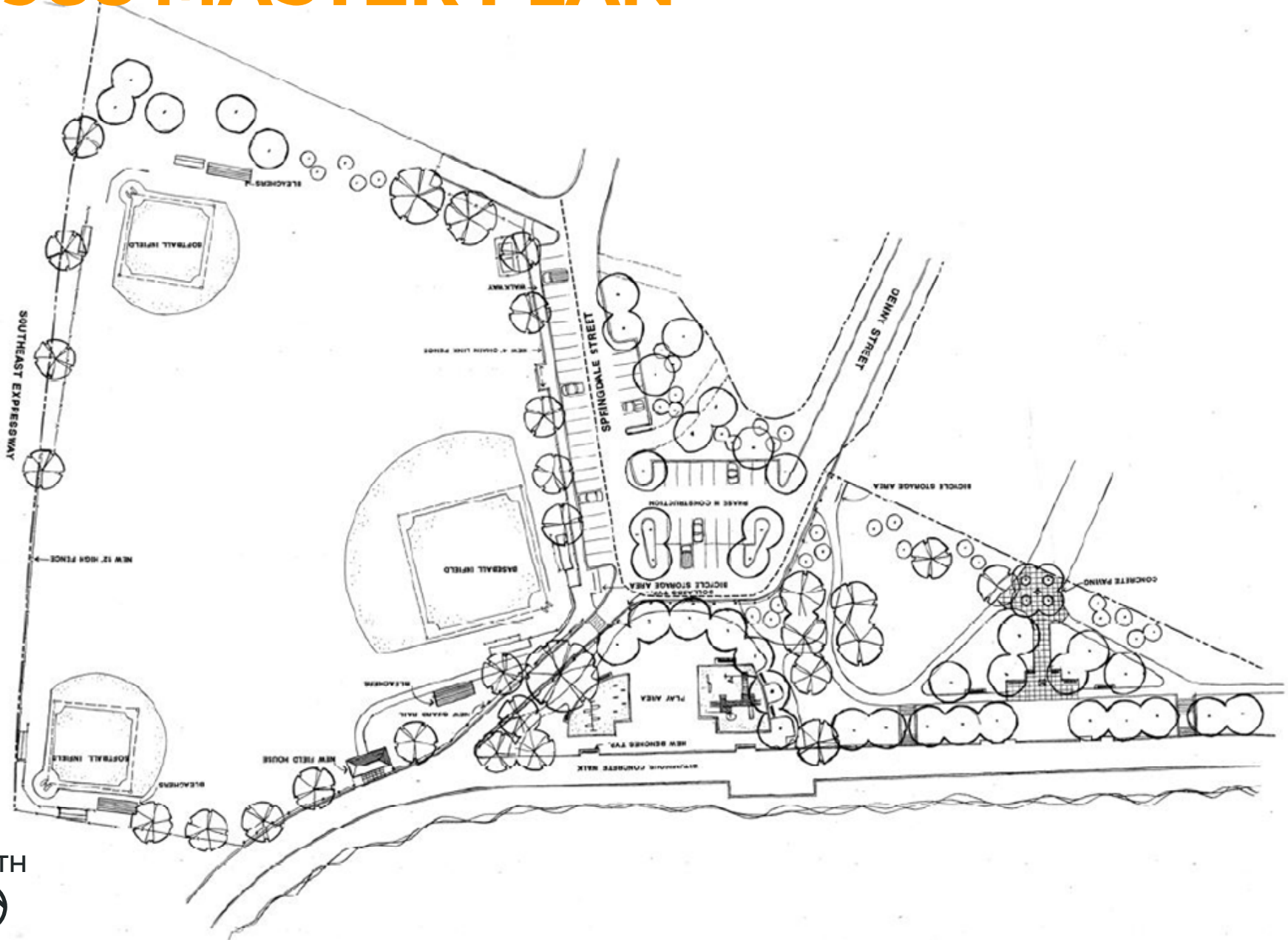


PARK TIMELINE

McConnell Park History



1988 MASTER PLAN



NORTH



SITE AERIAL



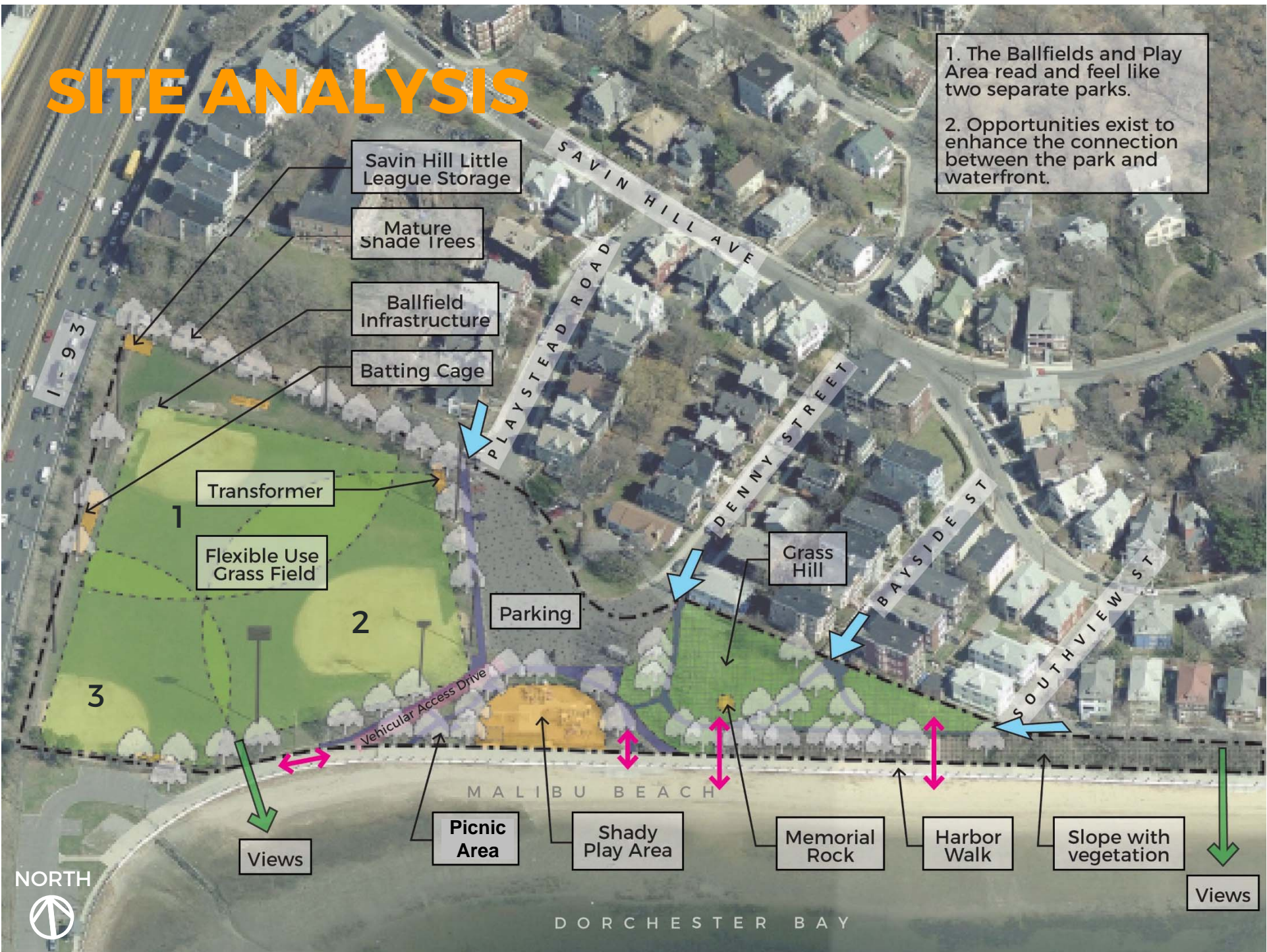
NORTH



DORCHESTER BAY

SITE ANALYSIS

- 1. The Ballfields and Play Area read and feel like two separate parks.
- 2. Opportunities exist to enhance the connection between the park and waterfront.



DORCHESTER BAY

SITE PLAN

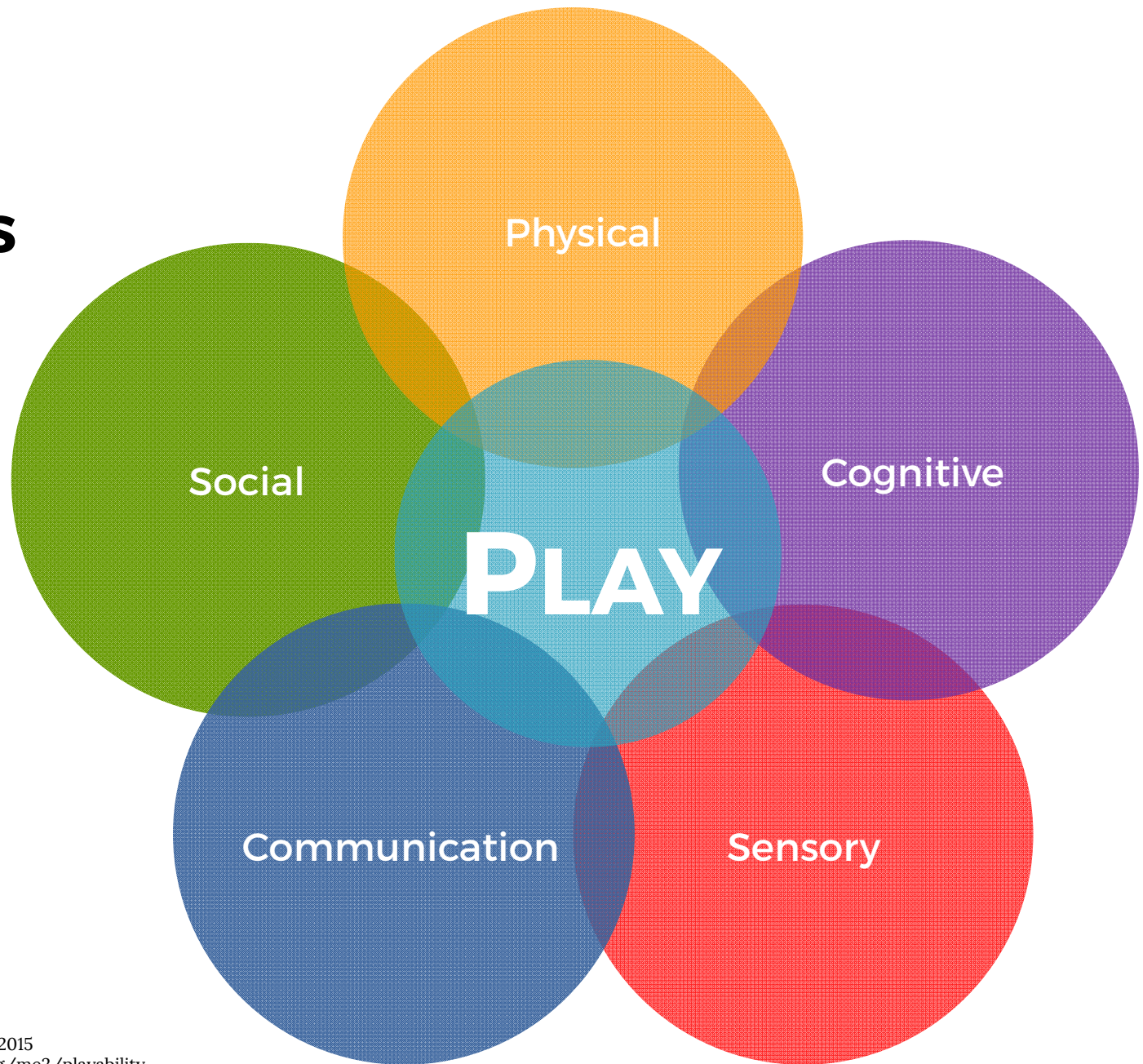


NORTH



1" = 30' 0" 0 15 30 60 FT

THE **5** ELEMENTS OF PLAY



SOCIAL/EMOTIONAL

COOPERATION, DRAMATIC +
IMAGINATIVE PLAY



SEATING + TABLE AREAS,
THEMATIC PLAY ELEMENTS
(SHIPS), PLAY HOUSES

PHYSICAL

GROSS MOTOR/ FINE MOTOR SKILLS,
FLEXIBILITY, ACCESSIBILITY, HEALTHY
RISK + VARIETY



DISH SWINGS, MOVEABLE
OBJECTS, SWINGS, MONKEY
BARS, BALANCE

SENSORY

TOUCH, VISUAL, AUDITORY, SMELL
VESTIBULAR, PROPRIOCEPTIVE +
INTEROCEPTIVE



PUSH/ PULL ELEMENTS
WATER ELEMENTS, VARIED
TEXTURES + COLORS, SPINNING,
MOVEABLE OBJECTS, ROCKING

COGNITIVE

CREATIVITY, SENSE OF
ACCOMPLISHMENT, PROBLEM-
SOLVING, CAUSE + EFFECT, RISK
ASSESSMENT



INTERACTIVE WATER ELEMENTS,
ROPE CLIMBER, LINKED PLAY
ELEMENTS

COMMUNICATION

DEVELOPMENT OF RECEPTIVE +
EXPRESSIVE LANGUAGE



TALK TUBES, SLIDES, THEMATIC
PLAY ELEMENTS, TRIKE TRACK,
SEE SAWS

Play Area

Post-and-Platform Play Elements



Play Area

Slides and Seating



Parking Park Entrance at Playground



Ballfields

Field 1



Ballfields

Savin Hill Little League



Ballfields

Batting Cage along I-93



Ballfields

Field 3



Waterfront View

Bleachers at Field 3



Waterfront View

Panorama view of Dorchester Bay



Harbor Walk

Dochester Yacht Club Access



Harbor Walk Shade Structure



Passive Park Space

Grass Hill



Memorial Rock

Tribute to Joseph W. McConnell



Passive Park Space

Grass Area with Pathways



Passive Park Space

Grass Area with Pathways



Waterfront Access

Stairs and Cut-through





LISTENING & DISCUSSION

Help us build great parks.
Let us know what matters to you.



THANK YOU!

Next Listening Session: Time, date, and location to be scheduled.

For further information regarding this project including a user survey, please visit the City of Boston Parks website at <https://www.boston.gov/departments/parks-and-recreation/design-and-construction-boston-parks>

For questions, maintenance requests or concerns regarding any of our parks contact 311



The logo for the City of Boston, consisting of a white letter "B" on a black square background with a red horizontal bar at the bottom.

May 23, 2017
Boston Parks and Recreation

