



Boston has a new default speed limit.

IF YOU DON'T SEE A SIGN, THE SPEED LIMIT IS 25 MPH.

**HELP SPREAD THE WORD.**

Talk with your family, neighbors, and friends about the speed limit change.

**SHOW YOUR SUPPORT.**

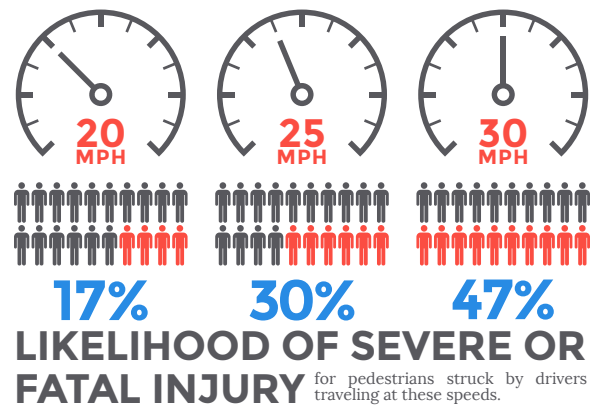
Visit [boston.gov/25mph](http://boston.gov/25mph) to learn how to show your support and get engaged.

**BE AWARE OF YOUR SPEED.**

Drive at or below the 25 mph speed limit. You can help save lives. If you crash, you're less likely to cause serious injury or death.

**WHY THE CHANGE?**

Reducing driving speeds from 30 mph to 25 mph will help make Boston safer for people of all ages and abilities walking, driving, and bicycling on our streets.



**WHICH STREETS ARE AFFECTED?**

The default speed limit applies to all streets without speed limit signs. Some streets will have signs with higher or lower speed limits.

**EFFECTIVE  
01.09.17**

[BOSTON.GOV/25MPH](http://BOSTON.GOV/25MPH) // [VISIONZEROBOSTON.ORG](http://VISIONZEROBOSTON.ORG)