



# Jamaica Pond Boathouse Study

Community Meeting #1 | April 15, 2026



Mayor Michelle Wu



Parks and Recreation

annum



City of Boston  
Public Facilities

# MEETING RECORDING

---



*The Boston Parks and Recreation Department will be recording the meeting and posting to our project webpage for those who are unable to attend the Zoom meeting live.*

*It is possible that participants may also be recording the meeting with their phones cameras or other devices. If you do not wish to be recorded during this meeting, please keep your microphone muted and camera off.*

*Please share with your neighbors and friends,  
[boston.gov/jamaica-pond-boathouse](https://boston.gov/jamaica-pond-boathouse)*



# VIRTUAL MEETING ETIQUETTE

---

We want to ensure this conversation is a pleasant experience for all and that all community members/stakeholders are comfortable sharing their comments, questions and feedback.

Please be respectful and mindful of each other's time when asking questions/ providing comments, so that all attendees are able to participate in the meeting.

Keep questions/ comments project-specific and not personal to yield solution-driven discussion.

Please wait until all attendees have had the opportunity to ask a question/ provide a comment before providing additional questions/ comments.

You can always set up a conversation with Kezia Ofiesh, [kezia.ofiesh@boston.gov](mailto:kezia.ofiesh@boston.gov), to further discuss the project or process.



# ZOOM TIPS

---

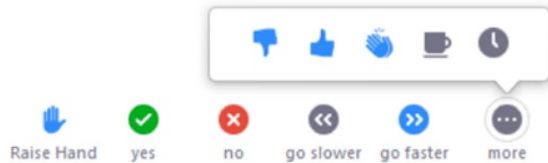
Here is how you can participate during the question and answer part of the presentation.

## DURING THE PRESENTATION:



### VIA WEB:

Turn video on / off.



To use these non-verbal options click on participants (bottom of screen); these options will pop up in side bar.

## DURING THE Q&A:



### JOINING VIA PHONE?

Use \*9 to raise hand to ask for audio / video permission to ask questions or provide comments.



### VIA WEB:

Chat to ask questions / comments or provide responses to poll questions



Raise hand to ask for audio / video permission to ask questions or provide comments.

# PRIORITIES

---



# PARKS & RECREATION GOALS

- Accessible and available to all
- Diverse, balanced, and efficient mix of uses
- Meaningful and inclusive community engagement
- Adaptive and resilient landscapes
- Promote connections



# PUBLIC FACILITIES DEPARTMENT GOALS

---



- Creating a welcoming, high quality, site specific, and inclusive environment that will last generations
- Meeting the program requirements and needs of the User Groups
- Achieving the desired schedule
- Building within the required budget
- Meeting all ADA and physical accessibility needs through universal design strategies
- Delivering a sustainable, resilient and healthy project
- Improving the public realm and embracing unique cultural expressions



# CITY OF BOSTON GOALS

---



A city that is:

- Delivering Exceptional Constituent Services
- Green and Growing
- Family Friendly
- Closing the Racial Wealth Gap
- Healthy and Safe



# PROJECT TEAM



## CITY OF BOSTON

### CITY OF BOSTON PUBLIC FACILITIES DEPARTMENT

**CARLETON JONES**, *Executive Director*

**ROHN MACNULTY**, *Deputy Director*

**EVAN BRINKMAN**, *Assistant Director*

**ALISTAIR LUCKS**, *Project Manager*

**WHITNEY HANSLEY**, *Project Manager, Studies*

**BRIDGETTE NEE**, *Communications Manager*

### BOSTON PARKS & RECREATION DEPARTMENT

**CATHY BAKER-ECLIPSE**, *Parks Commissioner*

**KEZIA OFIESH**, *Project Manager*

**MY'KEL MCMILLEN**, *Community Outreach Coordinator*

### PROJECT CONSULTANTS:

#### ARCHITECT: Annum Architects

JASON BOWERS, *Principal-in-Charge*

ASHLEY MERCHANT, *Project Manager*

MARK PANTANO, *Project Architect*

#### STRUCTURE: RSE Associates

#### MEP: R.W. Sullivan Engineering

#### CODE: Code Red

#### HISTORIC PRESERVATION: BCA

#### CIVIL ENGINEERS: VHB

#### LANDSCAPE ARCHITECTS: KMDG



# AGENDA

---

- ▶ Schedule + Scope
- ▶ Existing Conditions
- ▶ What We've Heard So Far
- ▶ Visioning Discussion



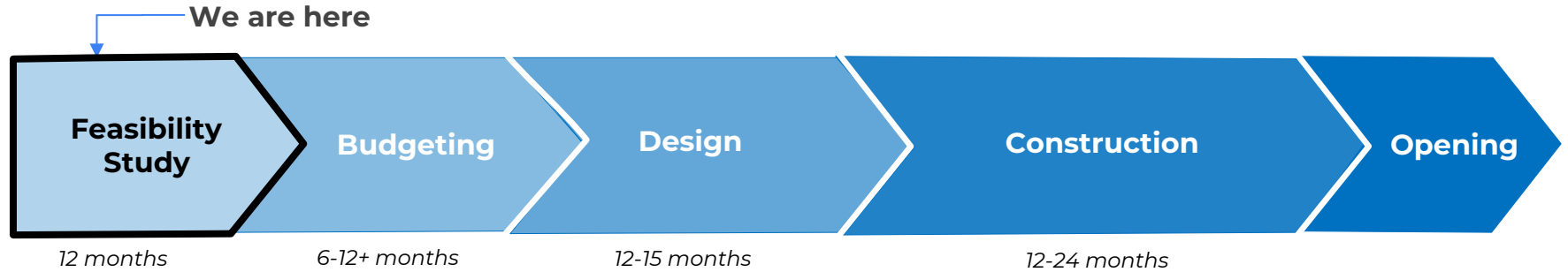


---

# SCHEDULE + SCOPE

# PROJECT SCHEDULE

- ▶ 3.5+ year schedule from study through end of construction
- ▶ Renovations complete in 2030 at earliest
- ▶ Many factors could extend this schedule including: State & local permitting, landmark & historic preservation review, budget, seasonal construction
- ▶ Project budget will be determined at the conclusion of this study



Community input

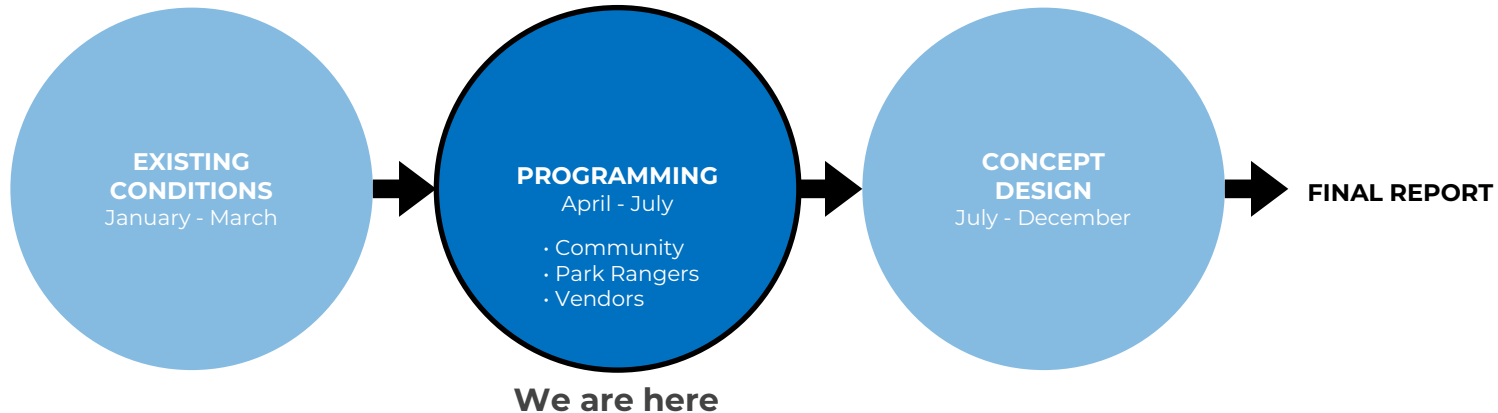


Community input

# FEASIBILITY STUDY PROCESS & GOALS

---

Conduct a **Feasibility Study** to determine the extent of required **repairs**, small scale **renovations** and legally required **code upgrades** related to accessibility and life safety. Through surveys, interviews and space analysis, the study will also explore a range of options for introducing **new and/or enhanced programming** at the Boathouse and Bandstand.



# STUDY | COMMUNITY OUTREACH

---

Your input is essential to a successful project. We want to hear all of your ideas, big and small. We are especially looking forward to hearing your ideas for small improvements that will have a big impact!

We have designed several inputs for community members to offer their feedback throughout the study and all comments from community members will be documented in the study final report.

- ▶ Project Webpage **[boston.gov/jamaica-pond-boathouse](https://boston.gov/jamaica-pond-boathouse)**
  - Online Surveys
  - Sign up for Email List
- ▶ 3 Community Meetings:
  - April (virtual)
  - June (in person), date TBD
  - September

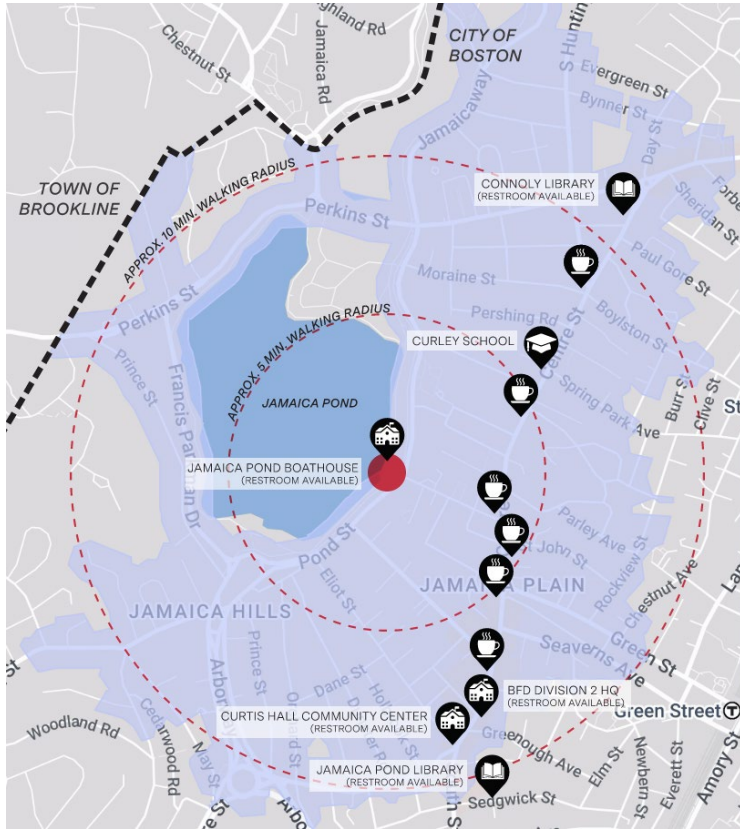




---

# EXISTING CONDITIONS

# LOCATION



507 Jamaica Way

East side of Jamaica Pond

5 min walk to Centre Street shops and cafes



# HISTORY

---

## *Jamaica Pond Boathouse & Bandstand*



### ▶ **EMERALD NECKLACE**

- ▶ Emerald Necklace designed by Frederick Law Olmsted in the late 19<sup>th</sup> century
- ▶ The plan designated this location for a boathouse

### ▶ **BUILDINGS CONSTRUCTED IN 1912**

- ▶ Designed by William Downes Austin in Tudor-Bungalow Style
- ▶ Partial renovations in the 1970's and 1990's

### ▶ **HISTORIC DESIGNATIONS**

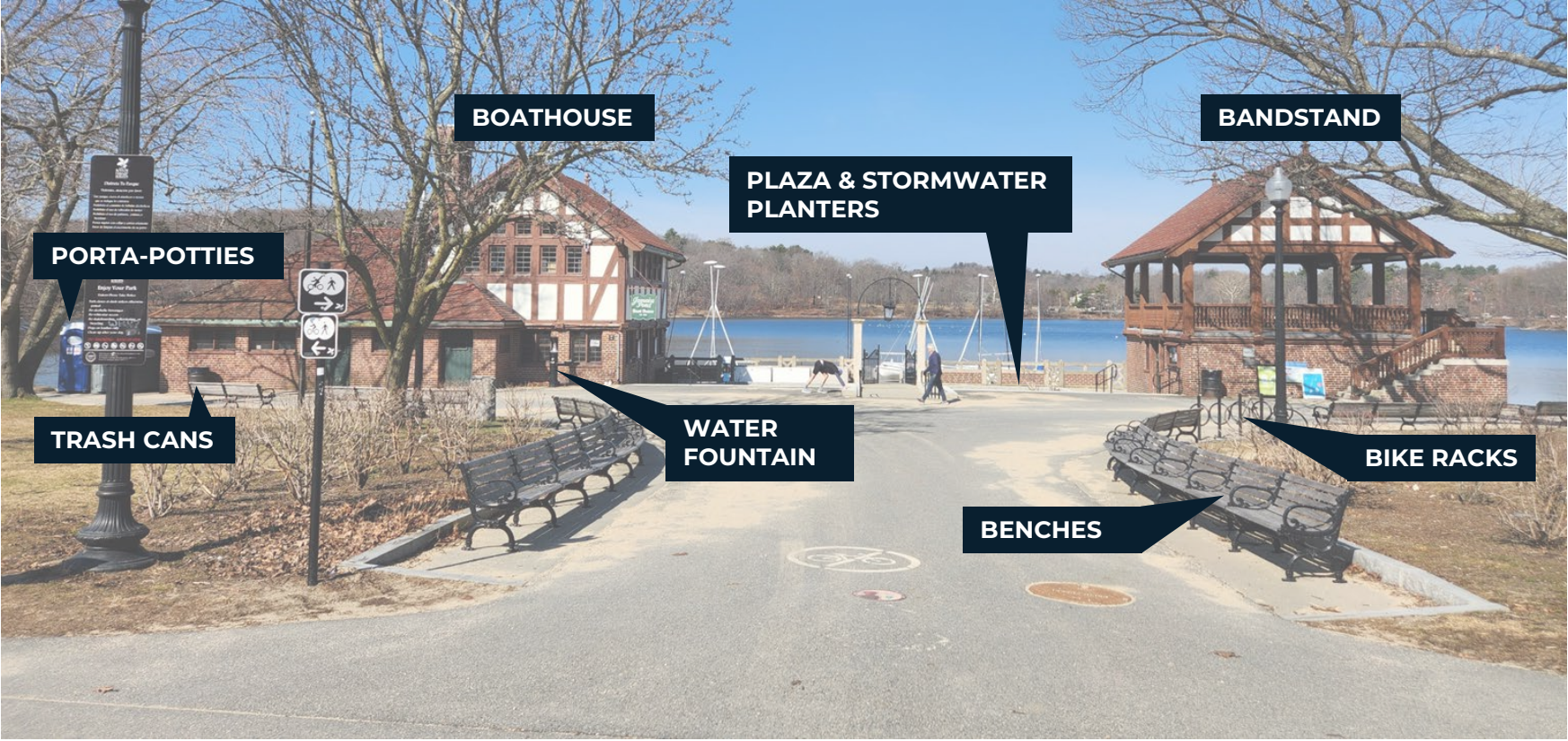
- ▶ The Emerald Necklace is on the National Register of Historic Places
- ▶ Jamaica Pond is a City of Boston Landmark
- ▶ Both buildings are considered “contributing structures” to these historic districts and repairs or upgrades must meet federal, state and local preservation requirements

# EXISTING CONDITIONS - SITE



- ▶ Jamaica Pond is classified as a Great Pond (surface area over 10 acres).
- ▶ Stormwater runoff and pollutants are major issues for the pond.

# EXISTING CONDITIONS - SITE

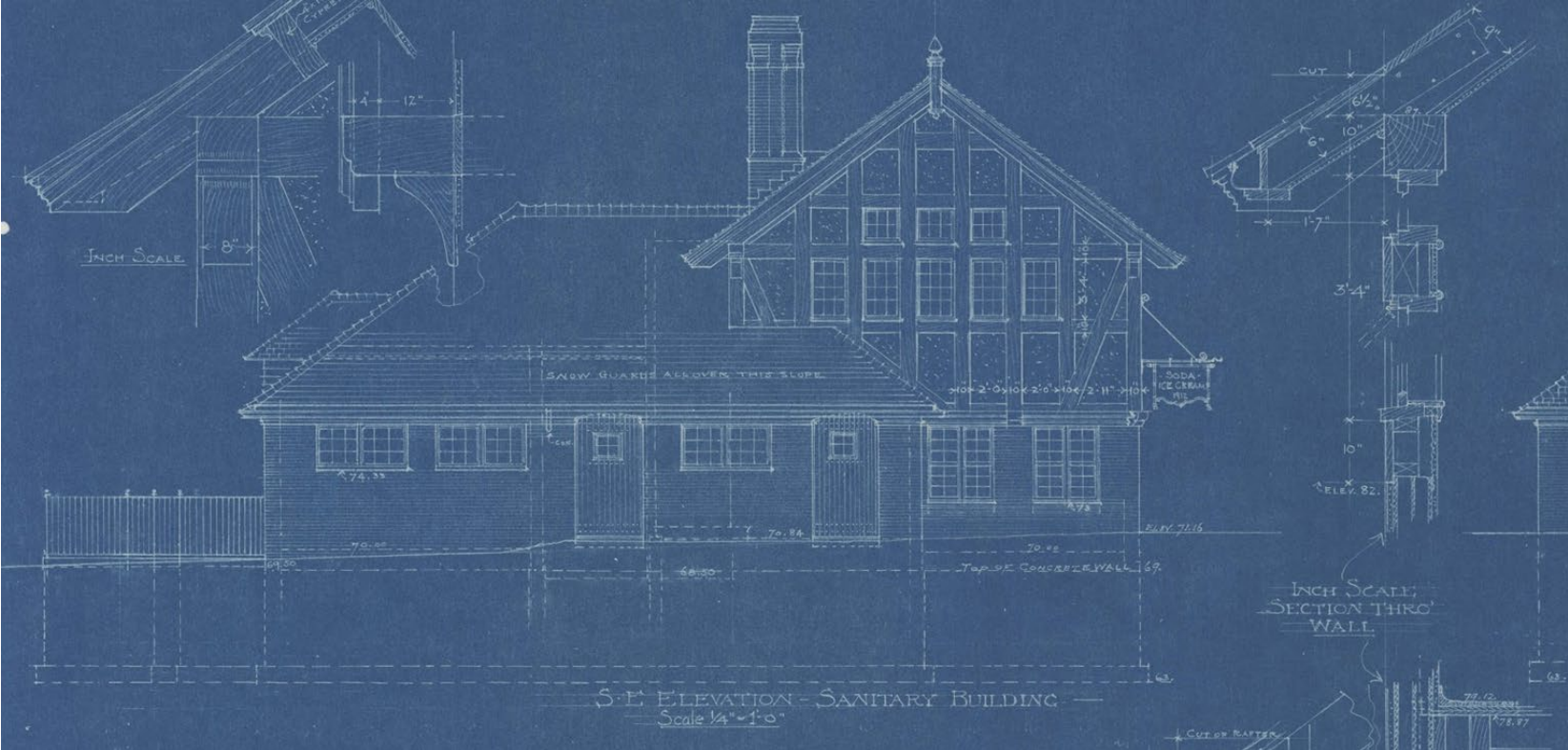


# EXISTING CONDITIONS - SITE



- ▶ Immediate site was redone in the 2019 Jamaica Pond Park Pathways and Entrances Project which added accessible paths.
- ▶ Planters are historic to the project and provide stormwater filtration.

# EXISTING CONDITIONS - BUILDINGS



Original 1912 Elevation Drawing



# EXISTING CONDITIONS - BUILDINGS



*Boathouse: 1.5 stories*



*Bandstand: 1 story + open air pavilion*

# EXISTING CONDITIONS – BUILDING ASSESSMENT



- ▶ **EXTERIOR WALLS AND TRIM:** Paint is badly peeling, masonry has areas of damage, wood trim and railings have rot.
- ▶ **ROOF:** Terracotta roof is in good shape, but needs spot repair. Copper gutters need repair and replacement.
- ▶ **WINDOWS:** Windows need significant work or replacement.
- ▶ **STRUCTURE:** There is cracking in the brick at the southwest corner of the building due to a structural issue.

# EXISTING CONDITIONS - BUILDING ASSESSMENT



- ▶ **FINISHES:** Many interior finishes are in need of maintenance, repair or replacement.
- ▶ **RESTROOMS:** Restrooms are in need of updated finishes, fixtures, and accessibility upgrades.
- ▶ **ACCESSIBILITY:** Both upper levels are not accessible.
- ▶ **SYSTEMS:** HVAC, Electrical, and Fire Alarm systems are at end of service life.

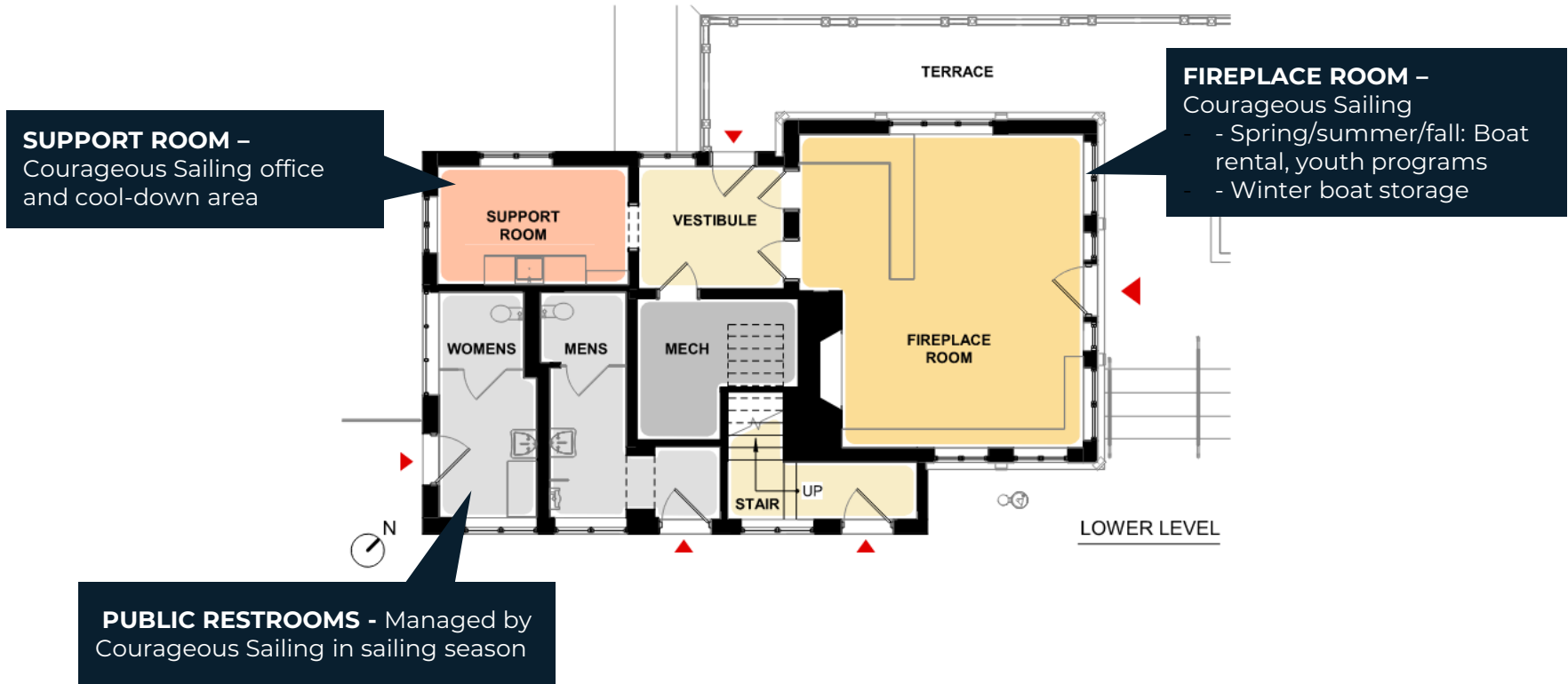
# EXISTING CONDITIONS - CURRENT USES

---



- Boat Rental
- Public Restrooms
- Park Ranger Office
- Nature Center
- Public Event Permits

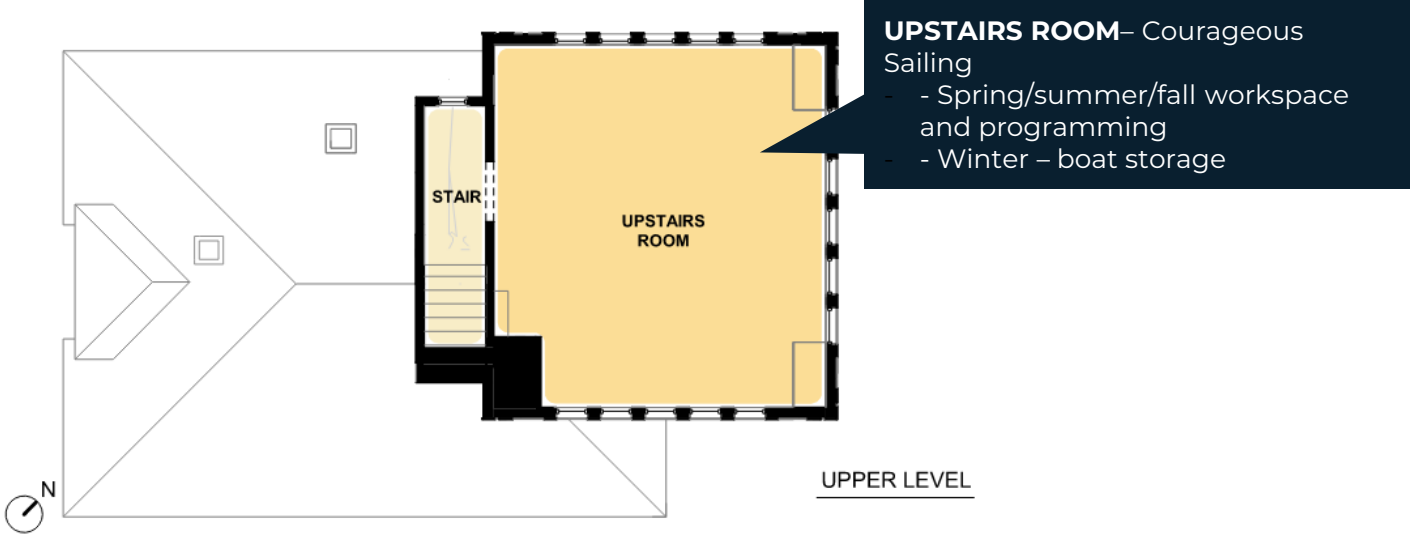
# EXISTING CONDITIONS – BOATHOUSE PROGRAMMING



# EXISTING CONDITIONS – BOATHOUSE PROGRAMMING



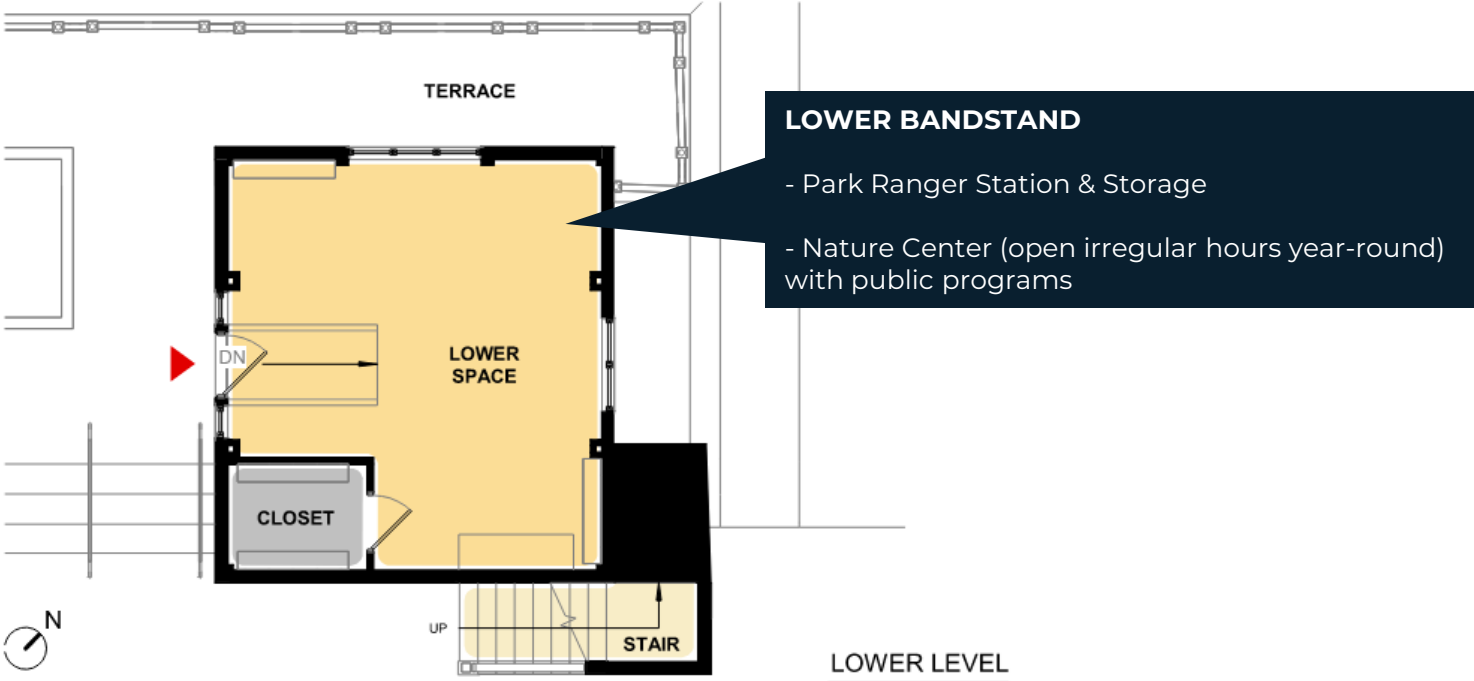
# EXISTING CONDITIONS – BOATHOUSE PROGRAMMING



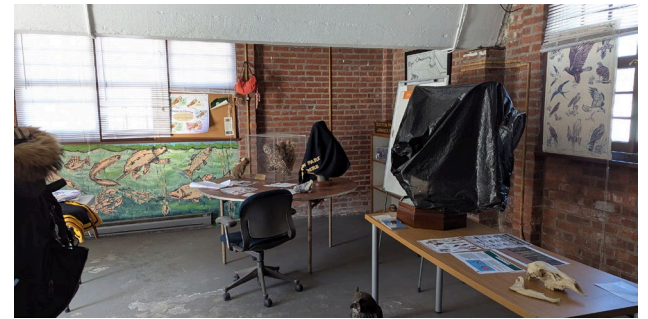
# EXISTING CONDITIONS – BOATHOUSE PROGRAMMING



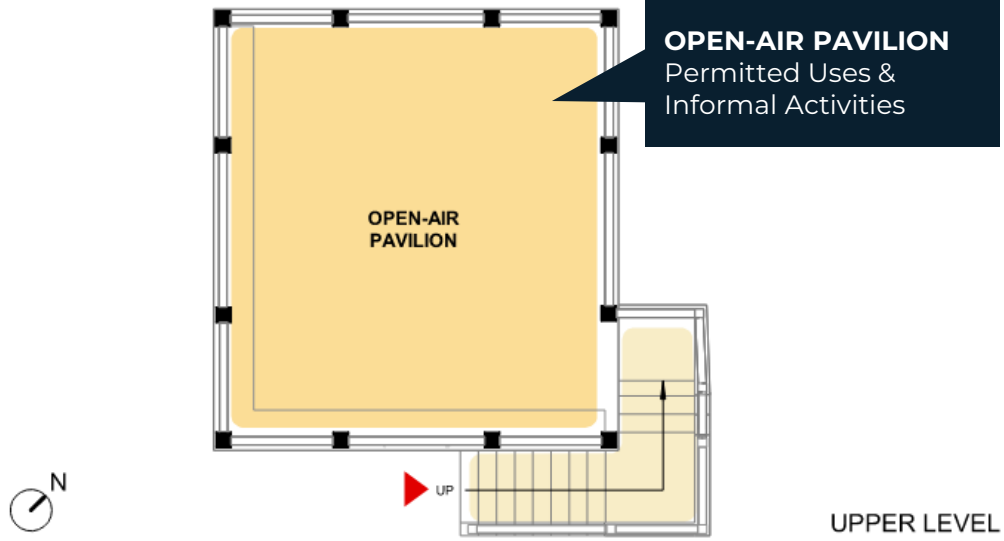
# EXISTING CONDITIONS – BANDSTAND PROGRAMMING



# EXISTING CONDITIONS - BANDSTAND PROGRAMMING



# EXISTING CONDITIONS - BANDSTAND PROGRAMMING



# EXISTING CONDITIONS - BANDSTAND PROGRAMMING

---



# CURRENT USES - 2025 PERMITS

---



*Image credit: JP Jitterbugs*

- Weddings, Elopements & Engagement Parties
- Birthday Parties, Memorials & Baby showers
- Music & Dance
- Yoga
- Runs/Walks
- Parades
- Corporate & religious outings
- Community Events



---

# WHAT WE'VE HEARD SO FAR

# WHAT WE'VE HEARD – PEOPLE LIKE...

---

*According to Online Survey Responses*

“I love that they are "**quaint**", **fit in** with the space & setting, don't overwhelm.”

“The **historic structures** that have stood the test of time. Four generations of my family and many others in the JP neighborhood have celebrated birthdays, graduations, friendship and multigenerational, community concerts and sing alongs and dancing. It is an accessible space where people can push their wheelchair bound elders to meet neighbors and **enjoy the natural beauty of our precious Pond!**”

“Both the **formal programming** (Courageous Sailing, race events, concerts, Lantern Parade) and the **informal events** (sunday music jam, watching boats and sunsets). They are architecturally beautiful and structurally welcoming.”



# WHAT WE'VE HEARD – PEOPLE LIKE...

---

*According to Online Survey Responses*

## CHARACTER & DAILY USE

**Historic character of buildings**

**Bandstand shelter & view**

**Local landmark & meeting spot**

**Restrooms**

## ACTIVITIES & EVENTS

**Boats**

**Local events**

**Music & dancing events**

**Lantern Parade**



# WHAT WE'VE HEARD – PEOPLE WOULD LIKE TO SEE...

---

According to Online Survey Responses

“**Improving accessibility** should be a top priority.”

“Keep the traditional look but **upgrade the infrastructure**. Definitely improve the bathrooms and access to public drinking fountains. The classroom space underneath the bench stand could be more available for public use. Keep the courageous sailing operation going. Clean up the upper band stand area for dancing and recreation. Maybe install more sidewalk level seating in the area.”

“I’ve long wanted there to be a food anchor here to connect folks walking from center street to the pond and then the Olmsted park area - a cafe or even food truck area would be fantastic tools to provide folks with a **destination** as they meet at the park, walk around, and as an encouragement to stay in JP longer...”



# WHAT WE'VE HEARD – PEOPLE WOULD LIKE TO SEE...

According to Online Survey Responses

## FOOD & BEVERAGE

- Cafe
- Cocoa/cider in winter
- Beer Pop-ups
- Food Trucks
- Ice Cream
- Snacks
- Picnic Tables
- Tables & Chairs

## ACCESS

- Expanded Nature Center Hours
- Improved Accessibility
- Year-round Restrooms
- Gender Neutral Restrooms

## RENTALS

- Fishing Rod Rental & Bait Shop
- Skate Rental
- Sled & Cross-country Ski Rental

## PROGRAMS

- Art/Craft Meetings
- Art Classes
- Community Event Board
- Family Programs

## EVENT SUPPORT

- Free Wifi
- Sound System
- Electricity in Bandstand
- Outdoor Heaters
- Bleacher Seating Opposite Bandstand





---

# VISIONING DISCUSSION

# DISCUSSION QUESTIONS

---

1. What values should guide decision-making on future uses?
2. What are the most important things for a renovation of these buildings to achieve?
3. How can a renovation improve the functionality of the buildings?
4. How can these spaces better serve the surrounding neighborhood?
5. What new uses would you like to see in this location?



## NEXT STEPS

---

- ▶ Project Webpage [boston.gov/jamaica-pond-boathouse](https://boston.gov/jamaica-pond-boathouse)
  - Sign up for Email List
  - Email of Call Kezia Ofiesh  
[kezia.ofiesh@boston.gov](mailto:kezia.ofiesh@boston.gov) 617-304-3393
  - Online Surveys: [bit.ly/boathousesurvey1](https://bit.ly/boathousesurvey1)



- ▶ Next Meeting June 2026, date/time/location TBD