

An aerial view of a city street intersection, likely in Bennington, Vermont. The image shows a multi-lane road crossing a bridge over a river. The surrounding area is densely packed with residential and commercial buildings, including several multi-story brick structures. There are green spaces, trees, and a baseball field visible in the background. The overall scene is captured from a high angle, providing a clear view of the urban layout and infrastructure.

BENNINGTON/SARATOGA SAFETY PROJECT VIRTUAL KICKOFF

JUNE 3, 2026



WELCOME

- ▶ This meeting will be recorded.
- ▶ If you speak Spanish and you prefer to listen to the meeting in Spanish, press the Interpretation button to join the Interpretation channel

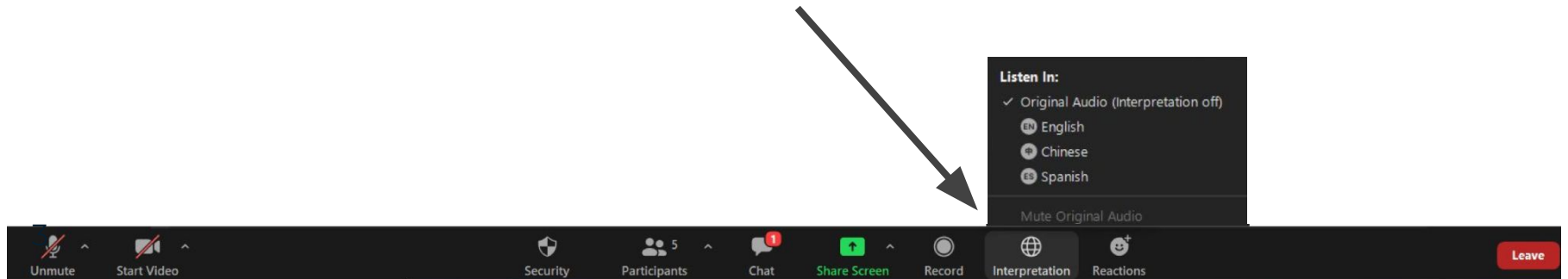


WELCOME

INTERPRETATION

Spanish: Para la interpretación en español:

1. Vaya a la parte baja de la pantalla, en la barra horizontal, y presione la tecla “Interpretation”.
2. Luego seleccione el idioma que desea escuchar.
3. Después de seleccionar, usted entrará a la reunión en el idioma “Español”.



WELCOME

- ▶ Your microphones are turned off to start. You will need Ask to Unmute to speak. Joining via phone? Press *6 to unmute.

- ▶ You can use non-verbal feedback options. Use the “Q&A” button to ask us questions, or share your thoughts using the Chat. If you called into the meeting, use *9 to raise your hand.

WELCOME & INTRODUCTIONS

CITY OF BOSTON

- Jake Berman
- John Monacelli, EIT
- Leina Xu, PE
- Maria Castillo
- Isaac Prizant
- Daniel Milbrandt
- Nick Osborne
- Carlos Garcia

PROJECT PURPOSE

SAFE STREETS FOR ALL

The City won a Federal grant for safety improvements for all users of Bennington/Saratoga.

The grant's purpose is to **reduce crashes and serious injuries.**



TONIGHT'S PURPOSE

1. Introduce the project and share what we're learning
2. Hear about your experiences moving through the intersection at Bennington and Saratoga, however you travel
3. Inform how we should use goals and metrics to weigh future design alternatives in the coming months



Orient Heights in the 1950s

Credit: Fairchild Aerial Surveys, inc.

WELCOME & INTRODUCTIONS

CONSULTANT TEAM

- Jason Sobel, PE, PTOE, (He/Him)
Director of Transportation Engineering, Nitsch Engineering
- Bryan Zimolka, PE, ENV SP (He/Him)
Senior Project Manager, Nitsch Engineering
- Jenn Goldson, AICP, (She/Her)
Lead Facilitator, JM Goldson LLC

WE WANT TO HEAR FROM YOU TONIGHT

HERE ARE A FEW TOOLS TO MAKE PARTICIPATION EASY:

Live Polls

Quick polls to gather input and understand community priorities.

Q&A

Submit questions anytime. We will respond.

Chat

Share reactions and ideas as we go.

Raise Your Hand

Make comments or ask a question at the end of the presentation.

INTERACTIVE POLL #1

WHO IS HERE TONIGHT?

*What's your relationship with the
Bennington/Saratoga intersection?*

A blue-tinted photograph of a 'WELCOME TO ORIENT HEIGHTS EAST BOSTON' sign in front of a row of houses. The sign is dark blue with white text. The text on the sign reads: 'WELCOME TO ORIENT HEIGHTS EAST BOSTON CITY OF BOSTON MAYOR THOMAS W. MENINO'. The sign is partially obscured by a bush in the foreground. In the background, there are several multi-story houses with white siding and windows. A street lamp is visible on the left side of the image.

WELCOME TO
ORIENT HEIGHTS
EAST BOSTON
CITY OF BOSTON
MAYOR THOMAS W. MENINO

INTERACTIVE POLL #2

HOW DO YOU TRAVEL?

*When you're going through Bennington/Saratoga,
how are you getting around?*

A blue-tinted photograph of a 'WELCOME TO ORIENT HEIGHTS EAST BOSTON' sign in front of a row of houses. The sign is dark blue with white text. The text on the sign reads: 'WELCOME TO ORIENT HEIGHTS EAST BOSTON CITY OF BOSTON MAYOR THOMAS W. MENINO'. The sign is partially obscured by a bush in the foreground. In the background, there are several multi-story houses with white siding and windows. A street lamp is visible on the left side of the image.

WELCOME TO
ORIENT HEIGHTS
EAST BOSTON
CITY OF BOSTON
MAYOR THOMAS W. MENINO

INTERACTIVE POLL #3

HOW OFTEN DO YOU TRAVEL
THROUGH BENNINGTON &
SARATOGA?

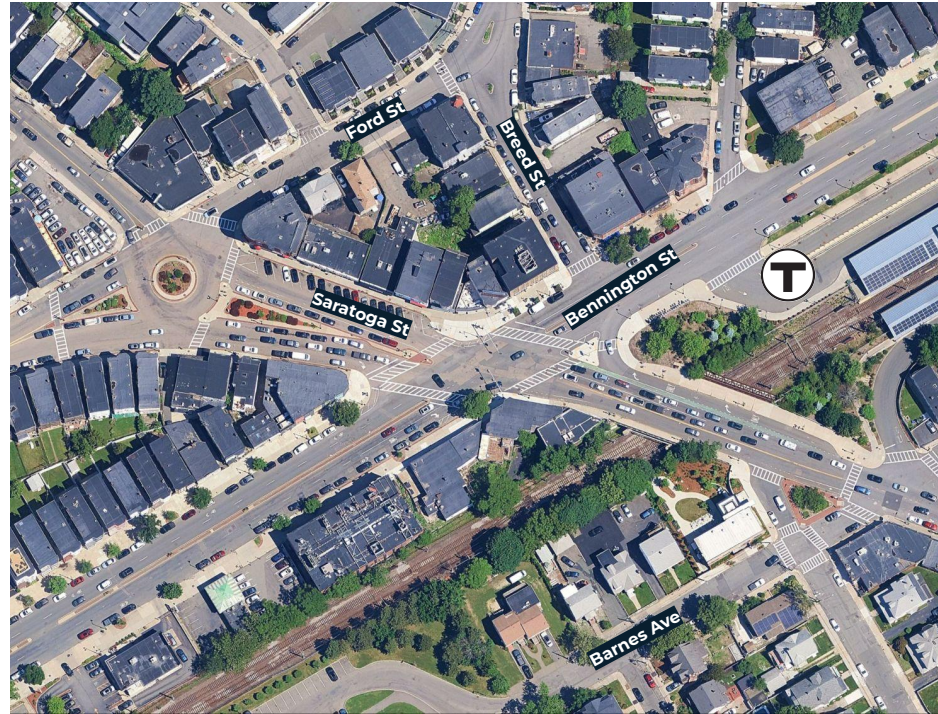
A blue-tinted photograph of a 'Welcome to Orient Heights East Boston' sign in front of a row of houses. The sign is dark blue with white text. The text on the sign reads: 'WELCOME TO ORIENT HEIGHTS EAST BOSTON CITY OF BOSTON MAYOR THOMAS MENINO'. The background shows a row of multi-story houses with white siding and windows, partially obscured by a blue overlay.

WELCOME TO
ORIENT HEIGHTS
EAST BOSTON
CITY OF BOSTON
MAYOR THOMAS MENINO

PROJECT OVERVIEW

WHY BENNINGTON/SARATOGA?

- Key MBTA Blue Line and bus hub
- Major access point to Winthrop
- High crash rate and safety issues for people outside of cars
- Many people move through here every day on buses, bikes, on foot, and in cars
- Plans for more homes and businesses coming to the area

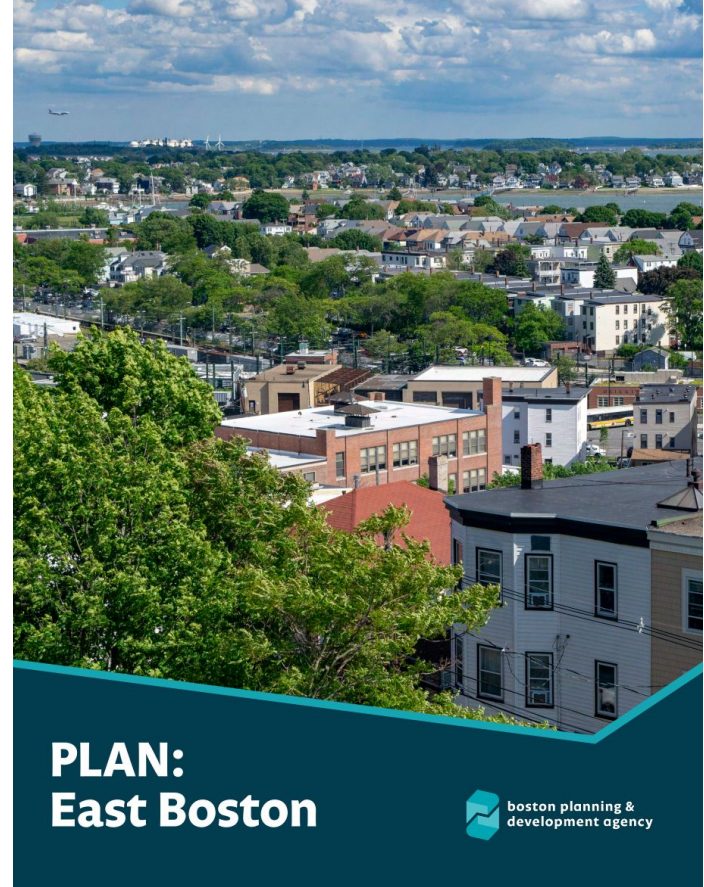


PRIOR PLANNING

PLAN: EAST BOSTON

- Adopted January 2024
- Included a range of options for future improvements throughout the neighborhood

Source: <https://www.bostonplans.org/planning-zoning/planning-initiatives/plan-east-boston>



EXISTING CONDITIONS

WHAT HAVE WE LEARNED SO FAR?

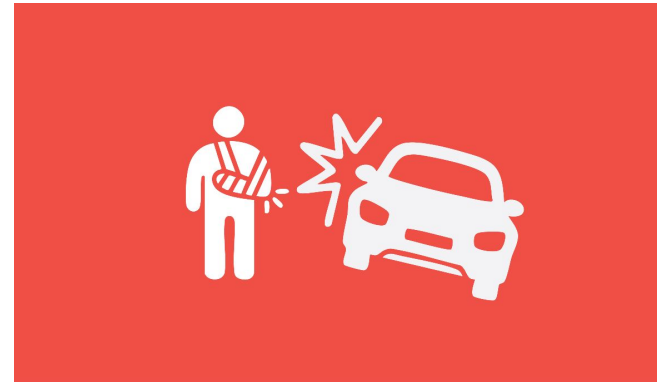


CRASH HISTORY - SUMMARY

35 crashes
between 2023
and 2025.



30 crashes only involved vehicles



5 crashes involved pedestrians

**Total does not include unreported crashes or near misses*

CRASH HISTORY - BREAKDOWN



Out of the 30 vehicular crashes:

- 13% (4 of 30) of crashes resulted in driver/passenger injuries
- Two crashes involved EMT transport



Out of the 5 pedestrian crashes:

- 80% (4 of 5) of crashes resulted in pedestrian injuries
- One crash involved EMT
- All occurred at night

INTERACTIVE POLL #4

DOES THE CRASH HISTORY MATCH YOUR PERCEPTION?

A blue-tinted photograph of a 'Welcome to Orient Heights East Boston' sign. The sign is dark blue with white text. It is positioned in front of a row of multi-story houses. The sign reads: 'WELCOME TO ORIENT HEIGHTS EAST BOSTON CITY OF BOSTON MAYOR THOMAS MENINO'. The sign is partially obscured by some bushes in the foreground.

WELCOME TO
ORIENT HEIGHTS
EAST BOSTON
CITY OF BOSTON
MAYOR THOMAS MENINO

EXISTING CONDITIONS

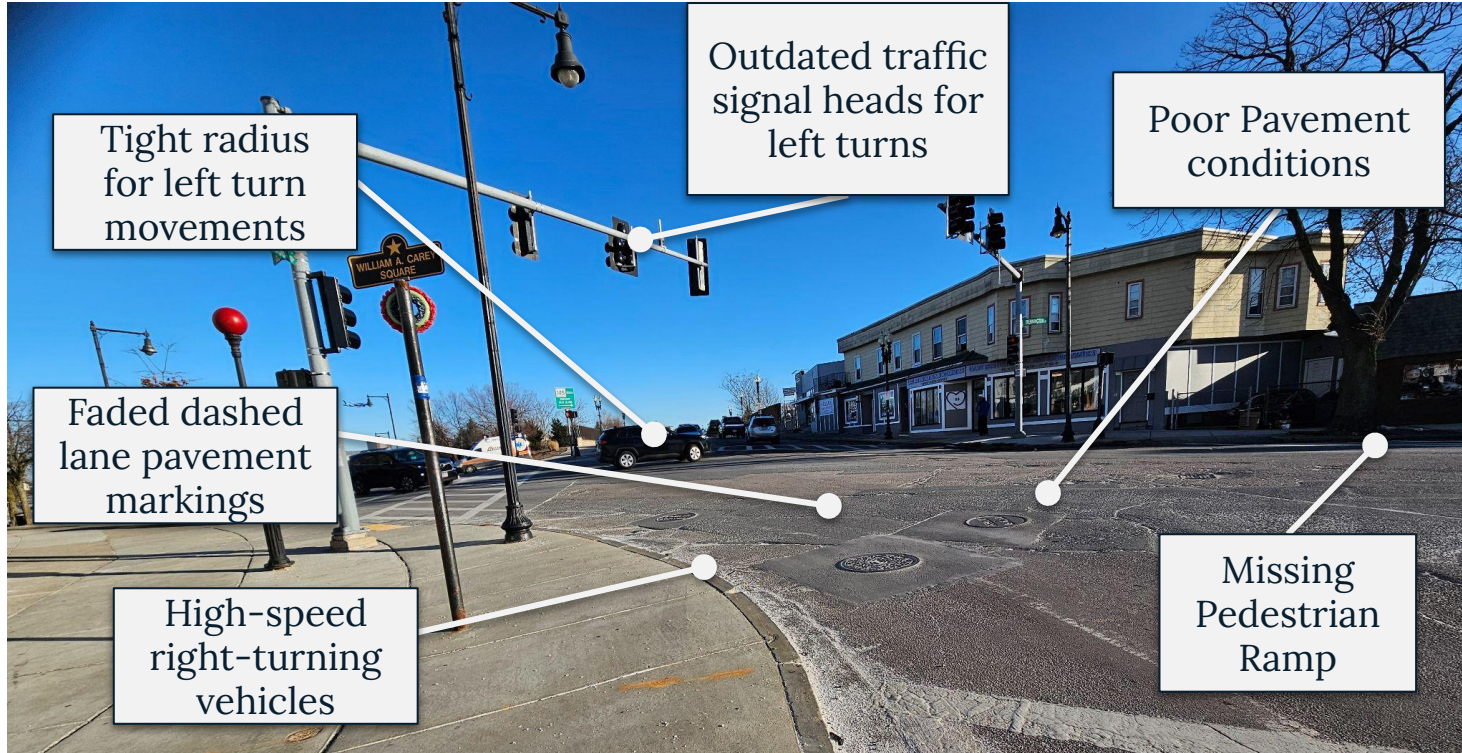
SKEWED DESIGN

The current design has wide approaches at skewed angles, which result in difficult turning paths for vehicles.



EXISTING CONDITIONS

SAFETY CONCERNS



EXISTING CONDITIONS

DRIVER SAFETY

Drivers often **speed, rush, or act aggressively** here.

Because of peak-hour traffic and conflict points, drivers **frequently run red lights or take risky turns** to avoid additional delays.

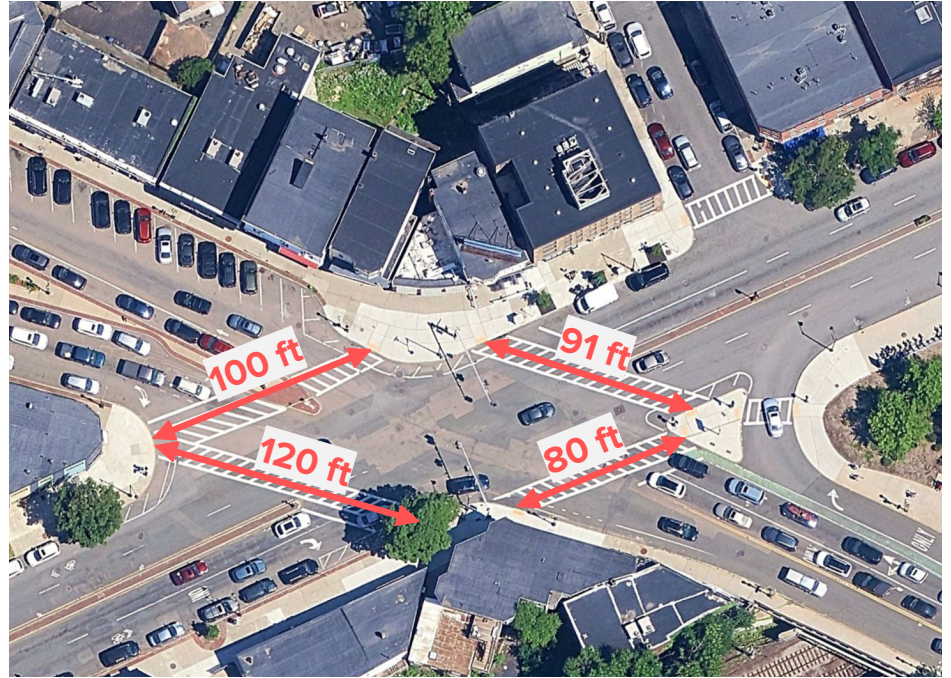


EXISTING CONDITIONS

PEDESTRIAN SAFETY

The diagonal intersection design means **crosswalks are long**, and there are no crossing islands in the middle.

This means walking here can feel **exposed and unsafe**.



EXISTING CONDITIONS

INCONSISTENT BICYCLE FACILITIES

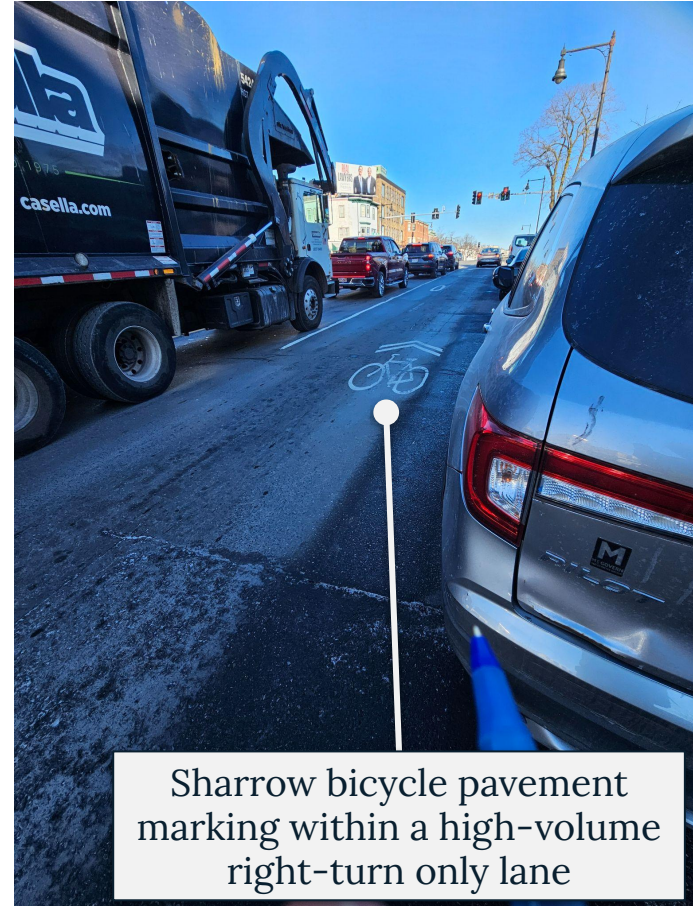


EXISTING CONDITIONS

LACK OF BIKING SAFETY

Biking through the intersection feels **unsafe and uncomfortable**, and **bicyclists tend to use the crosswalks** to travel through the intersection.

The existing bicycle facilities are limited with **discontinuous on-street bike lanes**.



Sharrow bicycle pavement marking within a high-volume right-turn only lane

WHAT THE DATA DOESN'T SHOW US

- Close calls that don't get reported
- Routes that feel confusing or unclear
- Places where people feel unsafe
- Day to day challenges getting around



INTERACTIVE POLL #5

DO THESE FINDINGS REFLECT YOUR EXPERIENCE?

A blue-tinted photograph of a 'Welcome to Orient Heights East Boston' sign. The sign is dark blue with white text. It is positioned in front of a multi-story building with many windows. The sign reads: 'WELCOME TO ORIENT HEIGHTS EAST BOSTON CITY OF BOSTON MAYOR THOMAS W. MENINO'. There are some bushes in the foreground.

WELCOME TO
ORIENT HEIGHTS
EAST BOSTON
CITY OF BOSTON
MAYOR THOMAS W. MENINO

INTERACTIVE POLL #6

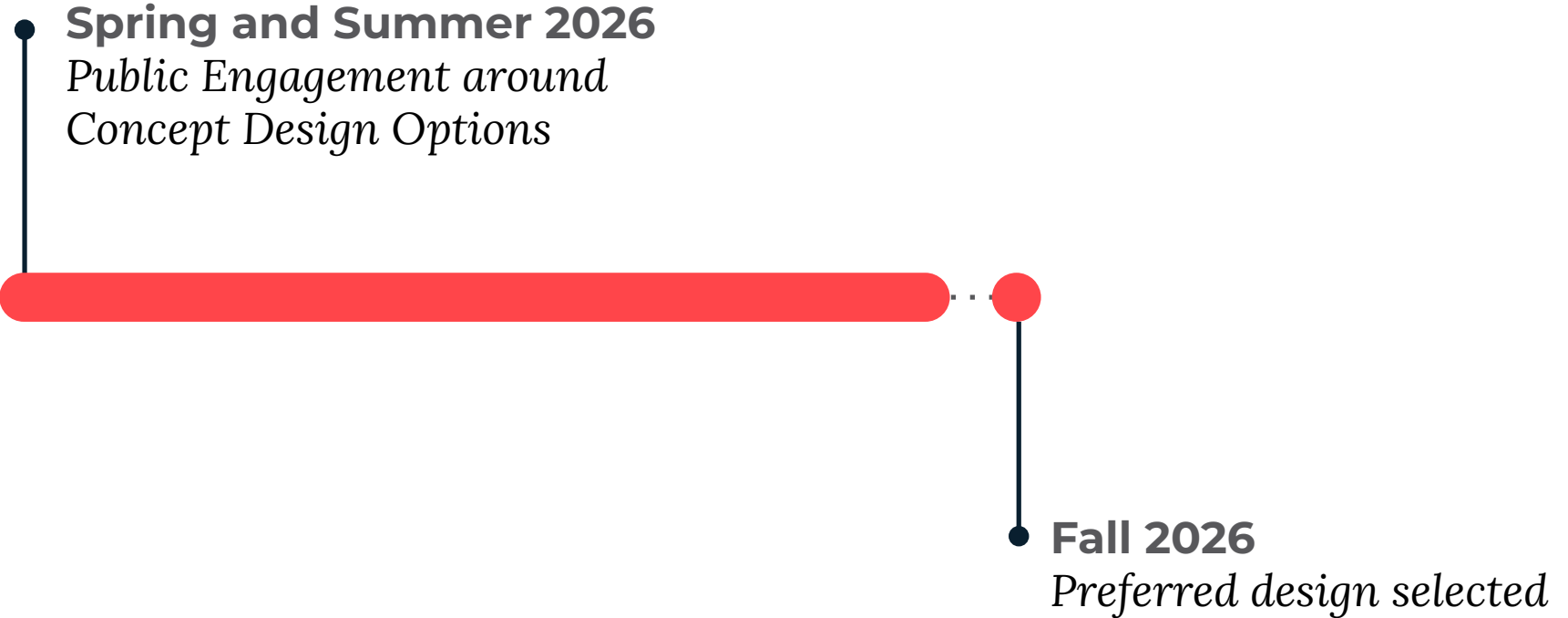
YOUR EXPERIENCE

What safety issues have you experienced at the Bennington/Saratoga intersection?

A blue-tinted photograph of a 'WELCOME TO ORIENT HEIGHTS EAST BOSTON' sign in front of a row of houses. The sign is dark blue with white text. The text on the sign reads: 'WELCOME TO ORIENT HEIGHTS EAST BOSTON CITY OF BOSTON MAYOR THOMAS W. MENINO'. The sign is partially obscured by a large, dark, leafless bush in the foreground. In the background, there is a row of multi-story houses with white siding and dark window frames. A street lamp is visible on the left side of the image.

WELCOME TO
ORIENT HEIGHTS
EAST BOSTON
CITY OF BOSTON
MAYOR THOMAS W. MENINO

WHAT'S NEXT?



UPCOMING PUBLIC ENGAGEMENT

THIS MEETING KICKS OFF THE PUBLIC PROCESS

This summer, we're planning:

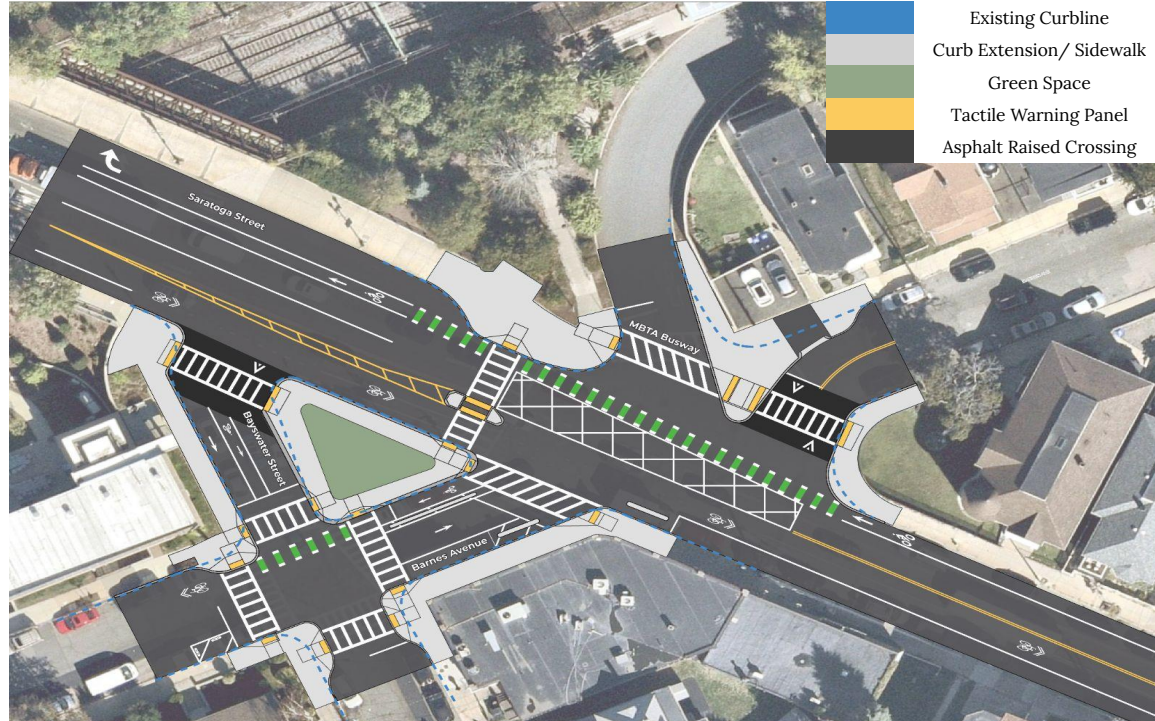
- Focus Groups/Walkshops
- An interactive design workshop
- Online public input

Visit the project website and signup for email updates:
boston.gov/bennington-saratoga-safety

NEARBY PROJECT: GOODEARL SQUARE

Proposed Design Changes:

- Raised crossing at Saratoga Street and Bayswater Street
- Raised crossing at Saratoga Street and Barnes Avenue
- Pedestrian crossing island on Saratoga Street
- Curb extensions at the intersections of Barnes Avenue and Bayswater Street
- Across the project area, we will be updating all the sidewalk ramps to be accessible for all users.



NEARBY PROJECT: GOODEARL SQUARE

NEXT STEPS

Please provide your thoughts, concerns, and evaluations.

- We will consolidate your feedback and use it to inform the next design phase
- We will send out design updates and schedule another group of meetings with updated design
- We will finish the design process in the 2026
- Construction goal: 2027 Season

Email:

BTD@boston.gov

Sign-up for email updates:

boston.gov/Goodearl

**Schedule a 15-minute meeting
with the project planner**

bit.ly/Goodearl

INTERACTIVE DISCUSSION

WHAT DO YOU THINK ARE THE MOST IMPORTANT SAFETY ISSUES AT BENNINGTON/SARATOGA?

WHAT KINDS OF DESIGN IMPROVEMENTS WOULD YOU LIKE TO SEE?

WHAT OTHER QUESTIONS DO YOU HAVE?

Use the chat to share your comments or raise your hand if you'd like to speak!

THANK YOU!

Visit the project website and sign up for email updates:
boston.gov/bennington-saratoga-safety

Want to share more ideas? Visit the interactive input website at
engagement.jmgoldson.com/BenningtonSaratoga,
or click the link in the chat.