



Bluebikes Expansion

*Open House at BCYF Roche
June 4, 2026*

Today's Open House

1. Provide information about the need for expansion.
2. Share potential sites we have identified.
3. Ask for input on which sites would be best for the neighborhood.



Bike share today

- ▶ 600+ stations (352 in Boston)
- ▶ 5600 bikes (3200 in Boston), including ~750 ebikes
 - Note: the electric assist on ebikes shuts off at 18 mph
- ▶ Publicly owned, operating in 13 municipalities
 - Lyft = operator
 - BCBS of MA = title sponsor
 - MAPC = regional facilitator
 - Municipalities = owners



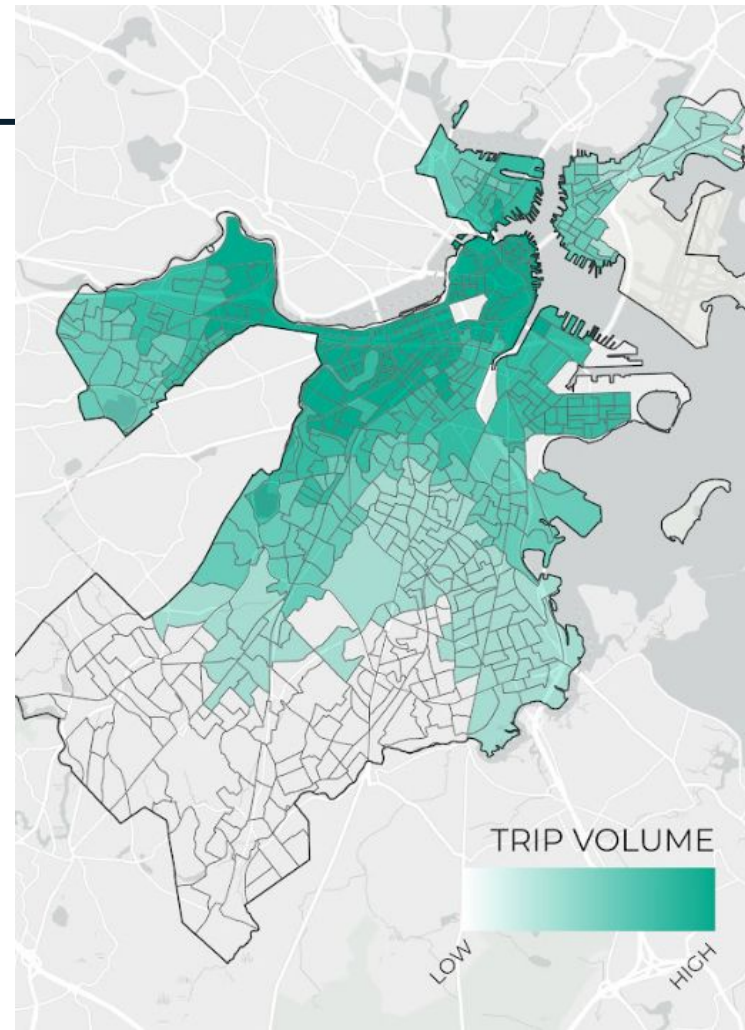
Boston residents ride for less with the Boston Bikes Pass



- ▶ Long-time income-eligible pass options:
 - \$50/year or \$5/month
- ▶ Discounts for Boston residents
 - \$5/year for income-eligible residents

Millions of trips taken

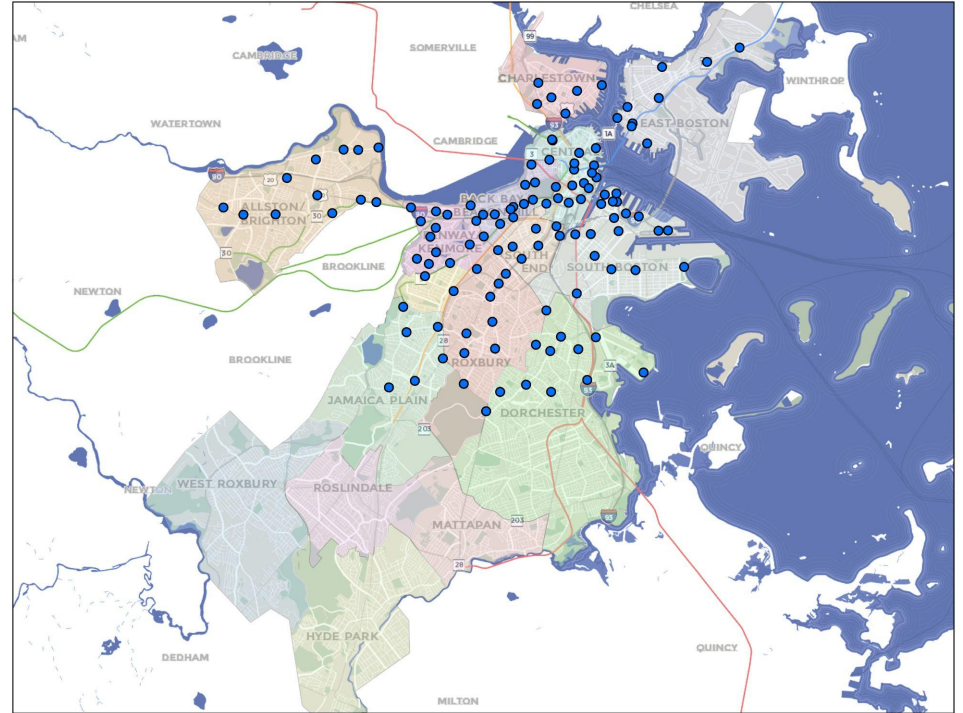
- ▶ Over **2.6 million trips** were taken on Bluebikes *just in Boston* in 2025 (and over 4.6 million systemwide).



In Boston, bike share is (almost) everywhere!

- ▶ Go Boston 2030 goal: Every household within 10-minute walk of bike share.

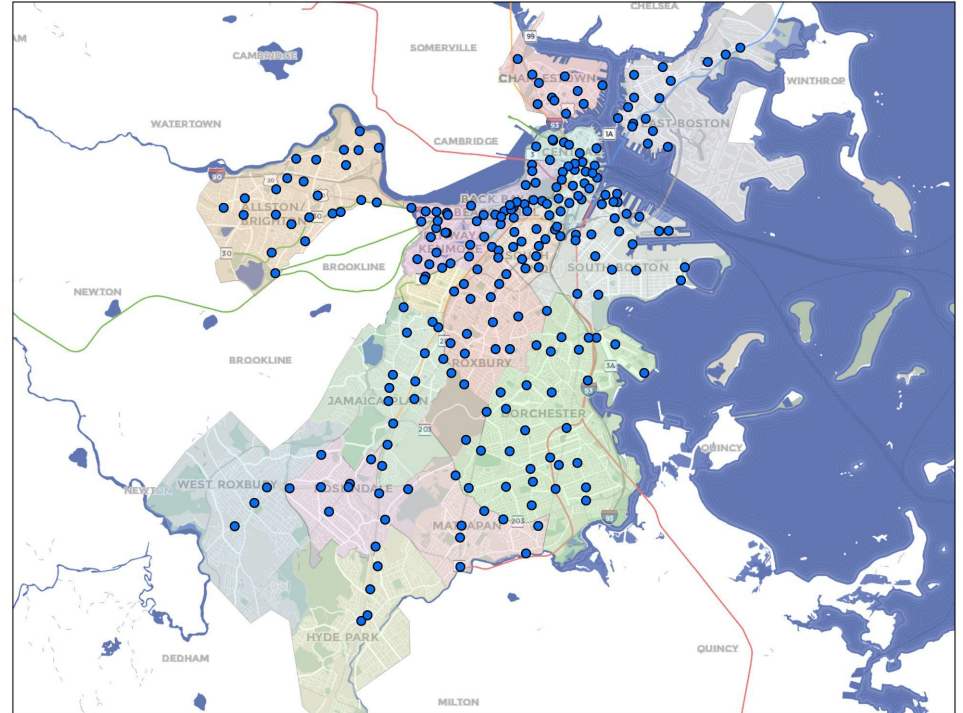
BOSTON BLUEBIKES STATIONS IN 2017



In Boston, bike share is (almost) everywhere!

- ▶ Today Bluebikes is in every neighborhood.
- ▶ ~89% of households are within a 10-minute walk.

BOSTON BLUEBIKES STATIONS TODAY



Expanding the system

100 new stations (~40% increase in Boston)

Infill Stations

Enhancing Service in High Demand Areas

Serving Latent Demand

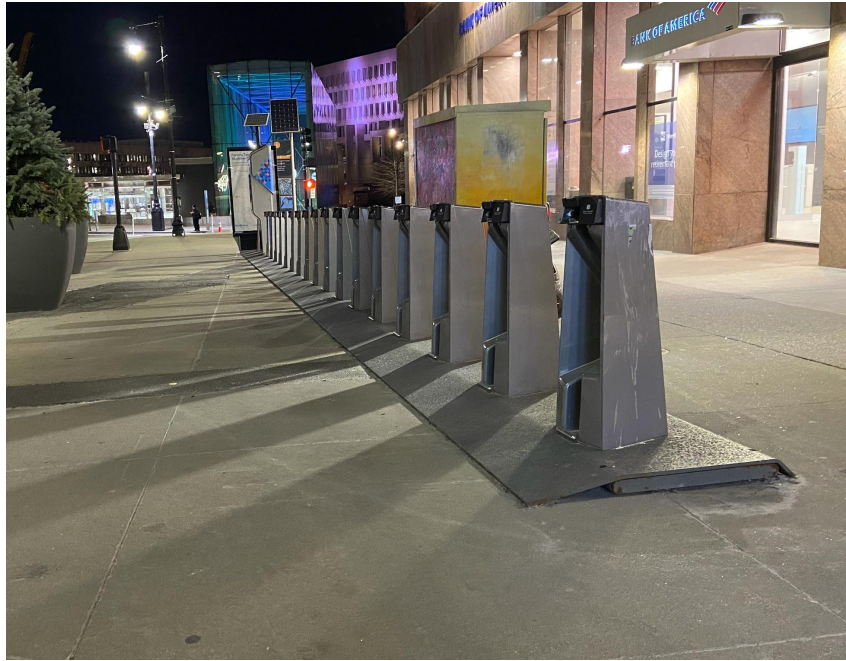
Filling Gaps in the Network

Expansion Stations

Increasing Access to the Network

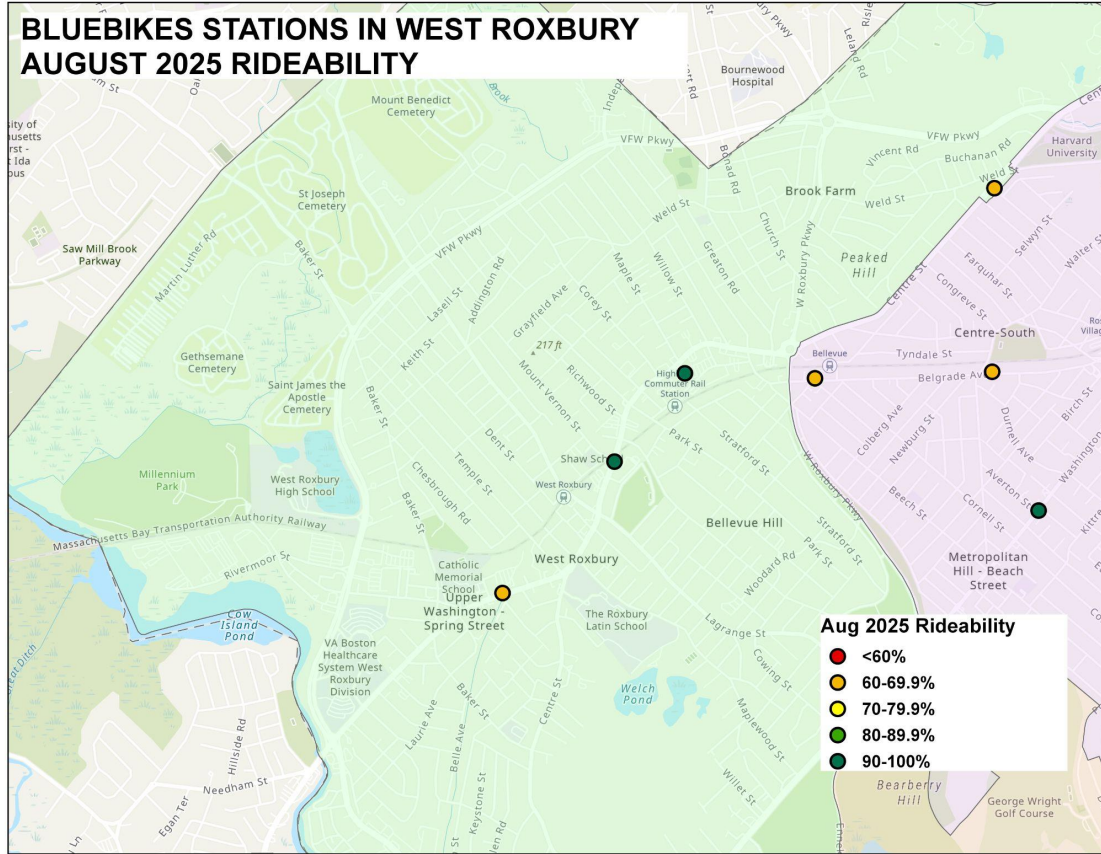
Strengthening Edges of Current Network

Analyzing the need



- ▶ Population density, job density, and “rideability”
- ▶ “Rideability” is an metric of the availability of bikes and docks.
- ▶ In denser neighborhoods, our operator must keep the system rideable 90% of the time. Less-dense areas must be rideable at least 80% of the time.

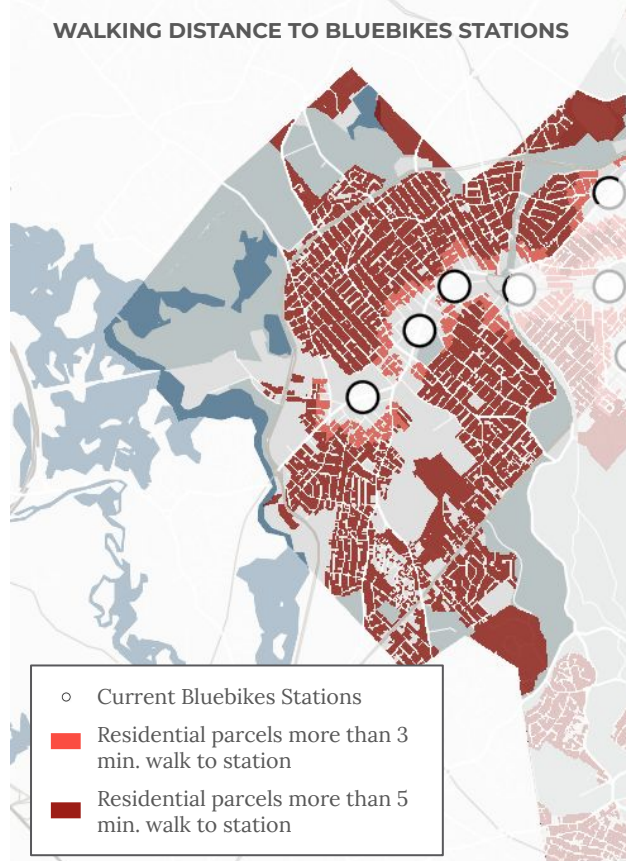
Analyzing the need: Rideability



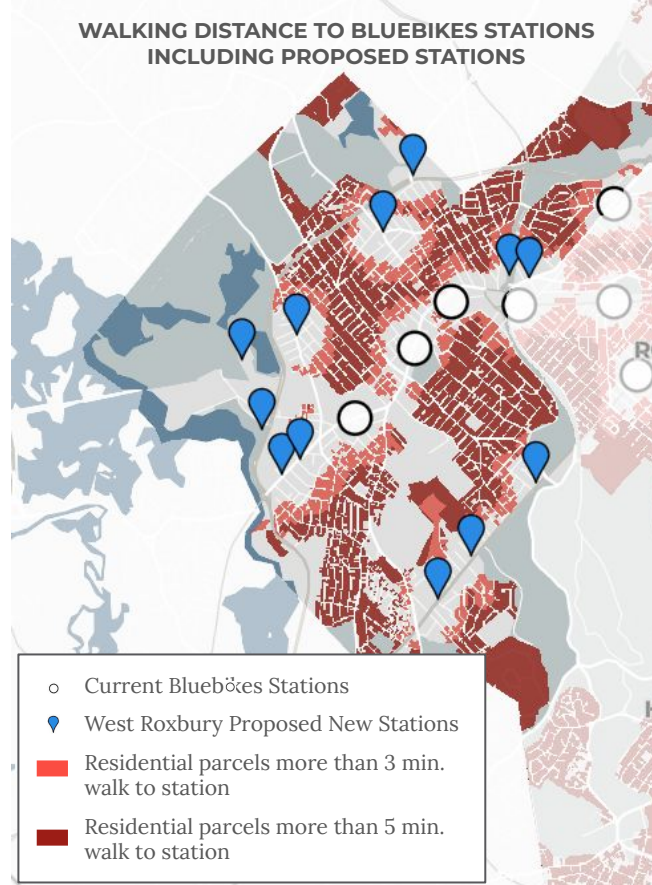
- ▶ In August, two stations in West Roxbury met the highest rideability standard (90%+)
- ▶ Two stations were rideable less than 70% of the time

Analyzing the need: Walking distance

WALKING DISTANCE TO BLUEBIKES STATIONS



WALKING DISTANCE TO BLUEBIKES STATIONS INCLUDING PROPOSED STATIONS



An increase in station density will expand access and improve reliability at existing stations. (Note, we won't install all of the proposed new stations!)

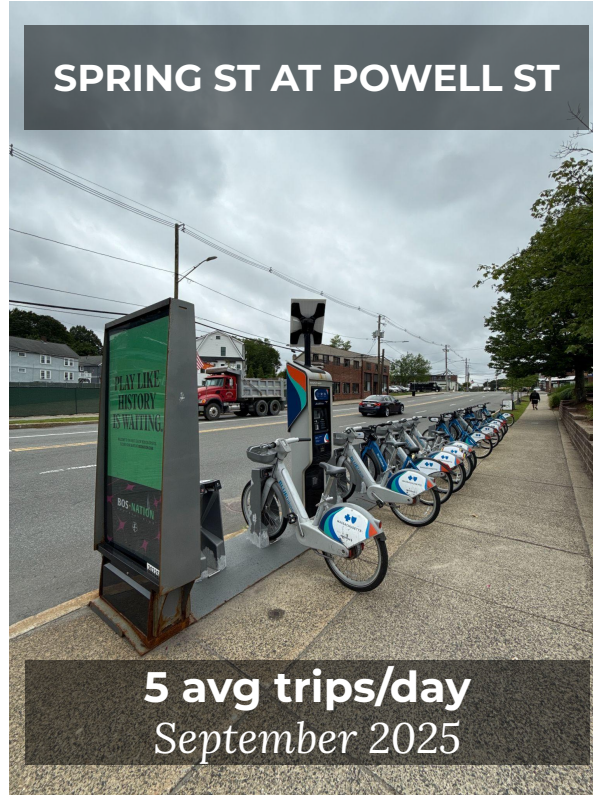
Trips Starting or Ending in West Roxbury

**CENTRE ST AT W.
ROXBURY POST OFFICE**



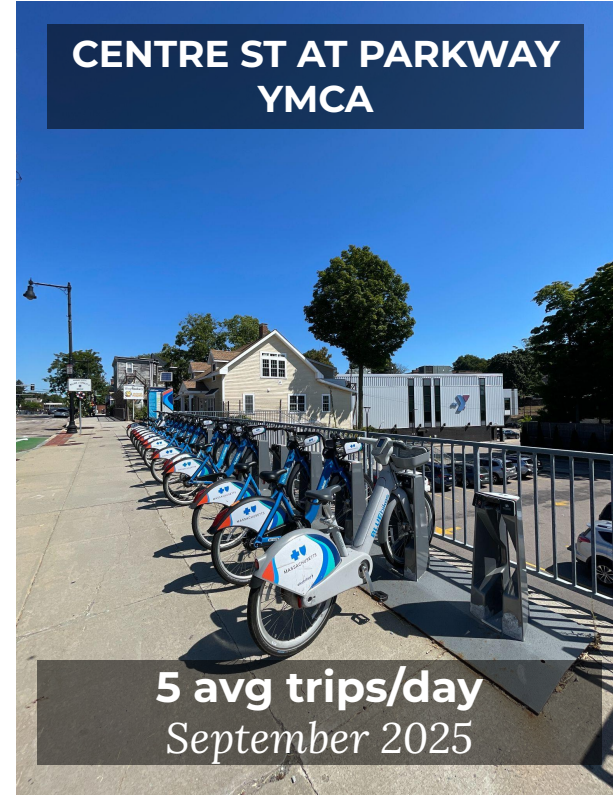
6 avg trips/day
September 2025

SPRING ST AT POWELL ST



5 avg trips/day
September 2025

**CENTRE ST AT PARKWAY
YMCA**

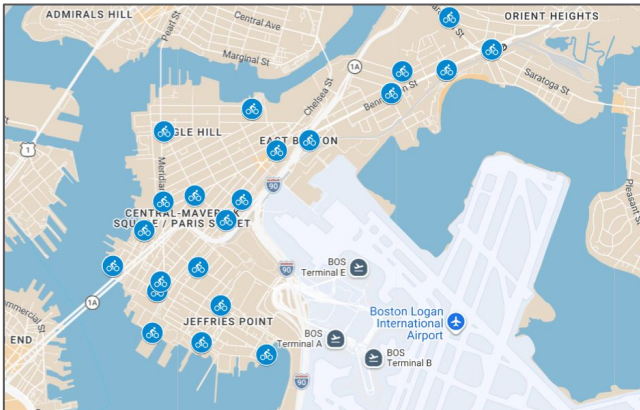
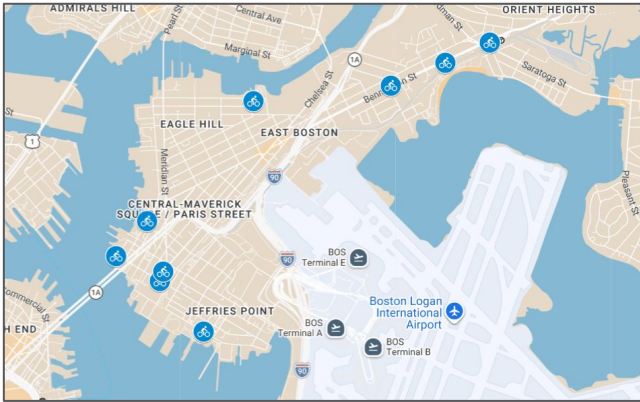


5 avg trips/day
September 2025

Trips Starting or Ending in West Roxbury

STATION	AVERAGE TRIPS/DAY SEP 2025
Centre St at W. Roxbury Post Office	6
Spring St at Powell St	5
Centre St at Parkway YMCA	5
Knoll St at Centre St	5

Case Study: East Boston expansion



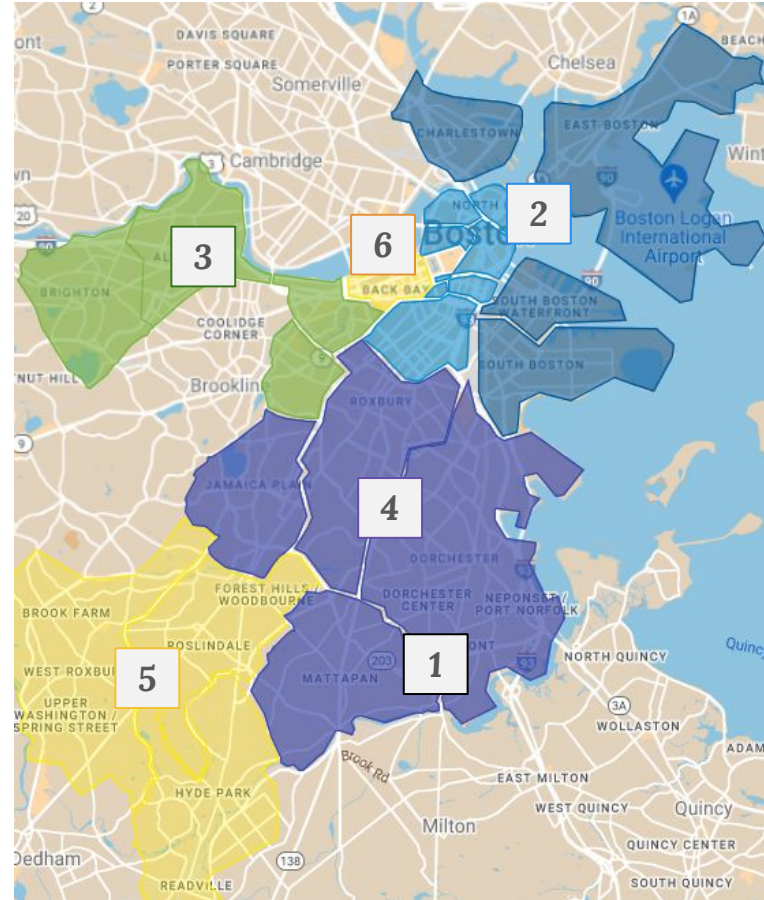
A denser network is more useful!

- ▶ Between 2019 and 2025, we doubled the number of stations in East Boston
 - From 11 to 22
- ▶ Ridership in East Boston grew almost fourfold over that period
 - Summer 2019: 16.7k trips
 - Summer 2025: 61.7k trips

We're growing in phases

We are adding new stations in phases.

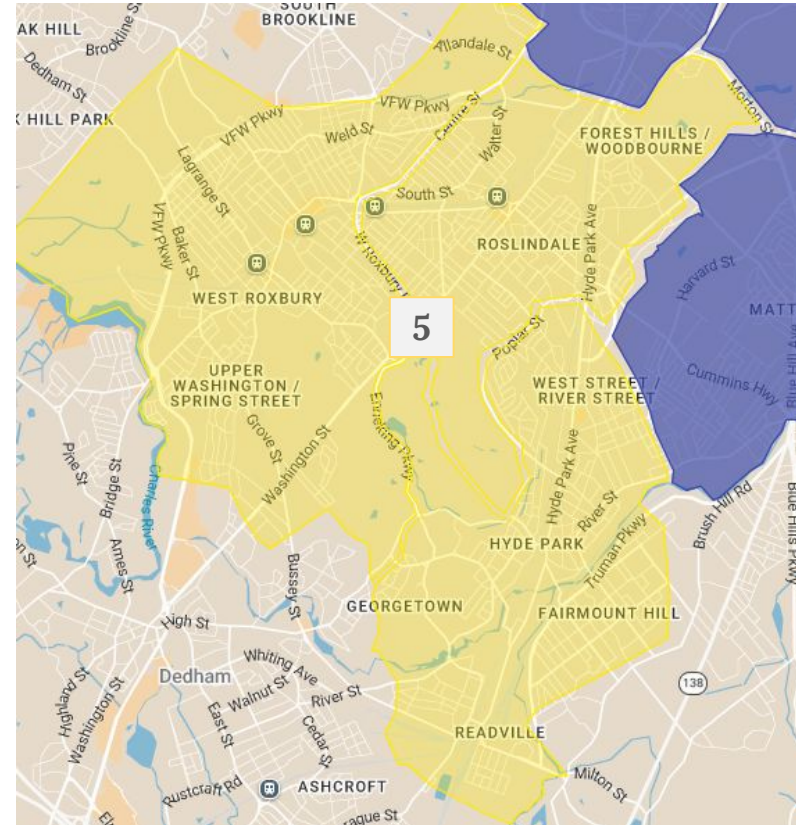
- ▶ We've installed 79 of the 100 stations
- ▶ In **Phase 5**, we aim to add up to 15 new stations.



Phase 5

Hyde Park, Roslindale, West Roxbury

- ▶ May - June | Community engagement
- ▶ Summer 2026 | Installation begins
 - Hyde Park: 3-5 new stations
 - Roslindale: 3-7 new stations
 - West Roxbury: 2-4 new stations



Community engagement for this phase

- ▶ 4 Open Houses
 - June 2, BCYF Roslindale
 - June 4, BCYF Roche, West Roxbury
 - June 8, virtual
(tinyurl.com/expansion-june)
 - June 10, BCYF Hyde Park
- ▶ Online Surveys
(boston.gov/bike-share-survey)
 - We've posted flyers in the neighborhood and signs at each site directing people to the surveys.



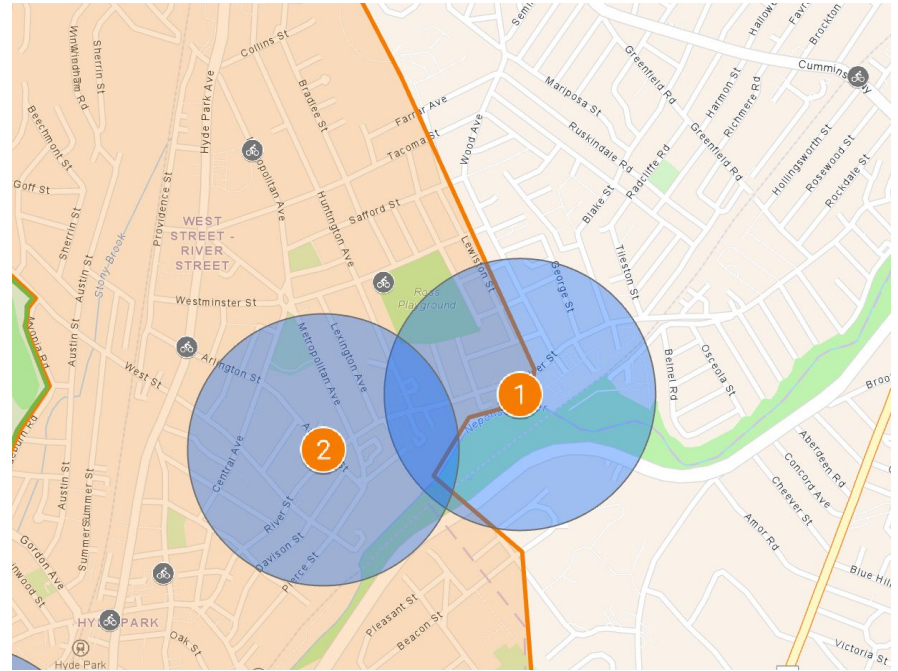
What's next for us?

- ▶ Consider all comments from Open Houses, surveys, and email
- ▶ Narrow down our list of sites
- ▶ Finalize locations and get permits

Being dense is a good thing

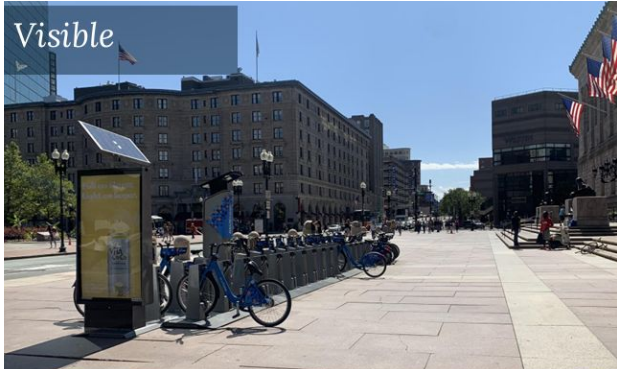
Good locations are not too far apart from each other

- ▶ More nearby stations means more places to find a dock or a bike
- ▶ Ideally an easy walk - $\frac{1}{2}$ mile maximum



Station siting requirements

Good locations are...

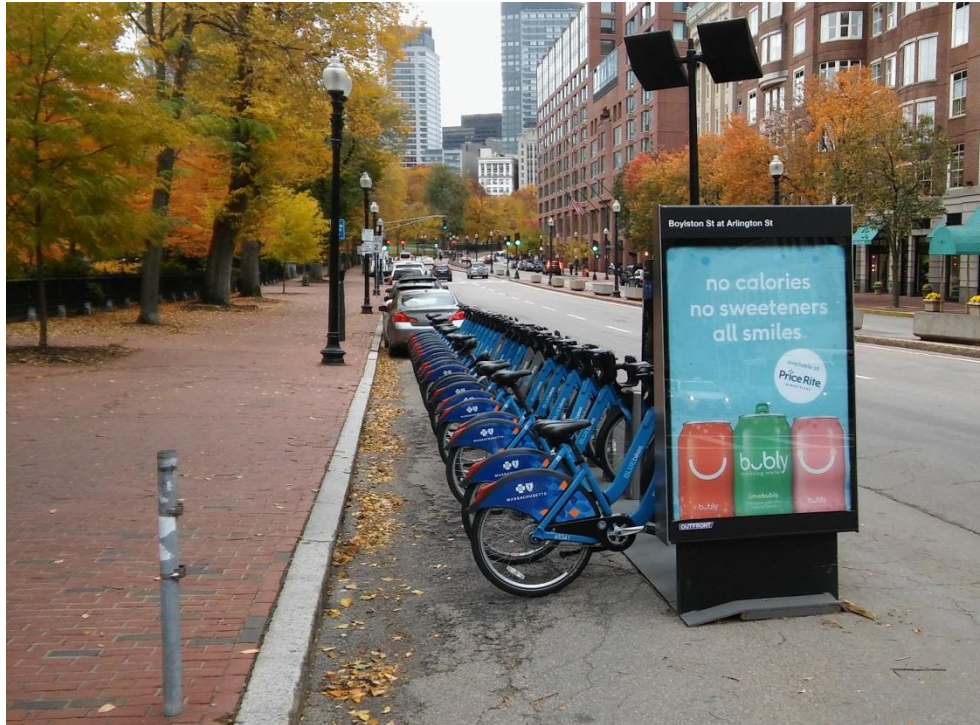


Off-Street: Sidewalks, Plazas

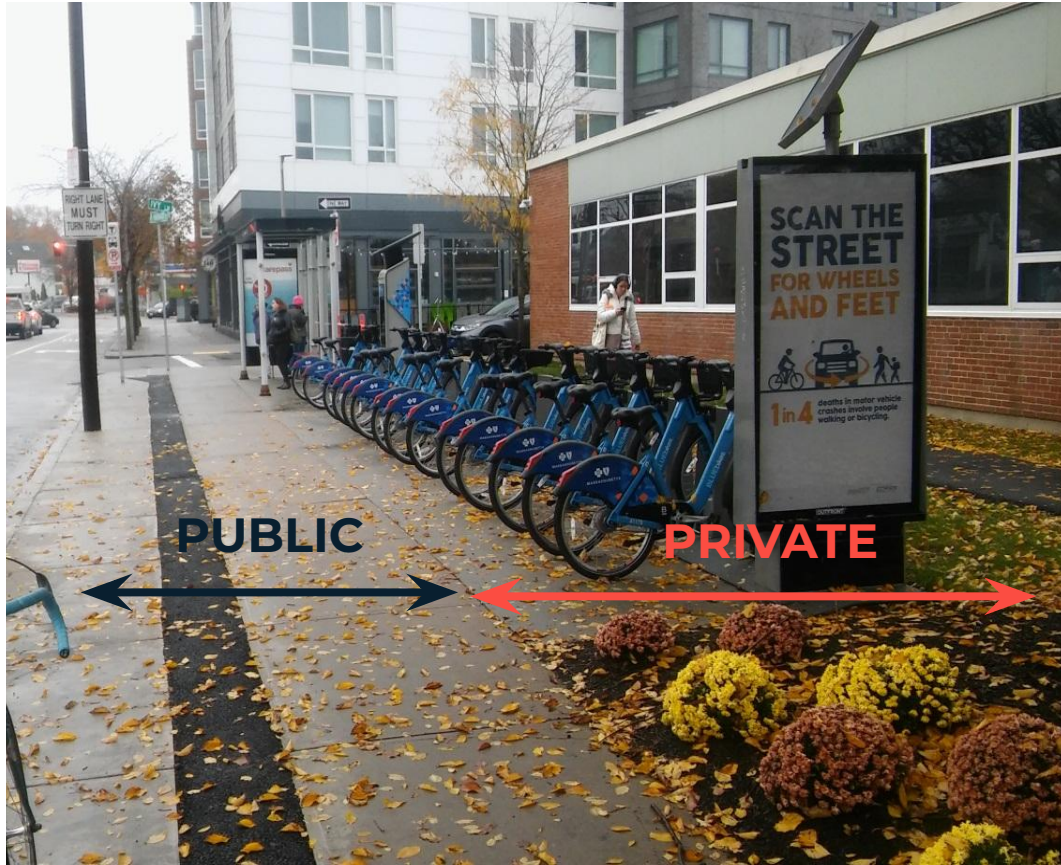


In-Street: Parking Lanes

A station with parking for 15 bikes takes the same space as two cars



Private Property



Other Agencies and Departments

*MBTA and DCR will sometimes host our stations
Agencies/departments must agree and sign legal documents*



Review potential sites

Open House

- ▶ Sites are arranged by neighborhood.
- ▶ Visit each table to review and give comments.
- ▶ Staff are available to answer questions

Survey(s)

- ▶ You can share comments by survey through the end of June. Spread the word!

boston.gov/bike-share-survey

Review sites and share your thoughts

- ▶ *Where do you travel to/from in this neighborhood?*
- ▶ *What do you like/dislike about the site?*
- ▶ *What do you know about the site that we might not know?*

Ideas? Questions? Comments?

- ▶ boston.gov/bike-share-expansion
- ▶ bikeshare@boston.gov