

ST. JAMES STREET PARK

39 ST. JAMES STREET, ROXBURY, MA, 02119

Community Meeting #2



May 20, 2026
Boston Parks and Recreation



MEETING RECORDING



The Boston Parks and Recreation Department will be recording the meeting and posting to our project webpage for those who are unable to attend the Zoom meeting live.

It is possible that participants may also be recording the meeting with their phones cameras or other devices. If you do not wish to be recorded during this meeting, please keep your microphone muted and camera off.

*Please share with your neighbors and friends,
boston.gov/st-james-street*

VIRTUAL MEETING ETIQUETTE

We want to ensure this conversation is a pleasant experience for all and that all community members/stakeholders are comfortable sharing their comments, questions and feedback.

Please be respectful and mindful of each other's time when asking questions/ providing comments, so that all attendees are able to participate in the meeting.

Keep questions/ comments project-specific and not personal to yield solution-driven discussion.

Please wait until all attendees have had the opportunity to ask a question/ provide a comment before providing additional questions/ comments.

*You can always set up a conversation with **Kenya Thompson**, kenya.thompson2@boston.gov, to further discuss the project or process.*

ZOOM TIPS

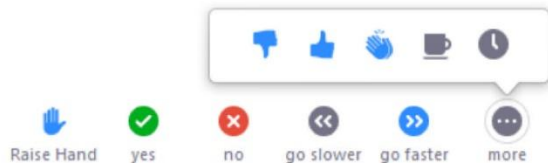
Here is how you can participate during the question and answer part of the presentation.

DURING THE PRESENTATION:



VIA WEB:

Turn video on / off.



To use these non-verbal options click on participants (bottom of screen); these options will pop up in side bar.

DURING THE Q&A:



JOINING VIA PHONE?

Use *9 to raise hand to ask for audio / video permission to ask questions or provide comments.



VIA WEB:

Chat to ask questions / comments or provide responses to poll questions



Raise hand to ask for audio / video permission to ask questions or provide comments.

AGENDA

1

PROJECT TEAM INTRODUCTION

2

PROJECT OVERVIEW

3

PRESENTATION

4

LISTENING & DISCUSSION

5

CLOSING REMARKS & NEXT STEPS

PROJECT TEAM

CITY OF BOSTON

KENYA THOMPSON

PROJECT MANAGER

kenya.thompson2@boston.gov or 617-961-3098

MY'KEL McMILLEN

OUTREACH COORDINATOR, EXTERNAL AFFAIRS

corey.mcmillen@boston.gov or 617-201-1294

G2 COLLABORATIVE LANDSCAPE ARCHITECTURE

LISA GIERSBACH

Principal

JAMES PFEIFFER

Senior Associate

JONATHAN KUHR

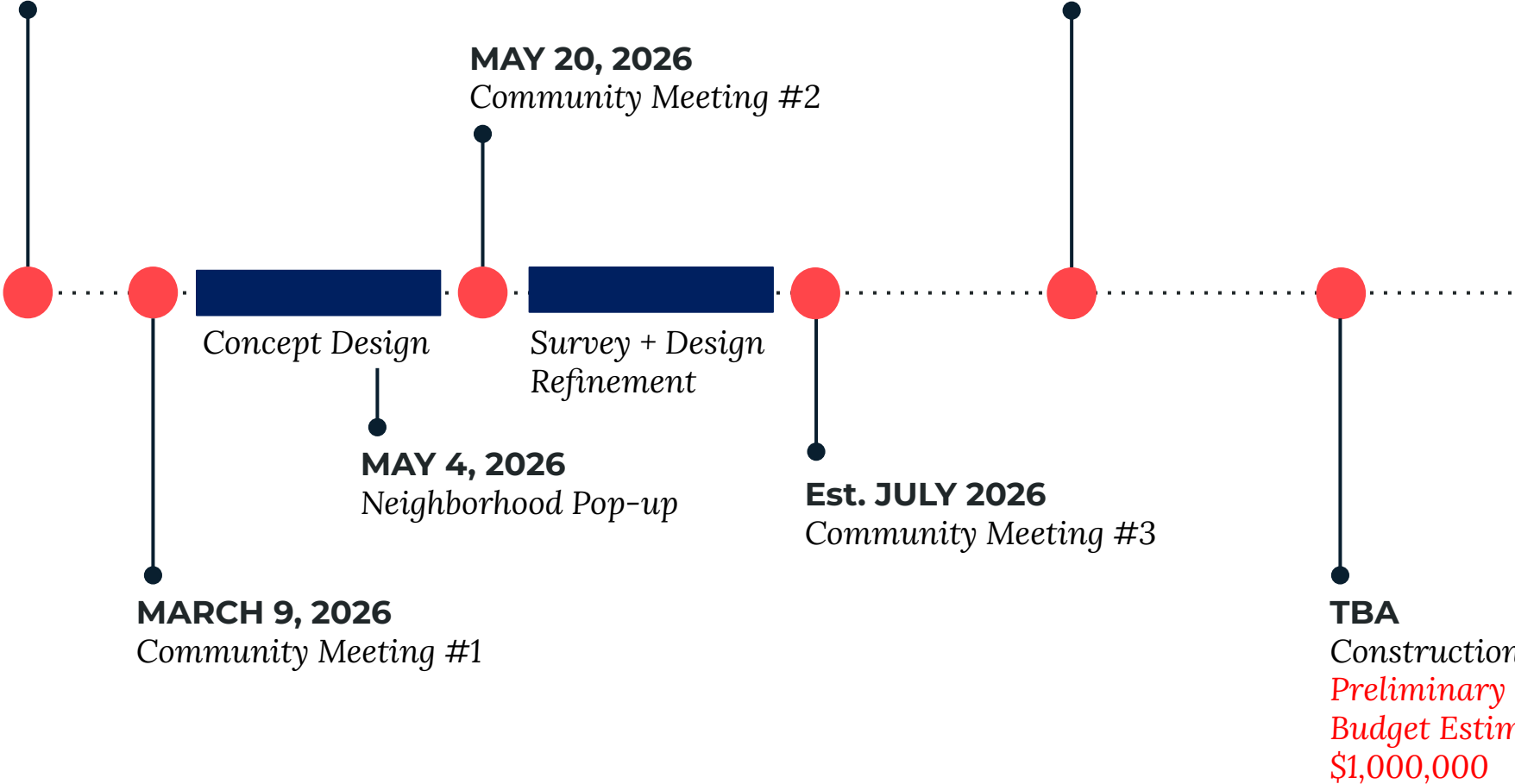
Landscape Designer



PROJECT SCHEDULE

JANUARY 2026

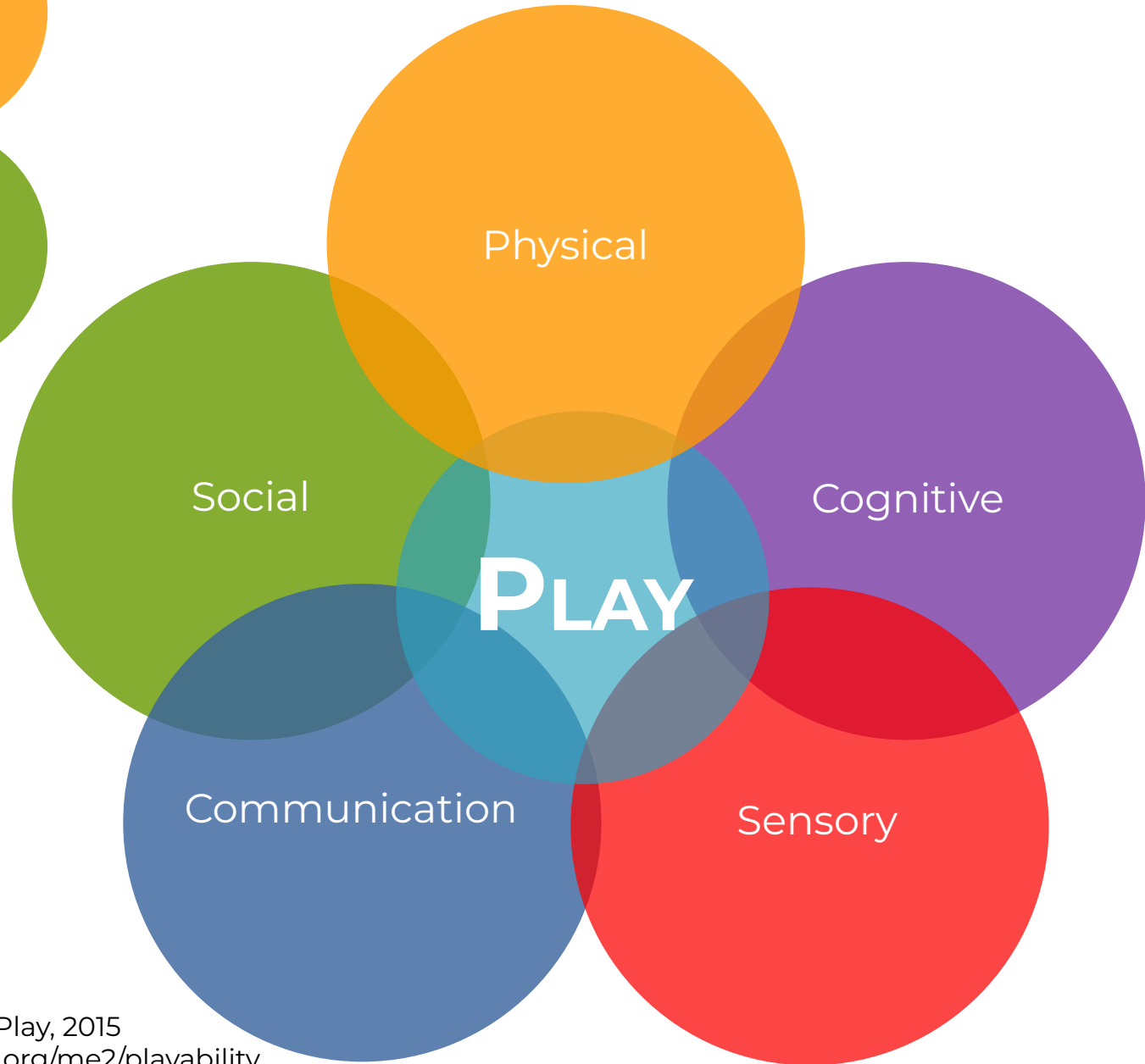
St. James Street Park Project Kick-Off



FALL 2026

Design Development + Construction Documents

TBA
Construction
Preliminary Budget Estimate: \$1,000,000

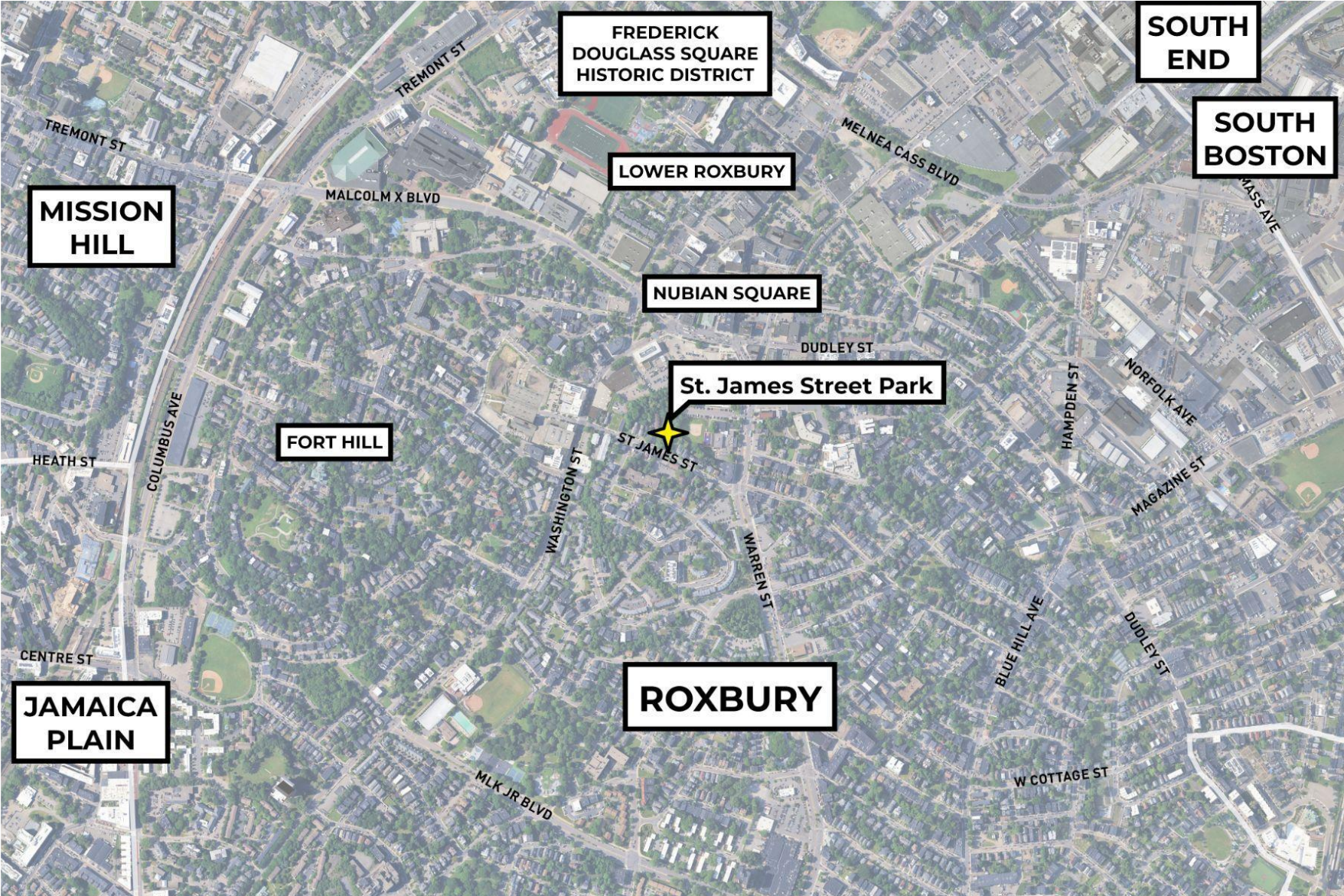


THE **5** ELEMENTS OF PLAY

PROJECT OVERVIEW

An aerial photograph of a residential neighborhood, overlaid with a semi-transparent blue filter. The image shows several houses with grey roofs, green lawns, and numerous trees. A street with parked cars runs vertically on the left side. In the center, there is a circular area that appears to be a playground or a small park with some equipment. The overall scene is a typical suburban residential area.

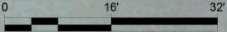
PARK CONTEXT



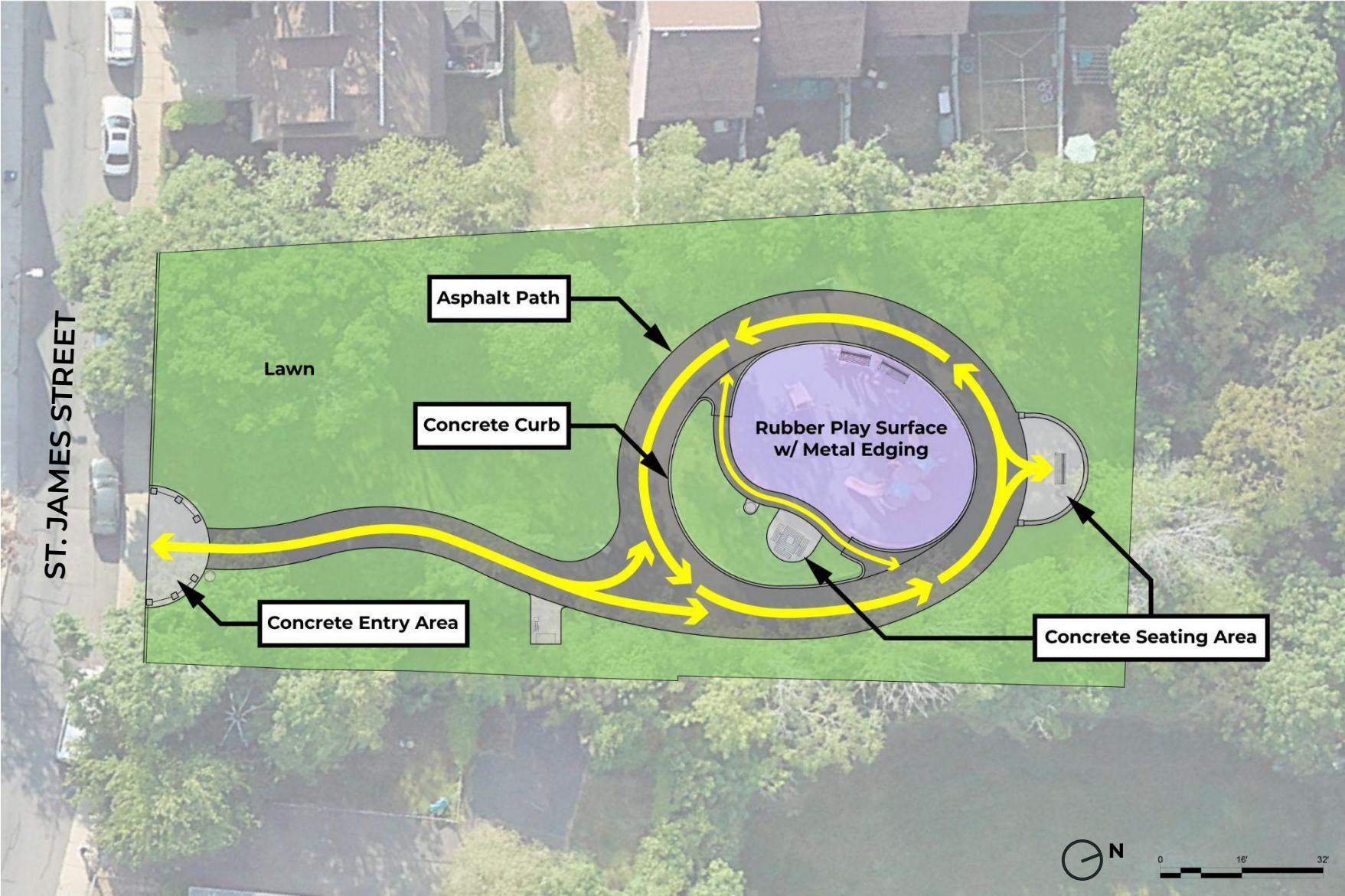
EXISTING LAYOUT AND ACTIVITY



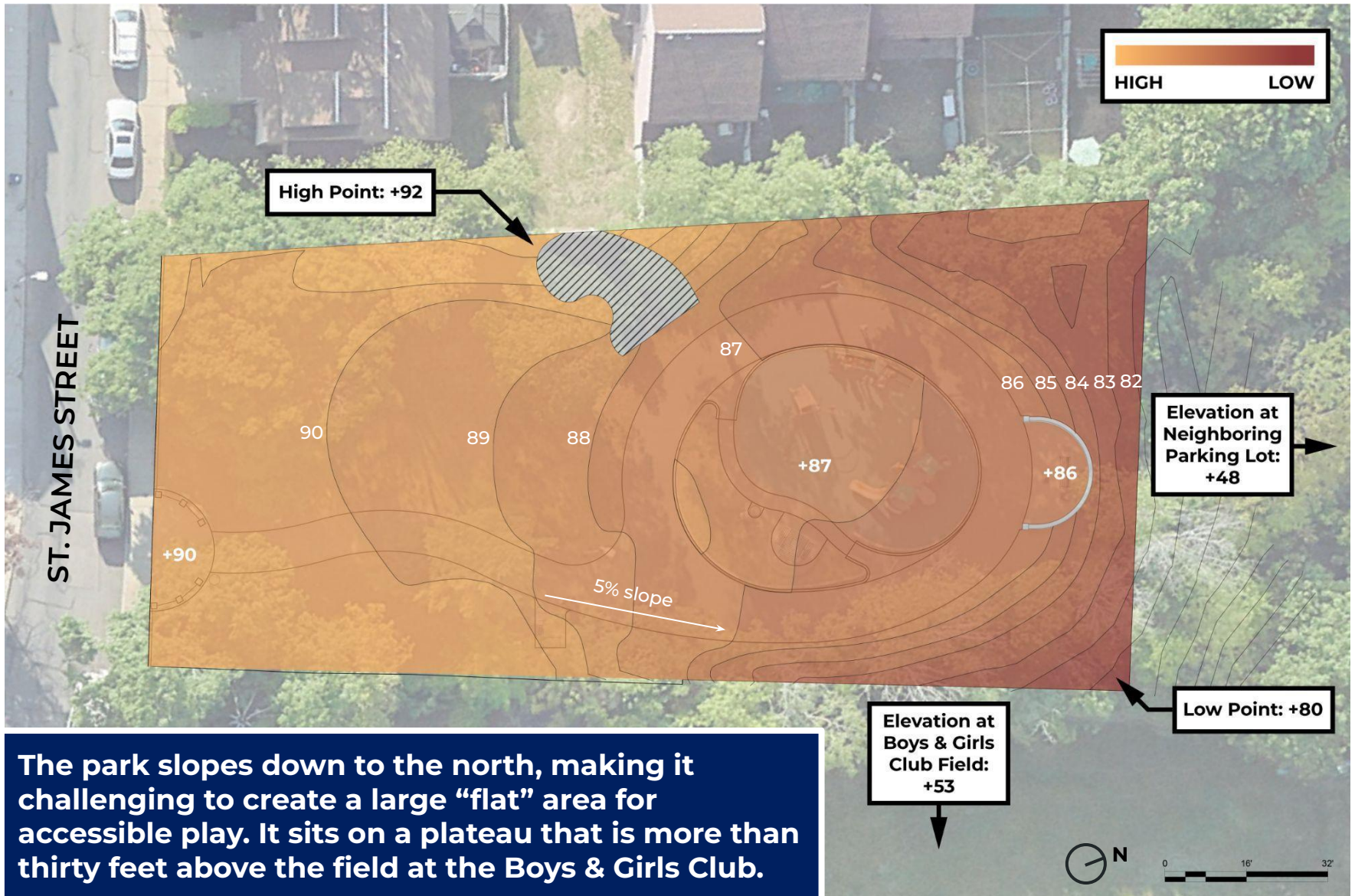
Much of the space in St. James Street Park is open space for passive play. Some areas have limited access due to steep slopes.



EXISTING CIRCULATION AND MATERIALS



EXISTING TOPOGRAPHY



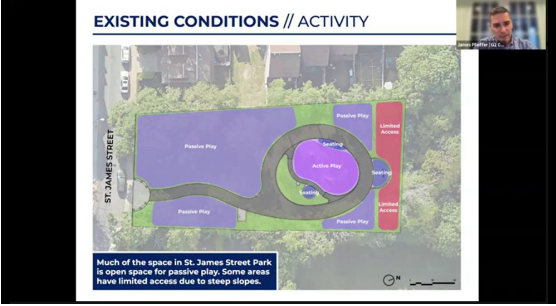
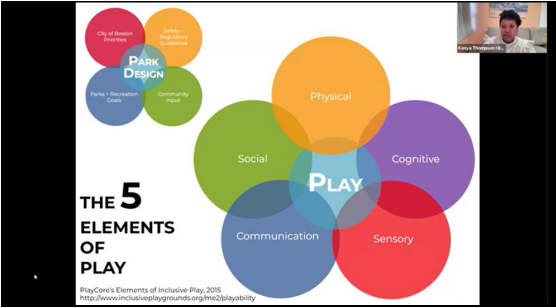
The park slopes down to the north, making it challenging to create a large “flat” area for accessible play. It sits on a plateau that is more than thirty feet above the field at the Boys & Girls Club.

WHAT WE'VE HEARD

An aerial photograph of a residential neighborhood, overlaid with a semi-transparent blue filter. The image shows several houses with grey roofs, green lawns, and numerous trees. A circular playground area with colorful equipment is visible in the center. A road with parked cars runs along the left side, and a parking lot with several vehicles is on the right. The overall scene is a typical suburban residential area.

IDEA-SHARING OPPORTUNITIES

Community Meeting #1 (Virtual)



- LISTENING + DISCUSSION**
- What do you like most about St. James Street Park?
 - What makes you come to this park vs. others?
 - What new features would make St. James Street Park even better?
 - Is there anything we haven't mentioned that is important for us to know about the park?
 - How would you like to meet moving forward? Virtually or in-person? At the park or another venue?

Pop-up in the Park (May 4, 2026)



Online Survey

What do you think is missing from the park? (Choose all that apply)

- Trees/Planting
- Shade Structure
- Seating
- Tables
- Play Equipment for 6-23 Month Olds
- Play Equipment for 2-5 Year Olds
- Play Equipment for 5-12 Year Olds
- Play Equipment for Teens
- Fitness Equipment
- Water Play
- Other: _____

How do you feel about the existing play equipment in the park?

- Strongly Like It
- Like It
- Neither Like It or Dislike It
- Dislike It
- Strongly Dislike It
- No Opinion/Don't Use It

Which of these types of play equipment do you think would be the best addition to St. James Street Park?



YOUR IDEAS - PARK



Center intergenerational use



Create space for community gatherings and events



Serve neighbors with and without dogs



Add seating, particularly closer to the park entrance



Keep the lawn for passive recreation and programs



Preserve and enhance views toward Downtown Boston

YOUR IDEAS - PLAY



Provide play opportunities for all ages and abilities



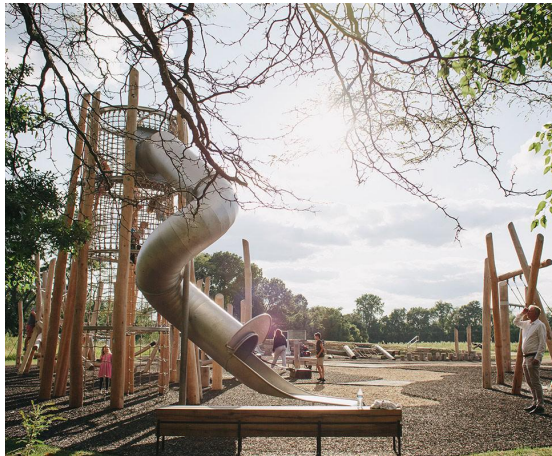
Consider play space that is unlike other nearby parks



Incorporate water play



Use the site's natural features for play



Create spaces for swinging, sliding, and climbing



Create spaces for going over, under, and through

DESIGN CONCEPTS

An aerial photograph of a residential neighborhood, overlaid with a semi-transparent blue filter. The image shows several houses, streets with parked cars, and a large area of trees. In the center of the image, a circular area is highlighted with a blue border, containing a small, colorful illustration of a house and a tree, representing a design concept. The text "DESIGN CONCEPTS" is written in large, white, bold, sans-serif capital letters in the upper left corner.

DESIGN CHARACTER

The inspiration for our design thinking is rooted in the natural features of the park site and the prevailing sense of community that neighbors hope to infuse in the park.



EXPOSED ROCK LEDGE



VEGETATION



TOPOGRAPHY

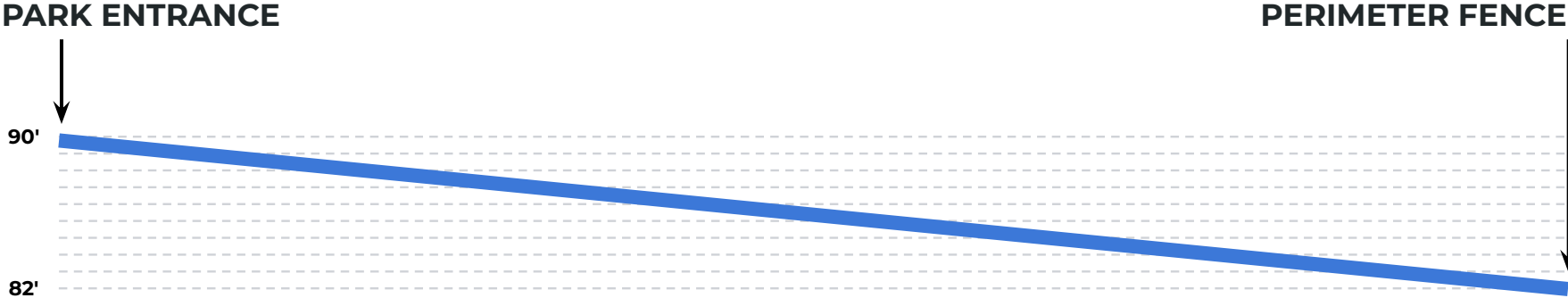


COMMUNITY / INTERGENERATIONAL PLAY

DESIGN FRAMEWORK

The objective of our initial proposals is to explore different ways to address the change in elevation (ground height from sea level) across the site.

There is currently 8 ft. of elevation change from the park entrance to the northern property edge:



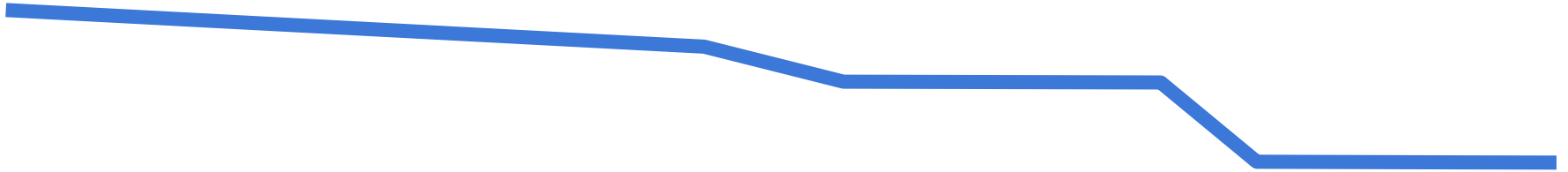
(HEIGHT SCALE EXAGGERATED FOR CLARITY)

DESIGN FRAMEWORK

We have developed three design ideas that address this elevation change in different ways:

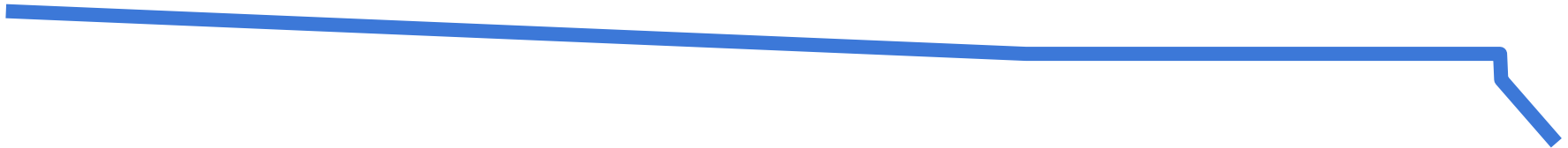
STRATA

Three levels of gathering and play step down across the site



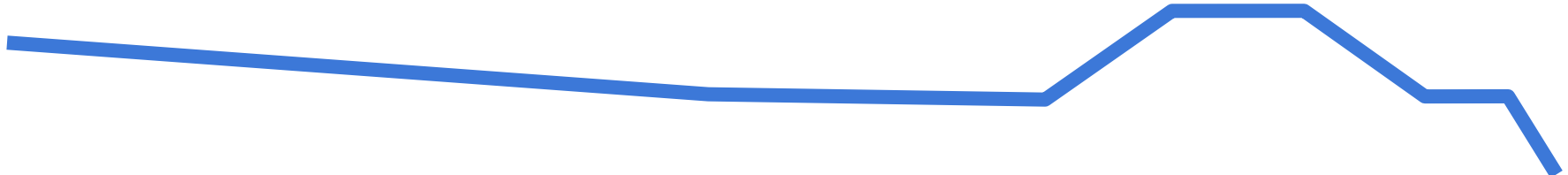
STREAM

A gentle slope across the site is made possible by a perimeter retaining wall



STACK

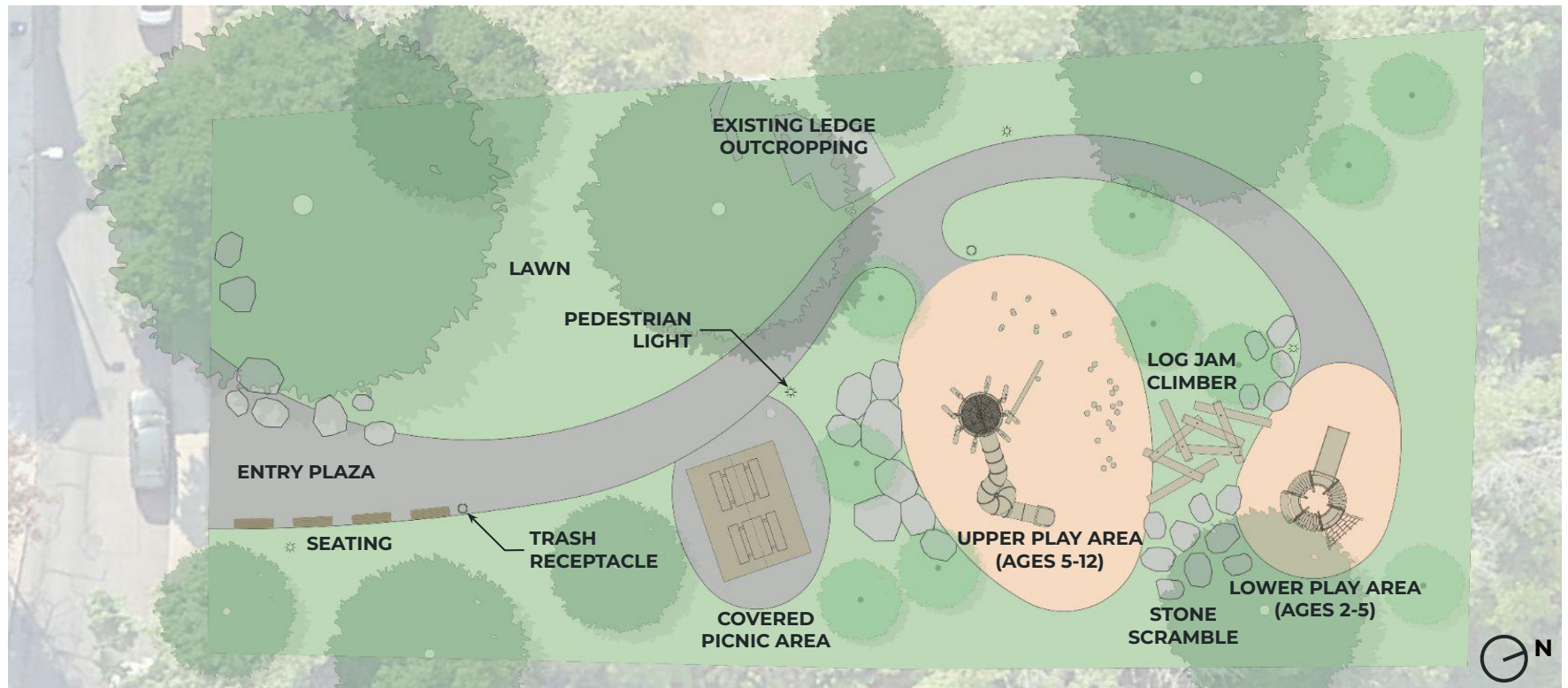
A new hill creates a vista and emphasizes the elevation change



(HEIGHT SCALE EXAGGERATED FOR CLARITY)

SITE DESIGN IDEA #1 - STRATA

Layers of Play // Three terraces of gathering and play that step down along an accessible path



SITE DESIGN IDEA #1 - STRATA

Layers of Play // Three terraces of gathering and play that step down along an accessible path



SHADE STRUCTURE OVER SEATING



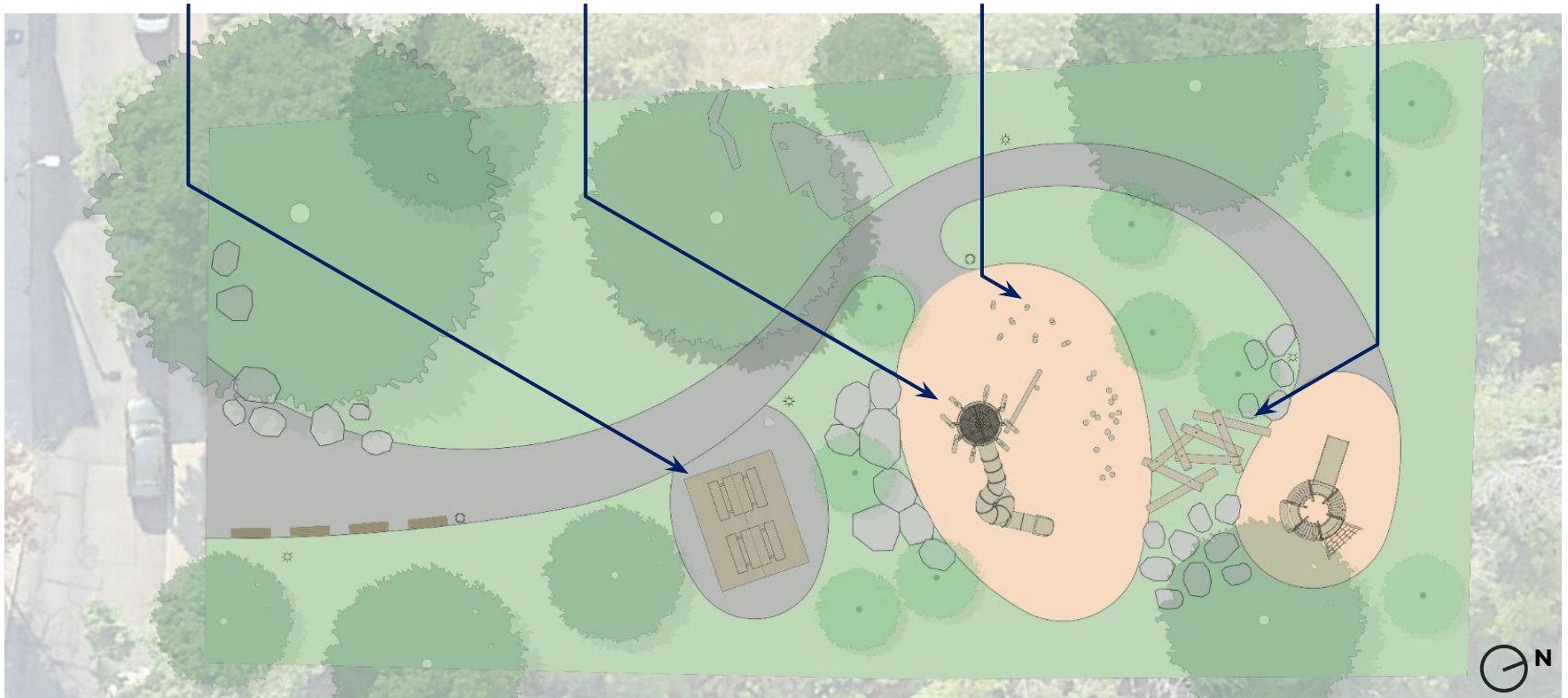
PLAY TOWER WITH SLIDE



CLIMBING LOGS

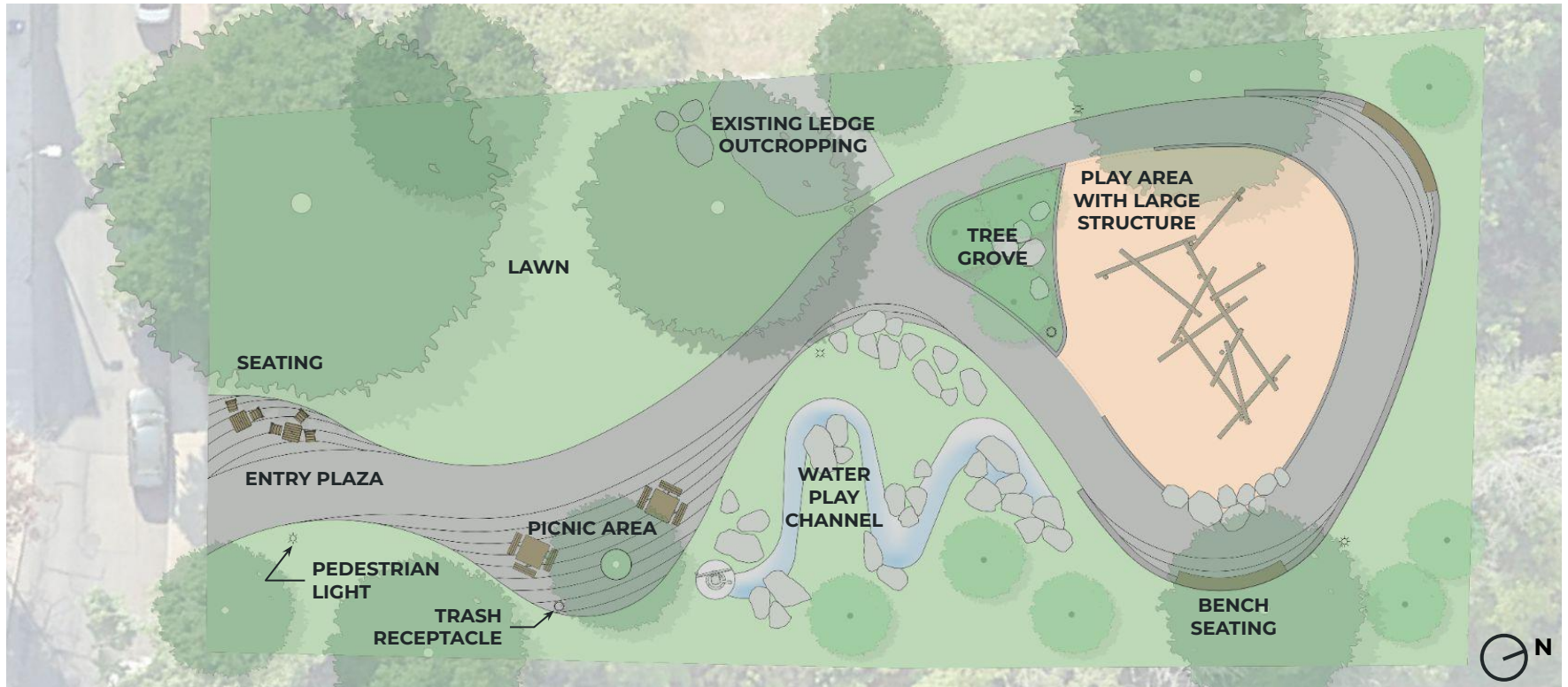
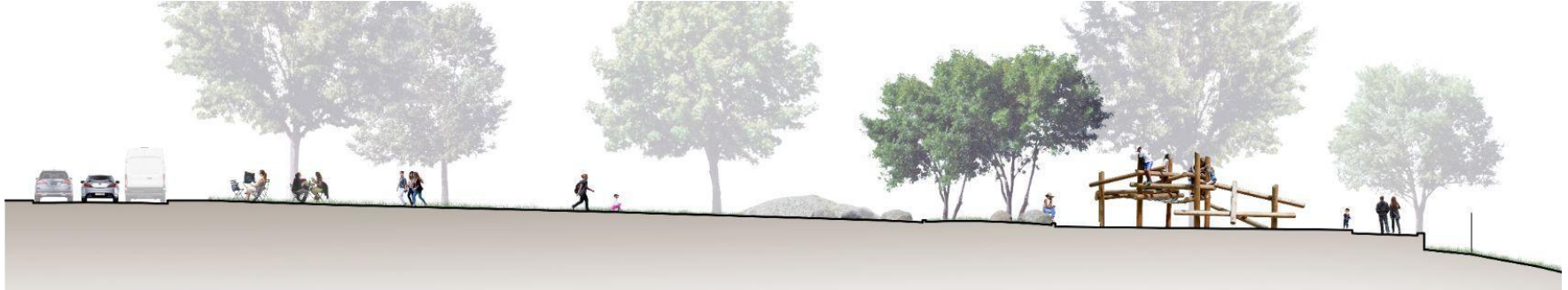


LOG AND STONE SCRAMBLE UP HILL



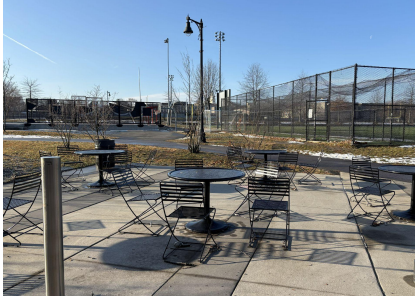
SITE DESIGN IDEA #2 - STREAM

Meandering Park // A flowing path widens, thins, and loops to create spaces for gathering and play



SITE DESIGN IDEA #2 - STREAM

Meandering Park // A flowing path widens, thins, and loops to create spaces for gathering and play



BISTRO TABLES AND CHAIRS



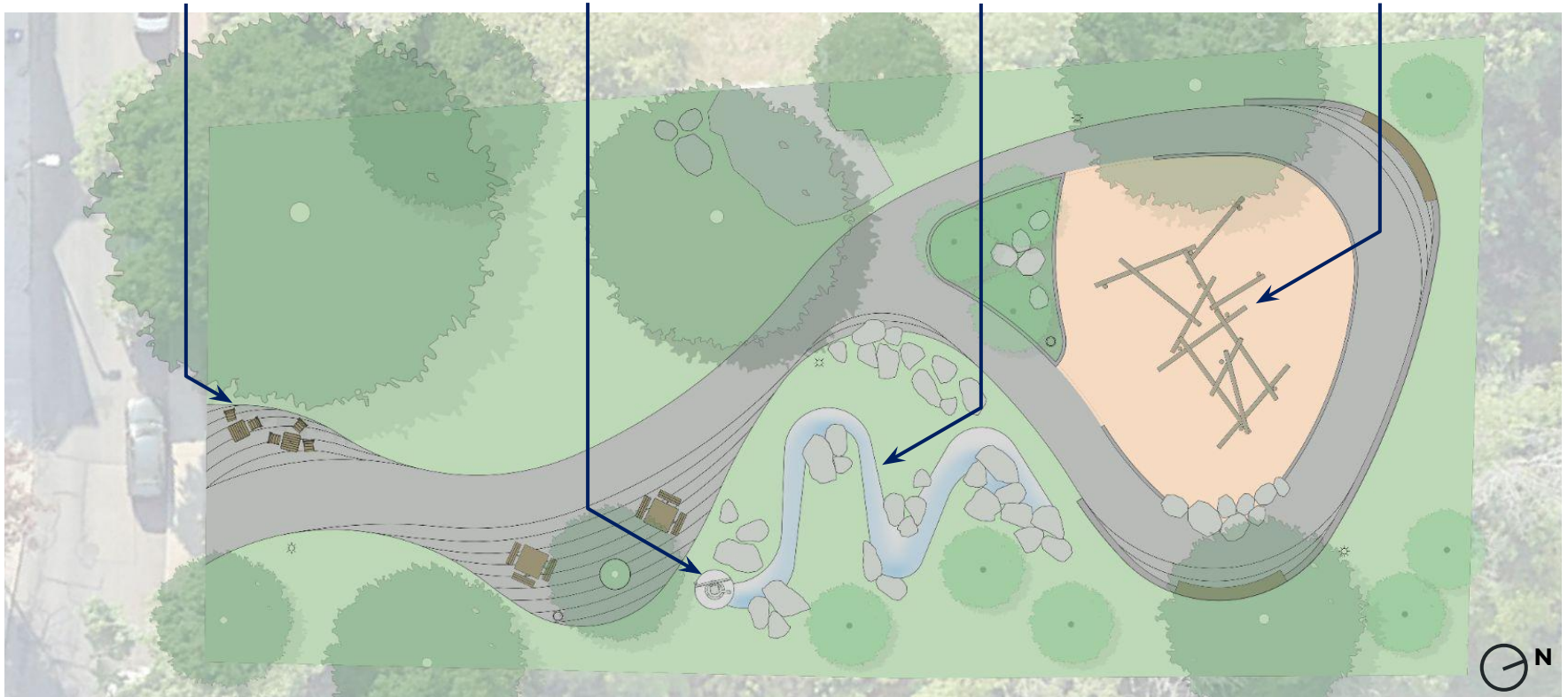
WATER PUMP AND PLAY TABLES



WATER PLAY CHANNEL



LOG JAM CLIMBER



SITE DESIGN IDEA #3 - STACK

Stacked Boulders and Earth // A hill provides views and seating that overlooks water play and lawn



SITE DESIGN IDEA #3 - STACK

Stacked Boulders and Earth // A hill provides views and seating that overlooks water play and lawn



LAWN FOR PASSIVE RECREATION



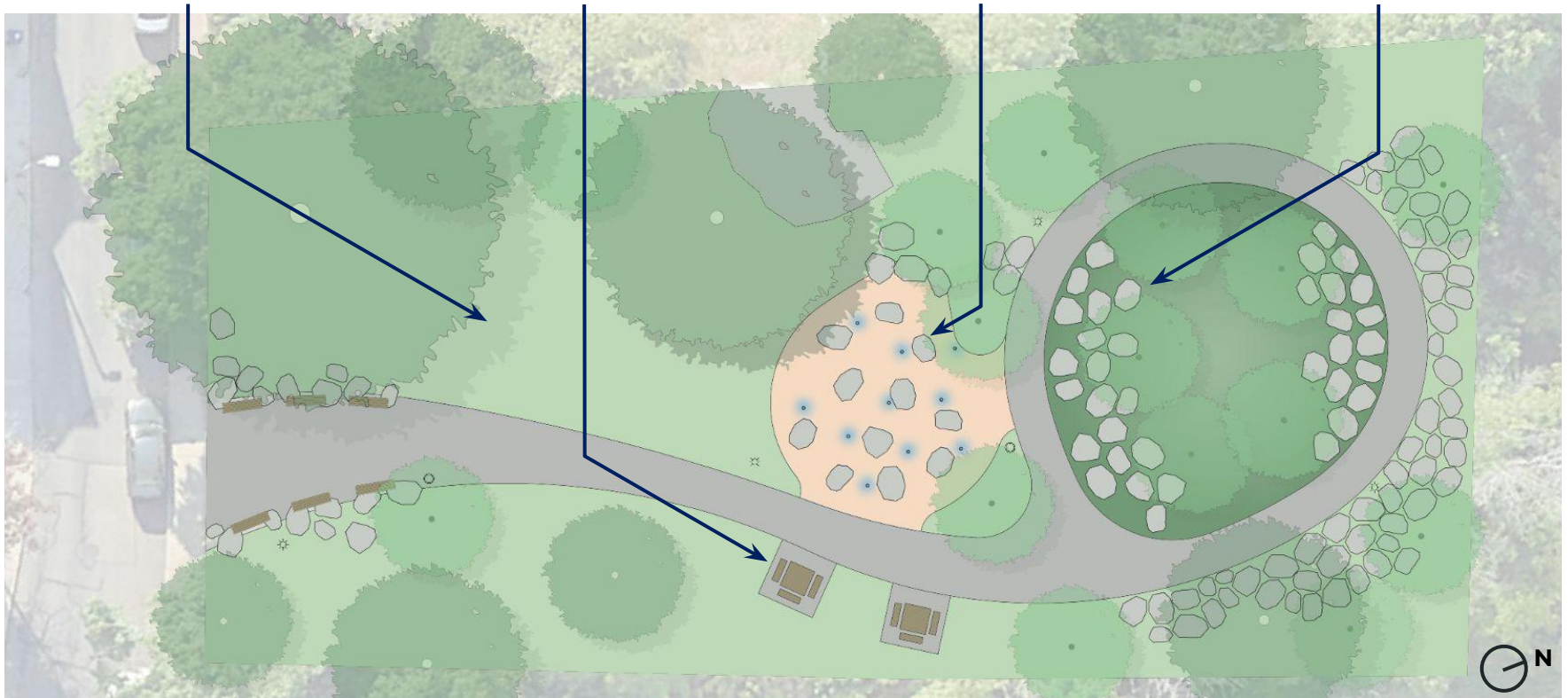
PICNIC AREA



SPLASH PAD WITH FOUNTAINS



BOULDER AMPHITHEATER



SITE DESIGN IDEAS

STRATA



- Three terraces along an accessible path
- Entry plaza with benches
- Shade structure over picnic area
- Option to divide play based on age
- Opportunities to climb between terraces

STREAM



- Site remains relatively flat with a perimeter retaining wall
- Entry plaza with bistro chairs and tables
- Picnic area
- Water play channel with pump
- Large climber for wide range of ages

STACK



- Featured hill supported by stone boulders
- Entry plaza with benches
- Stone amphitheater for casual and event seating
- Splash pad with sprayers/fountains

SITE DESIGN IDEAS

STRATA



STREAM



STACK



LISTENING + DISCUSSION



LISTENING + DISCUSSION

- **What do you spend the most time doing in this park?
Sitting, playing on equipment, playing on the lawn,
etc.?**
- **What would you like to do in the park that you currently
cannot do?**
- **How much seating should we have in the park?
Benches, chairs, picnic tables, etc.?**
- **What types of gatherings do you imagine taking place
in the park?**

SITE DESIGN IDEAS

STRATA



STREAM



STACK





THANK YOU!

Next Community Meeting TBA

We want to hear from you!
Complete the community survey on the project website:
www.boston.gov/st-james-street

For questions, maintenance requests, or concerns regarding any of our parks, contact 311.



May 20, 2026
Boston Parks and Recreation

