



Improvements to

WEBSTER AVENUE PLAYGROUND

Community Meeting #1

Site Analysis

MEETING RECORDING



The Boston Parks and Recreation Department will be recording the meeting and posting to our project webpage for those who are unable to attend the Zoom meeting live.

It is possible that participants may also be recording the meeting with their phones cameras or other devices. If you do not wish to be recorded during this meeting, please keep your microphone muted and camera off.

*Please share with your neighbors and friends,
boston.gov/webster-ave-playground*

VIRTUAL MEETING ETIQUETTE

We want to ensure this conversation is a pleasant experience for all and that all community members/stakeholders are comfortable sharing their comments, questions and feedback.

Please be respectful and mindful of each other's time when asking questions/ providing comments, so that all attendees are able to participate in the meeting.

Keep questions/ comments project-specific and not personal to yield solution-driven discussion.

Please wait until all attendees have had the opportunity to ask a question/ provide a comment before providing additional questions/ comments.

*You can always set up a conversation with **Kenya Thompson**, kenya.thompson2@boston.gov, to further discuss the project or process.*

ZOOM TIPS

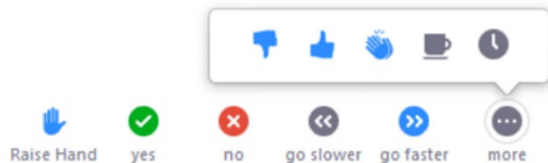
Here is how you can participate during the question and answer part of the presentation.

DURING THE PRESENTATION:



VIA WEB:

Turn video on / off.



To use these non-verbal options click on participants (bottom of screen); these options will pop up in side bar.

DURING THE Q&A:



JOINING VIA PHONE?

Use *9 to raise hand to ask for audio / video permission to ask questions or provide comments.



VIA WEB:

Chat to ask questions / comments or provide responses to poll questions



Raise hand to ask for audio / video permission to ask questions or provide comments.

AGENDA

1

PROJECT TEAM INTRODUCTION

2

PROJECT OVERVIEW

3

PRESENTATION

4

LISTENING AND DISCUSSION

5

CLOSING REMARKS & NEXT STEPS

Improvements to
Webster Avenue Playground
Community Meeting #1
Site Analysis

PROJECT TEAM

Kenya Thompson

Project Manager

kenya.thompson2@boston.gov or 617-961-3098

My'Kel McMillen

Outreach Coordinator, External Affairs

corey.mcmillen@boston.gov or 617-365-3485

Maria Perez

North End Liaison

Office of Neighborhood Services

maria.perez@boston.gov or 617-365-3485

Kyle Zick

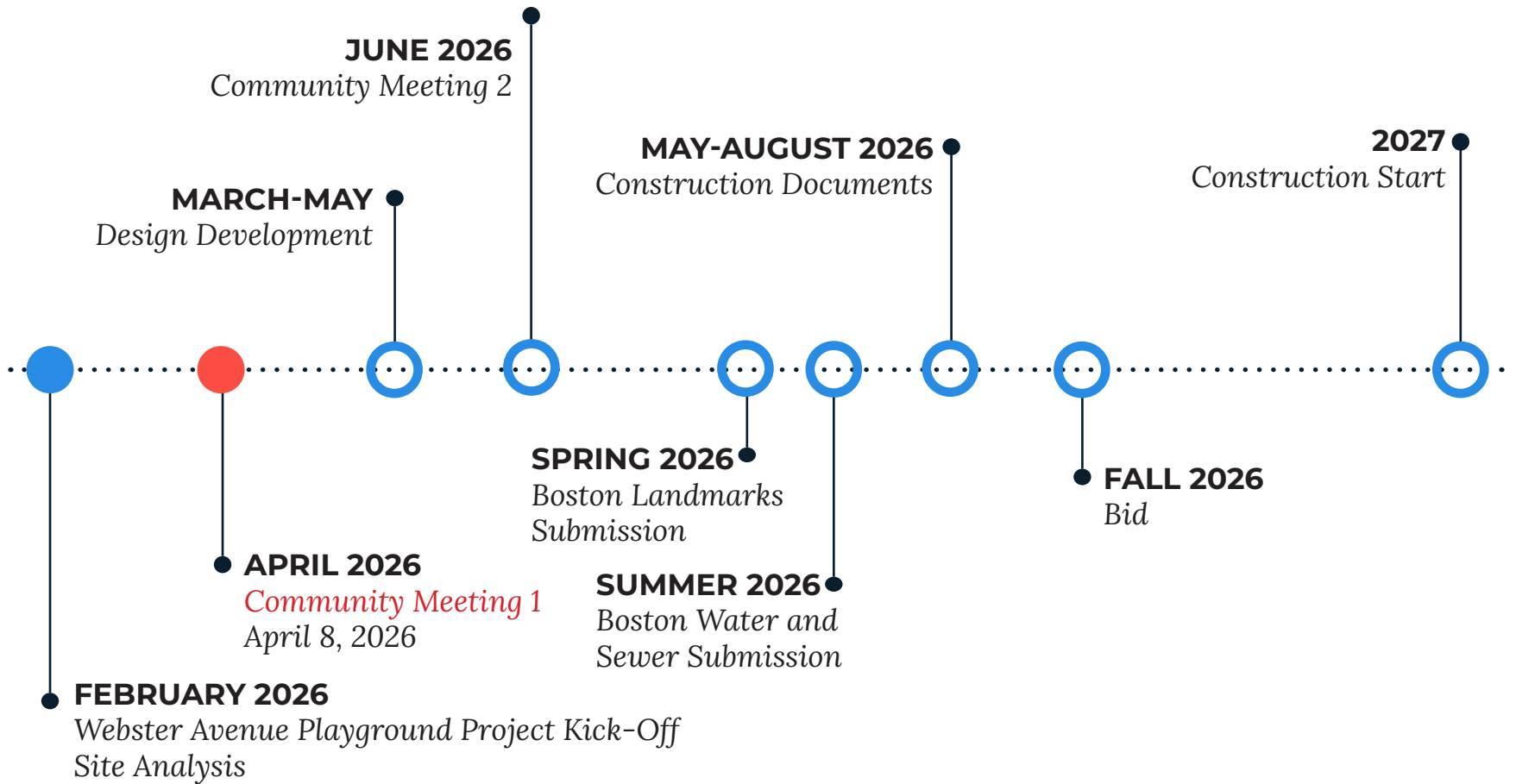
Principal, Kyle Zick Landscape Architecture, Inc.

Yongjae Lee

Associate, Kyle Zick Landscape Architecture, Inc.



PROJECT SCHEDULE & FUNDING



Improvements to
Webster Avenue Playground
Community Meeting #1
Site Analysis



City of Boston
Priorities

Safety Guidelines+
Regulatory
Guidelines

**PARK
DESIGN**

Parks + Recreation
Goals

Community
Input

CITY OF BOSTON PRIORITIES

A city that is:

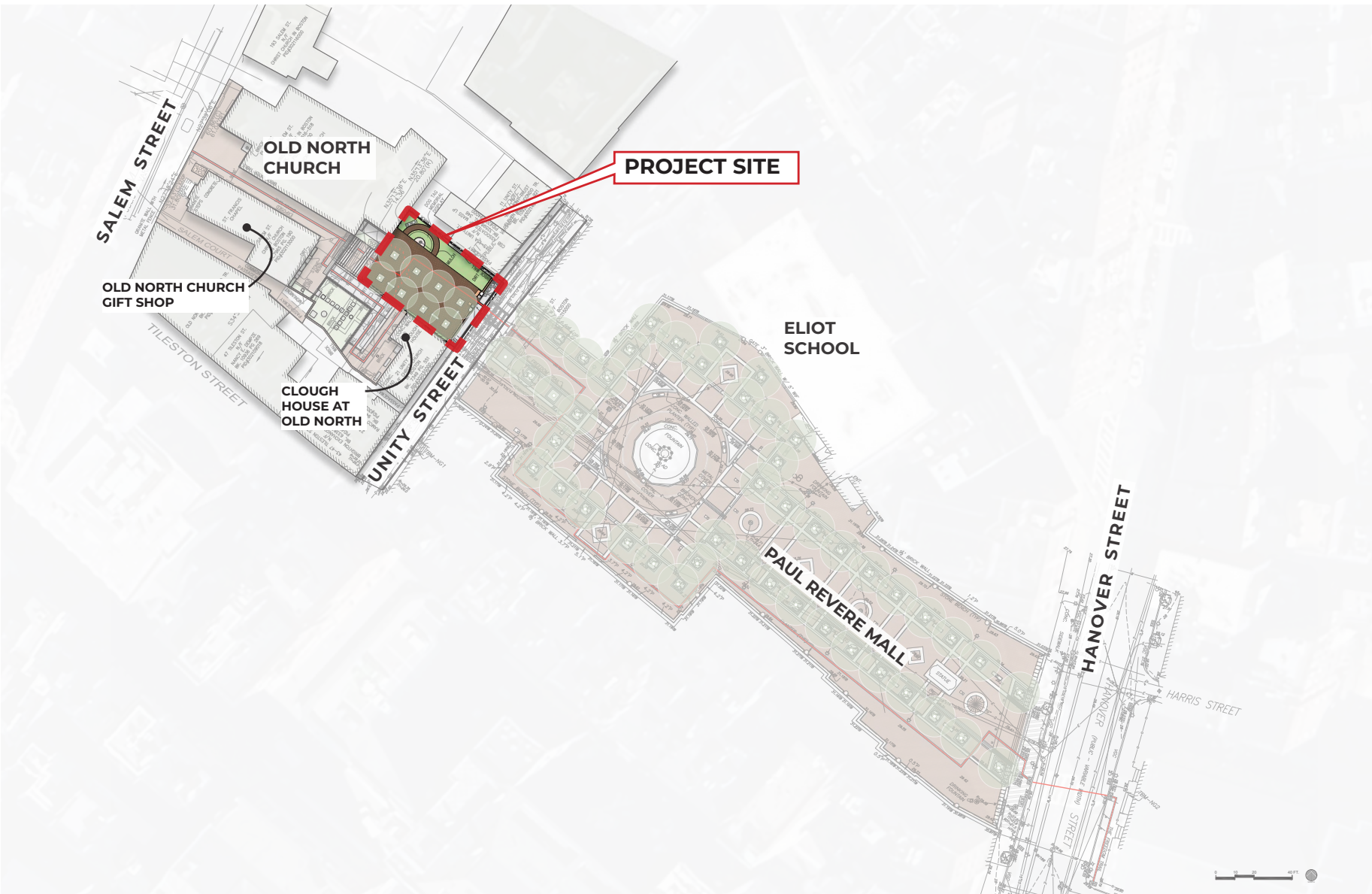
- **Delivering Exceptional Constituent Services**
- **Green and Growing**
- **Family Friendly**
- **Closing the Racial Wealth Gap**
- **Healthy and Safe**



PARK & RECREATION GOALS

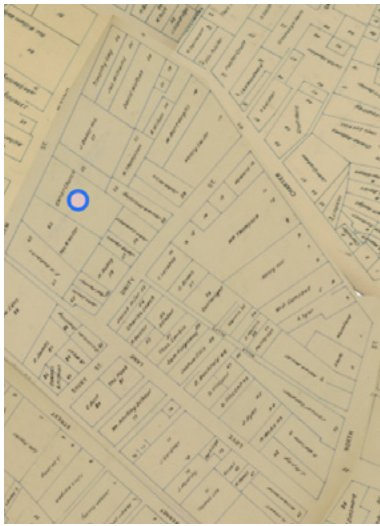
- **Accessible and available to all**
- **Diverse, balanced, and efficient mix of uses**
- **Meaningful and inclusive community engagement**
- **Adaptive and resilient landscapes**
- **Promote connections**



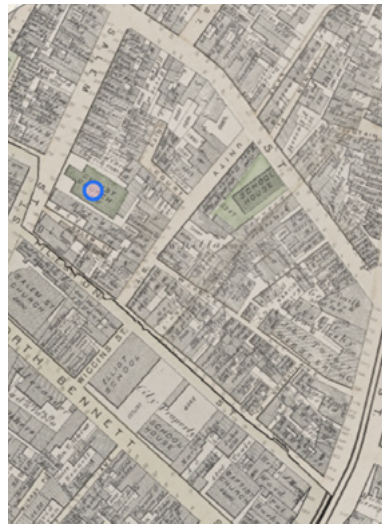


OVERALL SITE CONTEXT PLAN

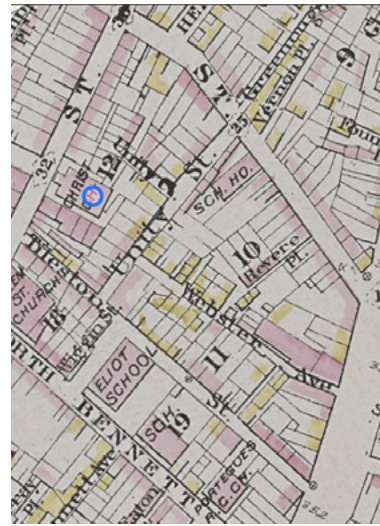
Improvements to
Webster Avenue Playground
Community Meeting #1
Site Analysis



1798



1874



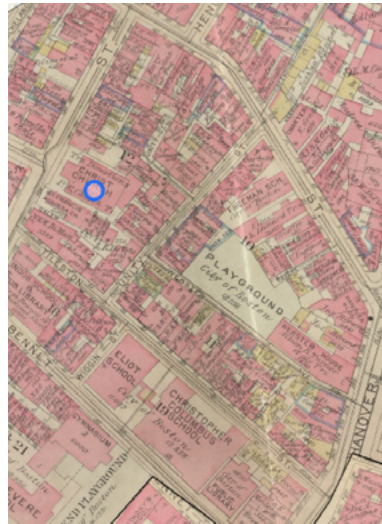
1882



1890



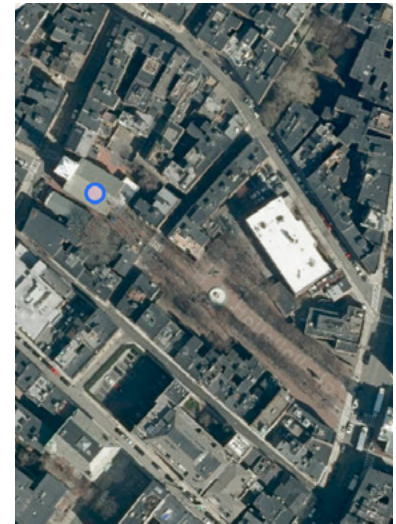
1902



1928



1938



2023

HISTORICAL PLANS OVER TIME

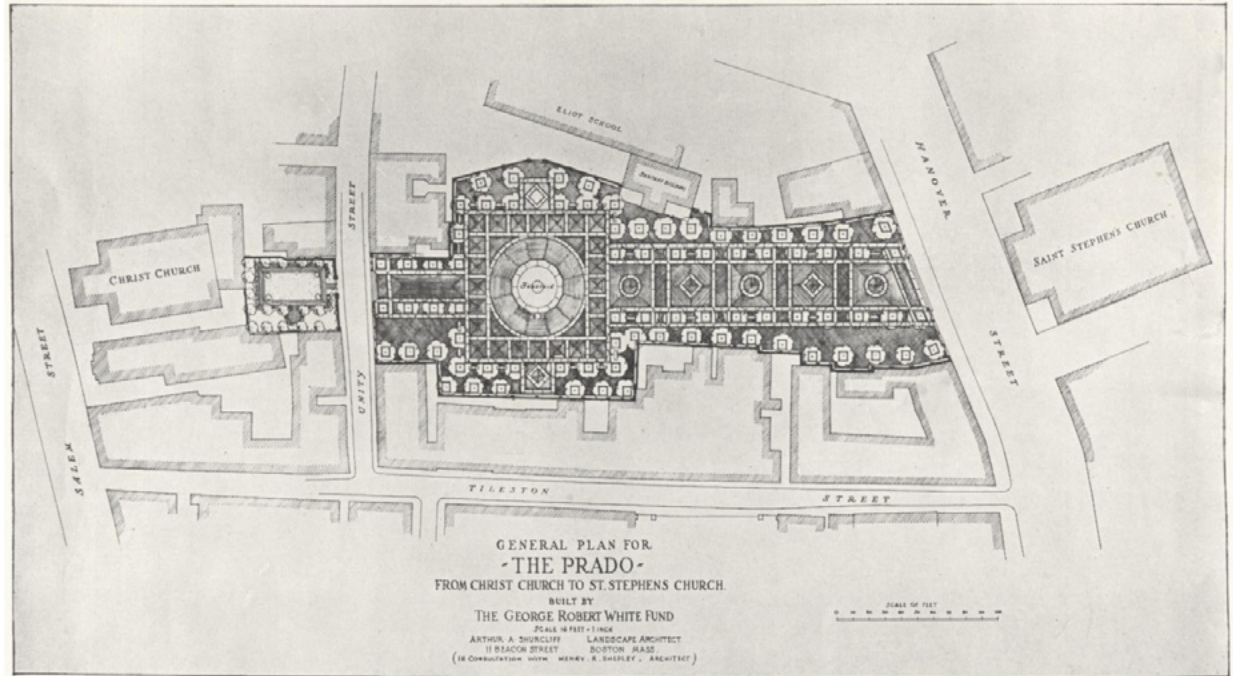
Why is this site called Webster Avenue Playground?

Until Paul Revere Mall was constructed Webster Avenue connected Hanover Street to Unity Street

Improvements to
Webster Avenue Playground
Community Meeting #1
Site Analysis



Historical Photo (1935)



Historical Plan (1935)



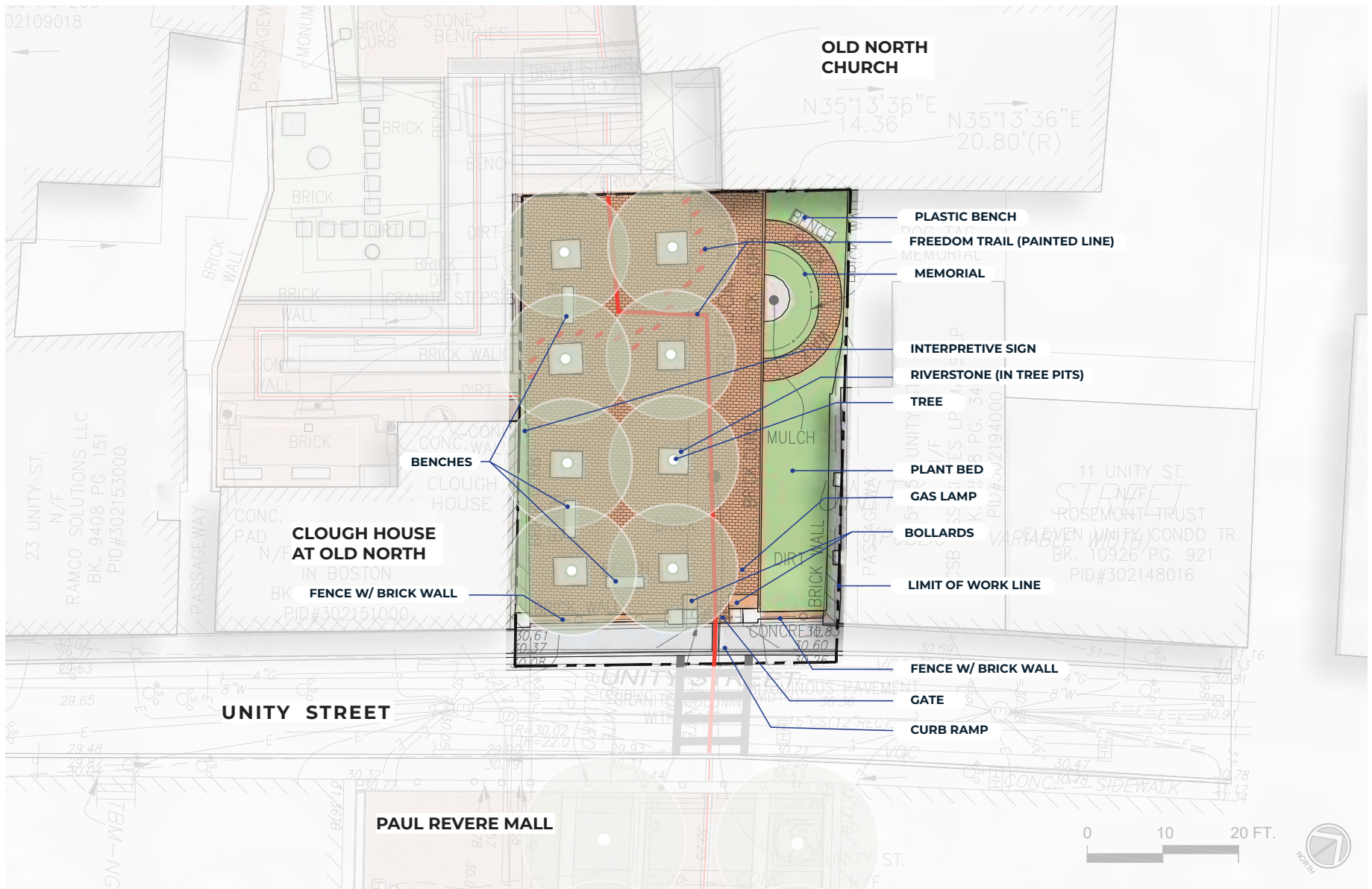
Historical Photo (1935)



Bigelow Courtyard Historical Photo (1950-1960)

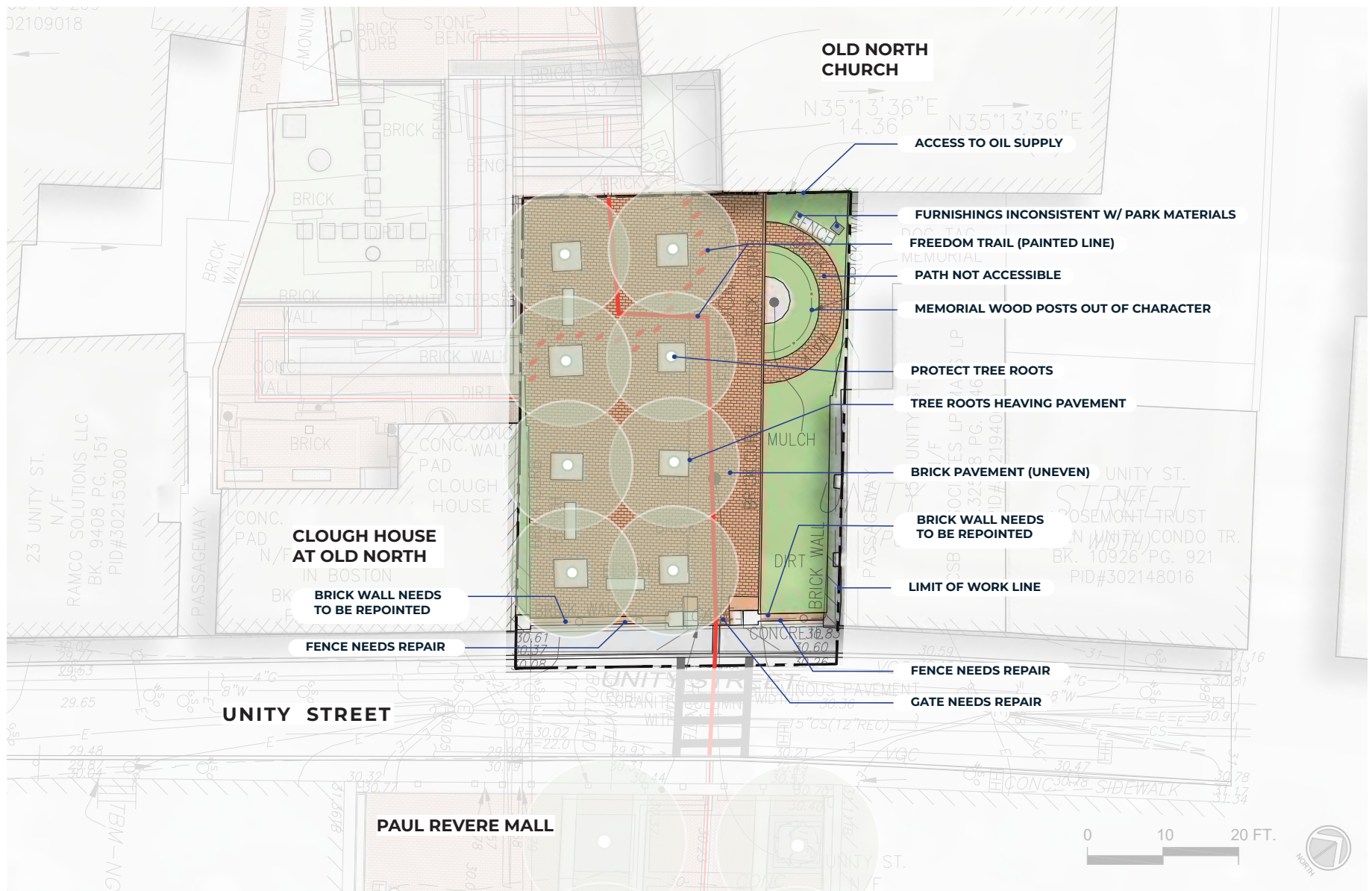
HISTORICAL PLAN & PHOTOS

Improvements to
Webster Avenue Playground
Community Meeting #1
Site Analysis



SITE INVENTORY PLAN

Improvements to
Webster Avenue Playground
Community Meeting #1
Site Analysis



SITE ANALYSIS PLAN

Improvements to
 Webster Avenue Playground
 Community Meeting #1
 Site Analysis



EXISTING SITE - 3D SIMULATION

Improvements to
Webster Avenue Playground
Community Meeting #1
Site Analysis



EXISTING SITE - 3D SIMULATION

Improvements to
Webster Avenue Playground
Community Meeting #1
Site Analysis



EXISTING SITE - 3D SIMULATION

Improvements to
Webster Avenue Playground
Community Meeting #1
Site Analysis



EXISTING WALL AND FENCE

Improvements to
Webster Avenue Playground
Community Meeting #1
Site Analysis



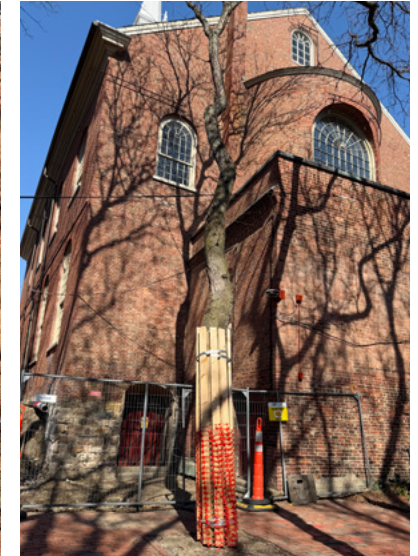
EXISTING PAVEMENT CONDITION

Improvements to
Webster Avenue Playground
Community Meeting #1
Site Analysis



EXISTING MEMORIAL

Improvements to
Webster Avenue Playground
Community Meeting #1
Site Analysis



EXISTING TREE CONDITION

Improvements to
Webster Avenue Playground
Community Meeting #1
Site Analysis



Gas Light Fixture



Recycled Plastic Bench



Concrete Bench



Stone Bollard



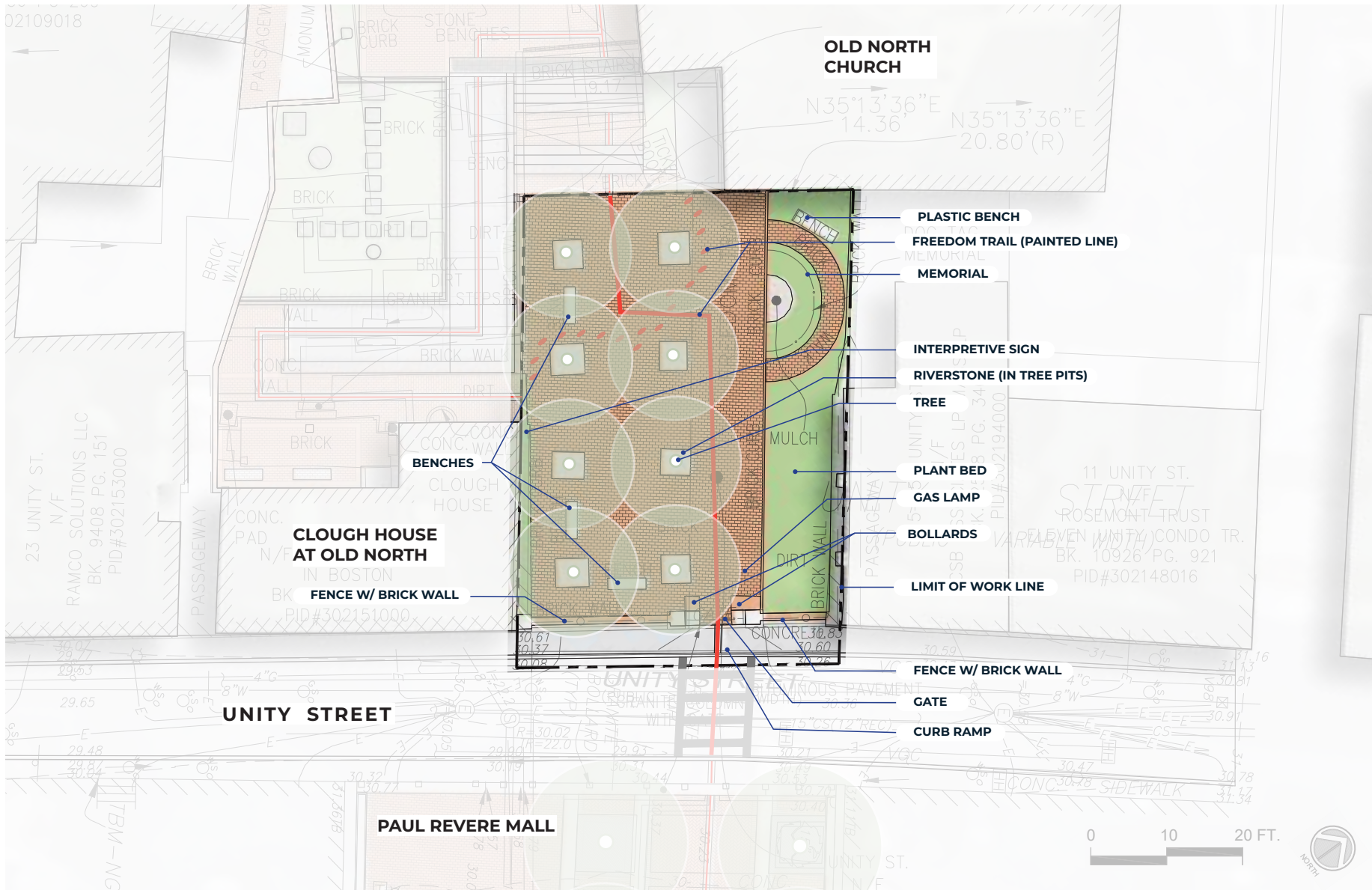
Interpretive Signage



Paul Revere Mall - Paving & Site Elements

EXISTING SITE ELEMENTS

Improvements to
Webster Avenue Playground
Community Meeting #1
Site Analysis



SITE INVENTORY PLAN

Improvements to
 Webster Avenue Playground
 Community Meeting #1
 Site Analysis



QUESTIONS FOR THE COMMUNITY

- How long do you typically stay when visiting, and would more seating encourage you to stay longer?
- What improvements would make the plaza feel more safe and more accessible for you or others?



THANK YOU!

See the project website for future updates.

Meeting #2 - June

Project page: boston.gov/webster-ave-playground

BOS:
311

For questions, maintenance requests or concerns regarding any of our parks contact 311



April 8, 2026
Boston Parks and Recreation

