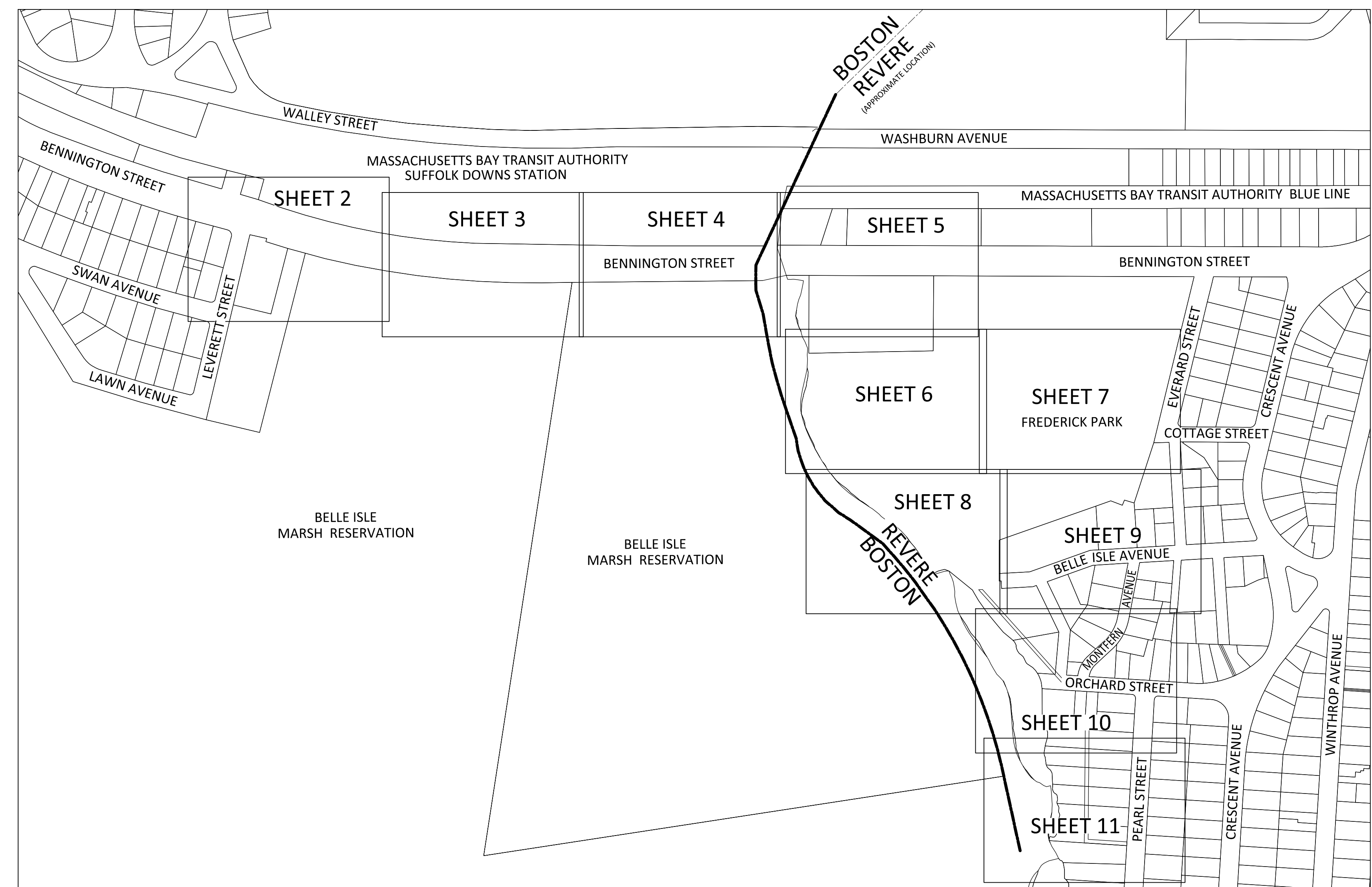
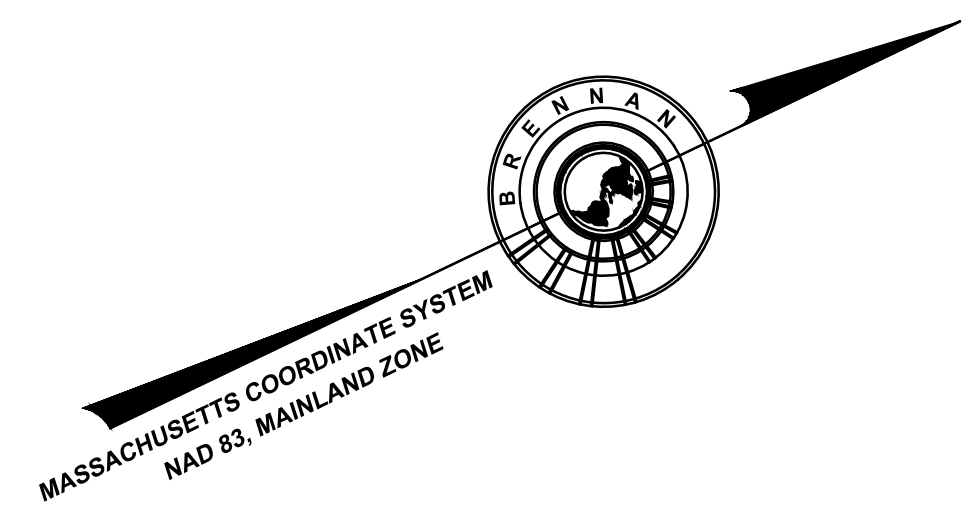




APPENDIX A: TOPOGRAPHIC SURVEY

KEY SHEET AND LOCUS MAP



REFERENCES

- SUFFOLK COUNTY REGISTRY OF DEEDS
 BOOK 3300 PAGE 6
 PLAN BOOK 1291 END
 PLAN BOOK 1743 END
 PLAN BOOK 1826 END
 PLAN BOOK 1864 PAGE 134
 PLAN BOOK 3248 END
 PLAN BOOK 3300 PAGE 6
 PLAN BOOK 4425 PAGE 16
 PLAN BOOK 6000 PAGE 221
 PLAN BOOK 6944 PAGE 29
 PLAN BOOK 7215 PAGE 567
 PLAN BOOK 7571 PAGE 557
 PLAN BOOK 8024 PAGE 109
 PLAN BOOK 8827 PAGE 649
 PLAN BOOK 8874 PAGE 134
 PLAN BOOK 9025 PAGE 130
 PLAN BOOK 14255 PAGE 187
 PLAN BOOK 28477 PAGE 287
 PLAN NO. 1092 OF 2005
 PLAN NO. 237 OF 2007
 PLAN NO. 830 OF 2007
 PLAN NO. 478 OF 2008
 PLAN NO. 178 OF 2021
- MASSACHUSETTS LAND COURT
 LCC #15259A, B, C, I & K1
 LCC #18991A
 LCC #19899A & B
 LCC #21341A
 LCC #21342A
 LCC #27136A, B & C-1
 LCC #36631A
 LCC #37403A
 CERTIFICATE OF TITLE 82757
 CERTIFICATE OF TITLE 91351
- CITY OF BOSTON ENGINEERING DEPARTMENT
 FIELD BOOK 794 PAGE 128
 PLAN NO. A1146 LEVERETT AVENUE
 PLAN NO. L-2081/2082 BENNINGTON STREET
 PLAN NO. L-3140/3141 BENNINGTON STREET
 PLAN NO. L-11540 BENNINGTON STREET
- CITY OF RVERE ENGINEERING DEPARTMENT
 BLOCK 22, PLAN OF LAND EVERARD STREET 245 THRU 255
 BLOCK 23, SUBDIVISION OF LAND BENNINGTON STREET
 SP 109, PEARL AVE, ORCHARD ST, WEBSTER ST, SUMMER ST, 1909_1
- MASSACHUSETTS DEPARTMENT OF TRANSPORTATION
 STATE HIGHWAY LAYOUT NO. 279
 STATE HIGHWAY LAYOUT NO. 2986

LEGEND

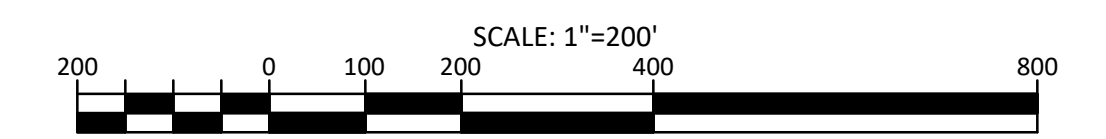
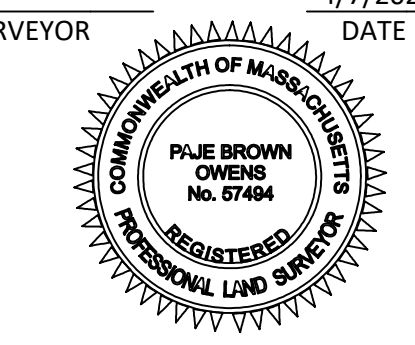
- | | | |
|--|--|---|
| <ul style="list-style-type: none"> ⊙ SEWER MANHOLE ⊕ DRAIN MANHOLE ⊖ ELECTRIC MANHOLE ⊗ WATER MANHOLE ⊘ TELEPHONE MANHOLE ⊙ MBTA MANHOLE ⊙ MANHOLE ⊙ HYDRANT ⊙ WATER SHUT OFF/WATER GATE ⊙ GAS SHUT OFF/GAS GATE ⊙ BOSTON WATER VALVE ⊙ CATCH BASIN ⊙ ROUND CATCH BASIN ⊙ GUY WIRE ⊙ TRAFFIC CONTROL BOX ⊙ TRAFFIC SIGNAL ⊙ UTILITY POLE ⊙ LIGHT POLE ⊙ ELECTRIC HANDHOLE ⊙ BOLLARD ⊙ POST ⊙ MAIL BOX ⊙ SIGN ⊙ AREA DRAIN ⊙ CLEAN OUT ⊙ MAGNAIL ⊙ DRILL HOLE ⊙ BOUND ⊙ IRON SURVEY MARKER ⊙ OBSERVATION WELL ⊙ WETLANDS ⊙ UTILITY POLE W/ LIGHT ⊙ TRANSFORMER ⊙ GAS METER ⊙ ELECTRIC METER ⊙ RESOURCES AUTHORITY ⊙ DECIDUOUS TREE ⊙ CONIFEROUS TREE ⊙ HANDICAP RAMP | <ul style="list-style-type: none"> • GP GATE POST ⊙ IRRIGATION CONTROL VALVE ⊙ CURB RETURN ⊙ JERSEY BARRIER ⊙ INDICATES COMMON OWNERSHIP BC BOTTOM OF CURB BCB BIT, CONC. BERM BIT BITUMINOUS BK BACK BW BOTTOM OF WALL BWSC BOSTON WATER AND SEWER COMMISSION (C) CALCULATED CB CONCRETE BOUND CC CONCRETE CURB CHB CHORD BEARING CHD CHORD DISTANCE CLF CHAIN LINK FENCE CONC CONCRETE Δ DELTA ANGLE D DISTURBED DBYL DOUBLE YELLOW LINE DH DRILL HOLE DWL DASHED WHITE LINE FD FOUND FGC FLUSH GRANITE CURB FW FULL OF WATER I INVERT ELEVATION INACC INACCESSIBLE IP IRON PIPE IR IRON ROD L ARC LENGTH LCC LAND COURT CASE LST LANDSCAPE TIMBER M&S MULCH & SHRUBS MWRA MASSACHUSETTS WATER RESOURCES AUTHORITY NF NOT FOUND NVP NO VISIBLE PIPES R RADIUS OR RIM ELEVATION (R) RECORD (REC) RECORD | <ul style="list-style-type: none"> RET RETAINING SB STONE BOUND SGC SLOPED GRANITE CURB SGR STEEL GUARD RAIL STF STOCKADE FENCE TBM TEMPORARY BENCH MARK TC TOP OF CURB TOD TOP OF DEBRIS TOW TOP OF WATER TR= CENTERLINE OF TROUGH TT= TOP OF TRAP TW TOP OF WALL TYP TYPICAL VCC VERTICAL GRANITE CURB WF WOOD FENCE WIF WROUGHT IRON FENCE WGR WOODEN GUARD RAIL C CABLE TELEVISION D DRAIN E ELECTRIC G GAS G(ABD) GAS-ABANDONED SL STREET LIGHTING OHW OVERHEAD WIRES S(FM) SEWER-FORCE MAIN T TELEPHONE W WATER W(ABD) WATER-ABANDONED 12"D(CI) PIPE SIZE AND MATERIAL CI CAST IRON CPP CORRUGATED PLASTIC PIPE DI DUCTILE IRON PVC POLYVINYL CHLORIDE RCP REINFORCED CONCRETE PIPE VCP VITRIFIED CLAY PIPE X METAL FENCE W WOOD FENCE WIF WROUGHT IRON FENCE EW EDGE OF WOODS WG WOODEN GUARD RAIL DSC STEEL GUARD RAIL DCS DIGSAFE CABLE DSE DIGSAFE ELECTRIC DSG DIGSAFE GAS DST DIGSAFE TELEPHONE DSW DIGSAFE WATER |
|--|--|---|

NOTES:

- 1) BENCH MARK INFORMATION:
 TEMPORARY BENCH MARKS SET:
 TBM-BREN1: CHISEL SQUARE ON TOP OF CONCRETE WINDOW WELL WITH GRATE AT THE REAR OF THE BEACHMONT SCHOOL. ELEVATION= 11.44'
 TBM-BREN2: BENCHTIE SET 1' UP IN UTILITY POLE #6, AS SHOWN HEREON. ELEVATION= 7.30'
 TBM-BREN3: BENCHTIE SET 1' UP IN UTILITY POLE #1335/3, AS SHOWN HEREON. ELEVATION= 9.31'
 TBM-BREN4: BENCHTIE SET 1' UP IN UTILITY POLE, AS SHOWN HEREON. ELEVATION= 10.14'
 TBM-BREN5: BENCHTIE SET 1' UP ON UTILITY POLE #81, AS SHOWN HEREON. ELEVATION= 10.99'
 TBM-BREN6: BENCHTIE SET 1' UP ON UTILITY POLE #2050, AS SHOWN HEREON. ELEVATION= 10.66'
 TBM-BREN7: X-CUT SET ON BOLT OVER MAIN OUTLET OF HYDRANT ON PEARL AVENUE OPPOSITE HOUSE #192, AS SHOWN HEREON. ELEVATION= 42.36'
- 2) THE VERTICAL DATUM IS BASED ON THE NORTH AMERICAN VERTICAL DATUM OF 1988 (NAVD88), AND WAS DERIVED FROM GPS ELEVATIONS.
- 3) THE HORIZONTAL DATUM IS BASED ON THE MASSACHUSETTS COORDINATE SYSTEM, NAD83 MAINLAND ZONE, AND WAS DERIVED FROM GPS OBSERVATIONS.
- 4) CONTOUR INTERVAL EQUALS ONE (1) FOOT.
- 5) THE INITIAL TOPOGRAPHY, SURFACE-IMPROVEMENTS AND SITE DETAIL DEPICTED HEREON WAS OBTAINED FROM AN ON-THE GROUND SURVEY CONDUCTED BY BRENNAN CONSULTING, INC. BETWEEN DECEMBER 4-27, 2023, JANUARY 16-18, 2024, FEBRUARY 5-12, 2024 AND ADDITIONAL SURVEY BETWEEN JANUARY 13-15, 2025 AND FEBRUARY 3, 2025.
- 6) BY GRAPHIC PLOTTING ONLY, THE PARCELS SHOWN HEREON LIE WITHIN A ZONE "X" (UNSHADED), AN AREA OUTSIDE OF THE 0.2% ANNUAL CHANCE FLOOD, AND ZONE AE (SHADED), AREAS WHERE BASE FLOOD ELEVATIONS HAVE BEEN DETERMINED, AS SHOWN ON THE FEDERAL EMERGENCY MANAGEMENT AGENCY (E.E.M.A.) FLOOD INSURANCE RATE MAP (F.I.R.M.) FOR SUFFOLK COUNTY, MASSACHUSETTS, MAP NUMBER 2502SC00383, CITY OF BOSTON COMMUNITY NUMBER 250286, PANEL NUMBER 00381, AND CITY OF REVERE COMMUNITY NUMBER 250288, PANEL NUMBER 00381, HAVING AN EFFECTIVE DATE OF MARCH 16, 2016. THE INFORMATION WAS DOWNLOADED FROM: [HTTPS://MAPS.MASS.GOV/MASSMAPPER/MASSMAPPER.HTML](https://maps.mass.gov/massmapper/massmapper.html)
- 7) NO RECORD WATER INFORMATION WAS AVAILABLE FOR THE INTERSECTION OF MONTEFERN AVENUE AND ORCHARD STREET AND AT THE SOUTHERN PORTION OF BELLE ISLE AVENUE AT THE TIME OF SURVEY.
- 8) COMCAST INFORMATION THAT WAS RECEIVED WAS SCHEMATIC IN NATURE AND COULD NOT BE PLOTTED.
- 9) NATIONAL GRID ELECTRIC INFORMATION PROVIDED FOR THE CITY OF REVERE THAT WAS RECEIVED WAS SCHEMATIC IN NATURE AND COULD NOT BE PLOTTED.
- 10) THIS SURVEY WAS DONE WITHOUT THE BENEFIT OF A TITLE REPORT.
- 11) THE DISPOSITION OF THE SOUTHEASTERN PORTION OF BELLE ISLE AVENUE IS UNKNOWN, IT IS SHOWN ON LAND COURT CASE 36631A AS BEING PRIVATE FROM THE INTERSECTION OF MONTEFERN AVENUE HEADING SOUTHEAST BUT IS REPORTED AS BEING PUBLIC BY CITY OF REVERE ENGINEERING.
- 12) UTILITY INFORMATION SHOWN IS BASED ON BOTH A FIELD SURVEY AND PLANS OF RECORD. THE LOCATIONS OF UNDERGROUND PIPES AND CONDUITS HAVE BEEN DETERMINED FROM THE AFOREMENTIONED RECORD PLANS AND ARE APPROXIMATE ONLY. BRENNAN CONSULTING CANNOT ASSUME RESPONSIBILITY FOR DAMAGES INCURRED AS A RESULT OF UTILITIES THAT ARE OMITTED OR INACCURATELY SHOWN ON SAID RECORD PLANS, SINCE SUBSURFACE UTILITIES CANNOT BE VISIBLY VERIFIED. BEFORE PLANNING FUTURE CONNECTIONS, THE PROPER UTILITY ENGINEERING DEPARTMENT SHOULD BE CONSULTED AND THE ACTUAL LOCATION OF SUBSURFACE STRUCTURES SHOULD BE DETERMINED IN THE FIELD. CALL, TOLL FREE, THE DIG SAFE CALL CENTER AT 1-888-344-7233 SEVENTY-TWO HOURS PRIOR TO EXCAVATION.
- 13) THIS DOCUMENT IS AN INSTRUMENT OF SERVICE OF BRENNAN CONSULTING AND ISSUED TO OUR CLIENT FOR PURPOSES RELATED DIRECTLY AND SOLELY TO BRENNAN CONSULTING OUR SCOPE OF SERVICES UNDER CONTRACT TO OUR CLIENT FOR THIS PROJECT. ANY USE OR REUSE OF THIS DOCUMENT FOR ANY REASON BY ANY PARTY FOR PURPOSES UNRELATED DIRECTLY AND SOLELY TO SAID CONTRACT SHALL BE AT THE USER'S SOLE AND EXCLUSIVE RISK AND LIABILITY, INCLUDING LIABILITY FOR VIOLATION OF COPYRIGHT LAWS, UNLESS WRITTEN CONSENT IS PROVIDED BY BRENNAN CONSULTING.

I HEREBY CERTIFY THAT THIS PLAN IS BASED ON AN ACTUAL FIELD SURVEY AND THE LATEST DEEDS AND PLANS OF RECORD.

[Signature]
 PROFESSIONAL LAND SURVEYOR
 DATE: 4/7/2025



REVISIONS				
NO.	DATE	DESCRIPTION	BY	CHK'D
1	2/7/25	UPDATED KEY SHEET, ADDED ADDITIONAL TOPO SHEETS 8-10, UPDATED SURFACE AND ADDED SHEET 11	MN	PBO

EXISTING CONDITIONS SURVEY
BENNINGTON STREET & FREDERICKS PARK
BOSTON & REVERE, MASSACHUSETTS
(SUFFOLK COUNTY)

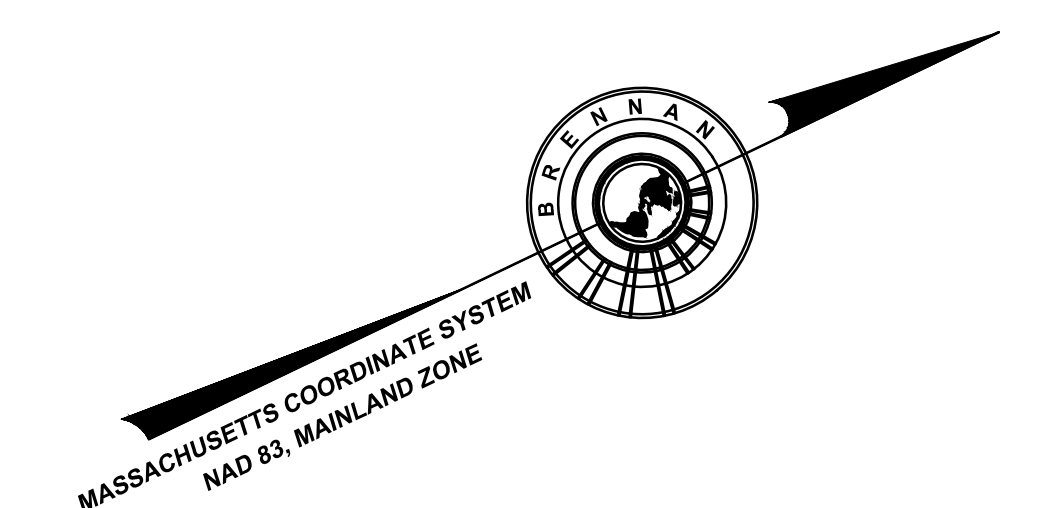
PREPARED FOR
VHB

SCALE: 1" = 200' DATE: MARCH 4, 2024

Brennan Consulting
 ENGINEERING TRANSPORTATION SURVEYING
 24 RAY AVENUE, BURLINGTON, MA
 PHONE: (781) 273-3434 WWW.BRENNANCONSULTS.COM

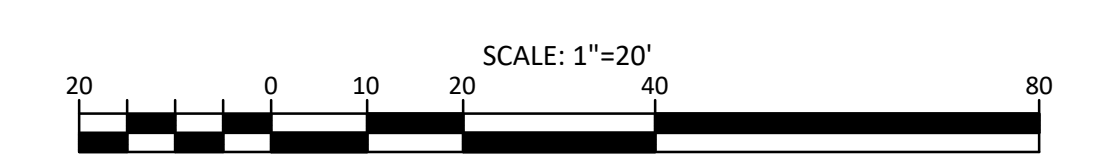
FIELD CHIEF: IL/ST	APPROVED: PBO	PM: PBO	SHEET NO. 1 OF 11
RESEARCH: MN	COMP: MN	CADD: MN	JOB NO. 23396

P:\23396-1\Brennington St - Ph. 262 - Revere - Vhb (Survey) (Vhb) Submitted to Client\2025-03-07-Final\23396-1-2025-03-07-Final.dwg



LEGEND

- ⊙ SEWER MANHOLE
- ⊕ DRAIN MANHOLE
- ⊖ ELECTRIC MANHOLE
- ⊗ WATER MANHOLE
- ⊘ TELEPHONE MANHOLE
- ⊙ MBTA MANHOLE
- ⊙ MANHOLE
- ⊙ HYDRANT
- ⊙ WATER SHUT OFF/WATER GATE
- ⊙ GAS SHUT OFF/GAS GATE
- ⊙ BOSTON WATER VALVE
- ⊙ CATCH BASIN
- ⊙ ROUND CATCH BASIN
- ⊙ GUY WIRE
- ⊙ TRAFFIC CONTROL BOX
- ⊙ TRAFFIC SIGNAL
- ⊙ UTILITY POLE
- ⊙ LIGHT POLE
- ⊙ ELECTRIC HANDHOLE
- ⊙ BOLLARD
- ⊙ POST
- ⊙ MAIL BOX
- ⊙ SIGN
- ⊙ AREA DRAIN
- ⊙ CLEAN OUT
- ⊙ MAGNAIL
- ⊙ DRILL HOLE
- ⊙ BOUND
- ⊙ IRON SURVEY MARKER
- ⊙ OBSERVATION WELL
- ⊙ WETLANDS
- ⊙ UTILITY POLE W/ LIGHT
- ⊙ TRANSFORMER
- ⊙ GAS METER
- ⊙ ELECTRIC METER
- ⊙ DECIDUOUS TREE
- ⊙ CONIFEROUS TREE
- ⊙ HANDICAP RAMP
- ⊙ GATE POST
- ⊙ IRRIGATION CONTROL VALVE
- ⊙ CURB RETURN
- ⊙ JERSEY BARRIER
- ⊙ INDICATES COMMON OWNERSHIP
- BC BOTTOM OF CURB
- BCB BIT. CONC. BERM
- BIT BITUMINOUS
- BK BACK
- BW BOTTOM OF WALL
- BWSC BOSTON WATER AND SEWER COMMISSION
- (C) CALCULATED
- CB CONCRETE BOUND
- CC CONCRETE CURB
- CHB CHORD BEARING
- CHD CHORD DISTANCE
- CLF CHAIN LINK FENCE
- CONC CONCRETE
- CRW CONCRETE RETAINING WALL
- Δ DELTA ANGLE
- D DISTURBED
- DBYL DOUBLE YELLOW LINE
- DH DRILL HOLE
- DWL DASHED WHITE LINE
- FD FOUND
- FGC FLUSH GRANITE CURB
- FSW FIELD STONE WALK
- FW FULL OF WATER
- I INVERT ELEVATION
- INACC INACCESSIBLE
- IP IRON PIPE
- IR IRON ROD
- L ARC LENGTH
- LCC LAND COURT CASE
- LST LANDSCAPE TIMBER
- M&S MULCH & SHRUBS
- MWRA MASSACHUSETTS WATER RESOURCES AUTHORITY
- NF NOT FOUND
- NVP NO VISIBLE PIPES
- R RADIUS OR RIM ELEVATION
- (R) RECORD
- (REC) RECORD
- RET RETAINING
- SB STONE BOUND
- SGC SLOPED GRANITE CURB
- SGR STEEL GUARD RAIL
- SRW STONE RETAINING WALL
- STF STOCKADE FENCE
- TBM TEMPORARY BENCH MARK
- TC TOP OF CURB
- TOD TOP OF DEBRIS
- TOW TOP OF WATER
- TR CENTERLINE OF TROUGH
- TT TOP OF TRAP
- TW TOP OF WALL
- TYP TYPICAL
- VGC VERTICAL GRANITE CURB
- WF WOOD FENCE
- WIF WROUGHT IRON FENCE
- WGR WOODEN GUARD RAIL
- ⊙ CABLE TELEVISION
- ⊙ DRAIN
- ⊙ ELECTRIC
- ⊙ GAS
- ⊙ (ABD) GAS-ABANDONED
- ⊙ STREET LIGHTING
- ⊙ OVERHEAD WIRES
- ⊙ SEWER
- ⊙ (FM) SEWER-FORCE MAIN
- ⊙ TELEPHONE
- ⊙ WATER
- ⊙ (ABD) WATER-ABANDONED
- 12"D(CI) PIPE SIZE AND MATERIAL
- CI CAST IRON
- CP CORRUGATED PLASTIC PIPE
- DI DUCTILE IRON
- PVC POLYVINYL CHLORIDE
- RCP REINFORCED CONCRETE PIPE
- VCP VITRIFIED CLAY PIPE
- ⊙ METAL FENCE
- ⊙ WOOD FENCE
- ⊙ WROUGHT IRON FENCE
- ⊙ EDGE OF WOODS
- ⊙ WOODEN GUARD RAIL
- ⊙ STEEL GUARD RAIL
- DSC DIGSAFE CABLE
- DSE DIGSAFE ELECTRIC
- DSG DIGSAFE GAS
- DST DIGSAFE TELEPHONE
- DSW DIGSAFE WATER



SEE NOTES AND REFERENCES ON SHEET 1

**EXISTING CONDITIONS SURVEY
BENNINGTON STREET &
FREDERICKS PARK
BOSTON & REVERE, MASSACHUSETTS
(SUFFOLK COUNTY)**

PREPARED FOR
VHB
SCALE: 1" = 20'
DATE: MARCH 4, 2024



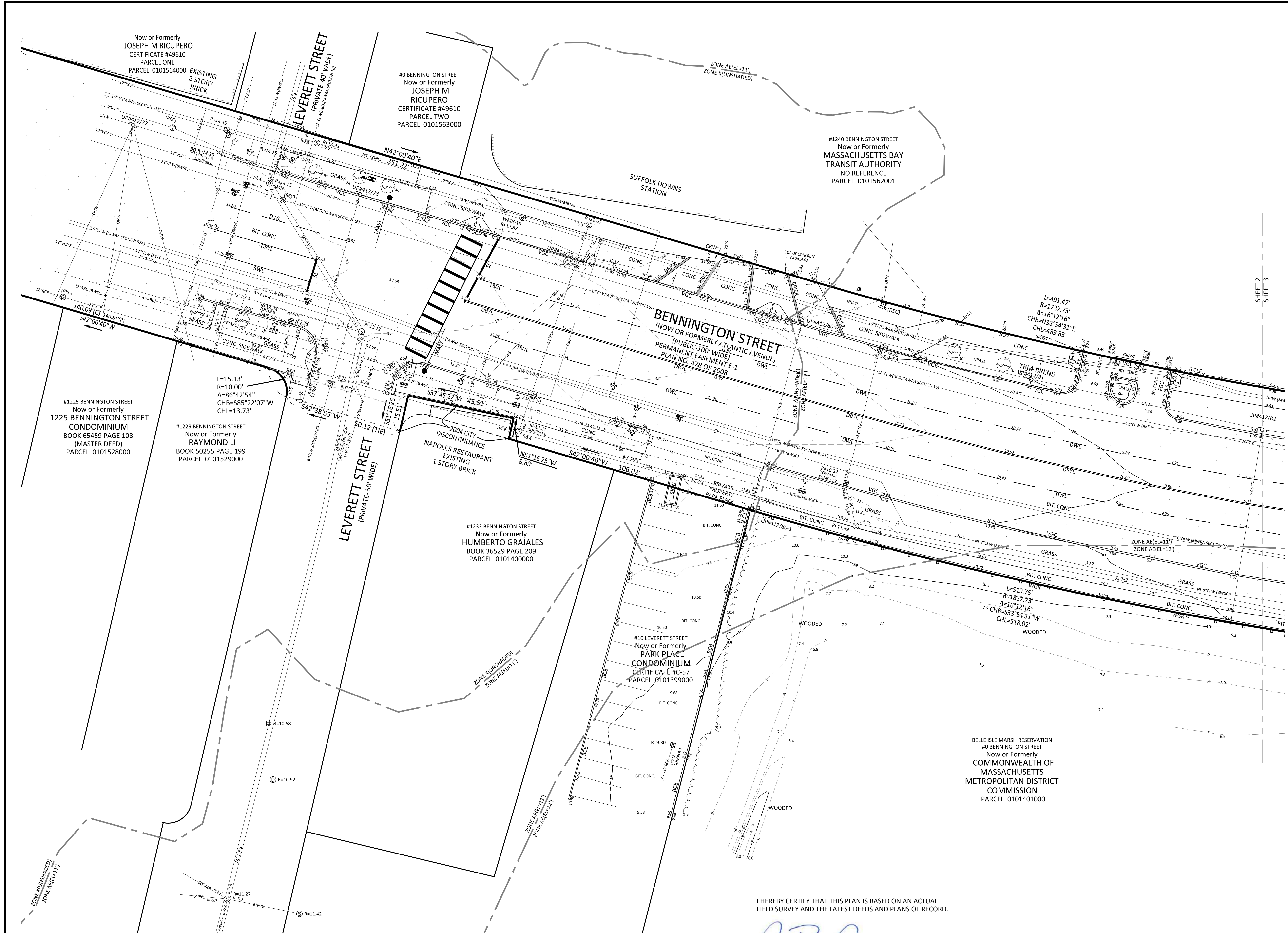
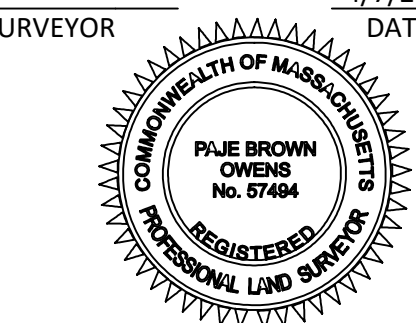
REVISIONS				
NO.	DATE	DESCRIPTION	BY	CHK'D
1	2/7/25	UPDATED KEY SHEET, ADDED ADDITIONAL TOPO SHEETS 8-10, UPDATED SURFACE AND ADDED SHEET 11	MN	PBO

FIELD CHIEF: IL/ST	APPROVED: PBO	PM: PBO	SHEET NO. 2 OF 11
RESEARCH: MN	COMP: MN	CADD: MN	JOB NO. 23396

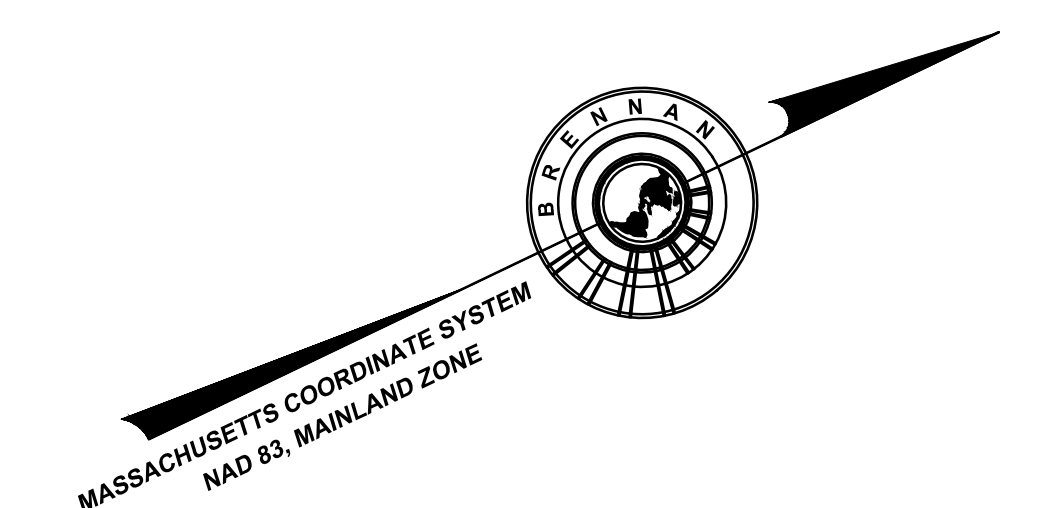
I HEREBY CERTIFY THAT THIS PLAN IS BASED ON AN ACTUAL FIELD SURVEY AND THE LATEST DEEDS AND PLANS OF RECORD.

P. Brown
PROFESSIONAL LAND SURVEYOR

4/7/2025
DATE

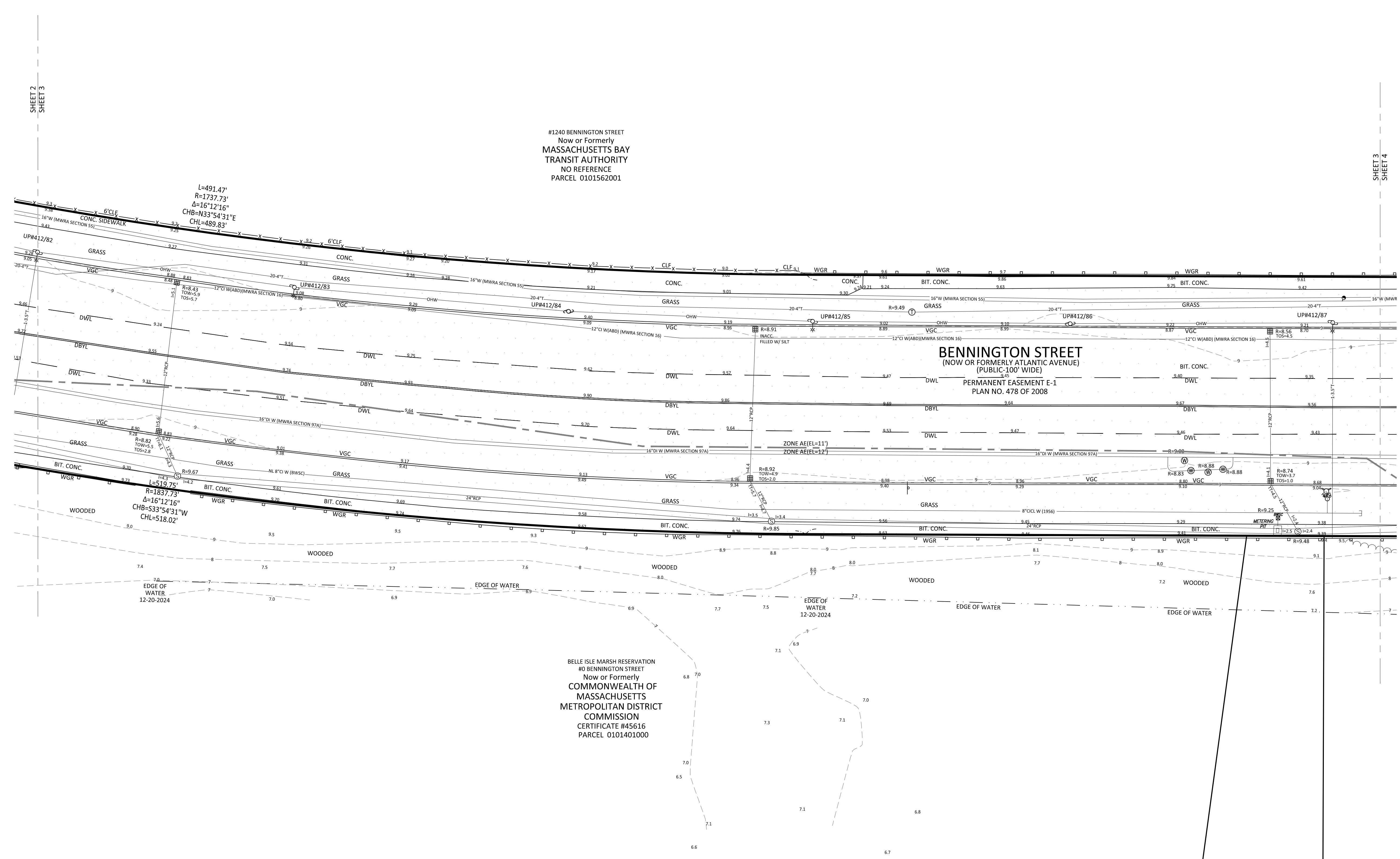


P:\23396-1_Bennington St - Ph 2&3 - Revere_VHB (Survey) (Dwg) Submitted to Client\2025-03-07-Final\2025-03-07-Final.dwg



LEGEND

- ⊙ Sewer Manhole
- ⊕ Drain Manhole
- ⊖ Electric Manhole
- ⊗ Water Manhole
- ⊘ Telephone Manhole
- ⊙ MBTA Manhole
- ⊙ Manhole
- ⊙ Hydrant
- ⊙ Water Shut Off/Water Gate
- ⊙ Gas Shut Off/Gas Gate
- ⊙ Boston Water Valve
- ⊙ Catch Basin
- ⊙ Round Catch Basin
- ⊙ GUY WIRE
- ⊙ Traffic Control Box
- ⊙ Traffic Signal
- ⊙ Utility Pole
- ⊙ Light Pole
- ⊙ Electric Handhole
- ⊙ Bollard
- ⊙ Post
- ⊙ Mail Box
- ⊙ Sign
- ⊙ Area Drain
- ⊙ Clean Out
- ⊙ Manhole
- ⊙ Drill Hole
- ⊙ Bound
- ⊙ Iron Survey Marker
- ⊙ Observation Well
- ⊙ Wetlands
- ⊙ Utility Pole w/ Light
- ⊙ Transformer
- ⊙ Gas Meter
- ⊙ Electric Meter
- ⊙ Deciduous Tree
- ⊙ Coniferous Tree
- ⊙ Handicap Ramp
- ⊙ Gate Post
- ⊙ Irrigation Control Valve
- ⊙ CURB RETURN
- ⊙ Jersey Barrier
- ⊙ Indicates Common Ownership
- BC Bottom of Curb
- BCB Bit. Conc. Berm
- BIT Bituminous
- BK Back
- BW Bottom of Wall
- BWSC Boston Water and Sewer Commission
- (C) Calculated
- CB Concrete Bound
- CC Concrete Curb
- CHB Chord Bearing
- CHD Chord Distance
- CLF Chain Link Fence
- CONC Concrete
- CRW Concrete Retaining Wall
- Δ Delta Angle
- D Disturbed
- DBYL Double Yellow Line
- DH Drill Hole
- DWL Dashed White Line
- FD Found
- FCC Flush Granite Curb
- FSW Field Stone Walk
- FW Full of Water
- I Invert Elevation
- INACC Inaccessible
- IP Iron Pipe
- IR Iron Rod
- L Arc Length
- LCC Land Court Case
- LST Landscape Timber
- M&S Mulch & Shrubs
- MWRA Massachusetts Water Resources Authority
- NF Not Found
- NVP No Visible Pipes
- R Radius or Rim Elevation
- (R) Record
- (REC) Record
- RET Retaining
- SB Stone Bound
- SGC Sloped Granite Curb
- SGR Steel Guard Rail
- SRW Stone Retaining Wall
- STF Stockade Fence
- TBM Temporary Bench Mark
- TC Top of Curb
- TOD Top of Debris
- TOW Top of Water
- TR Centerline of Trough
- TT Top of Trap
- TW Top of Wall
- TYP Typical
- VGC Vertical Granite Curb
- WF Wood Fence
- WIF Wrought Iron Fence
- WGR Wooden Guard Rail
- ⊙ Cable Television
- ⊙ Electric
- ⊙ Gas
- ⊙ Gas-Abandoned
- ⊙ Street Lighting
- ⊙ Overhead Wires
- ⊙ Sewer
- ⊙ Sewer-Force Main
- ⊙ Telephone
- ⊙ Water
- ⊙ Water-Abandoned
- 12" D(CI) Pipe Size and Material
- ⊙ Cast Iron
- ⊙ Corrugated Plastic Pipe
- ⊙ Ductile Iron
- ⊙ Polyvinyl Chloride
- ⊙ Reinforced Concrete Pipe
- ⊙ Vitrified Clay Pipe
- ⊙ Metal Fence
- ⊙ Wood Fence
- ⊙ Wrought Iron Fence
- ⊙ Edge of Woods
- ⊙ Wooden Guard Rail
- ⊙ Steel Guard Rail
- ⊙ DigSAFE Cable
- ⊙ DigSAFE Electric
- ⊙ DigSAFE Gas
- ⊙ DigSAFE Telephone
- ⊙ DigSAFE Water

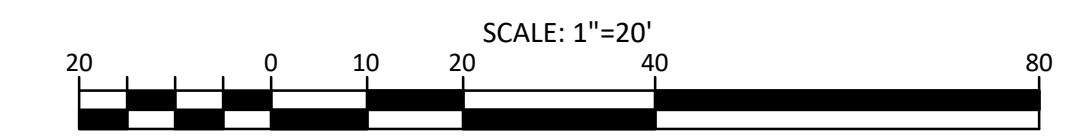
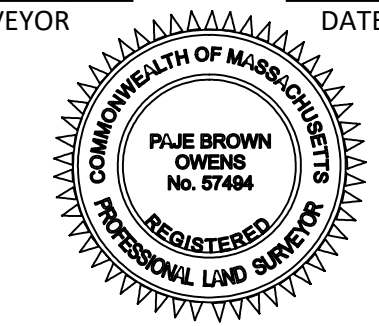


#1240 BENNINGTON STREET
Now or Formerly
MASSACHUSETTS BAY
TRANSIT AUTHORITY
NO REFERENCE
PARCEL 0101562001

BELLE ISLE MARSH RESERVATION
#0 BENNINGTON STREET
Now or Formerly
COMMONWEALTH OF
MASSACHUSETTS
METROPOLITAN DISTRICT
COMMISSION
CERTIFICATE #45616
PARCEL 0101401000

I HEREBY CERTIFY THAT THIS PLAN IS BASED ON AN ACTUAL
FIELD SURVEY AND THE LATEST DEEDS AND PLANS OF RECORD.

[Signature]
PROFESSIONAL LAND SURVEYOR
DATE 4/7/2025



SEE NOTES AND REFERENCES ON SHEET 1

EXISTING CONDITIONS SURVEY
BENNINGTON STREET &
FREDERICKS PARK
BOSTON & REVERE, MASSACHUSETTS
(SUFFOLK COUNTY)

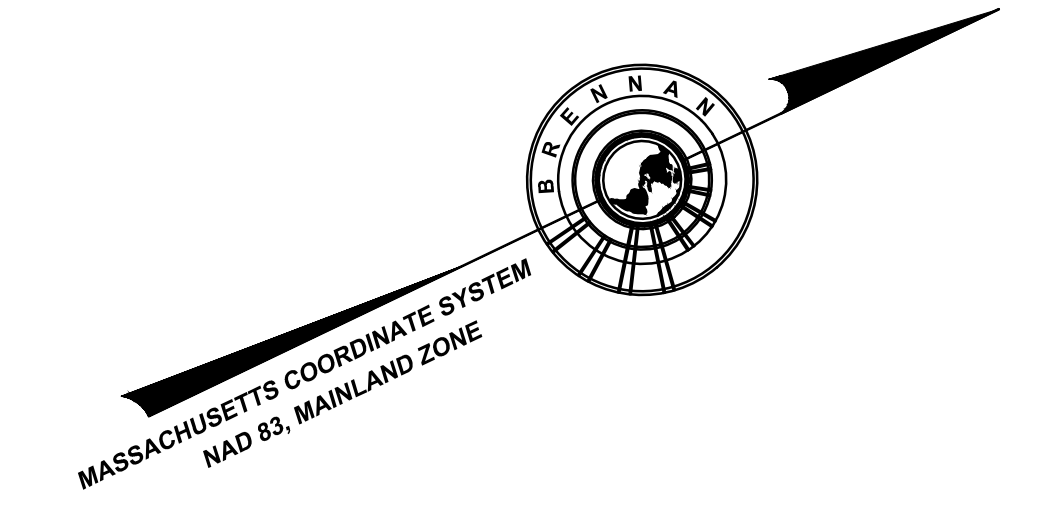
PREPARED FOR
VHB
SCALE: 1" = 20'
DATE: MARCH 4, 2024

Brennan Consulting
ENGINEERING TRANSPORTATION SURVEYING
24 RAY AVENUE, BURLINGTON, MA
PHONE: (781) 273-3434 WWW.BRENNANCONSULTS.COM

REVISIONS				
NO.	DATE	DESCRIPTION	BY	CHK'D
1	2/7/25	UPDATED KEY SHEET , ADDED ADDITIONAL TOPO SHEETS 8-10, UPDATED SURFACE AND ADDED SHEET 11	MN	PBO

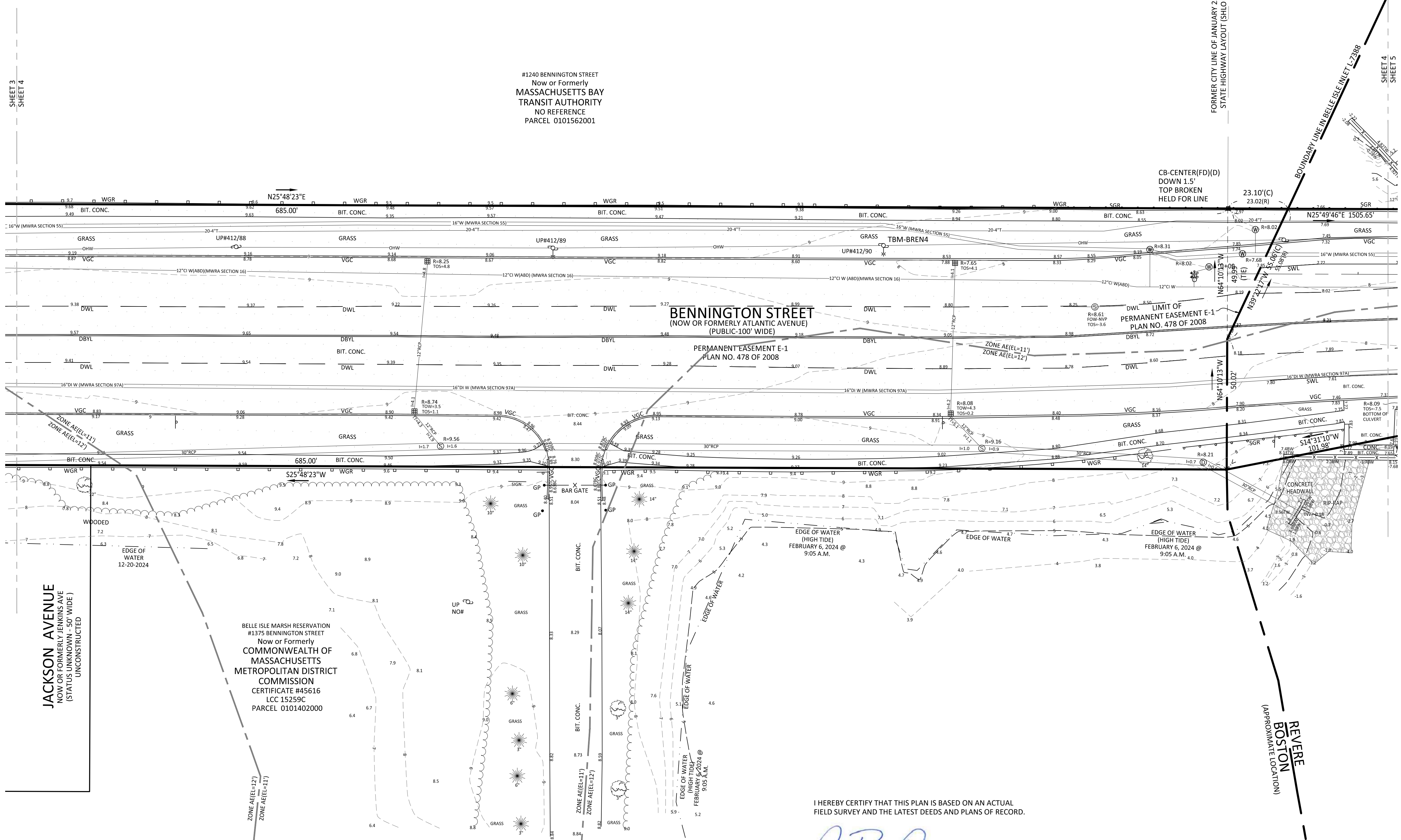
FIELD CHIEF: IL/ST	APPROVED: PBO	PM: PBO	SHEET NO. 3 OF 11
RESEARCH: MN	COMP: MN	CADD: MN	JOB NO. 23396

P: 23396-1 Bennington St. Pl. 2x1. Revere. Vhb (Survey) (Dwg) Submitted to Client V0205-03-07-Final V0205-03-07-Final.dwg



LEGEND

- ⊙ SEWER MANHOLE
- ⊙ DRAIN MANHOLE
- ⊙ ELECTRIC MANHOLE
- ⊙ WATER MANHOLE
- ⊙ TELEPHONE MANHOLE
- ⊙ MBTA MANHOLE
- ⊙ MANHOLE
- ⊙ HYDRANT
- ⊙ WATER SHUT OFF/WATER GATE
- ⊙ GAS SHUT OFF/GAS GATE
- ⊙ BOSTON WATER VALVE
- ⊙ CATCH BASIN
- ⊙ ROUND CATCH BASIN
- ⊙ GUY WIRE
- ⊙ TRAFFIC CONTROL BOX
- ⊙ TRAFFIC SIGNAL
- ⊙ UTILITY POLE
- ⊙ LIGHT POLE
- ⊙ ELECTRIC HANDHOLE
- ⊙ BOLLARD
- ⊙ POST
- ⊙ MAIL BOX
- ⊙ SIGN
- ⊙ AREA DRAIN
- ⊙ CLEAN OUT
- ⊙ MANGROVE
- ⊙ DRILL HOLE
- ⊙ BOUND
- ⊙ IRON SURVEY MARKER
- ⊙ OBSERVATION WELL
- ⊙ WETLANDS
- ⊙ UTILITY POLE W/ LIGHT
- ⊙ TRANSFORMER
- ⊙ GAS METER
- ⊙ ELECTRIC METER
- ⊙ DECIDUOUS TREE
- ⊙ CONIFEROUS TREE
- ⊙ HANDICAP RAMP
- ⊙ GATE POST
- ⊙ IRRIGATION CONTROL VALVE
- ⊙ CURB RETURN
- ⊙ JERSEY BARRIER
- ⊙ INDICATES COMMON OWNERSHIP
- BC BOTTOM OF CURB
- BCB BIT. CONC. BERM
- BIT BITUMINOUS
- BK BACK
- BW BOTTOM OF WALL
- BWSC BOSTON WATER AND SEWER COMMISSION
- (C) CALCULATED
- CB CONCRETE BOUND
- CC CONCRETE CURB
- CHB CHORD BEARING
- CHD CHORD DISTANCE
- CLF CHAIN LINK FENCE
- CONC CONCRETE
- CRW CONCRETE RETAINING WALL
- Δ DELTA ANGLE
- D DISTURBED
- DBYL DOUBLE YELLOW LINE
- DH DRILL HOLE
- DWL DASHED WHITE LINE
- FD FOUND
- FGC FLUSH GRANITE CURB
- FSW FIELD STONE WALK
- FW FULL OF WATER
- I= INVERT ELEVATION
- INACC INACCESSIBLE
- IP IRON PIPE
- IR IRON ROD
- L= ARC LENGTH
- LCC LAND COURT CASE
- LST LANDSCAPE TIMBER
- M&S MULCH & SHRUBS
- MWRA MASSACHUSETTS WATER RESOURCES AUTHORITY
- NF NOT FOUND
- NVP NO VISIBLE PIPES
- R= RADIUS OR RIM ELEVATION
- (R) RECORD
- (REC) RECORD
- RET RETAINING
- SB STONE BOUND
- SGC SLOPED GRANITE CURB
- SGR STEEL GUARD RAIL
- SRW STONE RETAINING WALL
- STF STOCKADE FENCE
- TBM TEMPORARY BENCH MARK
- TC TOP OF CURB
- TOD TOP OF DEBRIS
- TOW TOP OF WATER
- TR CENTERLINE OF TROUGH
- TT TOP OF TRAP
- TW TOP OF WALL
- TYP TYPICAL
- VGC VERTICAL GRANITE CURB
- WF WOOD FENCE
- WIF WROUGHT IRON FENCE
- WGR WOODEN GUARD RAIL
- C— CABLE TELEVISION DRAIN
- E— ELECTRIC
- G— GAS
- G(ABD)— GAS-ABANDONED
- SL— STREET LIGHTING
- OHW— OVERHEAD WIRES
- S— SEWER
- S(FM)— SEWER-FORCE MAIN
- T— TELEPHONE
- W— WATER
- W(ABD)— WATER-ABANDONED
- 12"D(CI)— PIPE SIZE AND MATERIAL
- CI— CAST IRON
- CPP— CORRUGATED PLASTIC PIPE
- DI— DUCTILE IRON
- PVC— POLYVINYL CHLORIDE
- RCP— REINFORCED CONCRETE PIPE
- VCP— VITRIFIED CLAY PIPE
- X— METAL FENCE
- X— WOOD FENCE
- X— WROUGHT IRON FENCE
- X— EDGE OF WOODS
- X— WOODEN GUARD RAIL
- X— STEEL GUARD RAIL
- DSC— DIGSAFE CABLE
- DSE— DIGSAFE ELECTRIC
- DSG— DIGSAFE GAS
- DST— DIGSAFE TELEPHONE
- DSW— DIGSAFE WATER



#1240 BENNINGTON STREET
Now or Formerly
MASSACHUSETTS BAY
TRANSIT AUTHORITY
NO REFERENCE
PARCEL 0101562001

BENNINGTON STREET
(NOW OR FORMERLY ATLANTIC AVENUE)
(PUBLIC-100' WIDE)

PERMANENT EASEMENT E-1
PLAN NO. 478 OF 2008

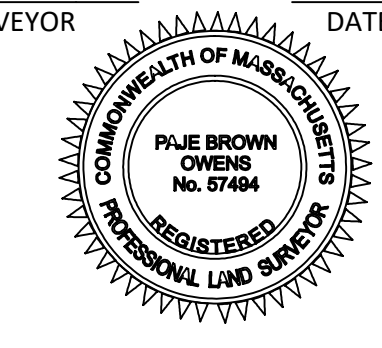
JACKSON AVENUE
NOW OR FORMERLY JENKINS AVE
(STATUS UNKNOWN - 50' WIDE)
UNCONSTRUCTED

BELLE ISLE MARSH RESERVATION
#1375 BENNINGTON STREET
Now or Formerly
COMMONWEALTH OF
MASSACHUSETTS
METROPOLITAN DISTRICT
COMMISSION
CERTIFICATE #45616
LCC 15259C
PARCEL 0101402000

I HEREBY CERTIFY THAT THIS PLAN IS BASED ON AN ACTUAL
FIELD SURVEY AND THE LATEST DEEDS AND PLANS OF RECORD.

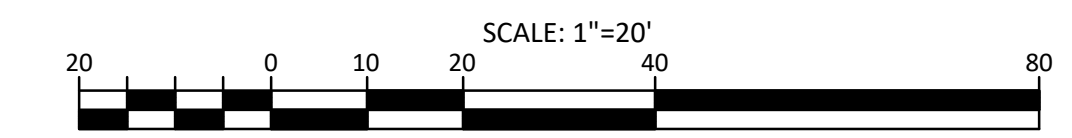
[Signature]
PROFESSIONAL LAND SURVEYOR

4/7/2025
DATE



REVISIONS

NO.	DATE	DESCRIPTION	BY	CHK'D
1	2/7/25	UPDATED KEY SHEET, ADDED ADDITIONAL TOPO SHEETS 8-10, UPDATED SURFACE AND ADDED SHEET 11	MN	PBO



SEE NOTES AND REFERENCES ON SHEET 1

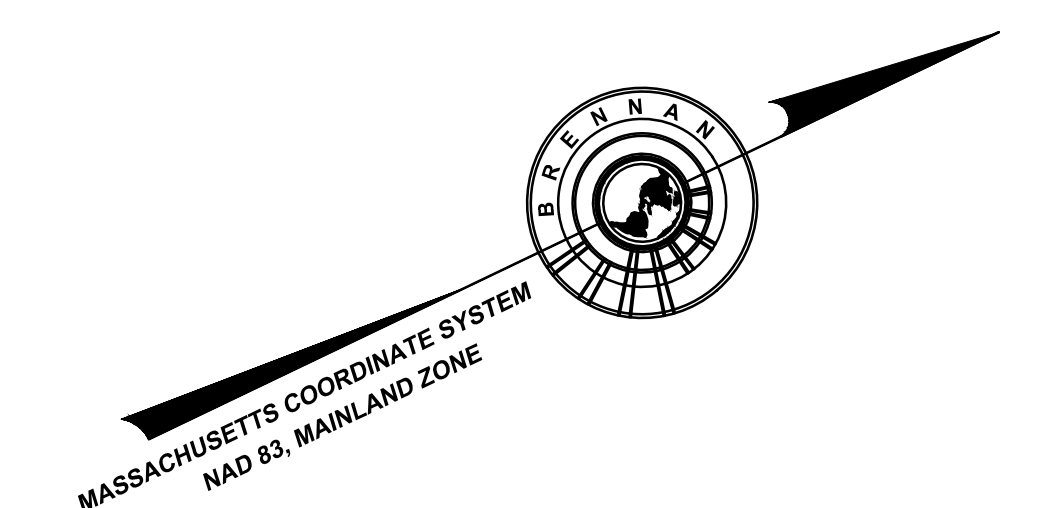
EXISTING CONDITIONS SURVEY
BENNINGTON STREET & FREDERICKS PARK
BOSTON & REVERE, MASSACHUSETTS
(SUFFOLK COUNTY)

PREPARED FOR
VHB
SCALE: 1" = 20' DATE: MARCH 4, 2024

Brennan Consulting
ENGINEERING TRANSPORTATION SURVEYING
24 RAY AVENUE, BURLINGTON, MA
PHONE: (781) 273-3434 WWW.BRENNANCONSULTS.COM

FIELD CHIEF: IL/ST	APPROVED: PBO	PM: PBO	SHEET NO. 4 OF 11
RESEARCH: MN	COMP: MN	CADD: MN	JOB NO. 23396

P: 23396-1_Bennington St, Ph 2&3, Revere, Vhb (Survey) (Dwg) Submitted to Client V02025-03-07-Final V02025-03-07-Final.dwg



LEGEND

- ⊙ SEWER MANHOLE
- ⊕ DRAIN MANHOLE
- ⊖ ELECTRIC MANHOLE
- ⊗ WATER MANHOLE
- ⊘ TELEPHONE MANHOLE
- ⊙ MBTA MANHOLE
- ⊙ MANHOLE
- ⊙ HYDRANT
- ⊙ WATER SHUT OFF/WATER GATE
- ⊙ GAS SHUT OFF/GAS GATE
- ⊙ BOSTON WATER VALVE
- ⊙ CATCH BASIN
- ⊙ ROUND CATCH BASIN
- ⊙ GUY WIRE
- ⊙ TRAFFIC CONTROL BOX
- ⊙ TRAFFIC SIGNAL
- ⊙ UTILITY POLE
- ⊙ LIGHT POLE
- ⊙ ELECTRIC HANDHOLE
- ⊙ BOLLARD
- ⊙ POST
- ⊙ MAIL BOX
- ⊙ SIGN
- ⊙ AREA DRAIN
- ⊙ CLEAN OUT
- ⊙ MANGROVE
- ⊙ DRILL HOLE
- ⊙ BOUND
- ⊙ IRON SURVEY MARKER
- ⊙ OBSERVATION WELL
- ⊙ WETLANDS
- ⊙ UTILITY POLE W/ LIGHT
- ⊙ TRANSFORMER
- ⊙ GAS METER
- ⊙ ELECTRIC METER
- ⊙ DECIDUOUS TREE
- ⊙ CONIFEROUS TREE
- ⊙ HANDICAP RAMP
- ⊙ GATE POST
- ⊙ IRRIGATION CONTROL VALVE
- ⊙ CURB RETURN
- ⊙ JBAR
- ⊙ JERSEY BARRIER
- ⊙ Z
- ⊙ INDICATES COMMON OWNERSHIP
- ⊙ BC
- ⊙ BCB
- ⊙ BIT
- ⊙ BK
- ⊙ BW
- ⊙ BWSC
- ⊙ (C)
- ⊙ CB
- ⊙ CC
- ⊙ CHD
- ⊙ CHD
- ⊙ CLF
- ⊙ CONC
- ⊙ CRW
- ⊙ Δ
- ⊙ D
- ⊙ DBYL
- ⊙ DH
- ⊙ DWL
- ⊙ FD
- ⊙ FGC
- ⊙ FSW
- ⊙ FOW
- ⊙ I
- ⊙ INACC
- ⊙ IP
- ⊙ IR
- ⊙ L
- ⊙ LCC
- ⊙ LST
- ⊙ M&S
- ⊙ MWR
- ⊙ NF
- ⊙ NVP
- ⊙ R
- ⊙ (R)
- ⊙ (REC)
- ⊙ RET
- ⊙ SB
- ⊙ SGC
- ⊙ SGR
- ⊙ SRW
- ⊙ STF
- ⊙ TBM
- ⊙ TC
- ⊙ TOD
- ⊙ TOW
- ⊙ TR
- ⊙ TT
- ⊙ TW
- ⊙ TYP
- ⊙ VGC
- ⊙ WF
- ⊙ WIF
- ⊙ WGR
- ⊙ D
- ⊙ E
- ⊙ G
- ⊙ G(ABD)
- ⊙ SL
- ⊙ OHW
- ⊙ S
- ⊙ S(FM)
- ⊙ T
- ⊙ W
- ⊙ W(ABD)
- ⊙ 12"D(CI)
- ⊙ CI
- ⊙ CPP
- ⊙ DI
- ⊙ PVC
- ⊙ RCP
- ⊙ VCP
- ⊙ X
- ⊙ X
- ⊙ WOOD FENCE
- ⊙ WROUGHT IRON FENCE
- ⊙ EDGE OF WOODS
- ⊙ WOODEN GUARD RAIL
- ⊙ STEEL GUARD RAIL
- ⊙ DIGSAFE CABLE
- ⊙ DIGSAFE ELECTRIC
- ⊙ DIGSAFE GAS
- ⊙ DST
- ⊙ DSW
- ⊙ DIGSAFE WATER



SEE NOTES AND REFERENCES ON SHEET 1

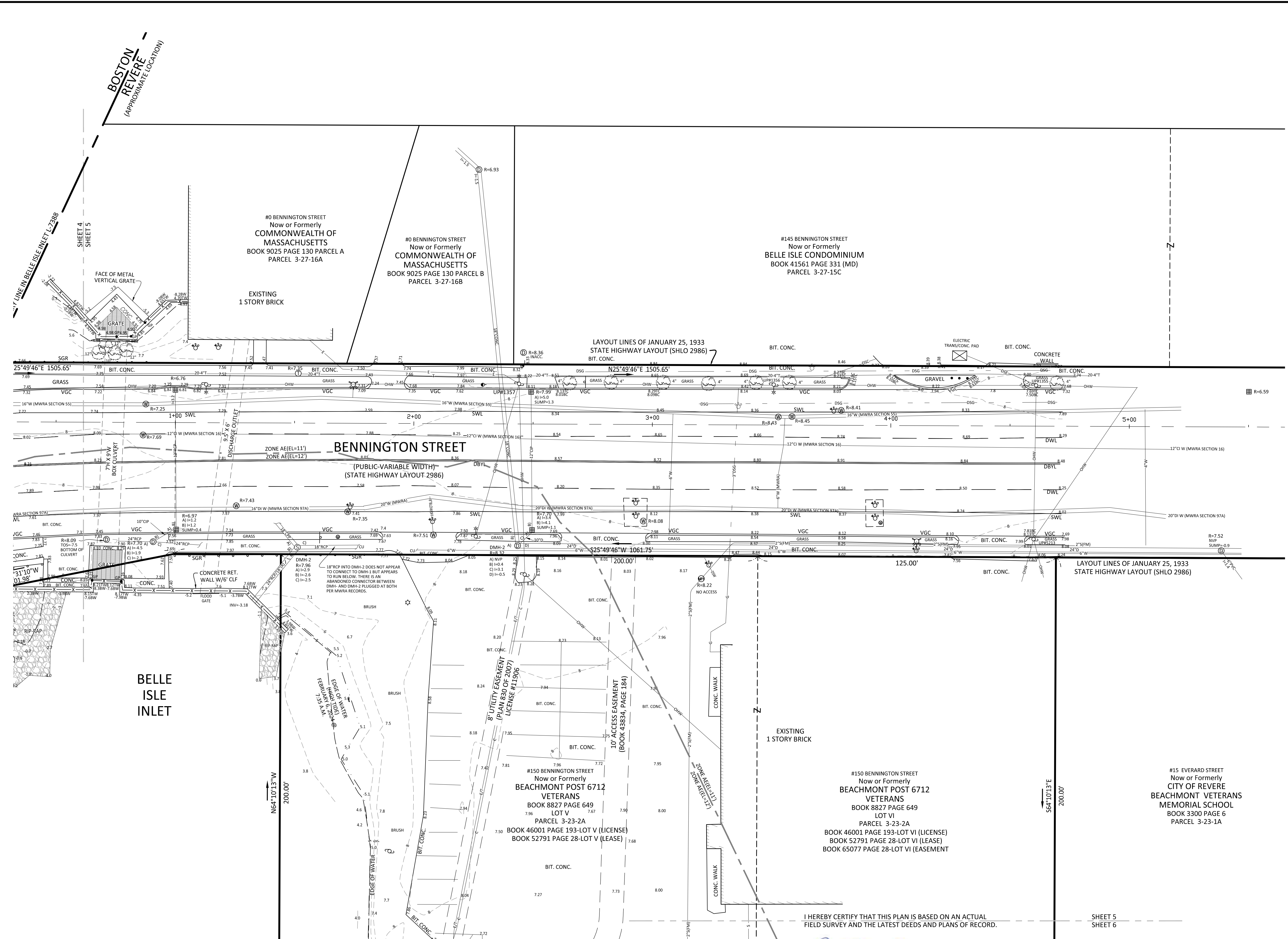
**EXISTING CONDITIONS SURVEY
BENNINGTON STREET &
FREDERICKS PARK
BOSTON & REVERE, MASSACHUSETTS
(SUFFOLK COUNTY)**

PREPARED FOR
VHB

SCALE: 1" = 20' DATE: MARCH 4, 2024

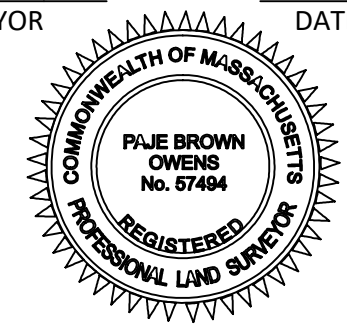
Brennan Consulting
ENGINEERING TRANSPORTATION SURVEYING
24 RAY AVENUE, BURLINGTON, MA
PHONE: (781) 273-3434 WWW.BRENNANCONSULTS.COM

FIELD CHIEF: IL/ST	APPROVED: PBO	PM: PBO	SHEET NO. 5 OF 11
RESEARCH: MN	COMP: MN	CADD: MN	JOB NO. 23396



I HEREBY CERTIFY THAT THIS PLAN IS BASED ON AN ACTUAL FIELD SURVEY AND THE LATEST DEEDS AND PLANS OF RECORD.

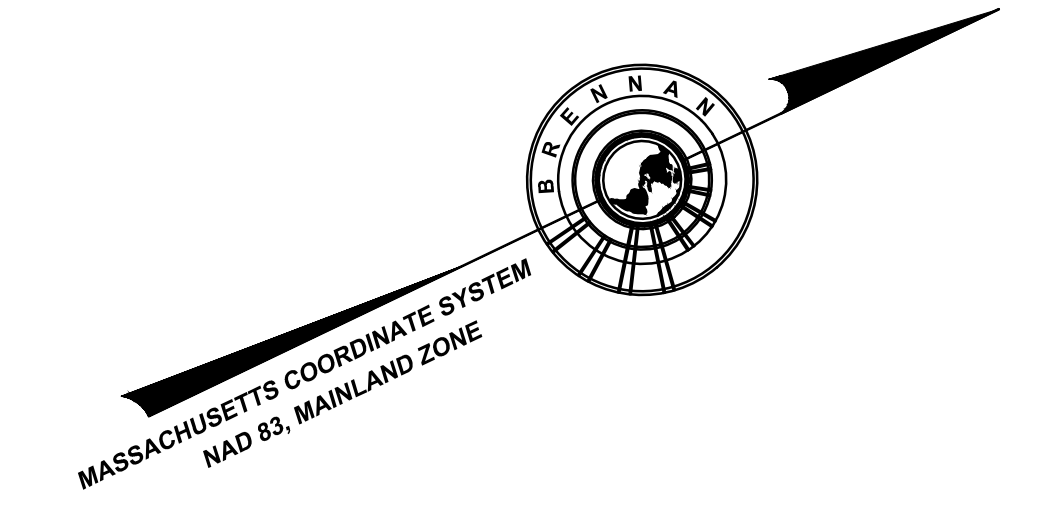
[Signature]
PROFESSIONAL LAND SURVEYOR
DATE: 4/7/2025



REVISIONS

NO.	DATE	DESCRIPTION	BY	CHK'D
1	2/7/25	UPDATED KEY SHEET, ADDED ADDITIONAL TOPO SHEETS 8-10, UPDATED SURFACE AND ADDED SHEET 11	MN	PBO

P: 23396-1 Bennington St., Ph. 282, Revere, Vhb (Survey) (g) Submitted to Client V025-03-07-Final V025-03-07-Final.dwg



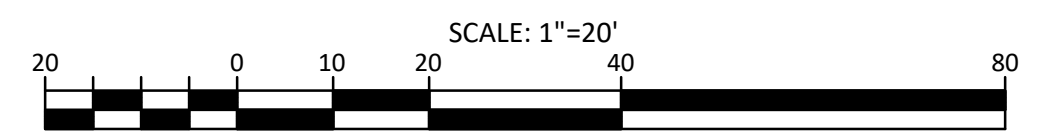
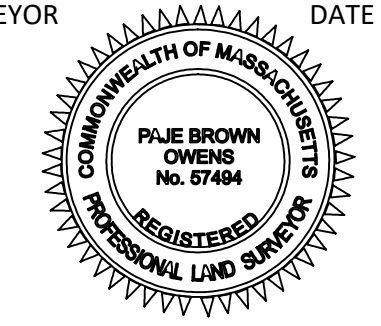
- LEGEND**
- | | | | |
|---|----------------------------|----------|---|
| ⊙ | SEWER MANHOLE | DH | DRILL HOLE |
| ⊖ | DRAIN MANHOLE | DWL | DASHED WHITE LINE |
| ⊕ | ELECTRIC MANHOLE | FD | FOUND |
| ⊖ | WATER MANHOLE | FGC | FLUSH GRANITE CURB |
| ⊕ | TELEPHONE MANHOLE | FSW | FIELD STONE WALK |
| ⊖ | MBTA MANHOLE | FW | FULL OF WATER |
| ⊕ | MANHOLE | I | INVERT ELEVATION |
| ⊖ | HYDRANT | INACC | INACCESSIBLE |
| ⊕ | WATER SHUT OFF/WATER GATE | IP | IRON PIPE |
| ⊖ | GAS SHUT OFF/GAS GATE | IR | IRON ROD |
| ⊕ | BOSTON WATER VALVE | L | ARC LENGTH |
| ⊖ | CATCH BASIN | LCC | LAND COURT CASE |
| ⊕ | ROUND CATCH BASIN | LST | LANDSCAPE TIMBER |
| ⊖ | GLYF WIRE | M&S | MULCH & SHRUBS |
| ⊕ | TRAFFIC CONTROL BOX | MWRA | MASSACHUSETTS WATER RESOURCES AUTHORITY |
| ⊖ | TRAFFIC SIGNAL | NF | NOT FOUND |
| ⊕ | UTILITY POLE | NVP | NO VISIBLE PIPES |
| ⊖ | LIGHT POLE | R | RADIUS OR RIM ELEVATION |
| ⊕ | ELECTRIC HANDHOLE | (R) | RECORD |
| ⊖ | BOLLARD | (REC) | RECORD |
| ⊕ | POST | RET | RETAINING |
| ⊖ | MAIL BOX | SB | STONE BOUND |
| ⊕ | SIGN | SGC | SLOPED GRANITE CURB |
| ⊖ | AREA DRAIN | SGR | STEEL GUARD RAIL |
| ⊕ | CLEAN OUT | SRW | STONE RETAINING WALL |
| ⊖ | MAGNAIL | STF | STOCKADE FENCE |
| ⊕ | DRILL HOLE | TBM | TEMPORARY BENCH MARK |
| ⊖ | BOUND | TC | TOP OF CURB |
| ⊕ | IRON SURVEY MARKER | TOD | TOP OF DEBRIS |
| ⊖ | OBSERVATION WELL | TOW | TOP OF WATER |
| ⊕ | WETLANDS | TR | CENTERLINE OF TROUGH |
| ⊖ | UTILITY POLE W/ LIGHT | TT | TOP OF TRAP |
| ⊕ | TRANSFORMER | TW | TOP OF WALL |
| ⊖ | GAS METER | TYP | TYPICAL |
| ⊕ | ELECTRIC METER | VGC | VERTICAL GRANITE CURB |
| ⊖ | DECIDUOUS TREE | WF | WOOD FENCE |
| ⊕ | CONIFEROUS TREE | WIF | WROUGHT IRON FENCE |
| ⊖ | HANDICAP RAMP | WGR | WOODEN GUARD RAIL |
| ⊕ | GATE POST | C | CABLE TELEVISION |
| ⊖ | IRRIGATION CONTROL VALVE | D | DRAIN |
| ⊕ | CURB RETURN | E | ELECTRIC |
| ⊖ | JERSEY BARRIER | G | GAS |
| ⊕ | INDICATES COMMON OWNERSHIP | G(ABD) | GAS-ABANDONED |
| ⊖ | BOTTOM OF CURB | SL | STREET LIGHTING |
| ⊕ | BIT. CONC. BERM | OHW | OVERHEAD WIRES |
| ⊖ | BITUMINOUS | S | SEWER |
| ⊕ | BACK | S(FM) | SEWER-FORCE MAIN |
| ⊖ | BOTTOM OF WALL | T | TELEPHONE |
| ⊕ | BWSC | W | WATER |
| ⊖ | CALCULATED | W(ABD) | WATER-ABANDONED |
| ⊕ | CONCRETE BOUND | 12"D(CI) | PIPE SIZE AND MATERIAL |
| ⊖ | CONCRETE CURB | CI | CAST IRON |
| ⊕ | CHORD BEARING | CPP | CORRUGATED PLASTIC PIPE |
| ⊖ | CHORD DISTANCE | DI | DUCTILE IRON |
| ⊕ | CHAIN LINK FENCE | PVC | POLYVINYL CHLORIDE |
| ⊖ | CONC | RCP | REINFORCED CONCRETE PIPE |
| ⊕ | CONCRETE RETAINING WALL | VCP | VITRIFIED CLAY PIPE |
| ⊖ | CONCRETE RETAINING WALL | X | METAL FENCE |
| ⊕ | DELTA ANGLE | W | WOOD FENCE |
| ⊖ | DISTURBED | W | EDGE OF WOODS |
| ⊕ | DOUBLE YELLOW LINE | WGR | WOODEN GUARD RAIL |
| | | Δ | STEEL GUARD RAIL |
| | | DSC | DIGSAFE CABLE |
| | | DSE | DIGSAFE ELECTRIC |
| | | DSG | DIGSAFE GAS |
| | | DST | DIGSAFE TELEPHONE |
| | | DSW | DIGSAFE WATER |

BELLE ISLE INLET

REVERE BOSTON (APPROXIMATE LOCATION)

I HEREBY CERTIFY THAT THIS PLAN IS BASED ON AN ACTUAL FIELD SURVEY AND THE LATEST DEEDS AND PLANS OF RECORD.

Paul Brown Owens
 PROFESSIONAL LAND SURVEYOR
 DATE 4/7/2025



SEE NOTES AND REFERENCES ON SHEET 1

EXISTING CONDITIONS SURVEY
BENNINGTON STREET & FREDERICKS PARK
BOSTON & REVERE, MASSACHUSETTS
(SUFFOLK COUNTY)

PREPARED FOR
 VHB
 SCALE: 1" = 20' DATE: MARCH 4, 2024

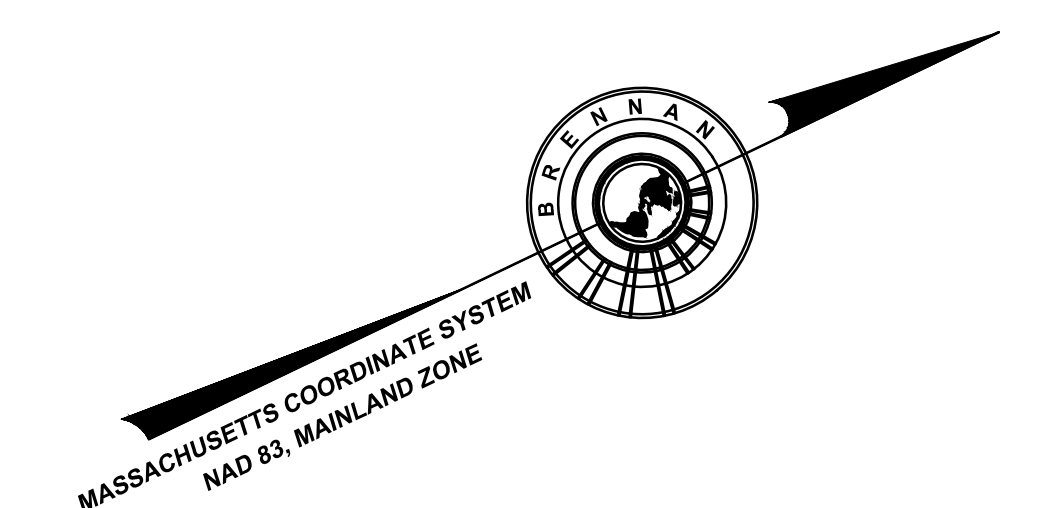


REVISIONS

NO.	DATE	DESCRIPTION	BY	CHK'D
1	2/7/25	UPDATED KEY SHEET, ADDED ADDITIONAL TOPO SHEETS 8-10, UPDATED SURFACE AND ADDED SHEET 11	MN	PBO

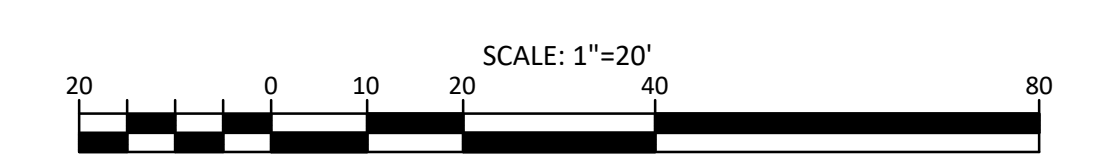
FIELD CHIEF: IL/ST	APPROVED: PBO	PM: PBO	SHEET NO. 6 OF 11
RESEARCH: MN	COMP: MN	CADD: MN	JOB NO. 23396

P: V33396-1_Bennington St, Rk2, Revere, Vhb (Survey) (Dwg) Submitted to Client V025-03-07-Final V025-03-07-Final.dwg



LEGEND

- ⊙ SEWER MANHOLE
- ⊙ DRAIN MANHOLE
- ⊙ ELECTRIC MANHOLE
- ⊙ WATER MANHOLE
- ⊙ TELEPHONE MANHOLE
- ⊙ MBTA MANHOLE
- ⊙ MANHOLE
- ⊙ HYDRANT
- ⊙ WATER SHUT OFF/WATER GATE
- ⊙ GAS SHUT OFF/GAS GATE
- ⊙ BOSTON WATER VALVE
- ⊙ CATCH BASIN
- ⊙ ROUND CATCH BASIN
- ⊙ GUY WIRE
- ⊙ TRAFFIC CONTROL BOX
- ⊙ TRAFFIC SIGNAL
- ⊙ UTILITY POLE
- ⊙ LIGHT POLE
- ⊙ ELECTRIC HANDHOLE
- ⊙ BOLLARD
- ⊙ POST
- ⊙ MAIL BOX
- ⊙ SIGN
- ⊙ AREA DRAIN
- ⊙ CLEAN OUT
- ⊙ MAGNAIL
- ⊙ DRILL HOLE
- ⊙ BOUND
- ⊙ IRON SURVEY MARKER
- ⊙ OBSERVATION WELL
- ⊙ WETLANDS
- ⊙ UTILITY POLE W/ LIGHT
- ⊙ TRANSFORMER
- ⊙ GAS METER
- ⊙ ELECTRIC METER
- ⊙ DECIDUOUS TREE
- ⊙ CONIFEROUS TREE
- ⊙ HANDICAP RAMP
- ⊙ GATE POST
- ⊙ IRRIGATION CONTROL VALVE
- ⊙ CURB RETURN
- ⊙ JERSEY BARRIER
- ⊙ INDICATES COMMON OWNERSHIP
- BC BOTTOM OF CURB
- BCB BIT. CONC. BERM
- BIT BITUMINOUS
- BK BACK
- BW BOTTOM OF WALL
- BWSC BOSTON WATER AND SEWER COMMISSION
- (C) CALCULATED
- CB CONCRETE BOUND
- CC CONCRETE CURB
- CHB CHORD BEARING
- CHD CHORD DISTANCE
- CLF CHAIN LINK FENCE
- CONC CONCRETE
- CRW CONCRETE RETAINING WALL
- Δ DELTA ANGLE
- D DISTURBED
- DBYL DOUBLE YELLOW LINE
- DH DRILL HOLE
- DWL DASHED WHITE LINE
- FD FOUND
- FGC FLUSH GRANITE CURB
- FSW FIELD STONE WALK
- FW FULL OF WATER
- I= INVERT ELEVATION
- INACC INACCESSIBLE
- IP IRON PIPE
- IR IRON ROD
- L= ARC LENGTH
- LCC LAND COURT CASE
- LST LANDSCAPE TIMBER
- M&S MULCH & SHRUBS
- MWRA MASSACHUSETTS WATER RESOURCES AUTHORITY
- NF NOT FOUND
- NVP NO VISIBLE PIPES
- R= RADIUS OR RIM ELEVATION
- (R) RECORD
- (REC) RECORD
- RET RETAINING
- SB STONE BOUND
- SGC SLOPED GRANITE CURB
- SGR STEEL GUARD RAIL
- SRW STONE RETAINING WALL
- STF STOCKADE FENCE
- TBM TEMPORARY BENCH MARK
- TC TOP OF CURB
- TOD TOP OF DEBRIS
- TOW TOP OF WATER
- TR= CENTERLINE OF TROUGH
- TT= TOP OF TRAP
- TW TOP OF WALL
- TYP TYPICAL
- VGC VERTICAL GRANITE CURB
- WF WOOD FENCE
- WIF WROUGHT IRON FENCE
- WGR WOODEN GUARD RAIL
- W CABLE TELEVISION DRAIN
- E ELECTRIC
- G GAS
- G(ABD) GAS-ABANDONED
- SL STREET LIGHTING
- OHW OVERHEAD WIRES
- S SEWER
- S(FM) SEWER-FORCE MAIN
- T TELEPHONE
- W WATER
- W(ABD) WATER-ABANDONED
- 12"(CI) PIPE SIZE AND MATERIAL
- CI CAST IRON
- CPP CORRUGATED PLASTIC PIPE
- DI DUCTILE IRON
- PVC POLYVINYL CHLORIDE
- RCP REINFORCED CONCRETE PIPE
- VCP VITRIFIED CLAY PIPE
- X METAL FENCE
- W WOOD FENCE
- W WROUGHT IRON FENCE
- EDGE OF WOODS
- WOODEN GUARD RAIL
- Δ STEEL GUARD RAIL
- DSC DIGSAFE CABLE
- DSE DIGSAFE ELECTRIC
- DSG DIGSAFE GAS
- DST DIGSAFE TELEPHONE
- DSW DIGSAFE WATER



SEE NOTES AND REFERENCES ON SHEET 1

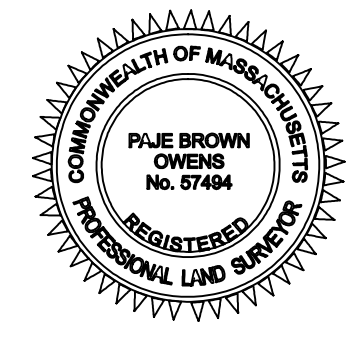
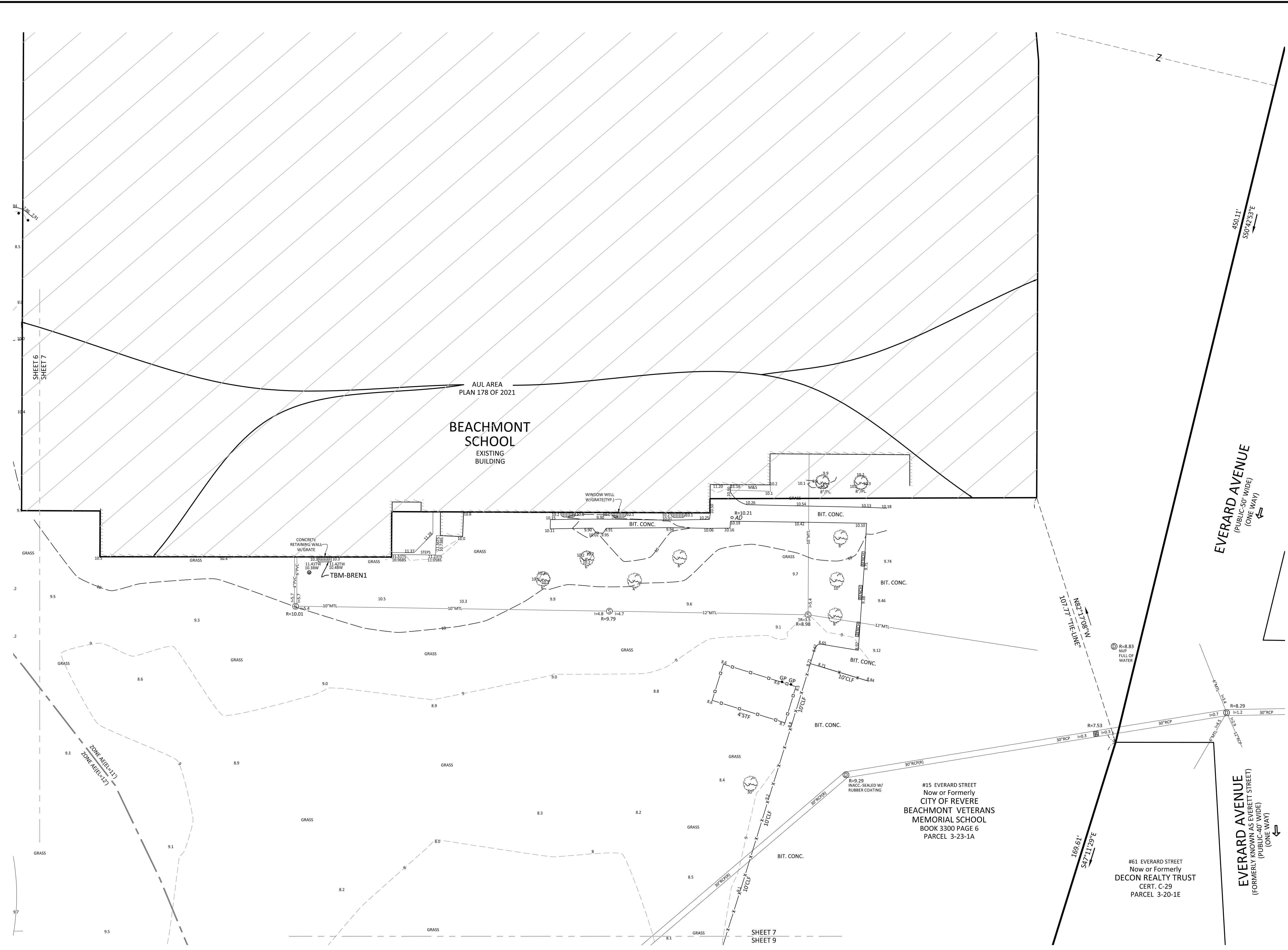
**EXISTING CONDITIONS SURVEY
BENNINGTON STREET &
FREDERICKS PARK
BOSTON & REVERE, MASSACHUSETTS
(SUFFOLK COUNTY)**

PREPARED FOR
VHB

SCALE: 1" = 20' DATE: MARCH 4, 2024

Brennan Consulting
ENGINEERING TRANSPORTATION SURVEYING
24 RAY AVENUE, BURLINGTON, MA
PHONE: (781) 273-3434 WWW.BRENNANCONSULTS.COM

FIELD CHIEF: IL/ST	APPROVED: PBO	PM: PBO	SHEET NO. 7 OF 11
RESEARCH: MN	COMP: MN	CADD: MN	JOB NO. 23396



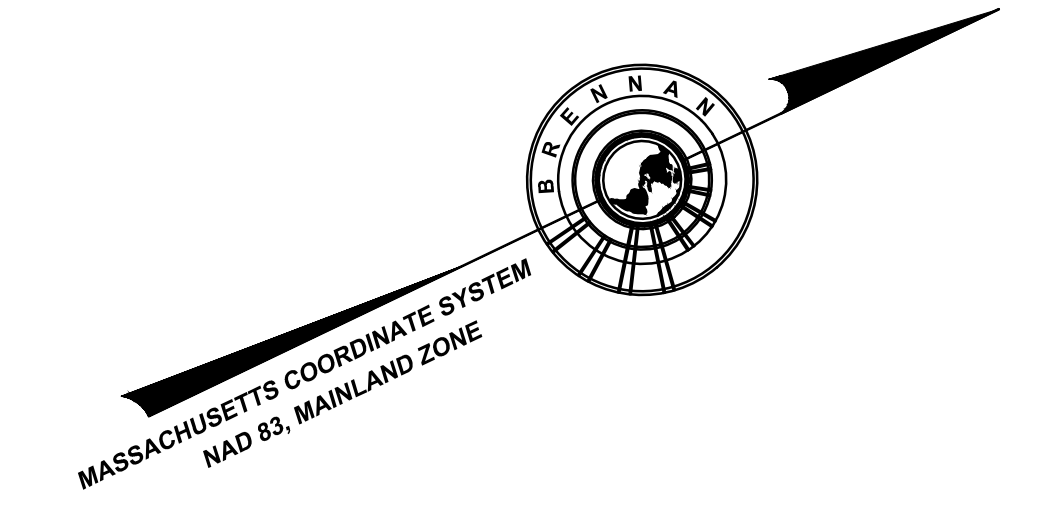
I HEREBY CERTIFY THAT THIS PLAN IS BASED ON AN ACTUAL FIELD SURVEY AND THE LATEST DEEDS AND PLANS OF RECORD.

Pave Brown Owens
PROFESSIONAL LAND SURVEYOR

4/7/2025
DATE

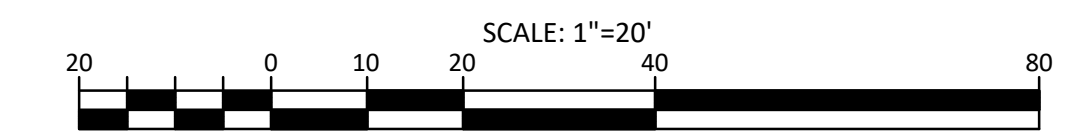
REVISIONS				
NO.	DATE	DESCRIPTION	BY	CHK'D
1	2/7/25	UPDATED KEY SHEET, ADDED ADDITIONAL TOPO SHEETS 8-10, UPDATED SURFACE AND ADDED SHEET 11	MN	PBO

P: 23396-1, Bennington St, Pt 2&3, Revere, VHB (Survey) (Dwg) Submitted to Client V0205-03-07-Final V0205-03-07-Final.dwg



LEGEND

- ⊙ SEWER MANHOLE
- ⊕ DRAIN MANHOLE
- ⊖ ELECTRIC MANHOLE
- ⊗ WATER MANHOLE
- ⊘ TELEPHONE MANHOLE
- ⊙ MBTA MANHOLE
- ⊙ MANHOLE
- ⊙ HYDRANT
- ⊙ WATER SHUT OFF/WATER GATE
- ⊙ GAS SHUT OFF/GAS GATE
- ⊙ BOSTON WATER VALVE
- ⊙ CATCH BASIN
- ⊙ ROUND CATCH BASIN
- ⊙ GUY WIRE
- ⊙ TRAFFIC CONTROL BOX
- ⊙ TRAFFIC SIGNAL
- ⊙ UTILITY POLE
- ⊙ LIGHT POLE
- ⊙ ELECTRIC HANDHOLE
- ⊙ BOLLARD
- ⊙ POST
- ⊙ MAIL BOX
- ⊙ SIGN
- ⊙ AREA DRAIN
- ⊙ CLEAN OUT
- ⊙ MANGNAIL
- ⊙ DRILL HOLE
- ⊙ BOUND
- ⊙ IRON SURVEY MARKER
- ⊙ OBSERVATION WELL
- ⊙ WETLANDS
- ⊙ UTILITY POLE W/ LIGHT
- ⊙ TRANSFORMER
- ⊙ GAS METER
- ⊙ ELECTRIC METER
- ⊙ DECIDUOUS TREE
- ⊙ CONIFEROUS TREE
- ⊙ HANDICAP RAMP
- ⊙ GATE POST
- ⊙ IRRIGATION CONTROL VALVE
- ⊙ CURB RETURN
- ⊙ JERSEY BARRIER
- ⊙ INDICATES COMMON OWNERSHIP
- BC BOTTOM OF CURB
- BCB BIT. CONC. BERM
- BIT BITUMINOUS
- BK BACK
- BW BOTTOM OF WALL
- BWSC BOSTON WATER AND SEWER COMMISSION
- (C) CALCULATED
- CB CONCRETE BOUND
- CC CONCRETE CURB
- CHB CHORD BEARING
- CHD CHORD DISTANCE
- CLF CHAIN LINK FENCE
- CONC CONCRETE
- CRW CONCRETE RETAINING WALL
- Δ DELTA ANGLE
- D DISTURBED
- DBYL DOUBLE YELLOW LINE
- DH DRILL HOLE
- DWL DASHED WHITE LINE
- FD FOUND
- FGC FLUSH GRANITE CURB
- FSW FIELD STONE WALK
- FW FULL OF WATER
- I= INVERT ELEVATION
- INACC INACCESSIBLE
- IP IRON PIPE
- IR IRON ROD
- L= ARC LENGTH
- LCC LAND COURT CASE
- LST LANDSCAPE TIMBER
- M&S MULCH & SHRUBS
- MWRA MASSACHUSETTS WATER RESOURCES AUTHORITY
- NF NOT FOUND
- NVP NO VISIBLE PIPES
- R= RADIUS OR RIM ELEVATION
- (R) RECORD
- (REC) RECORD
- RET RETAINING
- SB STONE BOUND
- SGC SLOPED GRANITE CURB
- SGR STEEL GUARD RAIL
- SRW STONE RETAINING WALL
- STF STOCKADE FENCE
- TBM TEMPORARY BENCH MARK
- TC TOP OF CURB
- TOD TOP OF DEBRIS
- TOW TOP OF WATER
- TR CENTERLINE OF TROUGH
- TT TOP OF TRAP
- TW TOP OF WALL
- TYP TYPICAL
- VGC VERTICAL GRANITE CURB
- WF WOOD FENCE
- WIF WROUGHT IRON FENCE
- WGR WOODEN GUARD RAIL
- C— CABLE TELEVISION DRAIN
- E— ELECTRIC
- G— GAS
- G(ABD)— GAS-ABANDONED
- SL— STREET LIGHTING
- OHW— OVERHEAD WIRES
- S— SEWER
- S(FM)— SEWER-FORCE MAIN
- T— TELEPHONE
- W— WATER
- W(ABD)— WATER-ABANDONED
- 12"D(CI)— PIPE SIZE AND MATERIAL
- CI— CAST IRON
- CPC— CORRUGATED PLASTIC PIPE
- DI— DUCTILE IRON
- PVC— POLYVINYL CHLORIDE
- RCP— REINFORCED CONCRETE PIPE
- VCP— VITRIFIED CLAY PIPE
- X— METAL FENCE
- W— WOOD FENCE
- W— WROUGHT IRON FENCE
- E— EDGE OF WOODS
- W— WOODEN GUARD RAIL
- S— STEEL GUARD RAIL
- DSC— DIGSAFE CABLE
- DSE— DIGSAFE ELECTRIC
- DSG— DIGSAFE GAS
- DST— DIGSAFE TELEPHONE
- DSW— DIGSAFE WATER



EXISTING CONDITIONS SURVEY
BENNINGTON STREET & FREDERICKS PARK
BOSTON & REVERE, MASSACHUSETTS
(SUFFOLK COUNTY)

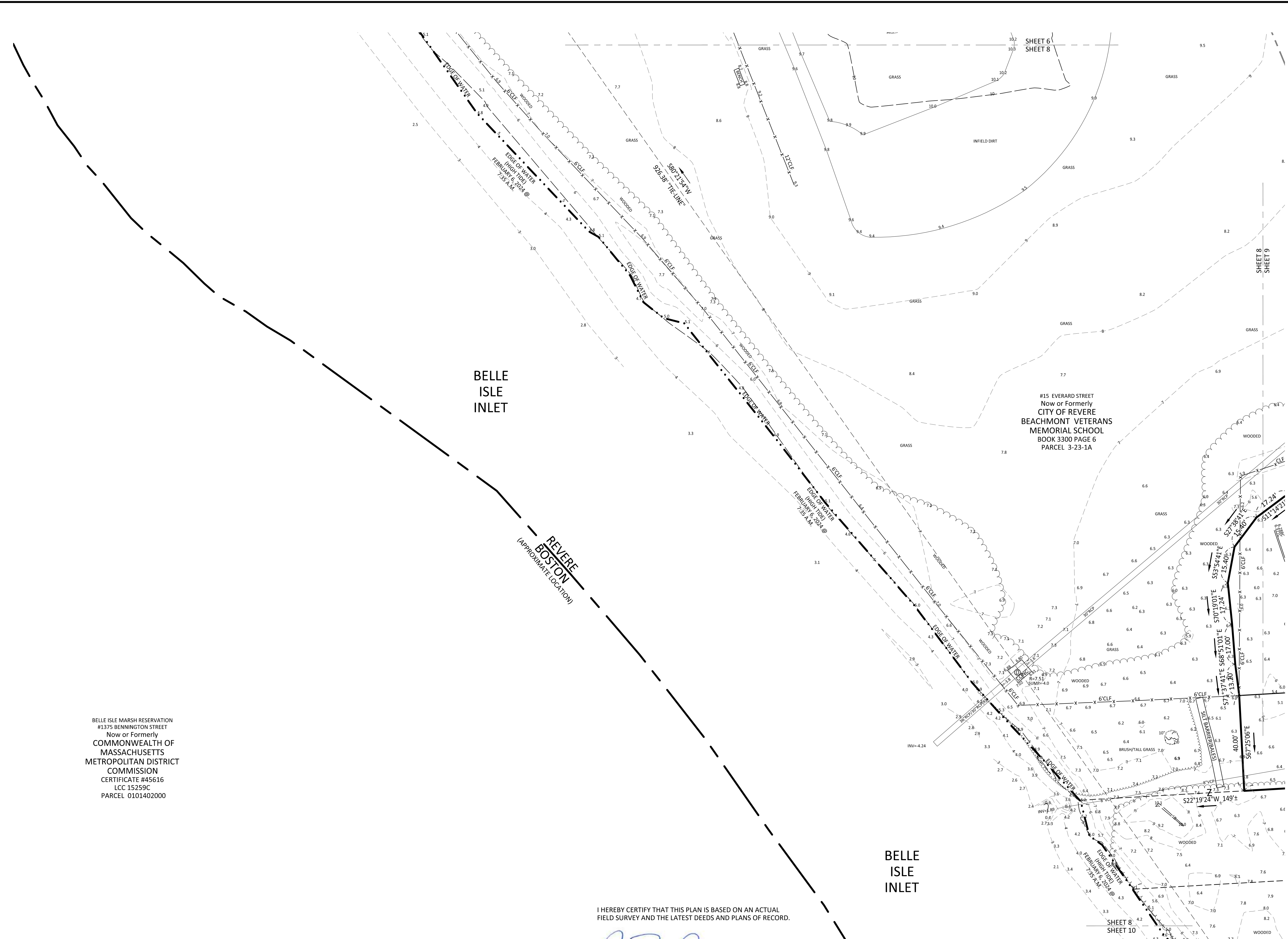
PREPARED FOR
VHB
 SCALE: 1" = 20' DATE: MARCH 4, 2024

Brennan Consulting
 ENGINEERING TRANSPORTATION SURVEYING
 24 RAY AVENUE, BURLINGTON, MA
 PHONE: (781) 273-3434 WWW.BRENNANCONSULTS.COM

FIELD CHIEF: IL/ST	APPROVED: PBO	PM: PBO	SHEET NO. 8 OF 11
RESEARCH: MN	COMP: MN	CADD: MN	JOB NO. 23396

REVISIONS

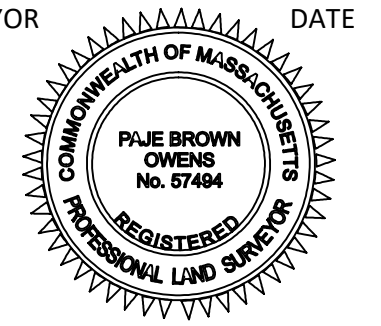
NO.	DATE	DESCRIPTION	BY	CHK'D
1	2/7/25	UPDATED KEY SHEET, ADDED ADDITIONAL TOPO SHEETS 8-10, UPDATED SURFACE AND ADDED SHEET 11	MN	PBO



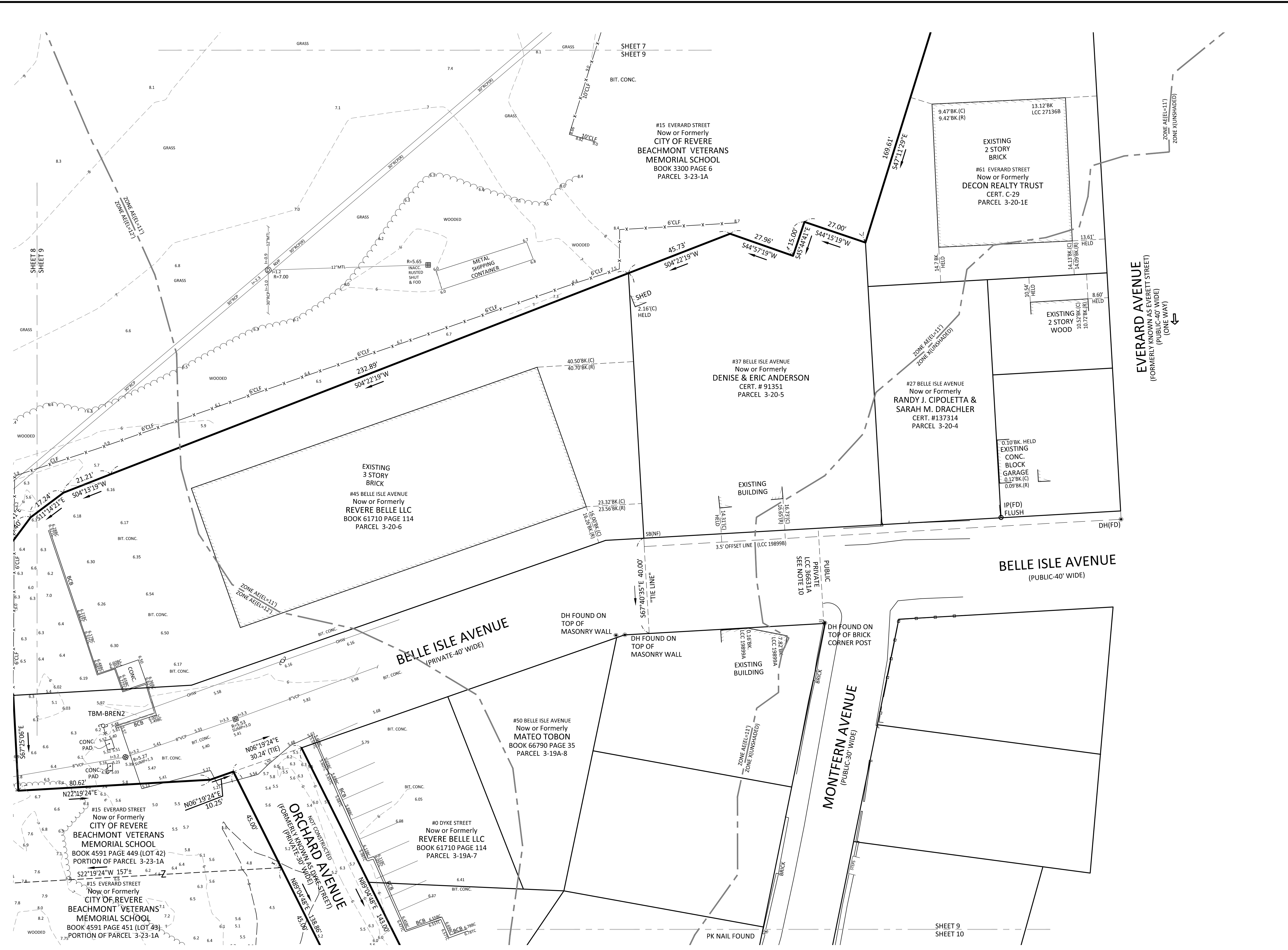
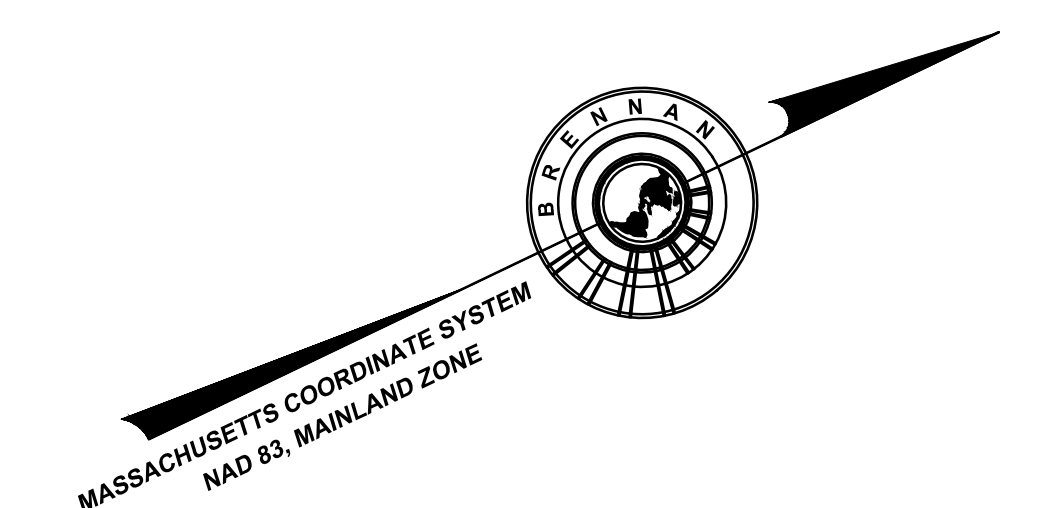
BELLE ISLE MARSH RESERVATION
 #1375 BENNINGTON STREET
 Now or Formerly
 COMMONWEALTH OF MASSACHUSETTS
 METROPOLITAN DISTRICT COMMISSION
 CERTIFICATE #45616
 LCC 15259C
 PARCEL 0101402000

I HEREBY CERTIFY THAT THIS PLAN IS BASED ON AN ACTUAL FIELD SURVEY AND THE LATEST DEEDS AND PLANS OF RECORD.

[Signature]
 PROFESSIONAL LAND SURVEYOR
 DATE 4/7/2025

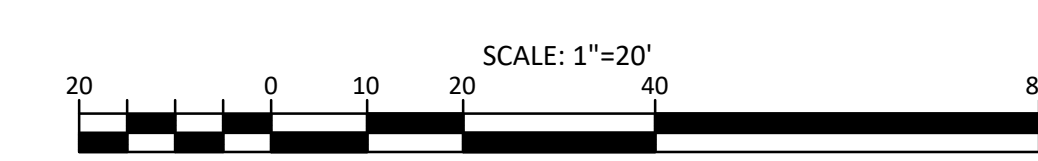


P: 23396-1, Bennington St., Ph. 262, Revere, Vhb (Survey) (09) Submitted to Client 2025-03-07-Final 23396-1-2025-03-07-Final.dwg



LEGEND

- ⊙ SEWER MANHOLE
- ⊙ DRAIN MANHOLE
- ⊙ ELECTRIC MANHOLE
- ⊙ WATER MANHOLE
- ⊙ TELEPHONE MANHOLE
- ⊙ MBTA MANHOLE
- ⊙ MANHOLE
- ⊙ HYDRANT
- ⊙ WATER SHUT OFF/WATER GATE
- ⊙ GAS SHUT OFF/GAS GATE
- ⊙ BOSTON WATER VALVE
- ⊙ CATCH BASIN
- ⊙ ROUND CATCH BASIN
- ⊙ GUY WIRE
- ⊙ TRAFFIC CONTROL BOX
- ⊙ TRAFFIC SIGNAL
- ⊙ UTILITY POLE
- ⊙ LIGHT POLE
- ⊙ ELECTRIC HANDHOLE
- ⊙ BOLLARD
- ⊙ POST
- ⊙ MAIL BOX
- ⊙ SIGN
- ⊙ AREA DRAIN
- ⊙ CLEAN OUT
- ⊙ MAGNAIL
- ⊙ DRILL HOLE
- ⊙ BOUND
- ⊙ IRON SURVEY MARKER
- ⊙ OBSERVATION WELL
- ⊙ WETLANDS
- ⊙ UTILITY POLE W/ LIGHT
- ⊙ TRANSFORMER
- ⊙ GAS METER
- ⊙ ELECTRIC METER
- ⊙ DECIDUOUS TREE
- ⊙ CONIFEROUS TREE
- ⊙ HANDICAP RAMP
- ⊙ GATE POST
- ⊙ IRRIGATION CONTROL VALVE
- ⊙ CURB RETURN
- ⊙ JBAR
- ⊙ JERSEY BARRIER
- ⊙ INDICATES COMMON OWNERSHIP
- BC BOTTOM OF CURB
- BCB BIT. CONC. BERM
- BIT BITUMINOUS
- BK BACK
- BW BOTTOM OF WALL
- BWSC BOSTON WATER AND SEWER COMMISSION
- CB CONCRETE BOUND
- CC CONCRETE CURB
- CHB CHORD BEARING
- CHD CHORD DISTANCE
- CLF CHAIN LINK FENCE
- CONC CONCRETE
- CRW CONCRETE RETAINING WALL
- D DELTA ANGLE
- D DISTURBED
- DBYL DOUBLE YELLOW LINE
- DH DRILL HOLE
- DWL DASHED WHITE LINE
- FD FOUND
- FG FIELD GRANITE CURB
- FSW FIELD STONE WALK
- FW FULL OF WATER
- I INVERT ELEVATION
- INACC INACCESSIBLE
- IP IRON PIPE
- IR IRON ROD
- L ARC LENGTH
- LCC LAND COURT CASE
- LST LANDSCAPE TIMBER
- M&S MULCH & SHRUBS
- MWRA MASSACHUSETTS WATER RESOURCES AUTHORITY
- NF NOT FOUND
- NVP NO VISIBLE PIPES
- R RADIUS OR RIM ELEVATION
- (R) RECORD
- (REC) RECORD
- RET RETAINING
- SB STONE BOUND
- SGC SLOPED GRANITE CURB
- SGR STEEL GUARD RAIL
- SRW STONE RETAINING WALL
- STF STOCKADE FENCE
- TBM TEMPORARY BENCH MARK
- TC TOP OF CURB
- TOD TOP OF DEBRIS
- TOW TOP OF WATER
- TR CENTERLINE OF TROUGH
- TT TOP OF TRAP
- TW TOP OF WALL
- TYP TYPICAL
- VGC VERTICAL GRANITE CURB
- WF WOOD FENCE
- WIF WROUGHT IRON FENCE
- WGR WOODEN GUARD RAIL
- W CABLE TELEVISION DRAIN
- W ELECTRIC
- W GAS
- W(ABD) GAS-ABANDONED
- W STREET LIGHTING
- OHW OVERHEAD WIRES
- S SEWER
- S(FM) SEWER-FORCE MAIN
- T TELEPHONE
- W WATER
- W(ABD) WATER-ABANDONED
- 12"D(CI) PIPE SIZE AND MATERIAL
- CI CAST IRON
- CPP CORRUGATED PLASTIC PIPE
- DI DUCTILE IRON
- PVC POLYVINYL CHLORIDE
- RCP REINFORCED CONCRETE PIPE
- VCP VITRIFIED CLAY PIPE
- X METAL FENCE
- W WOOD FENCE
- W WROUGHT IRON FENCE
- W EDGE OF WOODS
- W WOODEN GUARD RAIL
- Δ STEEL GUARD RAIL
- DSC DIGSAFE CABLE
- DSE DIGSAFE ELECTRIC
- DSG DIGSAFE GAS
- DST DIGSAFE TELEPHONE
- DSW DIGSAFE WATER



**EXISTING CONDITIONS SURVEY
BENNINGTON STREET &
FREDERICKS PARK
BOSTON & REVERE, MASSACHUSETTS
(SUFFOLK COUNTY)**

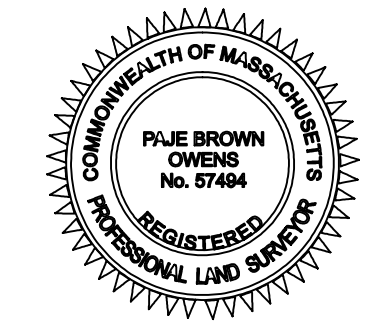
PREPARED FOR
VHB

SCALE: 1" = 20' DATE: MARCH 4, 2024

Brennan Consulting
ENGINEERING TRANSPORTATION SURVEYING
24 RAY AVENUE, BURLINGTON, MA
PHONE: (781) 273-3434 WWW.BRENNANCONSULTS.COM

FIELD CHIEF: IL/ST	APPROVED: PBO	PM: PBO	SHEET NO. 9 OF 11
RESEARCH: MN	COMP: MN	CADD: MN	JOB NO. 23396

I HEREBY CERTIFY THAT THIS PLAN IS BASED ON AN ACTUAL FIELD SURVEY AND THE LATEST DEEDS AND PLANS OF RECORD.



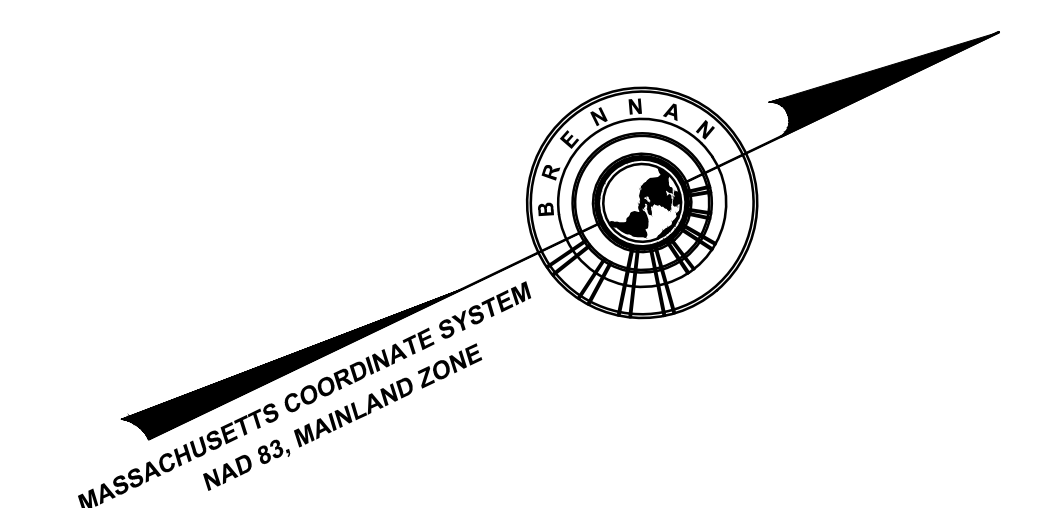
P.J.E. Brown
PROFESSIONAL LAND SURVEYOR

4/7/2025
DATE

REVISIONS

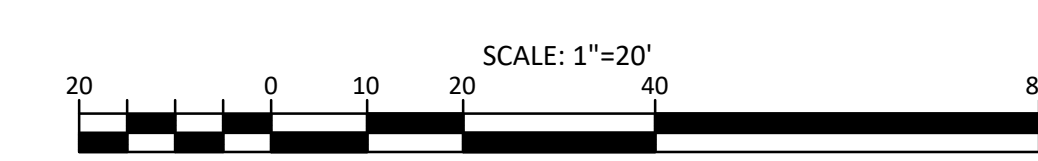
NO.	DATE	DESCRIPTION	BY	CHK'D
1	2/7/25	UPDATED KEY SHEET, ADDED ADDITIONAL TOPO SHEETS 8-10, UPDATED SURFACE AND ADDED SHEET 11	MN	PBO

P: 23396-1, Bennington St., Ph. 262, Revere, VHB (Survey) (09) Submitted to Client V0205-03-07-Final V0205-03-07-Final.dwg



LEGEND

- ⊙ SEWER MANHOLE
- ⊖ DRAIN MANHOLE
- ⊕ ELECTRIC MANHOLE
- ⊖ WATER MANHOLE
- ⊕ TELEPHONE MANHOLE
- ⊖ MBTA MANHOLE
- ⊕ MANHOLE
- ⊖ HYDRANT
- ⊕ WATER SHUT OFF/WATER GATE
- ⊖ GAS SHUT OFF/GAS GATE
- ⊕ BOSTON WATER VALVE
- ⊖ CATCH BASIN
- ⊕ ROUND CATCH BASIN
- ⊖ GUY WIRE
- ⊕ TRAFFIC CONTROL BOX
- ⊖ TRAFFIC SIGNAL
- ⊕ UTILITY POLE
- ⊖ LIGHT POLE
- ⊕ ELECTRIC HANDHOLE
- ⊖ BOLLARD
- ⊕ POST
- ⊖ MAIL BOX
- ⊕ SIGN
- ⊖ AREA DRAIN
- ⊕ CLEAN OUT
- ⊖ MANGROVE
- ⊕ DRILL HOLE
- ⊖ BOUND
- ⊕ IRON SURVEY MARKER
- ⊖ OBSERVATION WELL
- ⊕ WETLANDS
- ⊖ UTILITY POLE W/ LIGHT
- ⊕ TRANSFORMER
- ⊖ GAS METER
- ⊕ ELECTRIC METER
- ⊖ DECIDUOUS TREE
- ⊕ CONIFEROUS TREE
- ⊖ HANDICAP RAMP
- ⊕ GATE POST
- ⊖ IRRIGATION CONTROL VALVE
- ⊕ CURB RETURN
- ⊖ JERSEY BARRIER
- ⊕ INDICATES COMMON OWNERSHIP
- ⊖ BOTTOM OF CURB
- ⊕ BIT. CONC. BERM
- ⊖ BITUMINOUS
- ⊕ BACK
- ⊖ BOTTOM OF WALL
- ⊕ BOSTON WATER AND SEWER COMMISSION
- ⊖ CALCULATED
- ⊕ CONCRETE BOUND
- ⊖ CONCRETE CURB
- ⊕ CHORD BEARING
- ⊖ CHORD DISTANCE
- ⊕ CHAIN LINK FENCE
- ⊖ CONCRETE
- ⊕ CONCRETE RETAINING WALL
- ⊖ DELTA ANGLE
- ⊕ DISTURBED
- ⊖ DOUBLE YELLOW LINE
- ⊕ DRILL HOLE
- ⊖ DASHED WHITE LINE
- ⊕ FOUND
- ⊖ FLUSH GRANITE CURB
- ⊕ FIELD STONE WALK
- ⊖ FULL OF WATER
- ⊕ INVERT ELEVATION
- ⊖ INACCESSIBLE
- ⊕ IRON PIPE
- ⊖ IRON ROD
- ⊕ ARC LENGTH
- ⊖ LAND COURT CASE
- ⊕ LANDSCAPE TIMBER
- ⊖ MULCH & SHRUBS
- ⊕ MASSACHUSETTS WATER RESOURCES AUTHORITY
- ⊖ NOT FOUND
- ⊕ NO VISIBLE PIPES
- ⊖ RADIUS OR RIM ELEVATION
- ⊕ RECORD
- ⊖ RECORD
- ⊕ RETAINING
- ⊖ STONE BOUND
- ⊕ SLOPED GRANITE CURB
- ⊖ STEEL GUARD RAIL
- ⊕ STONE RETAINING WALL
- ⊖ STOCKADE FENCE
- ⊕ TEMPORARY BENCH MARK
- ⊖ TOP OF CURB
- ⊕ TOP OF DEBRIS
- ⊖ TOP OF WATER
- ⊕ CENTERLINE OF TROUGH
- ⊖ TOP OF TRAP
- ⊕ TOP OF WALL
- ⊖ TYPICAL
- ⊕ VERTICAL GRANITE CURB
- ⊖ WOOD FENCE
- ⊕ WROUGHT IRON FENCE
- ⊖ WOODEN GUARD RAIL
- ⊕ CABLE TELEVISION
- ⊖ ELECTRIC
- ⊕ GAS
- ⊖ GAS-ABANDONED
- ⊕ STREET LIGHTING
- ⊖ OVERHEAD WIRES
- ⊕ SEWER
- ⊖ SEWER-FORCE MAIN
- ⊕ TELEPHONE
- ⊖ WATER
- ⊕ WATER-ABANDONED
- ⊖ PIPE SIZE AND MATERIAL
- ⊕ CAST IRON
- ⊖ CORRUGATED PLASTIC PIPE
- ⊕ DUCTILE IRON
- ⊖ POLYVINYL CHLORIDE
- ⊕ REINFORCED CONCRETE PIPE
- ⊖ VITRIFIED CLAY PIPE
- ⊕ METAL FENCE
- ⊖ WOOD FENCE
- ⊕ WROUGHT IRON FENCE
- ⊖ EDGE OF WOODS
- ⊕ WOODEN GUARD RAIL
- ⊖ STEEL GUARD RAIL
- ⊕ DIGSAFE CABLE
- ⊖ DIGSAFE ELECTRIC
- ⊕ DIGSAFE GAS
- ⊖ DIGSAFE TELEPHONE
- ⊕ DIGSAFE WATER



SEE NOTES AND REFERENCES ON SHEET 1

**EXISTING CONDITIONS SURVEY
BENNINGTON STREET &
FREDERICKS PARK
BOSTON & REVERE, MASSACHUSETTS
(SUFFOLK COUNTY)**

PREPARED FOR
VHB
SCALE: 1" = 20'
DATE: MARCH 4, 2024



I HEREBY CERTIFY THAT THIS PLAN IS BASED ON AN ACTUAL FIELD SURVEY AND THE LATEST DEEDS AND PLANS OF RECORD.

Paul Brown
PROFESSIONAL LAND SURVEYOR

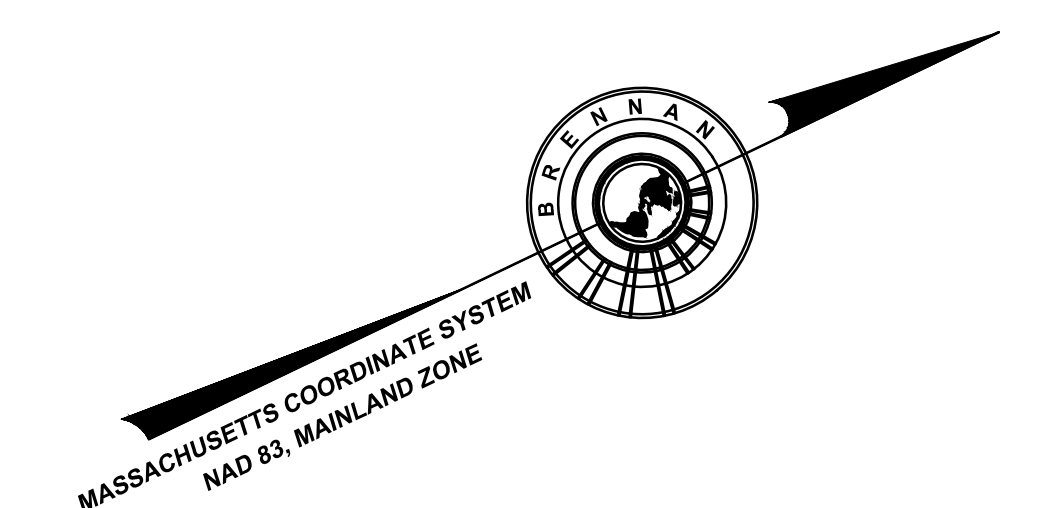
4/7/2025
DATE

REVISIONS

NO.	DATE	DESCRIPTION	BY	CHK'D
1	2/7/25	UPDATED KEY SHEET, ADDED ADDITIONAL TOPO SHEETS 8-10, UPDATED SURFACE AND ADDED SHEET 11	MN	PBO

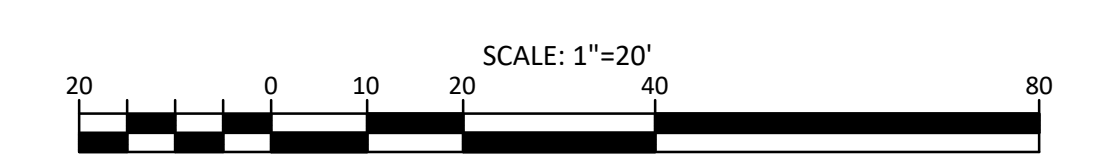
FIELD CHIEF: IL/ST	APPROVED: PBO	PM: PBO	SHEET NO. 10 OF 11
RESEARCH: MN	COMP: MN	CADD: MN	JOB NO. 23396

P: 23396-1 Bennington St, Ph. 282, Revere, Vhb (Survey) (Dwg) Submitted to Client 2/25/25-11-2025-03-07-Final.dwg



LEGEND

- ⊙ SEWER MANHOLE
- ⊖ DRAIN MANHOLE
- ⊕ ELECTRIC MANHOLE
- ⊖ WATER MANHOLE
- ⊕ TELEPHONE MANHOLE
- ⊖ MBTA MANHOLE
- ⊕ MANHOLE
- ⊖ HYDRANT
- ⊕ WATER SHUT OFF/WATER GATE
- ⊖ GAS SHUT OFF/GAS GATE
- ⊕ BOSTON WATER VALVE
- ⊖ CATCH BASIN
- ⊕ ROUND CATCH BASIN
- ⊖ GUY WIRE
- ⊕ TRAFFIC CONTROL BOX
- ⊖ TRAFFIC SIGNAL
- ⊕ UTILITY POLE
- ⊖ LIGHT POLE
- ⊕ ELECTRIC HANDHOLE
- ⊖ BOLLARD
- ⊕ POST
- ⊖ MAIL BOX
- ⊕ SIGN
- ⊖ AREA DRAIN
- ⊕ CLEAN OUT
- ⊖ MANGNAIL
- ⊕ DRILL HOLE
- ⊖ BOUND
- ⊕ IRON SURVEY MARKER
- ⊖ OBSERVATION WELL
- ⊕ WETLANDS
- ⊖ UTILITY POLE W/ LIGHT
- ⊕ TRANSFORMER
- ⊖ GAS METER
- ⊕ ELECTRIC METER
- ⊖ DECIDUOUS TREE
- ⊕ CONIFEROUS TREE
- ⊖ HANDICAP RAMP
- ⊕ GATE POST
- ⊖ IRRIGATION CONTROL VALVE
- ⊕ CURB RETURN
- ⊖ JERSEY BARRIER
- ⊕ INDICATES COMMON OWNERSHIP
- BC BOTTOM OF CURB
- BCB BIT. CONC. BERM
- BIT BITUMINOUS
- BK BACK
- BW BOTTOM OF WALL
- BWSC BOSTON WATER AND SEWER COMMISSION
- (C) CALCULATED
- CB CONCRETE BOUND
- CC CONCRETE CURB
- CHB CHORD BEARING
- CHD CHORD DISTANCE
- CLF CHAIN LINK FENCE
- CONC CONCRETE
- CRW CONCRETE RETAINING WALL
- Δ DELTA ANGLE
- D DISTURBED
- DBYL DOUBLE YELLOW LINE
- DH DRILL HOLE
- DWL DASHED WHITE LINE
- FD FOUND
- FCC FLUSH GRANITE CURB
- FSW FIELD STONE WALK
- FW FULL OF WATER
- I= INVERT ELEVATION
- INACC INACCESSIBLE
- IP IRON PIPE
- IR IRON ROD
- L= ARC LENGTH
- LCC LAND COURT CASE
- LST LANDSCAPE TIMBER
- M&S MULCH & SHRUBS
- MWRA MASSACHUSETTS WATER RESOURCES AUTHORITY
- NF NOT FOUND
- NVP NO VISIBLE PIPES
- R= RADIUS OR RIM ELEVATION
- (R) RECORD
- (REC) RECORD
- RET RETAINING
- SB STONE BOUND
- SGC SLOPED GRANITE CURB
- SGR STEEL GUARD RAIL
- SRW STONE RETAINING WALL
- STF STOCKADE FENCE
- TBM TEMPORARY BENCH MARK
- TC TOP OF CURB
- TOD TOP OF DEBRIS
- TOW TOP OF WATER
- TR CENTERLINE OF TROUGH
- TT TOP OF TRAP
- TW TOP OF WALL
- TYP TYPICAL
- VGC VERTICAL GRANITE CURB
- WF WOOD FENCE
- WIF WROUGHT IRON FENCE
- WGR WOODEN GUARD RAIL
- C— CABLE TELEVISION DRAIN
- E— ELECTRIC
- G— GAS
- G(ABD)— GAS-ABANDONED
- SL— STREET LIGHTING
- OHW— OVERHEAD WIRES
- S— SEWER
- S(FM)— SEWER-FORCE MAIN
- T— TELEPHONE
- W— WATER
- W(ABD)— WATER-ABANDONED
- 12"D(CI)— PIPE SIZE AND MATERIAL
- CI— CAST IRON
- CPP— CORRUGATED PLASTIC PIPE
- DI— DUCTILE IRON
- PVC— POLYVINYL CHLORIDE
- RCP— REINFORCED CONCRETE PIPE
- VCP— VITRIFIED CLAY PIPE
- X— METAL FENCE
- W— WOOD FENCE
- W— WROUGHT IRON FENCE
- E— EDGE OF WOODS
- W— WOODEN GUARD RAIL
- S— STEEL GUARD RAIL
- DSC— DIGSAFE CABLE
- DSE— DIGSAFE ELECTRIC
- DSG— DIGSAFE GAS
- DST— DIGSAFE TELEPHONE
- DSW— DIGSAFE WATER



SEE NOTES AND REFERENCES ON SHEET 1

**EXISTING CONDITIONS SURVEY
BENNINGTON STREET &
FREDERICKS PARK
BOSTON & REVERE, MASSACHUSETTS
(SUFFOLK COUNTY)**

PREPARED FOR
VHB
SCALE: 1" = 20' DATE: MARCH 4, 2024

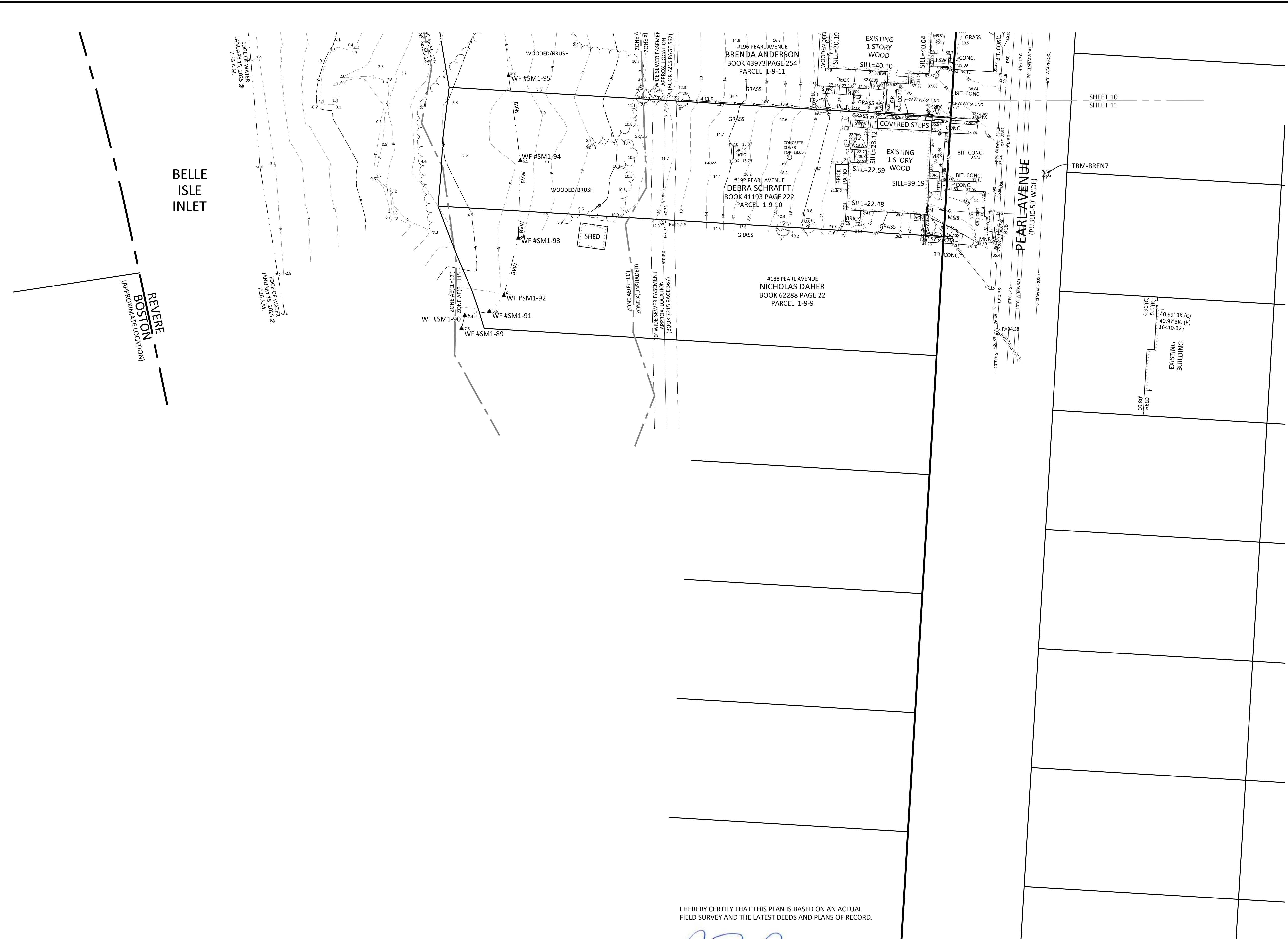
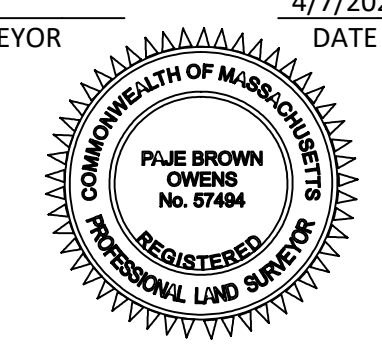
Brennan Consulting
ENGINEERING TRANSPORTATION SURVEYING
24 RAY AVENUE, BURLINGTON, MA
PHONE: (781) 273-3434 WWW.BRENNANCONSULTS.COM

FIELD CHIEF:IL/ST	APPROVED:PBO	PM:PBO	SHEET NO. 11 OF 11
RESEARCH:MN	COMP:MN	CADD:MN	JOB NO. 23396

REVISIONS				
NO.	DATE	DESCRIPTION	BY	CHK'D
1	2/7/25	UPDATED KEY SHEET , ADDED ADDITIONAL TOPO SHEETS 8-10, UPDATED SURFACE AND ADDED SHEET 11	MN	PBO

I HEREBY CERTIFY THAT THIS PLAN IS BASED ON AN ACTUAL FIELD SURVEY AND THE LATEST DEEDS AND PLANS OF RECORD.

[Signature]
PROFESSIONAL LAND SURVEYOR DATE 4/7/2025



P: 23396-1_Bennington St, Pt 2&3, Revere, Wb (Survey) (Dwg) Submitted to Client 2025-03-07-Final 2025-03-07-Final.dwg