

29 HANCOCK ST

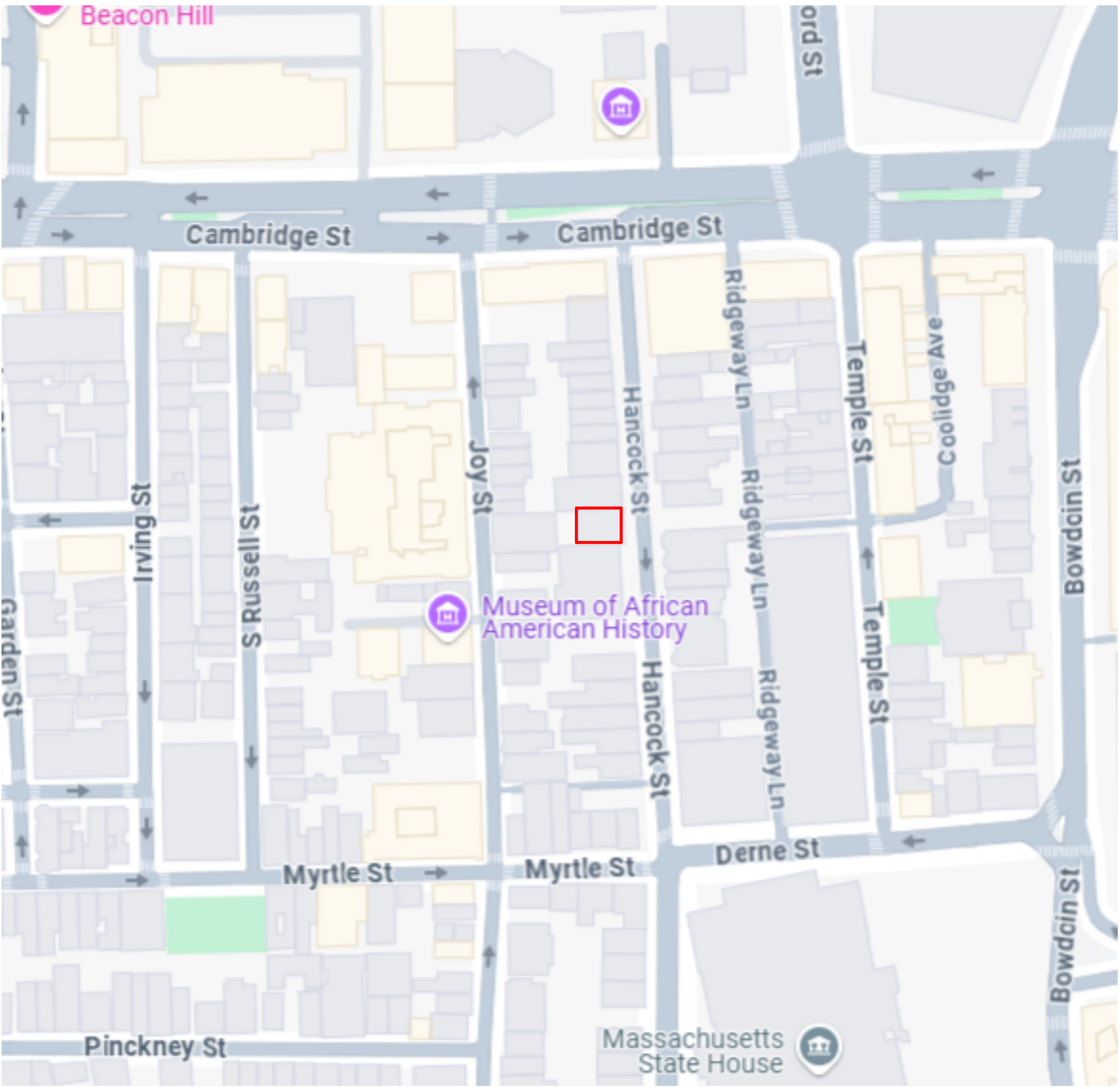
BOSTON, MA 02114

BEACON HILL ARCHITECTURAL DISTRICT

08/21/25



EMBARC





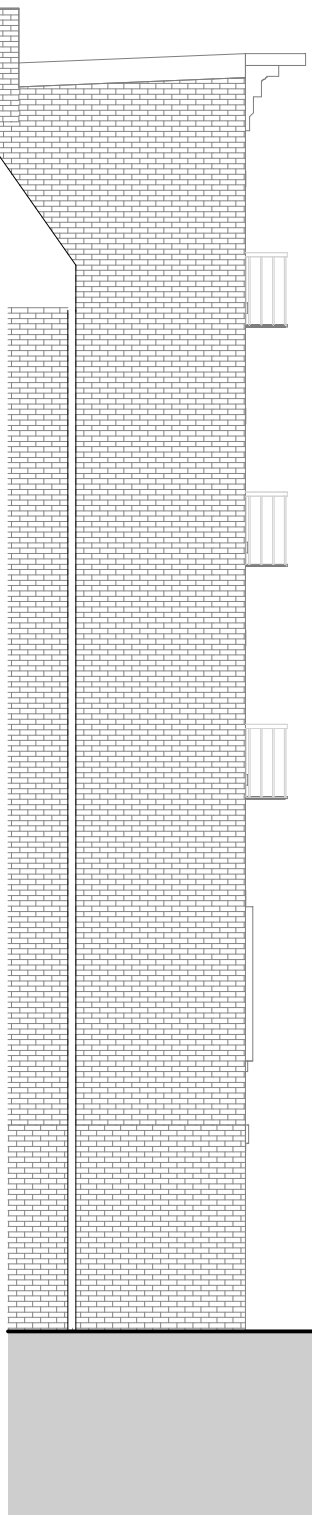
33 HANCOCK ST



29 HANCOCK ST



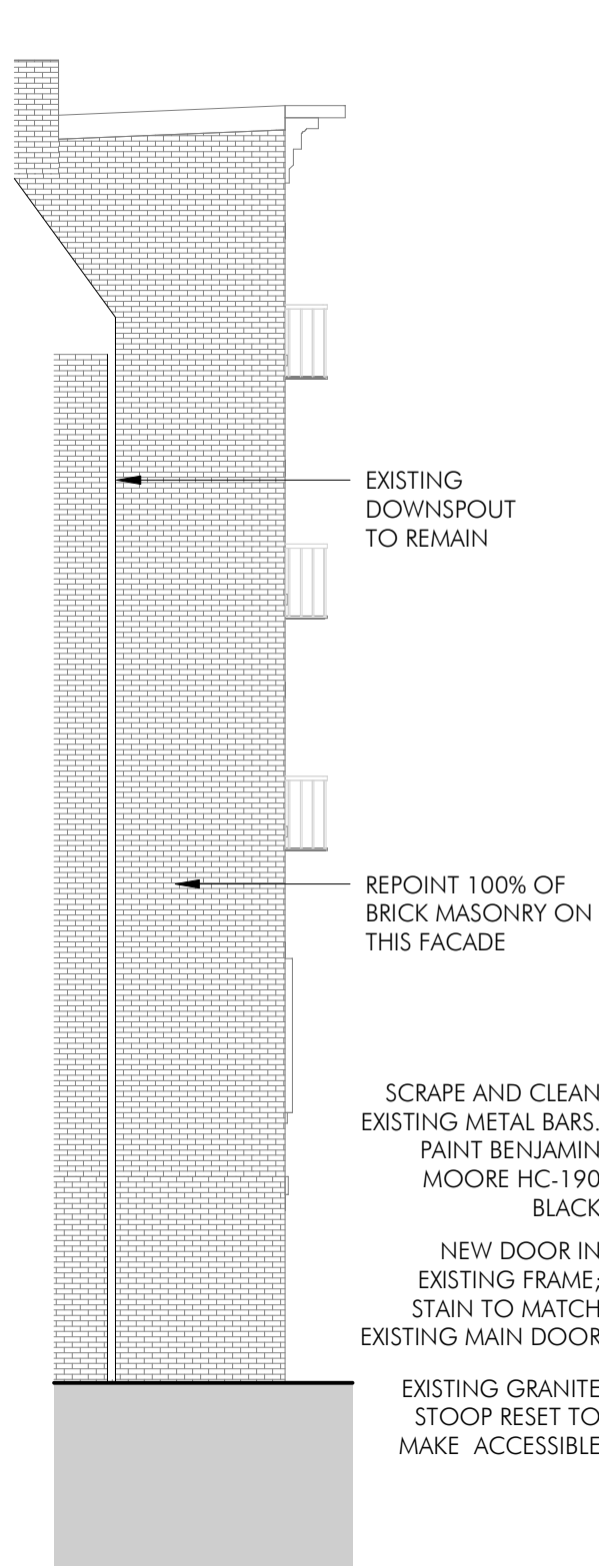
27 HANCOCK ST



EXISTING SIDE ELEVATION



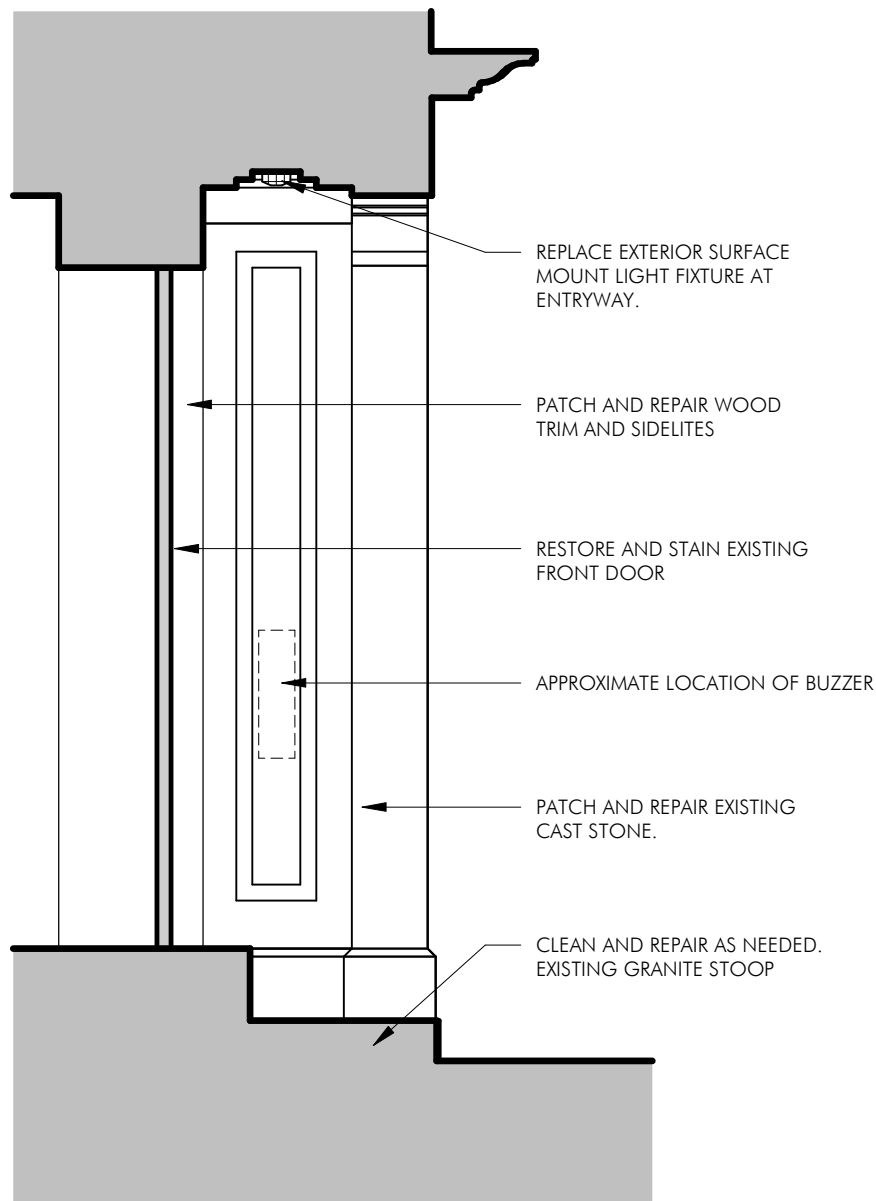
EXISTING FRONT ELEVATION



EXISTING SIDE ELEVATION



EXISTING FRONT ELEVATION



FRONT ENTRY SECTION



REPLACE EXTERIOR SURFACE MOUNT LIGHT FIXTURE AT ENTRYWAY.

SCRAPE AND CLEAN EXISTING METAL BARS. PAINT BENJAMIN MOORE HC-190 BLACK

PATCH AND REPAIR WOOD TRIM AND SIDELITES. PAINT BENJAMIN MOORE HC-69 "WHITALL BROWN"

RESTORE AND STAIN EXISTING FRONT DOOR.

PATCH AND REPAIR EXISTING CAST STONE. PAINT BENJAMIN MOORE HC-69 "WHITALL BROWN"

CLEAN AND REPAIR AS NEEDED, EXISTING GRANITE STOOP



PROPOSED EXTERIOR SURFACE MOUNT



PROPOSED BUZZER



PROPOSED DEADBOLT AND KNOB



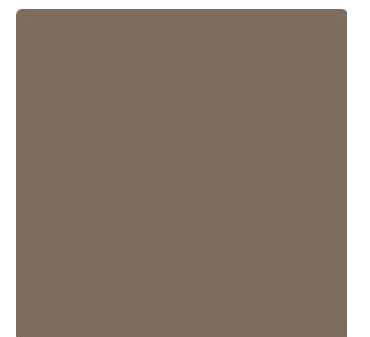
BALDWIN 5" HOUSE NUMBERS



HC190 BLACK

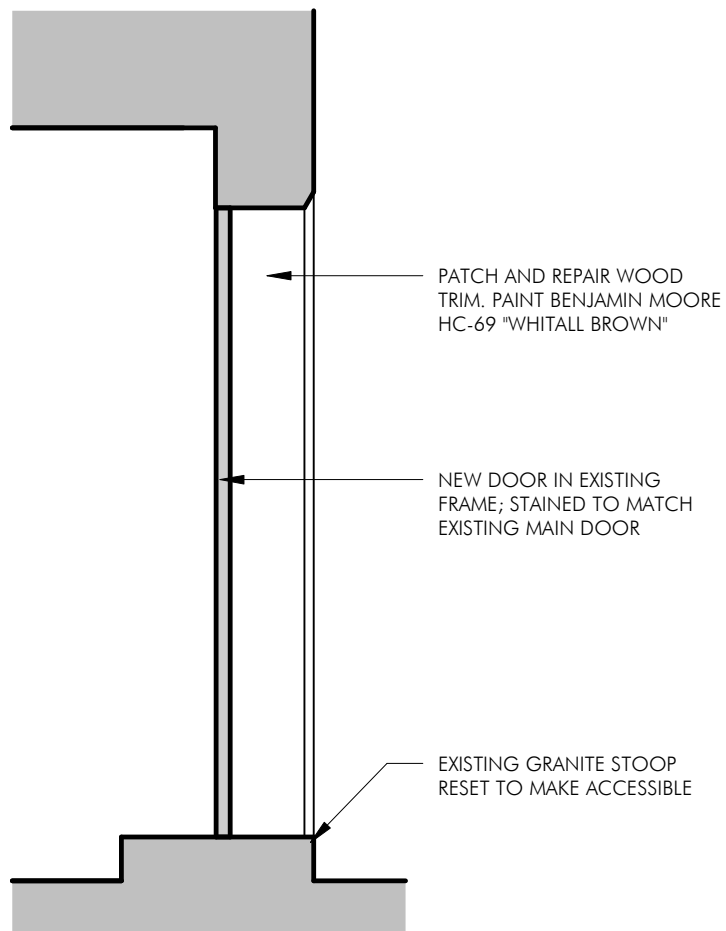


OC23 CLASSIC GRAY



HC69 WHITALLBROWN

BENJAMIN MOORE HISTORICAL COLORS



SECOND FRONT ENTRANCE SECTION



PATCH AND REPAIR
EXISTING CAST STONE.
PAINT BENJAMIN MOORE
HC-69 "WHITALL BROWN"



PROPOSED MAIL SLOT

PATCH AND REPAIR
WOOD TRIM.
PAINT BENJAMIN MOORE
HC-69 "WHITALL BROWN"



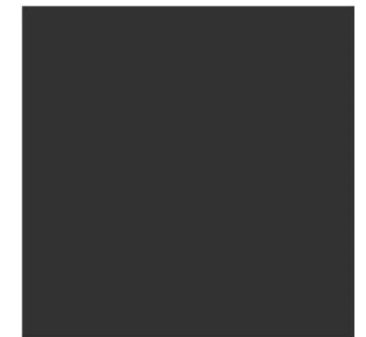
PROPOSED DEADBOLT AND KNOB

NEW DOOR IN
EXISTING FRAME;
STAINED TO MATCH
EXISTING MAIN DOOR.

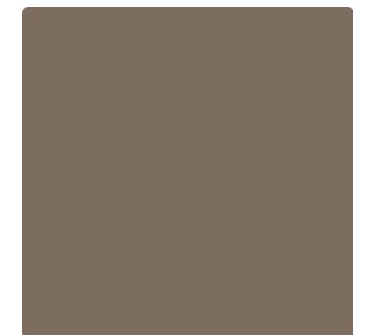


BALDWIN 5" HOUSE NUMBERS

EXISTING GRANITE STOOP
RESET TO MAKE ACCESSIBLE



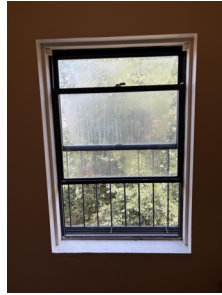
HC190 BLACK



HC69 WHITALLBROWN

BENJAMIN MOORE
HISTORICAL COLORS

5-1



5-2



5-3



5-4



4-1



4-2



4-3



4-4



3-1



3-2



3-3



3-4



2-1



2-2



2-3



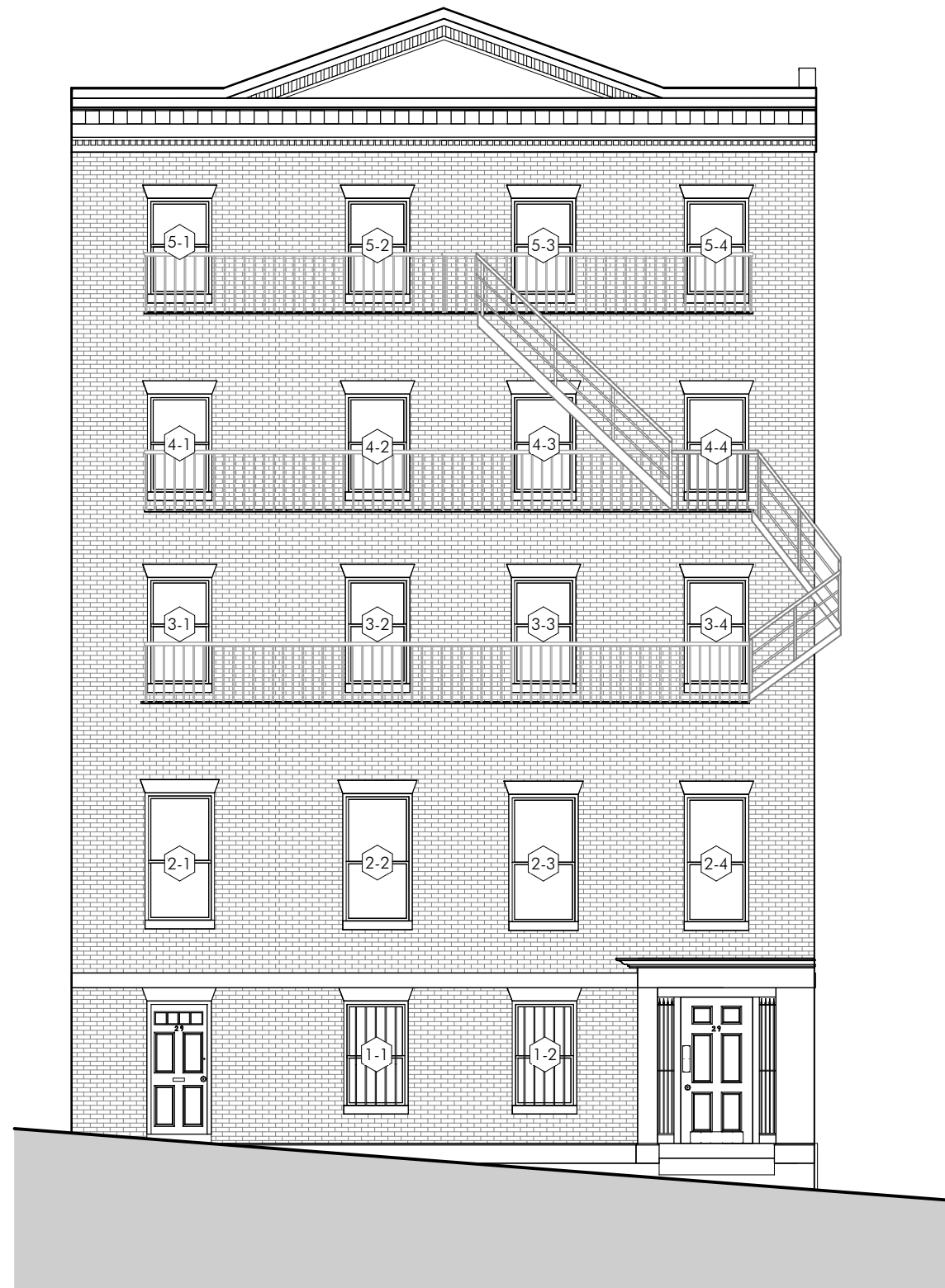
2-4



1-1



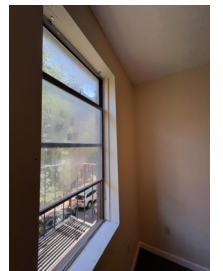
1-2



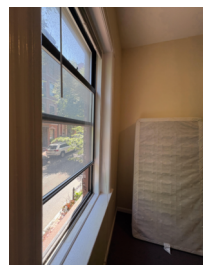
FIFTH FLOOR WINDOW DETAILS, TYP. FRONT FACADE



FOURTH FLOOR WINDOW DETAILS, TYP. FRONT FACADE



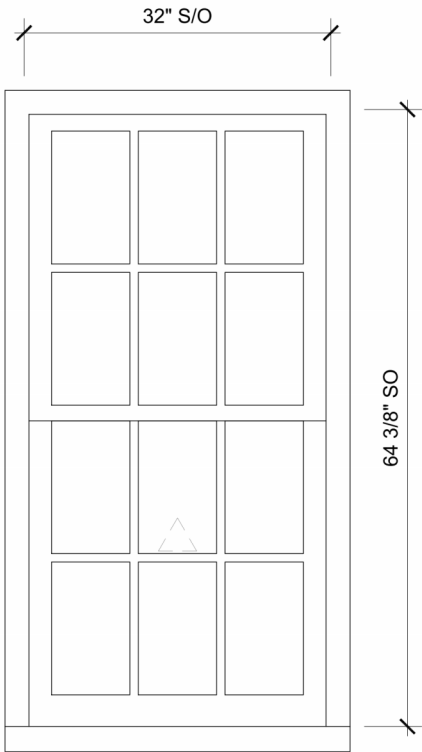
THIRD FLOOR WINDOW DETAILS, TYP. FRONT FACADE



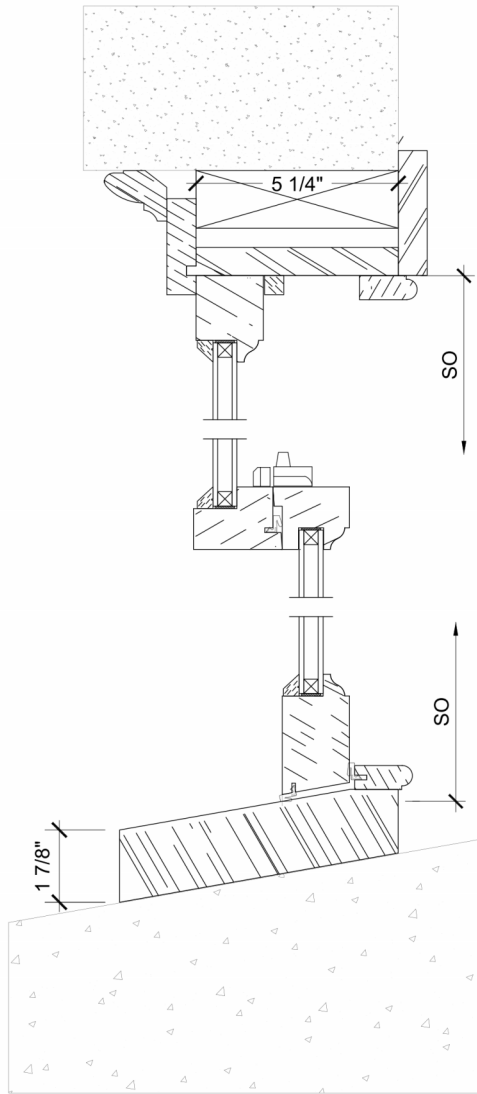
SECOND FLOOR WINDOW DETAILS, TYP. FRONT FACADE



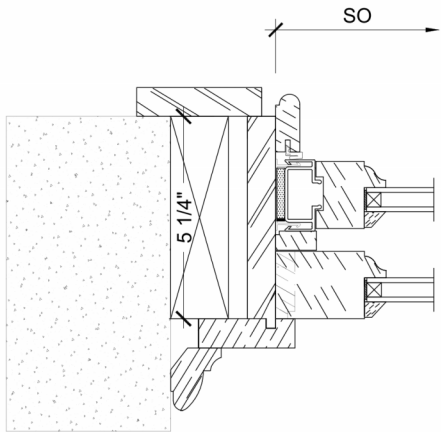
STREET LEVEL WINDOW DETAILS



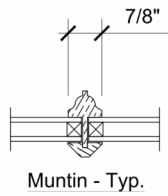
#1
SCALE: 3/4"=1'-0"



1 Head, Checkrail, & Sill
2
SCALE: 3" = 1'-0"



2 Jamb
2
SCALE: 3" = 1'-0"



DISTRIBUTOR:J.B. SASH AND DOOR
NUMBER:JBPB-Details.dwg DATE: 02/07/24
DRAWN:JLC REV DATE:

JB PROPER BOSTONIAN

SHEET
1
OF 2

DISTRIBUTOR:J.B. SASH AND DOOR
NUMBER:JBPB-Details.dwg DATE: 02/07/24
DRAWN:JLC REV DATE:

JB PROPER BOSTONIAN

SHEET
2
OF 2