



Boston Wastewater Epidemiology Report

Updated: 21-Aug-2025 | **Data Complete Through:** 17-Aug-2025

✉ wastewater@bphc.org



Boston Public
Health Commission

Report Contents



COVID-19 Summary

- Neighborhood Levels and Trends
- COVID-19 Citywide Overview and Trends
- BPHC Trend Overview by Neighborhood

Detailed Results

Results by Neighborhood

- Allston/Brighton
- Back Bay
- Charlestown
- Dorchester
- East Boston
- Hyde Park
- Jamaica Plain
- Mattapan
- Roslindale/West Roxbury
- Roxbury

Influenza & RSV

- Influenza Detections in Wastewater
- Influenza Trends in Wastewater by Neighborhood
- RSV Detections in Wastewater
- RSV Trends in Wastewater by Neighborhood

Additional Information

- COVID-19 Wastewater Level and Trend Category Definitions
- Recommendations and Resources by Level

Level: **Very High**

Level: **High**

Level: **Moderate**

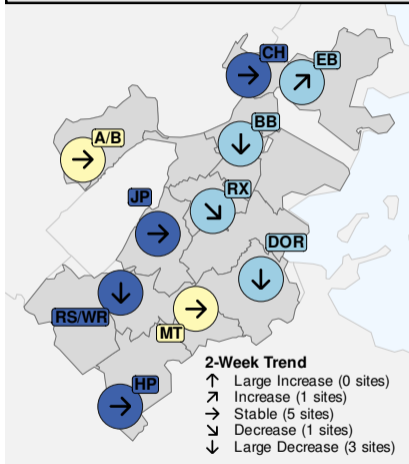
Level: **Low**

Level: **Very Low**

Neighborhood Levels and Trends



COVID-19 Wastewater Levels & Trends (17-Aug-2025)



BOSTON CITYWIDE COVID-19 LEVEL & TRENDS

COVID-19 LEVEL

Low

50 copies/mL
samples through 17-Aug-2025

2-WEEK TRENDS



Decrease
-37 copies/mL (-42%)

NEIGHBORHOOD SITES COVID-19 LEVEL & TRENDS

Level	Neighborhood/Site	Trend
Moderate	Mattapan (MT)	→ Stable
	Allston/Brighton (A/B)	→ Stable
Low	Back Bay (BB)	↓ Large Decrease
	Dorchester (DOR 2224)	↓ Large Decrease
	Roxbury (RX)	↘ Decrease
	East Boston (EB)	↗ Increase
Very Low	Jamaica Plain (JP)	→ Stable
	Charlestown (CH)	→ Stable
	Hyde Park (HP)	→ Stable
	Roslindale/West Roxbury (RS/WR)	↓ Large Decrease

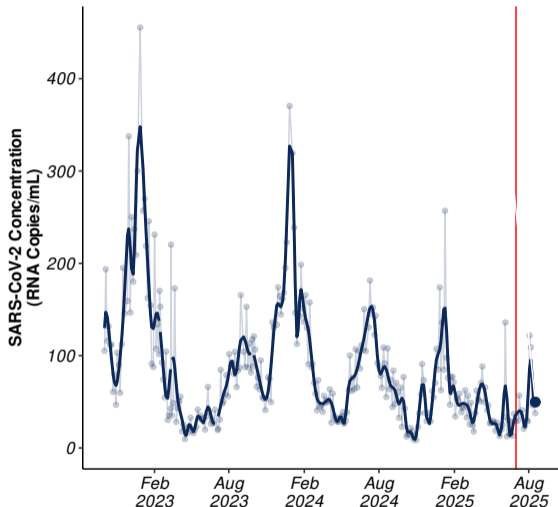
For additional details see:

- [Results by Neighborhood](#)
- [Detailed Neighborhood Levels and Trends Table](#)
- [Trend and Level Category Definitions](#)

COVID-19 Level (# sites)

Level	# sites
Very Low	4 sites
Low	4 sites
Moderate	2 sites
High	0 sites
Very High	0 sites

COVID-19 Citywide Overview and Trends



CITYWIDE
AVERAGE

50

RNA copies/mL

RANGE ACROSS 10
NEIGHBORHOOD SITES

9-91

RNA copies/mL

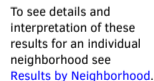
Data through: **17-Aug-2025**

2-WEEK TRENDS

Boston
Decreasing

-42%
over the past 14 days

Updated: 21-Aug-2025 | Samples through: 17-Aug-2025



Results by Neighborhood



- Allston-Brighton (A/B)
- Back Bay (BB)
- Charlestown (CH)
- Dorchester (DOR)
- East Boston (EB)
- Hyde Park (HP)
- Jamaica Plain (JP)
- Mattapan (MT)
- Roslindale/West Roxbury (RS/WR)
- Roxbury (RX)
- South Boston (SB)

Allston/Brighton

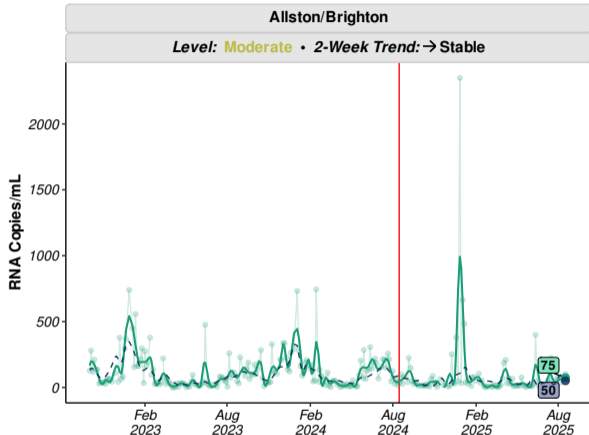


Level: **Moderate**

- Average value in **A/B** over the past week: **75** copies/mL.
- This value is **moderate** compared to past values and **similar** than the citywide average (**50** copies/mL).

Trend: → **Stable**

- Over the past two weeks, values in **A/B** are **stable**.
- Change compared to two weeks ago: **+15** copies/mL (**+25%**).



Updated: 21-Aug-2025 | Samples through: 17-Aug-2025 (A/B);

See [recommended actions and resources](#) based on levels and trends in this neighborhood.

Back Bay

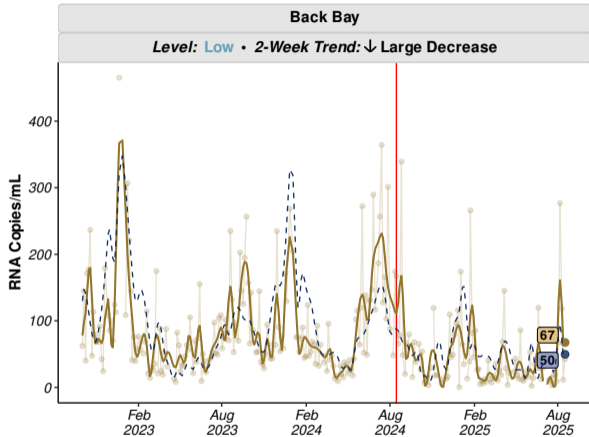


Level: **Low**

- Average value in **BB** over the past week: **67** copies/mL.
- This value is **low** compared to past values and **similar** than the citywide average (**50** copies/mL).

Trend: **↓ Large Decrease**

- Over the past two weeks, values in **BB** are **decreasing**.
- Change compared to two weeks ago: **-63** copies/mL (**-48%**).



Updated: 21-Aug-2025 | Samples through: 17-Aug-2025 (BB);

See [recommended actions and resources](#) based on levels and trends in this neighborhood.

Charlestown

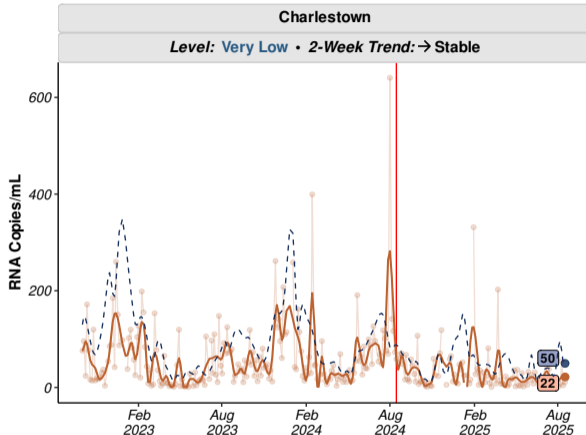


Level: **Very Low**

- Average value in **CH** over the past week: **22** copies/mL.
- This value is **very low** compared to past values and **similar** than the citywide average (**50** copies/mL).

Trend: → **Stable**

- Over the past two weeks, values in **CH** are **stable**.
- Change compared to two weeks ago: **+8** copies/mL (**+60%**).



Updated: 21-Aug-2025 | Samples through: 17-Aug-2025 (CH);

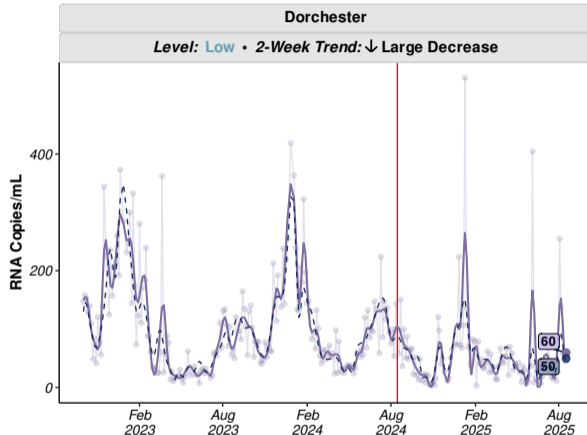
See [recommended actions and resources](#) based on levels and trends in this neighborhood.

Level: **Low**

- Average value in **DOR 2224** over the past week: **60** copies/mL.
- This value is **low** compared to past values and **similar** than the citywide average (**50** copies/mL).

Trend: **↓ Large Decrease**

- Over the past two weeks, values in **DOR 2224** are **decreasing**.
- Change compared to two weeks ago: **-79** copies/mL (**-57%**).



Updated: 21-Aug-2025 | Samples through: 17-Aug-2025 (DOR 2224);

See [recommended actions and resources](#) based on levels and trends in this neighborhood.

East Boston

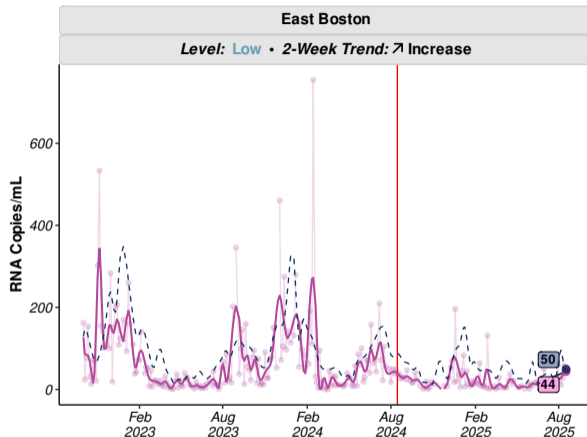


Level: **Low**

- Average value in **EB** over the past week: **44** copies/mL.
- This value is **low** compared to past values and **similar** than the citywide average (**50** copies/mL).

Trend: **↗ Increase**

- Over the past two weeks, values in **EB** are **increasing**.
- Change compared to two weeks ago: **+18** copies/mL (**+68%**).



Updated: 21-Aug-2025 | Samples through: 17-Aug-2025 (EB);

See [recommended actions and resources](#) based on levels and trends in this neighborhood.

Hyde Park

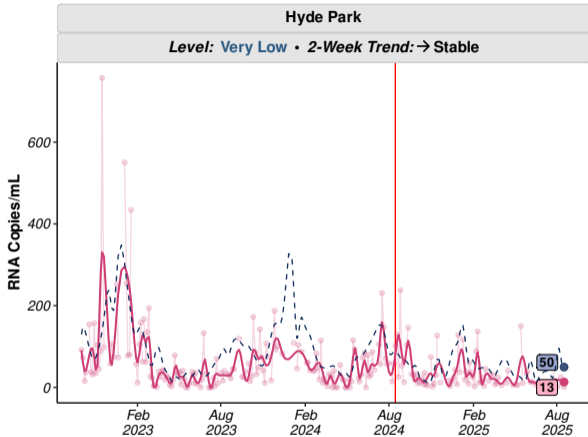


Level: **Very Low**

- Average value in **HP** over the past week: **13** copies/mL.
- This value is **very low** compared to past values and **similar** than the citywide average (**50** copies/mL).

Trend: → **Stable**

- Over the past two weeks, values in **HP** are **stable**.
- Change compared to two weeks ago: **-6** copies/mL (**-30%**).



Updated: 21-Aug-2025 | Samples through: 17-Aug-2025 (HP);

See [recommended actions and resources](#) based on levels and trends in this neighborhood.

Jamaica Plain

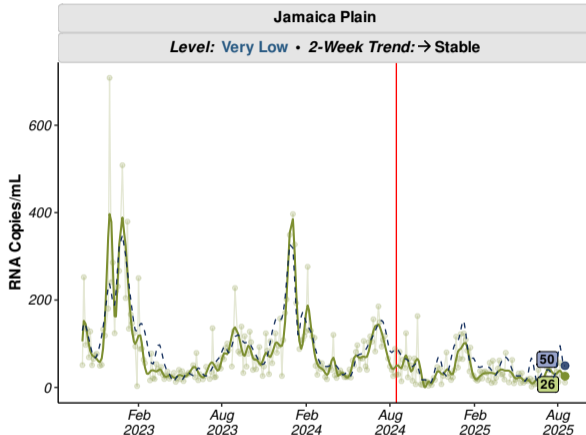


Level: **Very Low**

- Average value in **JP** over the past week: **26** copies/mL.
- This value is **very low** compared to past values and **similar** than the citywide average (**50** copies/mL).

Trend: → **Stable**

- Over the past two weeks, values in **JP** are **stable**.
- Change compared to two weeks ago: **-11** copies/mL (**-31%**).



Updated: 21-Aug-2025 | Samples through: 17-Aug-2025 (JP);

See [recommended actions and resources](#) based on levels and trends in this neighborhood.

Mattapan

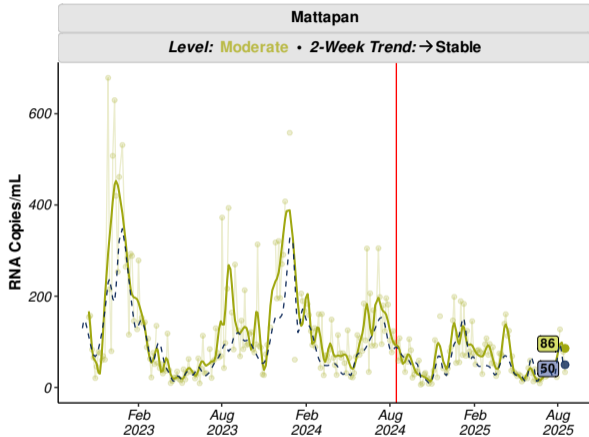


Level: **Moderate**

- Average value in **MT** over the past week: **86** copies/mL.
- This value is **moderate** compared to past values and **similar** than the citywide average (**50** copies/mL).

Trend: → **Stable**

- Over the past two weeks, values in **MT** are **stable**.
- Change compared to two weeks ago: **+2** copies/mL (**+3%**).



Updated: 21-Aug-2025 | Samples through: 17-Aug-2025 (MT);

See [recommended actions and resources](#) based on levels and trends in this neighborhood.

Roslindale/West Roxbury

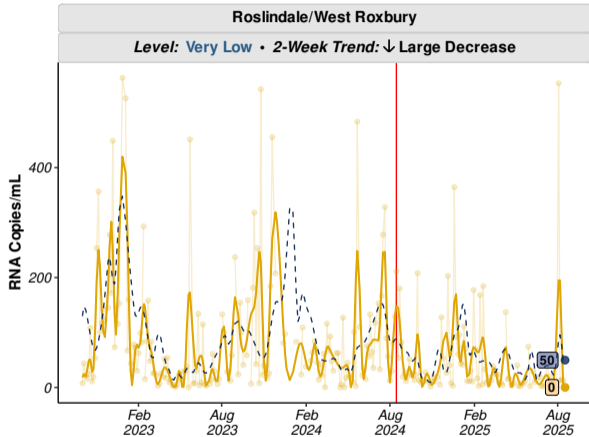


Level: **Very Low**

- Average value in **RS/WR** over the past week: **0** copies/mL.
- This value is **very low** compared to past values and **similar** than the citywide average (**50** copies/mL).

Trend: **↓ Large Decrease**

- Over the past two weeks, values in **RS/WR** are **decreasing**.
- Change compared to two weeks ago: **-194** copies/mL (**-99%**).



Updated: 21-Aug-2025 | Samples through: 17-Aug-2025 (RS/WR);

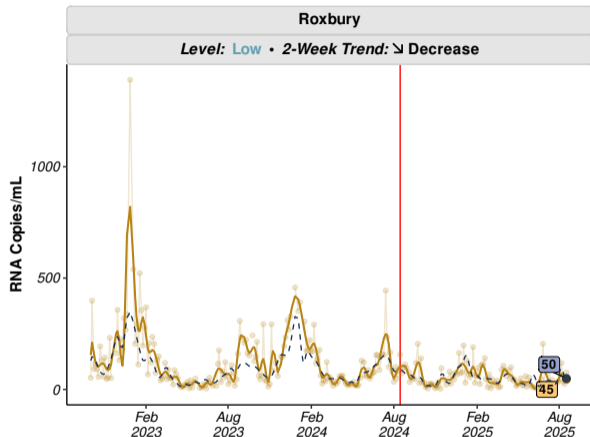
See [recommended actions and resources](#) based on levels and trends in this neighborhood.

Level: **Low**

- Average value in **RX** over the past week: **45** copies/mL.
- This value is **low** compared to past values and **similar** than the citywide average (**50** copies/mL).

Trend: **Decrease**

- Over the past two weeks, values in **RX** are **decreasing**.
- Change compared to two weeks ago: **-19** copies/mL (**-30%**).



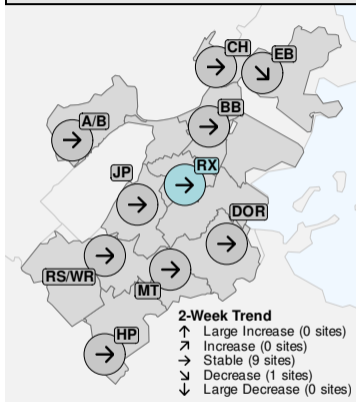
Updated: 21-Aug-2025 | Samples through: 17-Aug-2025 (RX);

See [recommended actions and resources](#) based on levels and trends in this neighborhood.

Influenza Detections in Wastewater

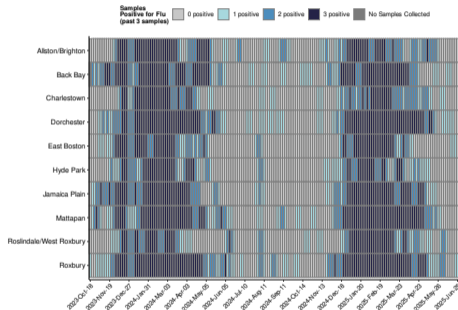


Influenza Wastewater Detections & Trends (29-Jun-2025)



Samples Positive for Flu (Past 3 Samples)

9 sites	1 sites	0 sites	0 sites	0 sites
0 positive	1 positive	2 positive	3 positive	No Samples Collected

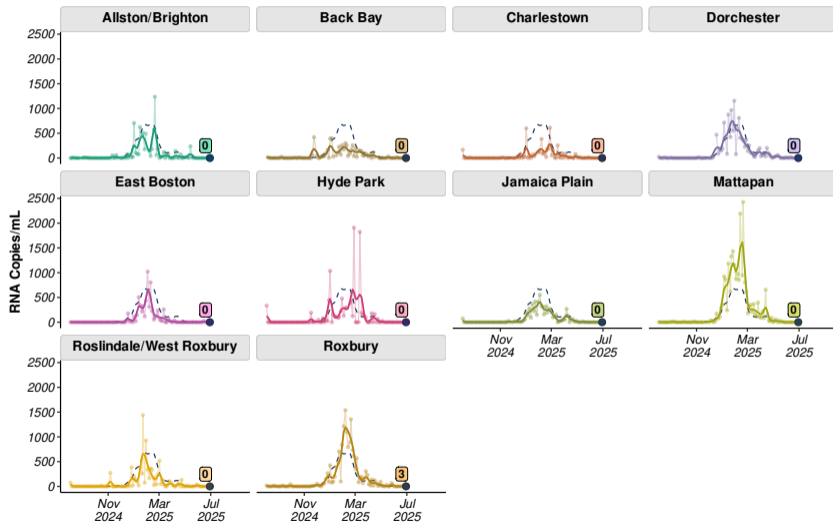


This map depicts the number of times influenza virus was detected in wastewater at the 3 most-recent samples (approximately the past week) at each of the neighborhood sampling locations.

Influenza Trends in Wastewater by Neighborhood



Influenza Trends in Wastewater



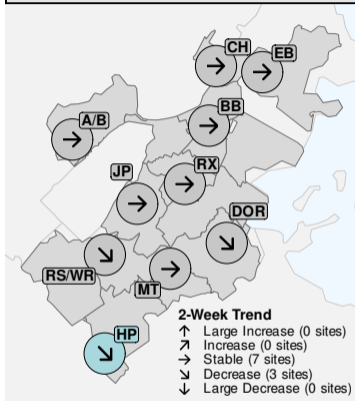
For each neighborhood, colored line and textbox shows the smoothed trend and most recent value in that neighborhood;

The dotted blue line in each panel shows the trend and most recent value across **all Boston sites** weighted by population.

RSV Detections in Wastewater



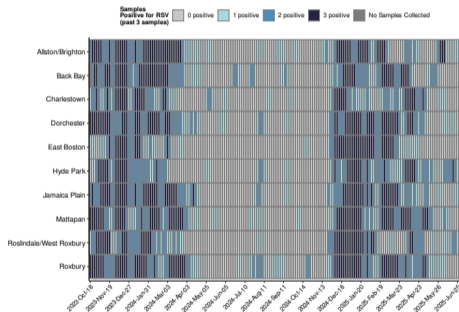
RSV Wastewater Detections & Trends (29-Jun-2025)



Samples Positive for RSV (Past 3 Samples)

9 sites	1 sites	0 sites	0 sites	0 sites
0 positive	1 positive	2 positive	3 positive	No Samples Collected

RSV = Respiratory Syncytial Virus



This map depicts the number of times RSV was detected in wastewater at the 3 most-recent samples (approximately the past week) at each of the neighborhood sampling locations.

RSV Trends in Wastewater by Neighborhood



For each neighborhood, colored line and textbox shows the smoothed trend and most recent value in that neighborhood;

The dotted blue line in each panel shows the trend and most recent value across **all Boston sites** weighted by population.

COVID-19 Wastewater Level and Trend Category Definitions



Concentration Levels

Concentration Level	Concentration Value (Copies/mL)
Very High	>540
High	405-540
Moderate	270-405
Low	135-270
Very Low	≤135

2-Week Trend Categories

Trend Category		Trend Value (Copies/mL)
↑	Large Increase	>+175
↗	Increase	+50 to +175
→	Stable	-50 to +50
↘	Decrease	-175 to -50
↓	Large Decrease	≤-175

Level: **Very High**



Wastewater viral levels in your neighborhood indicate **very high risk** of COVID-19 infection.

Based on this level, BPHC urgently recommends the following practices to prevent COVID-19 in your community:

- Wear a [high-quality mask or respirator](#)
- If you are at [high risk of getting very sick](#), consider limiting non-essential indoor activities in public where you could be exposed.
- If you have close contact with someone at [high risk of getting very sick](#), consider self-testing to detect infection before contact, and consider wearing a high-quality mask when indoors with them
- Stay up-to-date on [vaccinations](#).
- Recognize the [symptoms](#) of COVID-19 and seek testing and possible treatment if you get sick
- Stay home when sick and avoid contact with others who are sick
- Improve [indoor airflow and ventilation](#)
- Wash your hands often and cover coughs and sneezes
- Follow CDC recommendations for [preventing spread](#) if you have COVID-19

RESOURCES

- Find a [vaccination clinic](#) in your neighborhood
- Pick up a [free at-home test kit](#) in your neighborhood
- Find [treatment](#) for COVID-19 including [free telehealth](#) and [in home treatment](#)
- Call or visit the [Mayor's Health Line](#)
- Learn more about COVID-19 and find additional resources: [COVID-19 in Boston](#)

Level: High



Wastewater viral levels in your neighborhood indicate **high risk** of COVID-19 infection.

Based on this level, BPHC strongly recommends the following practices to prevent COVID-19 in your community:

- Wear a [high-quality mask or respirator](#)
- If you have close contact with someone at [high risk of getting very sick](#), consider self-testing to detect infection before contact, and consider wearing a high-quality mask when indoors with them
- Stay up-to-date on [vaccinations](#).
- Recognize the [symptoms](#) of COVID-19 and seek testing and possible treatment if you get sick
- Stay home when sick and avoid contact with others who are sick
- Improve [indoor airflow and ventilation](#)
- Wash your hands often and cover coughs and sneezes
- Follow CDC recommendations for [preventing spread](#) if you have COVID-19

RESOURCES

- Find a [vaccination clinic](#) in your neighborhood
- Pick up a [free at-home test kit](#) in your neighborhood
- Find [treatment](#) for COVID-19 including [free telehealth](#) and [in home treatment](#)
- Call or visit the [Mayor's Health Line](#)
- Learn more about COVID-19 and find additional resources: [COVID-19 in Boston](#)

Level: **Moderate**



Wastewater viral levels in your neighborhood indicate **moderate risk** of COVID-19 infection.

Based on this level, BPHC recommends the following practices to prevent COVID-19 in your community:

- If you are at [high risk of getting very sick](#), wear a [high-quality mask or respirator](#) in public indoor spaces
- If you have close contact with someone at [high risk of getting very sick](#), consider self-testing to detect infection before contact, and consider wearing a high-quality mask when indoors with them
- Stay up-to-date on [vaccinations](#).
- Recognize the [symptoms](#) of COVID-19 and seek testing and possible treatment if you get sick
- Stay home when sick and avoid contact with others who are sick
- Improve [indoor airflow and ventilation](#)
- Wash your hands often and cover coughs and sneezes
- Follow CDC recommendations for [preventing spread](#) if you have COVID-19

RESOURCES

- Find a [vaccination clinic](#) in your neighborhood
- Pick up a [free at-home test kit](#) in your neighborhood
- Find [treatment](#) for COVID-19 including [free telehealth](#) and [in home treatment](#)
- Call or visit the [Mayor's Health Line](#)
- Learn more about COVID-19 and find additional resources: [COVID-19 in Boston](#)



Wastewater viral levels in your neighborhood indicate **low risk** of COVID-19 infection.

Based on this level, BPHC recommends the following practices to prevent COVID-19 in your community:

- **Continue to monitor wastewater levels and trends**
- Stay up-to-date on [vaccinations](#).
- Recognize the [symptoms](#) of COVID-19 and seek testing and possible treatment if you get sick
- Stay home when sick and avoid contact with others who are sick
- Improve [indoor airflow and ventilation](#)
- Wash your hands often and cover coughs and sneezes
- Follow CDC recommendations for [preventing spread](#) if you have COVID-19

RESOURCES

- Find a [vaccination clinic](#) in your neighborhood
- Pick up a [free at-home test kit](#) in your neighborhood
- Find [treatment](#) for COVID-19 including [free telehealth](#) and [in home treatment](#)
- Call or visit the [Mayor's Health Line](#)
- Learn more about COVID-19 and find additional resources: [COVID-19 in Boston](#)

Level: **Very Low**



Wastewater viral levels in your neighborhood indicate **very low risk** of COVID-19 infection.

Based on this level, BPHC recommends the following practices to prevent COVID-19 in your community:

- **Continue to monitor wastewater levels and trends**
- Stay up-to-date on [vaccinations](#).
- Recognize the [symptoms](#) of COVID-19 and seek testing and possible treatment if you get sick
- Stay home when sick and avoid contact with others who are sick
- Improve [indoor airflow and ventilation](#)
- Wash your hands often and cover coughs and sneezes
- Follow CDC recommendations for [preventing spread](#) if you have COVID-19

RESOURCES

- Find a [vaccination clinic](#) in your neighborhood
- Pick up a [free at-home test kit](#) in your neighborhood
- Find [treatment](#) for COVID-19 including [free telehealth](#) and [in home treatment](#)
- Call or visit the [Mayor's Health Line](#)
- Learn more about COVID-19 and find additional resources: [COVID-19 in Boston](#)