



ARCHITECT  
**RODE**

535 Albany Street | 405  
Boston, Massachusetts 02118  
617.422.0090 | T  
rodearchitects.com

TEAM

**INTERIORS**  
HAM INTERIORS  
1-4 The Sheds, Dairy Lane, Hambleden,  
Henley-on-Thames, Oxfordshire, RG9  
3AS978.499.4301  
01491 579371| T  
www.haminteriors.com

**MEP**  
BLW ENGINEERS, INC.  
311 Great Road  
Littleton, MA 01460  
978.499.4301 | T  
www.blwengineers.com

OWNER

VARLEY CLOTHING INC.  
Ben Mead  
860 S. Los Angeles St, Suite 513,  
Los Angeles, CA, 90014

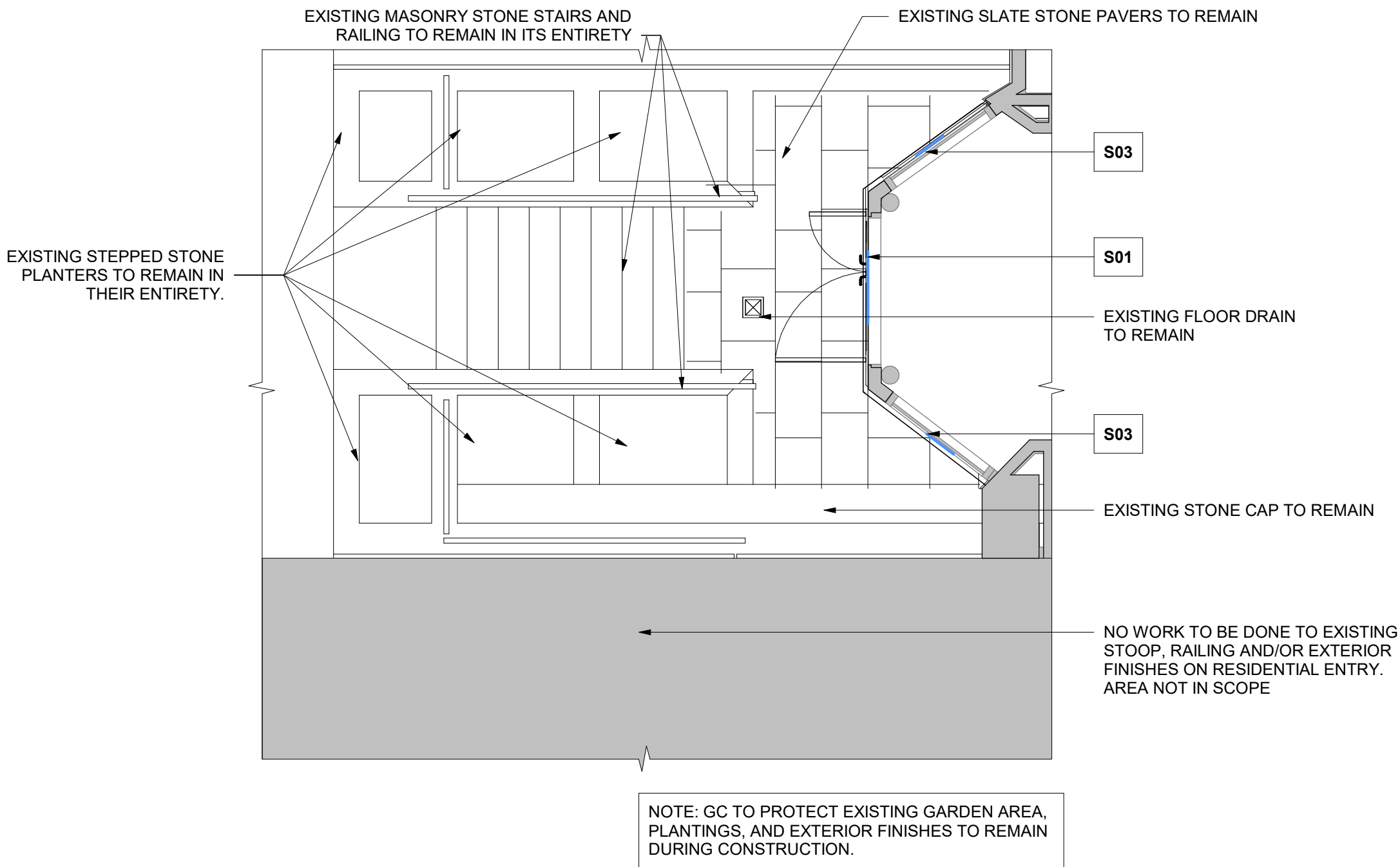
PERMIT

**VARLEY CLOTHING INC.**  
154 Newbury Street, Boston MA 02116

05/30/2025



Sign name	Advertisement type	Height	Width	Depth	Height from the ground to the centre of advertisement	Max projection of the advertisement from the face of the building (metres)	Reference Image
S01 (QTY-1)	MAIN FACADE FIXED LOGO	90MM (3 9/16")	715MM (2'-4 5/32")	20MM(5/8)	2815MM (9'-3 13/16")APPROX 20MM DEEP LETTERING FIXED FLUSH TO STONE FACADE WITH VINYL BACKER	20MM (5/8) DEEP NON-ILLUMINATED LETTERING	
S02 (QTY-1)	EXTERNALLY FIXED DOOR LOGO - MAIN ENTRANCE	145MM (5 23/32")	255MM (10 1/32")	6MM(1/4)	1535MM (5'-0 7/16") APPROX 10-20MM DEPENDING ON INTERNAL FIXING METHOD	10-20MM (3/8-5/8) DEPENDING ON INTERNAL FIXING METHOD	
S03 (QTY-4)	EXTERNALLY FIXED WINDOW SIGNAGE	65MM (2 9/16")	340MM(1'-1 25/64)	6MM(1/4)	1220MM (4'-0 1/32) APPROX	10-20MM(3/8 -5/8) DEPENDING ON INTERNAL FIXING METHOD	



1 ENLARGED PLAN - GARDEN LEVEL ENTRY  
1/4" = 1'-0"

PLEASE NOTE:

GC TO ENSURE STABILITY AND SUITABILITY FOR ALL ASPECTS OF THE CONSTRUCTION FOR HEALTH AND SAFETY. USING SUITABLE FIXTURES AND FITTINGS THROUGHOUT - PLEASE SPEAK WITH HAM INTERIORS BEFORE ORDERING/INSTALLING.

EXTERIOR PAINTED FARROW & BALL SHADOW WHITE. BUT INTERIOR FRAME FINISH TO BE FIRED BISCUIT TO MATCH INTERIOR.

ALL ARCHITECTURAL DIMENSIONS SHOWN ARE BASED ON EXISTING SURVEY. ALL DIMENSIONS TO BE CONFIRME DON SITE PRIOR TO CONSTRUCTION.

KEY

SIGNAGE LOCATIONS

PERMIT

NOT FOR CONSTRUCTION

**RODE**

535 Albany Street | 405  
Boston, MA 02118  
617.422.0090 | T  
rodearchitects.com

Design Team

**INTERIORS**  
HAM INTERIORS  
1-4 The Sheds, Dairy Lane, Hambleden,  
Henley-on-Thames, Oxfordshire, RG9  
3AS978.499.4301  
01491 579371| T  
www.haminteriors.com

**MEP**  
BLW ENGINEERS, INC.  
311 Great Road  
Littleton, MA 01460  
978.499.4301 | T  
www.blwengineers.com



**VARLEY CLOTHING INC.**

154 Newbury Street, Boston MA 02116

Ben Mead

860 S. Los Angeles St,  
Suite 513, LA, CA,  
90014

PROJECT: 2515

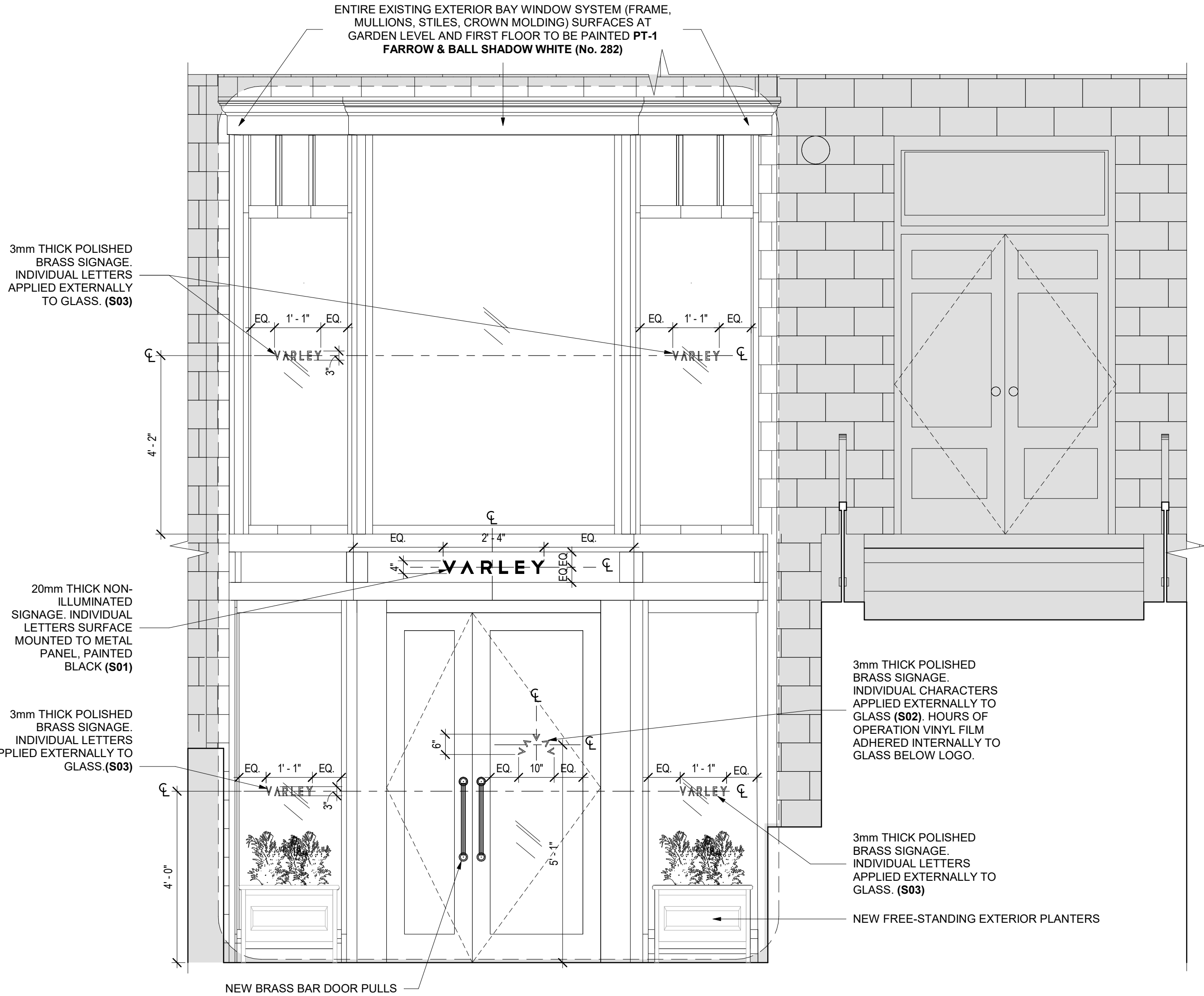
No.	Description	Date

DATE: 05/30/2025

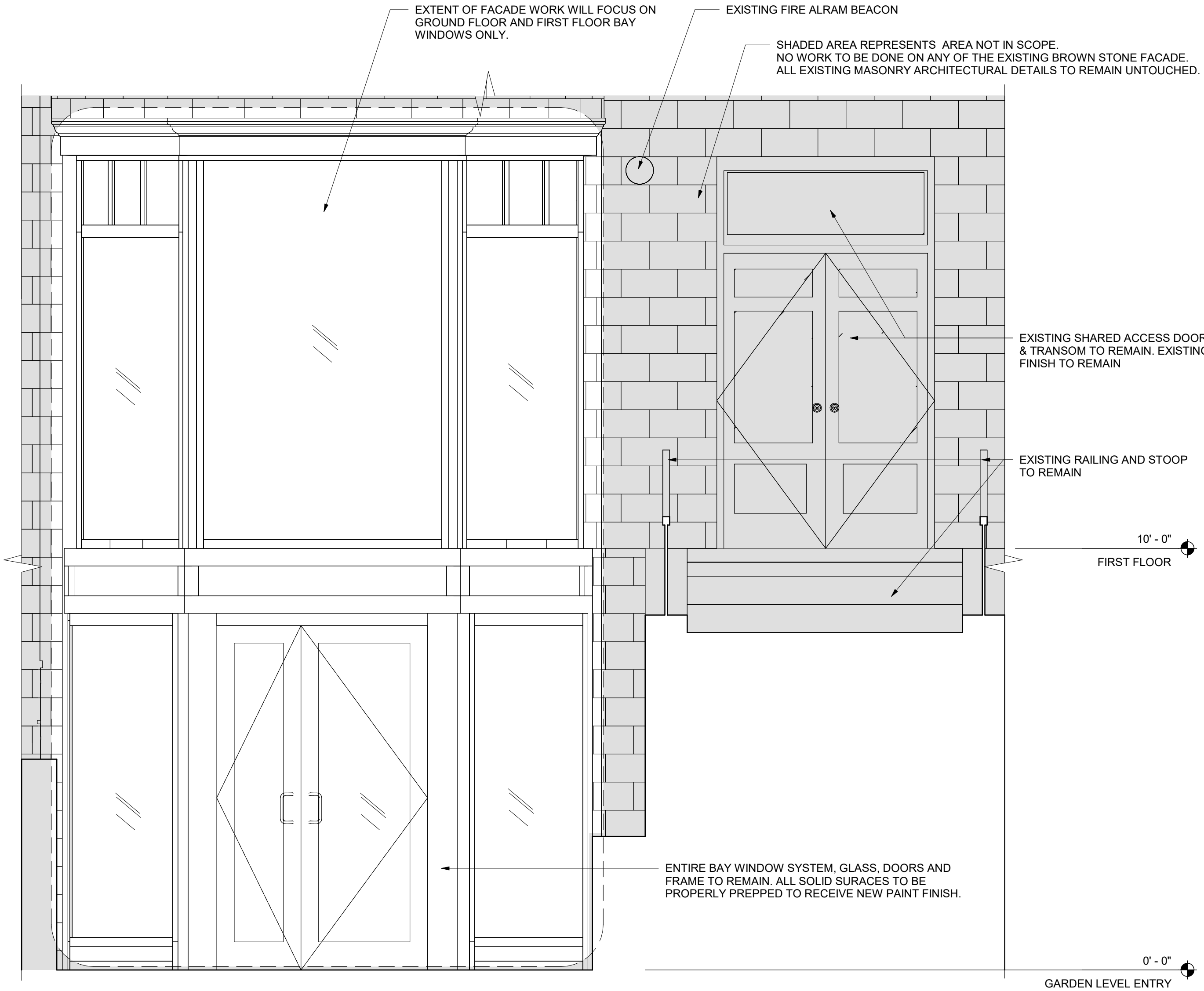
SCALE: As indicated

**EXISTING/PROPOSED  
FACADE PLAN &  
ELEVATIONS**

**A-820**



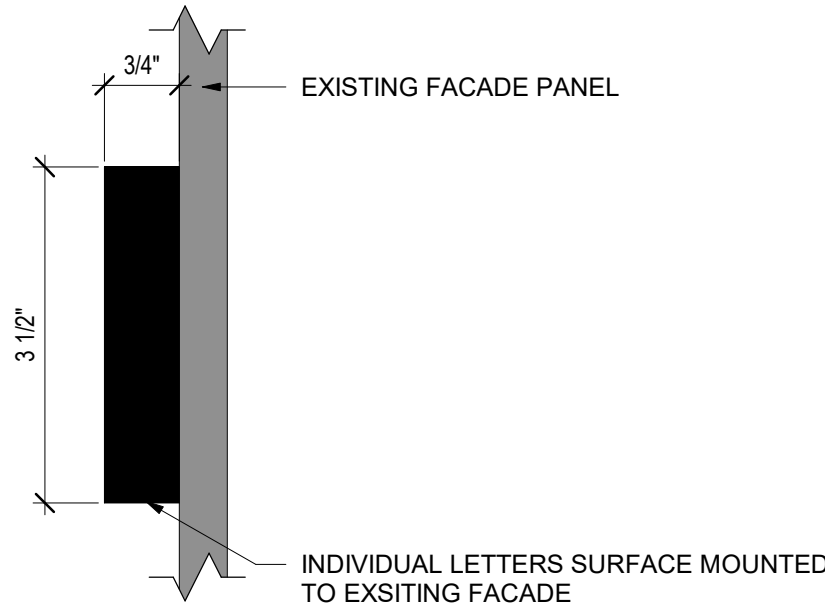
2 ELEVATION - PROPOSED STOREFRONT  
1/2" = 1'-0"



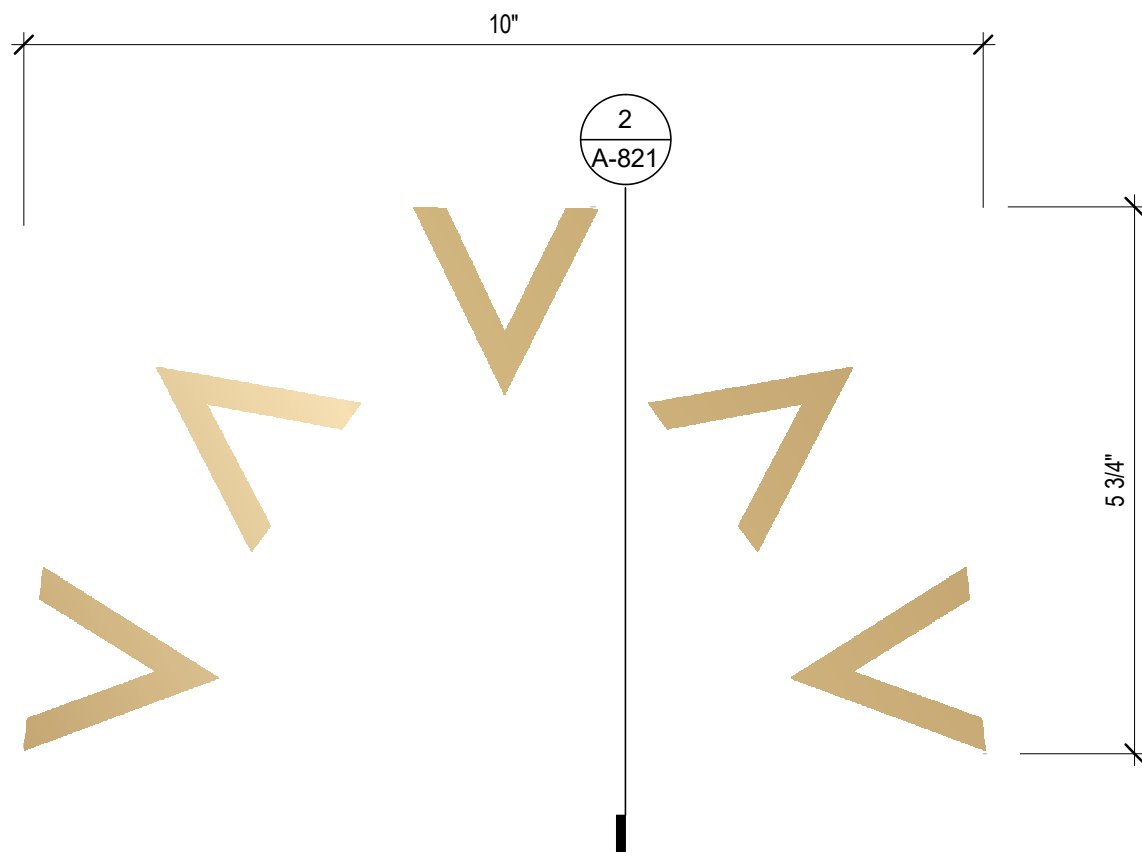
3 ELEVATION - EXISTING STOREFRONT  
1/2" = 1'-0"



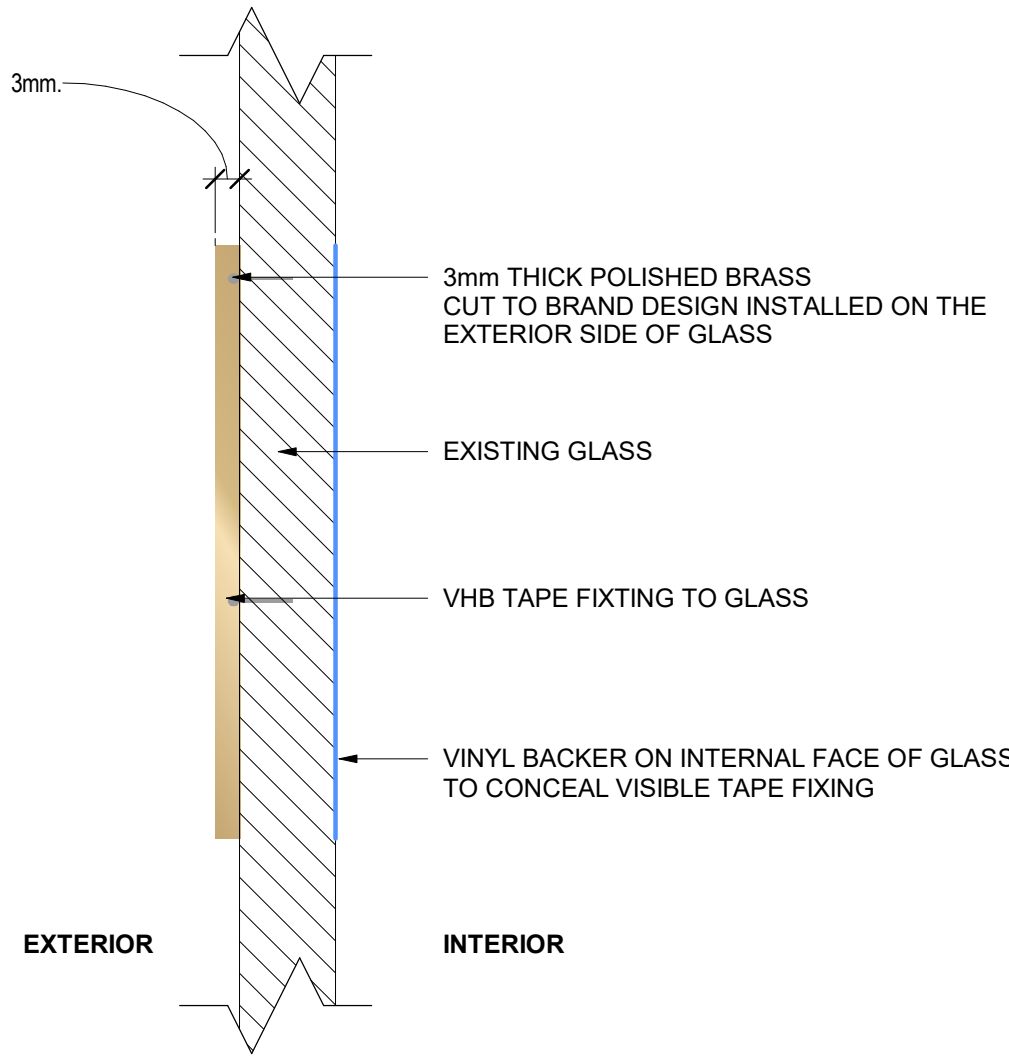
S01 S01 MAIN FACADE LOGO (QTY-1)  
3' = 1'-0"



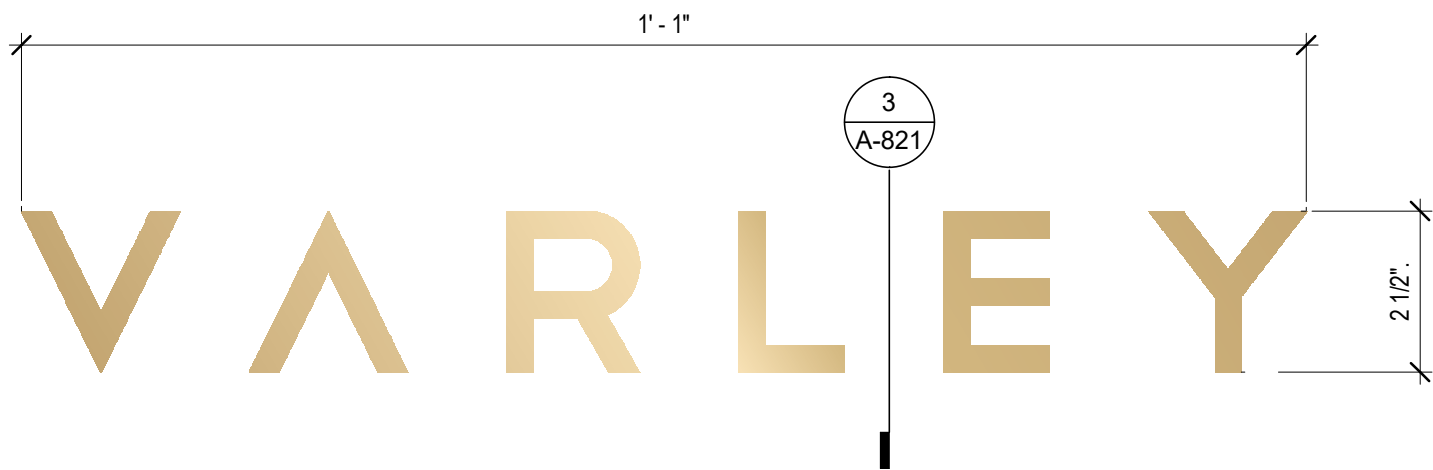
1 S01 - SIDE VIEW  
6" = 1'-0"



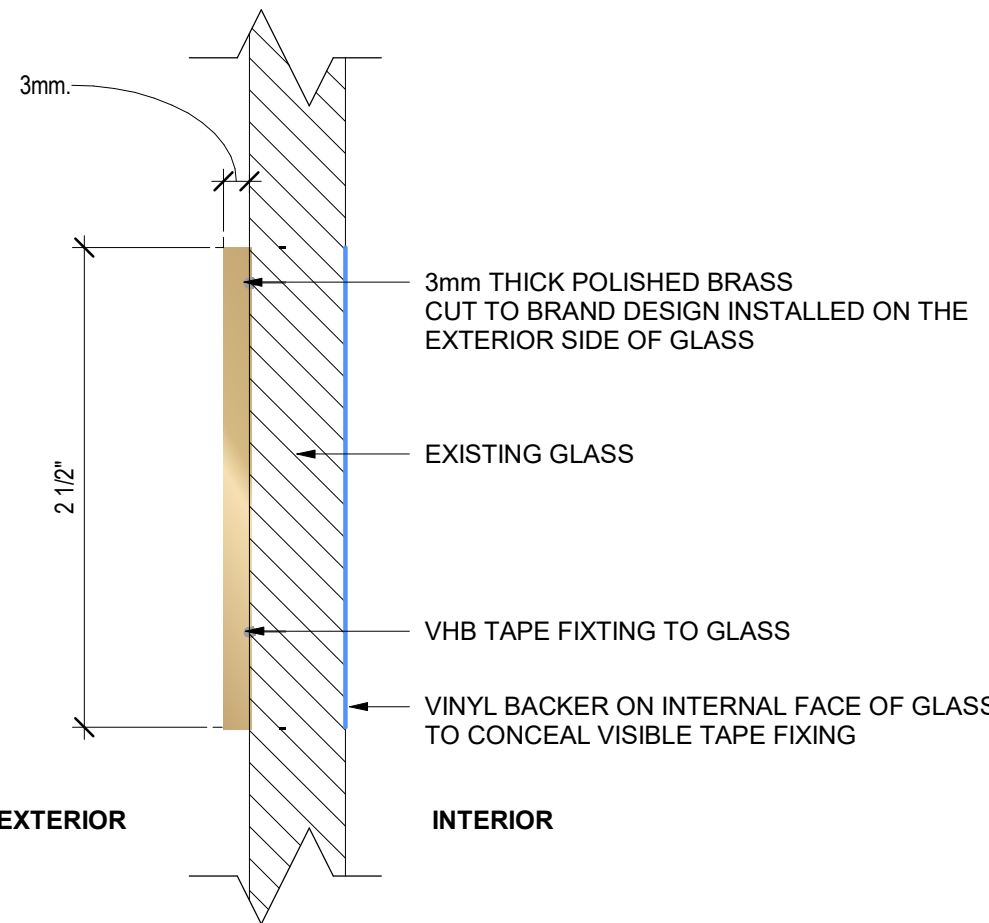
S02 S02 DOOR LOGO (QTY-1)  
6" = 1'-0"



2 S02 - SIDE VIEW  
12" = 1'-0"



S03 S03 WINDOW LOGO (QTY-4)  
6" = 1'-0"



3 S03 - SIDE VIEW  
12" = 1'-0"



PERMIT  
NOT FOR  
CONSTRUCTION

**RODE**

535 Albany Street | 405  
Boston, MA 02118  
617.422.0090 | T  
rodearchitects.com

**Design Team**

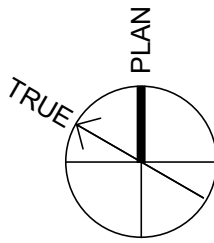
**INTERIORS**  
HAM INTERIORS  
1-4 The Sheds, Dairy Lane, Hambleden,  
Henley-on-Thames, Oxfordshire, RG9  
3AS978.499.4301  
01491 579371 | T  
www.haminteriors.com

**MEP**  
BLW ENGINEERS, INC.  
311 Great Road  
Littleton, MA 01460  
978.499.4301 | T  
www.blwengineers.com



**VARLEY CLOTHING INC.**  
154 Newbury Street, Boston MA 02116

Ben Mead  
860 S. Los Angeles St,  
Suite 513, LA, CA,  
90014



PROJECT: 2515

No.	Description	Date

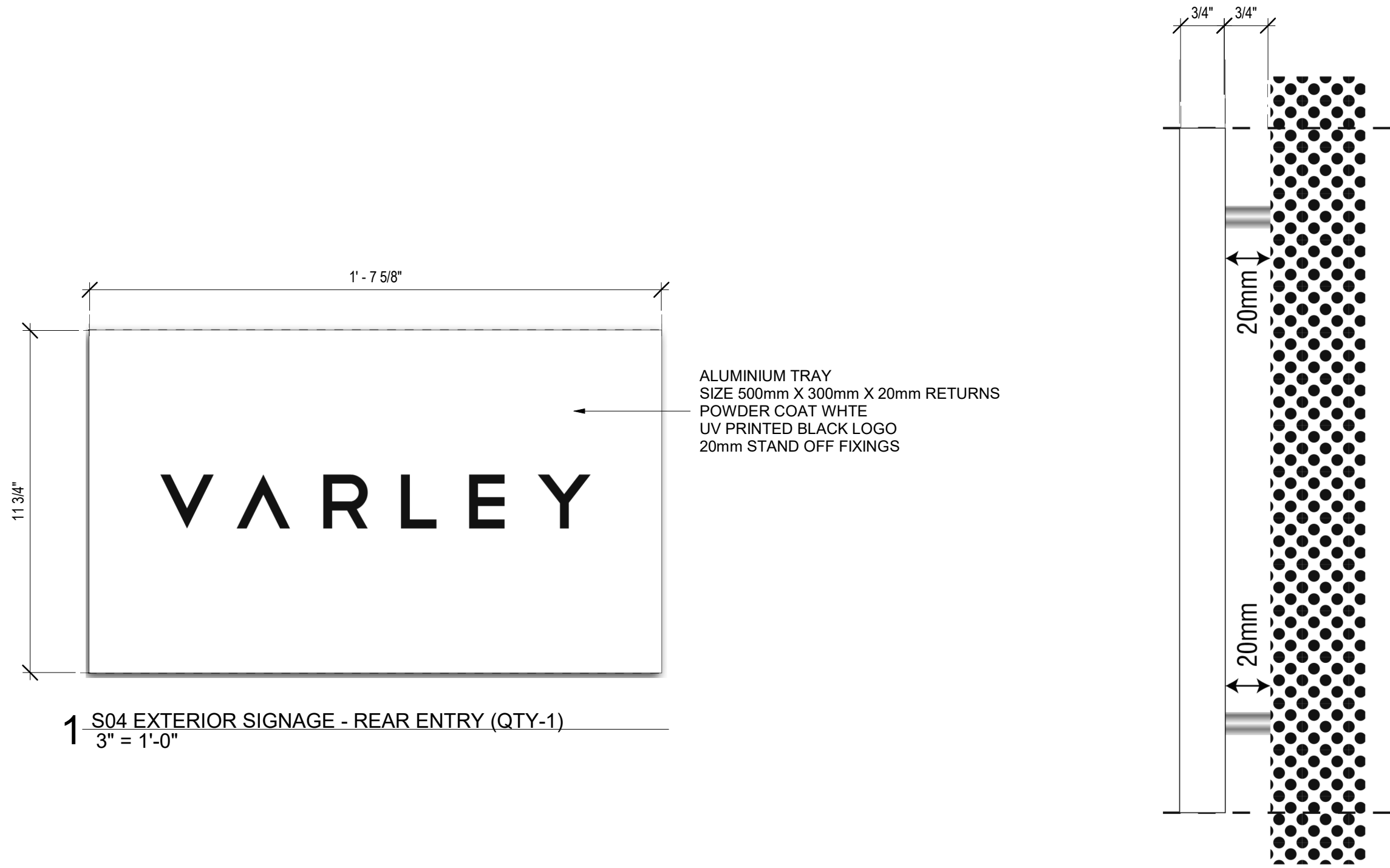
DATE: 05/30/2025

SCALE: As indicated

**SIGNAGE DETAILS -  
FRONT ENTRY**

**A-821**





1 S04 EXTERIOR SIGNAGE - REAR ENTRY (QTY-1)  
3" = 1'-0"

2 S04 - EXTERIOR SIGNAGE SECTION - REAR ENTRY  
6" = 1'-0"



3 S04 EXTERIOR SIGNAGE - REAR ENTRY IMAGE  
N.T.S.



4 S05 GROUND LEVEL LIFT LOBBY SIGNAGE (QTY-1)  
6" = 1'-0"

Reference



5 S05 GROUND LEVEL LIFT LOBBY SIGNAGE IMAGE  
N.T.S.

PERMIT  
NOT FOR  
CONSTRUCTION

RODE

535 Albany Street | 405  
Boston, MA 02118  
617.422.0090 | T  
rodearchitects.com

Design Team

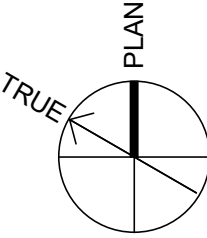
INTERIORS  
HAM INTERIORS  
1-4 The Sheds, Dairy Lane, Hambleden,  
Henley-on-Thames, Oxfordshire, RG9  
3AS978.499.4301  
01491 579371 | T  
www.haminteriors.com

MEP  
BLW ENGINEERS, INC.  
311 Great Road  
Littleton, MA 01460  
978.499.4301 | T  
www.blwengineers.com



VARLEY CLOTHING INC.  
154 Newbury Street, Boston MA 02116

Ben Mead  
860 S. Los Angeles St,  
Suite 513, LA, CA,  
90014



PROJECT: 2515

No.	Description	Date

DATE: 05/30/2025

SCALE: As indicated

SIGNAGE DEAILS - REAR  
ENTRY

A-823