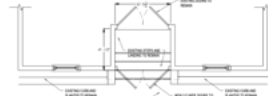








EXISTING ENTRY PLAN
SCALE: 1/4" = 1'-0"



PROPOSED ENTRY PLAN
SCALE: 1/4" = 1'-0"



EXISTING FRONT ELEVATION
SCALE: 1/4" = 1'-0"



PROPOSED FRONT ELEVATION
SCALE: 1/4" = 1'-0"



PROPOSED FIR OR MAHOGANY
MAIN ENTRY DOOR

SCOPE OF WORK:
Install new doors as shown.



PROPOSED FRONT ELEVATION
SCALE: 1/4" = 1'-0"

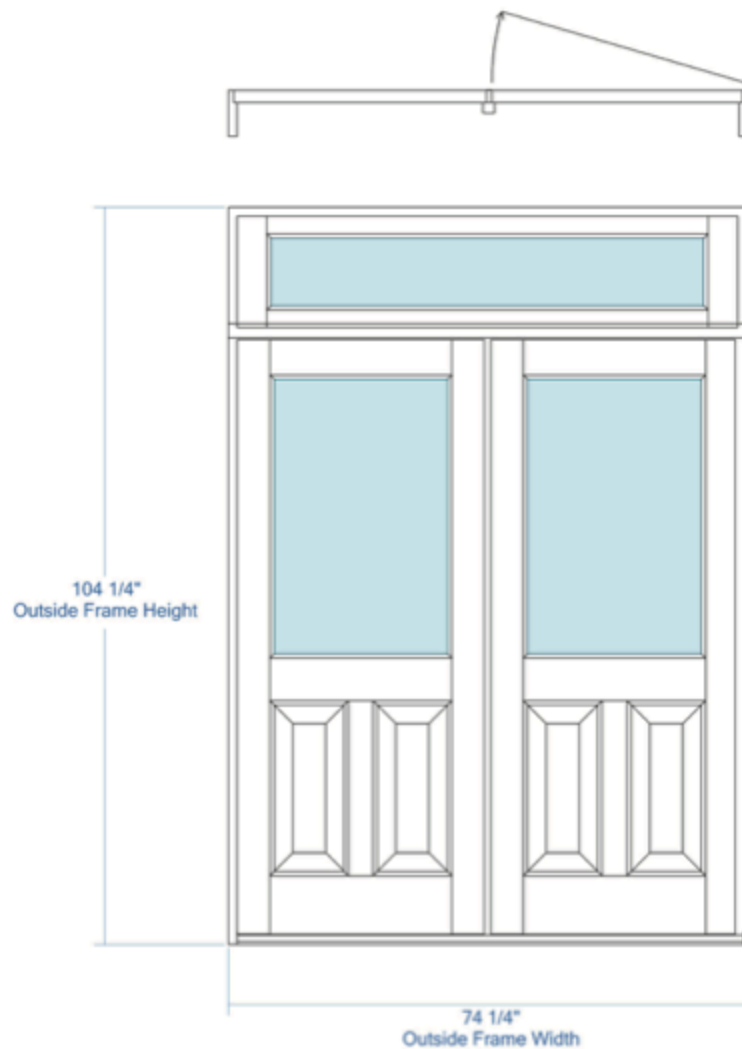
Project		14 RUTLAND STREET BOSTON, MA 02118	
Client		A1 - EXISTING AND PROPOSED PLANS	
Architect		I.S. Hernandez Services INC.	
Address		14 Rutland Street Boston, MA 02118 www.ishernandez.com	
Phone		TEL: (617) 333-8527	
Fax			
Email			
Date		AUG 14, 2018	
Revision			
Sheet		A-1 of 1	
Scale			
Notes			



14 Rutland Str., Boston, MA 02118

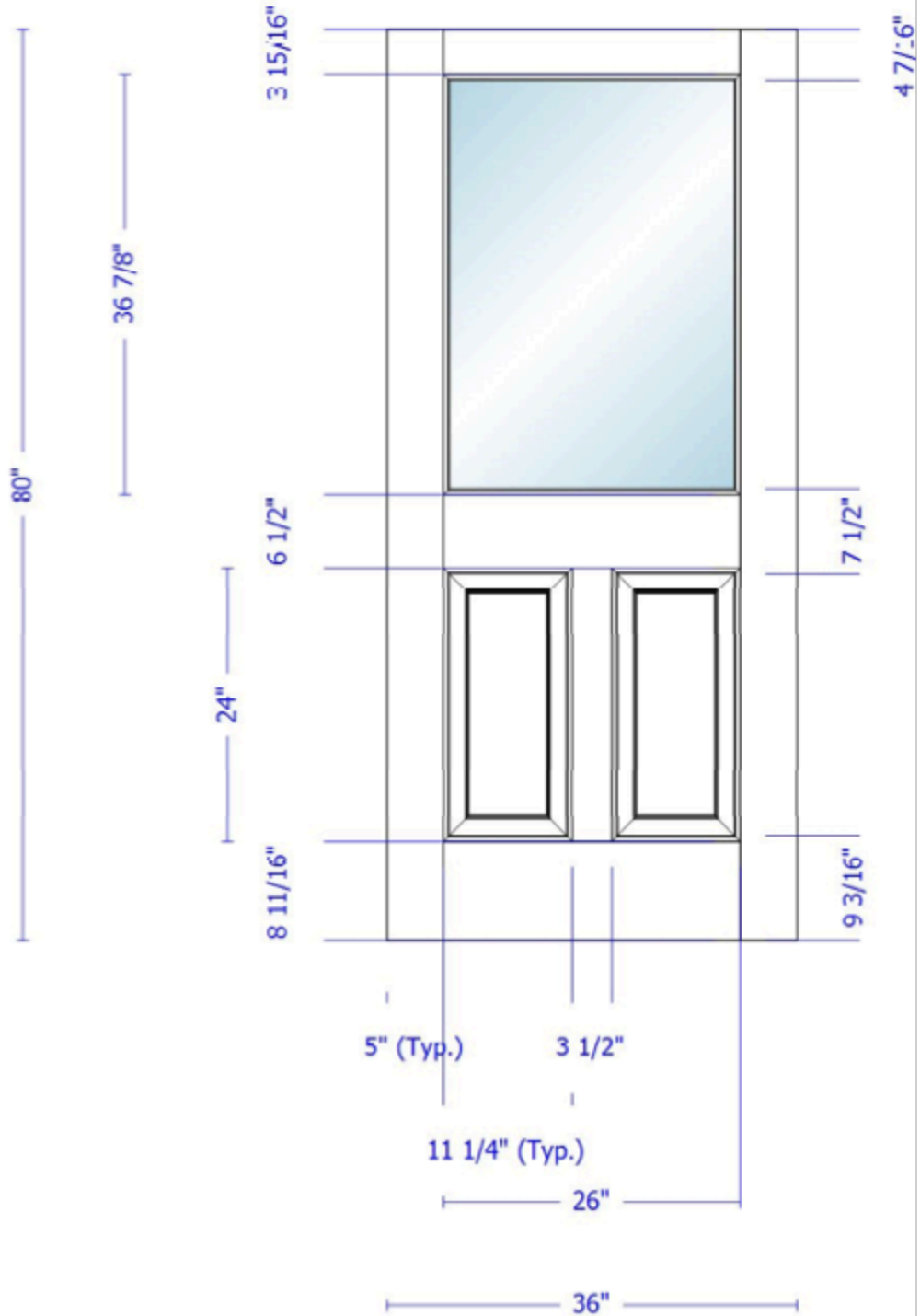
TruStile Doors, LLC
1111 E. 71st Ave.
Denver, CO. 80229
www.trustile.com

Entry Door Details



Door Style	Sticking	Panel	Material	Glass / Insert	Product Type
PL200	CB	E	Douglas Fir (Vertical Grain)	3/4" Insulated Unit	Entry System

14 Rutland Str., Boston, MA 02118

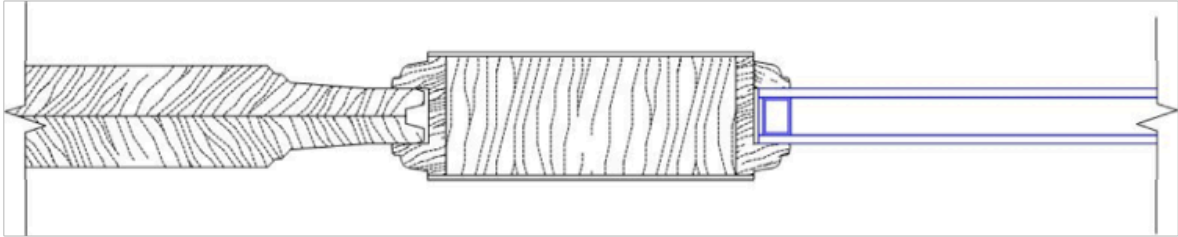


14 Rutland Str, Boston, MA 02118



Vertical grain fir Honey natural finish

14 Rutland Str, Boston, Ma 02118



QUOTE #: P6543754-500-1
QUOTE VALID THROUGH: 6/15/2025

6360 Craftsman Four Panel-One Lite

SERIES: Craftsman Collection
DOOR DESIGN: 6360
QUANTITY: 1

DOOR SPECIFICATIONS

SPECIES: Fir
WOOD GRADE: Select
WIDTH: 3'-0"
HEIGHT: 6'-8"
THICKNESS: 1 3/4"
PROFILE: Ovolo Sticking
GLASS: Clear / Clear
PANEL: 1-7/16" Innerbond DHRP
ADDITIONAL OPTIONS:
UltraBlock® Technology
Solid Bottom Rail
Cartoned



Approved _____

Date _____



CERTIFIED DOOR QUOTE

P - Unnamed Quote

Jonathan James
BROSCO - Wilmington

QUOTE #: P6543754-500-2
QUOTE VALID THROUGH: 6/15/2025

6360 Craftsman Four Panel-One Lite

SERIES: Craftsman Collection
DOOR DESIGN: 6360
QUANTITY: 1

DOOR SPECIFICATIONS

SPECIES: Fir
WOOD GRADE: Select
WIDTH: 3'-0"
HEIGHT: 6'-8"
THICKNESS: 1 3/4"
PROFILE: Ovolo Sticking
GLASS: Clear / Clear
PANEL: 1-7/16" Innerbond DHRP
ADDITIONAL OPTIONS:
UltraBlock® Technology
Solid Bottom Rail
Cartoned



Approved _____

Date _____

SIMPSONDOOR.COM

1.800.SIMPSON

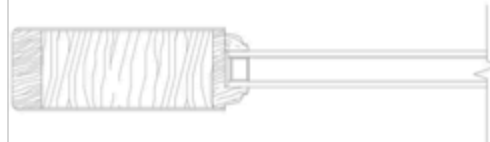
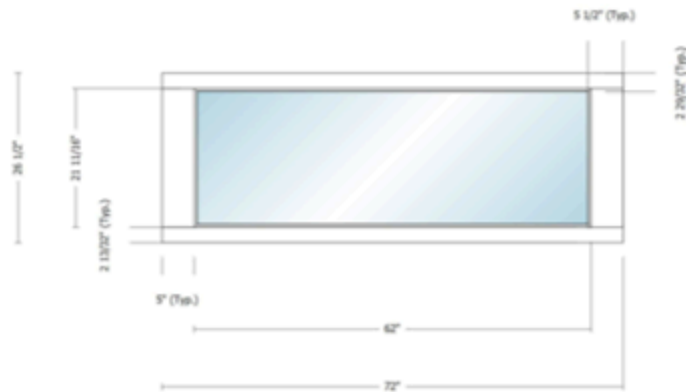
QUOTE #: P6543754-500-3
QUOTE VALID THROUGH: 6/15/2025

7751 Transom

SERIES: Exterior French & Sash Doors
DOOR DESIGN: 7751
QUANTITY: 1

DOOR SPECIFICATIONS

SPECIES: Fir
WOOD GRADE: Select
WIDTH: 6'-0"
HEIGHT: 2'-2 1/2"
THICKNESS: 1 3/4"
PROFILE: Ovolo Sticking
GLASS: Clear / Clear
ADDITIONAL OPTIONS:
Cartoned



Approved _____

Date _____

0017 LETTER BOX PLATE

DECORATIVE MAIL SLOT EXTERIOR PIECE



5020 KNOB
PAIR WITH ANY ROSE OR ESCUTCHEON PLATE



SPE

LOCK

STYLE

KNOB DIAMETER	2.125
PROJECTION	2.25
MAXIMUM DOOR THICKNESS	1.75
MINIMUM DOOR THICKNESS	1.375
PRODUCT WIDTH	2.125
PRODUCT HEIGHT	2.125

18761 Da Vinci • Lake Forest • California • 82810 • 1.800.566.1986 • BaldwinHardware.com • 613883S •

TRADITIONAL
ROUND DEADBOLT



SPE

LOCK
STYLE
LOCK

PROJECTION	1-7/16
MAXIMUM DOOR THICKNESS	2
MINIMUM DOOR THICKNESS	1.75
PARTIAL MODEL	SC.TRD.190
ENTRY NUMBER OF CYLINDERS	1.0
INTERIOR LOCKING TYPE	Turn Piece

18761 Da Vinci • Lake Forest • California • 82810 • 1.800.566.1986 • BaldwinHardware.com • 613883S •

Rutland TH-1 Safety Concerns and Precedent

To whom it may concern,

This document serves as a statement of our motivation for modifying the entryway to the townhome at 14 Rutland st, TH-1. Due to our location within the neighborhood, the fact that there are no neighbors directly across from our home, and the layout of the entryway (covered and obscured from public view), we have had many incidents of crime including:

- Vandalism/property damage
- Theft
- Illegal drug use (and discarding of drug paraphernalia)
- Public urination/defecation
- Loitering (including violent loitering where police had to be called to remove individuals from the property)
- Attempted breaking & entering

These incidents happen very often and have been increasing in frequency (for example, there was a **2 week period where we had to call D4 3 separate times** to deal with unsafe situations) reducing the safety of this home for my family. As a way to protect ourselves from potential harm, we are asking that we be granted the ability to build a similar protected entryway to our home to what exists at multiple homes in our direct vicinity (please see below for documentation on the precedent-setting homes in a one block radius of our home).

We also have photos and videos from our ring camera to document examples of particular instances of crime, vandalism, drug use, defecation/urination, as well as multiple attempted entries into our home from strangers. We can make these available upon request, but do not wish to share them openly unless needed.

Our family has lived in this neighborhood for over a decade and do not wish to leave, but these safety concerns are deteriorating our quality of life and have increased dramatically in recent years. We are asking for the ability to enhance the safety and security of our home in a way that keeps with the character of the neighborhood.

Thank you,

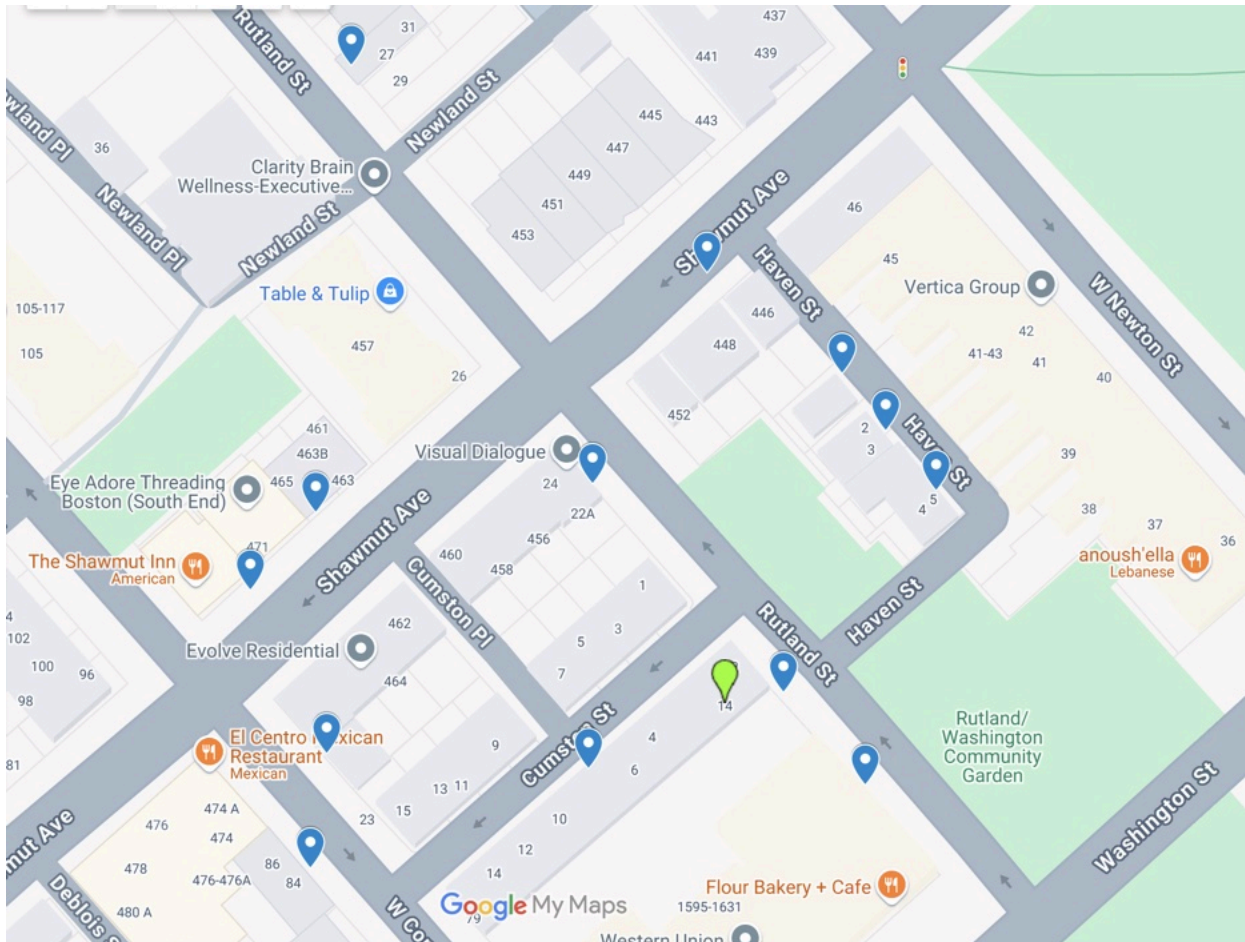
Nathan and Theresa Roy

(continue for precedent)

Nearby Precedent for Vestibule

This portion of the document shows all of the precedent-setting entryways in the immediate vicinity (i.e., within just a 1 block radius) of 14 Rutland St TH-1. There are multiple, more intrusive to public ways, examples on Rutland, Shawmut, and Haven St and this document will show locations and pictures of the entryways.

This is a map showing the nearby buildings with similar entryways. For reference, the property under review is the green pin and the blue pins represent the homes with entryways which generally open outwards onto the sidewalk. ([interactive map here](#))



Interactive map with pictures of the [Precedent for vestibule](#).

This document will focus on the homes which have entryways which open onto the sidewalk more or similarly to our requested entryway.

22 Rutland St



Our direct neighbor at 22 Rutland st has a gate which opens fully into the sidewalk. They also have a gate for the parking spot which opens directly onto the sidewalk (and fully obstructing it).

27 Rutland St



This home has a full-width door that opens onto the sidewalk, obstructing more than our proposed doors. This entryway was redone in the past 2 years.

446-448 Shawmut ave



These two homes have doors which open directly onto the street with a similar obstruction to what we are proposing. 448 Shawmut also opens into a fenced-off tree, narrowing the pedestrian sidewalk in front (making their entry more obstructive than our proposal).

1597 Washington St



1597 Washington St has 3 full-size doors, which open fully onto the sidewalk of Rutland St. The two on the left are for the stairwells and the door on the right is for employee access to Flour/the garage.

Cumston townhouse/1597 Washington St parking access



This iron gate is attached directly to our townhouse where we are requesting the new entryway. It opens fully into the sidewalk with larger obstruction than our proposal.

5 Haven St



This home has a door which opens fully onto the sidewalk (more than our proposal) and a step directly in the sidewalk as well.

3 Haven St



Very similar to 5 Haven St, door opens fully onto the sidewalk.

1 Haven St garden gate



This gate also opens directly across the entire sidewalk

467 Shawmut Ave



This door appears to open directly onto Shawmut as well.