

Desired Historic Markers Commemorating Boston Children's Hospital First Two Locations

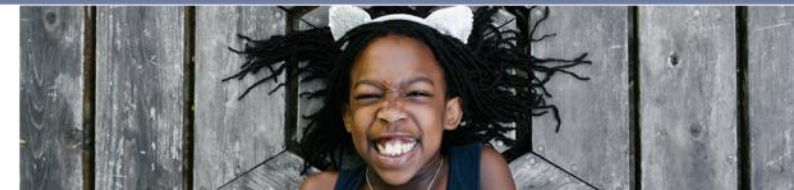


Boston Children's

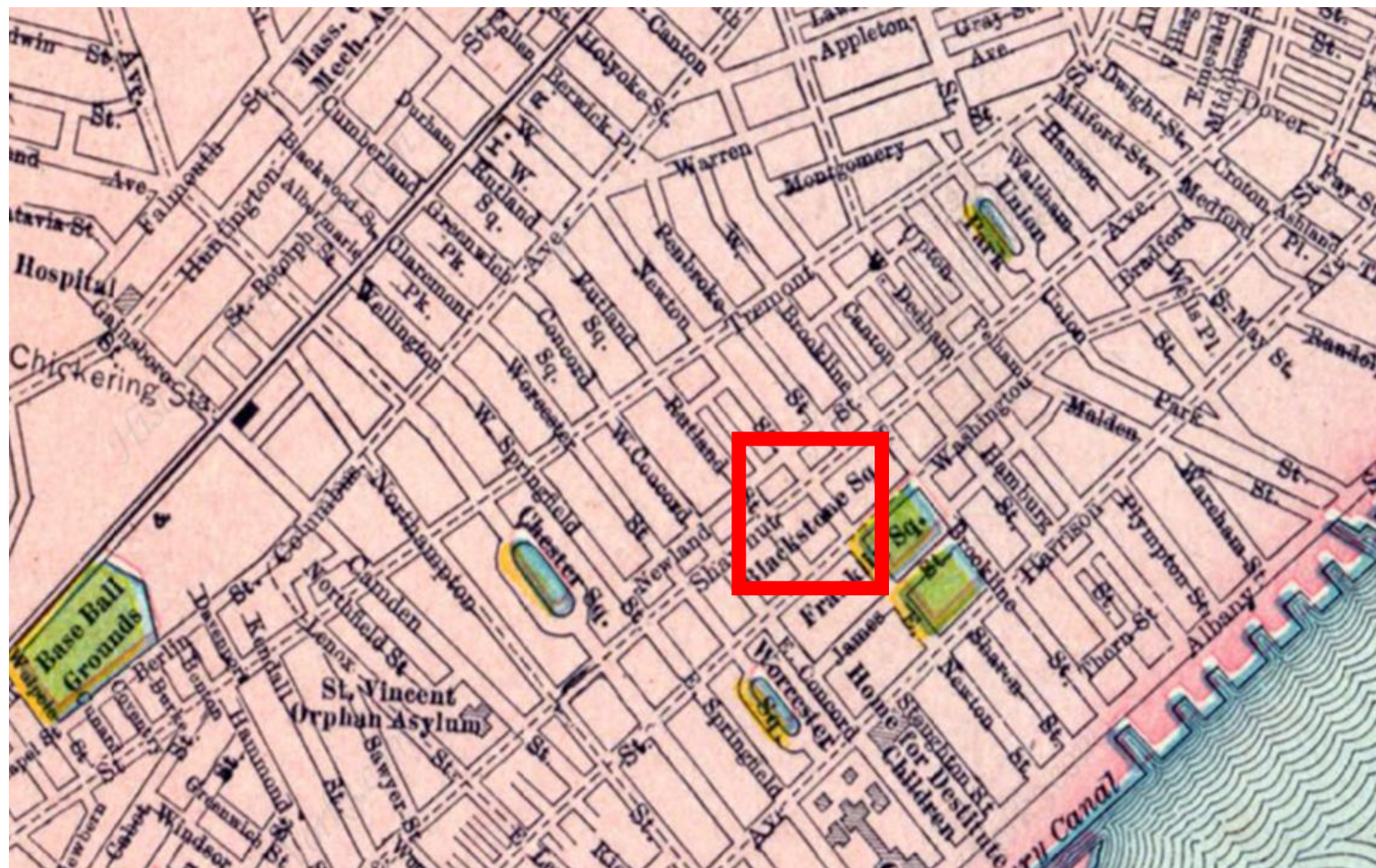
Where the world comes for answers



Historic Locations
9 Rutland Street
1429 Washington Street



Historic Rutland & Washington Street Locations



Boston Children's Hospital would like to commemorate the locations where the institution was located when it was first established with the installation of two historic plaques at these former sites.

The hospital was formed as a charitable institution to provide medical care to children in need and initially opened in the summer of 1869 at 9 Rutland Street in Boston's South End.

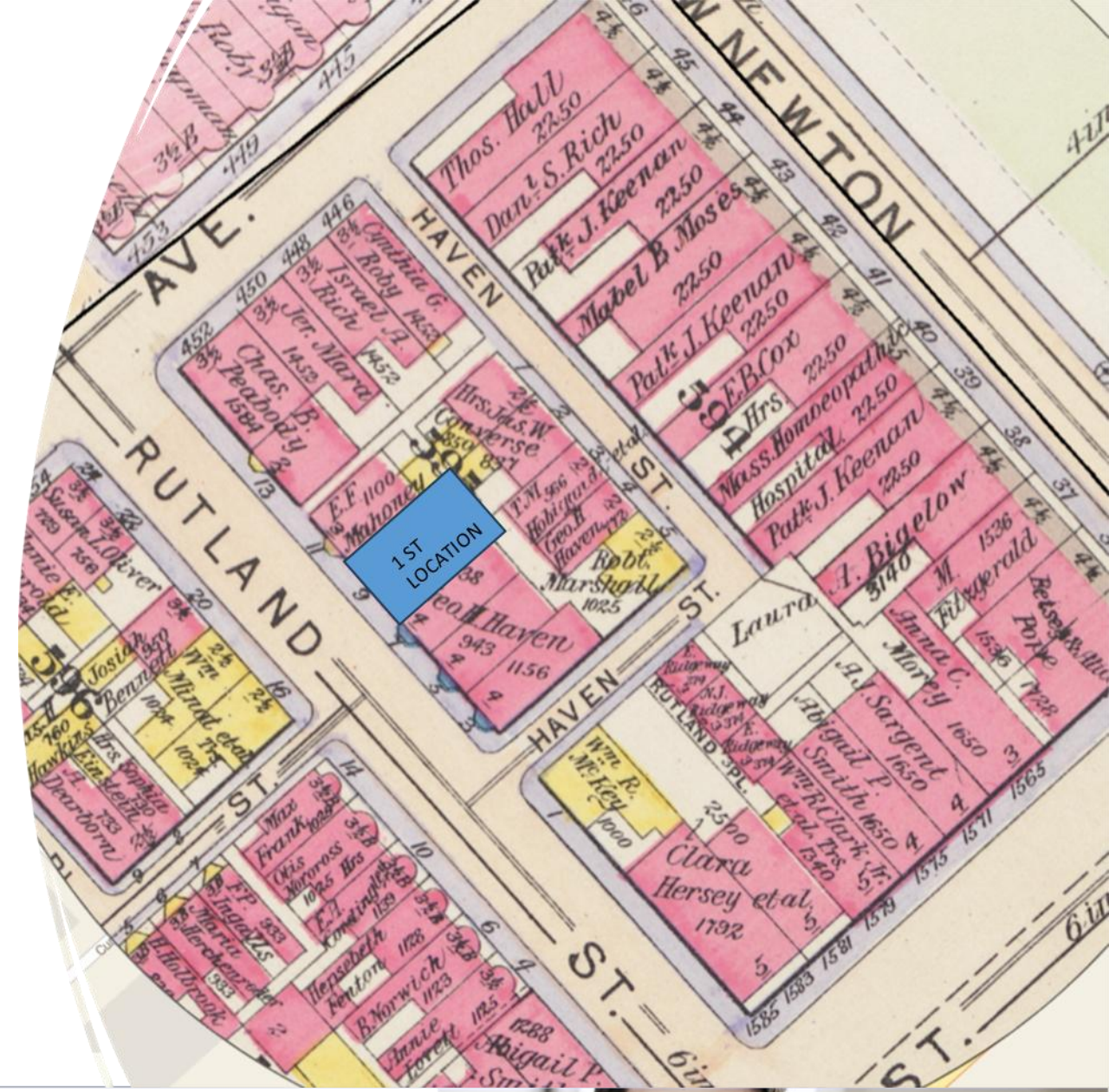


First Location of Children's Hospital: 9 Rutland Street

The small townhouse which the hospital occupied for its first year of existence has since been demolished and Rutland Haven's Community Garden currently occupies this space.

Overlay map: *Atlas of the City of Boston : Boston proper and Back Bay* (G.W. Bromley & Co., 1902)

[https://atlascope.org/#/view:share\\$mode:glass\\$center:-71.07440,42.33901\\$zoom:19.61\\$base:maptiler-streets\\$overlay:ark:/76611/al7rtfm98](https://atlascope.org/#/view:share$mode:glass$center:-71.07440,42.33901$zoom:19.61$base:maptiler-streets$overlay:ark:/76611/al7rtfm98)



Boston Children's

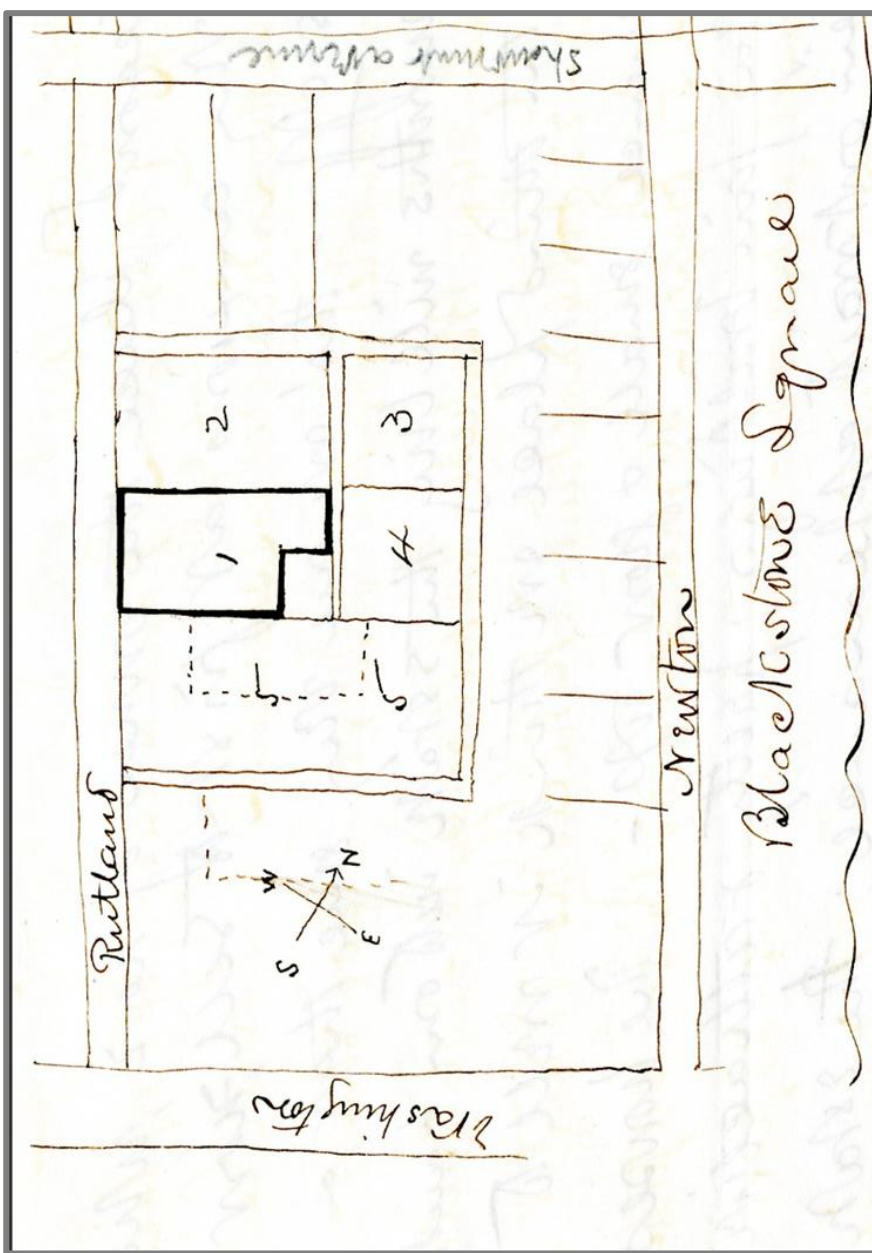
Where the world comes for answers



Children's Hospital First Location

Shown here is a hand-drawn map of first location of Children's Hospital by Dr. Francis Henry Brown, June 17, 1869. Founder of Boston Children's Hospital.

Courtesy of Boston Children's Hospital Archives

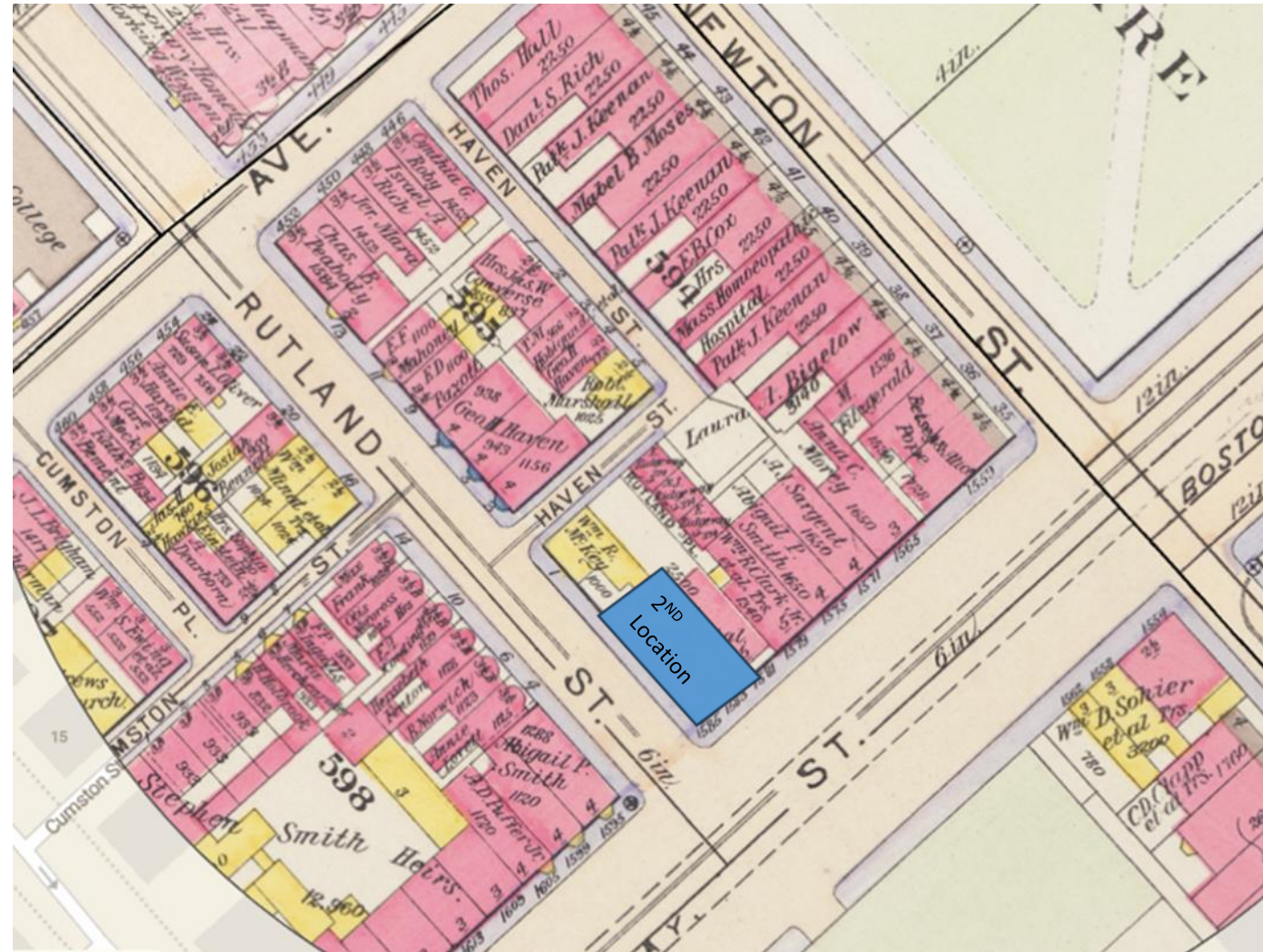


Second Location of Children's Hospital: 1429 Washington Street *Corner of Rutland & Washington*

In 1870, the hospital moved to a larger building at 1429 Washington Street, located on the corner of Washington and Rutland Streets. This townhouse was also demolished in the subsequent years, and the Rutland & Washington Community Garden now encompasses that space.

Overlay map: *Atlas of the City of Boston : Boston proper and Back Bay* (G.W. Bromley & Co., 1902)

[https://atlascope.org/#/view:share\\$mode:glass\\$center:-71.07440,42.33901\\$zoom:19.61\\$base:maptiler-streets\\$overlay:ark:/76611/al7rtfm98](https://atlascope.org/#/view:share$mode:glass$center:-71.07440,42.33901$zoom:19.61$base:maptiler-streets$overlay:ark:/76611/al7rtfm98)



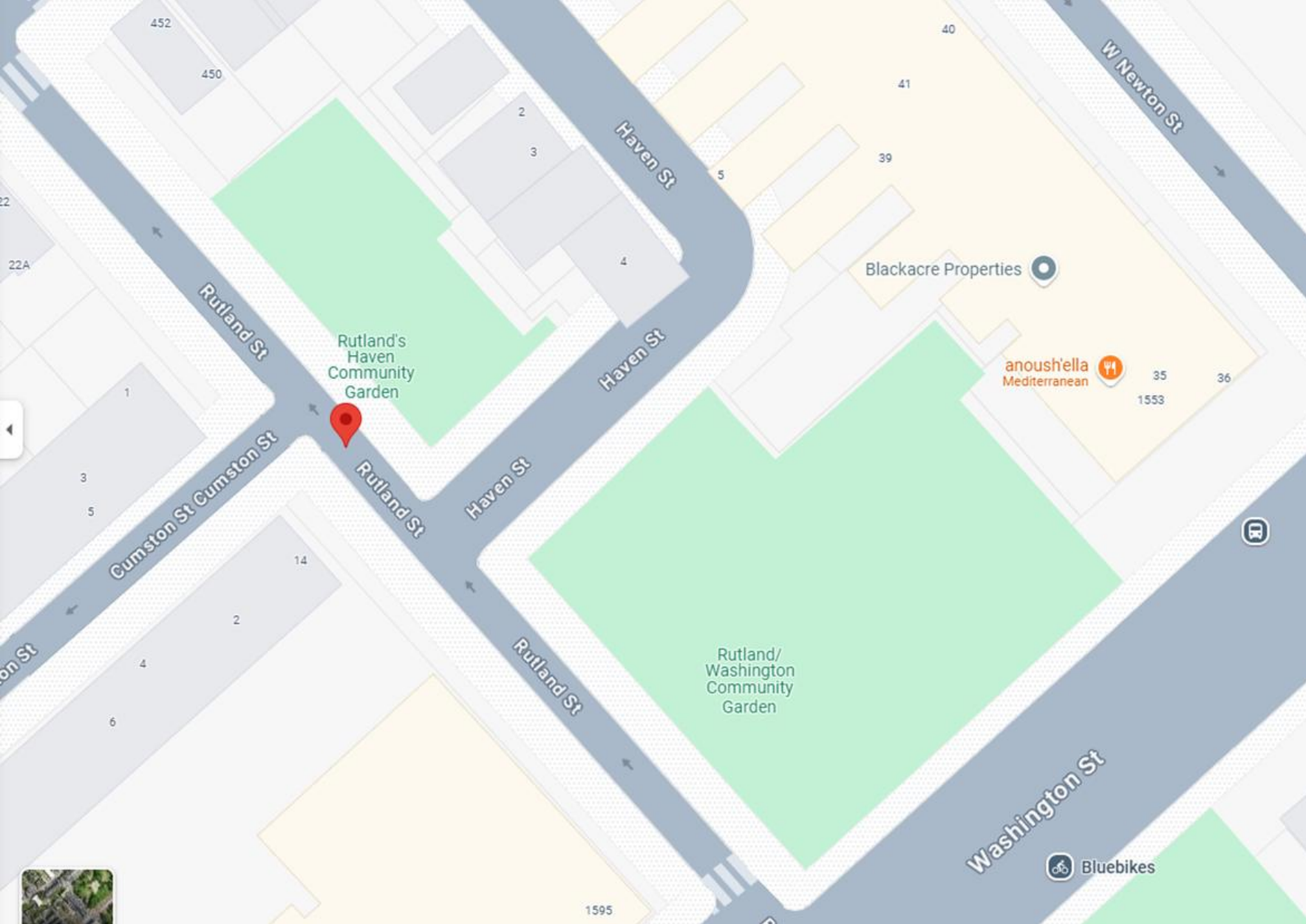
Current Locations



Boston Children's

Where the world comes for answers





Both South End gardens are currently owned by the Trustees of Reservations and have a decorative metal fence surrounding them.

The Trustees of Reservations has graciously granted us approval to install a historic plaque on the fencing of each garden adjacent to existing markers.

3-11 Rutland Street: Rutland's Haven Community Garden



1561-1565 Washington Street: Rutland & Washington Community Garden



Proposed Historic Marker




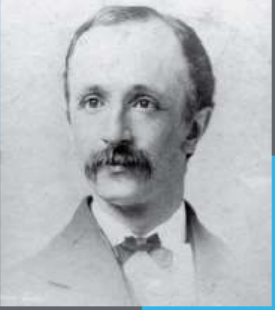
Boston Children's

Where the world comes for answers



15"


Historical Landmark

On this site in 1869, Boston Children's Hospital was first established. Francis Henry Brown, MD, a Boston surgeon and Civil War veteran, recognized a need for a pediatric hospital in the city after touring several such institutions in Europe.


Dr. Brown enlisted the aid of several colleagues to appeal to the citizens of Boston for financial support. His vision became reality on July 20, 1869, in the townhouse that once stood here at 9 Rutland Street. Located within walking distance of Dr. Brown's residence on Waltham Street, this was also where many recent immigrant families lived who could benefit from the care offered.

The building had room for 20 beds. The first patient was a seven-year-old girl with a broken arm and she stayed in the hospital for three weeks!



Scan for more information

Courtesy of the Boston Children's Hospital Alumni Association



LAYOUT: A
SCALE: HALF

First Historic Marker Proposed at Rutland Haven's Haven Community Garden (3-11 Rutland Street)

Text:

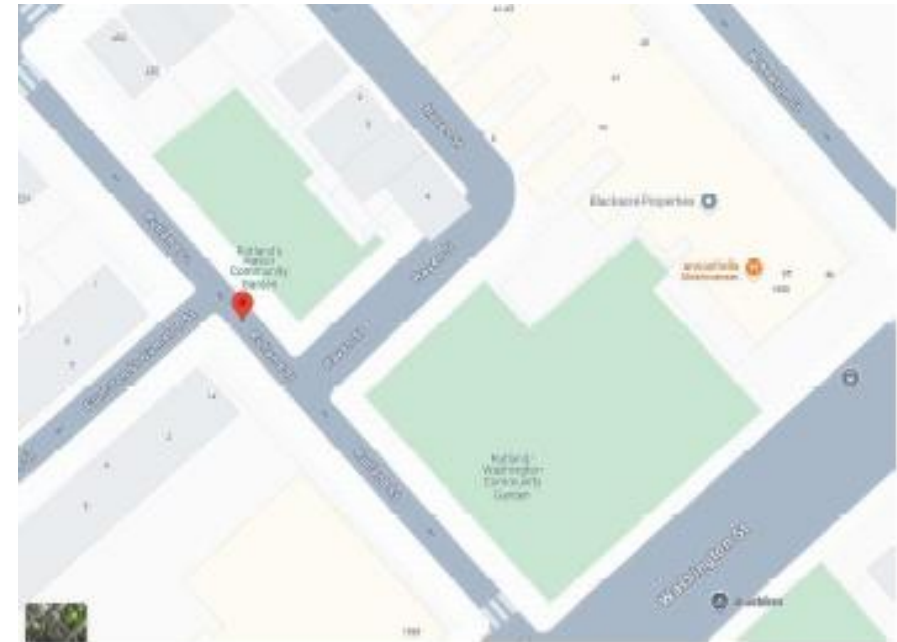
On this site in 1869, Boston Children's Hospital was first established. Francis Henry Brown, MD, a Boston surgeon and Civil War veteran, recognized a need for a pediatric hospital in the city after touring several such institutions in Europe.

Dr. Brown enlisted the aid of several colleagues to appeal to the citizens of Boston for financial support. His vision became reality on July 20, 1869, in the townhouse that once stood here at 9 Rutland Street. Located within walking distance of Dr. Brown's residence on Waltham Street, this was also where many recent immigrant families lived who could benefit from the care offered.

The building had room for 20 beds. The first patient was a seven-year-old with a broken arm and she stayed in the hospital for three weeks!


Mock-Up: Rutland's Haven Community Garden


Scale: NTS




15"

Historical Landmark






In 1870 this site became home to what is now known as Boston Children's Hospital, a year after outgrowing the small building where it began nearby at 9 Rutland Street. Here at 1429 Washington Street on the corner of Rutland and Washington, a larger townhouse (seen in these pictures) had space for 30 beds, ten more beds than at the previous location.




Then known simply as the Children's Hospital, it remained here until 1882, when it moved to a much larger facility designed specifically as a hospital on Huntington Avenue adjacent to the future site of Symphony Hall. By 1914, that space too was outgrown, and the hospital relocated to its current location on Longwood Avenue.



Scan for more information

Courtesy of the Boston Children's Hospital Alumni Association



15"

Second Historic Marker Proposed for Rutland & Washington Street Community Garden (1561-1565 Washington Street)

Text:

In 1870, this site became home to what is now known as Boston Children's Hospital, a year after outgrowing the small building where it began nearby at 9 Rutland Street. Here at 1429 Washington Street, on the corner of Rutland and Washington, a larger townhouse (seen in these pictures) had space for 30 beds, ten more beds than at the previous location.

Then known simply as the Children's Hospital, it remained here until 1882, when it moved to a much larger facility designed specifically as a hospital on Huntington Avenue adjacent to the future site of Symphony Hall. By 1914, that space too was outgrown and the hospital relocated to its current location on Longwood Avenue.

LAYOUT: B
SCALE: HALF

Mock-Up: Rutland & Washington Community Garden

Scale: NTS



Historic Marker Specifications



Elements in Common to Each Marker:

- Title Text: Historic Landmark
- Boston Children's Hospital Logo on upper Right-Hand-Side in title bar
- Image(s) on Left-Hand-Side of Panel
- Body Text on Right-Hand-Side of Panel
- Trustees of Reservations logo bottom left
- Text: Scan for more information with QR code
- Text: Courtesy of the Boston Children's Hospital Alumni Association
- Possible Boston Landmarks Commission Logo



Marker Specifications

15" x 15" aluminum plaque with direct print copy with direct print copy

Attached to metal fence with 3/16" Aluminum flat bar

Fabrication & Installation By:

Sign System Solutions
25 West Union Street,
Suite 203
Ashland, MA 01721
PH: 508-626-0505

DESCRIPTION

1/4" aluminum plaque with direct print copy and UV Colorlast™ fence mounted with 3/16" aluminum flat bar

TYPEFACES

Museo Sans 300
Museo Sans 500
Museo Sans 700

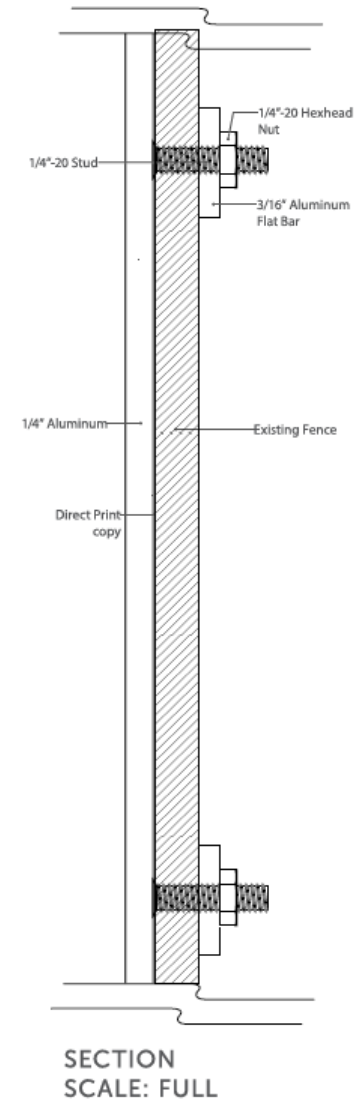
COLORS/FINISHES

Aluminum panel - direct printed to match
PMS 287c Boston Blue
PMS 7461c Boston Ocean
PMS Cool Gray 9c
White

Overlamine for exterior application

INSTALLATION

Mechanically Fastened to Fence in Field with 3/16" Aluminum Flat Bar, 1/4"-20 Studs (On Back of Sign Panel) and Hexhead Nuts.

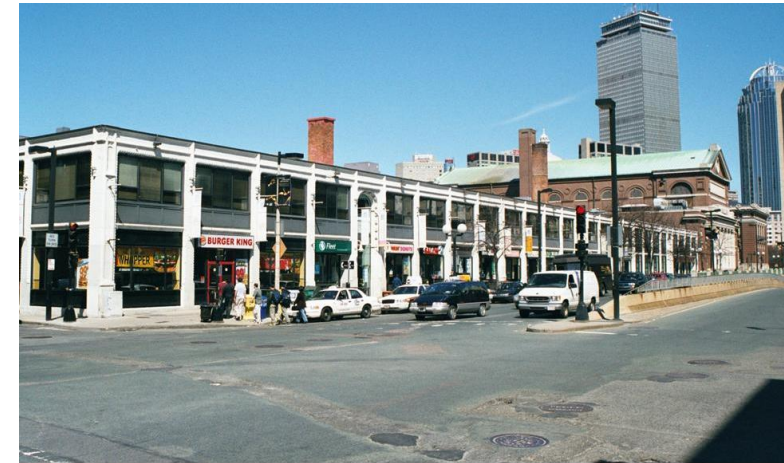


Completion of Historic Plaques and Future Plans



Commemoration of Installation of Historic Markers

- Once the historic markers have been created and installed, we anticipate hosting a celebration with senior leadership from Boston Children's Hospital, the Trustees of Reservations, and the Boston Landmarks Commission present at the unveiling.
- In 1882, the hospital relocated to a much larger, newly constructed, facility on Huntington Avenue, which also no longer exists, where it remained until moving to its present site on Longwood Avenue in 1914. Future plans include adding a historic marker at this location.



Thank You

