

1 Saint George Street, Boston, MA ; Restoration

Presentation for City of Boston Landmarks Commission
Proposal to clad existing projected bays with Copper Panels.

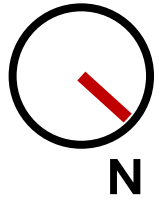


Scope of Work

- **Installation of New Copper Metal Cladding Over Existing Bay Wall Siding (3)**
- The existing cladding will be restored and retained, and a new underlayment will be applied directly over it, followed by the installation of new copper wall cladding panels.
- The underlayment will be breathable to aid in drying of the exterior wall assembly and is assumed to have an interior vapor retarder installed towards the interior side under the interior finish sheathing.
- The product for the underlayment, which will function as an air and water barrier, is Henry BlueSkin VP (vapor permeable). The copper cladding will be 32-ounce weight. Work excludes the 5th floor.
- **Project Total - \$224,653**

Plan View

BRS



- Work will take place at 2 extruded bays along the North Elevation; and 1 extruded bay along the East.

Existing Conditions

BRS



North Elevation



North Elevation Area of work

Existing Conditions

BRS



East Elevation



Bay Close-up Typical

Existing Conditions

BRS



Bay Close-up Typical



Bay Close-up Typical

Rendering Review-

Proposed, As Initially Installed: Pre-Patina

BRS

North Elevation



Rendering Review-

Proposed, As Initially Installed :+/- 4 Years Exposure

BRS

North Elevation



Rendering Review-

Proposed, As Initially Installed :+/- 15 Years Exposure

BRS

North Elevation



Rendering Review-

Proposed – East Elevation

BRS



Recently installed



+/- 4 years



+/- 15 Years

Detailed Drawings



1 EXISTING NORTH ELEVATION
N.T.S.



2 PARTIAL NORTH ELEVATION
1/4" = 1'

1 ST. GEORGE ST COPPER RECLAD

1 ST. GEORGE ST
Boston, MA 02118

CONSULTANT:



**BUILDING RECON
SERVICES**

371 DORCHESTER AVE
BOSTON, MA 02127
PHONE: 617-464-4260
FAX: 617-464-4160
WEBSITE: www.brsinfo.com

No.	Description	Date

PARTIAL NORTH ELEVATION

Project number	
Date	02-10-2025
Drawn by	DA
Checked by	NR

A-201

Scale AS NOTED



1 EXISTING EAST ELEVATION
N.T.S.



2 PARTIAL EAST ELEVATION
1/4" = 1'

1 ST. GEORGE ST
COPPER
RECLAD

1 ST. GEORGE ST
Boston, MA 02118

CONSULTANT:



**BUILDING RECON
SERVICES**

371 DORCHESTER AVE
BOSTON, MA 02127
PHONE: 617-464-4260
FAX: 617-464-4160
WEBSITE: www.brsinfo.com

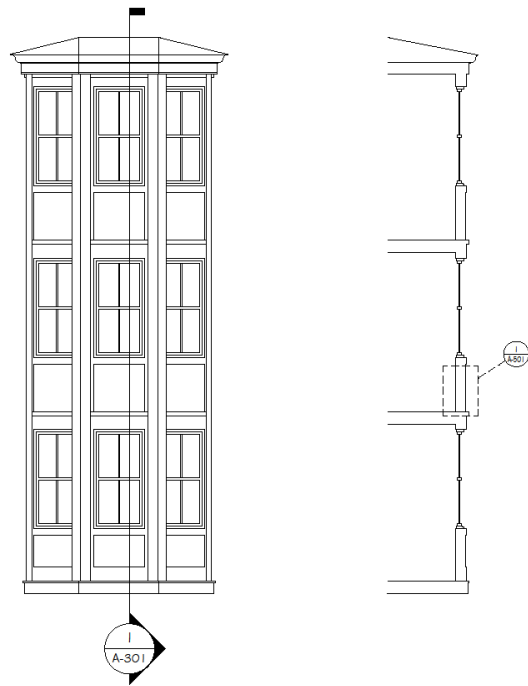
No.	Description	Date

PARTIAL EAST
ELEVATION

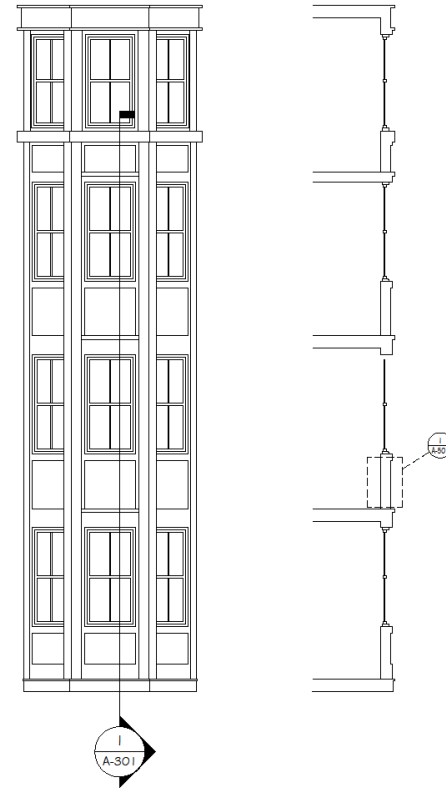
Project number	
Date	02-10-2025
Drawn by	DA
Checked by	NR

A-202

Scale AS NOTED



1 NORTH BAY SECTION
1/4" = 1'



2 EAST BAY SECTION
1/4" = 1'

1 ST. GEORGE ST COPPER RECLAD

1 ST. GEORGE ST
Boston, MA 02118

CONSULTANT:



**BUILDING RECON
SERVICES**

371 DORCHESTER AVE
BOSTON, MA 02127
PHONE: 617-464-4260
FAX: 617-464-4160
WEBSITE: www.brsinfo.com

No.	Description	Date

PARTIAL SECTIONS

Project number	
Date	02-10-2025
Drawn by	DA
Checked by	NR

A-203

Scale AS NOTED



1 NORTH ELEVATION RENDERING
N.T.S.

1 ST. GEORGE ST
COPPER
RECLAD

1 ST. GEORGE ST
Boston, MA 02118

CONSULTANT:



**BUILDING RECON
SERVICES**

371 DORCHESTER AVE
BOSTON, MA 02127
PHONE: 617-464-4260
FAX: 617-464-4160
WEBSITE: www.brsinfo.com

No.	Description	Date

NORTH ELEVATION
RENDERING

Project number	
Date	02-10-2025
Drawn by	DA
Checked by	NR

A-204

Scale AS NOTED



1 EAST ELEVATION RENDERING
N.T.S.

1 ST. GEORGE ST
COPPER
RECLAD

1 ST. GEORGE ST
Boston, MA 02118

CONSULTANT:



**BUILDING RECON
SERVICES**

371 DORCHESTER AVE
BOSTON, MA 02127
PHONE: 617-464-4260
FAX: 617-464-4160
WEBSITE: www.brsinfo.com

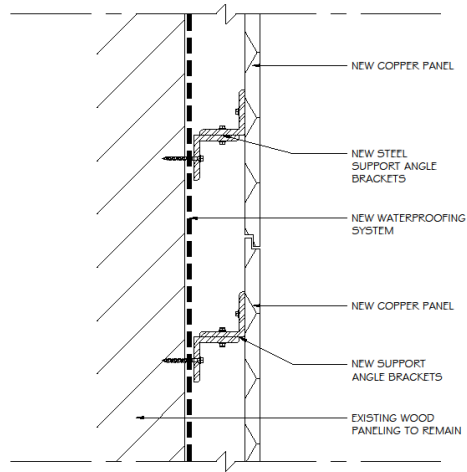
No.	Description	Date

EAST ELEVATION
RENDERING

Project number	
Date	02-10-2025
Drawn by	DA
Checked by	NR

A-205

Scale	AS NOTED
-------	----------



1 COPPER CLADDING ATTACHMENT
3" = 1'

1 ST. GEORGE ST COPPER RECLAD

1 ST. GEORGE ST
Boston, MA 02118

CONSULTANT:



**BUILDING RECON
SERVICES**

371 DORCHESTER AVE
BOSTON, MA 02127
PHONE: 617-464-4260
FAX: 617-464-4160
WEBSITE: www.brsinfo.com

No.	Description	Date

COPPER CLADDING DETAIL

Project number	
Date	02-10-2025
Drawn by	DA
Checked by	NR

A-501

Scale	AS NOTED
-------	----------