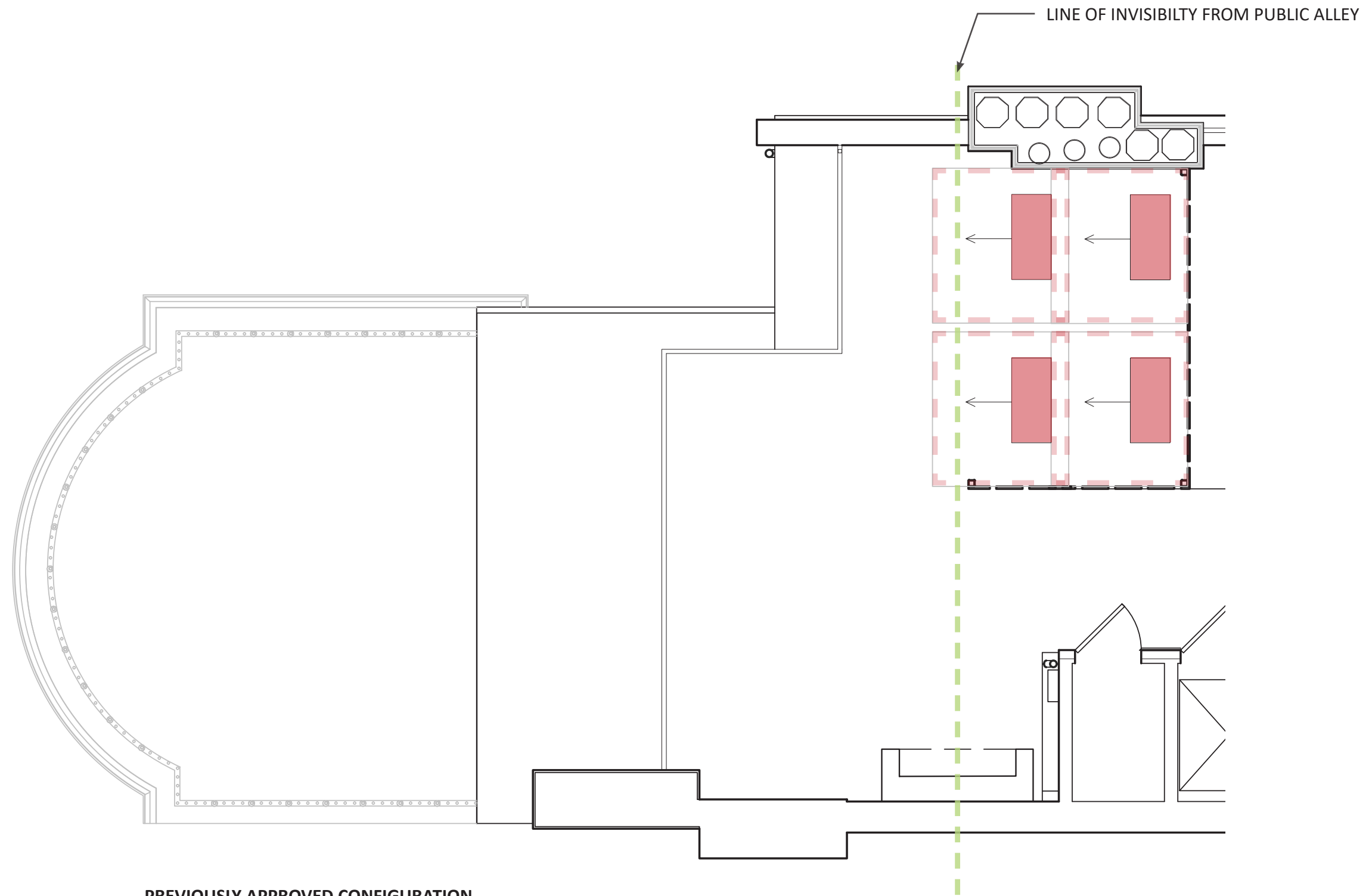
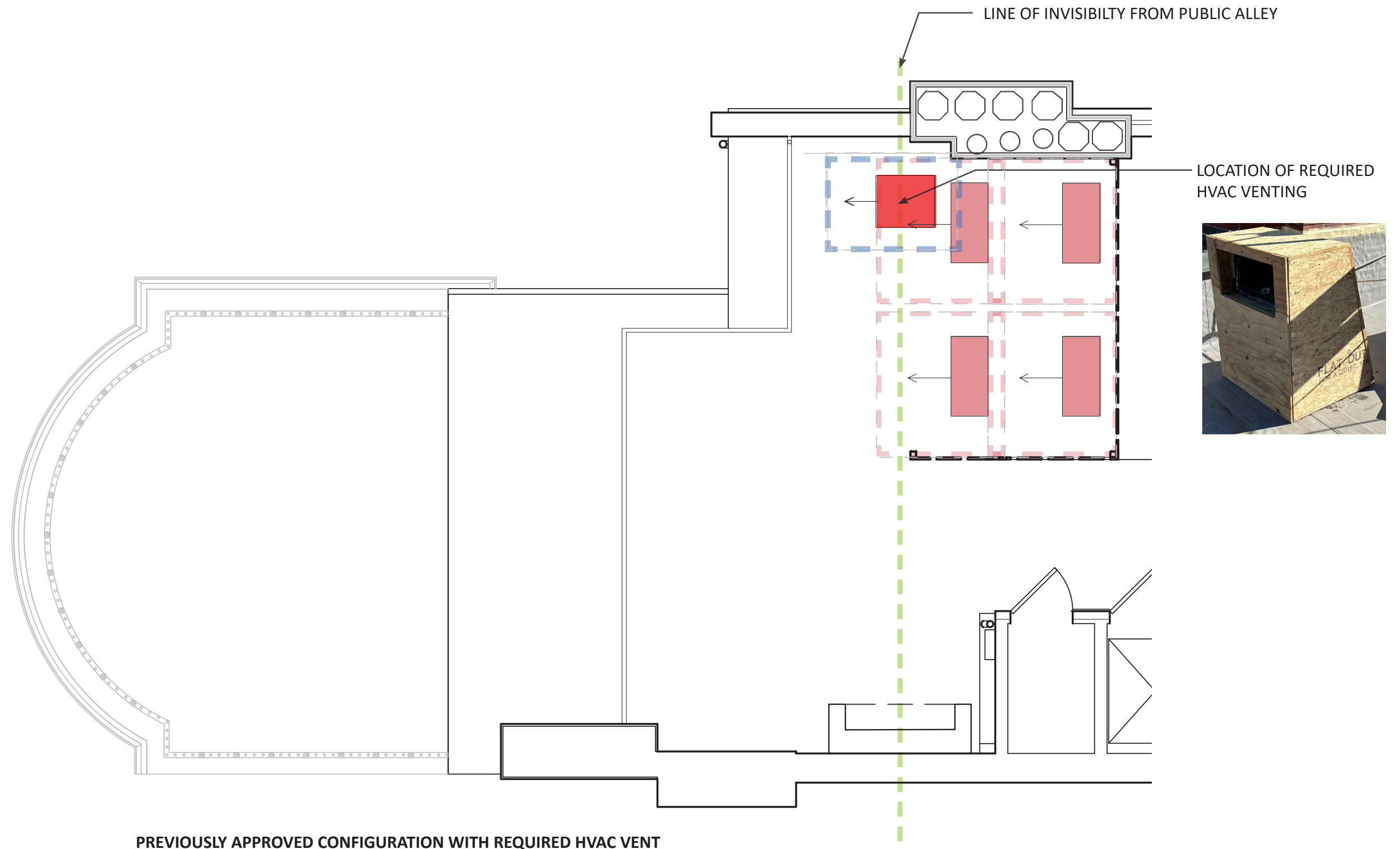
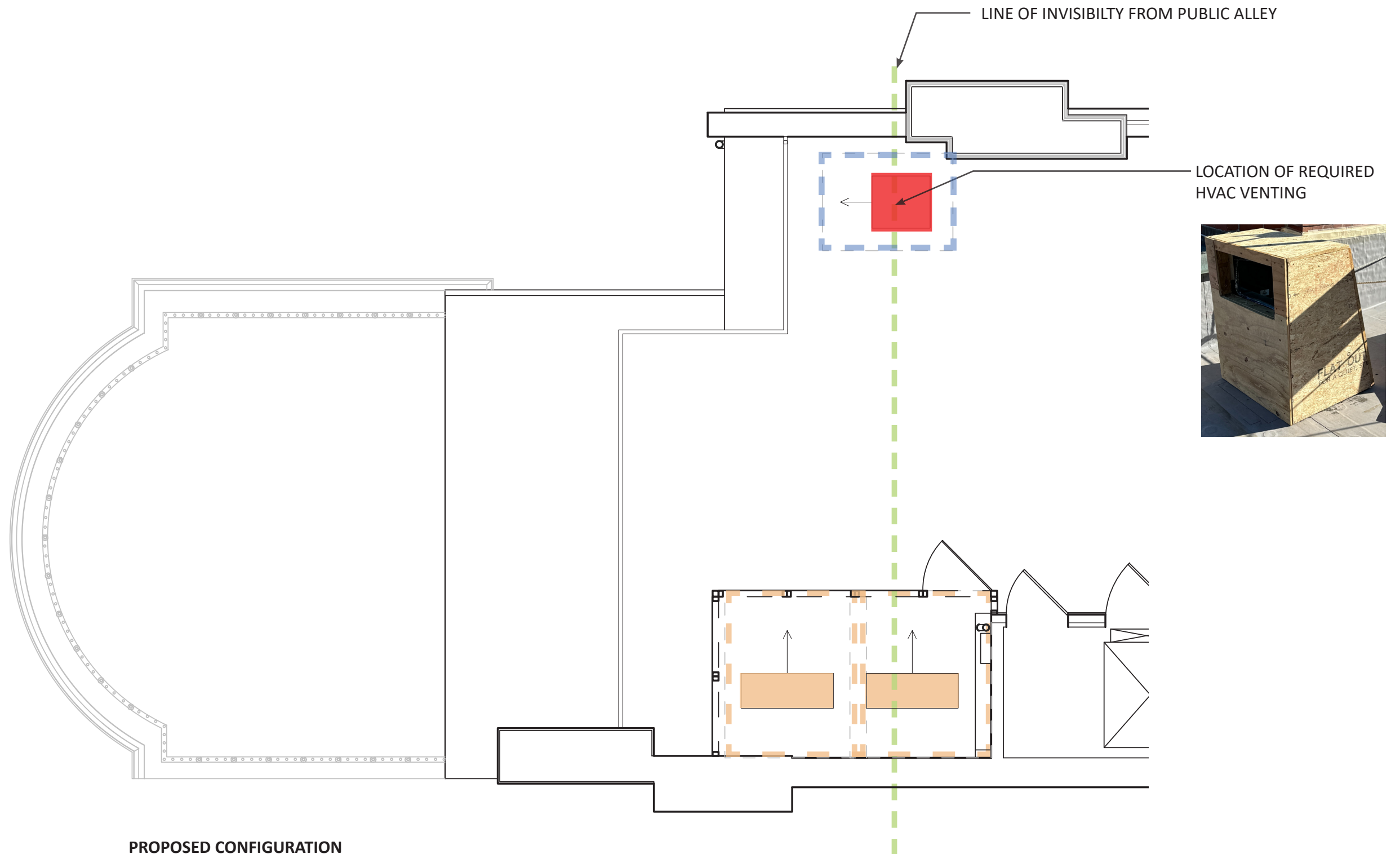




EXISTING CONDITIONS PHOTOS







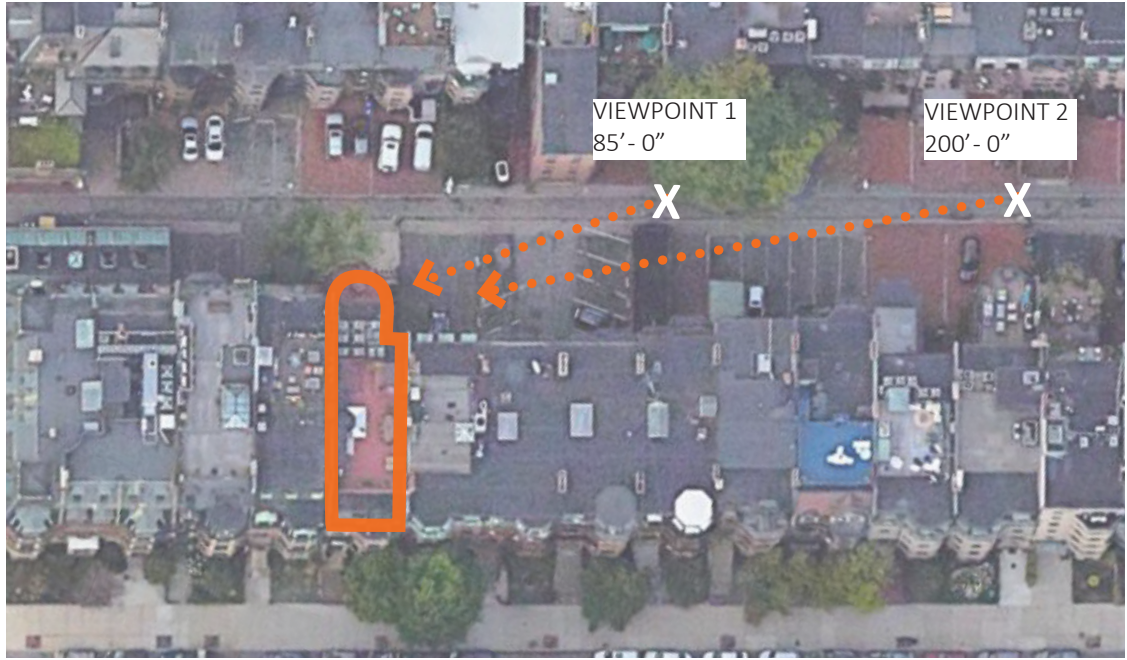


STREET VIEWPOINT 1



STREET VIEWPOINT 2

VIEWPOINT KEY:



SIMILAR TO APPROVED SCREEN  
AT 161 COMMONWEALTH AVE.

PROPOSED CONFIGURATION  
ALLEYWAY VIEWPOINTS

131 COMMONWEALTH AVE  
12 MARCH 2025

CATHERINE TRUMAN ARCHITECTS