

Early Action Project Update



Goals of the Early Action Project

- Engage the community and encourage conversation about transportation
- Create temporary small-scale changes to the street
- Evaluate the small-scale project and gather feedback to inform larger corridor design

What we have done so far (June-July 2024)

- Developed a “toolbox” of interventions that could be applied as part of the project
- Analyzed results from community input, car traffic data, pedestrian counts, and bus ridership
- Determined a shortlist of intersections based on data analysis
- Received input on proposed locations and interventions from members of the Community Advisory Team. We also received input from the community at a Public Meeting on July 23 and via a survey distributed after the meeting
- Formalized a list of locations and interventions based on feedback received in the public meeting and survey

The Boston Transportation Department will be installing pavement markings and flex posts to improve pedestrian safety at the following intersections:

1. Columbia Road @ Washington Street
2. Columbia Road @ Geneva Avenue / Brinsley Street
3. Columbia Road @ Dudley Street / Stoughton Street
4. Columbia Road @ Massachusetts Avenue / Boston Street / East Cottage Street

For more information on what is happening at each intersection, see the final page of this document.

Next steps (now to Spring 2025)

Technical design of intersections underway

- Final design submission by the end of September and approval from the City in October

As part of the Early Action Project, we want to incorporate art from local artists. We also want to actively engage with the community about beautification. Therefore, we extended the Early Action Project timeline to Spring 2025 to ensure enough time for artist selection and community participation. In collaboration with the Arts & Culture Department, the project team will invite local artists to participate through a Call to Artists.

Between now and December 2024:

- Finalize technical components of the Early Action Project design
- Determine a selection process for community artists
- Work with the Community Advisory Team to engage with community members, select artist(s) and art design(s)
- Share the overall Early Action Project with the community
- The City will implement technical safety elements first

January - March 2025

- Art design of Early Action Project
- Selection of materials and other beautification components

Spring 2025

- Community art installed in the roadway
- Celebration of project!

Toolkit of Interventions

The different interventions that will be put in as part of the Early Actions Project are as follows:

Painted Median Island Extension

A median island allows people to pause while crossing multiple travel lanes. Median islands help people feel safer at intersections or mid-block crossings. They enable people to cross the street in two stages. Median islands can also slow turning traffic by ensuring that drivers cannot “cut” turns quickly.

We can create median islands with pavement markings and vertical flexible posts.

Roslindale



Clear corner

Parking is prohibited ahead of a crosswalk or intersection. Parked vehicles or other obstructions can block views of other people driving, biking, or waiting to cross. When parking is restricted, drivers are more likely to see approaching vehicles or people crossing the street. This reduces the likelihood of crashes at intersections. This can also help shorten crossing distance.

Egleston Square

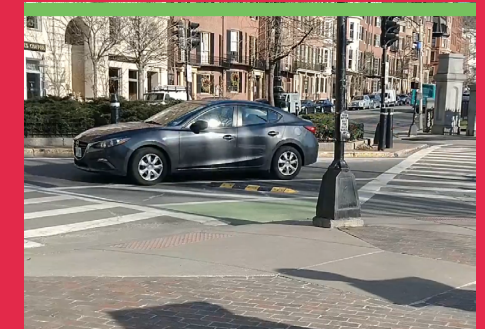


Slow turn wedge

Slow-turn wedges slow down drivers who are turning. We create them with pavement markings, small rubber bumps, and sometimes, flexible posts.

They discourage people from turning quickly from one street to another. Slower drivers are better able to see people crossing the street, people in bike lanes, and other drivers.

Beacon Hill



Traffic signal box art

Traffic signal box art can help make the street look more appealing.

The Arts & Culture Department’s PaintBox program aims to:

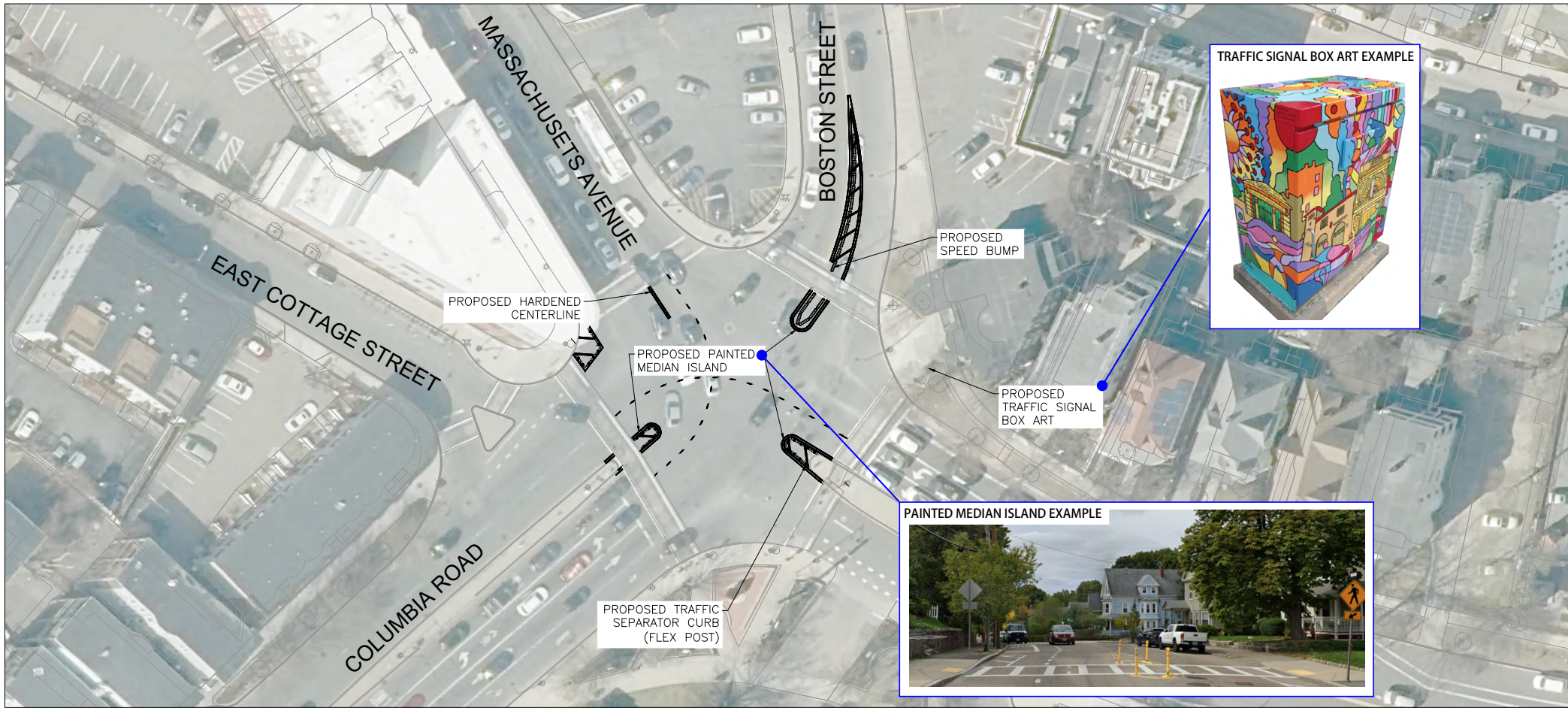
- beautify Boston’s neighborhoods
- introduce residents to the artists that live among them
- provide an opportunity for artists looking to enter the field of public art.

Upham’s Corner, Dorchester





Columbia Road at Massachusetts Avenue and Boston Street at East Cottage Street



TRAFFIC SIGNAL BOX ART EXAMPLE



PAINTED MEDIAN ISLAND EXAMPLE



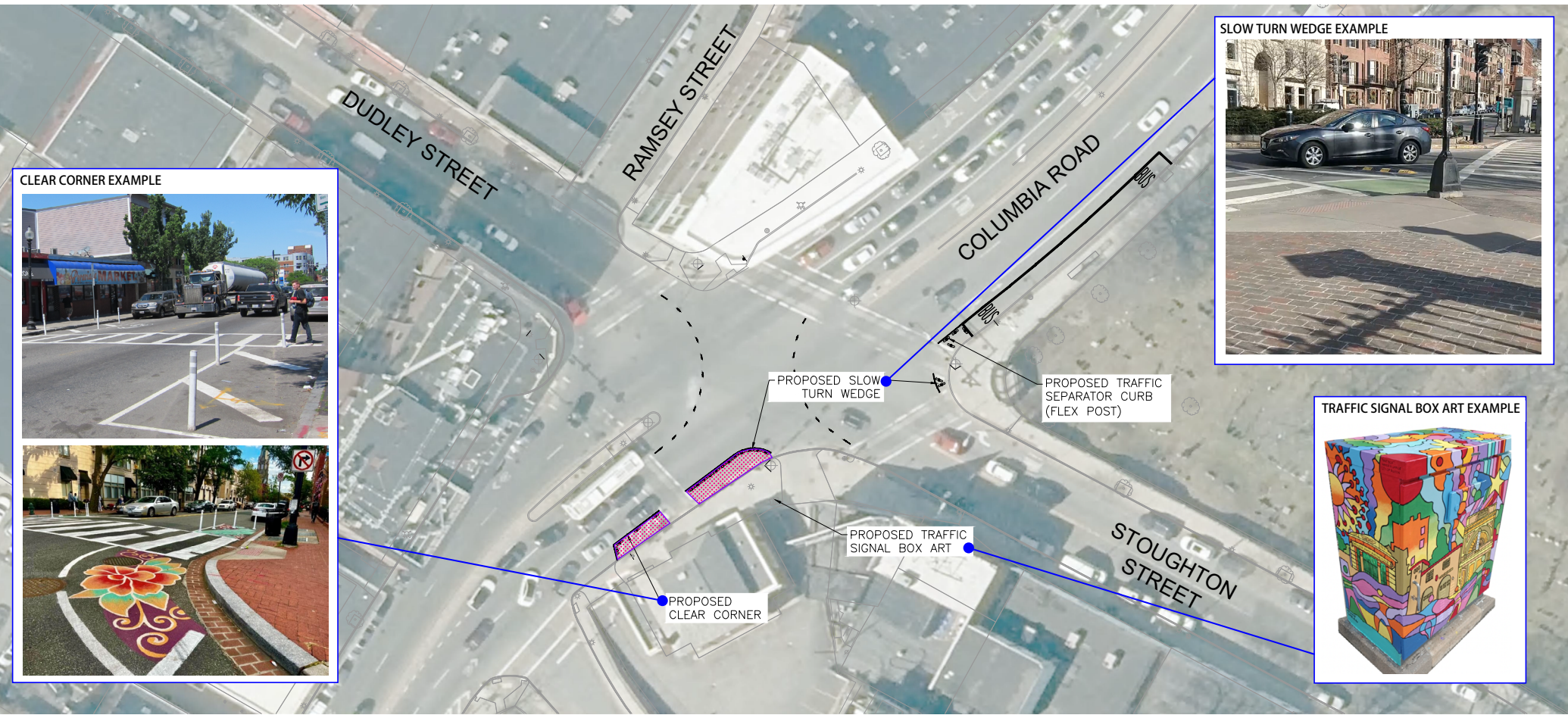
SCALE 1" = 20'

EARLY ACTION PLANS

10/10/2024



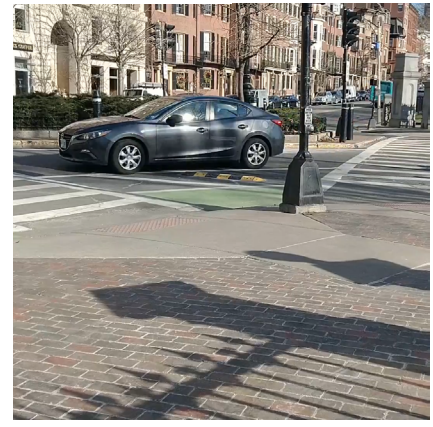
Columbia Road at Dudley Street and Stoughton Street



CLEAR CORNER EXAMPLE



SLOW TURN WEDGE EXAMPLE



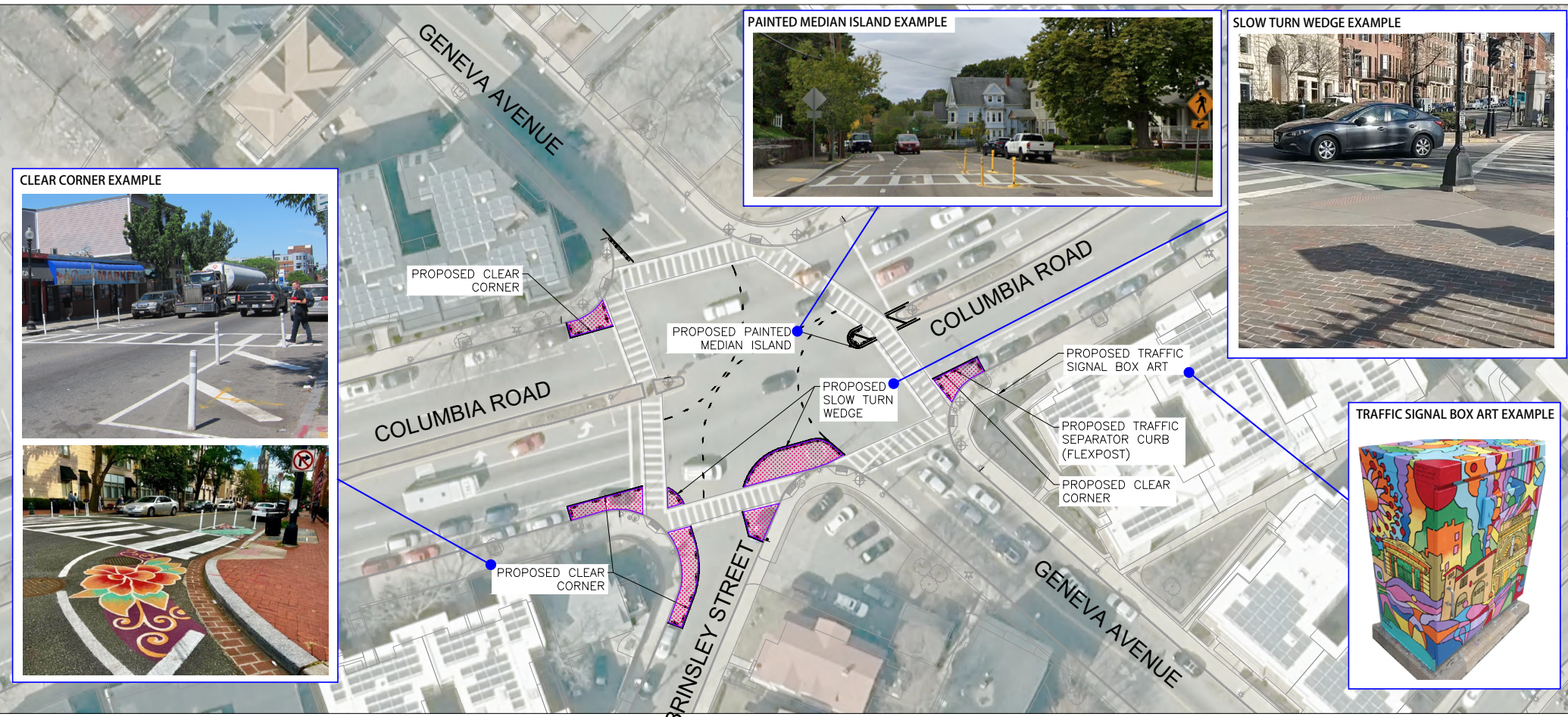
TRAFFIC SIGNAL BOX ART EXAMPLE



SCALE 1" = 20'



Columbia Road at Geneva Avenue and Brinsley Street



SCALE 1" = 20'

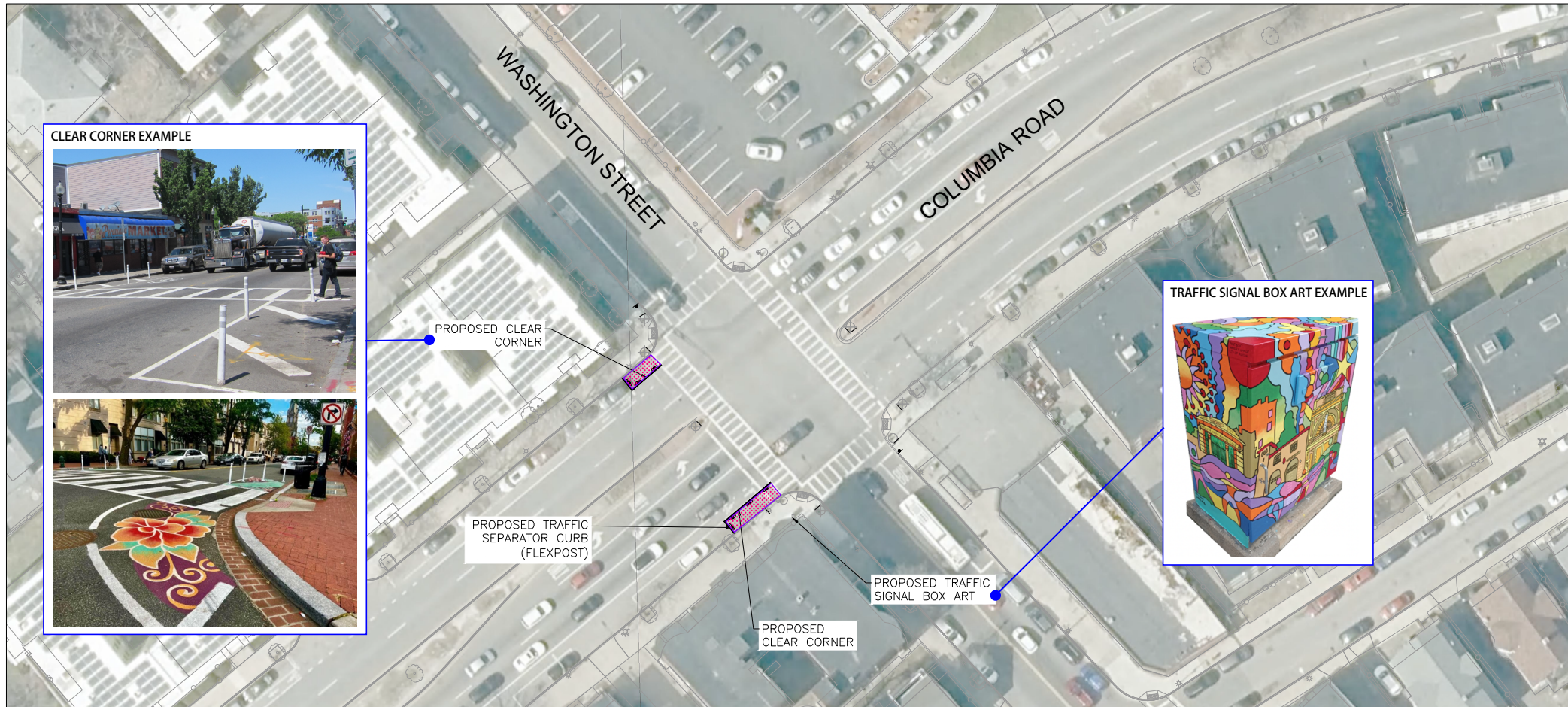
EARLY ACTION PLANS

10/10/2024





Columbia Road at Washington Street



EARLY ACTION PLANS