

Presentation to the Boston Cannabis Board

BY: BEAN COLLECTIVE LLC



DOORZIPS

Highlights of Proposal

Bean Collective is a local SE and veteran-owned marijuana home delivery business seeking an (“HCA”) from the City of Boston.



BC operating times will be from 9:00 AM to 9:00 PM Monday through Sunday



BC will employ Boston residents with an emphasis on diversity and inclusion.

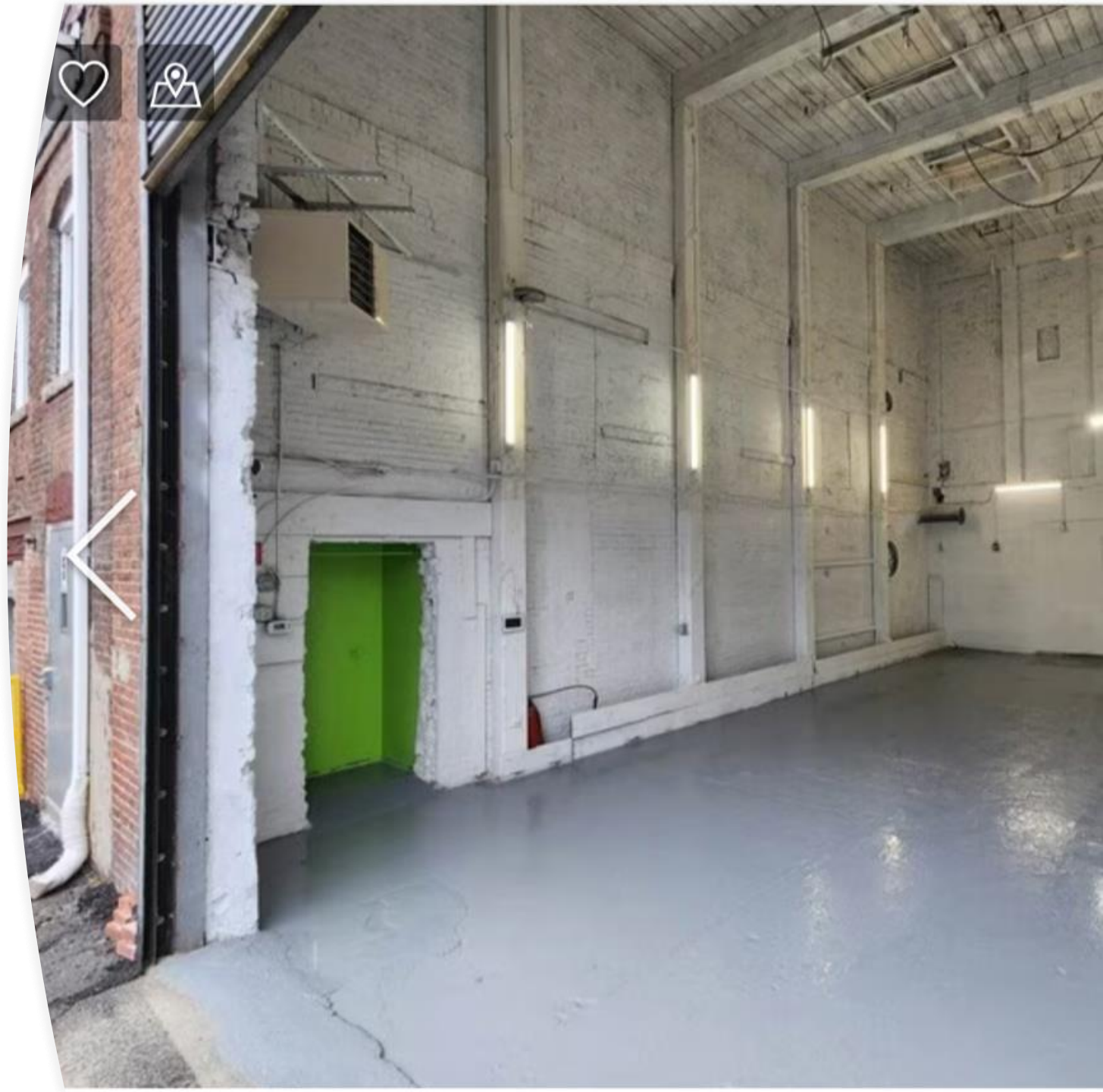


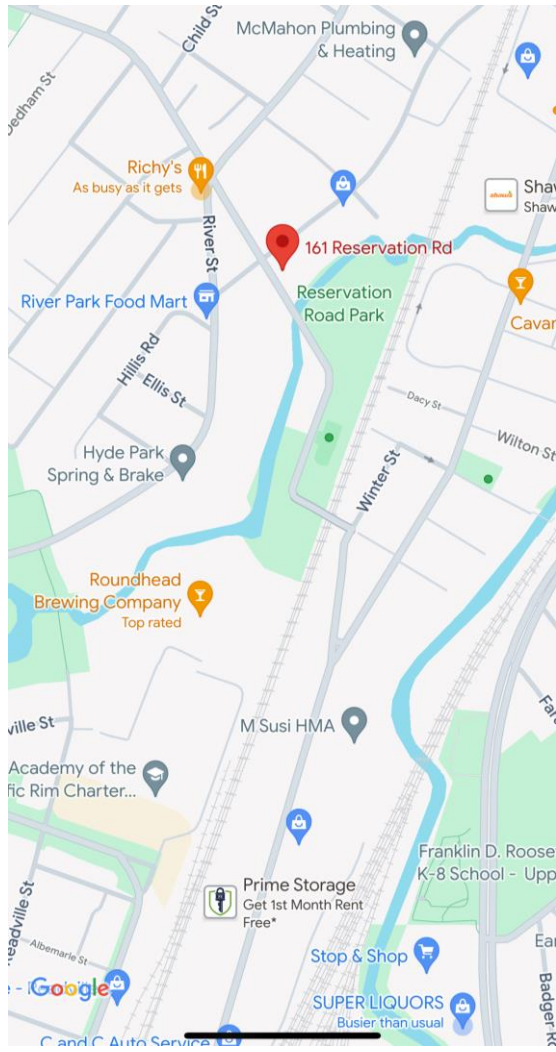
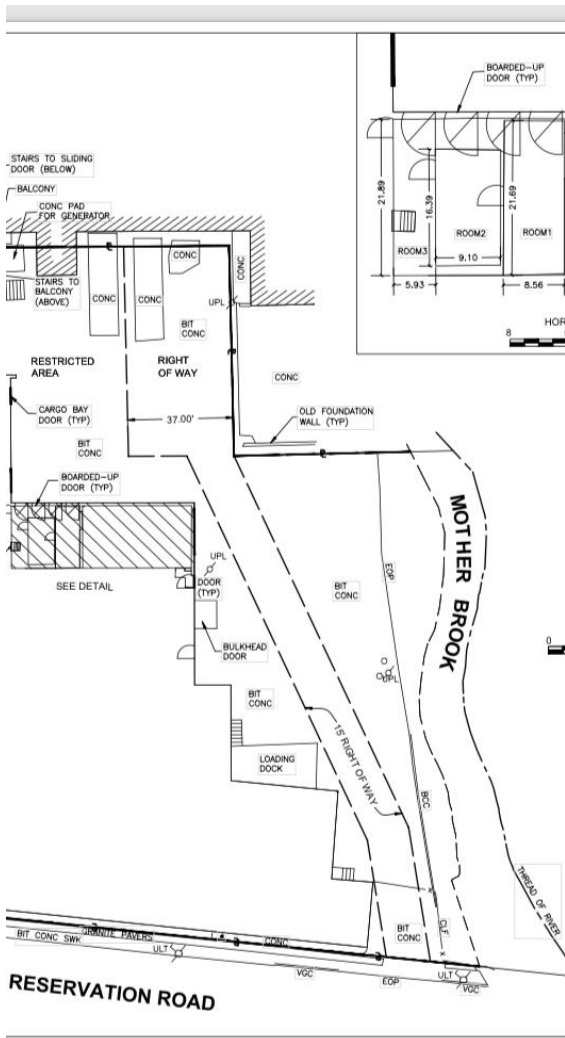
Our business will generate tax revenue for Boston (3% local tax option and 3% community impact fee).

Our location: 110-114 Business St

BC has chosen to locate our cannabis delivery business at 110-114 Business St in Hyde Park for several reasons.

1. We prioritize the safety of the community. Our location was carefully selected based on its distance from schools, social services, or treatment centers.
2. The location is within proximity to residential areas which is essential for the growth and success of our business.
3. Lastly, the location has excellent access to public transportation, making it easy for our staff to commute to and from work.





Proposed Location

- 110-114 Business St, Boston MA
- Hours 9 AM - 9 PM, Mon-Sun
- **Property Facts:**
- Approx. 1,750 sq ft #Unit 5
- **Zoning Buffer**
- No school within 500ft
- Proposed BCB within half mile of Cannabis Establishment (1295-1297 River St) Sweet Wellness LLC.
- **Property Perks**
- Multiple transportation options (train, bus, etc.)
- Onsite parking for employees, delivery vehicles will be housed within facility, loading bay for incoming shipments.
- Limited visibility
- Limited foot traffic

Meet The Team

- **Donald Rodriguez**, CEO (Veteran & SE)

- Financial Oversight
- Performance Analytics
- Product Procurement
- Marketing & Branding
- Supplier Relations

- **Elliott Antoine**, COO (Veteran)

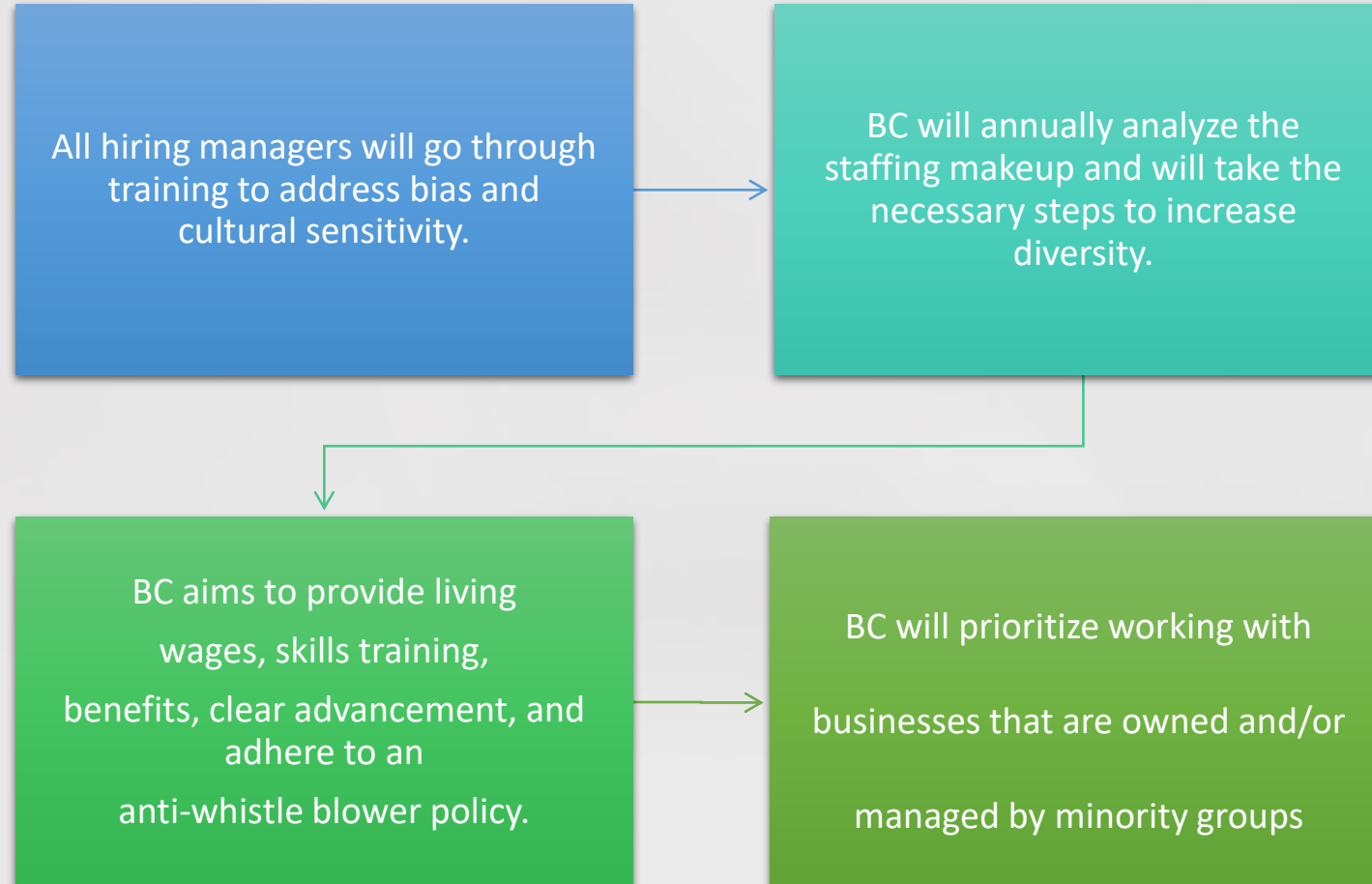
- Legal and Compliance
- Financial Oversight
- Investor Relations
- Store Management

- **Emiris Morrobel**, Warehouse and Logistics Director

- Inventory Management
- Supplier Relations
- Product Procurement
- Logistics



Diversity and Inclusion



Diversity and Local Hiring

Diversity & Hiring Goals

- Starting wage of \$18 to \$22 per hour
- Annual performance and wage review
- Wages will adjust with inflation
- Full-time (minimum 32-hour workweek)

Staff benefits:

- Health, dental, and vision insurance
- Paid vacation time

Community Work

- Diversity-focused job boards
- Staffing agencies
- On-site job fair(s)
- Communication with Boston community leaders
- Career/Business
- Offer a yearly canna class to the community. Our goal is to offer a grant to a participant of the class.

BC will hire as follows:

- 75% Of employees will be Boston residents
- 50% Of employees will be Women
- 50% Of employees will be minorities
- 10% Of employees will be LGBTQ individuals
- 10% Of employees will be veterans
- We will hire those that have been affected by the war on drugs.
- Will measure our diversity success annually

Community Benefits

Economic Growth

Preference to local vendors, contractors, and other ancillary service Providers.

Job Creation & Employment

Local hiring | Living wage | Full benefits | Substantial training

Revenue & Monetary Benefits

Community Impact Fees and Retail Tax

BC will provide an annual career development class to at least 10 participants. BC will offer hands-on training about cannabis industry



COMMUNITY
IMPACT



PARTICIPATE IN
LOCAL DRUG
EDUCATION AND
PREVENTION
EFFORTS



VOLUNTEERING
FOR COMMUNITY
FOCUSED
PROJECTS



PARTICIPATING IN
COMMUNITY
EVENTS



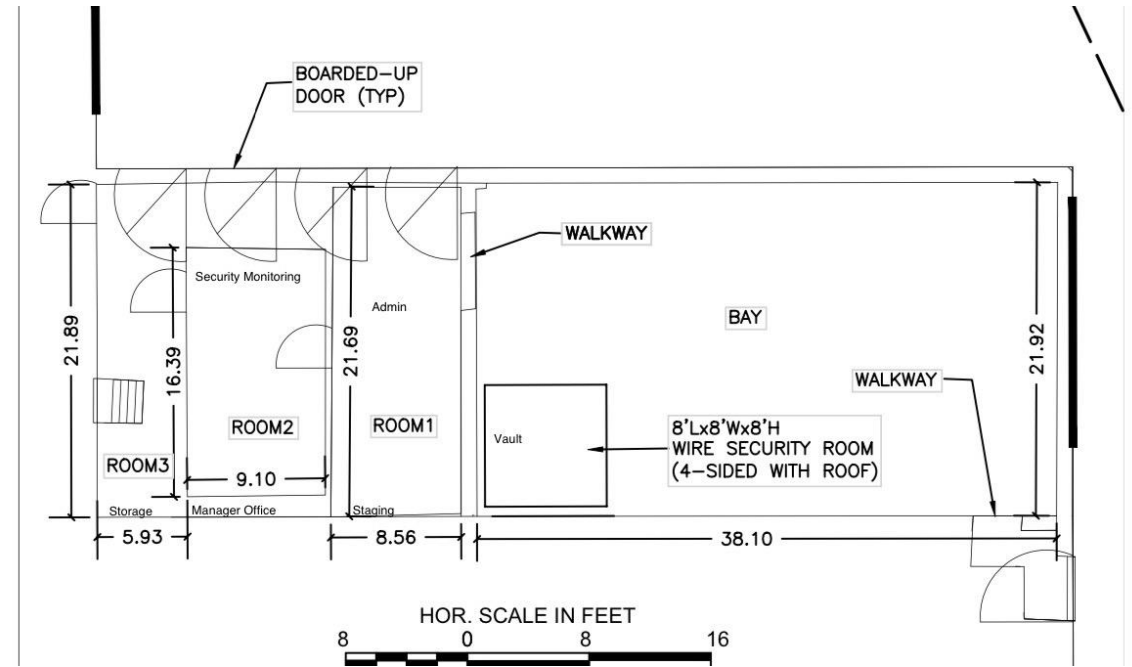
Security Plan

- ID verification
- Monitor customer flow
- Comprehensive facility security plan
- Camera monitoring and alarm system
- Product security during delivery operations
- Secure handling of all payments
- No cash payments accepted
- Alarm System will report directly to BPD

Security

- Building and Product Security - Install comprehensive surveillance systems covering all entry points and storage areas. - Utilize secure storage solutions, including lockable vaults, for all cannabis products. - Conduct routine audits and inventory checks to ensure product safety.
- Protecting Youth Access - Implement strict age verification protocols at delivery and purchase points.
- Collaborate with local authorities and community programs to educate about responsible use.
- Utilize technology to monitor and prevent underage access to online ordering platforms.
- Transportation Security - Equip delivery vehicles with secure storage boxes and surveillance cameras.
- Require drivers to wear body cameras during deliveries for added accountability.
- Enforce strict identification verification procedures at the time of delivery, ensuring compliance with legal age requirements.

Facility Layout



Thank You



DOORZIPS