

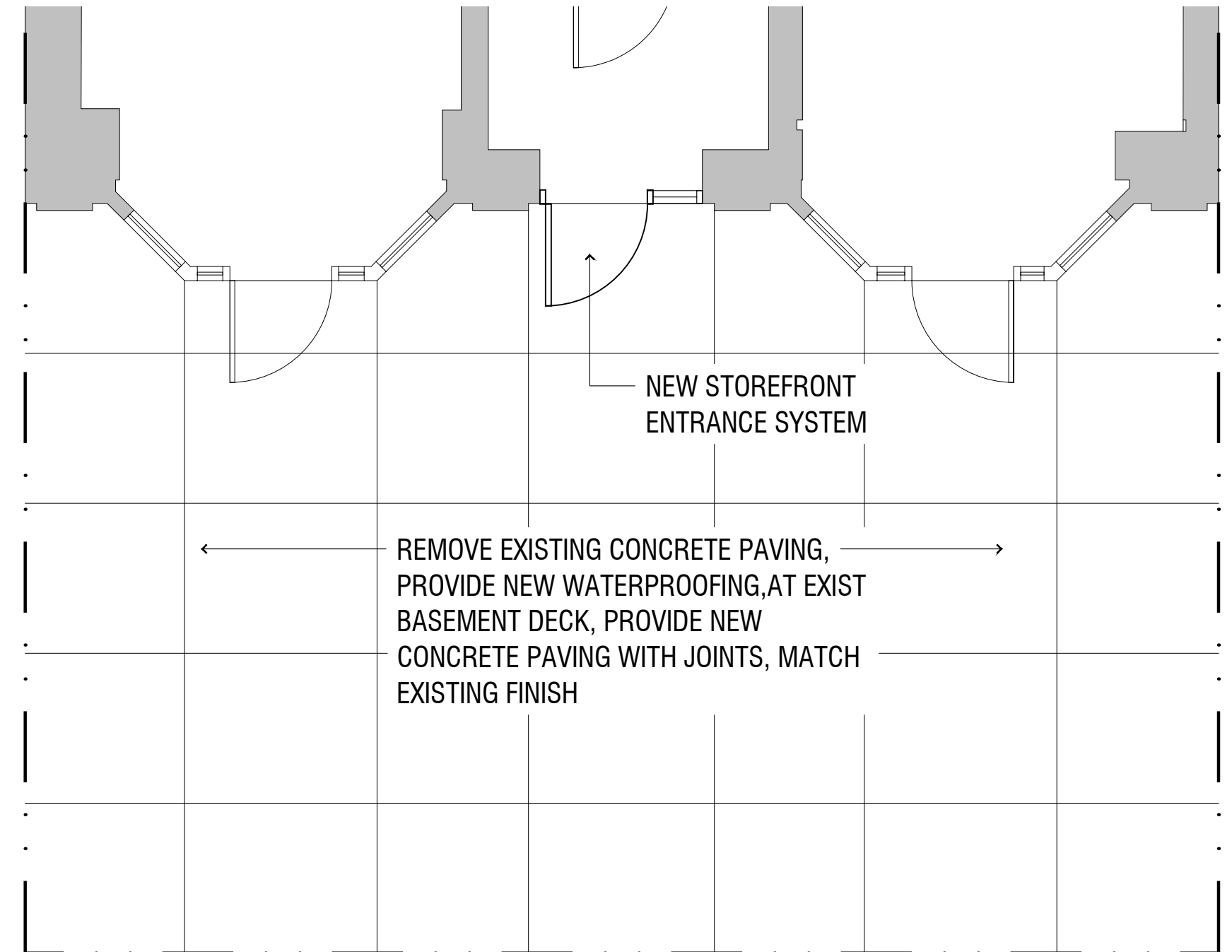
11 NEWBURY STREET - LOCUS MAP



11 NEWBURY STREET - STREET VIEW

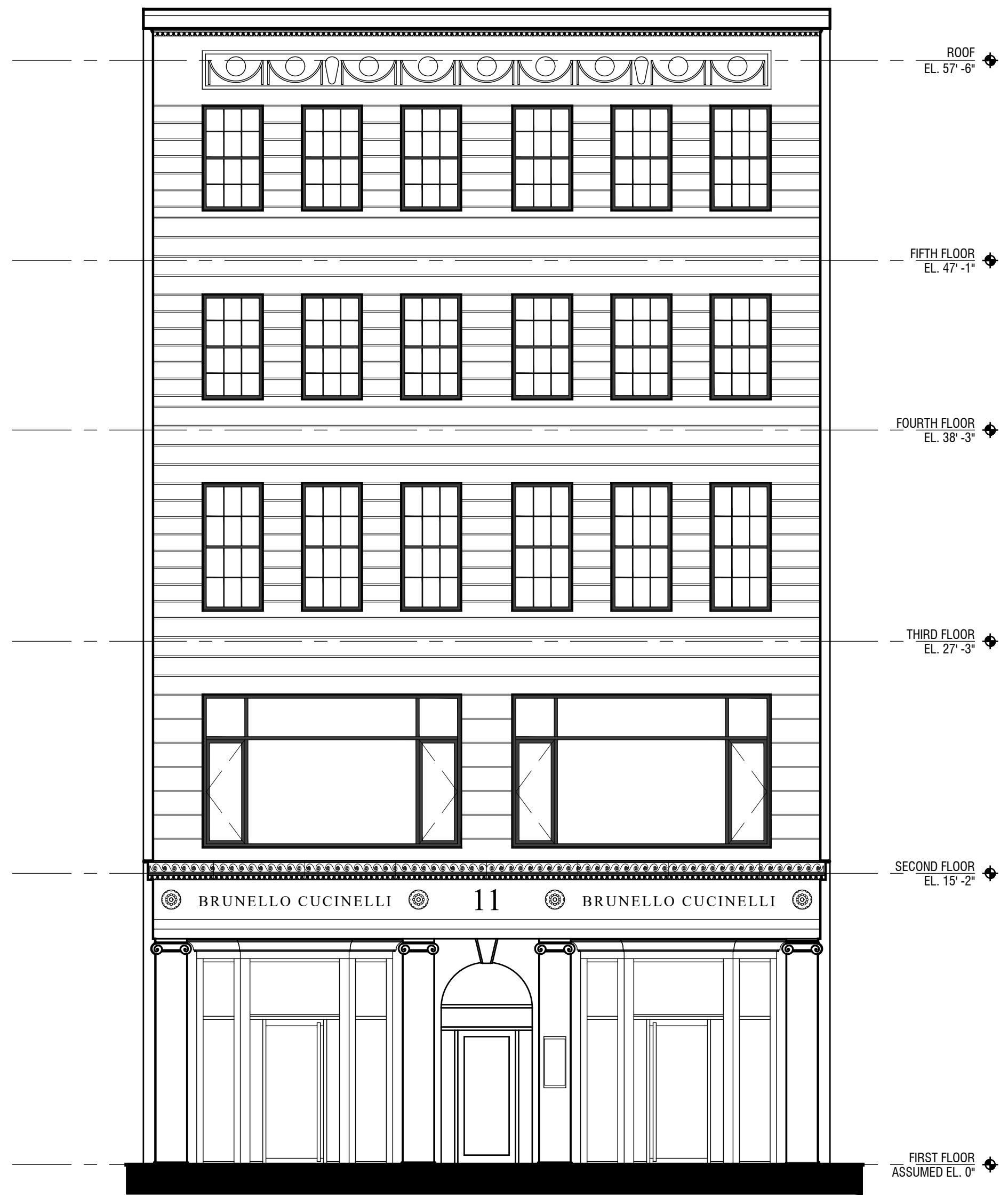


E X I S T I N G F R O N T P L A Z A

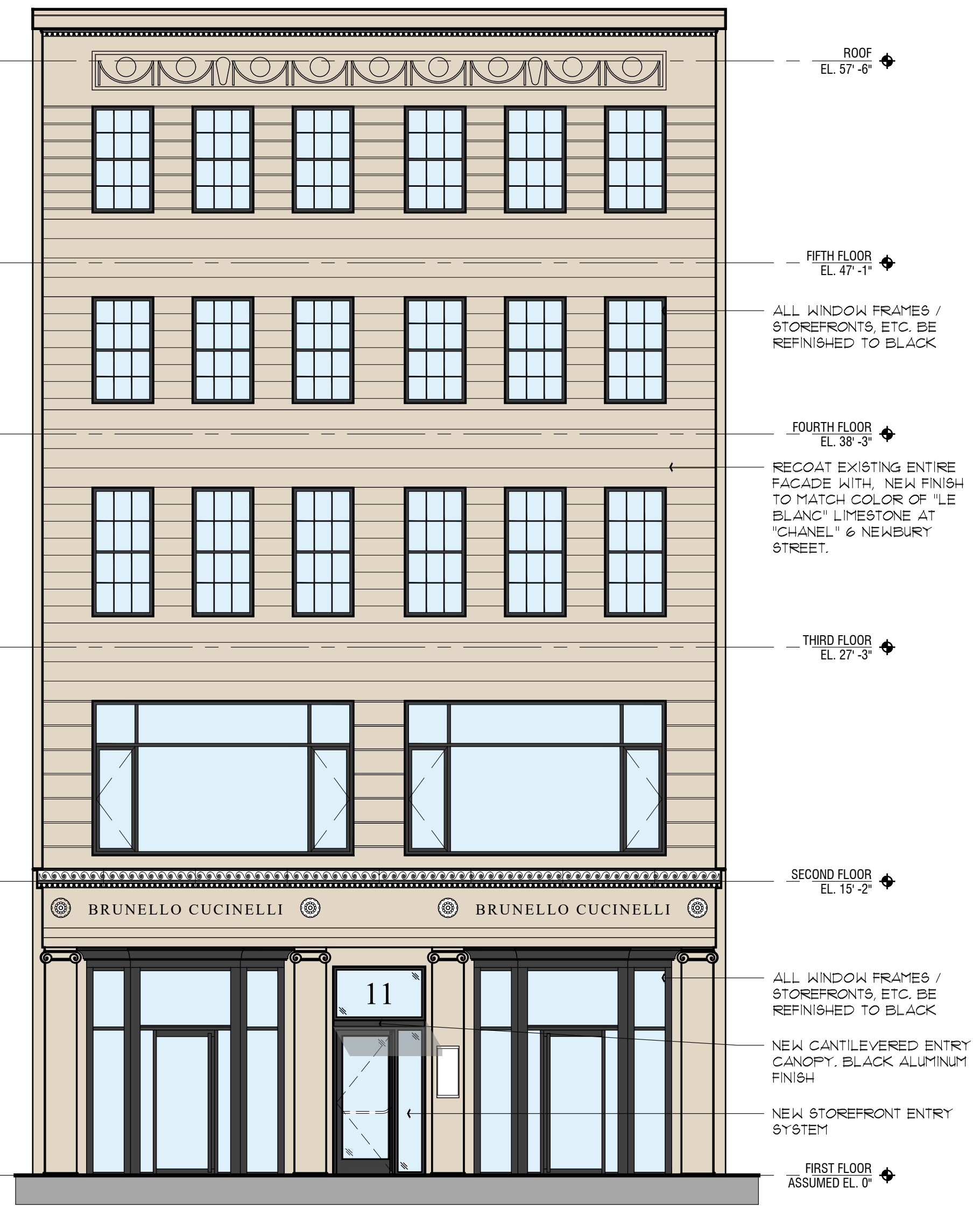


S I D E W A L K

N E W B U R Y S T R E E T



EXISTING FRONT ELEVATION



PROPOSED FRONT ELEVATION

ROOF
EL. 57'-6"

FIFTH FLOOR
EL. 47'-1"

FOURTH FLOOR
EL. 38'-3"

THIRD FLOOR
EL. 27'-3"

SECOND FLOOR
EL. 15'-2"

FIRST FLOOR
ASSUMED EL. 0"

ROOF
EL. 57'-6"

FIFTH FLOOR
EL. 47'-1"

ALL WINDOW FRAMES /
STOREFRONTS, ETC. BE
REFINISHED TO BLACK

FOURTH FLOOR
EL. 38'-3"

RECOAT EXISTING ENTIRE
FACADE WITH NEW FINISH
TO MATCH COLOR OF "LE
BLANC" LIMESTONE AT
"CHANEL" @ NEWBURY
STREET.

THIRD FLOOR
EL. 27'-3"

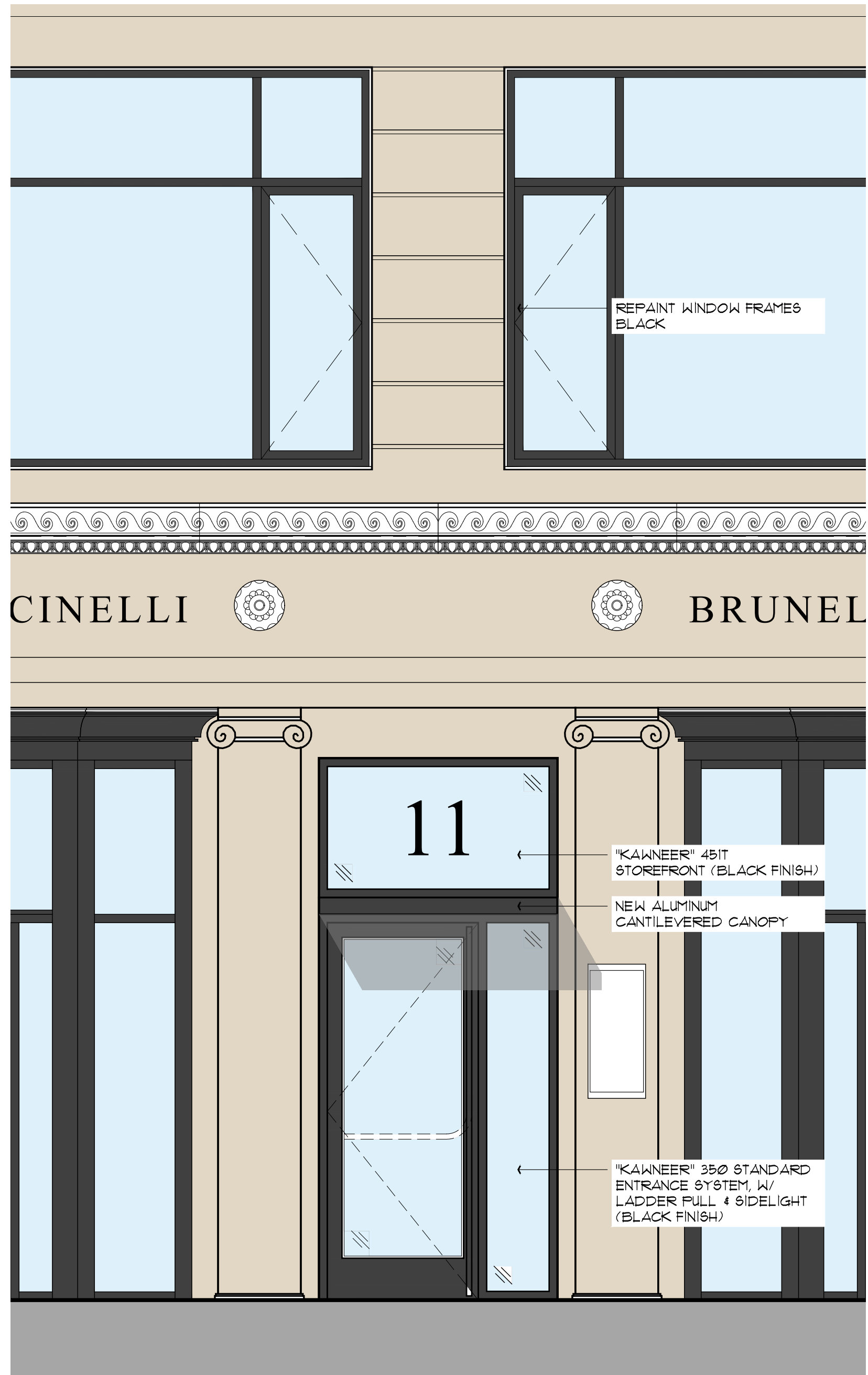
SECOND FLOOR
EL. 15'-2"

ALL WINDOW FRAMES /
STOREFRONTS, ETC. BE
REFINISHED TO BLACK

NEW CANTILEVERED ENTRY
CANOPY. BLACK ALUMINUM
FINISH

NEW STOREFRONT ENTRY
SYSTEM

FIRST FLOOR
ASSUMED EL. 0"



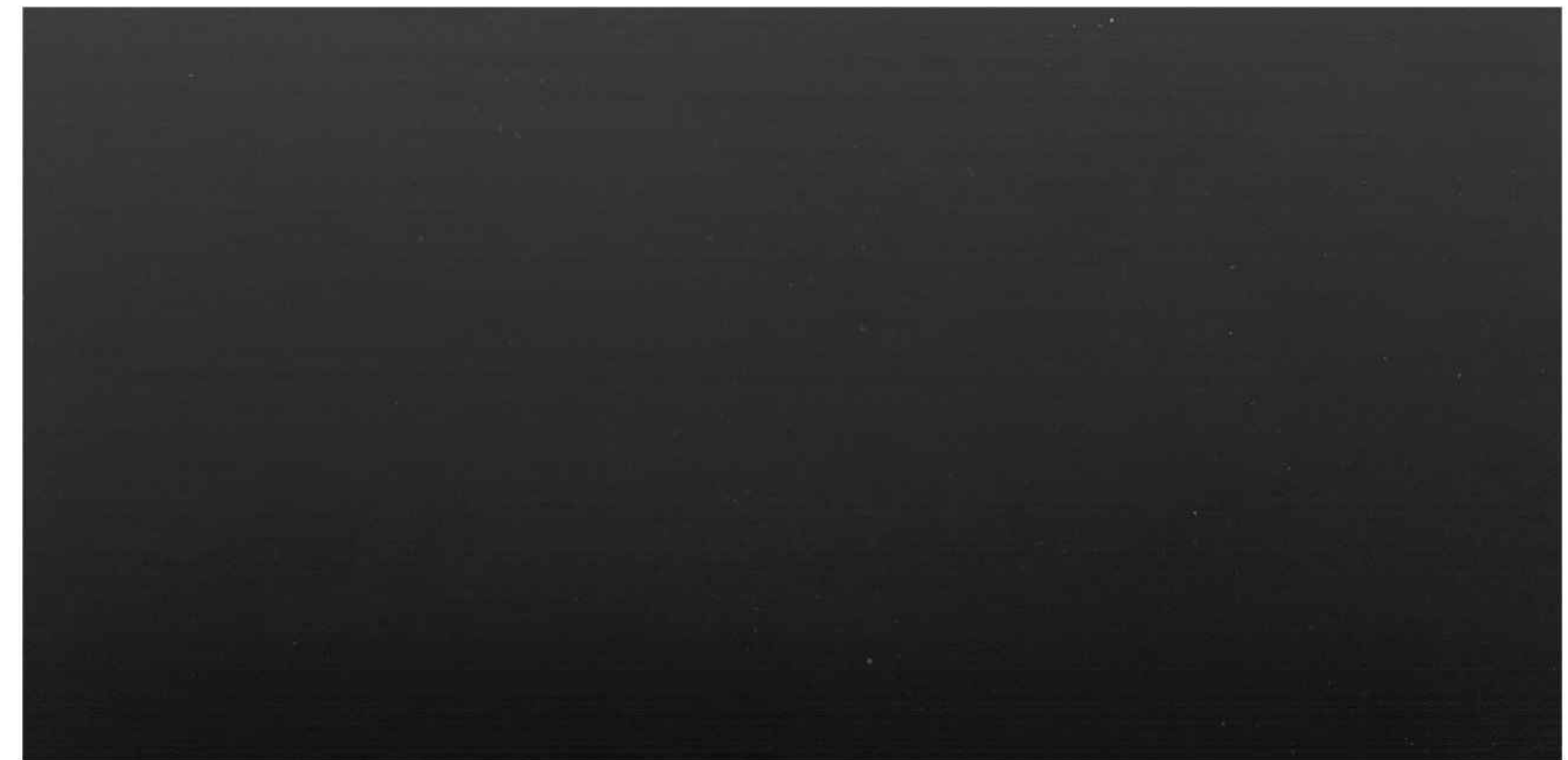
P R O P O S E D F R O N T E N T R A N C E



EXISTING VIEW FROM NEWBURY STREET



"LE BLANC" LIMESTONE (FOR FACADE COLOR ONLY)



BLACK ANODIZED ALUMINUM (AT ENTRY STOREFRONT)
WINDOW COLOR SIMILAR

M A T E R I A L E X A M P L E S