

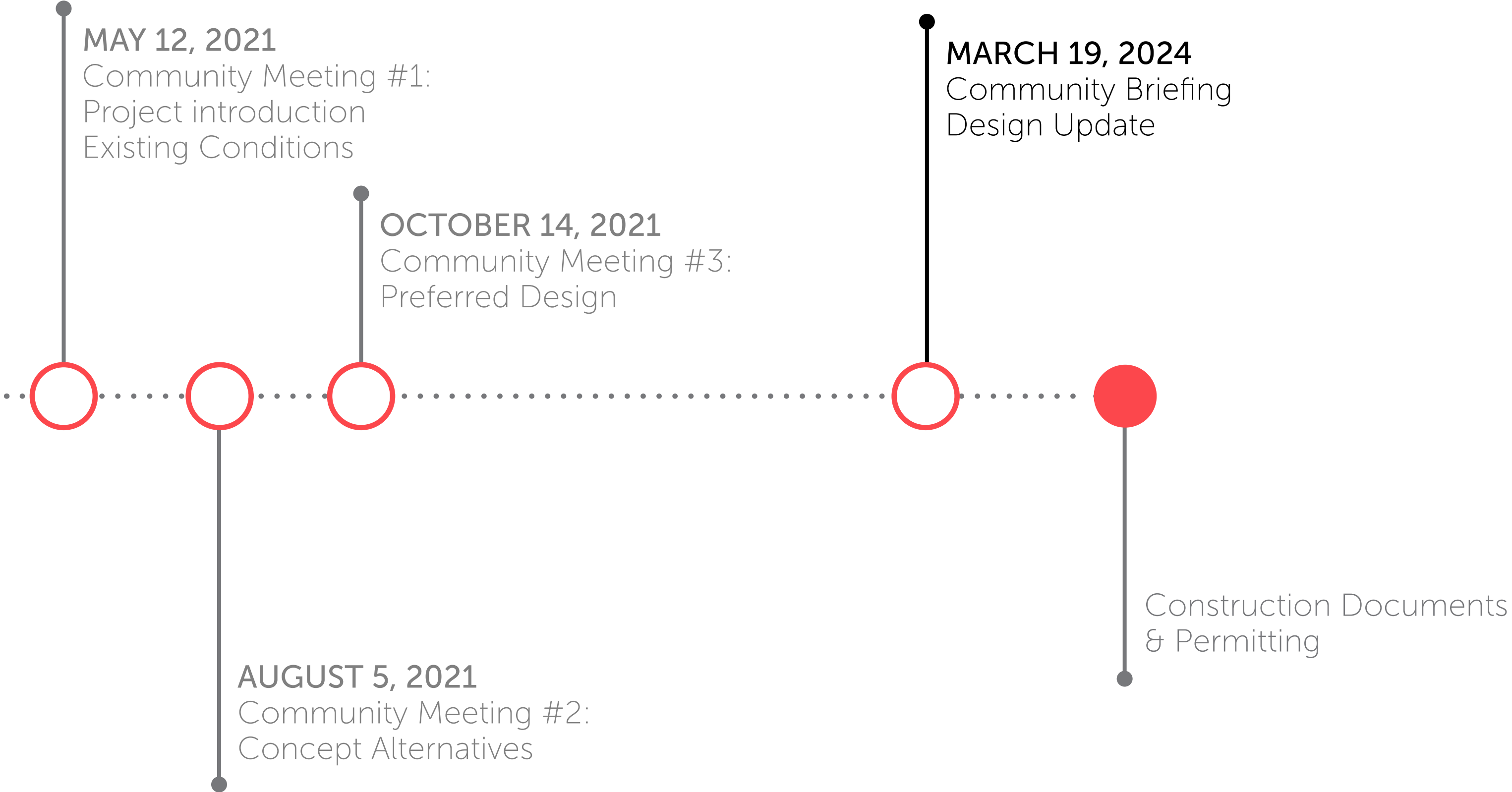
RESTORATION OF THE BAY VILLAGE NEIGHBORHOOD PARK

BOSTON LANDMARKS COMMISSION

23 AUGUST, 2024



PROJECT SCHEDULE

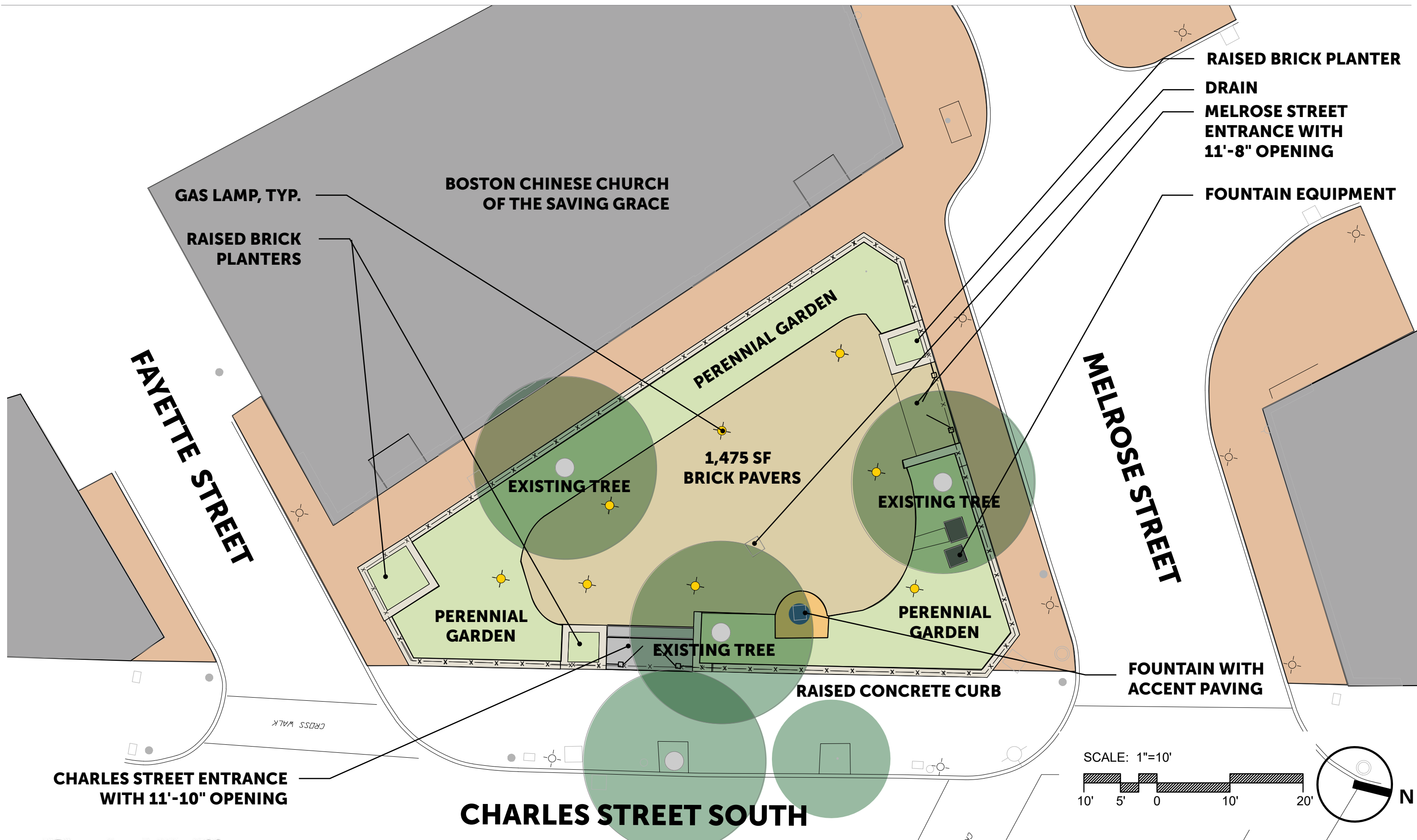


PROJECT SCOPE

- 1 RETOUCH AND REPAIR CURRENT IRON BOUNDARY FENCE
- 2 RESTORE AND REDEVELOP WATER FEATURE INTO A FULLY FUNCTIONAL WATER FOUNTAIN
- 3 INTRODUCE PERMANENT SEATING INTO THE PARK
- 4 REPAIR OR REPLACE BLACK IRRIGATION BOX
- 5 GAS-TO-ELECTRIC STREETLIGHT TRANSITION
- 6 INTRODUCE ELECTRICITY FOR SEASONAL LIGHTING



CURRENT SITE PLAN



EXISTING CONDITIONS



PLAN - FINAL CONCEPT DESIGN



DESIGN CHANGE COMPARISONS - SITE FURNISHINGS

PERMANENT SEATING



Granite Block Seating



Boston Parks & Recreation steel strap bench

PLANT BED EDGE



6" Wide granite curb

PAVING MATERIAL



Existing brick paving



New wire struck accessible brick paving



Existing gas lamps



Updated LED light to match historic light

B GAS-TO- ELECTRIC STREETLIGHT RETROFIT

What you need to know

BACKGROUND AND GOALS

There are approximately 2,800 natural gas streetlights, primarily in the Beacon Hill, Bay Village and Back Bay neighborhoods.

This gas-to-electric streetlight retrofit is the continuation of a citywide engagement process. With this retrofit, we will develop a path forward to reach our environmental goals, while preserving Boston's historic character.

The City of Boston's Renew Boston Trust program is working with Public Works to retrofit existing streetlights to:

- enhance energy efficiency,
- save money, and
- reflect the historical integrity of each neighborhood.

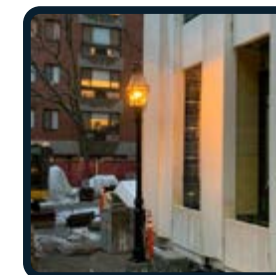
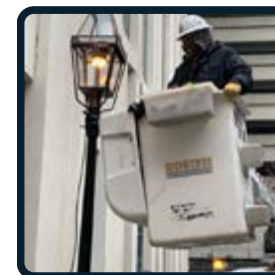
ENVIRONMENTAL IMPACT

Retrofitting natural gas streetlights to use electricity is necessary to meet the City's carbon neutrality goal. In Boston, just 4% of the city's street lights are gas lit but they account for 37% of the emissions from street lights.

Two gas lamps burn as much gas each year as the average house in MA.*



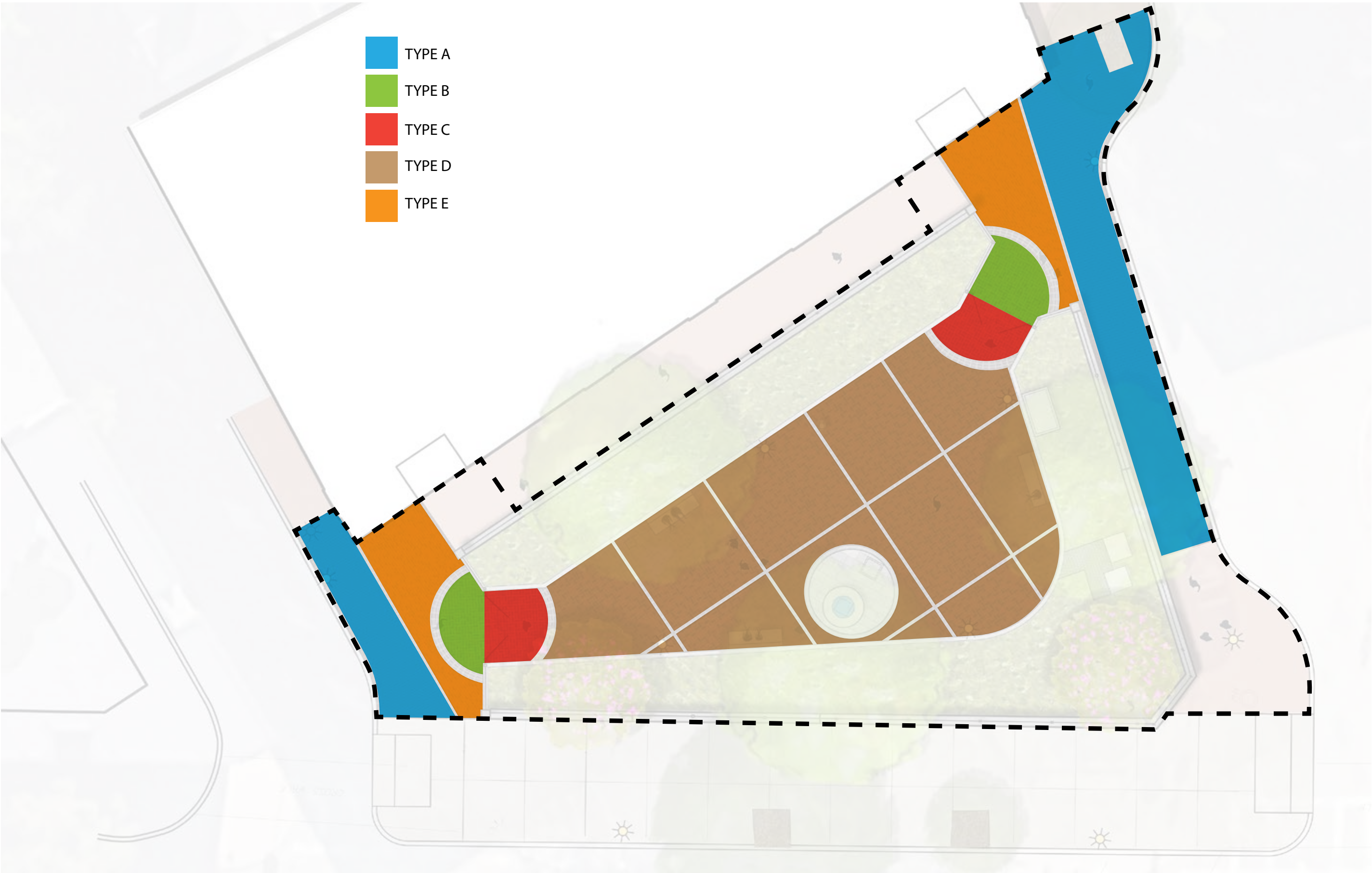
Based on citywide average for gas lamp fuel consumption. Data from National Grid and MA DOER.



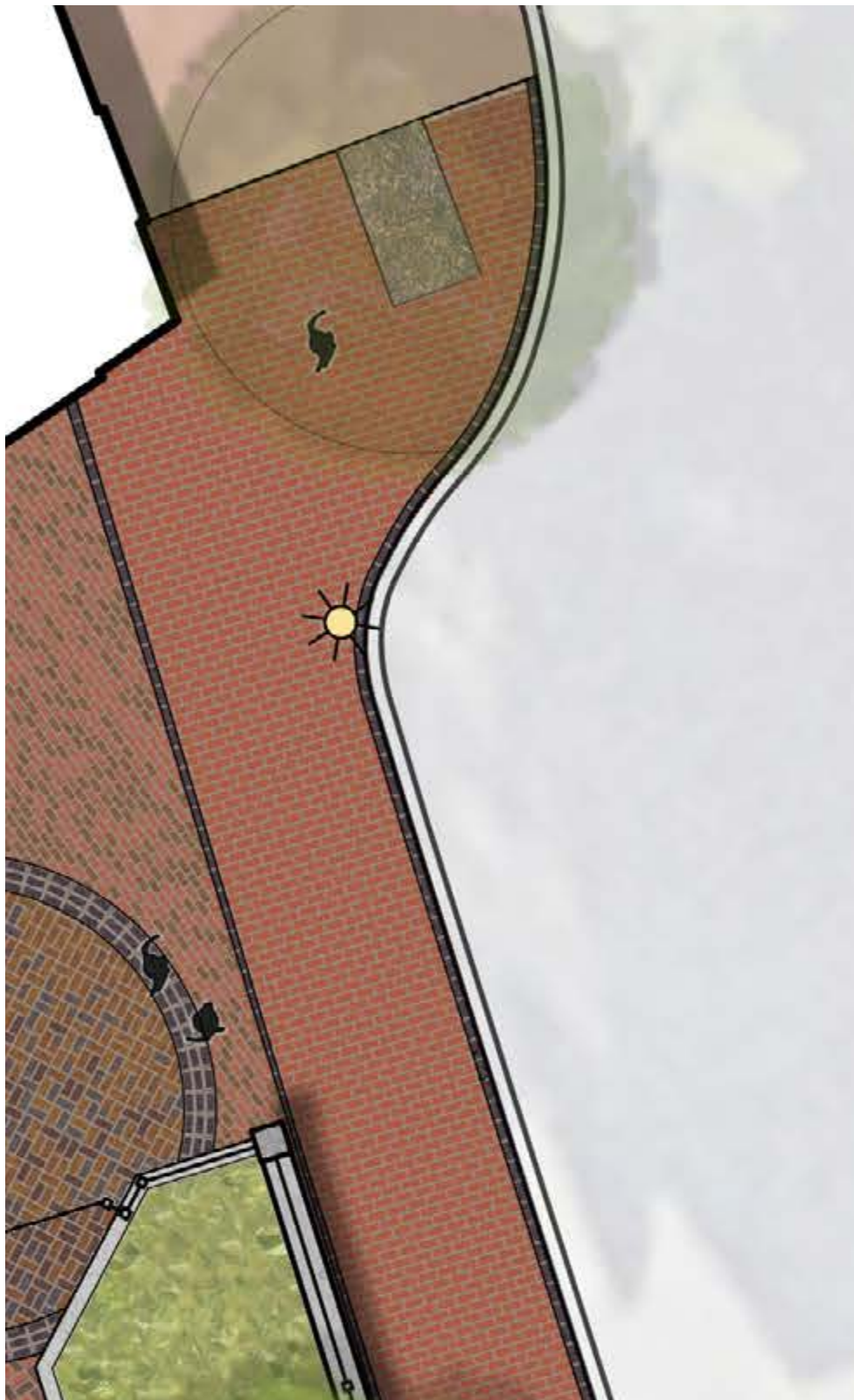
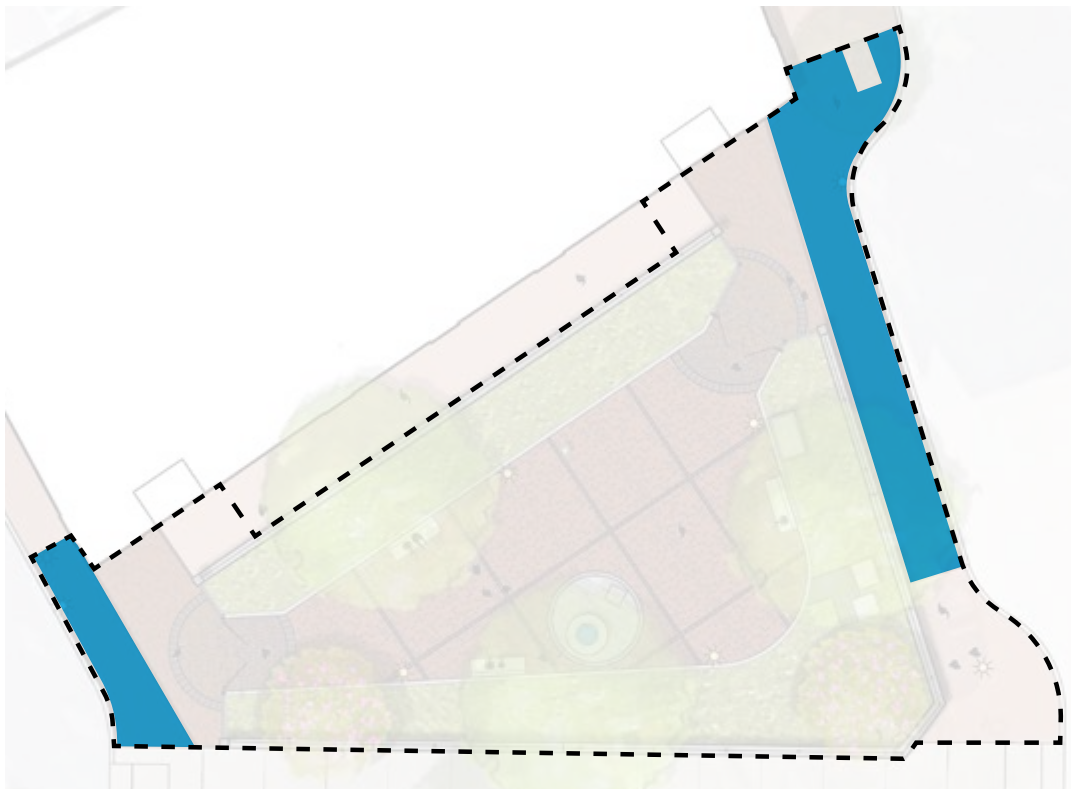
BRICK PAVER COLOR STRATEGY



BRICK COLOR ZONES



PAVER COLOR TYPE A



PATTERN: Running Bond



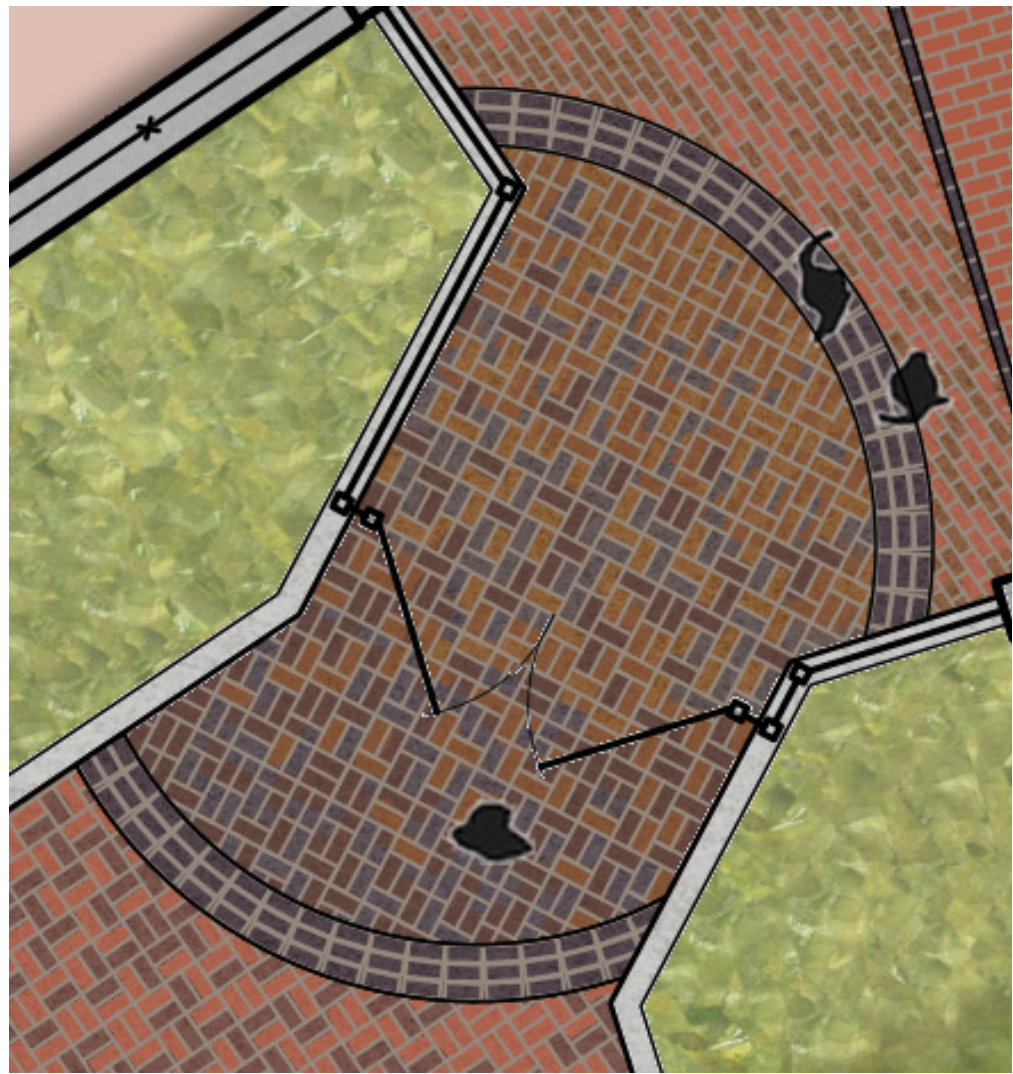
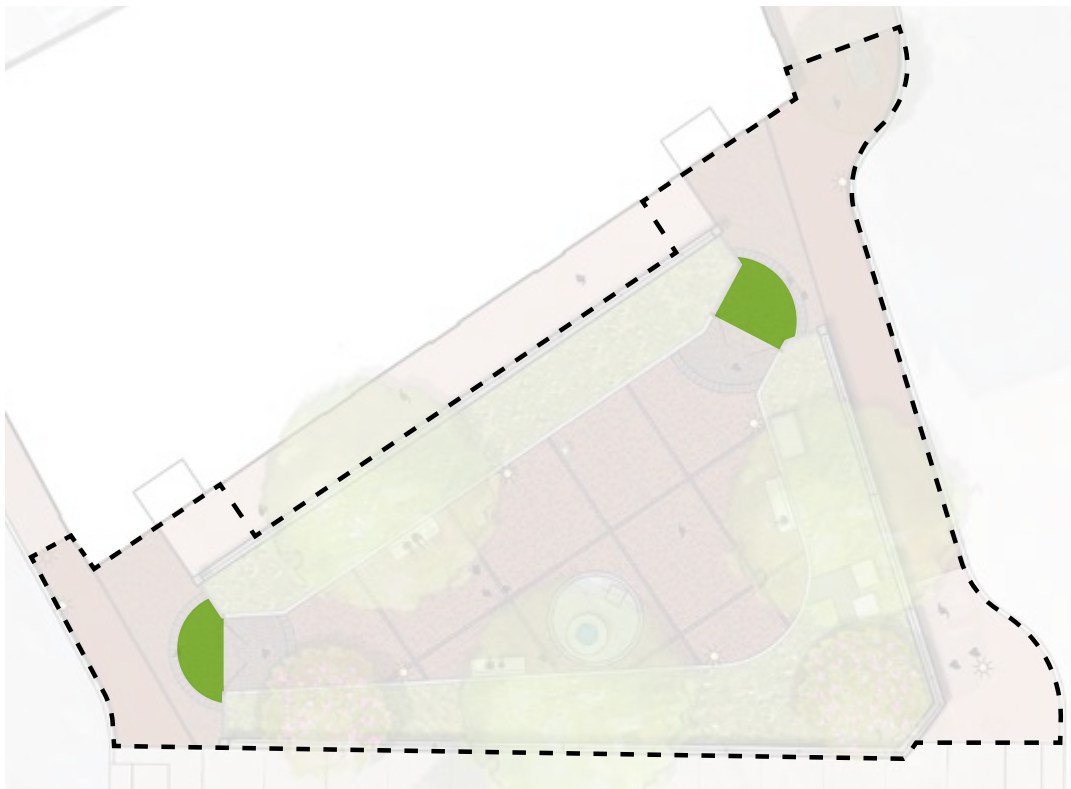
100% Red Blend

BANDING (all)



100% Dark Ironspot

PAVER COLOR TYPE B



PATTERN: Basket Weave



50% Medium Ironspot

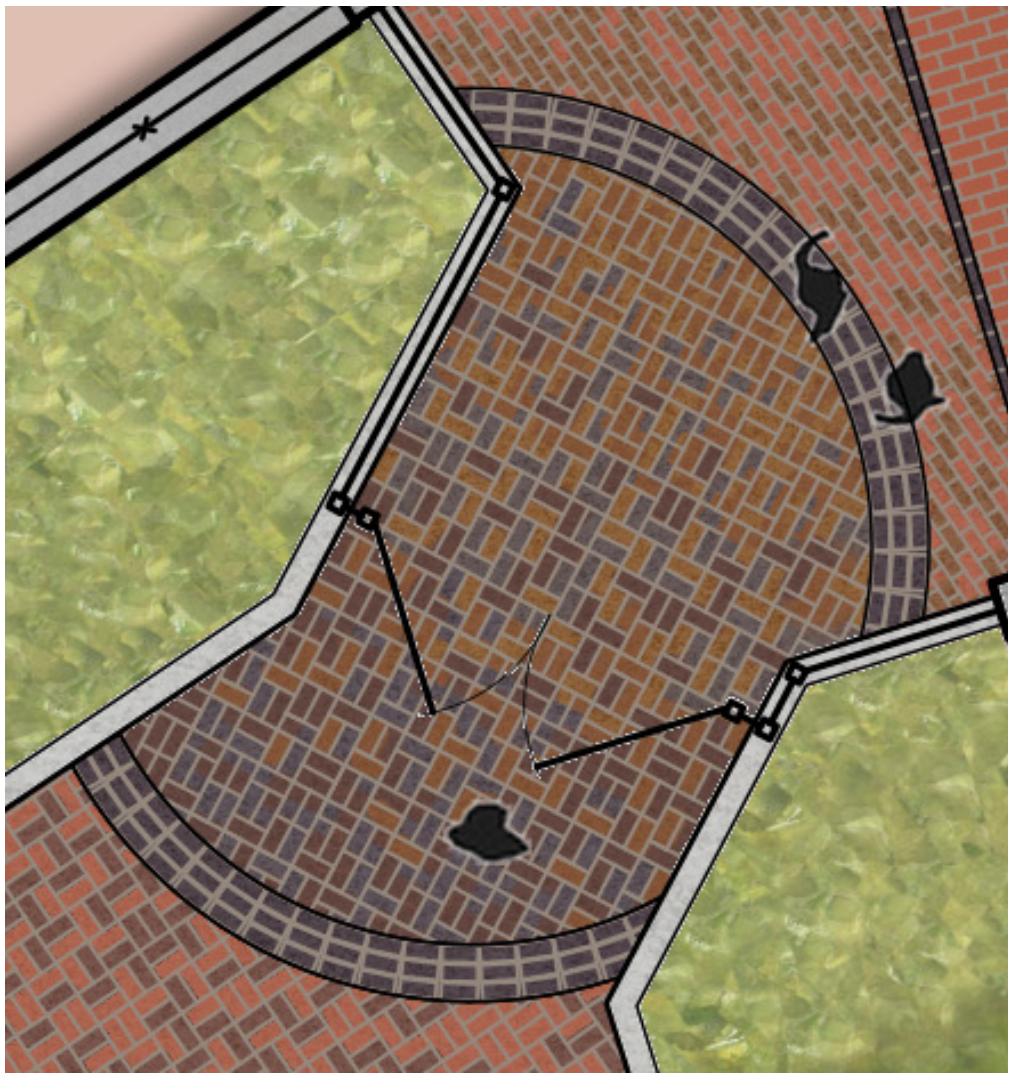
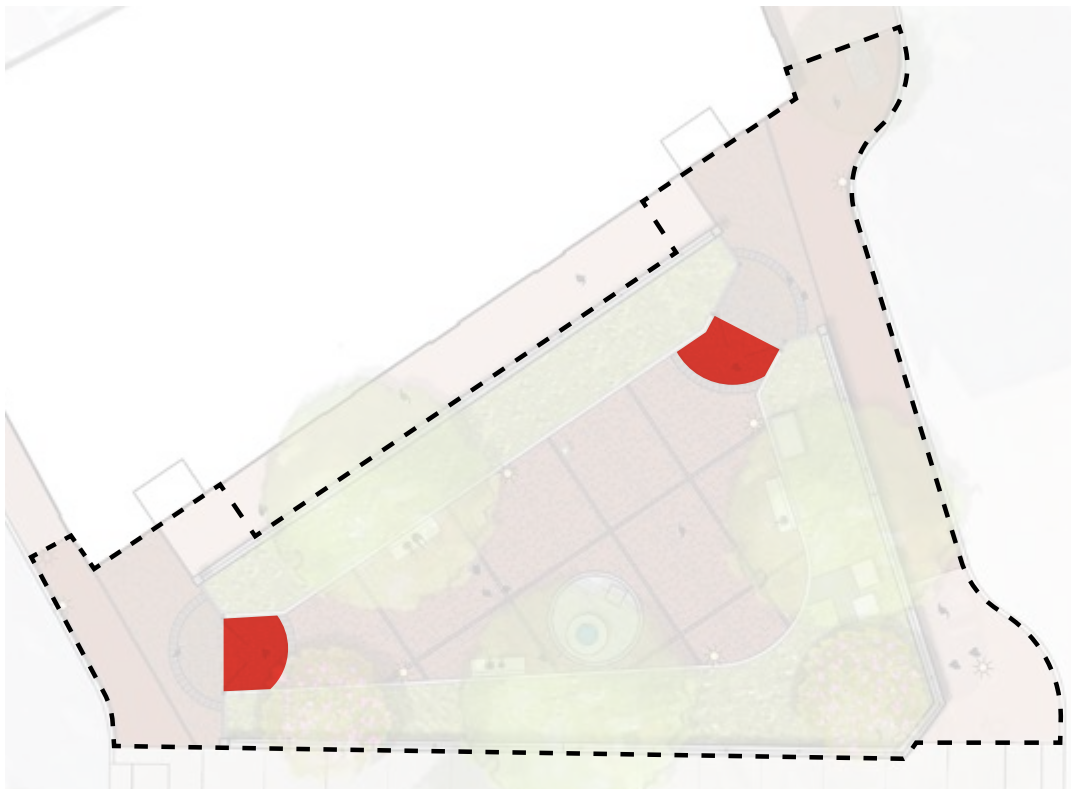


40% Coppertone



10% Bordeaux Blend

PAVER COLOR TYPE C



PATTERN: Basket Weave

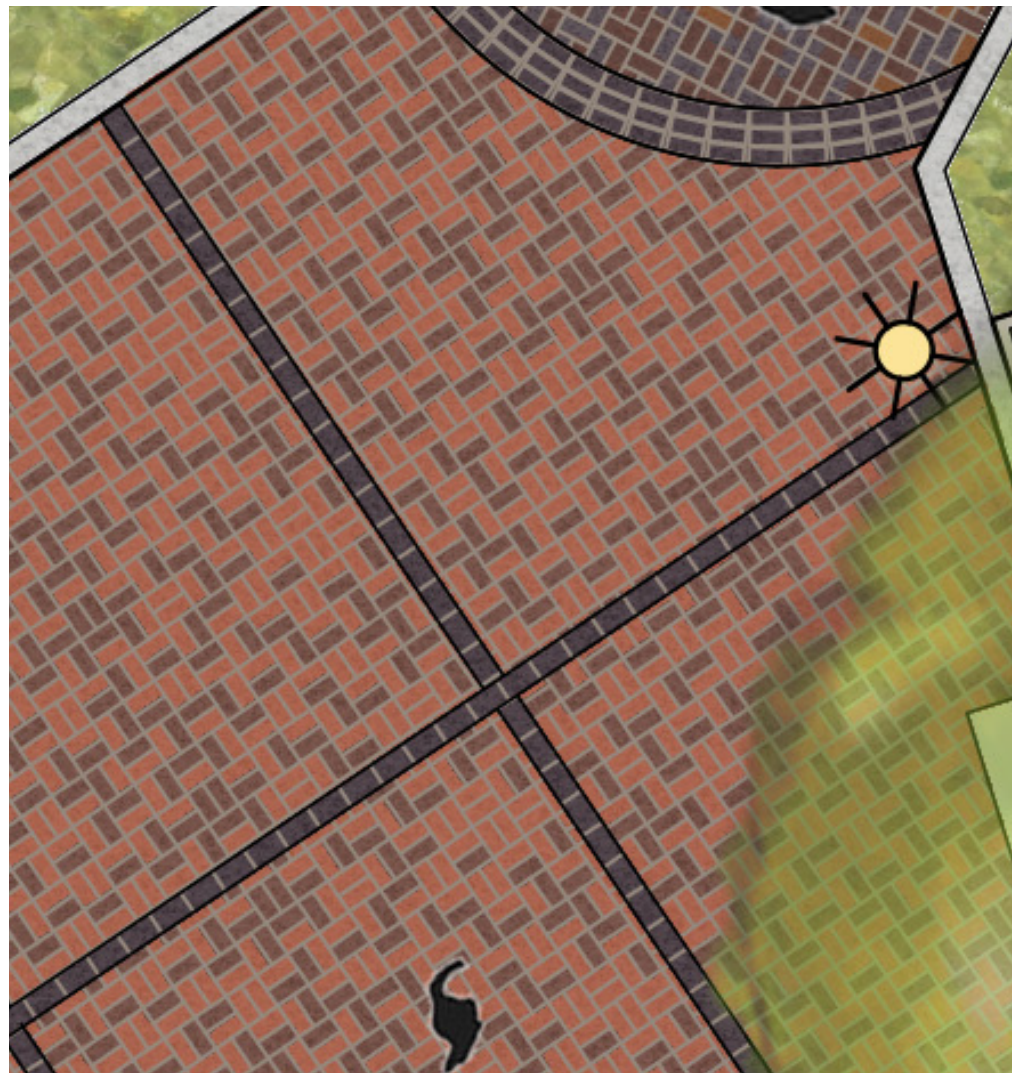
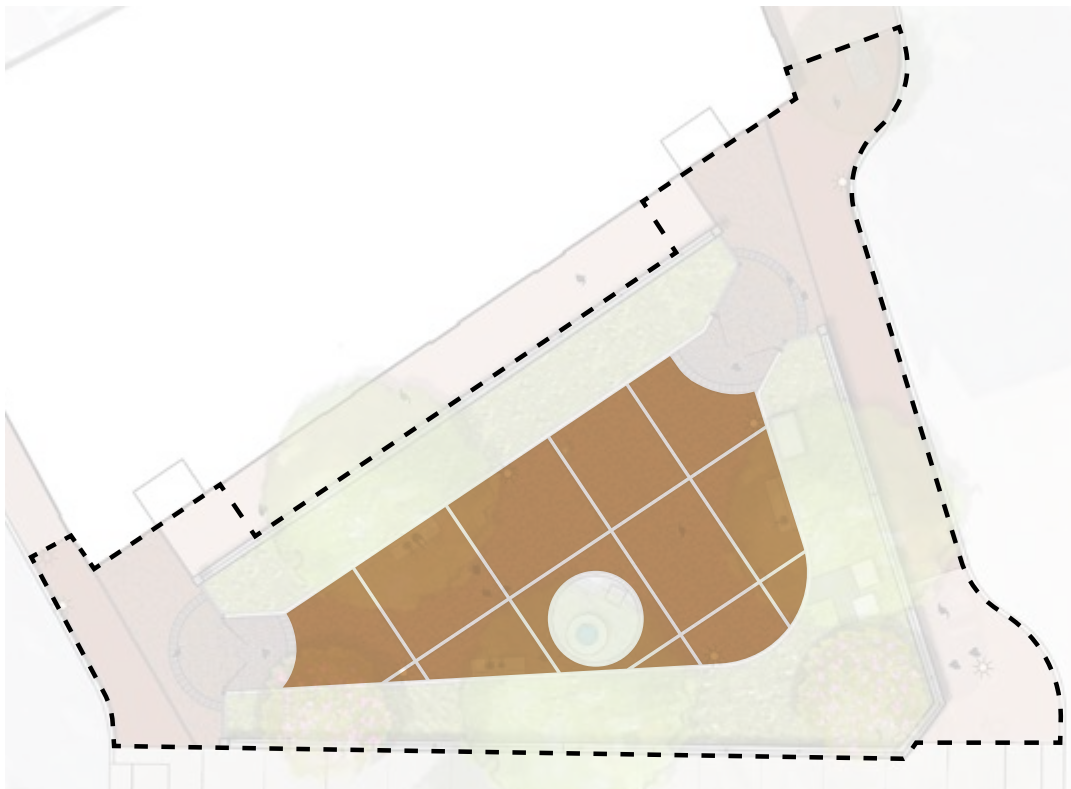


70% Burgandy Blend



30% Bordeaux Blend

PAVER COLOR TYPE D



PATTERN: Basket Weave

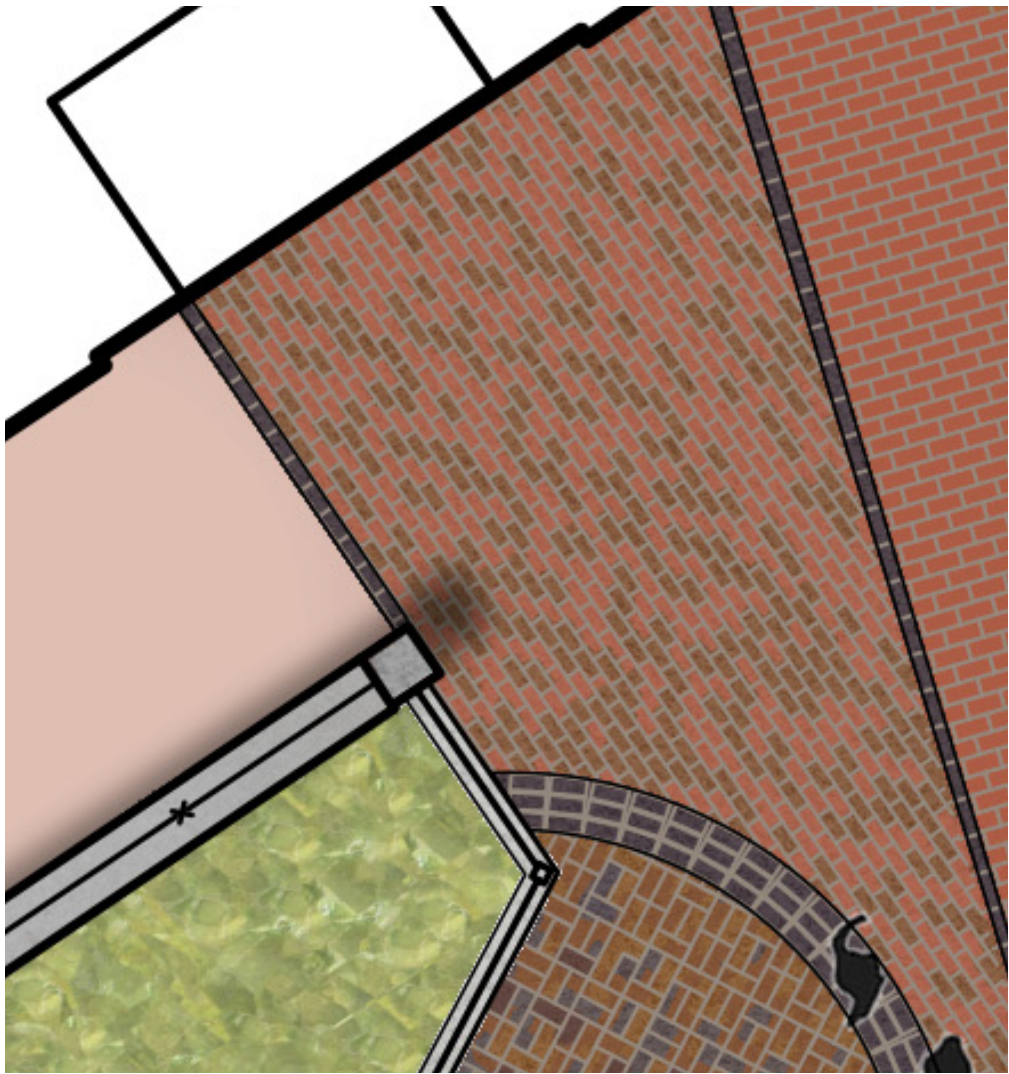
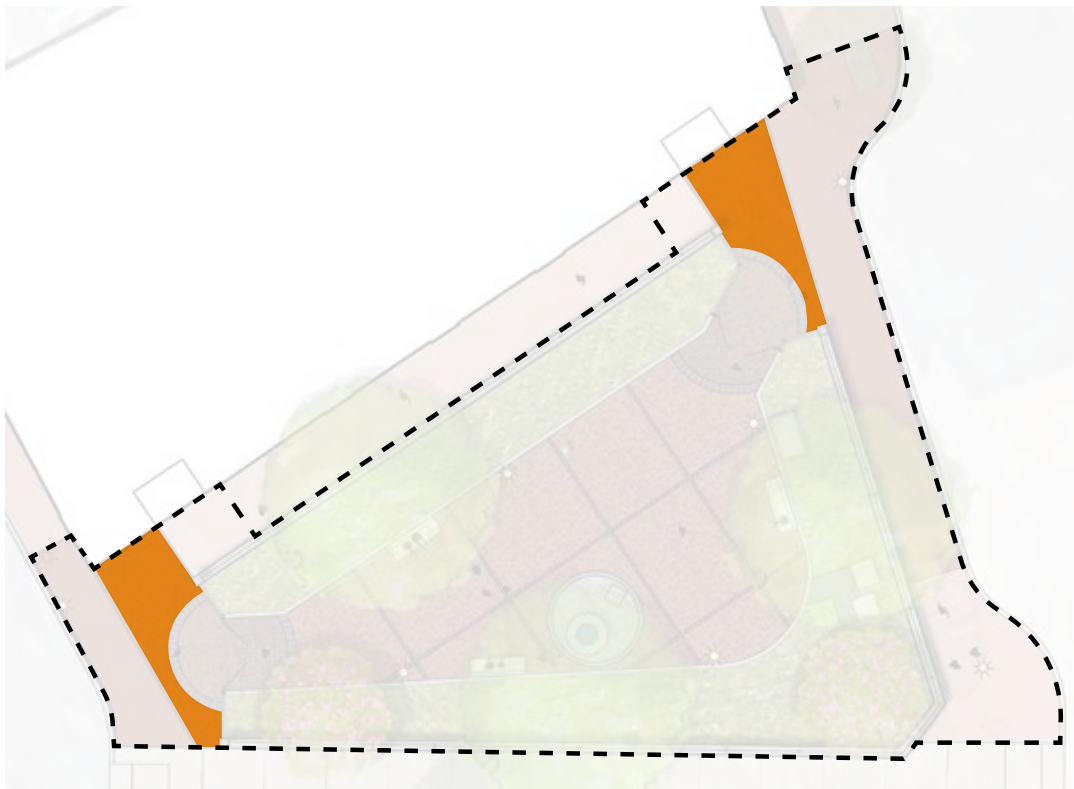


50% Red Blend



50% Burgandy Blend

PAVER COLOR TYPE E



PATTERN: Running Bond



50% Red Blend



50% Medium Ironspot