

DRAFT



White Stadium

BOSTON LANDMARKS SUBCOMMITTEE MEETING

May 29, 2024

PROGRESS RENDERING



DRAFT



NWSL BOSTON

PROGRESS RENDERING

Able
company

Stantec

MOODY•NOLAN

vhb

HS

HOWARD STEIN HUDSON

HLB



1885

Frederick Law Olmsted

Naturalistic
Curvilinear, winding pathways
Intentional experiences of enclosure, openness, and vistas
Natural New England materials - stone, wood, plantings

1949

Desmond & Lord Architects

Mid-Century
Art Deco and Bauhaus elements
Symmetrical, simple geometric forms
White cast-in-place concrete

WHITE STADIUM REDESIGN

2019-current

Franklin Park Action Plan + Public Process

A strategic vision for the future of Franklin Park that advocates for thoughtfully guided, community-driven improvements grounded in a deep understanding of its historic fabric and ecological systems. – Mayor Wu

AGENDA

RECAP OF 5/14 SUBCTE MEETING + VIDEO & RESPONSES TO COMMENTS:

- Can you consider other **alternatives to the stone dust** at the Grove?
- Appreciate the focus on **technical aspects** of preservation & protection of the clamshell wall by RDH; would like to see more detail on the **design interface between new and old**
- **Canopy** evolution
- Lighting/media & signage - approaches are evolving and will be presented in future Subcte meetings

NEXT STEPS

WHITE STADIUM | DESIGN UPDATES

PATH MATERIALS, PAVING IN THE GROVE

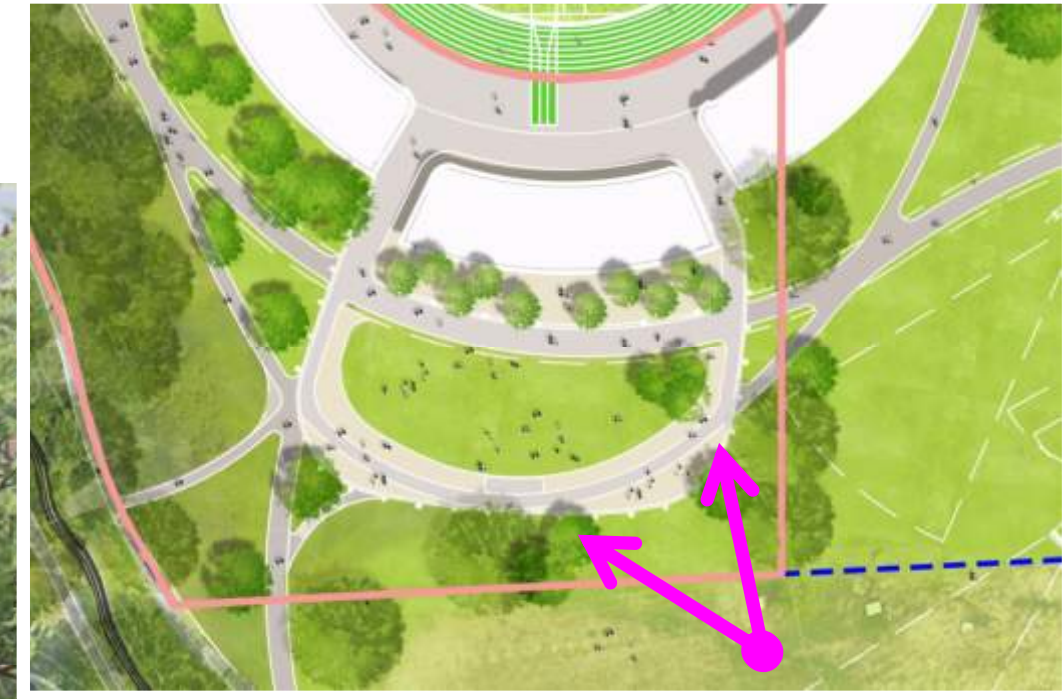


Reinforced Natural Turf Edge
(Fire Truck Access)

Asphalt Paving

Secondary Material

Granite Sett Edge



WHITE STADIUM | DESIGN UPDATES

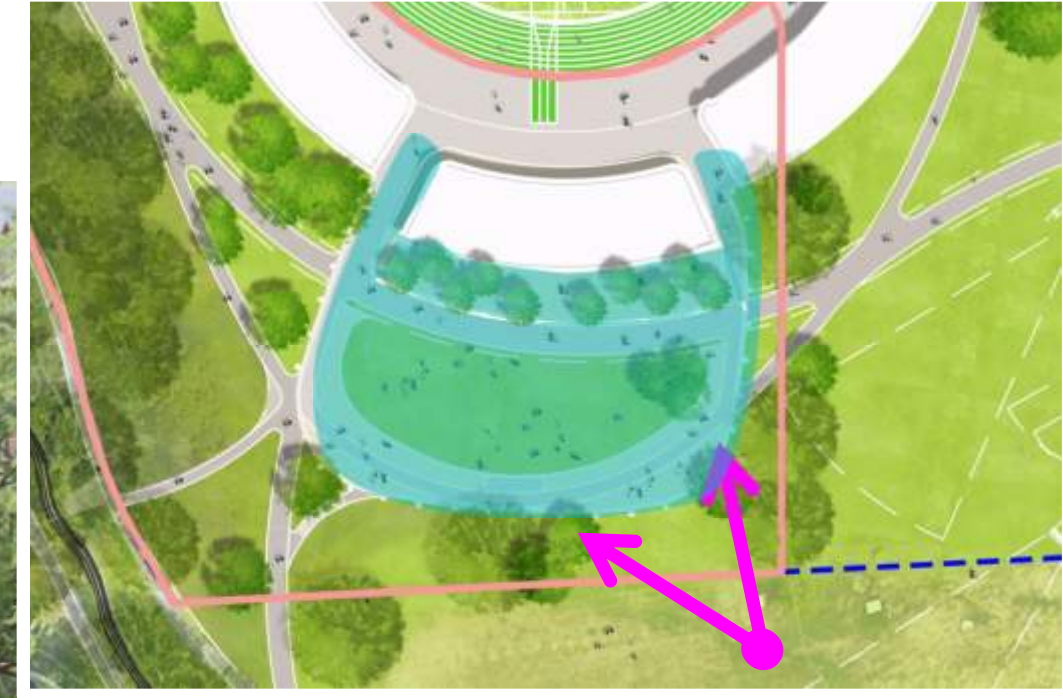
TEMPORARY FENCING IN THE GROVE



Permanent Leaning Rails at South Crescent Building

WHITE STADIUM | DESIGN UPDATES

TEMPORARY FENCING IN THE GROVE



Slender Posts with Temporary Chain or Rope for Small Events

WHITE STADIUM | DESIGN UPDATES

TEMPORARY FENCING IN THE GROVE



Temporary Fencing for
Ticketed Events

AGENDA

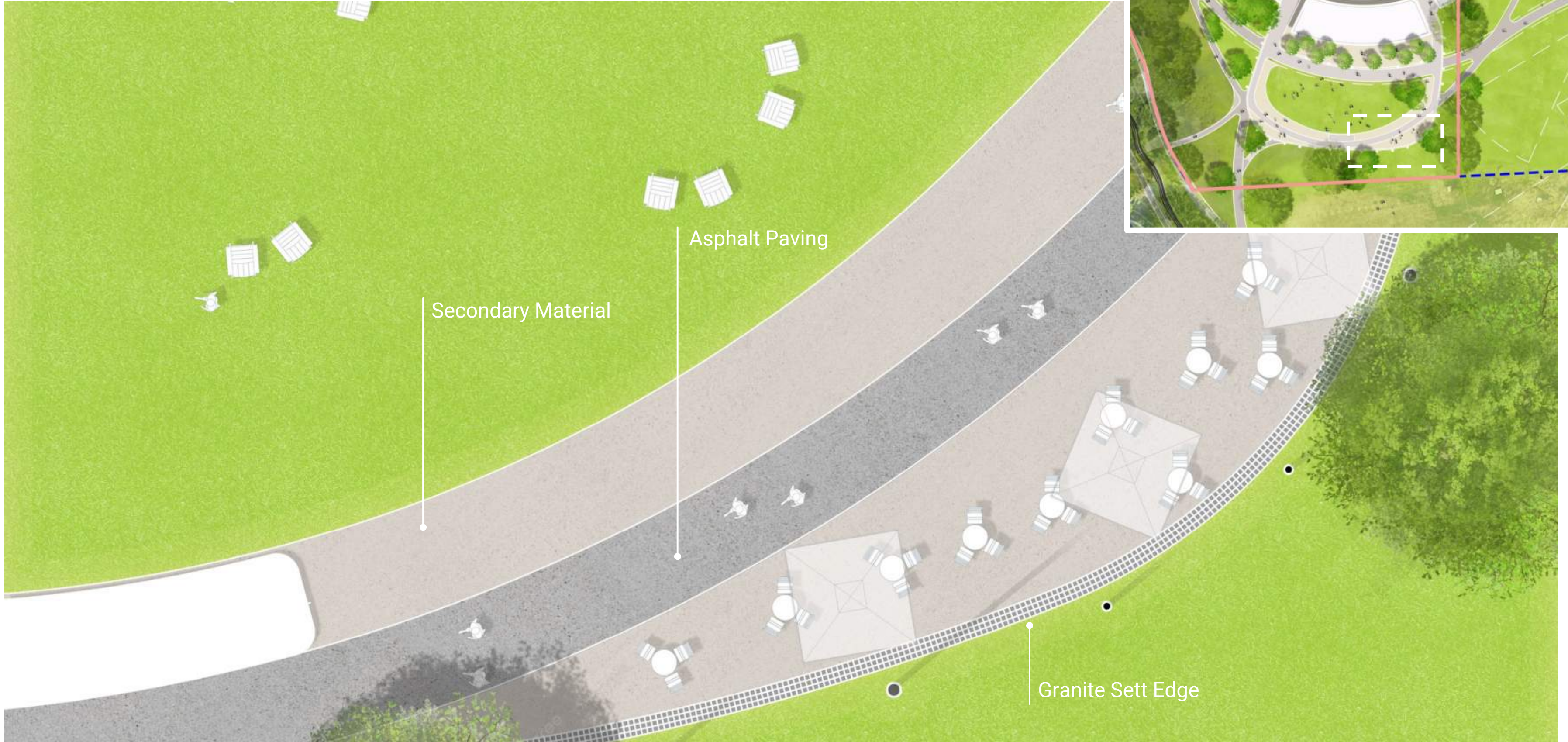
RECAP OF 5/14 SUBCTE MEETING + VIDEO & RESPONSES TO COMMENTS:

- Can you consider other alternatives to the stone dust at the Grove?
- Appreciate the focus on **technical aspects** of preservation & protection of the clamshell wall by RDH; would like to see more detail on the **design interface between new and old**
- **Canopy** evolution
- Lighting/media & signage - approaches are evolving and will be presented in future Subcte meetings

NEXT STEPS

WHITE STADIUM | DESIGN UPDATES

PATH MATERIALS, PAVING IN THE GROVE

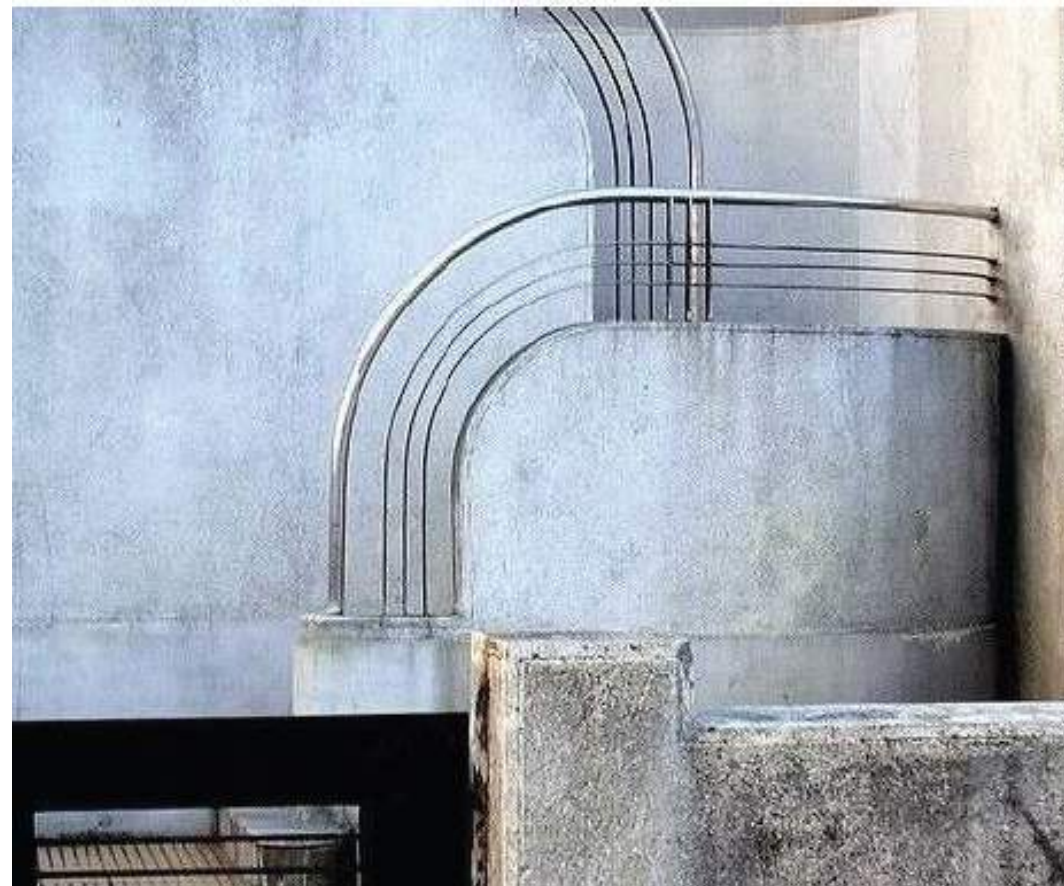
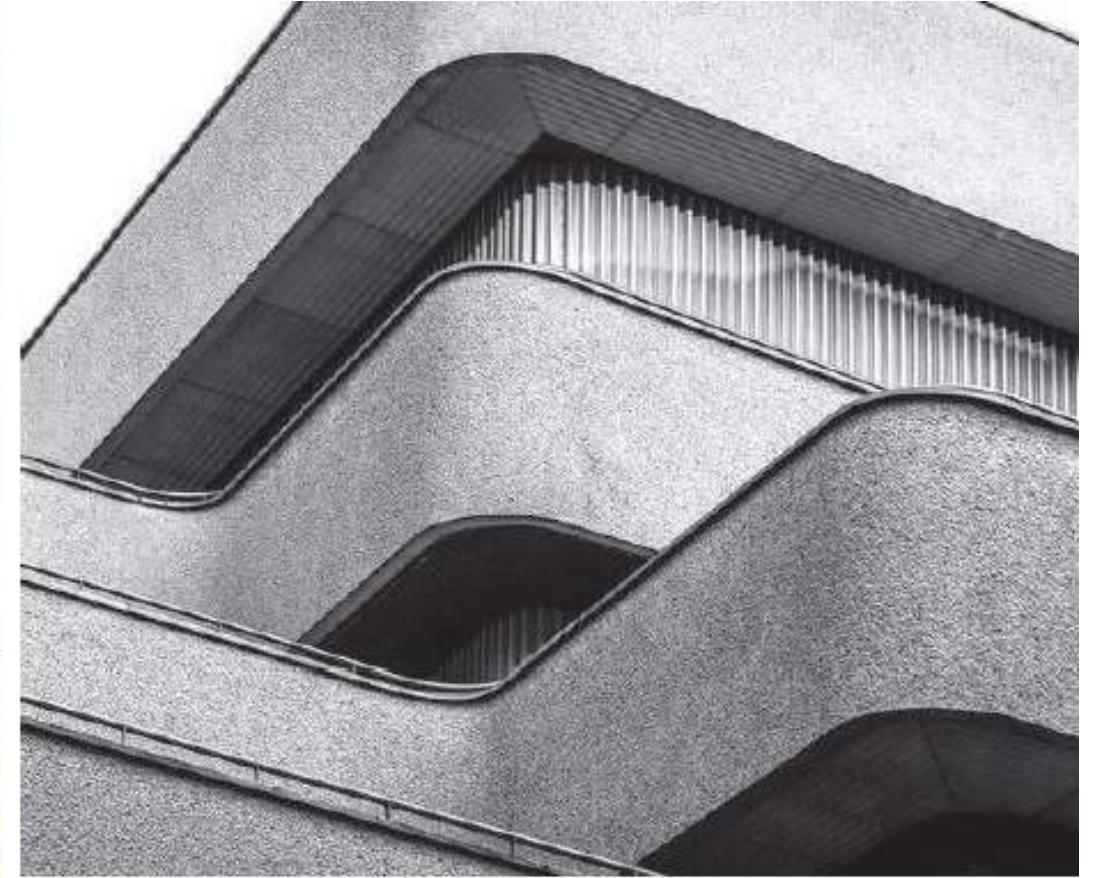


WHITE STADIUM | DESIGN UPDATES
1/23, 5/03 BLC MEETING : REVIEW OF EXISTING CONDITIONS



WHITE STADIUM | DESIGN UPDATES
RELATIONSHIP OF OLD TO NEW

draft



WHITE STADIUM | DESIGN UPDATES
RELATIONSHIP OF OLD TO NEW

draft



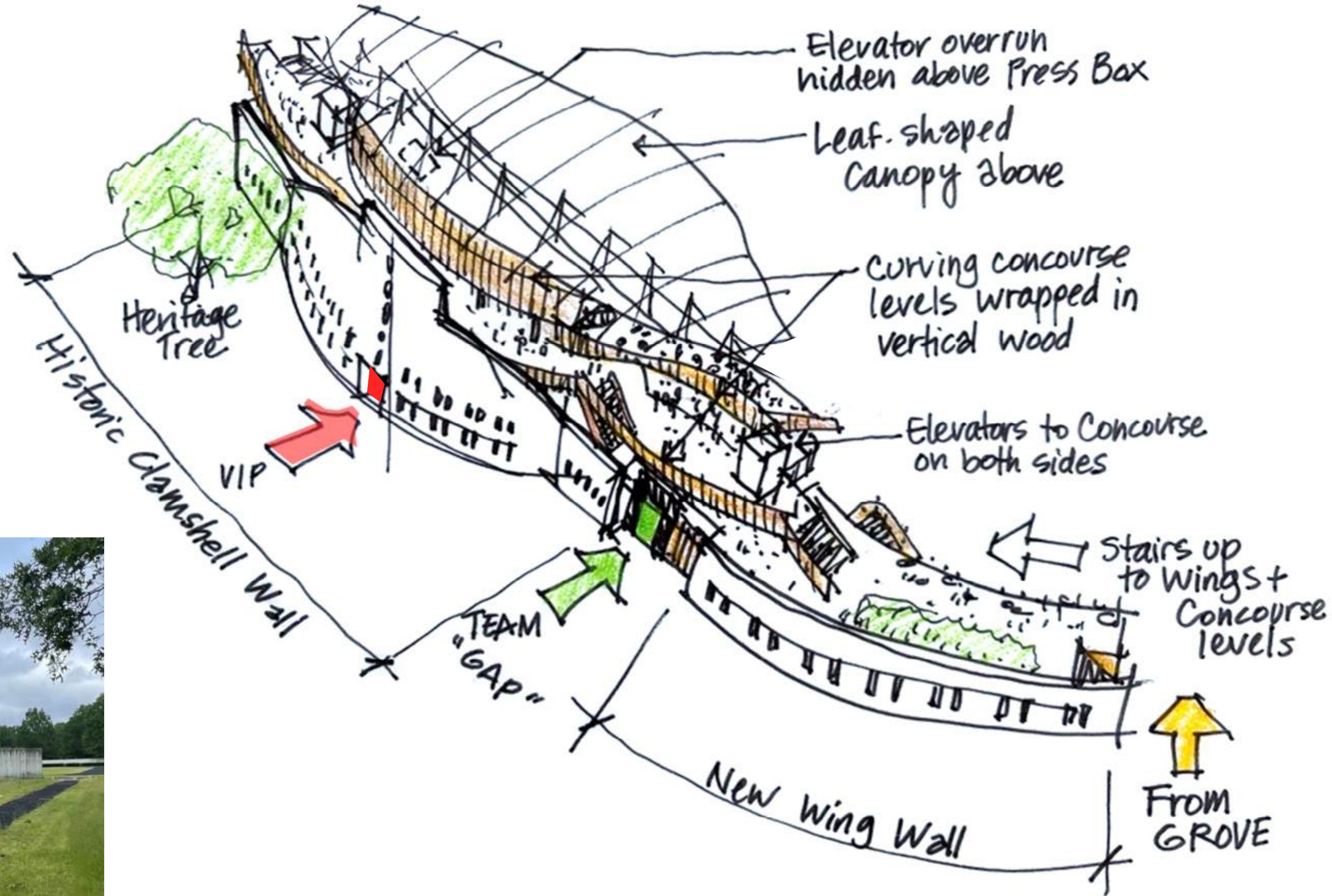
WHITE STADIUM | DESIGN UPDATES

RELATIONSHIP OF OLD TO NEW

draft



- o 'Clamshell' wall becomes part of the white outer shell – just as the white walls currently are
- o Similar approach as existing but more permeable

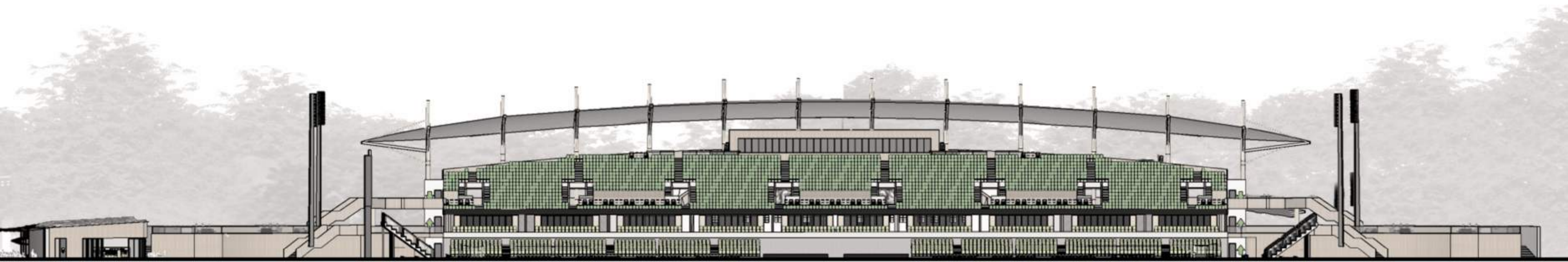


WHITE STADIUM | DESIGN UPDATES
RELATIONSHIP OF OLD TO NEW

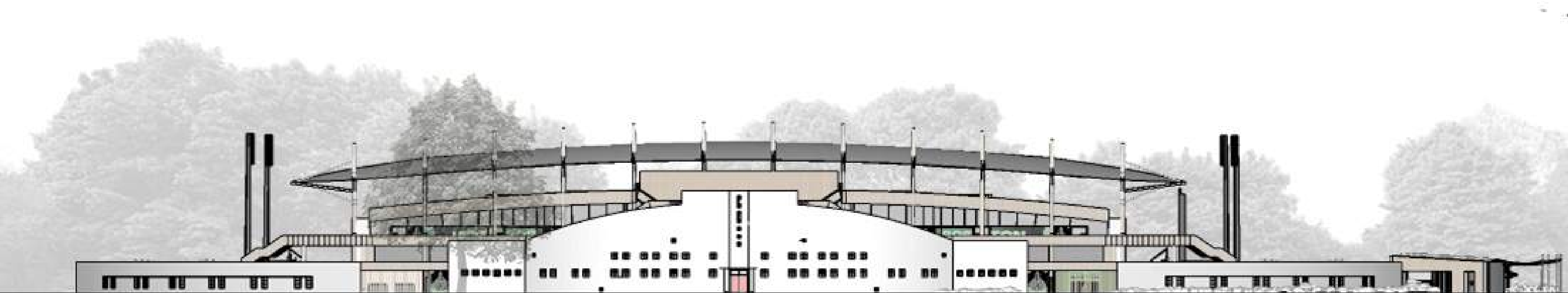
draft



WHITE STADIUM | DESIGN UPDATES
RELATIONSHIP OF OLD TO NEW



EAST ELEVATION

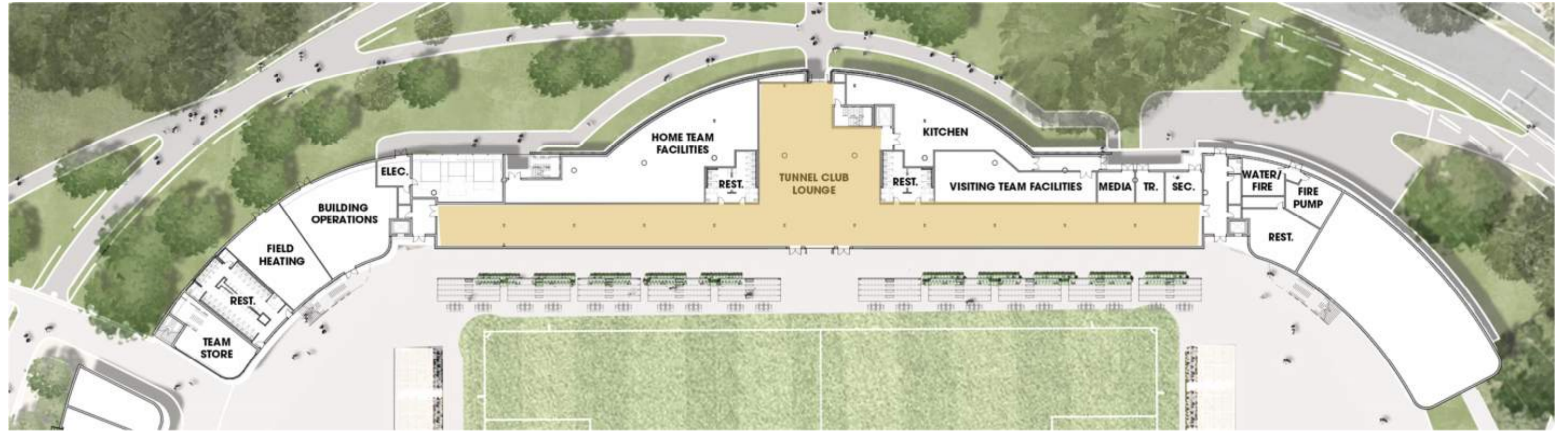


WEST ELEVATION

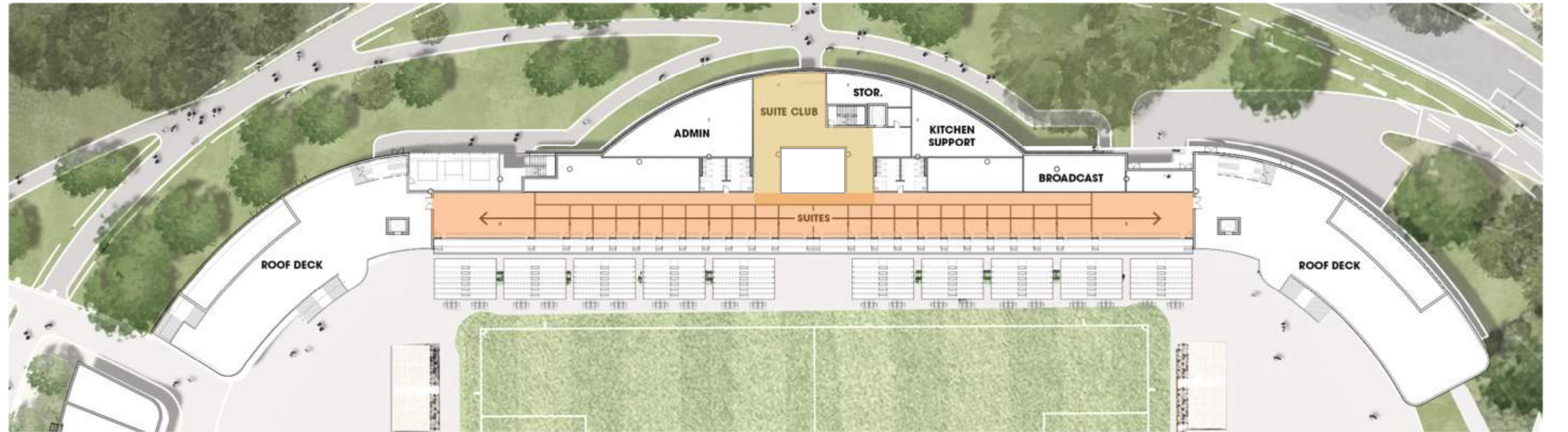
WHITE STADIUM | DESIGN UPDATES

RELATIONSHIP OF OLD TO NEW

1



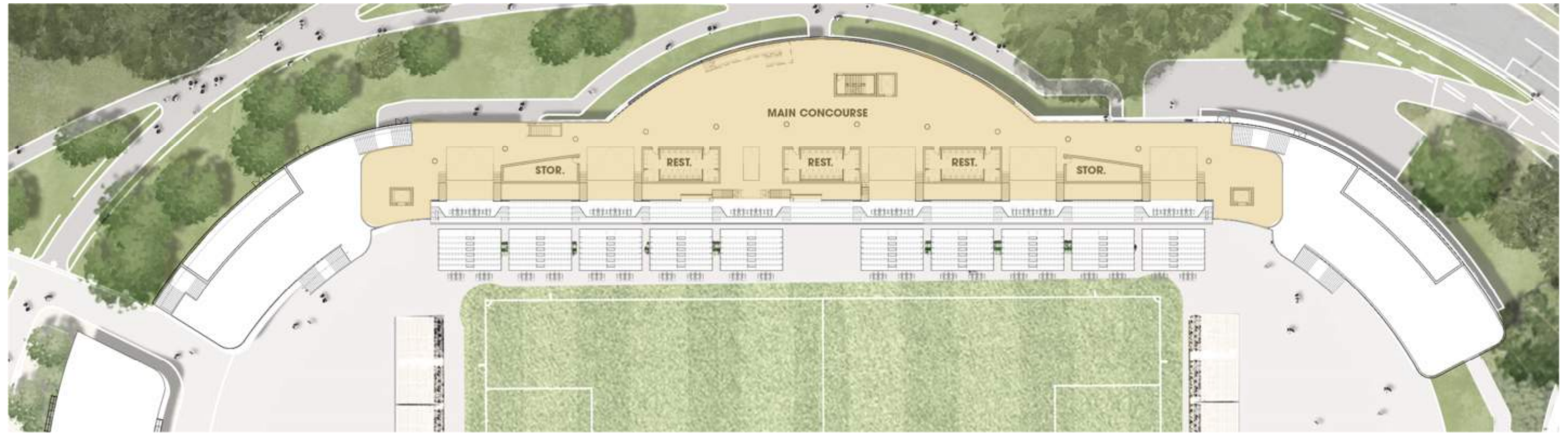
2



WHITE STADIUM | DESIGN UPDATES

RELATIONSHIP OF OLD TO NEW

3



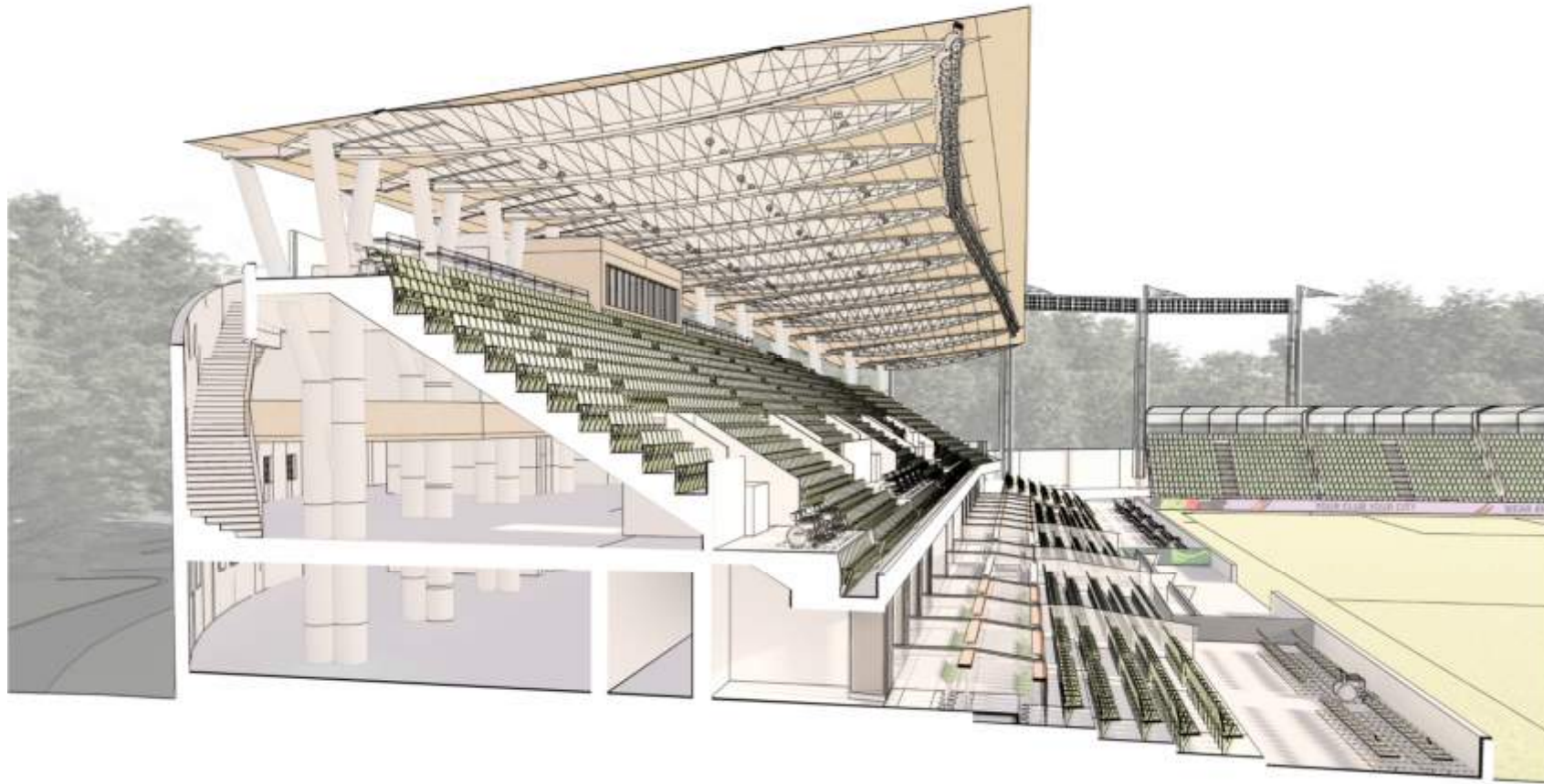
4



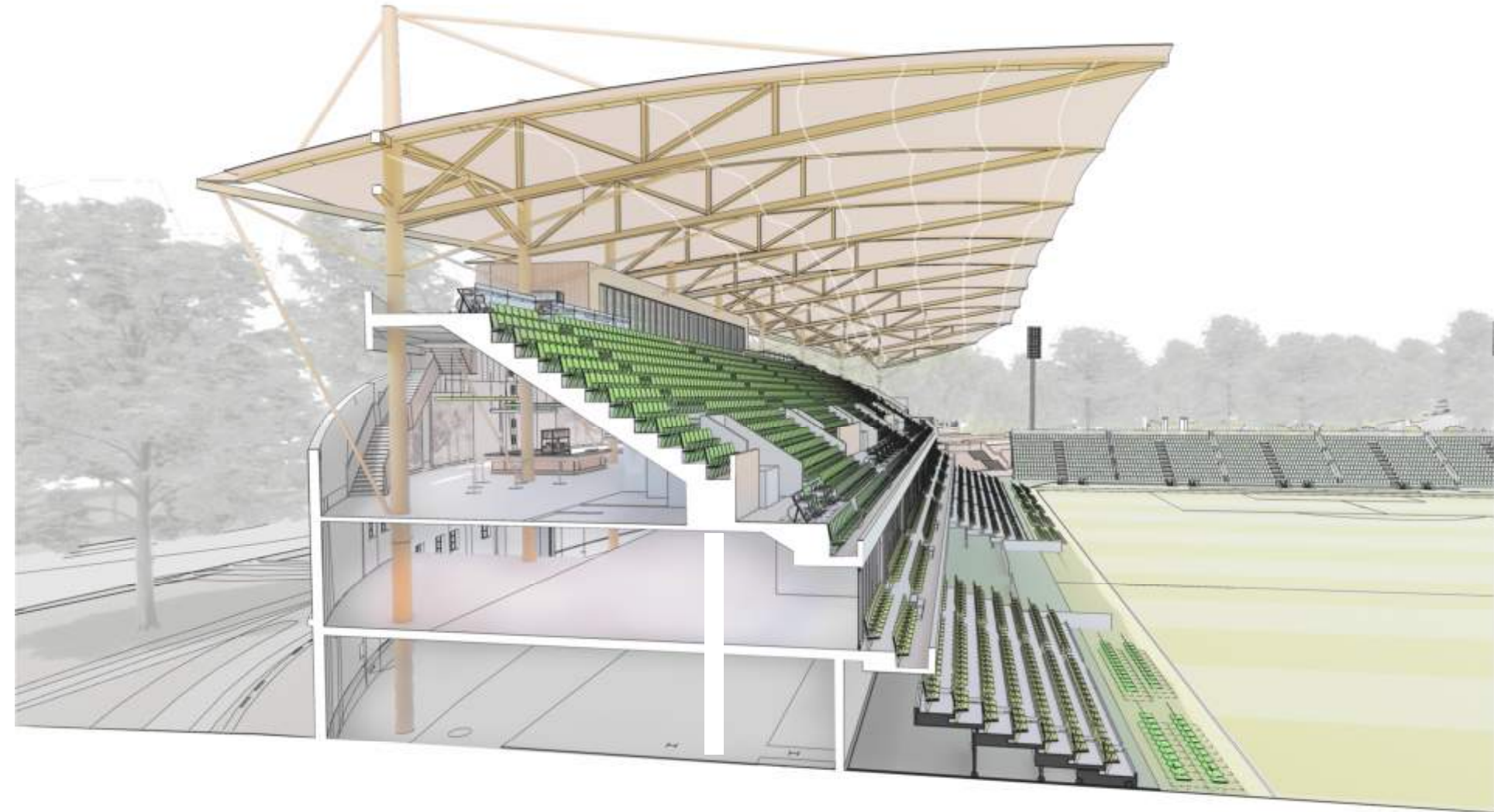
WHITE STADIUM | DESIGN UPDATES

CANOPY EVOLUTION

draft



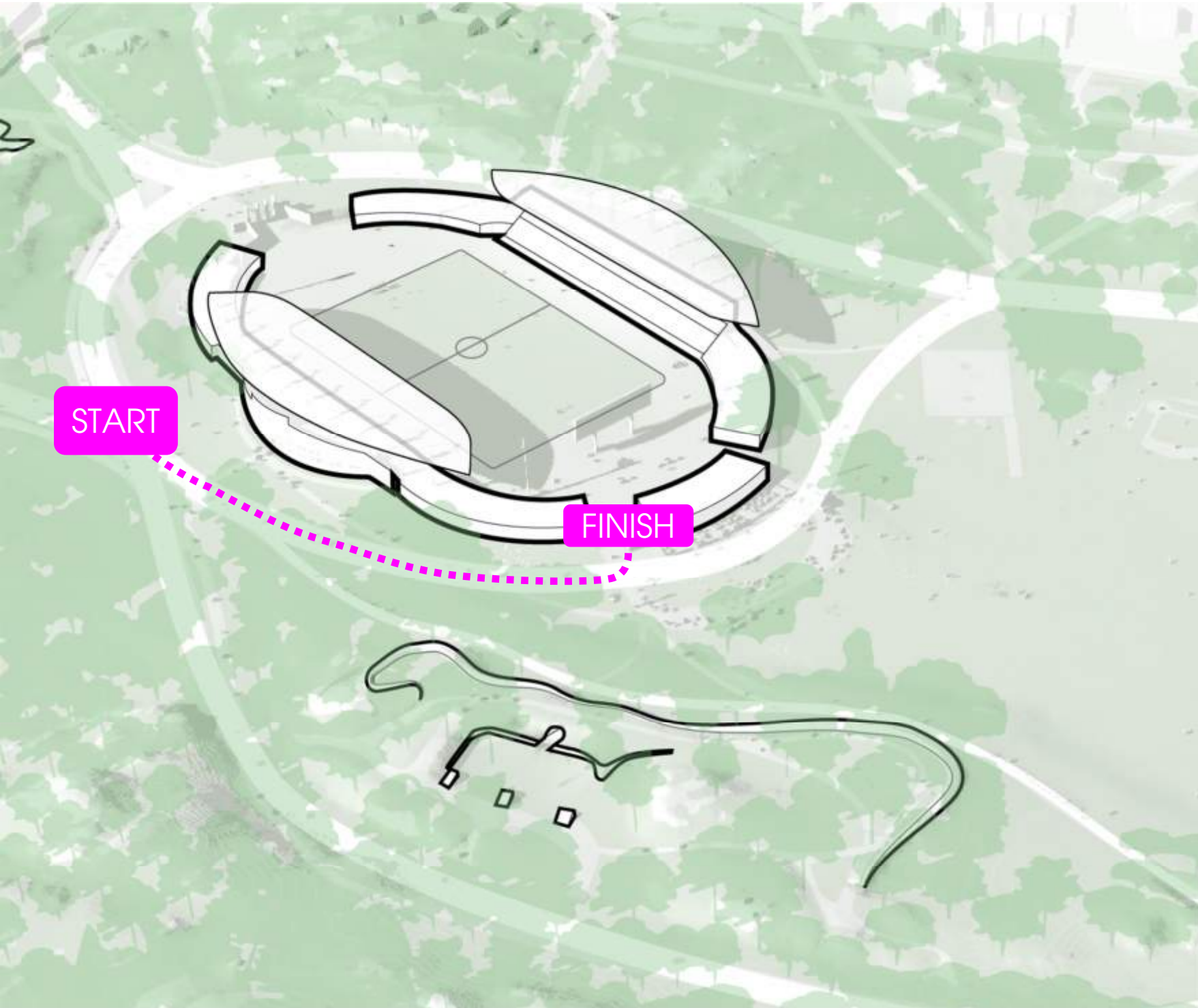
- Solid roof supported by steel trusses
- Rectilinear edge



- Fabric roof supported by steel trusses & cable rods
- Curved edges
- In progress with Canopy manufacturer

WHITE STADIUM | DESIGN UPDATES
HOW DOES THE STADIUM UNVEIL ITSELF?

draft



WHITE STADIUM | DESIGN UPDATES NORTH ENTRANCE



OPTION 1 (OFF CENTER):
 PRESERVE BOX OFFICE AND COLUMNS, REMOVE NORTH WALL AND TREES, INFORMAL TREE PLANTING OUTSIDE PAVING, PAVING BAND CELEBRATES HISTORIC THRESHOLD, PARK CHARACTER WRAPS AROUND NORTH

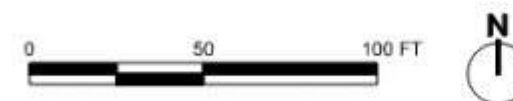
 Crowley Cottrell, LLC
 171 Milk St, Fl 2
 Boston, MA 02109
 617.338-8400 crowleycottrell.com



PLAZA/PROMENADE CHARACTER



FENCE EXAMPLE



Q & A

COMMISSIONER COMMENTS

NEXT STEPS

PUBLIC COMMENTS