



BCYF DORCHESTER COMMUNITY CENTER

Community Meeting #4

May 15, 2024



Mayor Michelle Wu

utile

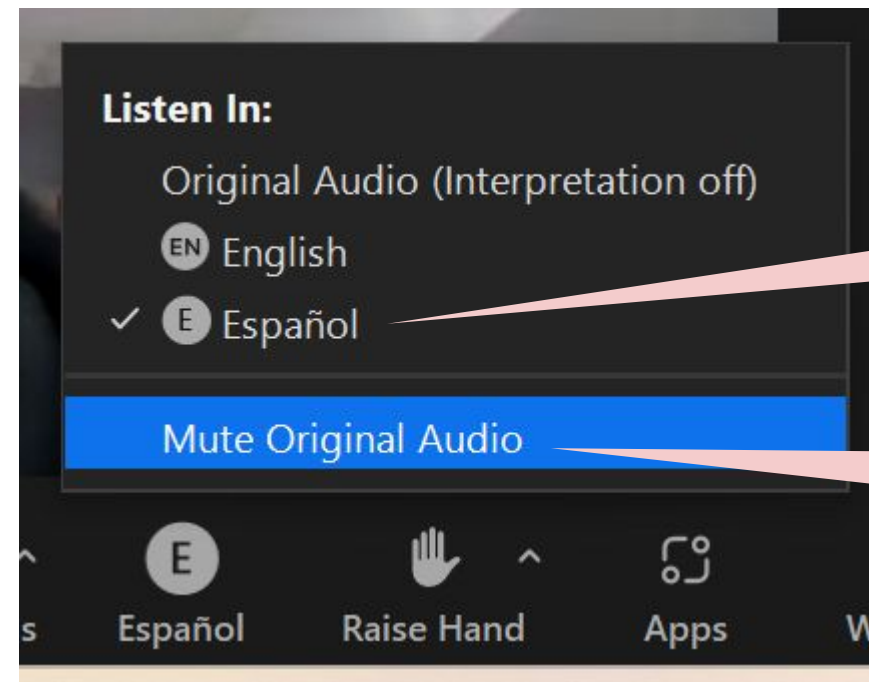


City of Boston
Public Facilities

TRANSLATIONS

Translations for this meeting are available live in the following languages:

- Cape Verdean Creole (Kriolu)
- Spanish (Español)
- Vietnamese (Tiếng Việt)
- Haitian Creole (Kreyòl ayisyen)



Select the language you would like to hear the presentation in

Select mute original audio to only hear your selected language channel

PROJECT TEAM

City of Boston Project Team

Michelle Wu, Mayor

Dion Irish, Chief of Operations

José Massó, Chief of Human Services

Public Facilities Department

Kerrie Griffin, Director

Evan Brinkman, Assistant Director of Design

Patrick Mulvey-Welsh, Assistant Director

Roberson Castor, Senior Project Manager

Michael Soucy, Senior Review Architect

Utile Architecture and Planning

Brett Bentson, *Principal*

Mimi Love, *Principal, Interior Design*

Petra Jarolimova, *Project Manager*

Andrew Ngure, *Project Designer*

Alessandro Ricciardi, *Project Designer*

Boston Centers for Youth & Families

Marta Rivera, Commissioner

Annie Qin, Chief of Staff

Edward McGuire, Director of Operations

Shawn Webb, Regional Operations Manager

Sandy Holden, Public Information Manager

Erin McCarthy, Program Manager

Nadine Johnson-Jesioneck, Aquatics Regional Ops. Manager

Aidee Pomales, Grove Hall Senior Center Center Director

Community Engagement Committee

Paulette Durrett

Mike Koza

Justis Porter

Charles Gonsalves

Chris Bishop

Randy Muhammed

Connie Forbes

Paulo De Barros

Ed Gaskin

Marcus Lewis

Anyonelis (Angie) Peguero

Khalid Mustafa

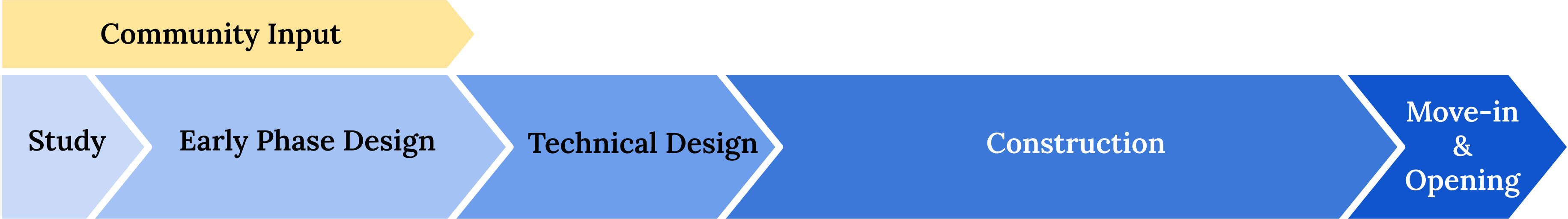
AGENDA

Community Meeting #4
May 15, 2024

1. Introductions
2. Schedule and Process
3. Community Engagement Update
4. Floor Plans
5. Landscape Concept
6. Parking Analysis
7. Next Steps
8. Q&A Discussion

This meeting will be recorded and posted on the project website:
Boston.gov/BCYF-Grove-Hall

PROJECT SCHEDULE



9 months

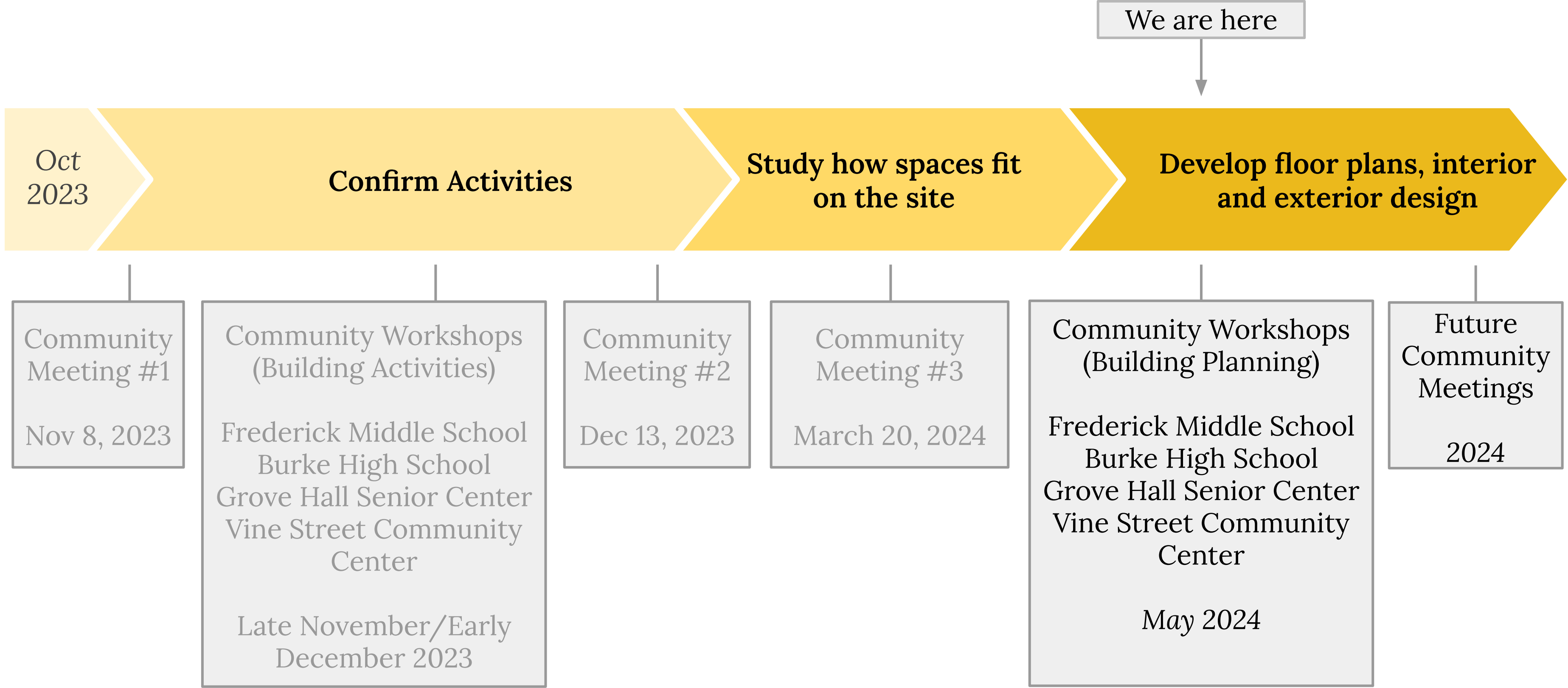
6 months

24 months

- Confirm site conditions
- Confirm activities to determine spaces
- Determine how the spaces fit and interact with the site
- Develop overall interior and exterior design
- Set the sustainability goals for the project
- Conduct Traffic Study to understand parking demands

- Detailed development of building plans
- Detailed coordination with consultants to develop building systems such as lighting, structure, hvac, etc.
- Selection of materials

COMMUNITY ENGAGEMENT



COMMUNITY ENGAGEMENT UPDATE



COMMUNITY ENGAGEMENT

Public Meeting #1

Nov 8, 2023

Frederick Pilot Middle School Workshop

Nov 30, 2023

Grove Hall Senior Center Workshop

Dec 6, 2023

Burke High School Workshop

Dec 7, 2023

Vine Street Community Center Pop-up

Dec 9, 2023

Public Meeting #2

Dec 13, 2023

CEC Meeting #1

Dec 20, 2023

CEC Meeting #2

March 13, 2023

Public Meeting #3

March 20, 2024

Grove Hall Senior Center Workshop

May 6, 2024

CEC Meeting #4

May 8, 2024

Public Meeting #4 - Tonight!

May 15, 2024

Vine Street Community Center Pop-up

Upcoming! May 18, 2024 @11-12:30pm

Frederick Pilot Middle School Workshop

TBD - Upcoming

Burke High School Workshop

TBD - Upcoming



COMMUNITY WORKSHOP GOALS & STRUCTURE

Goal:

Understand and document the look and feel that community members would prefer for the interiors of the new Community Center.

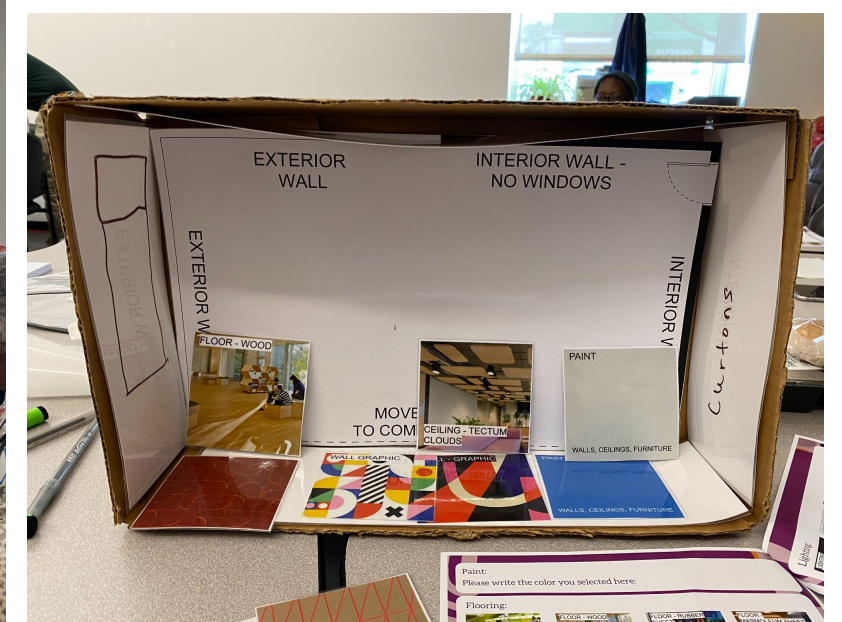
Activities:

Using a mood board to select desired look and feel for the interiors and transparency from inside to outside.

Build your own space inside a shoe box by placing activity areas and selecting interior finishes

Participants:

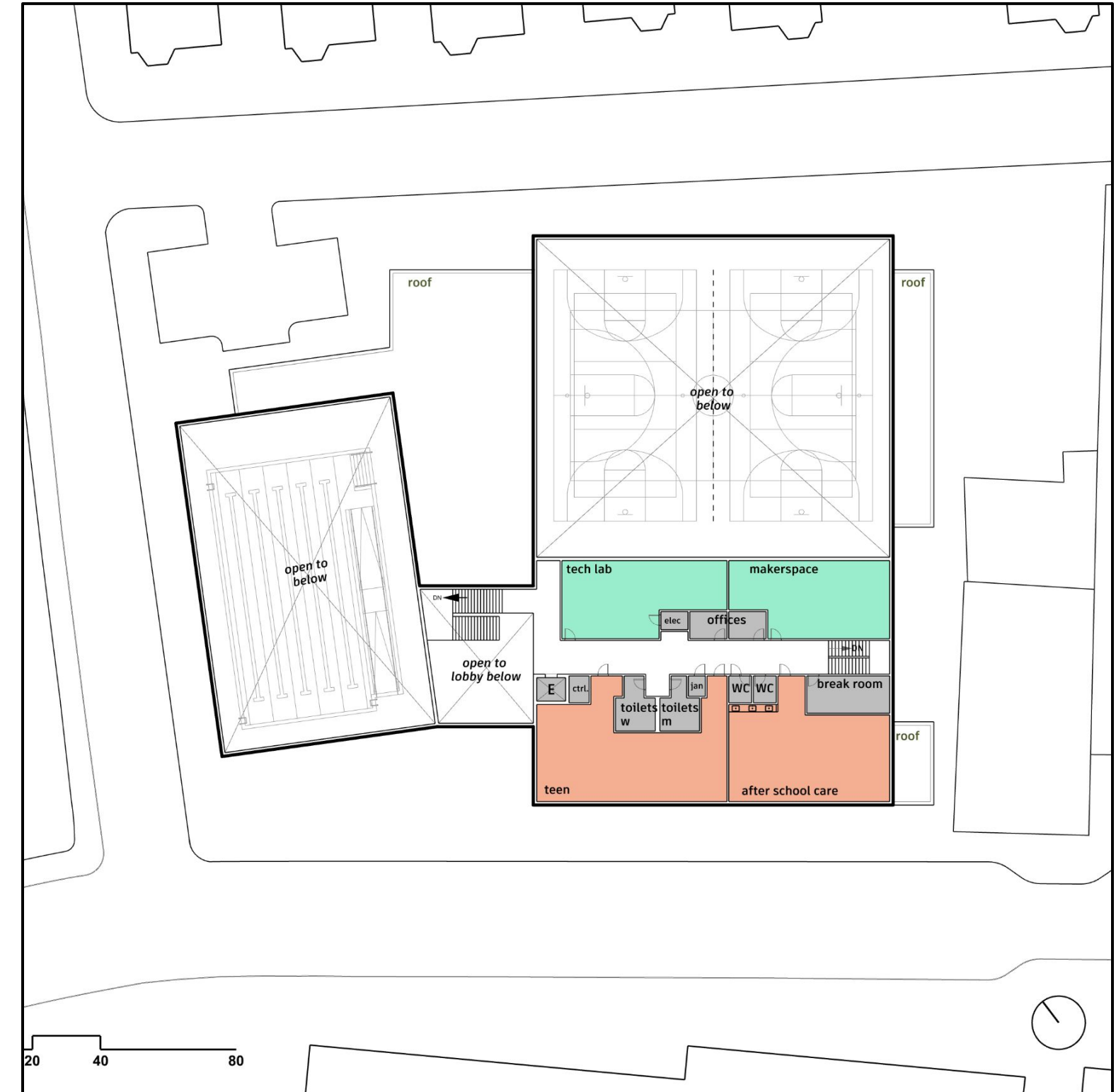
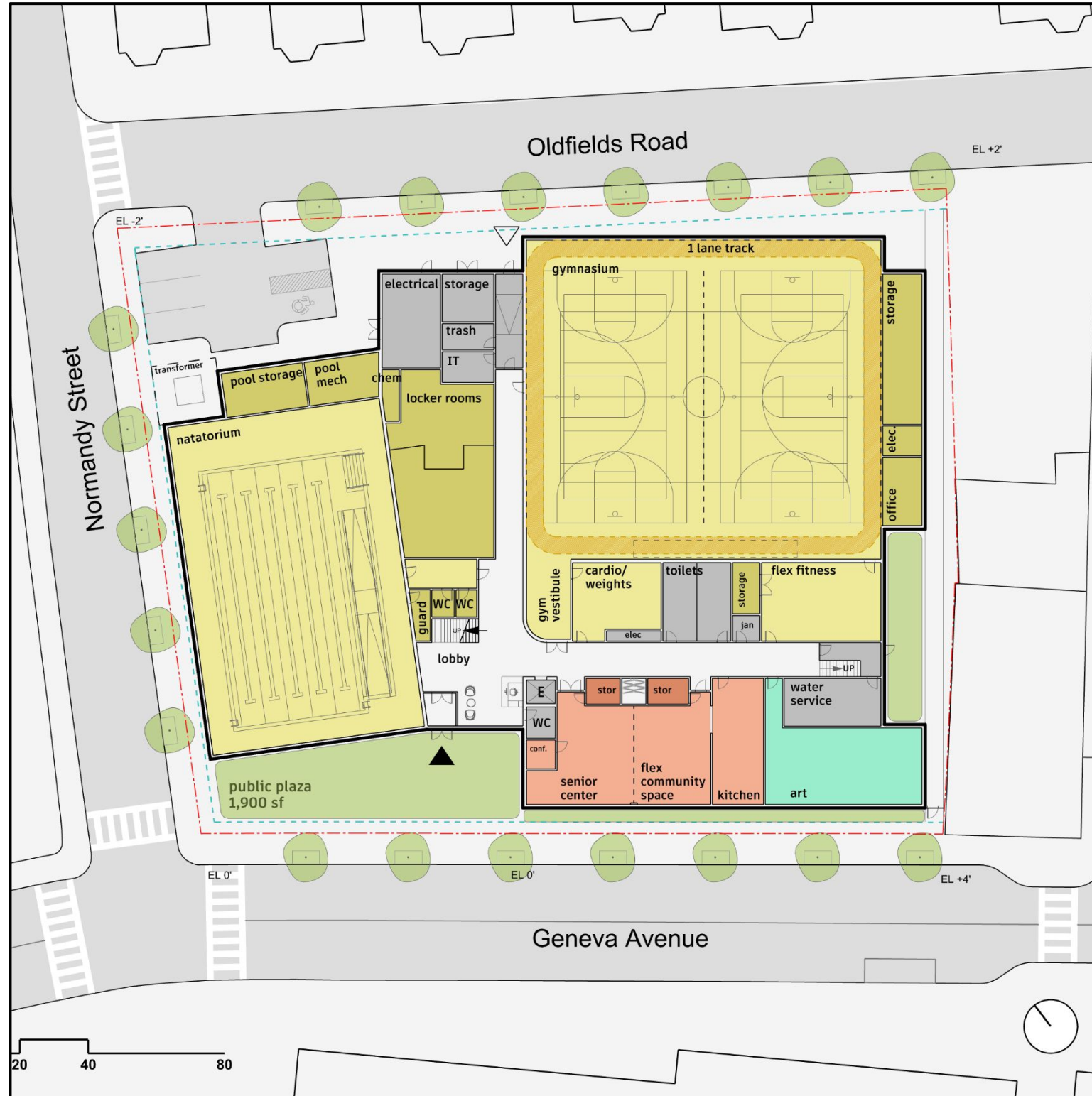
Grove Hall Senior Center - 30 participants
Vine Street Community Center - Upcoming May 18th!
Frederick Pilot Middle School - Upcoming
Burke High School - Upcoming



FLOOR PLANS

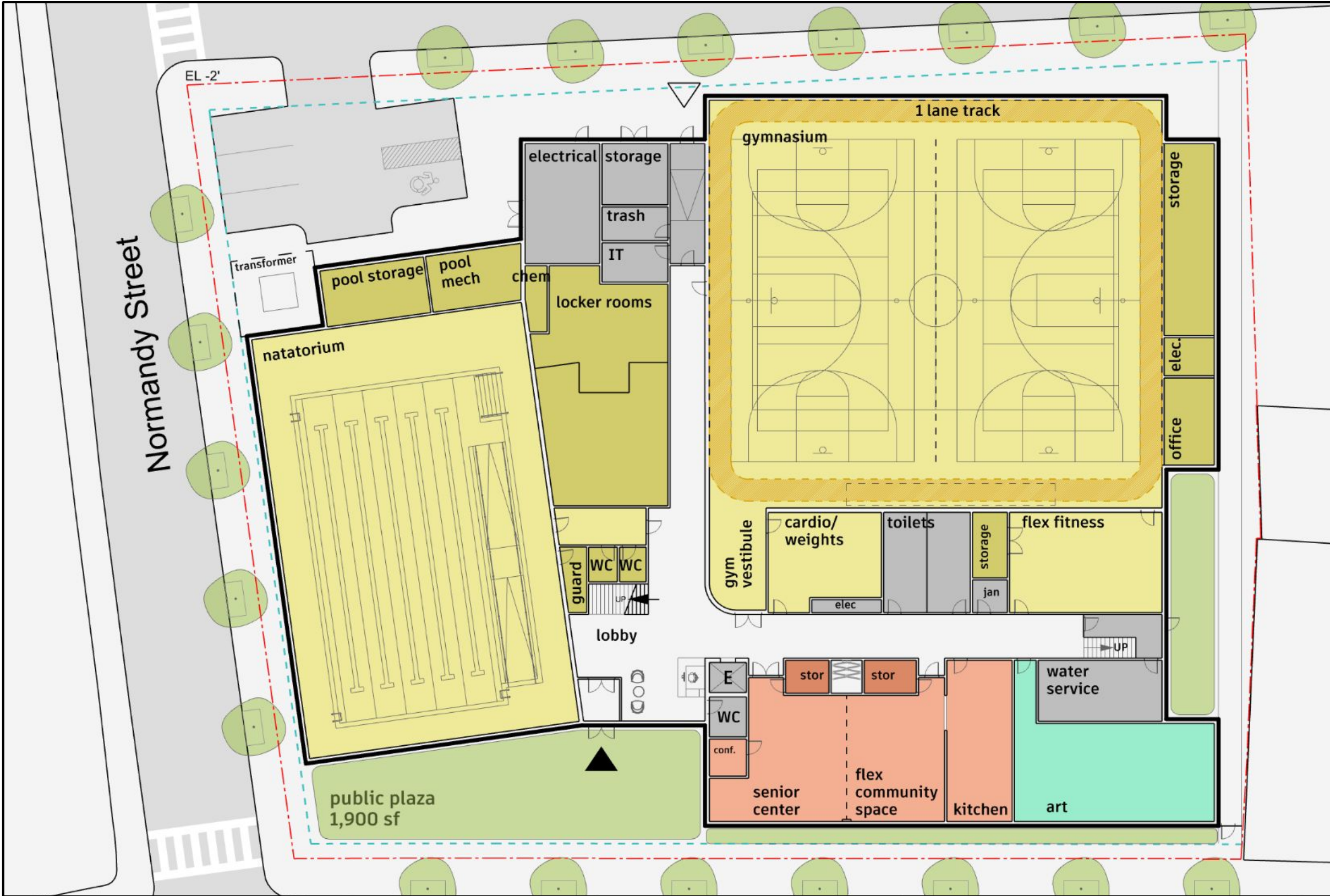


FLOOR PLANS



FLOOR PLANS

GROUND FLOOR PLAN

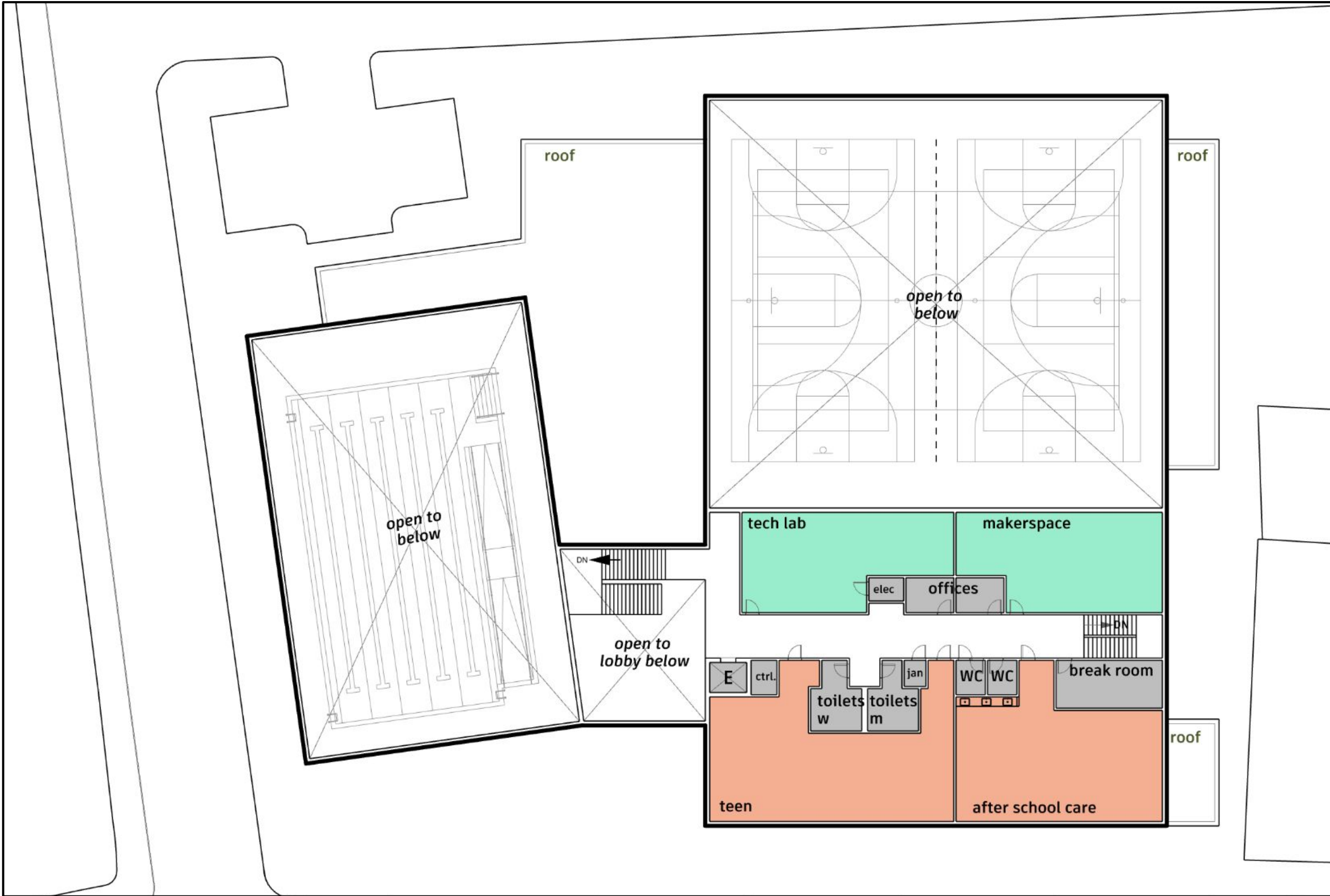


LEGEND

- ▲ Main Entrance
- △ Parking Entrance
- Fitness Program
- Education Program
- Community Program
- Green Space

FLOOR PLANS

SECOND FLOOR PLAN



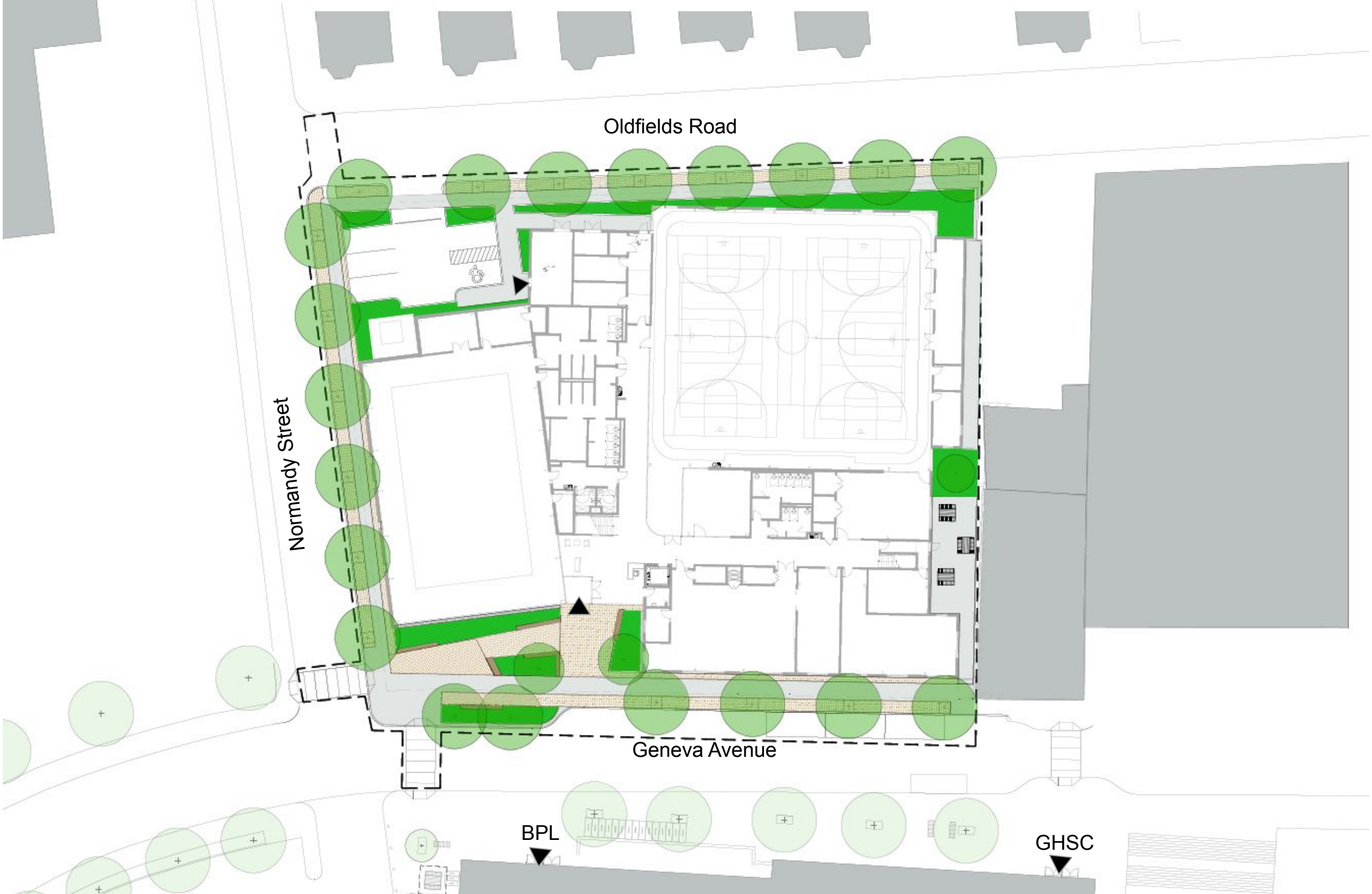
LEGEND

- ▲ Main Entrance
- △ Parking Entrance
- Fitness Program
- Education Program
- Community Program
- Green Space

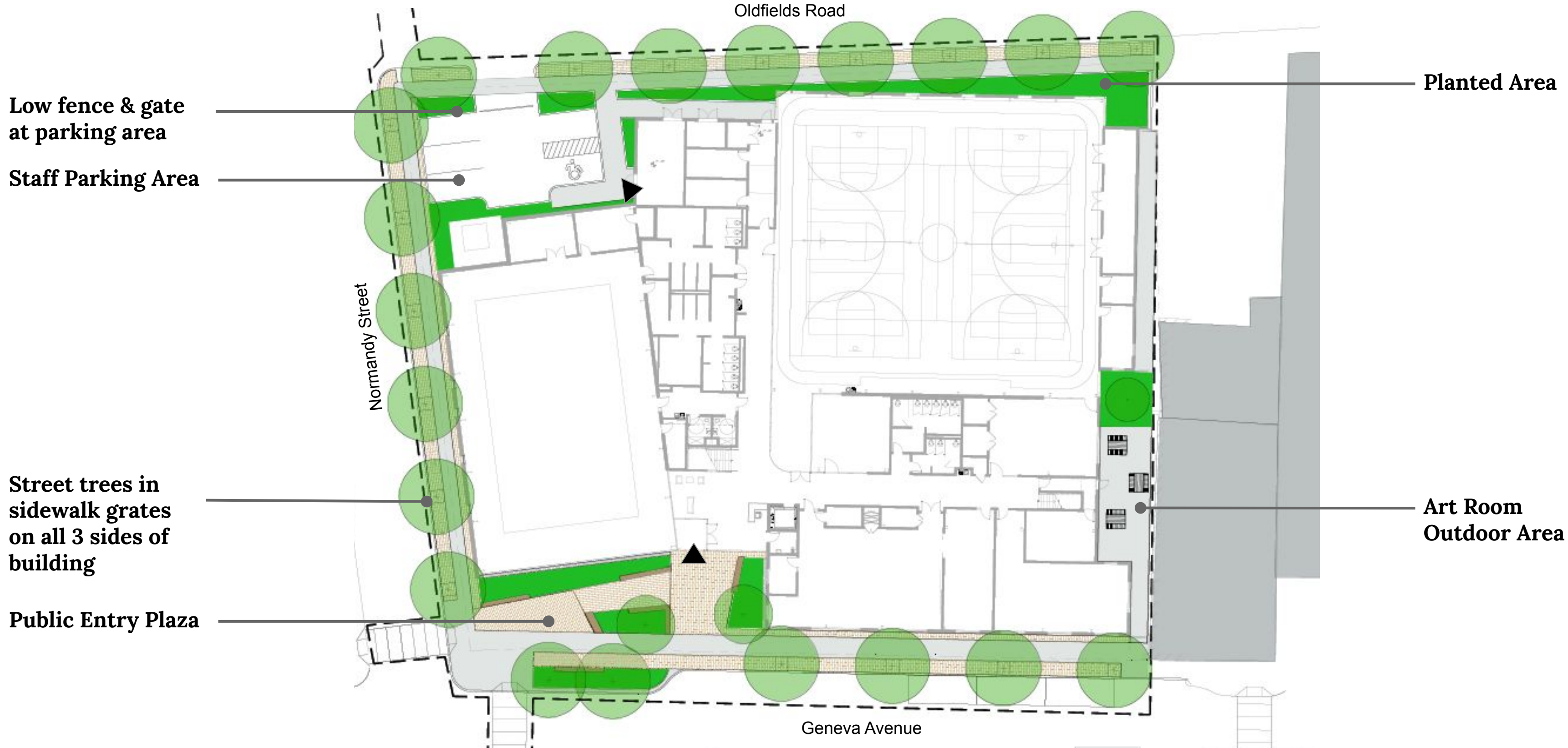
LANDSCAPE CONCEPT



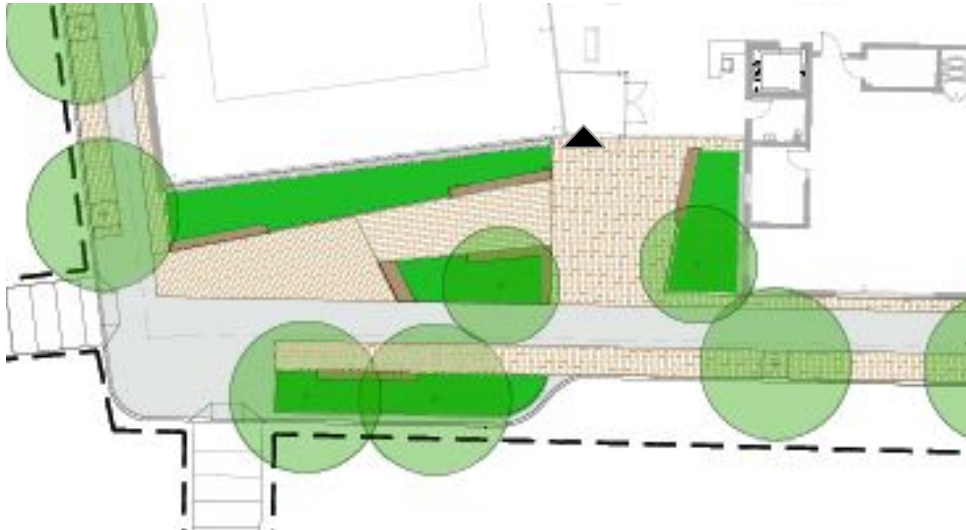
LANDSCAPE PLAN IN CONTEXT



LANDSCAPE PLAN

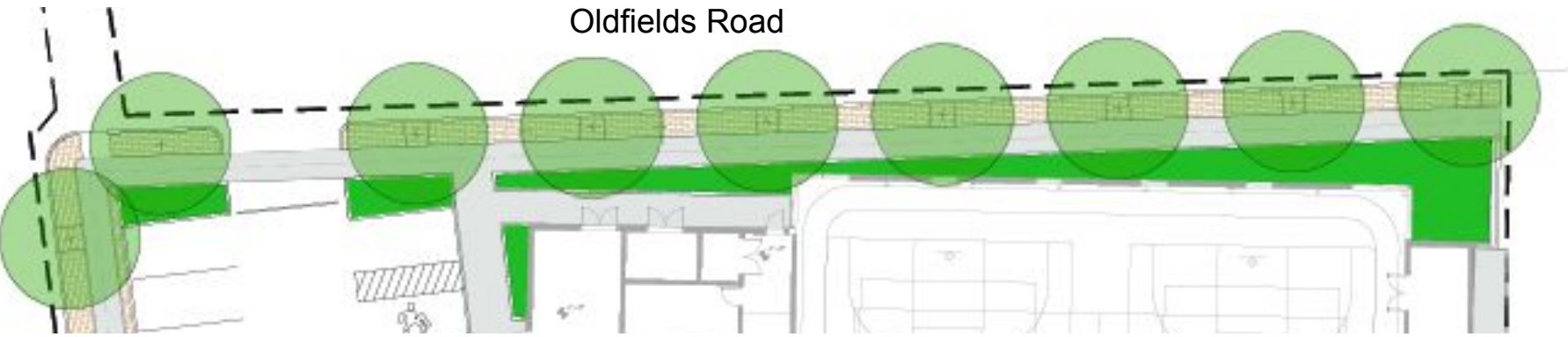


ENTRY PLAZA

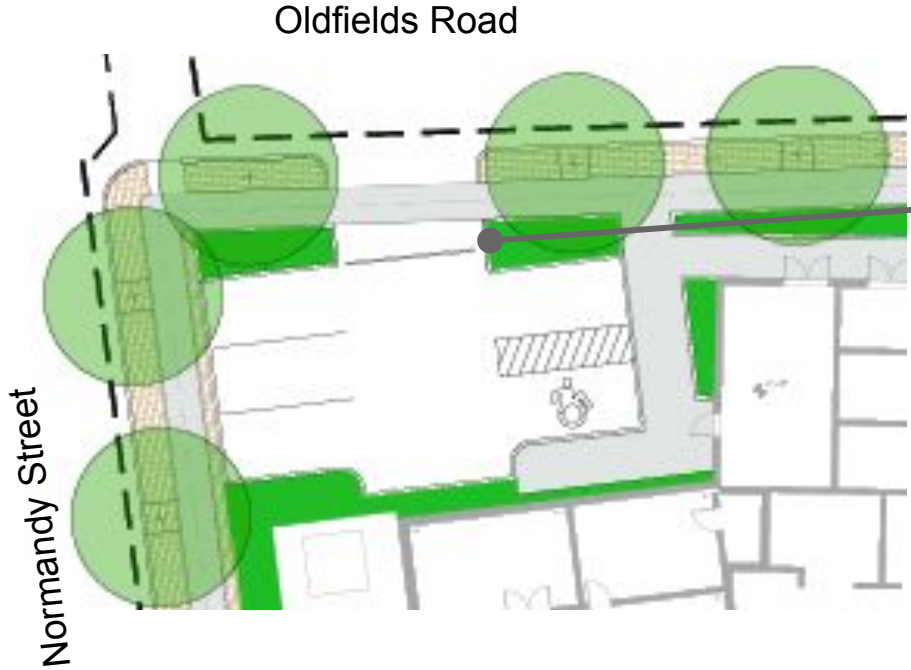


Geneva Avenue

PLANTING ALONG OLDFIELDS ROAD

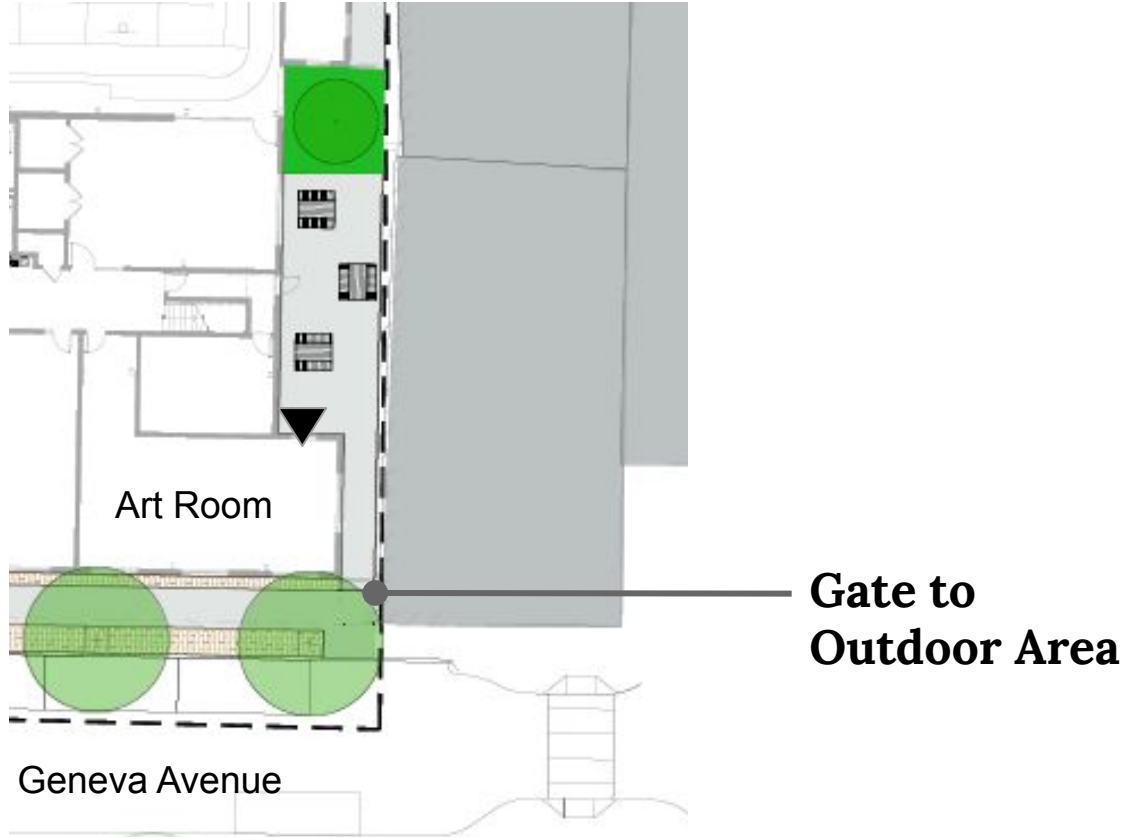


PARKING AREA



Low fence & gate at parking area

ART ROOM OUTDOOR AREA



PARKING ANALYSIS

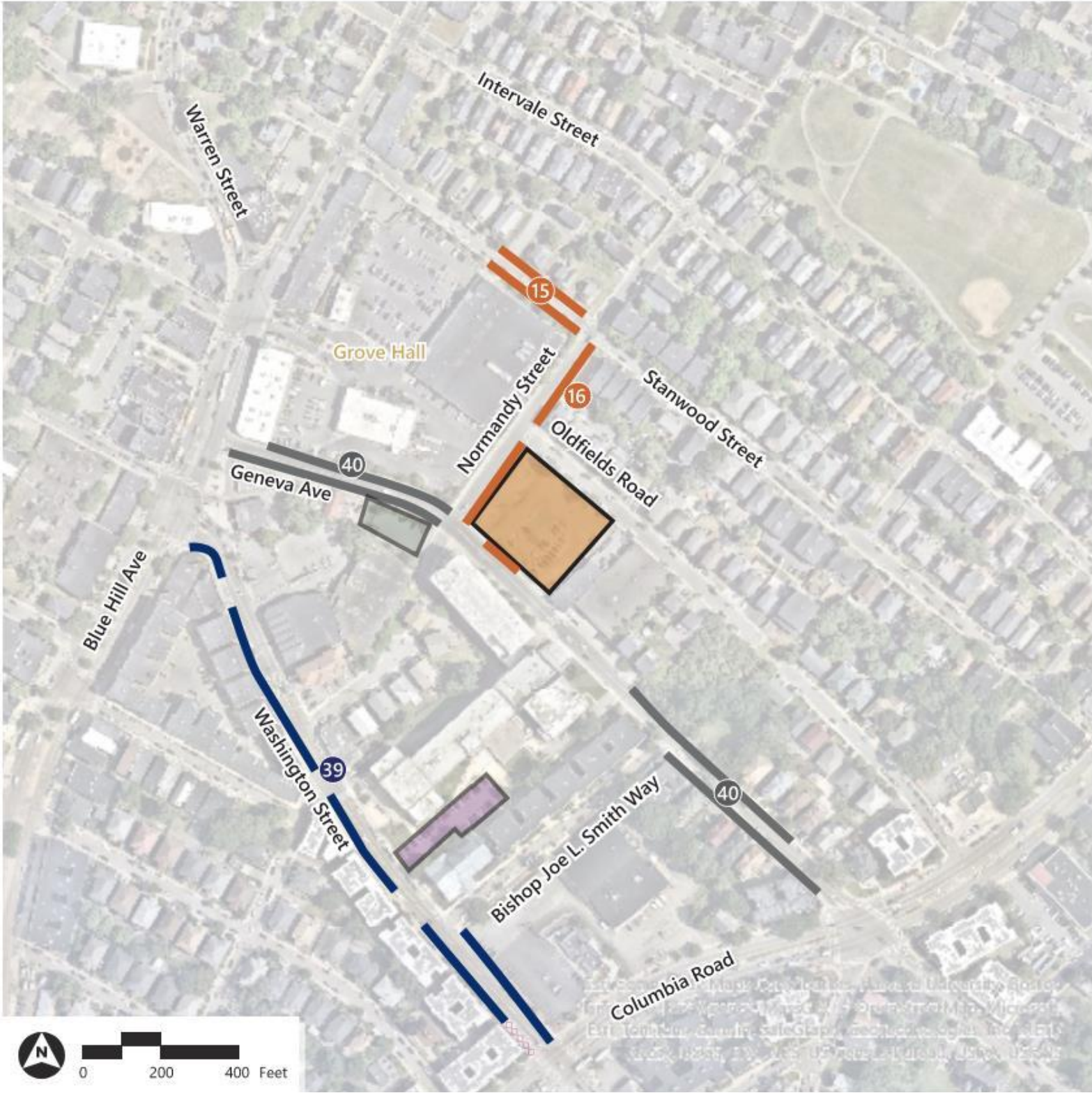
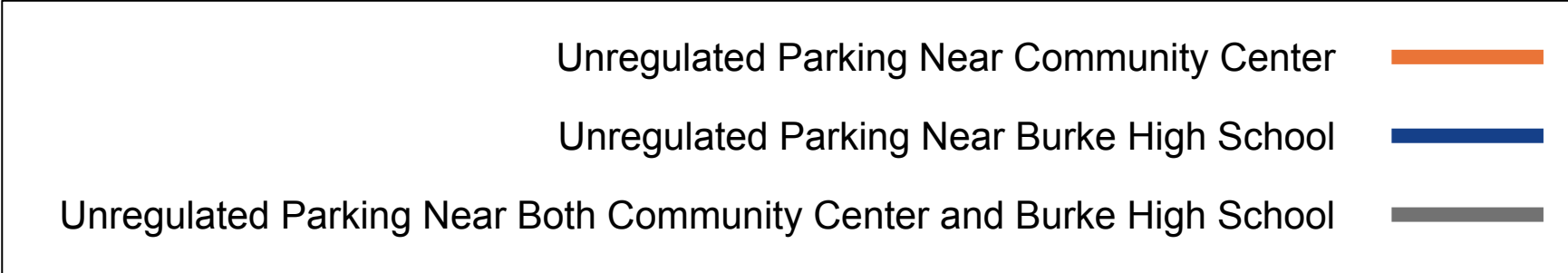


PARKING AVAILABILITY NEAR THE PROJECT SITE

Our traffic consultant (VHB) conducted a parking study of the area near the project site in early April during and after the school day.

Based on direct observation of the area, **150** unregulated parking spaces are available close to the Project Site excluding Oldfields Road and Bishop Smith Way

**Unregulated parking is parking that has no time restrictions*



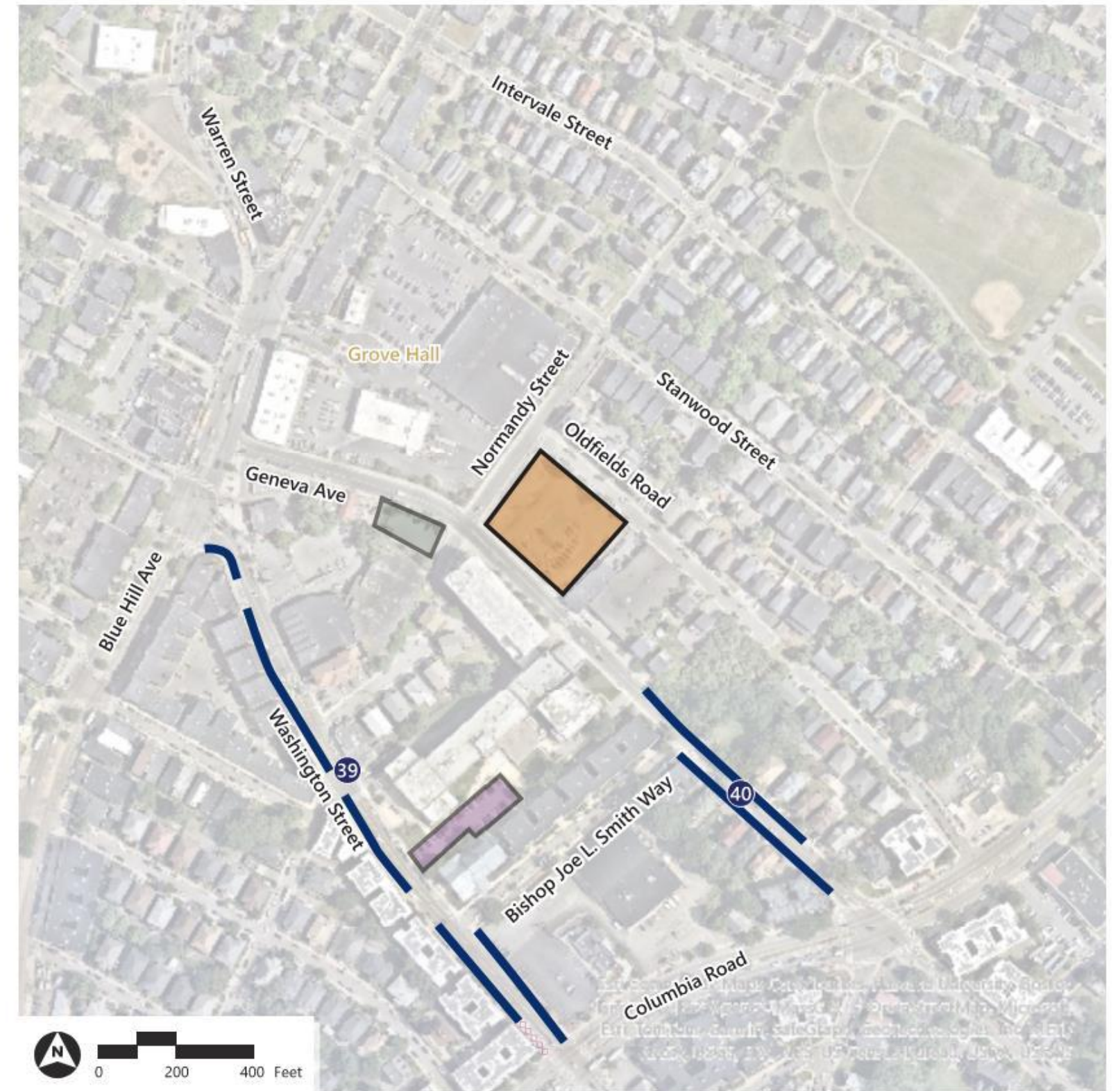
PARKING AVAILABILITY FOR BURKE HIGH SCHOOL

Approximately 45 vehicles were observed in the surface lot on the Project Site during peak use.

The number of vehicles dropped to 5 after school hours indicating the primary use of the surface lot is by Burke Staff.

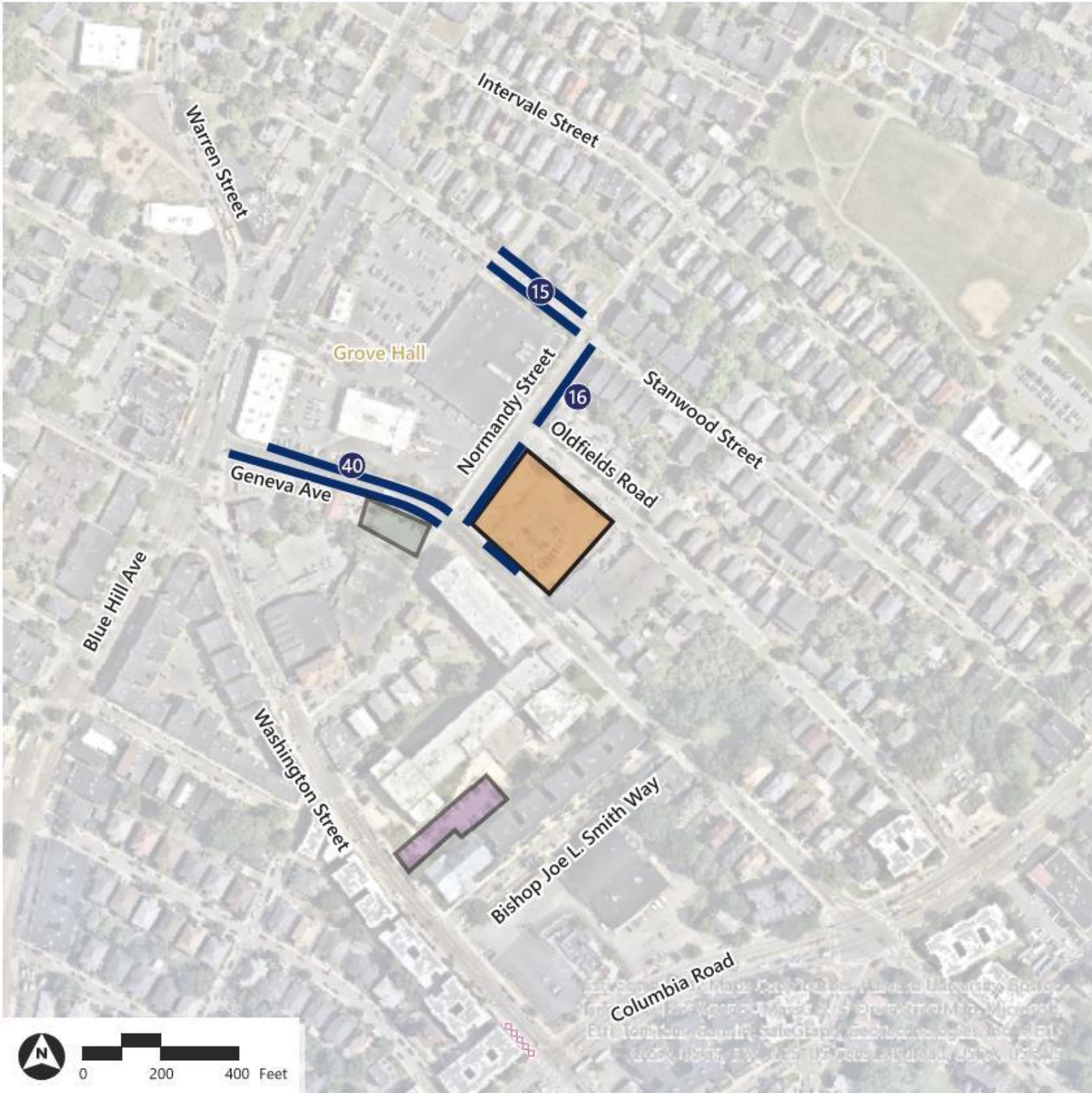
Observations indicate that there are enough available (vacant) on-street spaces during the school day to accommodate vehicles displaced from the surface lot.

**There are 79 available unregulated parking spaces within a 2.5 minute walk of Burke High School of which 60 were observed to be vacant during the school day (excludes Bishop Smith Way).*



PARKING NEAR THE NEW COMMUNITY CENTER

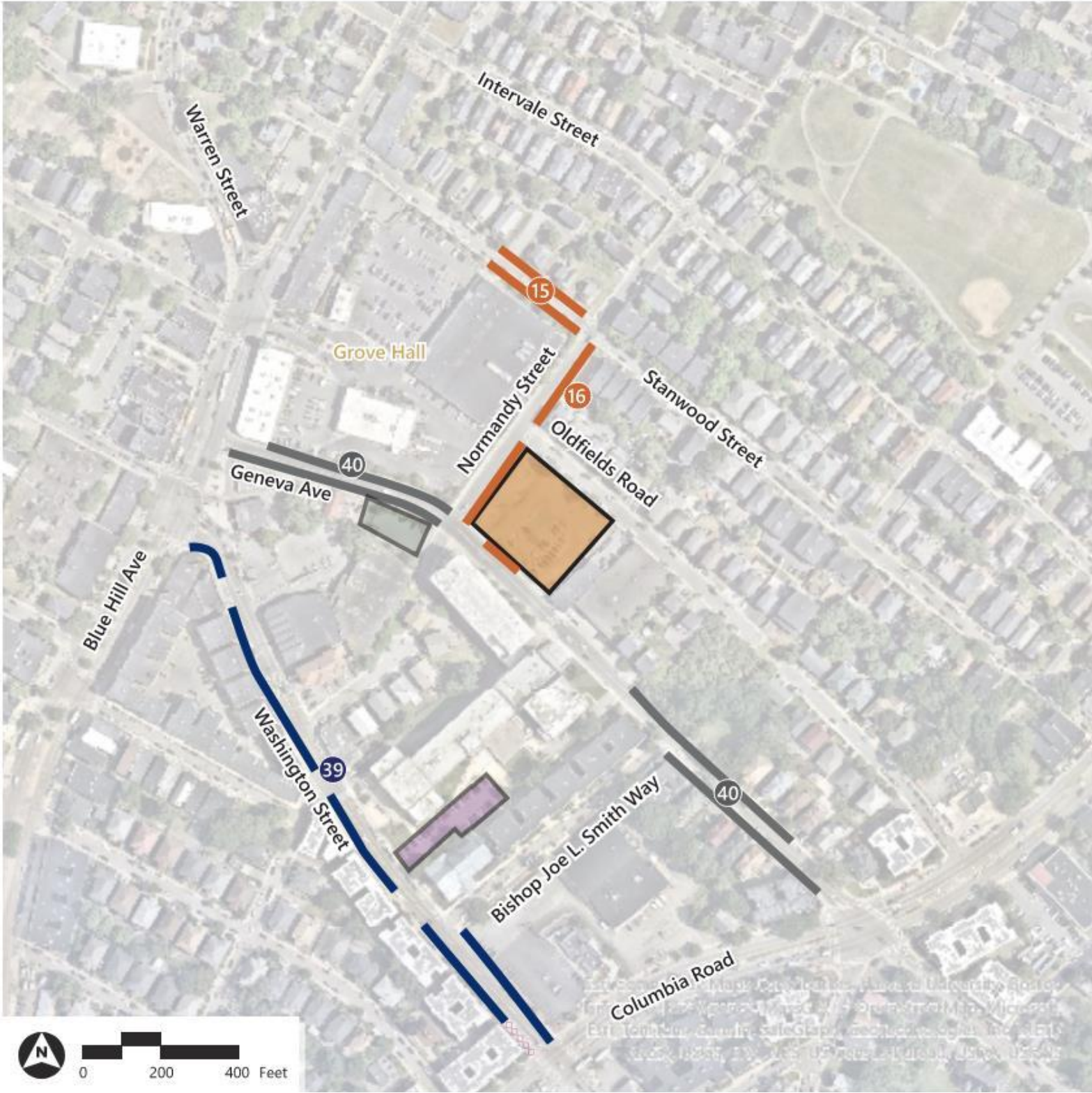
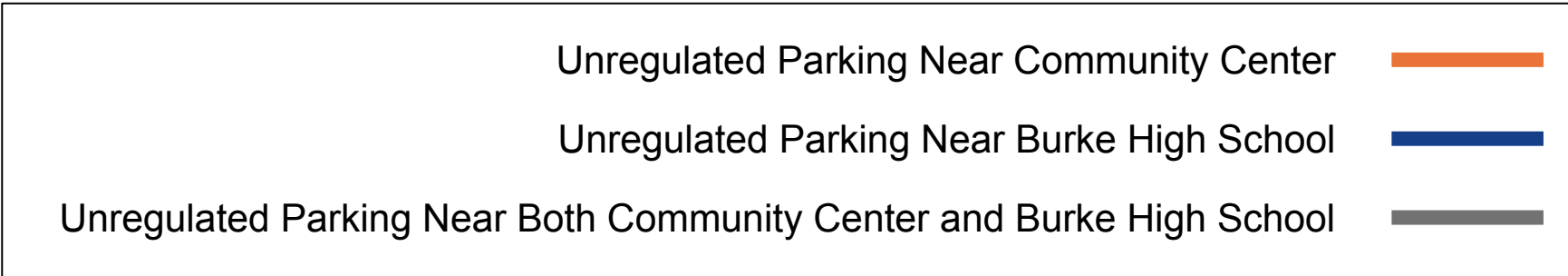
There are 71 unregulated parking spaces within a 2.5 minute walk of the Community Center site of which 50 were observed to be vacant during the school day.



PARKING NEAR THE NEW COMMUNITY CENTER

Based on data from Curtis Hall, a comparable BCYF Community Center, peak usage of the center is expected weekday mornings.

Based on the parking study there is enough unregulated parking that is available during the day to satisfy the parking demand for both the Burke High School staff and the new Community Center.

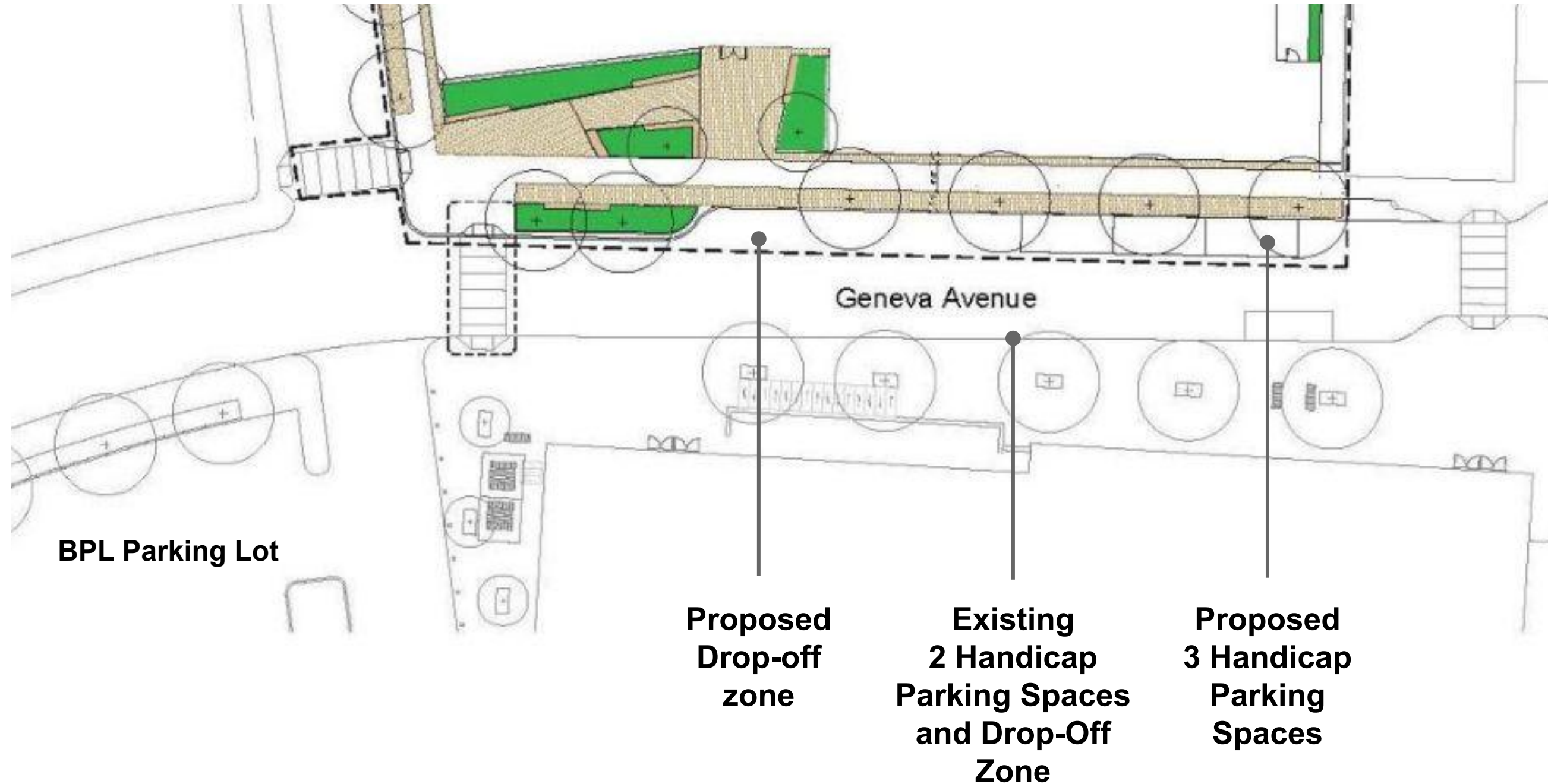


PROPOSED ACCESSIBLE PARKING ON THE PROJECT SITE

3 new accessible parking spaces are proposed as part of the new Community Center close to the front door.

A bus and drop off zone is proposed in front of the entry plaza on Geneva.

Additional 2 handicap accessible spaces will continue to be available across the street in front of Grove Hall BPL and the current Grove Hall Senior Center.

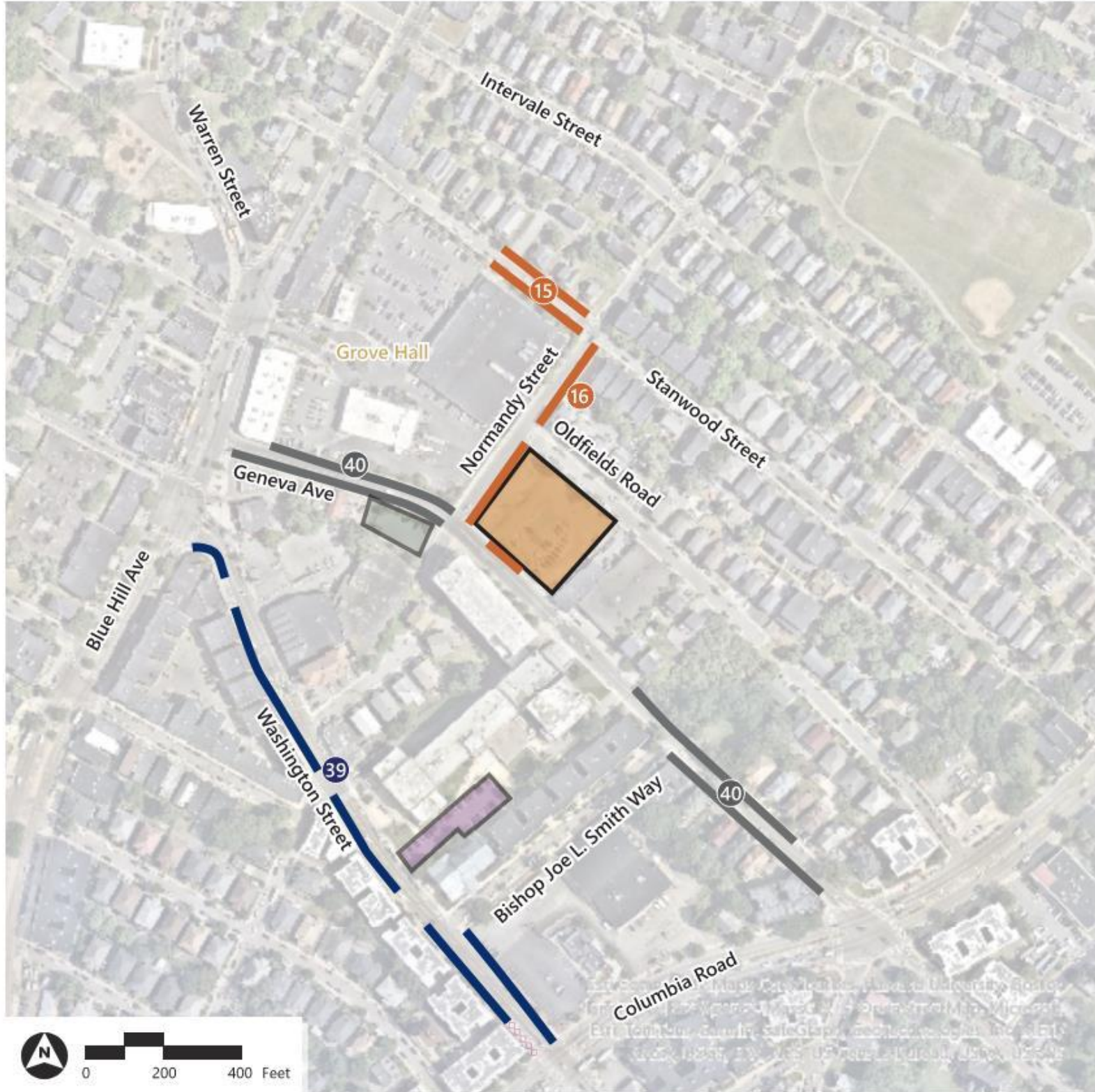
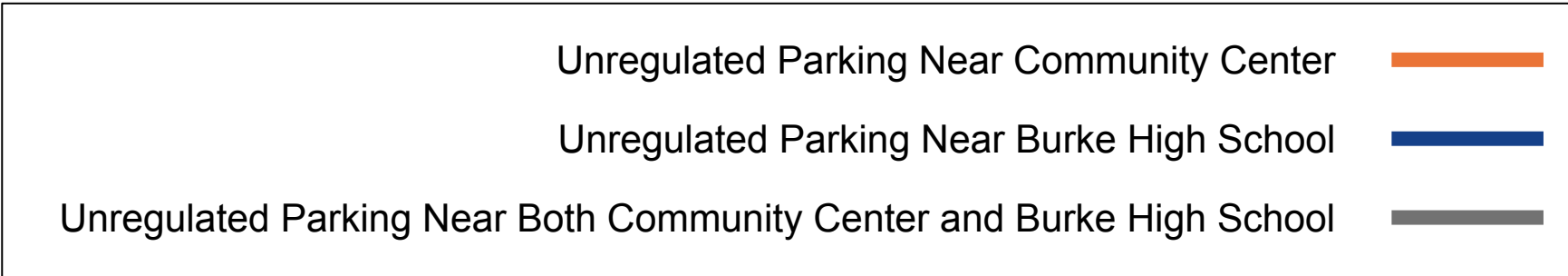


PARKING FEEDBACK

Should we consider proposing time restricted parking (2-3 hour limit or no parking before 9am) in the project vicinity to make sure those spaces are not taken by Burke High School staff?

Is the bus and drop-off zone in front of the Community Center useful for patrons?

Are three restricted handicap-accessible parking spaces in front of the Community Center useful?

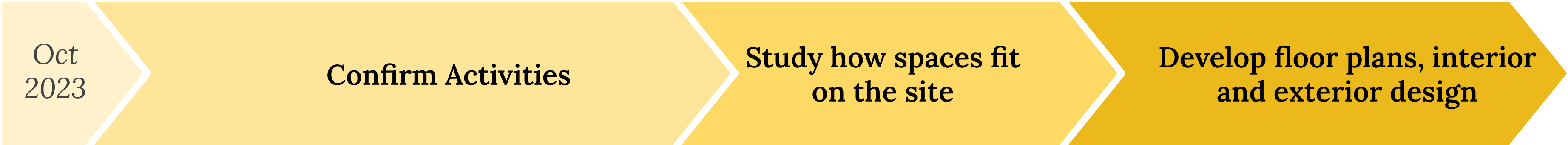


NEXT STEPS



COMMUNITY ENGAGEMENT

We are here



Community Meeting #1
Nov 8, 2023

Community Workshops (Building Activities)
Frederick Middle School
Burke High School
Grove Hall Senior Center
Vine Street Community Center

Late November/Early December 2023

Community Meeting #2
Dec 13, 2023

Community Meeting #3
March 20, 2024

Community Workshops (Building Planning)
Frederick Middle School
Burke High School
Grove Hall Senior Center
Vine Street Community Center

May 2024

Future Community Meetings
2024

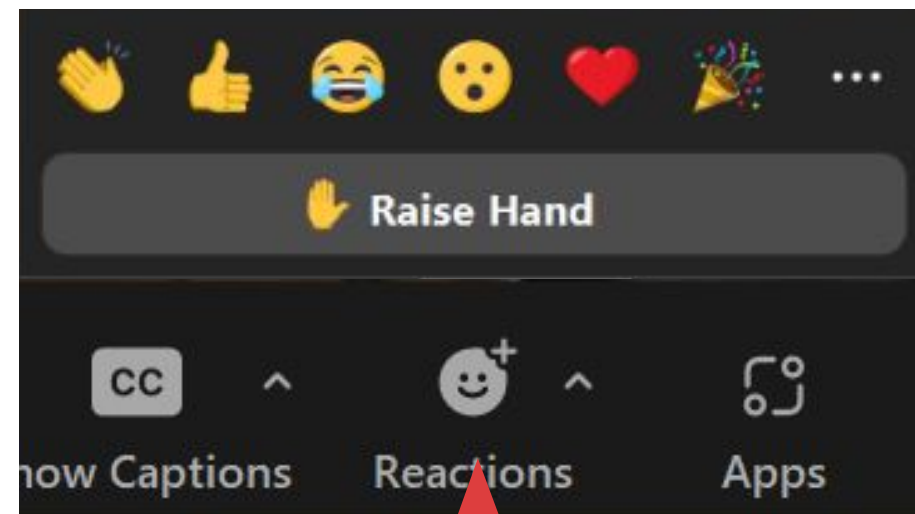
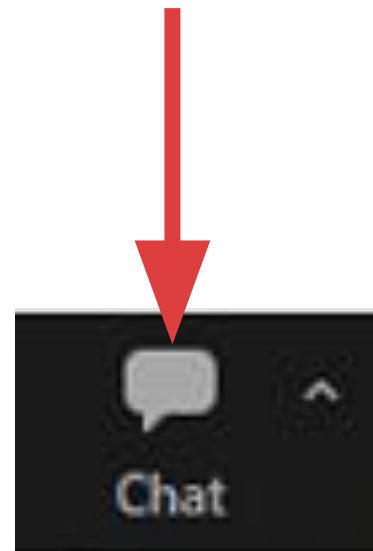
QUESTIONS & COMMENTS?

WE WANT YOUR FEEDBACK!



QUESTIONS & ANSWERS

For written comments or questions:
Use the chat dialog box



To ask a question:
Raise hand and wait to be called on

*This meeting will be recorded and posted on the project website:
Boston.gov/BCYF-Grove-Hall*

THANK YOU!

