

BOSTON MEDICAL CENTER, 850 HARRISON AVE.

**MENINO/YAWKEY LOBBY ADDITION DESIGN REVIEW
MINOR DESIGN REVISIONS TO ORIGINAL APPROVAL FOR APPLICATION
#23.0144 SE APPROVED ON 10/12/22**

SOUTH END LANDMARKS DISTRICT COMMISSION, MARCH 11, 2024

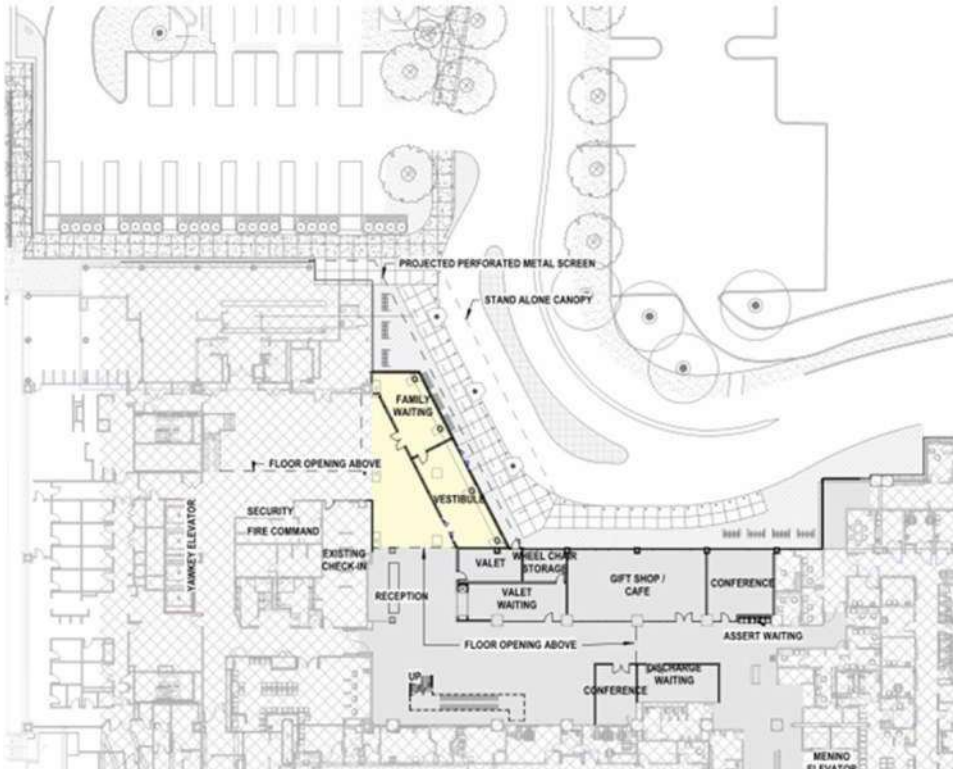


TSOI KOBUS DESIGN

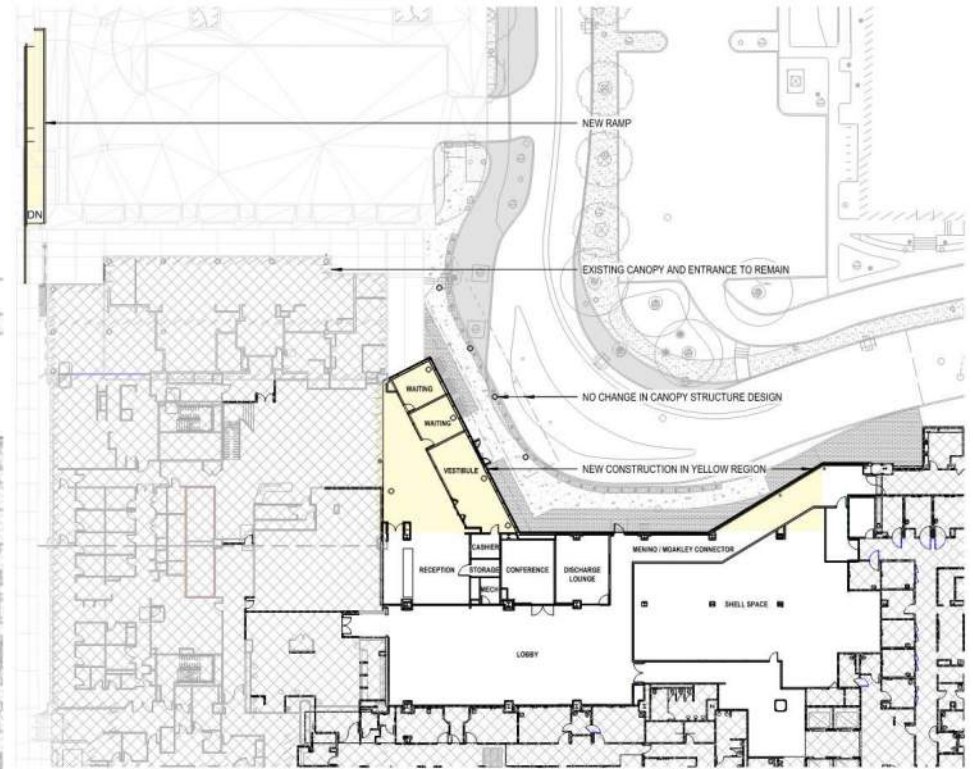
DATE SUBMITTED: MARCH 11, 2024

MENINO/YAWKEY LOBBY ADDITION DESIGN REVIEW: MINOR REVISIONS SOUTH END LANDMARKS DISTRICT COMMISSION, MARCH 11, 2024

YAWKEY LOBBY ADDITION – LEVEL 1 FLOOR PREVIOUSLY APPROVED 10/12/2022 AND PROPOSED PLANS



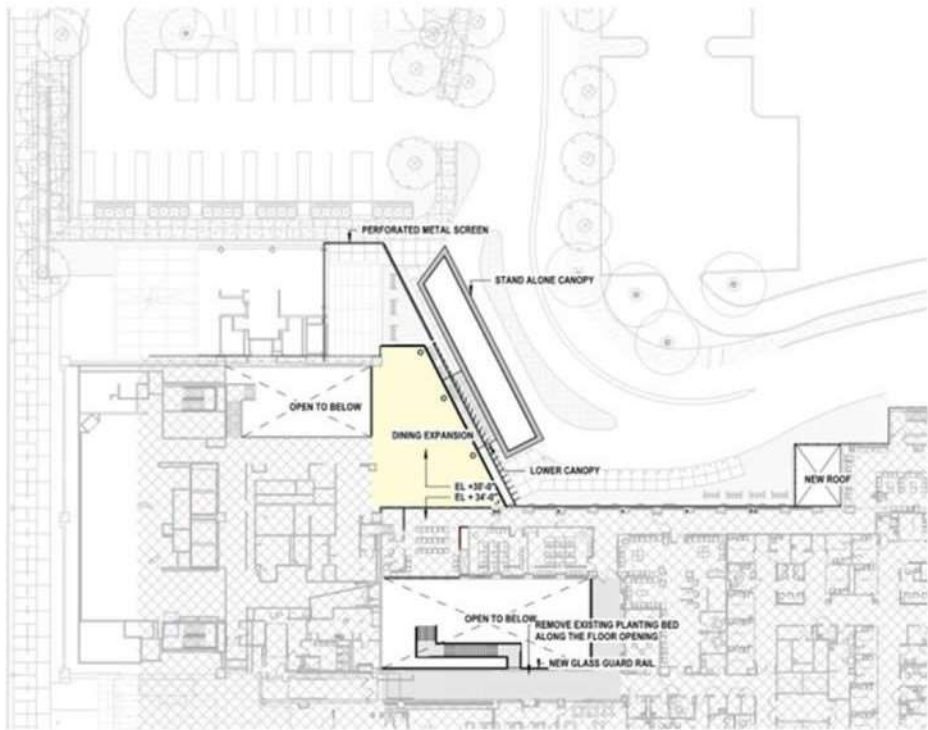
LEVEL 1 PREVIOUSLY APPROVED 10/12/2022 FLOOR PLAN



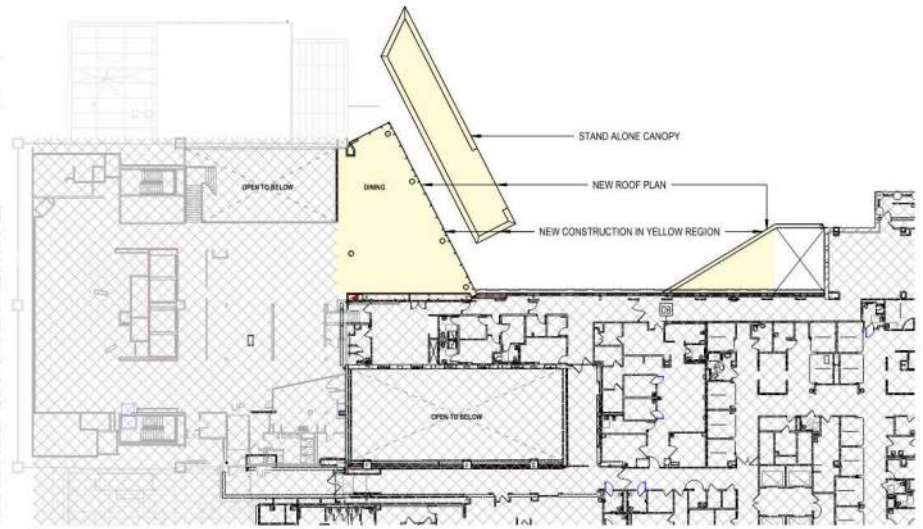
LEVEL 1 PROPOSED FLOOR PLAN

MENINO/YAWKEY LOBBY ADDITION DESIGN REVIEW: MINOR REVISIONS SOUTH END LANDMARKS DISTRICT COMMISSION, MARCH 11, 2024

YAWKEY LOBBY ADDITION – LEVEL 2 FLOOR PREVIOUSLY APPROVED 9/9/2022 AND PROPOSED PLANS



LEVEL 2 PREVIOUSLY APPROVED 10/12/2022 FLOOR PLAN



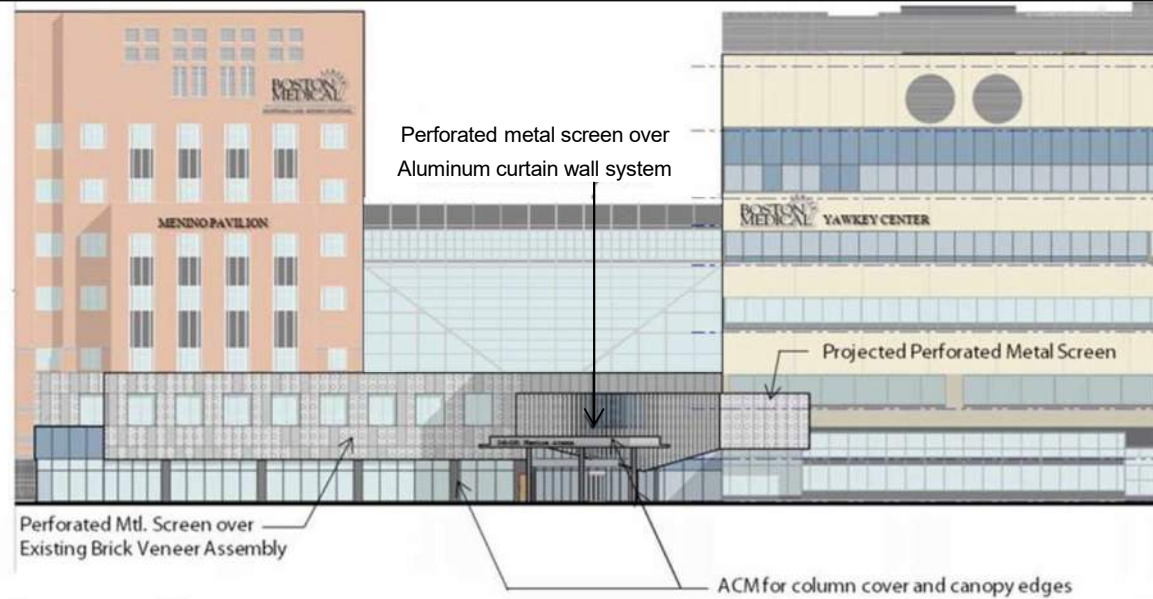
LEVEL 2 PROPOSED FLOOR PLAN

MENINO/YAWKEY LOBBY ADDITION DESIGN REVIEW: MINOR REVISIONS.

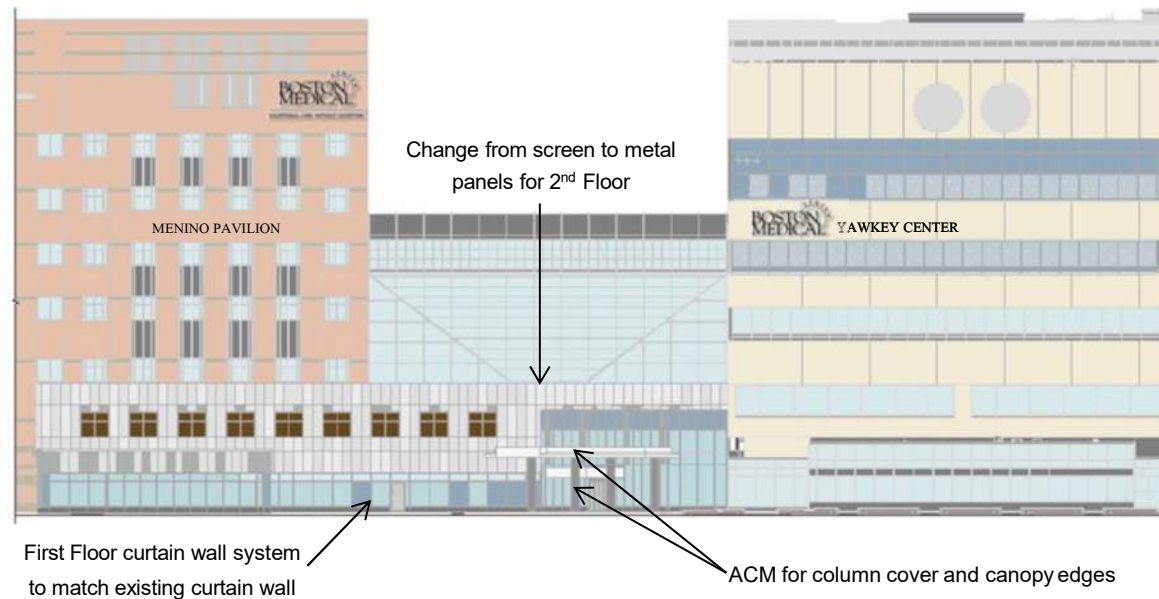
SOUTH END LANDMARKS DISTRICT COMMISSION, MARCH 11, 2024

PREVIOUSLY APPROVED 9/9/2022 AND PROPOSED LOBBY ADDITION ELEVATIONS

PREVIOUSLY APPROVED LOBBY
10/12/2022 NORTH ELEVATION



PROPOSED LOBBY
NORTH ELEVATION



MENINO/YAWKEY LOBBY ADDITION DESIGN REVIEW: MINOR REVISIONS SOUTH END LANDMARKS DISTRICT COMMISSION, MARCH 11, 2024



PREVIOUSLY APPROVED 10/12/2022 NEW LOBBY



PROPOSED NEW LOBBY ADDITION MODIFICATIONS

MENINO/YAWKEY LOBBY ADDITION DESIGN REVIEW: MINOR REVISIONS

SOUTH END LANDMARKS DISTRICT COMMISSION, MARCH 11, 2024



PREVIOUSLY APPROVED 10/12/2022 NEW LOBBY ADDITION NIGHT



PROPOSED NEW LOBBY ADDITION MODIFICATIONS NIGHT VIEW

MENINO/YAWKEY LOBBY ADDITION DESIGN REVIEW: MINOR REVISIONS

SOUTH END LANDMARKS DISTRICT COMMISSION, MARCH 11, 2024

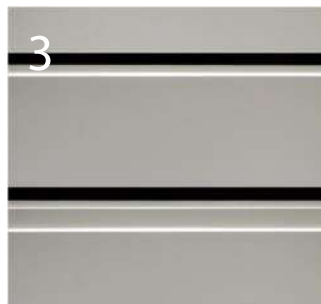
PREVIOUSLY APPROVED 10/12/2022 LOBBY MATERIAL (SEE NEXT PAGE FOR PROPOSED LOBBY MATERIAL SELECTIONS)



1
Granite Wall Base to Match Existing



2
Glazed Extruded Alum. Curtain Wall System



3
Extruded Alum. Metal Soffit



4
Aluminum Composite Material



5
Perforated Metal Screen

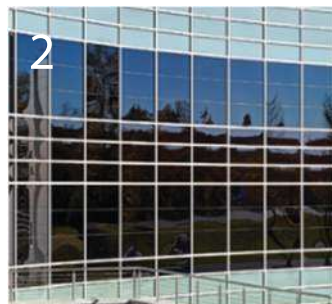
MENINO/YAWKEY LOBBY ADDITION DESIGN REVIEW: MINOR REVISIONS

SOUTH END LANDMARKS DISTRICT COMMISSION, MARCH 11, 2024

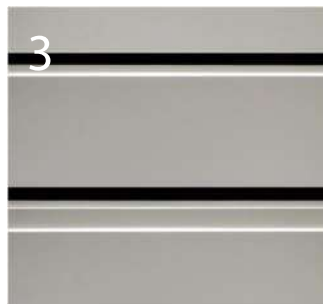
PROPOSED LOBBY MATERIAL (SEE PREVIOUS PAGE FOR PREVIOUSLY APPROVED LOBBY MATERIAL SELECTIONS)



1
Granite Wall Base to Match Existing



2
Glazed Extruded Alum. Curtain Wall System



3
Extruded Alum. Metal Soffit



4
Aluminum Composite Material

MENINO/YAWKEY LOBBY ADDITION DESIGN REVIEW: MINOR REVISIONS

SOUTH END LANDMARKS DISTRICT COMMISSION, MARCH 11, 2024

PEDESTRIAN RAMP PERSPECTIVE

PREVIOUSLY APPROVED
10/12/2022 RAMP



PROPOSED RAMP

