

1035 Cambridge Street
Cambridge MA 02141
T 617 661 9082
F 617 661 2550

PO Box 1520
Nantucket MA 02554
T 508 228 4342
F 508 228 3428

<http://www.design-associates.com>

RENOVATIONS TO:

I OTIS PLACE

I OTIS PLACE
BOSTON, MA 02108

DATE	REVISIONS
3/27/2024	FOR 4/18/2024 HEARING

Print Date:

FIRE DEPARTMENT
CONNECTION

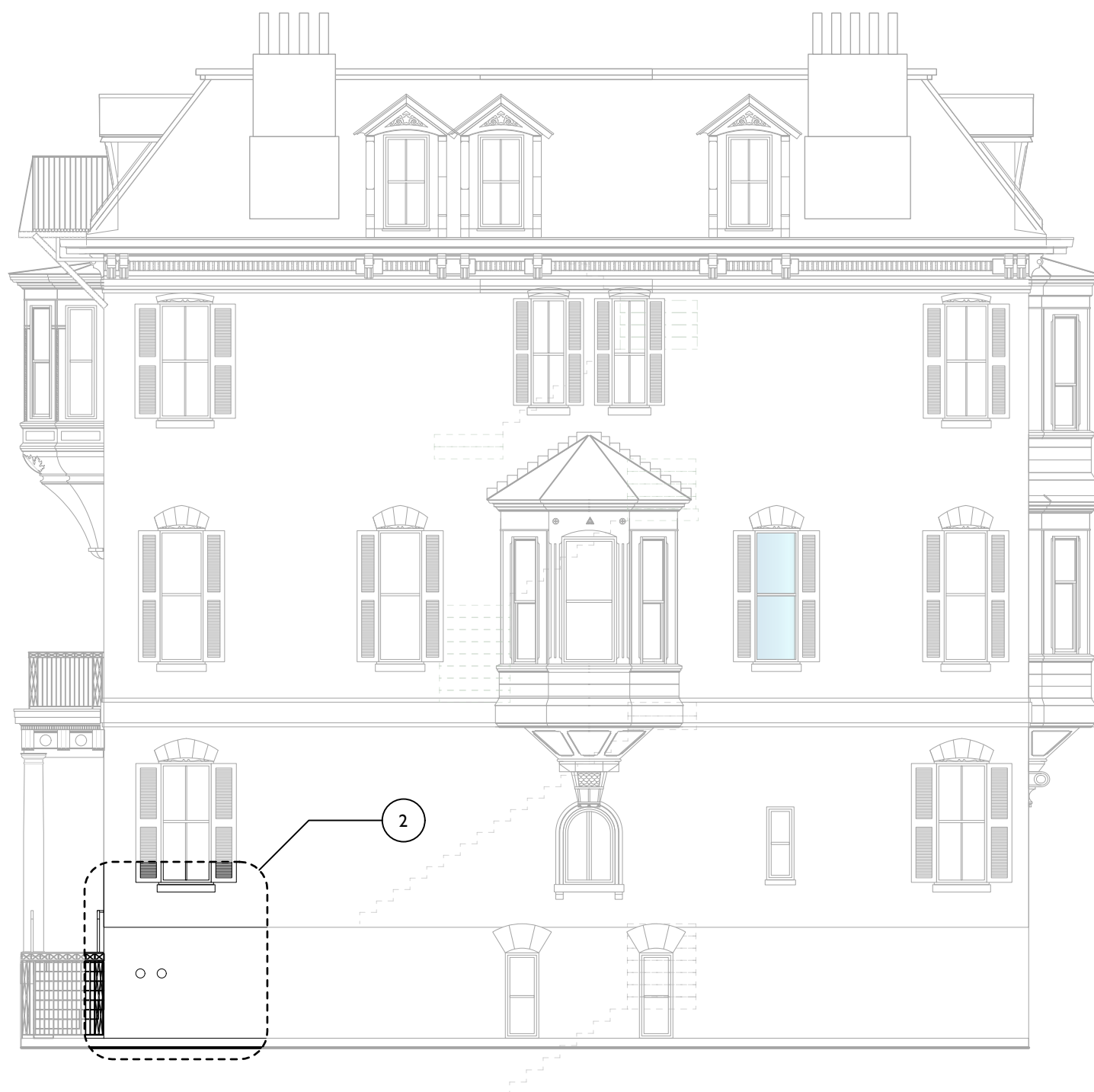
BHAC-I



EXISTING VIEW OF F.D.C. AT I OTIS PLACE
FROM & BRIMMER STREET

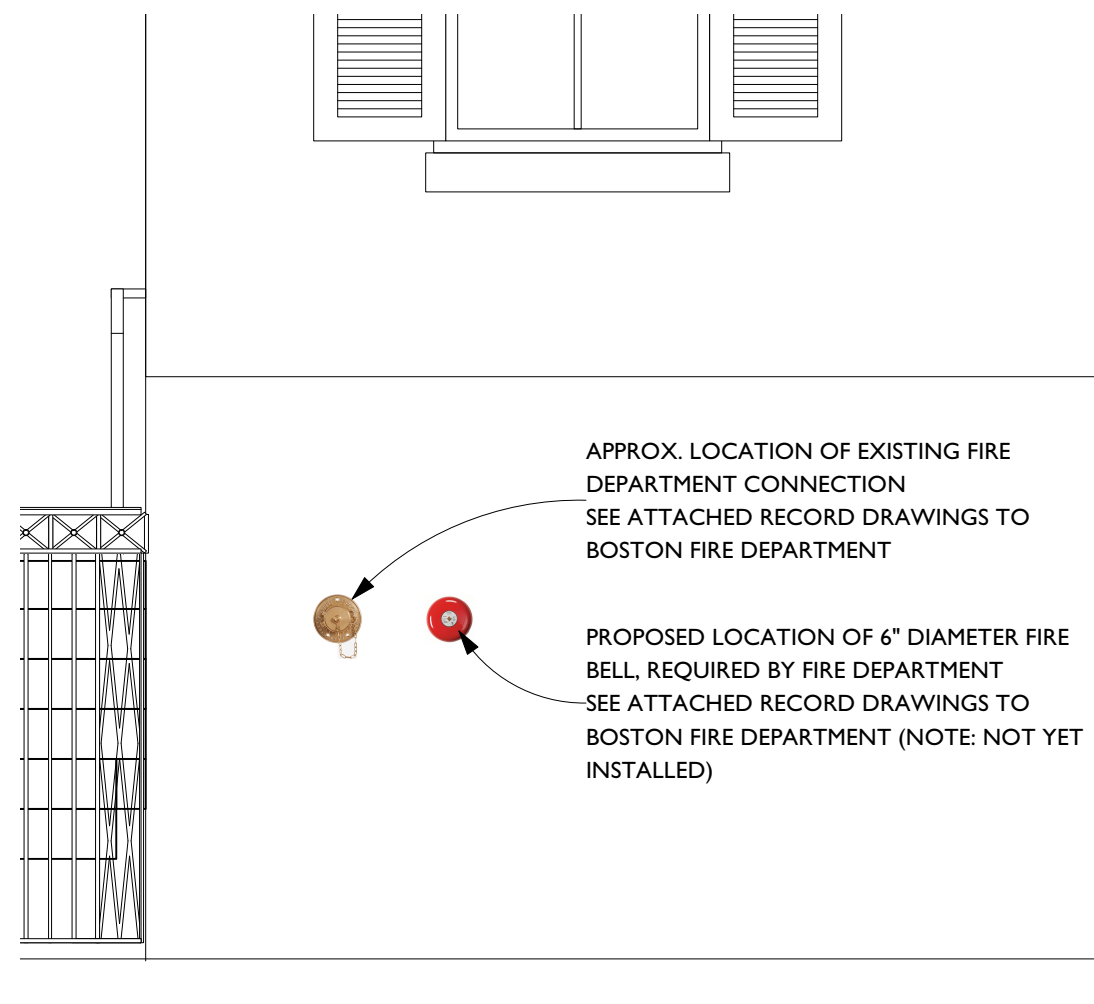


EXISTING VIEW OF F.D.C. WITH FIRE BELL
LOCATION AS PROPOSED BY FIRE
DEPARTMENT



1 PROPOSED WEST ELEVATION

Scale: 1/8" = 1'-0"



APPROX. LOCATION OF EXISTING FIRE
DEPARTMENT CONNECTION
SEE ATTACHED RECORD DRAWINGS TO
BOSTON FIRE DEPARTMENT

PROPOSED LOCATION OF 6" DIAMETER FIRE
BELL, REQUIRED BY FIRE DEPARTMENT
SEE ATTACHED RECORD DRAWINGS TO
BOSTON FIRE DEPARTMENT (NOTE: NOT YET
INSTALLED)

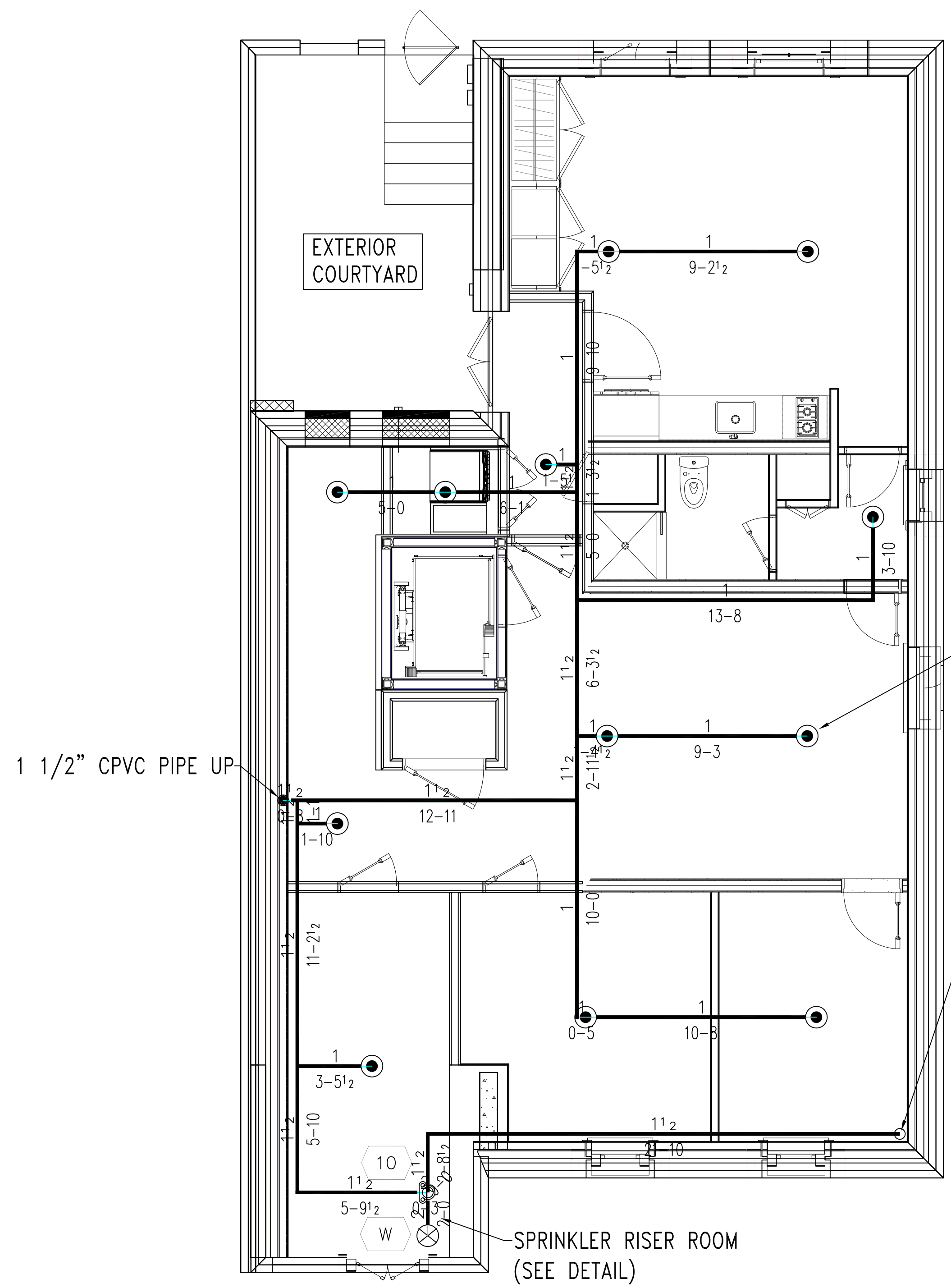
2 WEST ELEVATION DETAIL

Scale: 1/2" = 1'-0"

NOTE: IT IS THE OWNERS RESPONSIBILITY TO PROVIDE ADEQUATE HEAT (40 DEGREES FAHRENHEIT) AND TO MAINTAIN THE SPRINKLER SYSTEM PER NFPA 25

PROFESSIONAL FIRE SYSTEMS, INC.
304 TURNPIKE ROAD, SOUTHBOROUGH, MA 01772
THIS DRAWING IS THE PROPERTY OF PROFESSIONAL FIRE SYSTEMS, INC. ANY USE OR REPRODUCTION IN WHOLE OR PART IS PROHIBITED WITHOUT THE EXPRESSED WRITTEN CONSENT OF PROFESSIONAL FIRE SYSTEMS, INC. COPYRIGHT 2021 ALL RIGHTS RESERVED

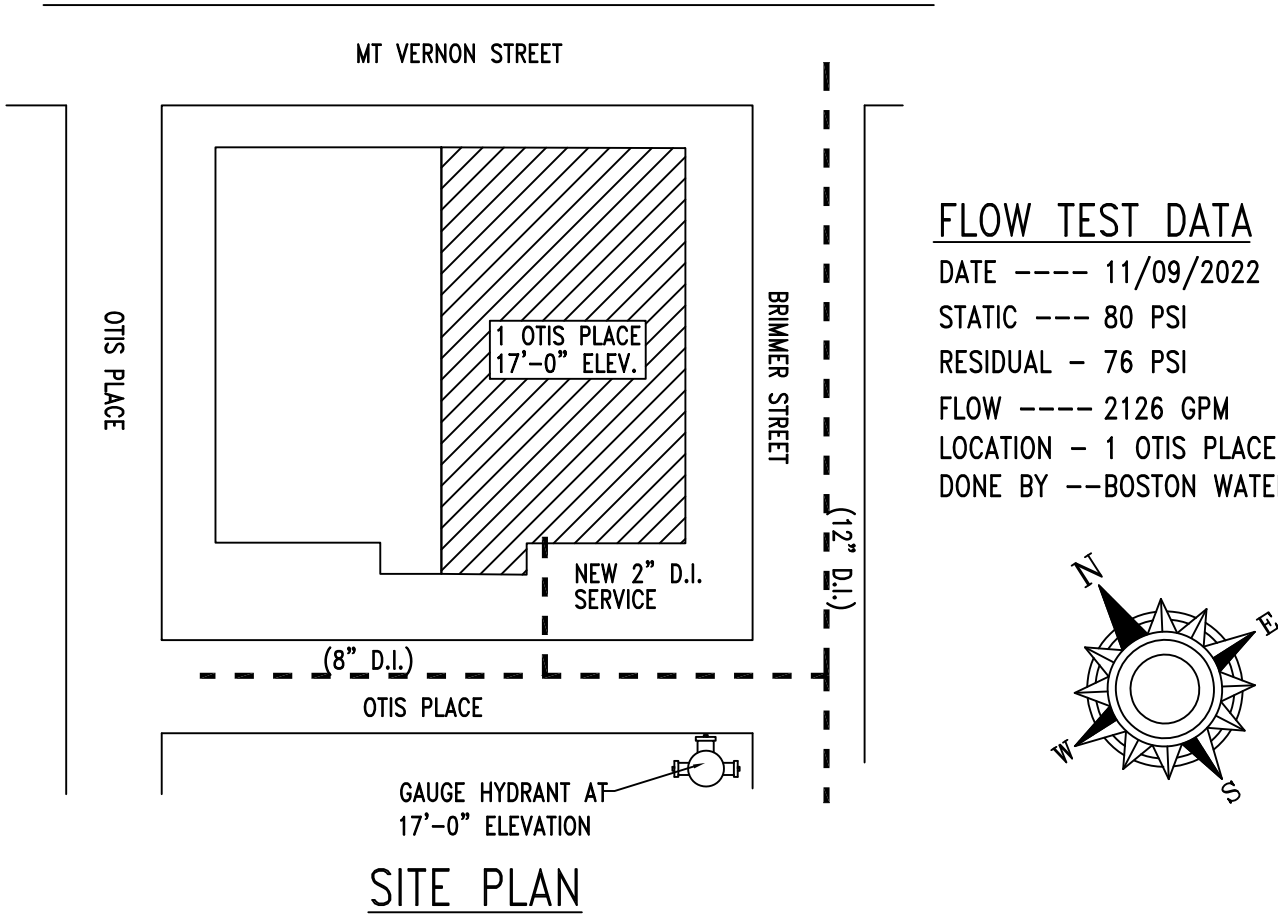
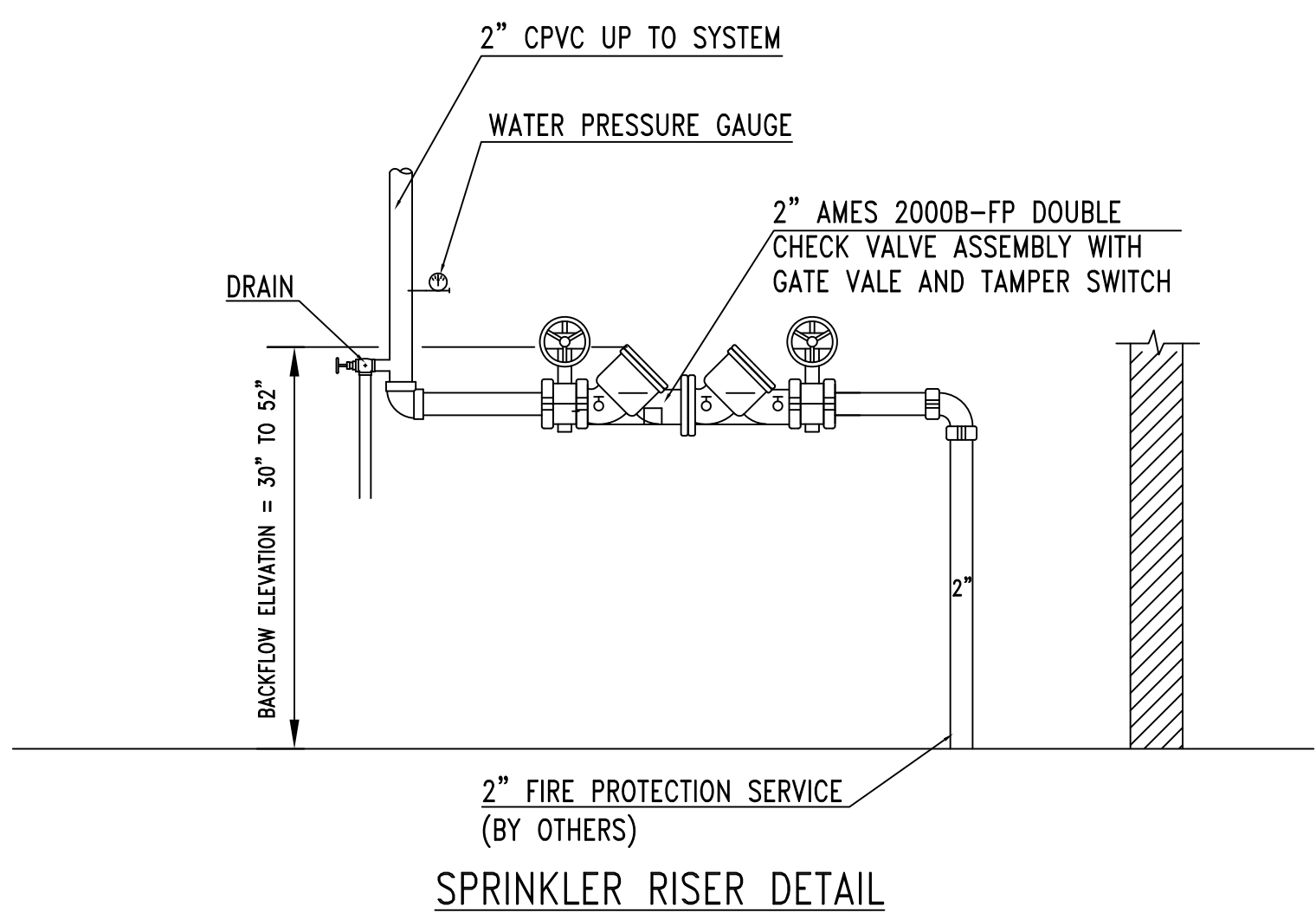
REVISION	DATE	NO.	BY



GARDEN LEVEL SPRINKLER SYSTEM
SCALE: 1/4"=1'-0"

HEAD BLOCK:

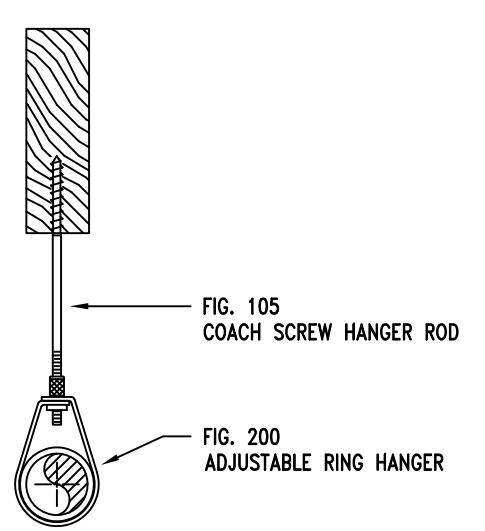
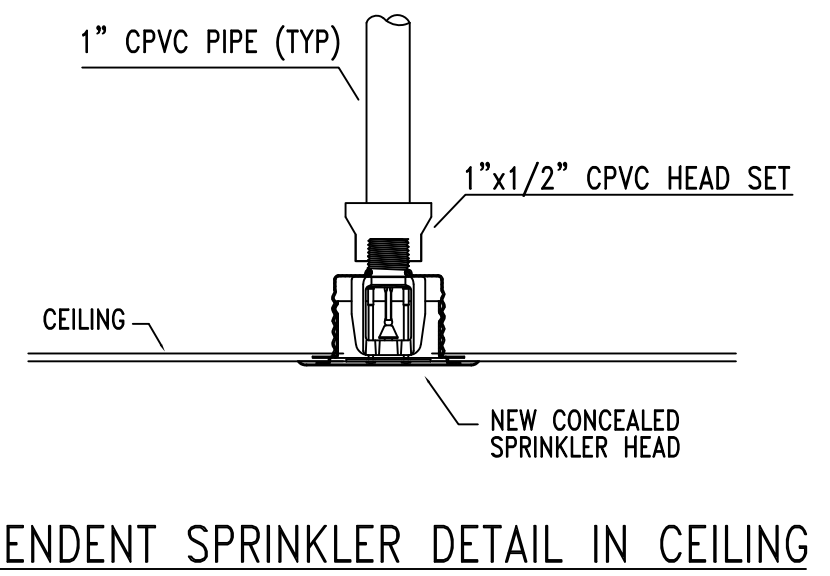
SYM	CNT	POSITION	FINISH	TEMP	K	NPT	SIN	MFG.	MODEL#
●	36	PEND	BRASS	155	4.90	1/2"	TY2534	Tyco	LFII
◁	1	SIDE	WHITE	175	4.20	1/2"	TY1334	Tyco	LFII



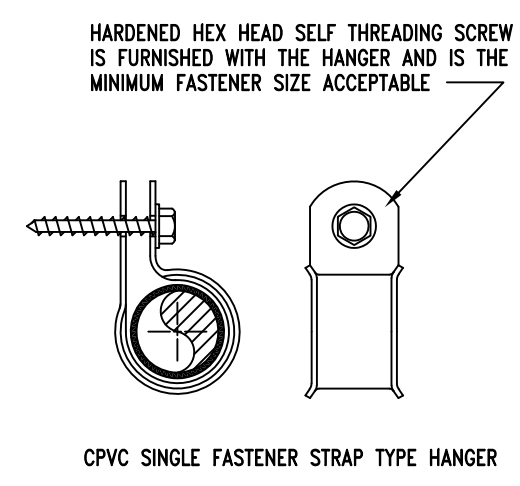
FLOW TEST DATA
DATE --- 11/09/2022
STATIC --- 80 PSI
RESIDUAL --- 76 PSI
FLOW --- 2126 GPM
LOCATION --- 1 OTIS PLACE
DONE BY --- BOSTON WATER & SEWER

TYPICAL NEW CONCEALED RESIDENTIAL PENDENT SPRINKLER HEADS WITH MAXIMUM HEAD SPACING OF 20'-0" X 20'-0". (SEE DETAIL)

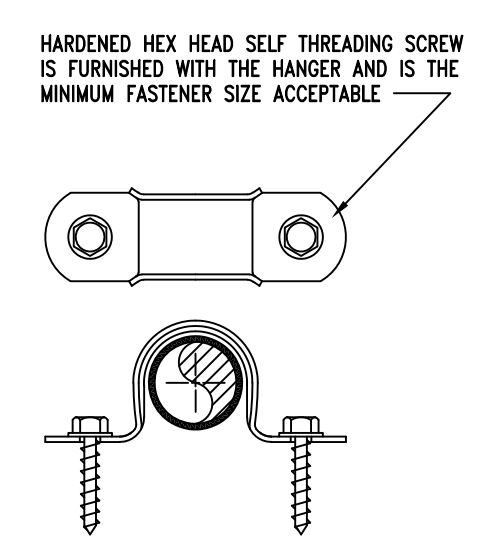
1 1/2" UP TO FIRE DEPARTMENT CONNECTION



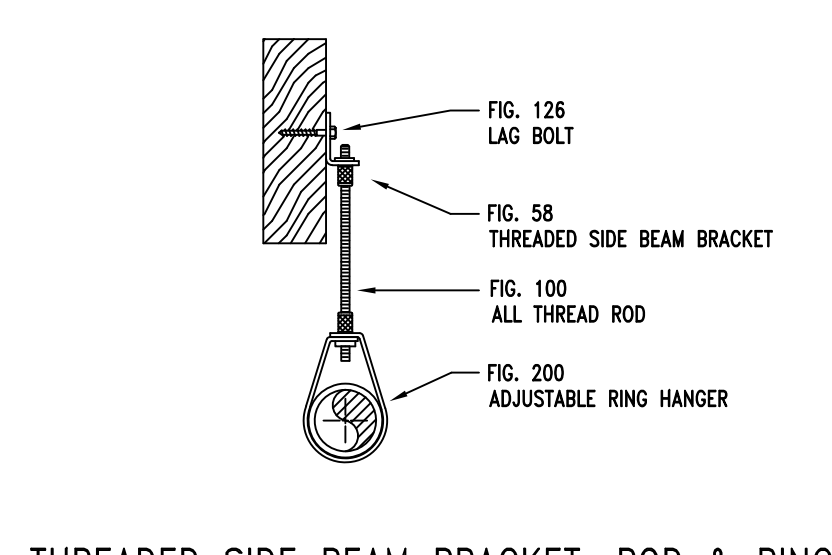
COACH SCREW ROD AND RING HANGER DETAIL



CPVC HANGER HANGER DETAIL



CPVC HANGER HANGER DETAIL



THREADED SIDE BEAM BRACKET, ROD & RING HANGER DETAIL

GENERAL NOTES:

SCOPE:
SCOPE OF WORK IS TO INSTALL COMPLETE SPRINKLER SYSTEM PER NFPA 13D (2013 EDITION). SPRINKLER SYSTEM TO BE SUPPLIED FROM NEW 2" SUPPLY LOCATED IN BASEMENT ALL NEW PIPING AND FITTINGS TO BE CPVC.

EXISTING CONDITIONS:
EXISTING 3 STORY DUPLEX RESIDENTIAL BUILDING ADDITION IS COMBUSTIBLE WOOD CONSTRUCTION.

OCCUPANCY DESCRIPTION:
OCCUPANCY IS RESIDENTIAL

DESIGN CRITERIA:
SPRINKLER SYSTEM HAS BEEN HYDRAULICALLY CALCULATED PER NFPA 13D (2013 EDITION) AS FOLLOWS, 2 MOST REMOTE SPRINKLER HEADS FLOWING 20 GPM (.05 DENSITY) EACH FOR MAXIMUM SPRINKLER HEAD SPACING OF 20' X 20'.

SYSTEM HAS BEEN DESIGNED PER NFPA 13D (2013 EDITION).

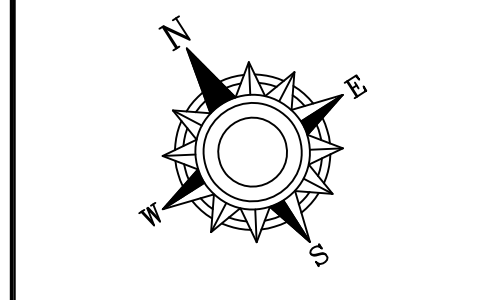
- NO SPRINKLER PROTECTION IS REQUIRED IN GARAGE & PORCH PER SECTION 8.3.4
- NO SPRINKLER PROTECTION IS REQUIRED IN ATTIC PER SECTION 8.3.5
- NO SPRINKLER PROTECTION IS REQUIRED IN CLOSET LESS THAN 24 Sq. Ft. PER SECTION 8.3.3
- NO SPRINKLER PROTECTION IS REQUIRED IN BATHROOMS LESS THAN 55 Sq. Ft. PER SECTION 8.3.2

MISCELLANEOUS:

1. DESIGN & INSTALLATION PER NFPA 13D (2013 EDITION), AND 9TH EDITION OF THE MASS. STATE BUILDING CODE.
2. ALL MATERIALS, DEVICES AND HANGERS SHALL BE INSTALLED IN ACCORDANCE WITH THEIR LISTINGS AND APPLICABLE NFPA ENGINEERING STANDARDS.
3. OWNER SHALL PROVIDE ADEQUATE HEAT TO PREVENT ANY WET-PIPE SPRINKLER PIPING FROM FREEZING. OWNER IS RESPONSIBLE TO MAINTAIN THE SPRINKLER SYSTEM IN ACCORDANCE THE LATEST EDITION OF NFPA 25. "INSPECTION, TESTING, AND MAINTENANCE OF WATER-BASED FIRE PROTECTION SYSTEMS". AND/OR ALL APPLICABLE FEDERAL, STATE AND/OR LOCAL LAWS, CODES AND ORDINANCES.
4. ALL ELECTRICAL WIRING OF TAMPER AND FLOW SWITCHES TO BE DONE BY A IICFNSFD FLECTRICAL CONTRACTOR.



Professional Fire Systems, Inc.
304 Turnpike Road
Southborough, MA 01772
License Number : SC210029
Expiration Date : 07/02/2024
Office: 508-625-1840
Fax: 508-625-1831
PRO-FIRESYSTEMS.COM



DATE: 11/09/2022
SCALE: AS NOTED
DRAWN BY: J.LAWTON
CONTRACTOR:
F.H. PERRY BUILDER, INC.

1 OTIS PLACE
1 OTIS PLACE
BOSTON, MA

SP-1

NOTE: IT IS THE OWNERS RESPONSIBILITY TO PROVIDE ADEQUATE HEAT (40 DEGREES FAHRENHEIT) AND TO MAINTAIN THE SPRINKLER SYSTEM PER NFPA 25

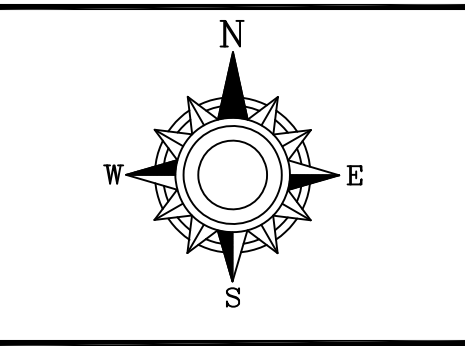
PROFESSIONAL FIRE SYSTEMS, INC.
 304 TURNPIKE ROAD, SOUTHBOROUGH, MA 01772
 THIS DRAWING IS THE PROPERTY OF PROFESSIONAL FIRE SYSTEMS, INC.
 ANY USE OR REPRODUCTION IN WHOLE OR PART IS PROHIBITED WITHOUT THE EXPRESSED WRITTEN CONSENT OF PROFESSIONAL FIRE SYSTEMS, INC.
 COPYRIGHT 2021 ALL RIGHTS RESERVED

NO.	DATE	REVISION
0	09/09/2022	REV

SEAL:



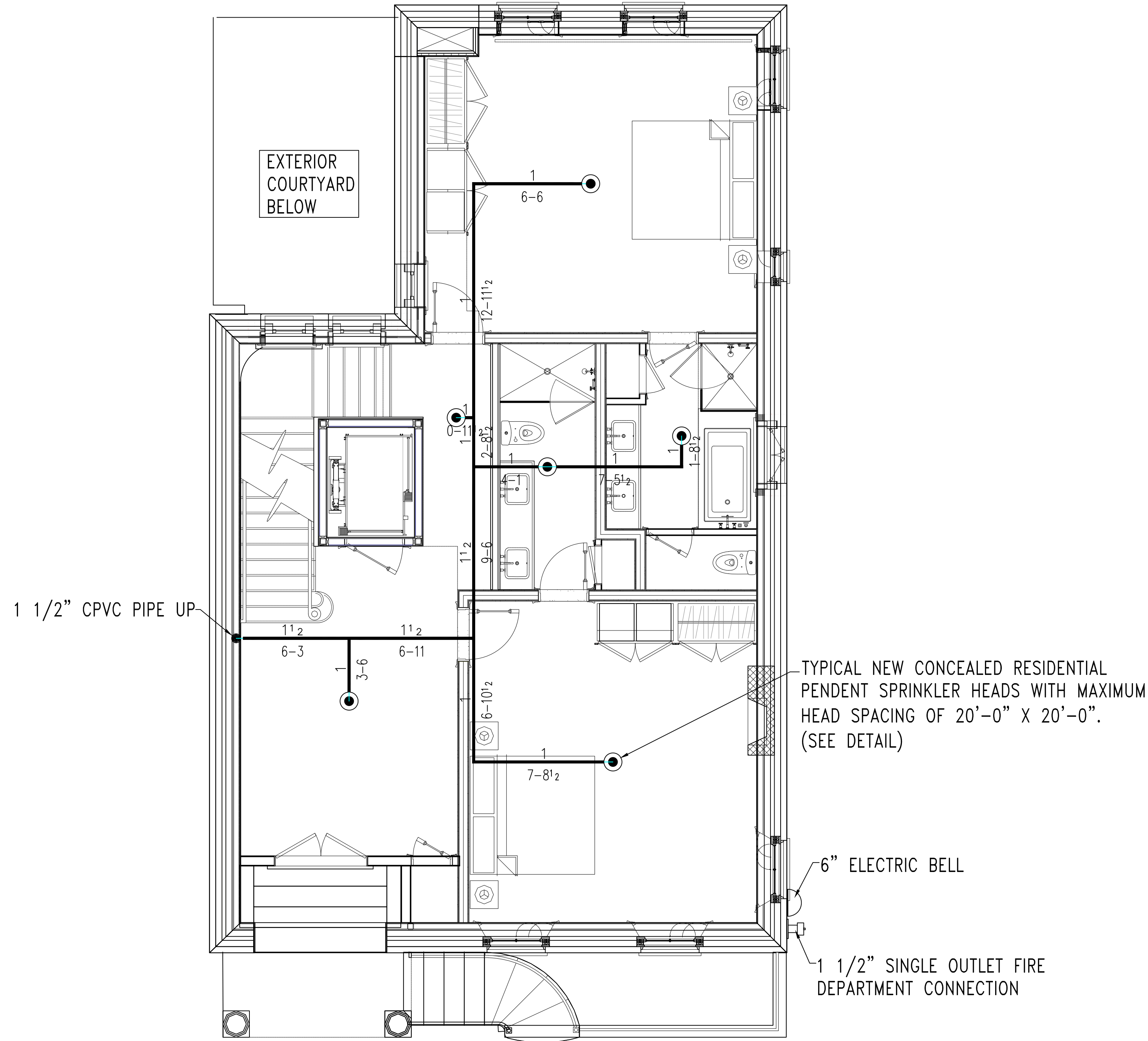
Professional Fire Systems, Inc.
 304 Turnpike Road
 Southborough, MA 01772
 License Number : SC210029
 Expiration Date : 07/02/2024
 Office: 508-625-1840
 Fax: 508-625-1831
 PRO-FIRESYSTEMS.COM



DATE: 11/09/2022
 SCALE: AS NOTED
 DRAWN BY: J.LAWTON
 CONTRACTOR:
 F.H. PERRY BUILDER, INC.

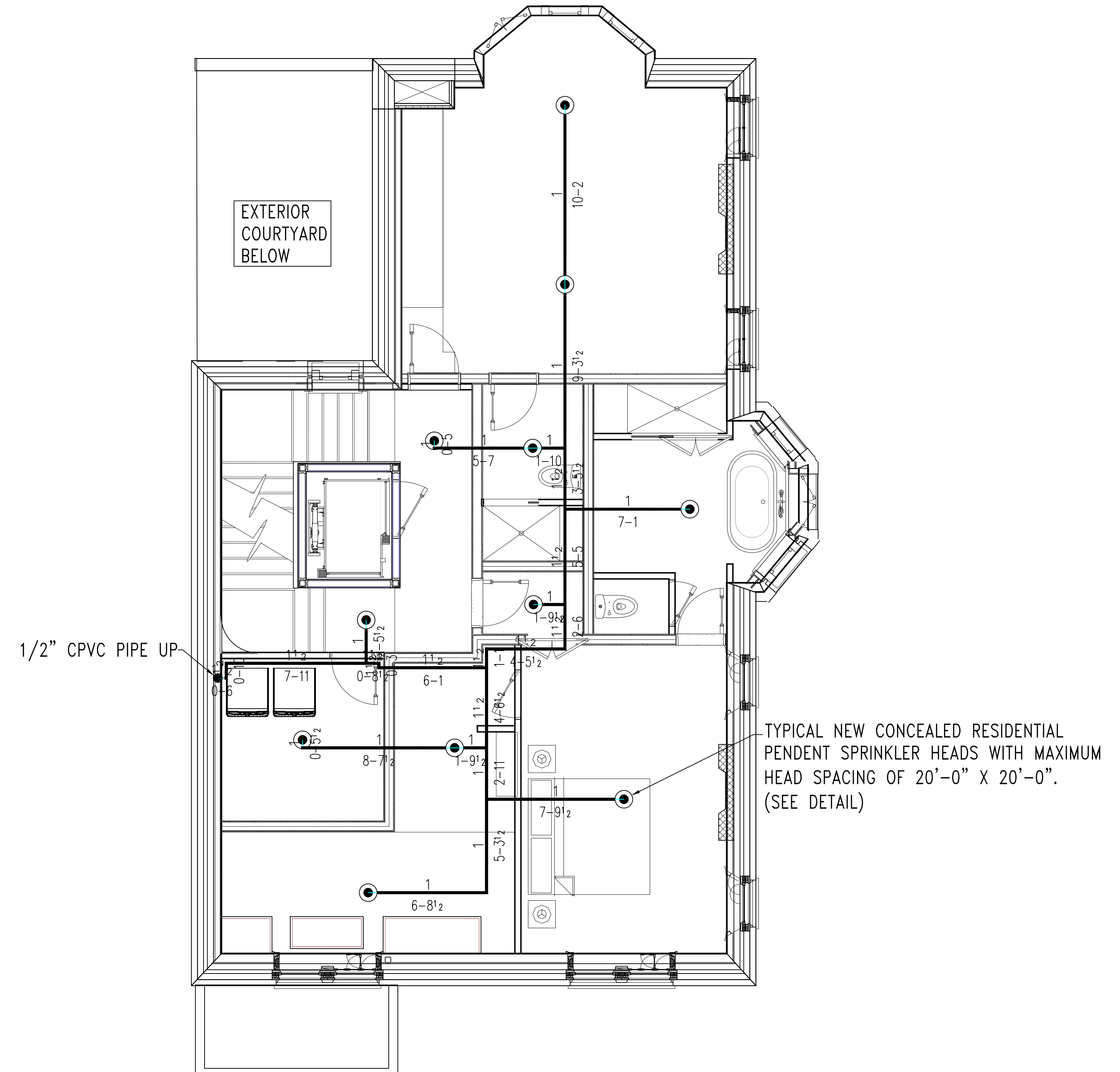
1 OTIS PLACE
 1 OTIS PLACE
 BOSTON, MA

SP-2



FIRST FLOOR SPRINKLER SYSTEM

SCALE: 1/4"=1'-0"



SECOND FLOOR SPRINKLER SYSTEM

SCALE: 1/4"=1'-0"