

Improvements To Watson Park I & II

Neighborhood Meeting #3 | 10 January 2024



CopleyWolff



The Boston Parks and Recreation Department will be recording the meeting and posting to our project webpage for those who are unable to attend the zoom meeting live.

It is possible that participants may also be recording the meeting with their phones, cameras, or other devices. If you do not wish to be recorded during this meeting, please keep your microphone and camera off.

Introduction | Zoom Tips

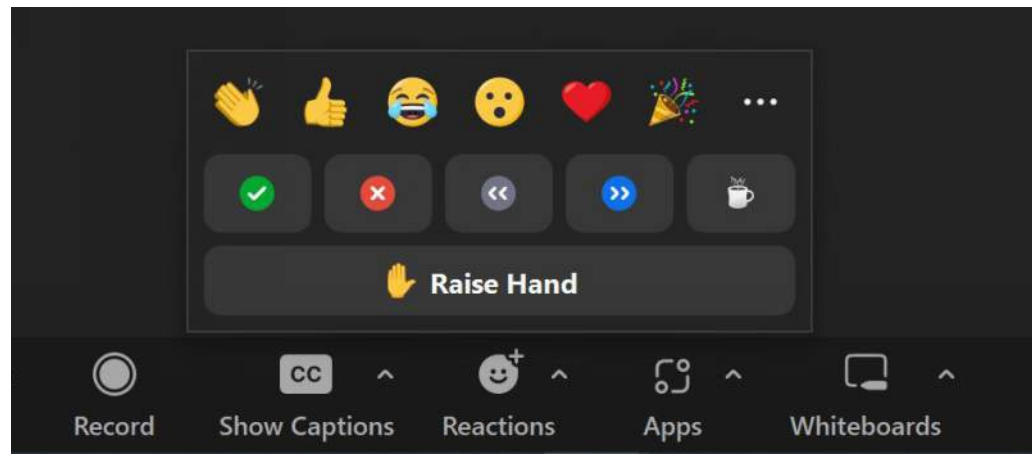
Here is how you can participate during the community feedback part of the presentation.

During the Presentation



VIA WEB:

Turn video on / off.



To use these non-verbal feedback options, click on Reactions (bottom of screen); these options will pop up above the button.

During the Discussion



JOINING VIA PHONE?

Use *9 to raise hand to ask for audio/video permission to ask questions or provide comments.



VIA WEB:

Chat to ask question/comments or to provide responses to poll questions.



Raise hand to ask for audio/video permission to ask questions or provide comments.

- 1 INTRODUCTION
- 2 PROJECT OVERVIEW
- 3 PRESENTATION
Summary of Previous Meeting
Concept Designs
- 4 COMMUNITY FEEDBACK
Listening + Discussion
- 5 CLOSING REMARKS + NEXT STEPS



B CHATFIELD

Project Manager

abigail.chatfield@boston.gov, 617-504-7709

JAMES HEROUX

Principal

Copley Wolff Design Group

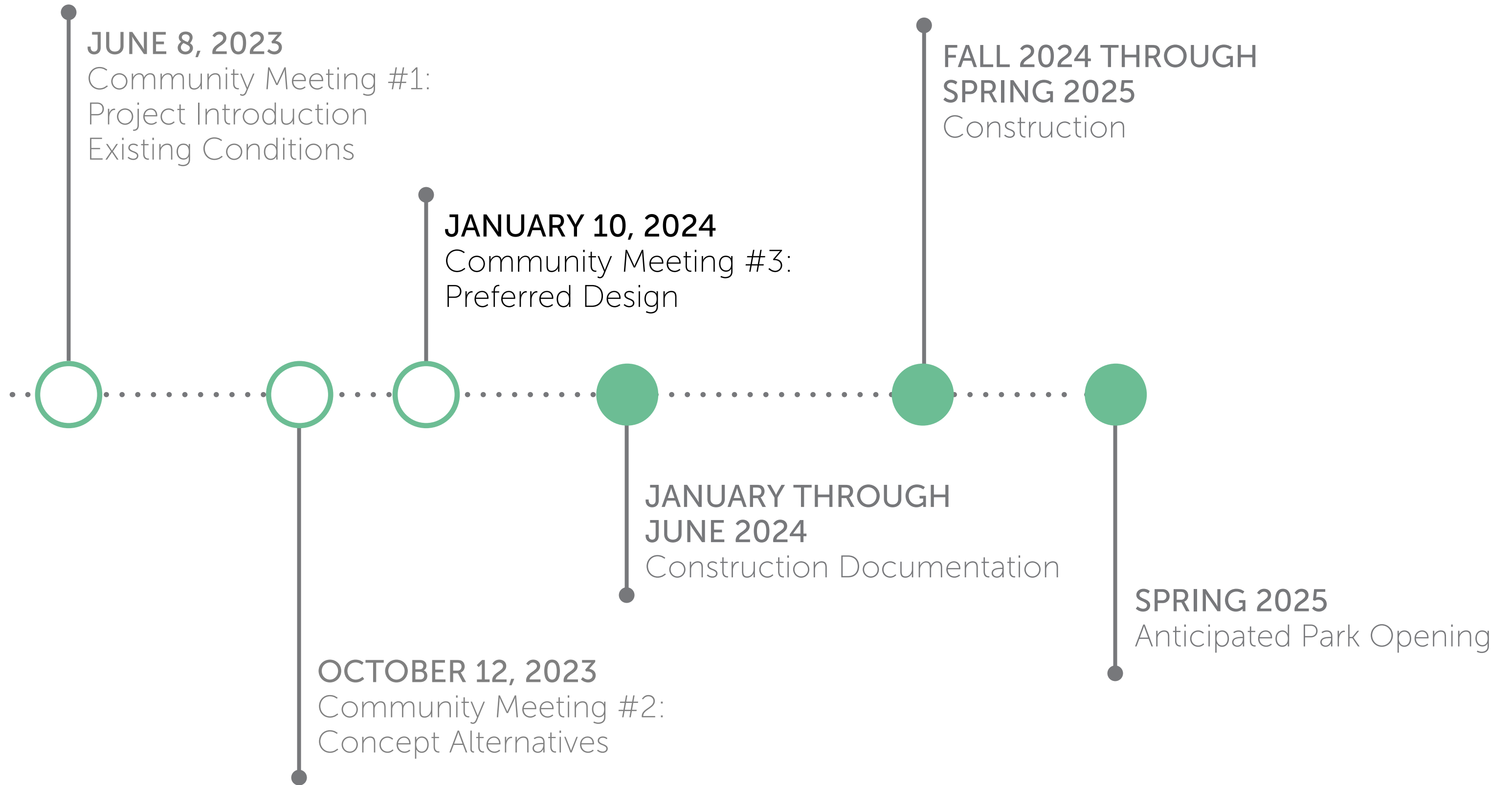
MICHAEL MacNULTY

Landscape Designer

Copley Wolff Design Group



Project Overview | Schedule





City of Boston Priorities

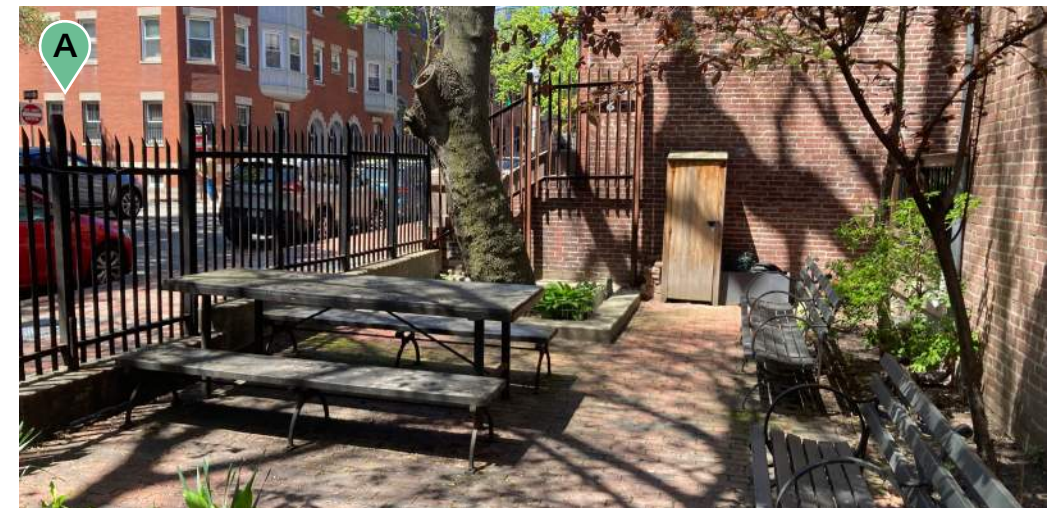
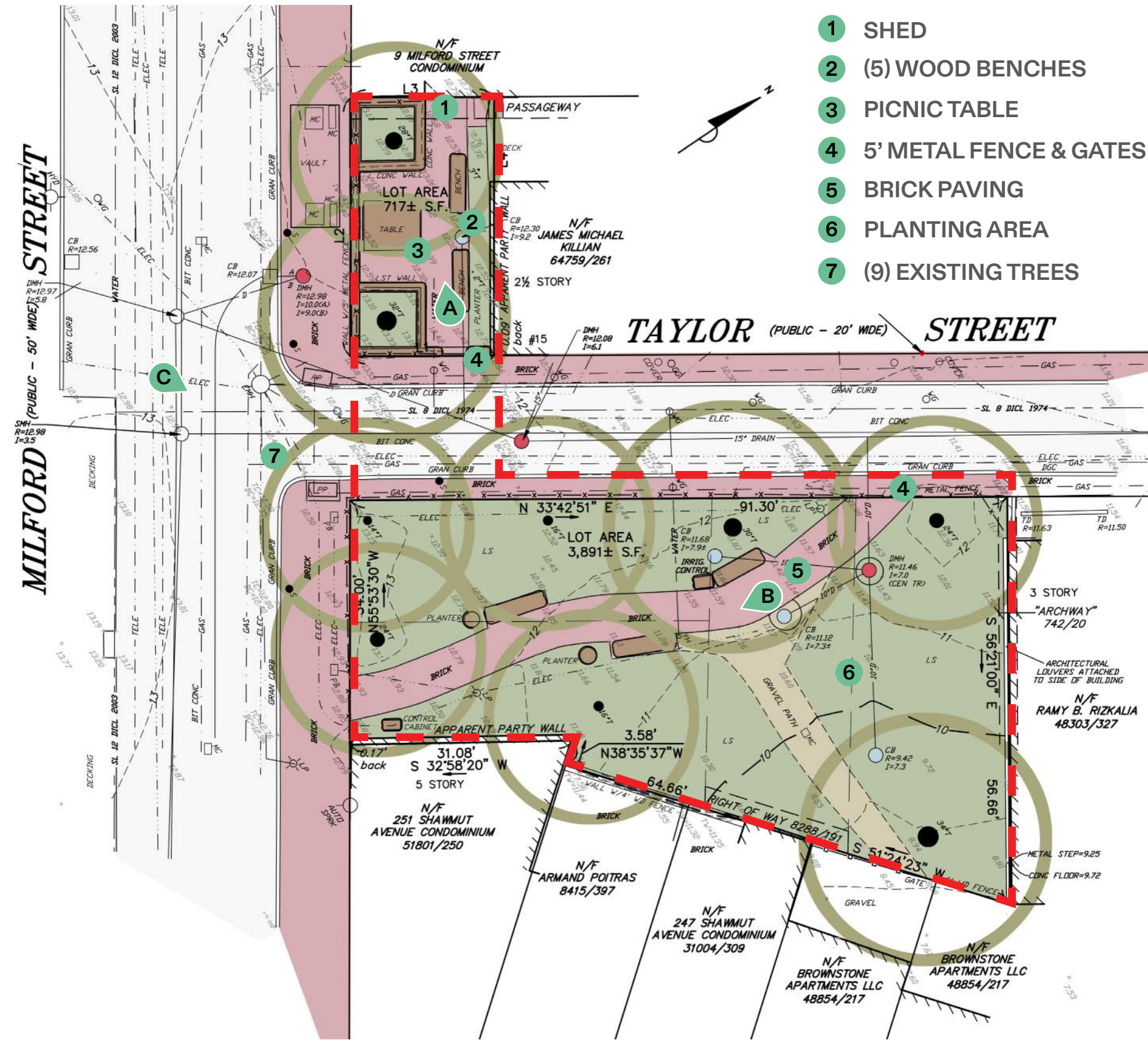
- 1 EXPANDING WALKABLE ACCESS TO PARK.
- 2 ADDRESSING EQUITY.
- 3 CLIMATE RESILIENCE.
- 4 HEALTH.
- 5 COMMUNITY BUILDING.

Parks & Recreation Goals

- 1 ACCESSIBLE AND AVAILABLE TO ALL.
- 2 DIVERSE, BALANCED, AND EFFICIENT MIX OF USES.
- 3 MEANINGFUL AND INCLUSIVE COMMUNITY ENGAGEMENT.
- 4 ADAPTIVE AND RESILIENT LANDSCAPES.
- 5 PROMOTE CONNECTIONS.



Project Overview | Existing Site Plan & Inventory



Site Context | Existing Site Conditions



EXISTING PATHWAY LIMITS COMMUNITY GATHERING AND HAS AN INACCESSIBLE CROSS PITCH.



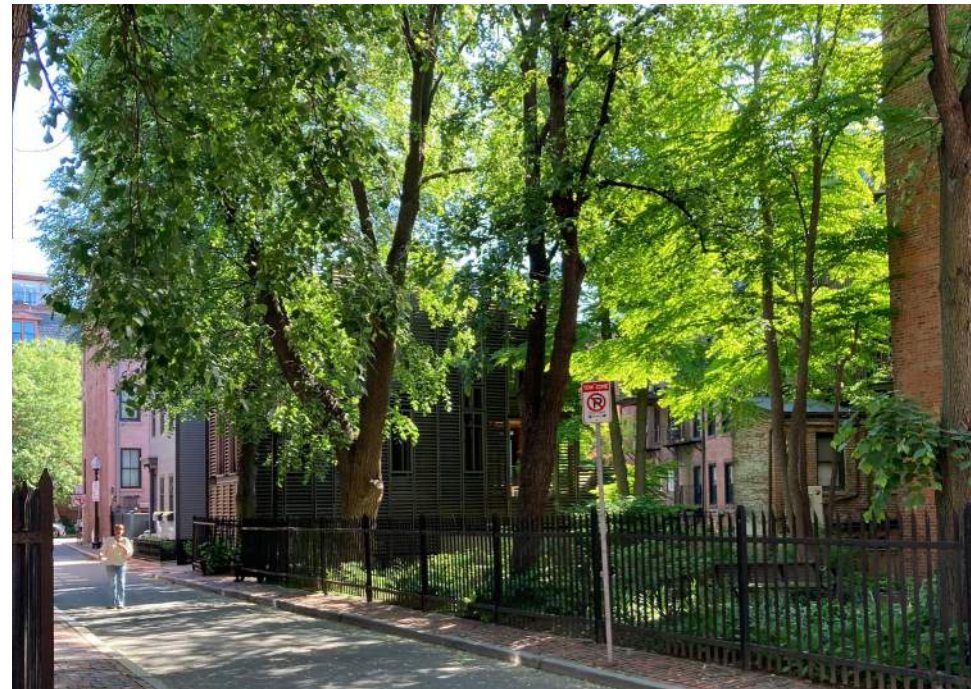
TALL PERIMETER FENCING IS NOT INVITING AND EXCLUDES TAYLOR ST. FROM THE PARK EXPERIENCE.



SLOPED GRADE ACROSS WATSON PARK CHANNELS STORM WATER INTO THE ADJACENT PROPERTY.



PARK GATE LOCATIONS PREVENT OPPORTUNITIES TO CONNECT BOTH PARKS.



EXISTING TREES LIMIT THE SUN'S ACCESS TO THE PARK AND RESTRICTS ITS PLANT PALETTE.



LITTLE WATSON PARK IS INACCESSIBLE DUE TO THE NARROW GATE AND A STEP DOWN WHEN ENTERING.

WATSON PARK

10 JANUARY 2023



CopleyWolff

Project Overview | Proposed Tree Removal

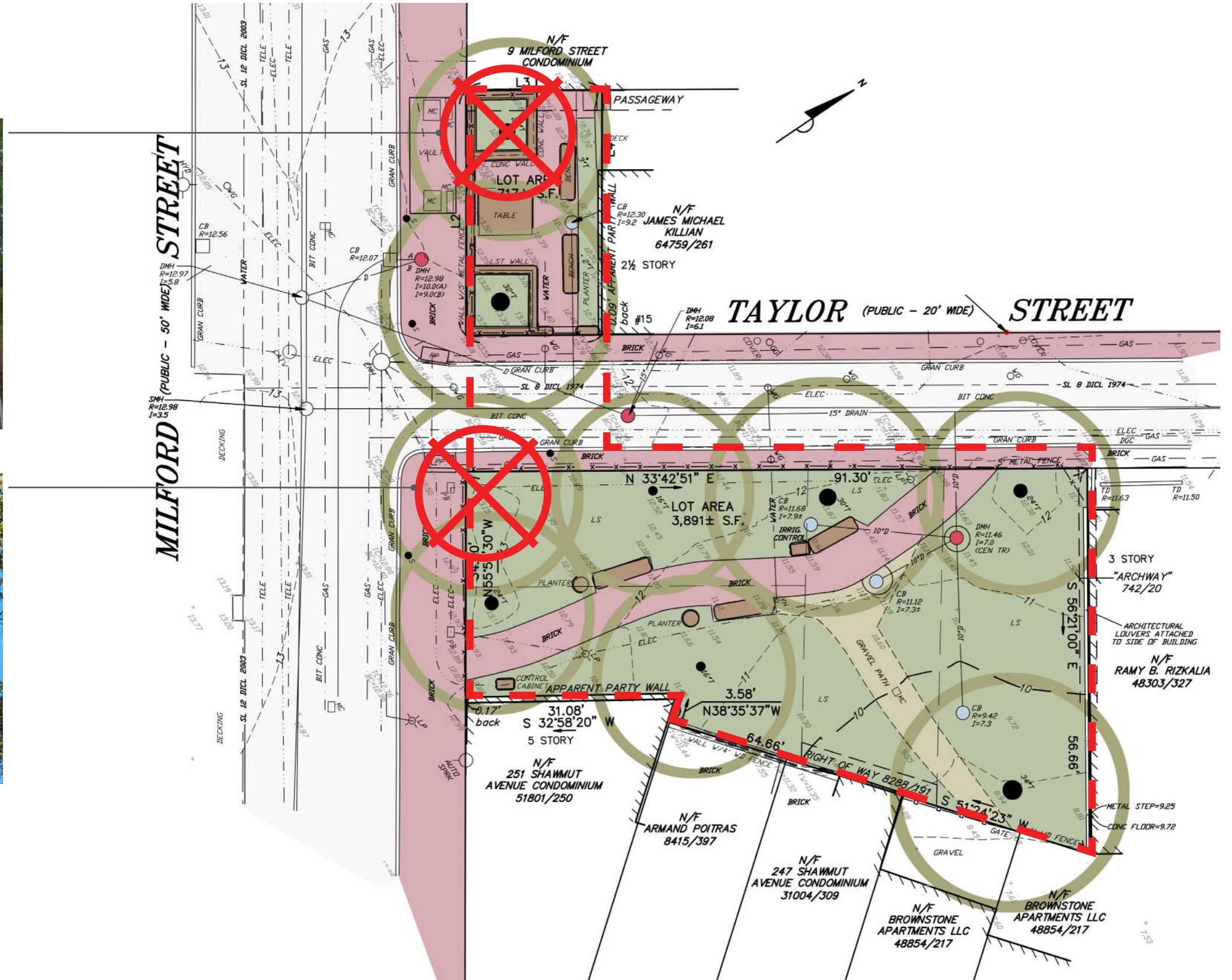
TREE OF HEAVEN
Ailanthus altissima

Reason for removal:
Invasive species



LINDEN TREE
Tilia cordata

Reason for removal:
Trunk decay
Insect activity

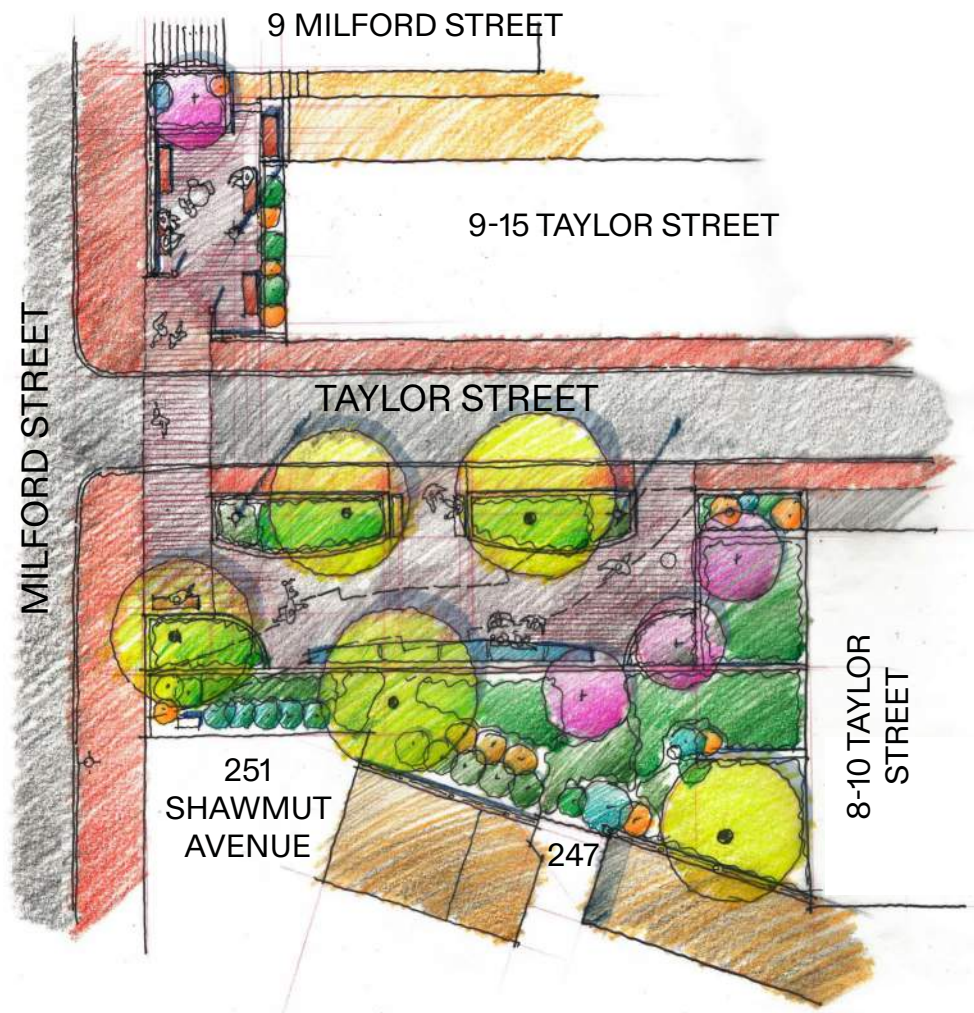


Watson Park Goals

- 1** PROVIDE A UNIVERSALLY ACCESSIBLE PARK BY MODIFYING EXISTING GRADES, WIDENING GATES, AND UPGRADING PAVEMENT MATERIALS.
- 2** CONNECT BOTH PARKS VISUALLY AND THROUGH PARK DETAILS.
- 3** PROVIDE GATHERING OPPORTUNITIES FOR THE COMMUNITY WITHIN THE PARK.
- 4** PROVIDE A PLANT PALETTE THAT IS SUCCESSFUL AND MAINTAINABLE BY THE COMMUNITY.
- 5** DESIGN A PARK THAT RECOGNIZES THE UNIQUE QUALITIES OF TAYLOR STREET.

CONCEPT A

EMBRACING TAYLOR STREET

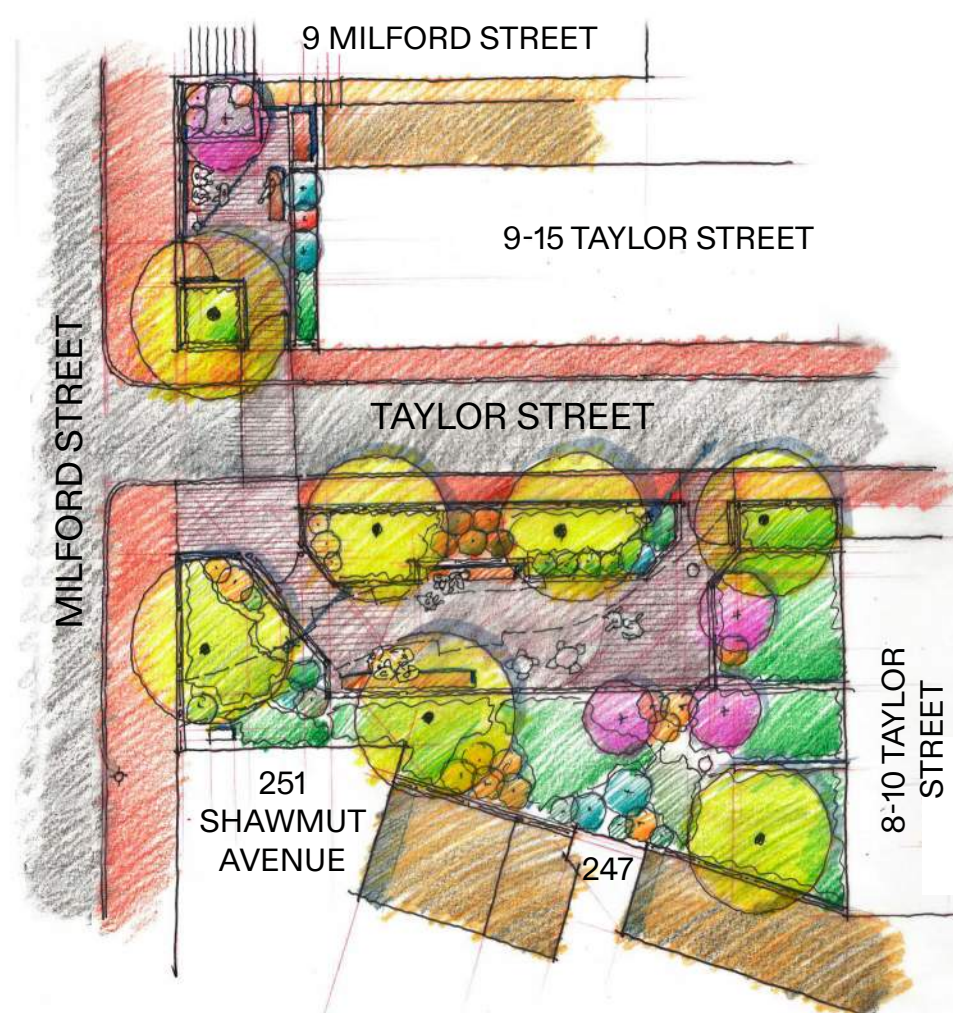


IMPORTANT FEATURES

- SCULPTURAL GRANITE SEATING
- KNITS TOGETHER WATSON & LITTLE WATSON
- (4) TREES REMOVED FOR MORE LIGHT IN BOTH PARKS
- LARGEST AREA OF GATHERING
- LARGE AREA OF PLANTING
- PROVIDES CONTINUITY

CONCEPT B

CONNECTED FENCED PARKS

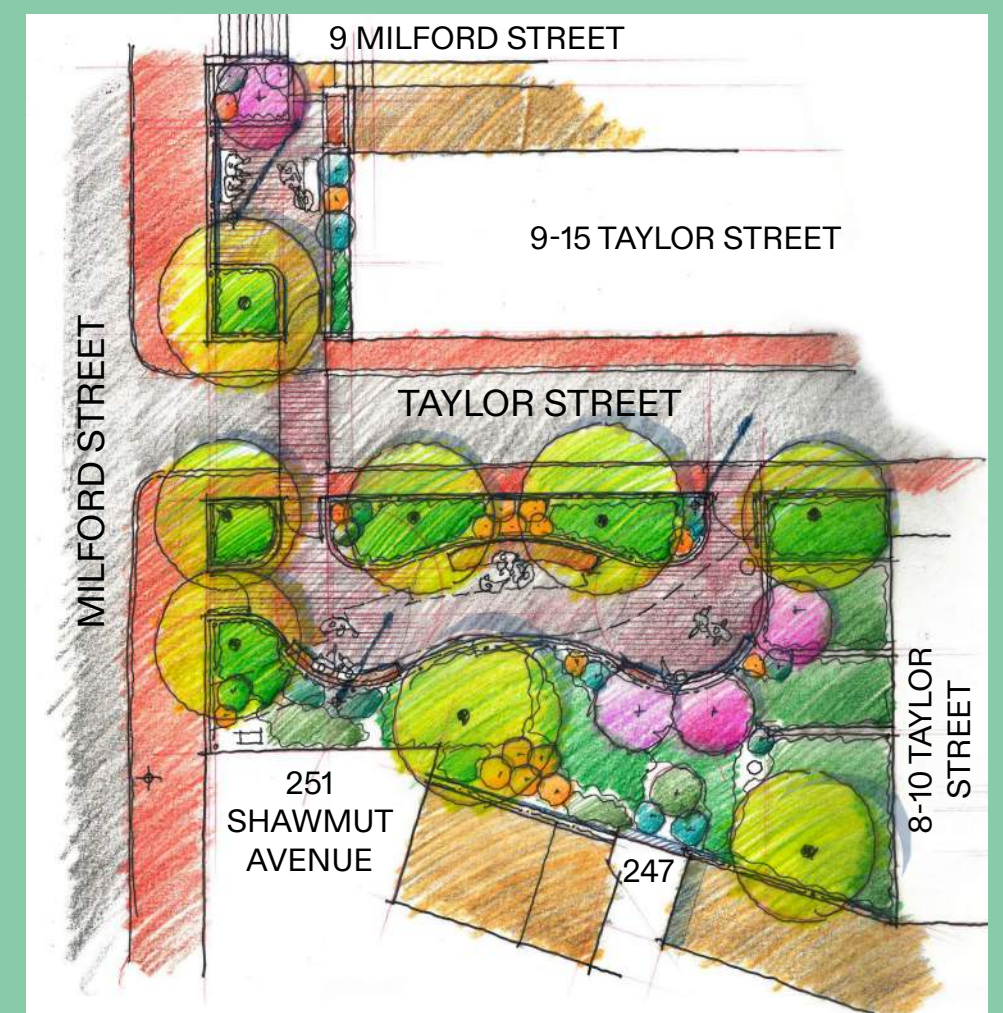


IMPORTANT FEATURES

- INVITING CORNER ENTRANCE
- SEATING INTEGRATED INTO PLANTING BEDS
- (2) ACCESSIBLE GATED ENTRIES TO LITTLE WATSON
- (2) TREES REMOVED FOR MORE LIGHT IN BOTH PARKS
- LARGE AREA OF GATHERING
- LARGER AREA OF PLANTING
- PROVIDES CONTINUITY

CONCEPT C

ORGANIC PARK

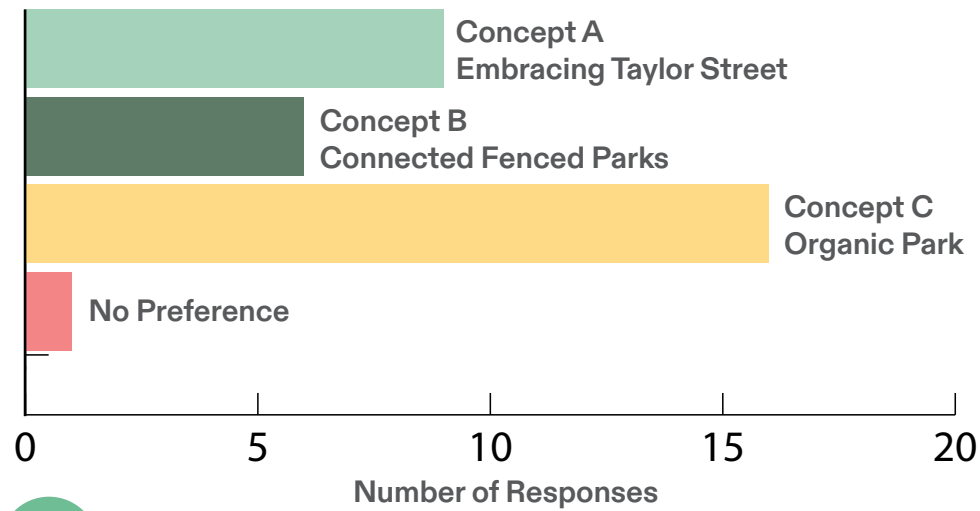


IMPORTANT FEATURES

- (2) MAIN GATED ENTRYWAYS
- (1) TREE REMOVED FOR STRUCTURAL REASONS
- MULTIPLE GATHERING AREAS
- LARGEST AREA OF PLANTING
- PROVIDES CONTINUITY

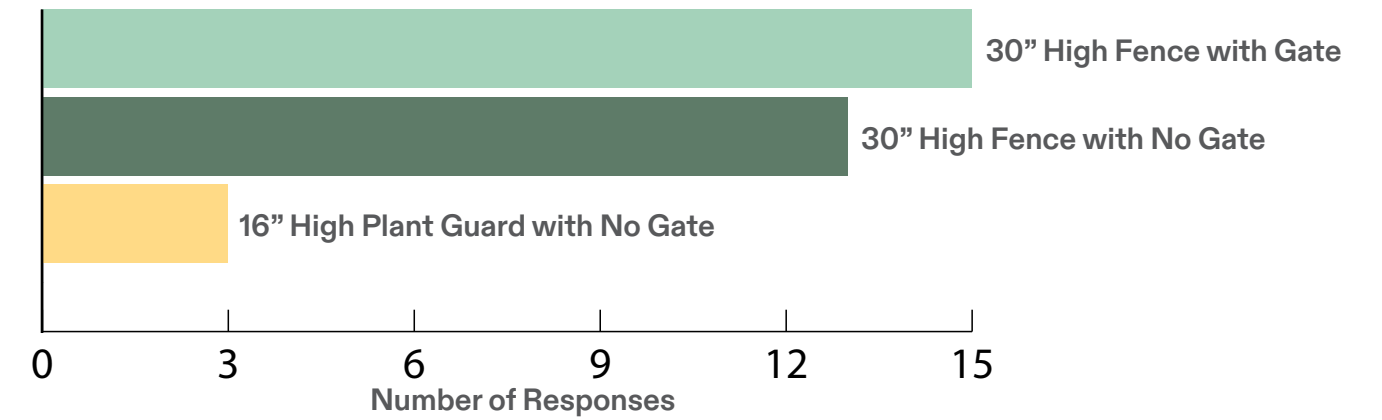
Q1

WHICH PARK CONCEPT DO YOU PREFER?



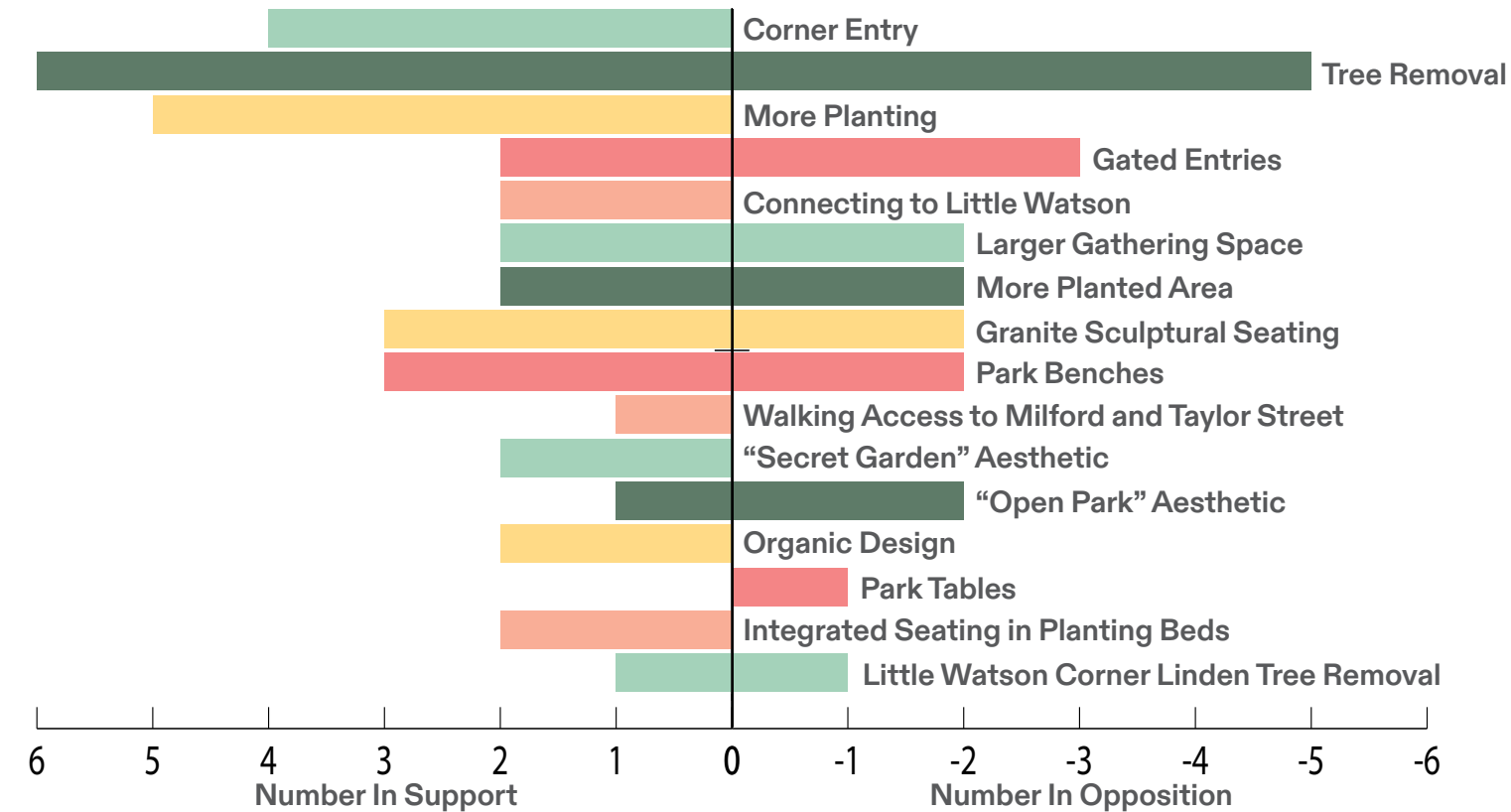
Q2

WHICH PERIMETER FENCING STYLE FITS BEST?



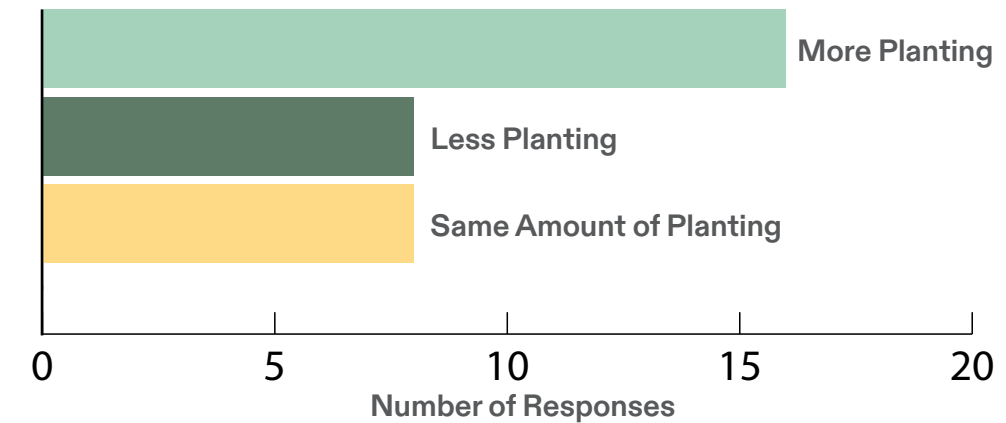
Q3

HOW DO YOU FEEL ABOUT THE PROPOSED FEATURES?



Q4

SHOULD THE AMOUNT OF PLANTING CHANGE?



Concept Imagery | Fencing and Plant Guard Options



CHAIN AND POST RAILING - OPTIONAL



30" TALL, OPEN PICKET METAL FENCE



GRANITE CURB AND PLANT GUARD COMBO



WIRE MESH PLANT GUARD - OPTIONAL



METAL PLANT GUARD WITH NO CURB - OPTIONAL

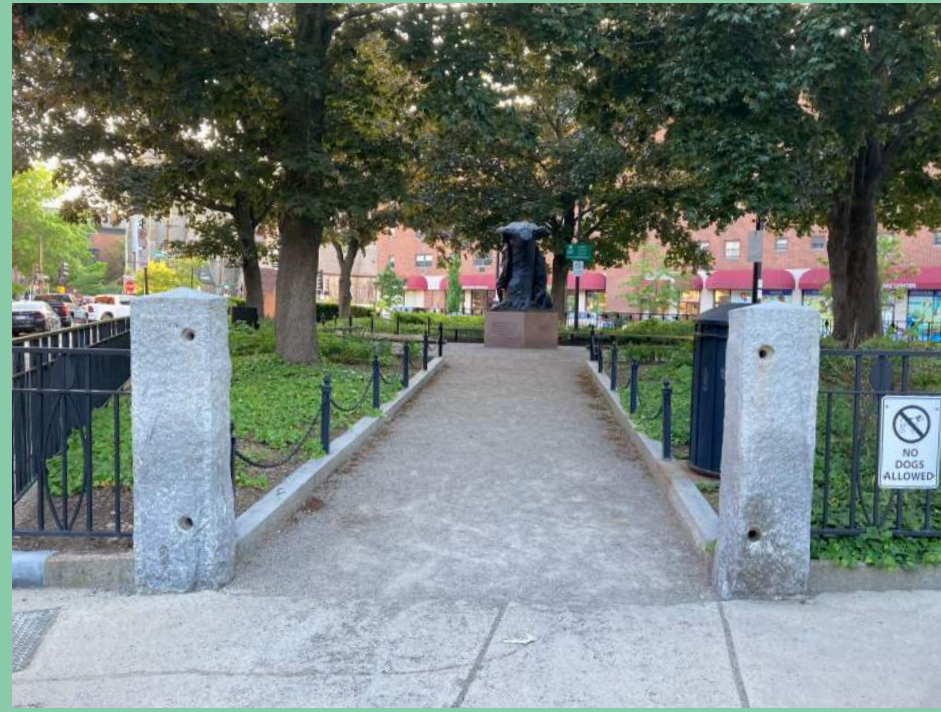


TIED WIRE PLANT GUARD - OPTIONAL

Concept Imagery | Park Entry Experiences



PARK EMBRACING PEDESTRIAN SCALED STREET



FENCED PARK WITH NO GATE



ORNAMENTAL GATE - OPTIONAL



UNIFIED PARK AND PEDESTRIAN STREET



FENCED PARK WITH OPTIONAL GATE



ORNAMENTAL GATE - OPTIONAL

WATSON PARK

10 JANUARY 2023



CopleyWolff

Concept Imagery | Site Furnishings and Pavers



WIRE STRUCK BRICK PAVERS (ADA FRIENDLY)



PAVER OPTIONS



GRANITE COBBLE BORDER - OPTIONAL



GRANITE ACCENT PAVER - OPTIONAL



UPDATE EXISTING SHED



LONG BENCHES



SCULPTURAL GRANITE SEAT WALL OPTION



STANDARD LIGHT FIXTURE



STANDARD BENCHES

Concept Imagery | Examples of Large Ornamental Shrubs/Small Flowering Trees



DOGWOOD



REDBUD

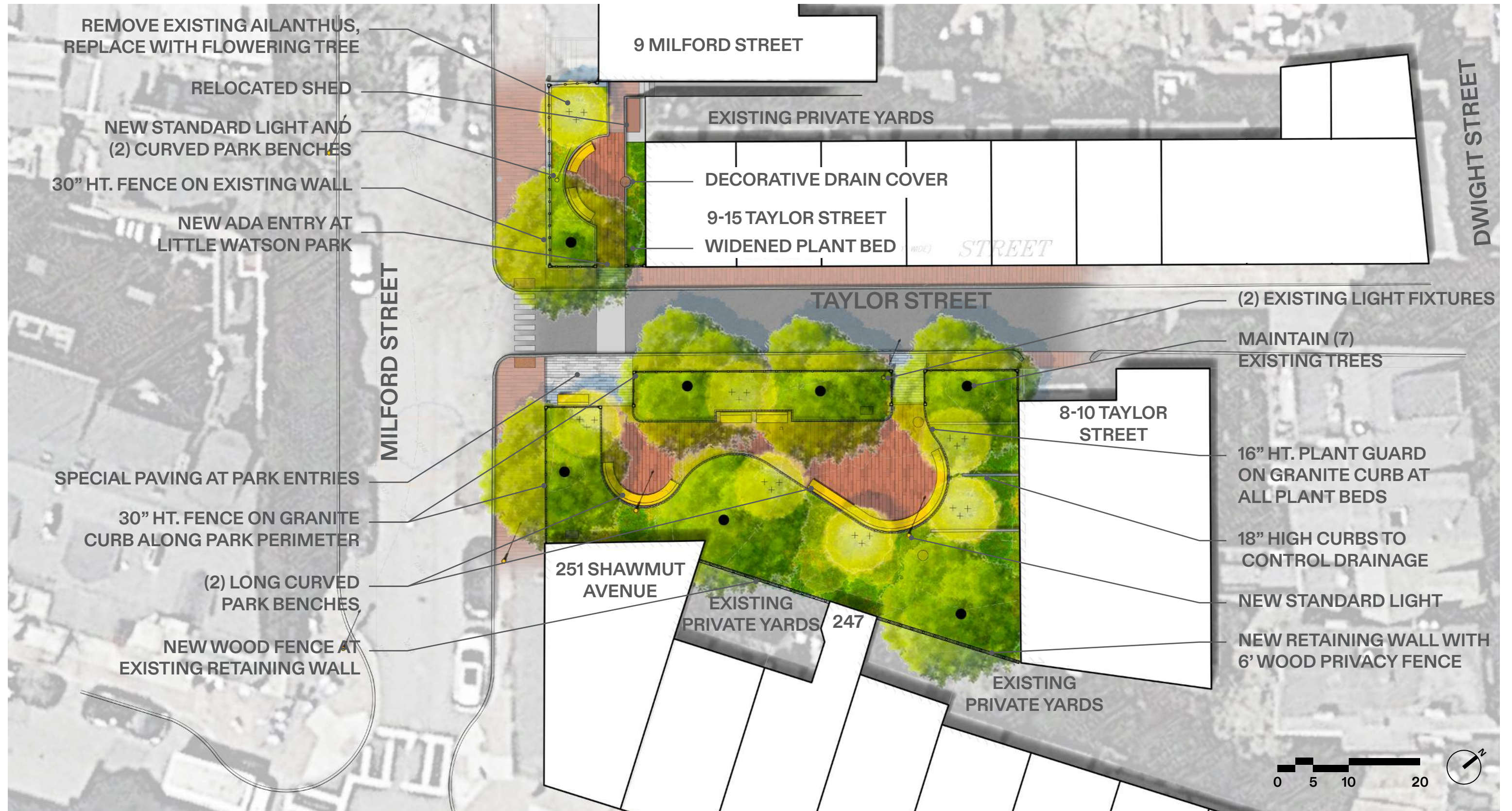


TREE HYDRANGEA

Design Concept | Connected Organic Park



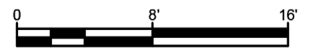
Design Concept | Connected Organic Park



Design Concept | Taylor Street Elevation View



Design Concept | Milford Street Elevation View



Design Concept | Gathering Space Section View

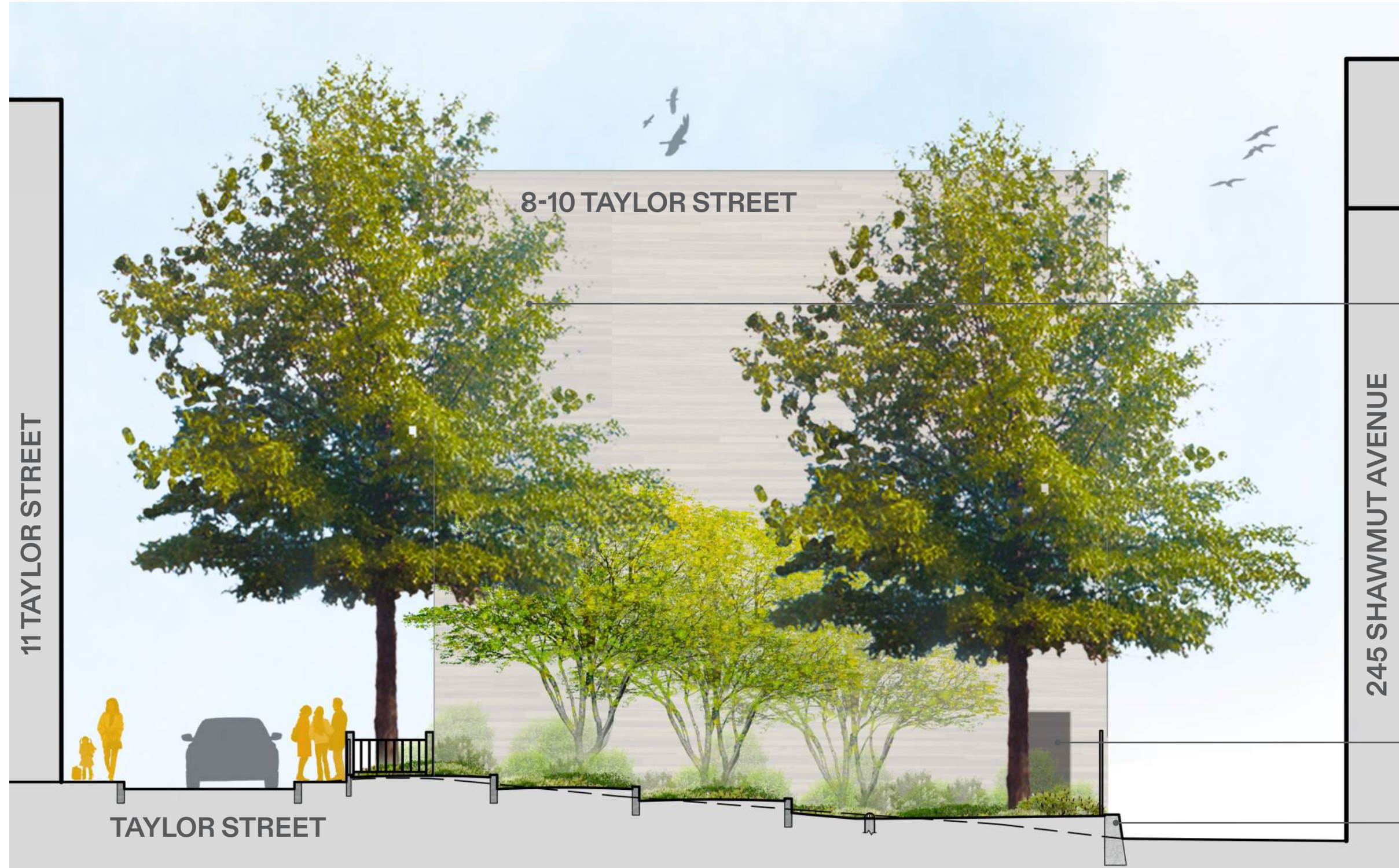


EXISTING TREES TO REMAIN

NEW LOW RETAINING WALL AND 6' HT WOOD FENCE IN FOREGROUND



Design Concept | Terraced Landscape Section View



EXISTING TREES TO REMAIN

PRESERVE ACCESS TO EXISTING DOOR

NEW LOW RETAINING WALL AND 6' HT WOOD FENCE



Design Concept | Planting Palette

Shrub Planting



Aronia arbutifolia
Red Chokeberry
April-January



Viburnum lentago
Nannyberry
May-September



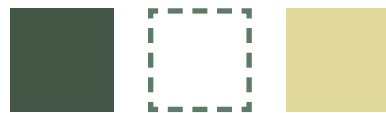
Taxus canadensis
American Yew
April-May



Shade Planting



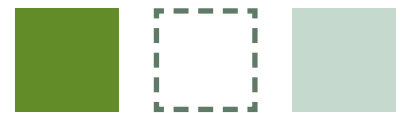
Astilbe x arendsii
Bridal Veil Astilbe
May-July



Monarda didyma
Scarlet Beebalm
July-August



Convallaria majalis
Lily of the Valley
March-May



Groundcover Planting



Liriope muscari
Big Blue Lily Turf
August-September



Vinca minor
Myrtle
March-October



Arctostaphylos uva-ursi
Bearberry
March-May





WATSON PARK

10 JANUARY 2023



CopleyWolff

WHAT LEVEL OF ENCLOSURE WOULD YOU LIKE TO SEE AT THE PARKS' PERIMETER?

WHAT TYPE OF SEATING SHOULD WATSON PARK PROVIDE?

WHICH STYLE OF PAVERS DO YOU PREFER?

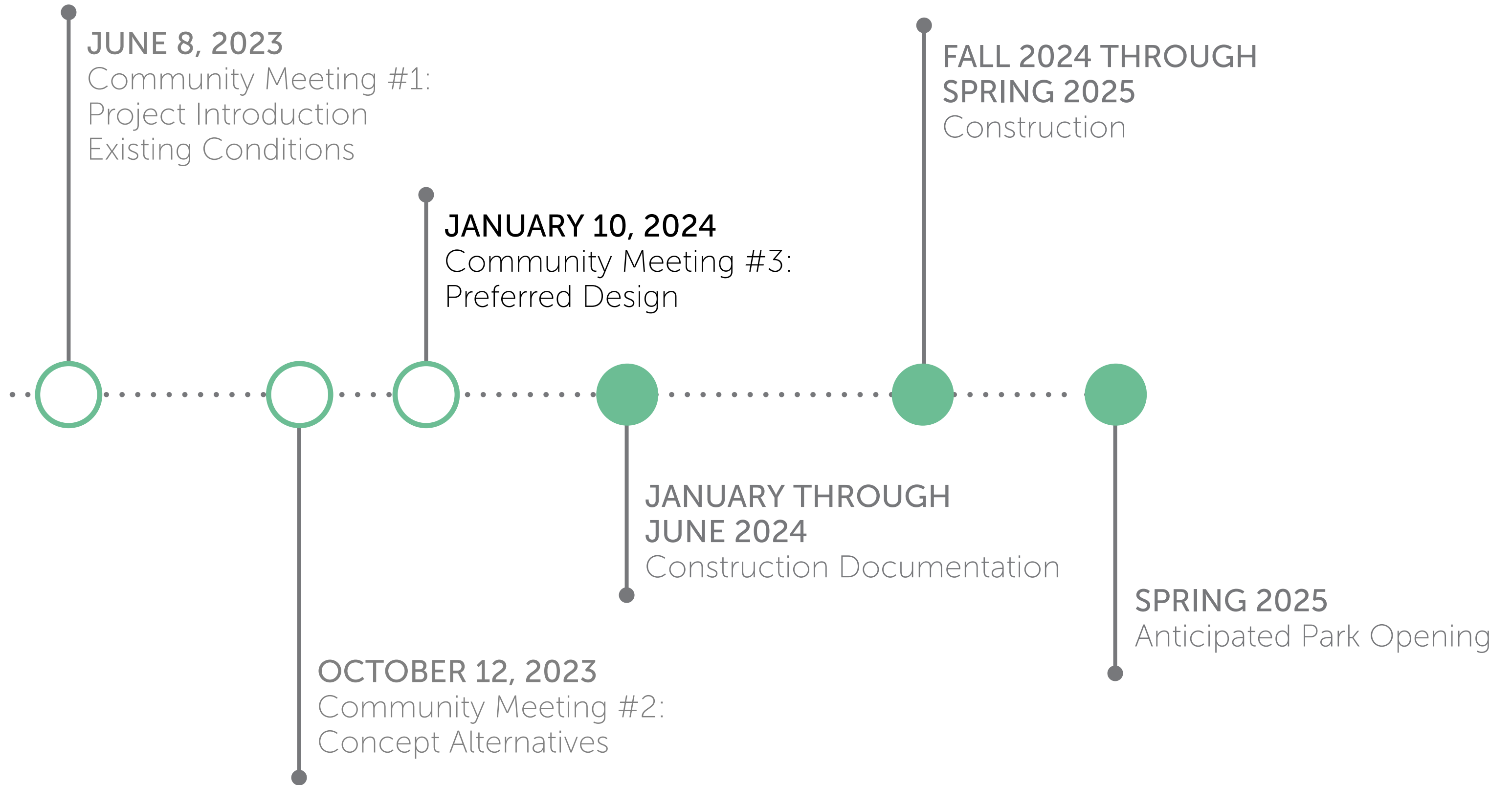
HOW IMPORTANT IS ADDING GATES TO THE PERIMETER FENCING?

WHAT SHOULD THE CROSSWALK FROM LITTLE WATSON PARK BE MADE OF?

Design Concept | Connected Organic Park



Project Overview | Schedule



THANK YOU FOR YOUR PARTICIPATION IN THESE MEETINGS!

PLEASE VISIT THE WEBSITE:

[https://www.boston.gov/departments/parks-and-recreation/
improvements-watson-park-i-and-ii](https://www.boston.gov/departments/parks-and-recreation/improvements-watson-park-i-and-ii)



Scan me with your
phone's camera!

JOIN PUBLIC CPA MEETINGS:

THURSDAY, JANUARY 11, 5:30 PM

THURSDAY, JANUARY 18, 12 NOON

MONDAY, JANUARY 22, 5:30 PM

<https://www.boston.gov/community-preservation#events>



Scan me with your
phone's camera!