



EXISTING REAR FACADE VIEW FROM ALLEY



EXISTING REAR FACADE VIEW FROM PARKING



EXISTING REAR ENTRY

9/26/2023 3:36:15 PM
 C:\Users\mism\Documents\A1\562 rooted in newbury st - RV02_christopherCDU25.rvt



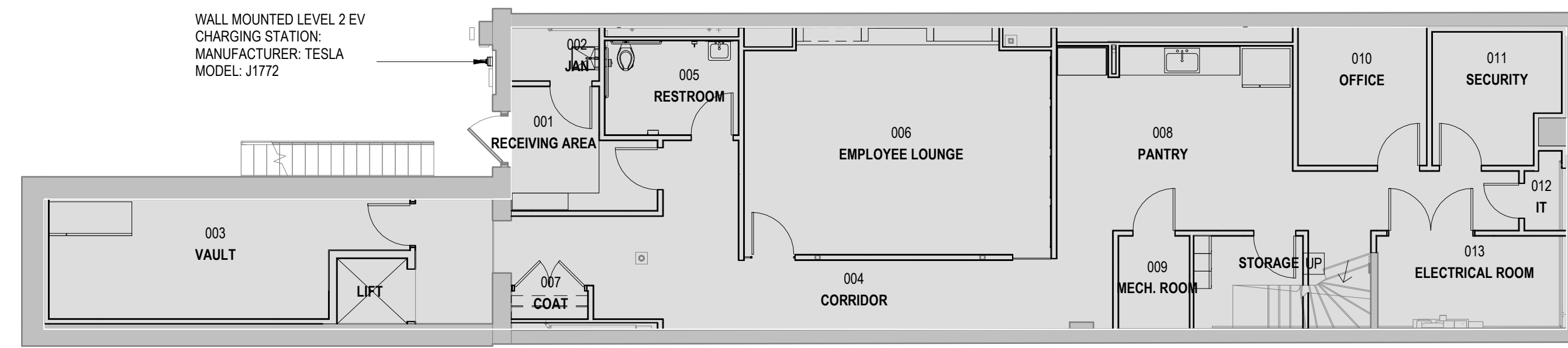
WALL MOUNTED LEVEL 2 EV CHARGING STATION
 MANUFACTURER: TESLA
 MODEL: J1772

Product Specifications

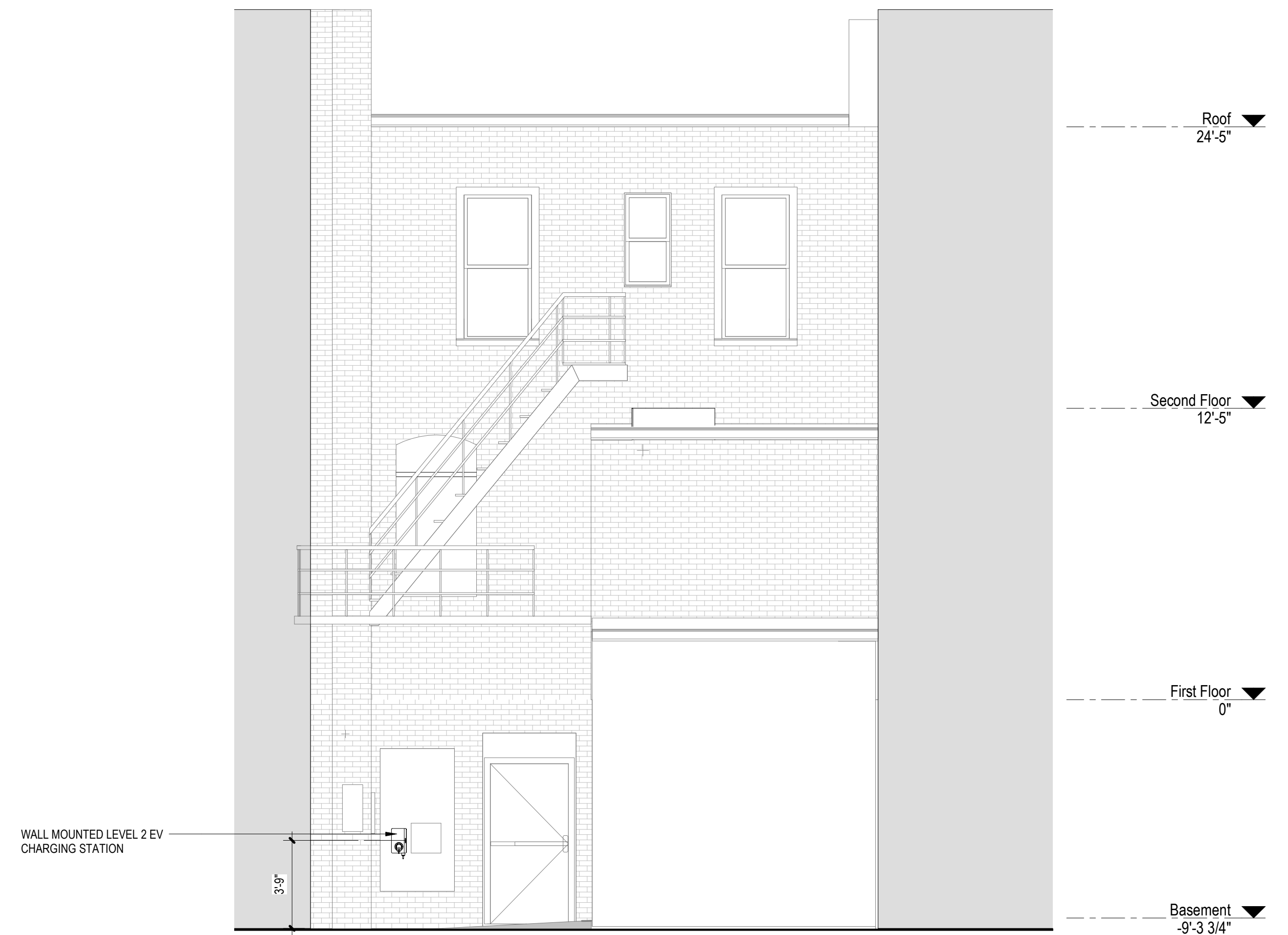
Voltage and Wiring	Nominal 200-240 V AC single-phase
Current Output Range	12 - 48 amps
Terminal Blocks	12-4 AWG (3.5 - 25 mm ²), copper only
Supported Conduit Sizing	¾ in (21 mm) default, 1 in (27 mm) optional
Grounding Scheme	TN/TT
Frequency	50/60 Hz
Cable Length	7.3 m (24 ft)
Wall Connector Dimensions	Height: 13.6 in (345 mm) Width: 6.1 in (155 mm) Depth: 4.3 in (110 mm)
Wire Box Bracket Dimensions	Height: 9.8 in (250 mm) Width: 4.7 in (120 mm) Depth: 2.0 in (50 mm)
Weight (including wirebox)	10 lb. (4.5 kg)
Operating Temperature	-22°F to 122°F (-30°C to 50°C)
Storage Temperature	-40°F to 185°F (-40°C to 85°C)
Enclosure Rating	Type 3R
Ventilation	Not required
Means of Disconnect	External branch circuit breaker
Ground Fault Circuit Interrupter	Integrated, no additional required (CCID20)
Wi-Fi	2.4 GHz, 802.11b/g/n
Agency Approvals	cULus - E351001



- 1. Faceplate
- 2. Light bar (vertical)
- 3. Main unit
- 4. Charge handle button
- 5. Charge handle



1 FLOOR PLAN - BASEMENT.
A3 1/8" = 1'-0"



2 EXISTING EXTERIOR ELEVATION
A3 1/4" = 1'-0"