

12 Fairfield St
Boston MA 02116
Corner of Fairfield and Marlborough Streets

Project: Installation of a cooktop exhaust hood and vent to outside.
Seeking approval of new vent cap, not to exceed
Location: EAST wall, overlooking property's courtyard.
Approximate size" 3.25" x 10"

Current kitchen includes an island-based gas cooktop with an aged and overly-loud ineffective telescoping down-draft exhaust fan. We are relocating the cooktop to the east wall, an exterior wall of the home, and installing an efficient and environmentally sound induction cooktop, and removing the gas cooktop from the island.

IMAGE for example purposes only – it would be something similar to this:

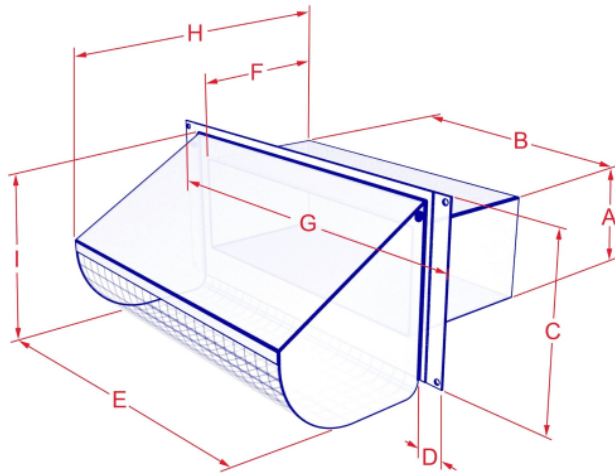
PRODUCT: COPPER RECTANGULAR WALL VENT CAP | (RC_)
MATERIALS: COPPER
SIZES: 3.25 X 10" | SCREEN ONLY, DAMPER ONLY, DAMPER & SCREEN

LM LUXURY ME

PRODUCT HIGHLIGHTS

THE RECTANGULAR WALL CAP IS IDEAL FOR USE AS KITCHEN FAN EXHAUST. HEAVY DUTY CONSTRUCTION WITH SPRING CLOSURE DAMPER AND WEATHER SEAL FOR INCREASED ENERGY EFFICIENCY AND NOISE REDUCTION.

- HOOD DESIGN PREVENTS WIND INDUCED RATTLING AND RAIN PENETRATION
- 16 OZ. COPPER
- DAMPER IS SPRING LOADED AND HAS A FOAM SEAL TO ENSURE MAXIMUM NOISE AND WEATHER PROTECTION
- ALL COPPER WALL CAPS ARE MANUFACTURED WITH COPPER SCREEN INSTALLED
- 1/4" COPPER SCREEN

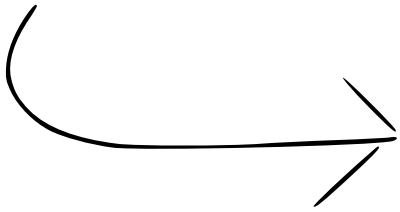




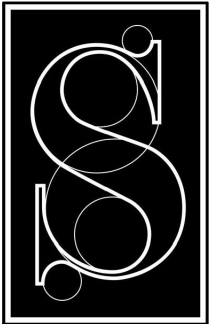
Proposed location of vent, between the two windows, approximately level with top of left(southern-most) window, indicated by white rectangle, to the north (right) of downspout, as close to downspout as possible.

Vent cap will not extend beyond depth of downspout.

Material could be copper.







SALVATORE ARCHITECTURE
 alberto@salvatorearchitecture.co
 617-840-7437

PROJECT:
 12 FAIRFIELD STREET
 BOSTON MA 02116

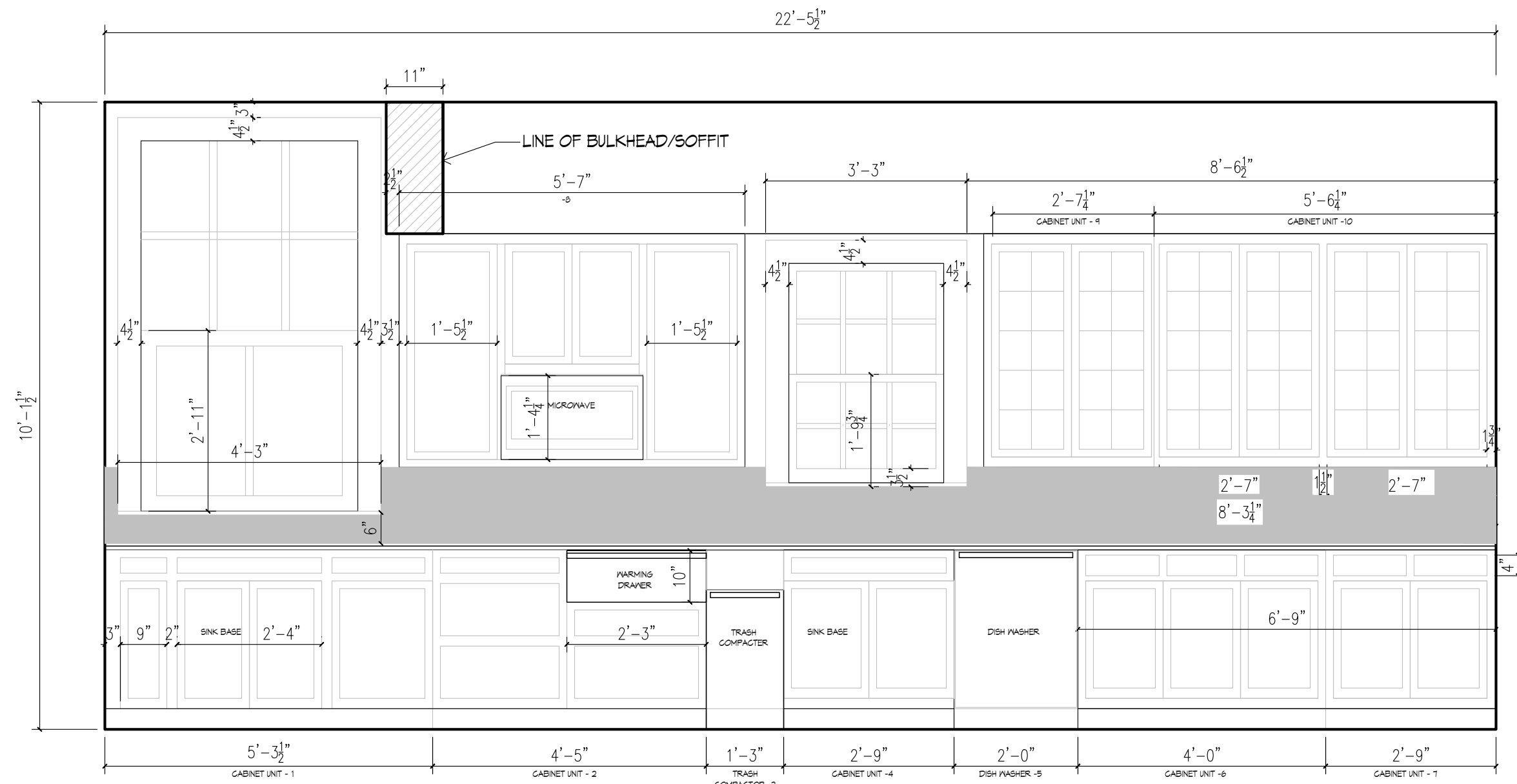
ISSUED FOR		
No.	DESCRIPTION	DATE

REVISIONS		
No.	DESCRIPTION	DATE

DRAWING TITLE:
EXISTING EAST ELEVATION

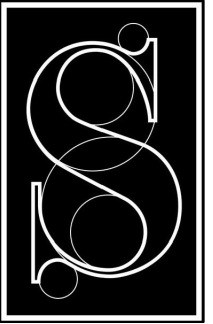
DESIGN BY: AS	SCALE: AS NOTED
CHK. BY:	DATE: 09.28.23
DRWN. BY: RAA	PROJ. #: 23-001

A
1.5



1 **EXISTING EAST ELEVATION**
 A 1.5 SCALE: 1/2" = 1'-0"

NOTE
 NUMBERS AT EACH CABINET/APPLIANCE UNIT FOR REFERENCE IN RE-USE
 EXISTING CABINETS OPTION - SEE SHEETS



SALVATORE ARCHITECTURE
 alberto@salvatorearchitecture.co
 617-840-7437

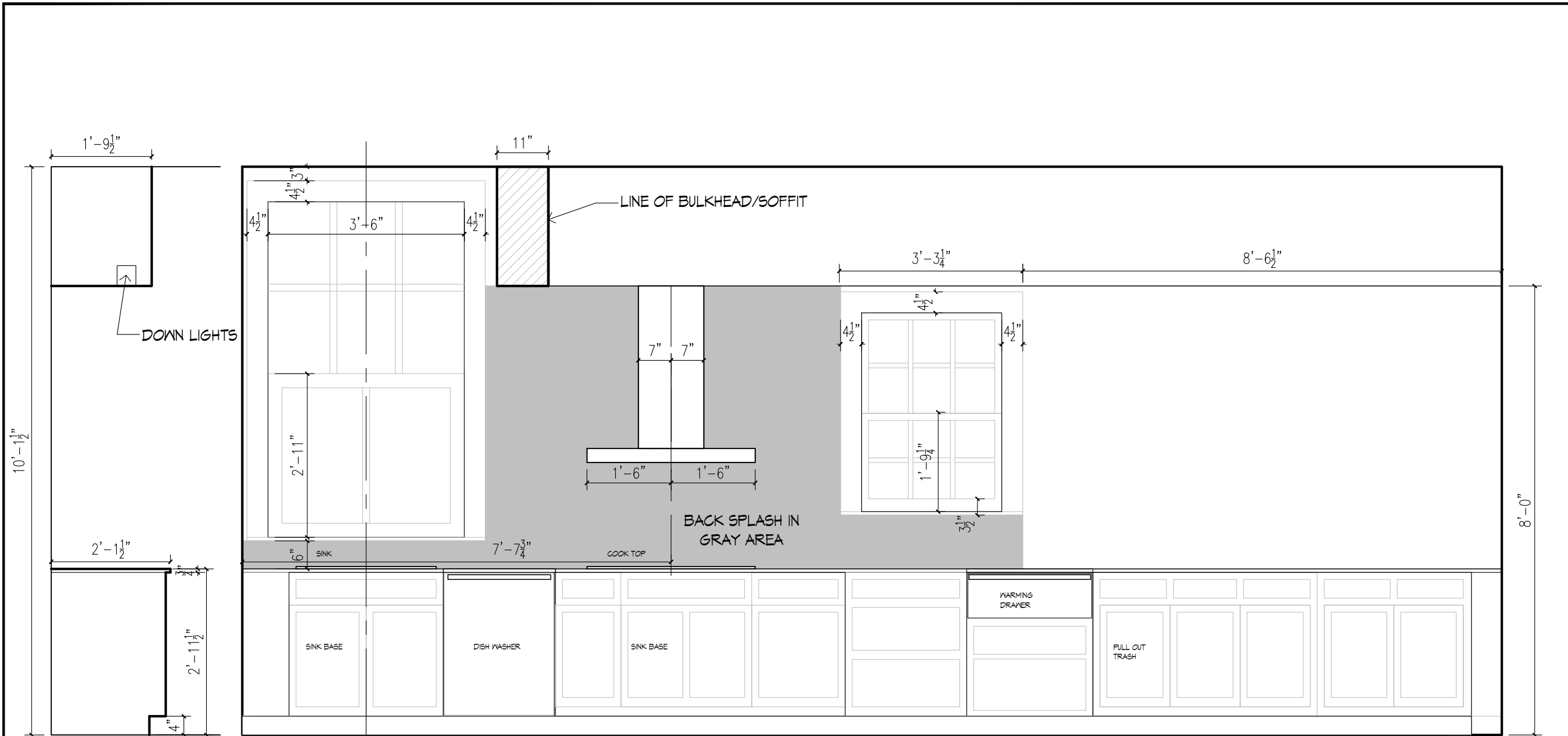
PROJECT:
 12 FAIRFIELD STREET
 BOSTON MA 02116

ISSUED FOR		
No.	DESCRIPTION	DATE

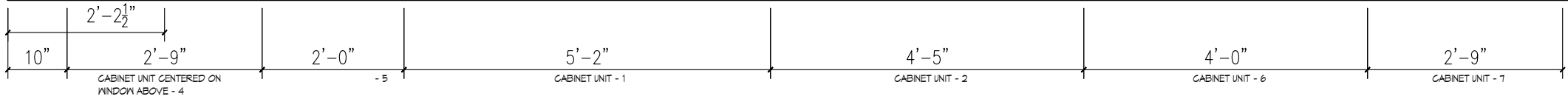
REVISIONS		
No.	DESCRIPTION	DATE

DRAWING TITLE:
PROPOSED PANTRY ELEVATIONS - OPTION 2

DSGN. BY: AS	SCALE: AS NOTED
CHK. BY:	DATE: 09.28.23
DRWN. BY: RAA	PROJ.#: 23-001



PROPOSED SECTION AT EAST ELEVATION 1/2"=1'-0"



OPTION 2
PROPOSED EAST ELEVATION NEW CABINETS
 1
 A 1.13 SCALE: 3/8" = 1'-0"

NOTE
 RE-USE OF EXISTING CABINETS - NUMBERS AT EACH UNIT IDENTIFY EACH CABINET/APPLIANCE UNIT FOR REFERENCE SEE SHEET A1.5 EXISTING CABINETS ARE RELOCATED AND MINIMALLY MODIFIED WHEN REQUIRED FOR THEIR NEW LOCATION. (APPLIANCE #3 TRASH COMPACTOR HAS BEEN ELIMINATED)

A
1.13