

# Improvements To Watson Park I & II

Neighborhood Meeting #2 | 12 October 2023



CopleyWolff





The Boston Parks and Recreation Department will be recording the meeting and posting to our project webpage for those who are unable to attend the zoom meeting live.

It is possible that participants may also be recording the meeting with their phones, cameras, or other devices. If you do not wish to be recorded during this meeting, please keep your microphone and camera off.

# Introduction | Zoom Tips

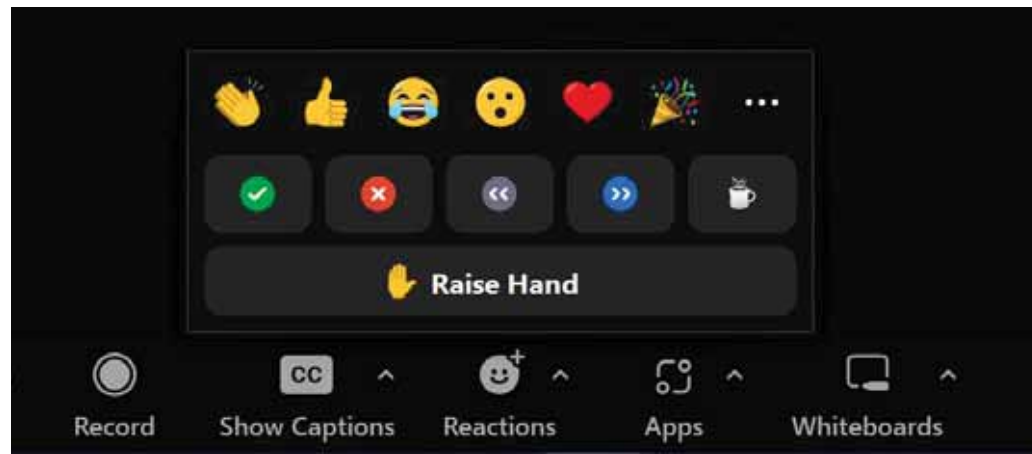
Here is how you can participate during the community feedback part of the presentation.

## During the Presentation



### VIA WEB:

Turn video on / off.



To use these non-verbal feedback options, click on Reactions (bottom of screen); these options will pop up above the button.

## During the Discussion



### JOINING VIA PHONE?

Use \*9 to raise hand to ask for audio/video permission to ask questions or provide comments.



### VIA WEB:

Chat to ask question/comments or to provide responses to poll questions.



Raise hand to ask for audio/video permission to ask questions or provide comments.

- 1 INTRODUCTION
- 2 PROJECT OVERVIEW
- 3 PRESENTATION  
Summary of Previous Meeting  
Concept Designs
- 4 COMMUNITY FEEDBACK  
Listening + Discussion
- 5 CLOSING REMARKS + NEXT STEPS



## **B CHATFIELD**

Project Manager

abigail.chatfield@boston.gov, 617-504-7709

## **JAMES HEROUX**

Principal

Copley Wolff Design Group

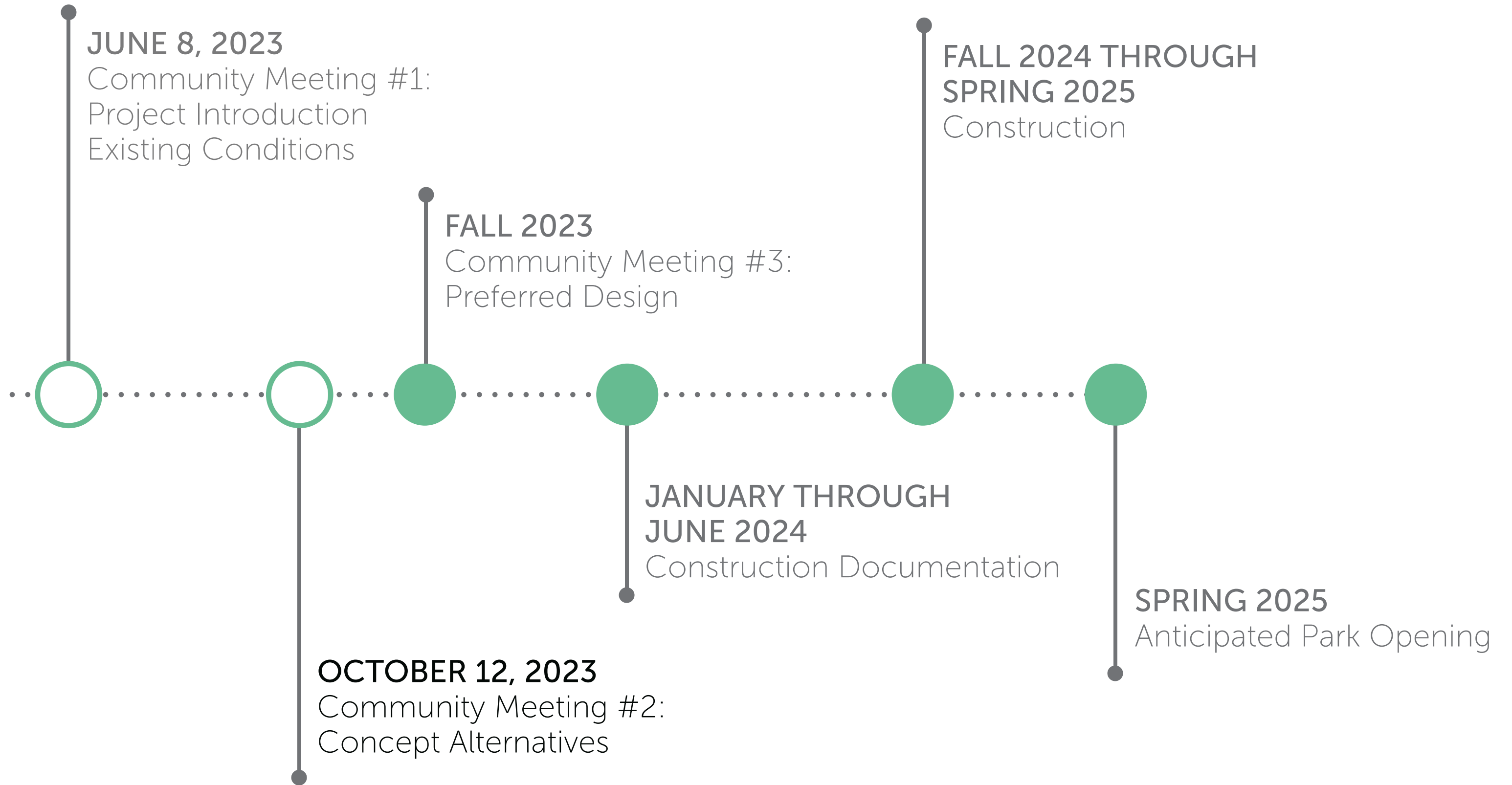
## **MICHAEL MacNULTY**

Landscape Designer

Copley Wolff Design Group



# Project Overview | Schedule







## City of Boston Priorities

- 1 EXPANDING WALKABLE ACCESS TO PARK.
- 2 ADDRESSING EQUITY.
- 3 CLIMATE RESILIENCE.
- 4 HEALTH.
- 5 COMMUNITY BUILDING.

## Parks & Recreation Goals

- 1 ACCESSIBLE AND AVAILABLE TO ALL.
- 2 DIVERSE, BALANCED, AND EFFICIENT MIX OF USES.
- 3 MEANINGFUL AND INCLUSIVE COMMUNITY ENGAGEMENT.
- 4 ADAPTIVE AND RESILIENT LANDSCAPES.
- 5 PROMOTE CONNECTIONS.

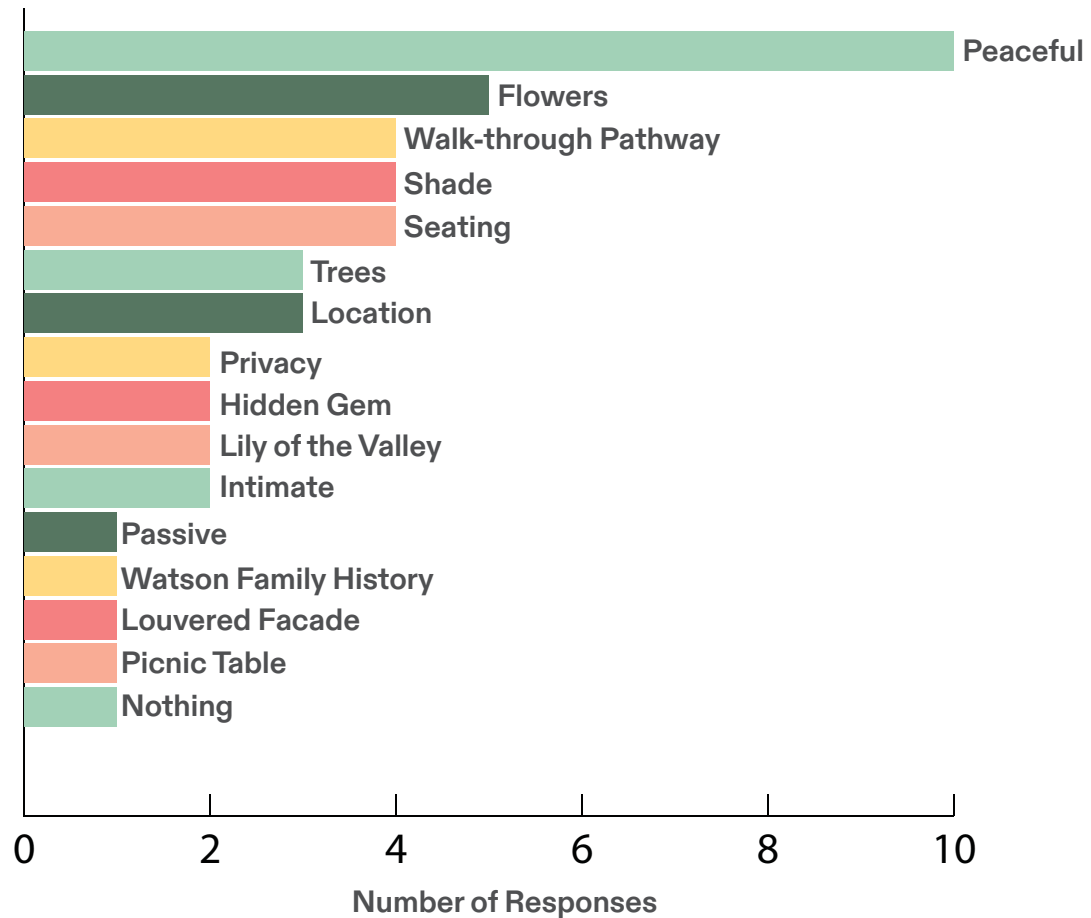




# Project Overview | Community Survey #1 Results

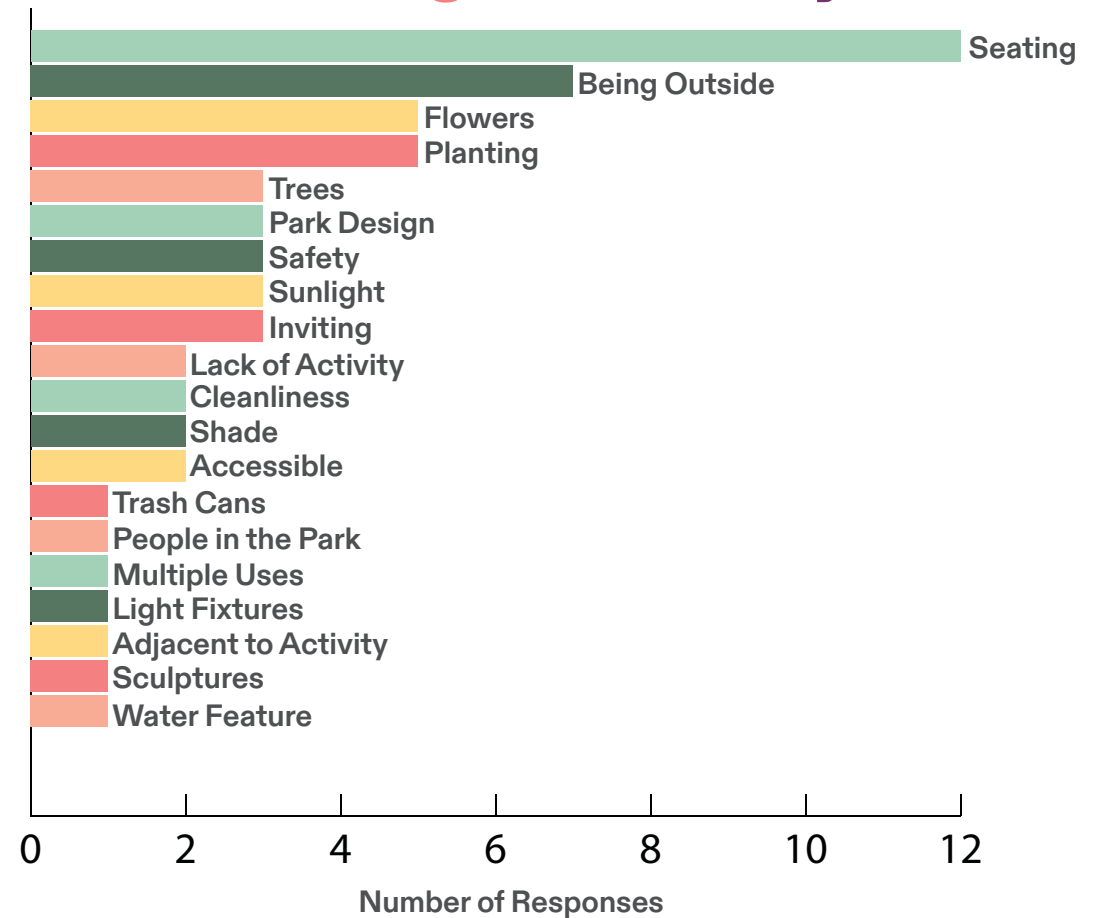
Q1

WHAT IS YOUR FAVORITE PART OF WATSON PARK TODAY?



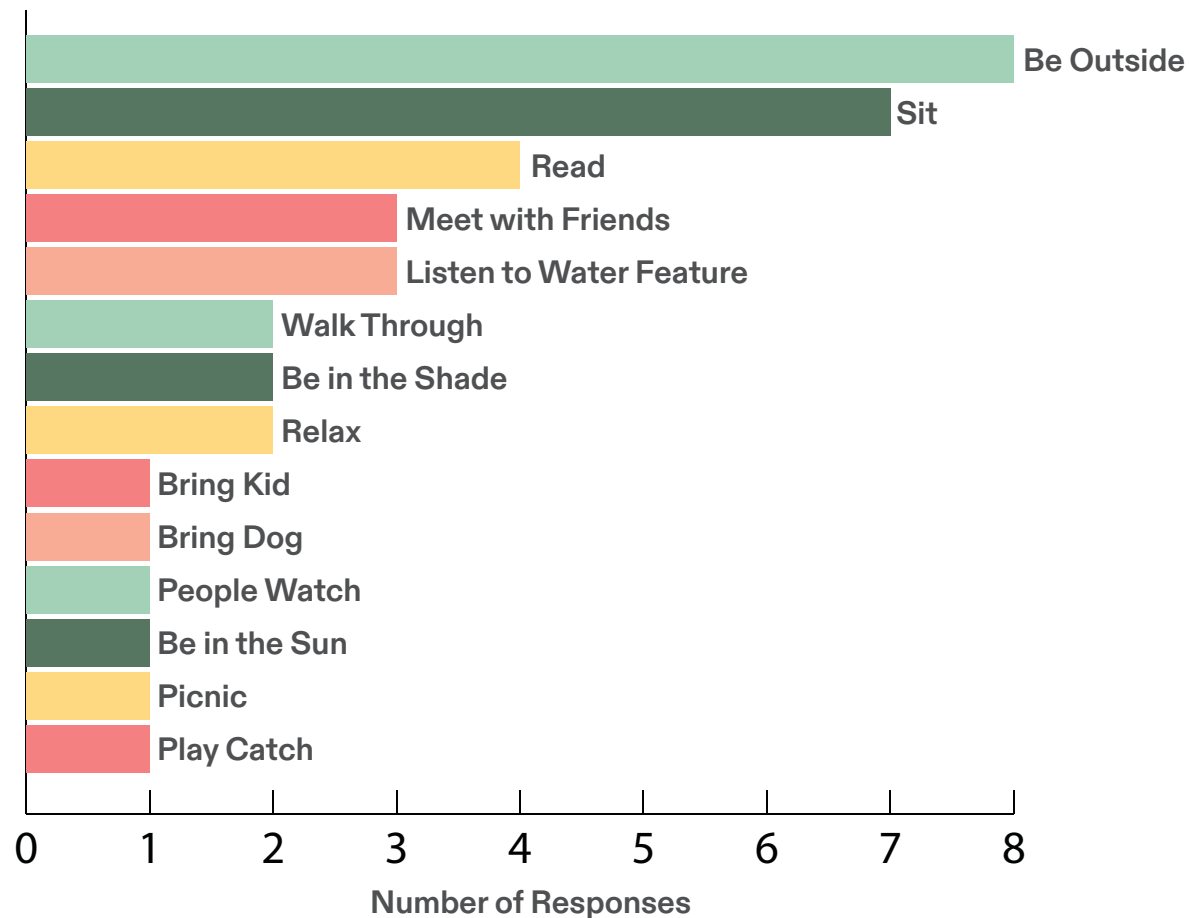
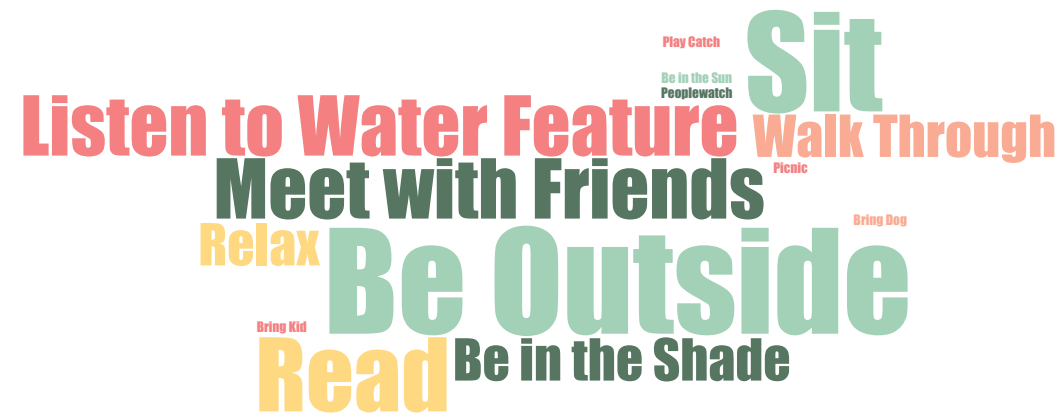
Q2

WHAT ASPECTS OF PASSIVE PARKS DRAW YOU TO USE THEM?



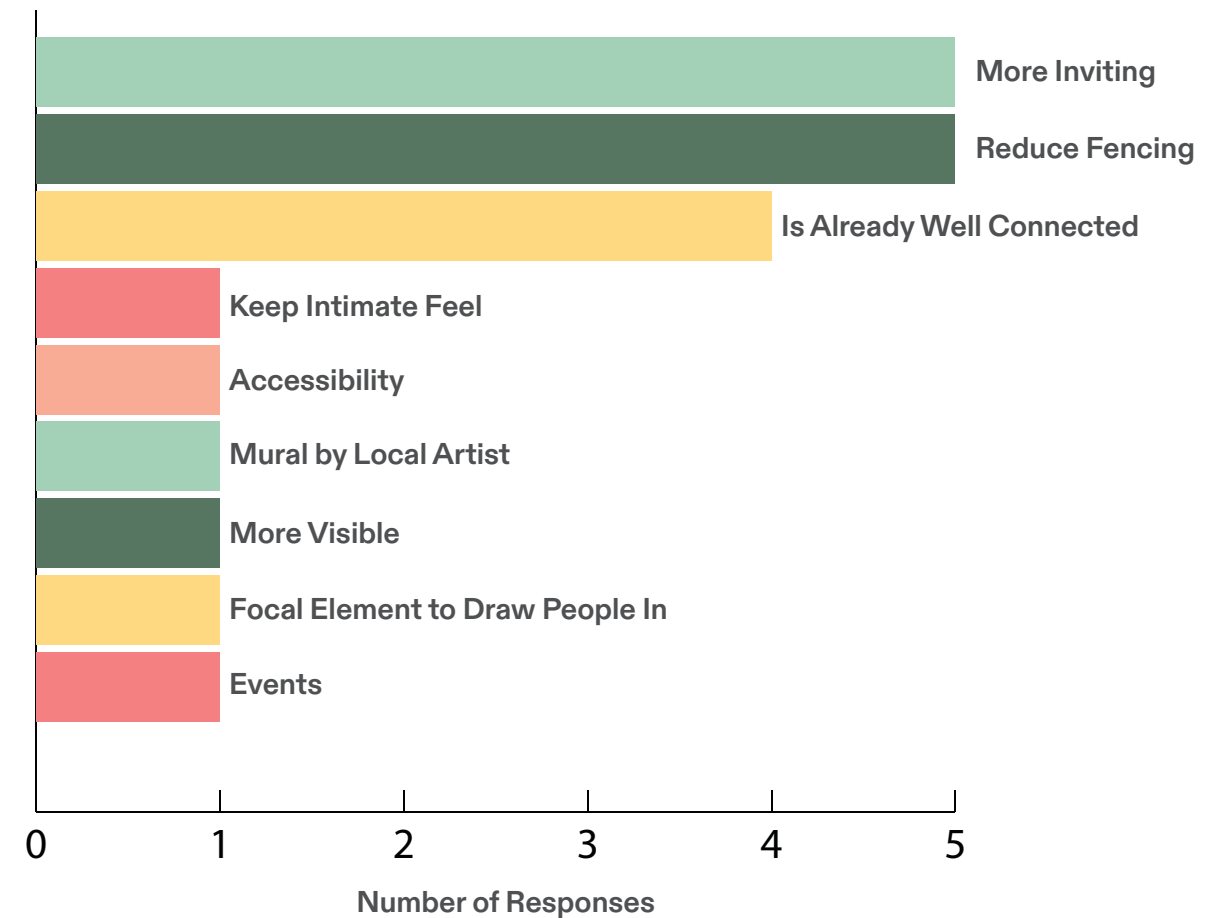
Q3

WHAT WOULD YOU LIKE TO DO IN THE NEWLY RENOVATED WATSON PARK?



Q4

HOW CAN BOTH PARKS BE MORE CONNECTED TO SOUTH END?

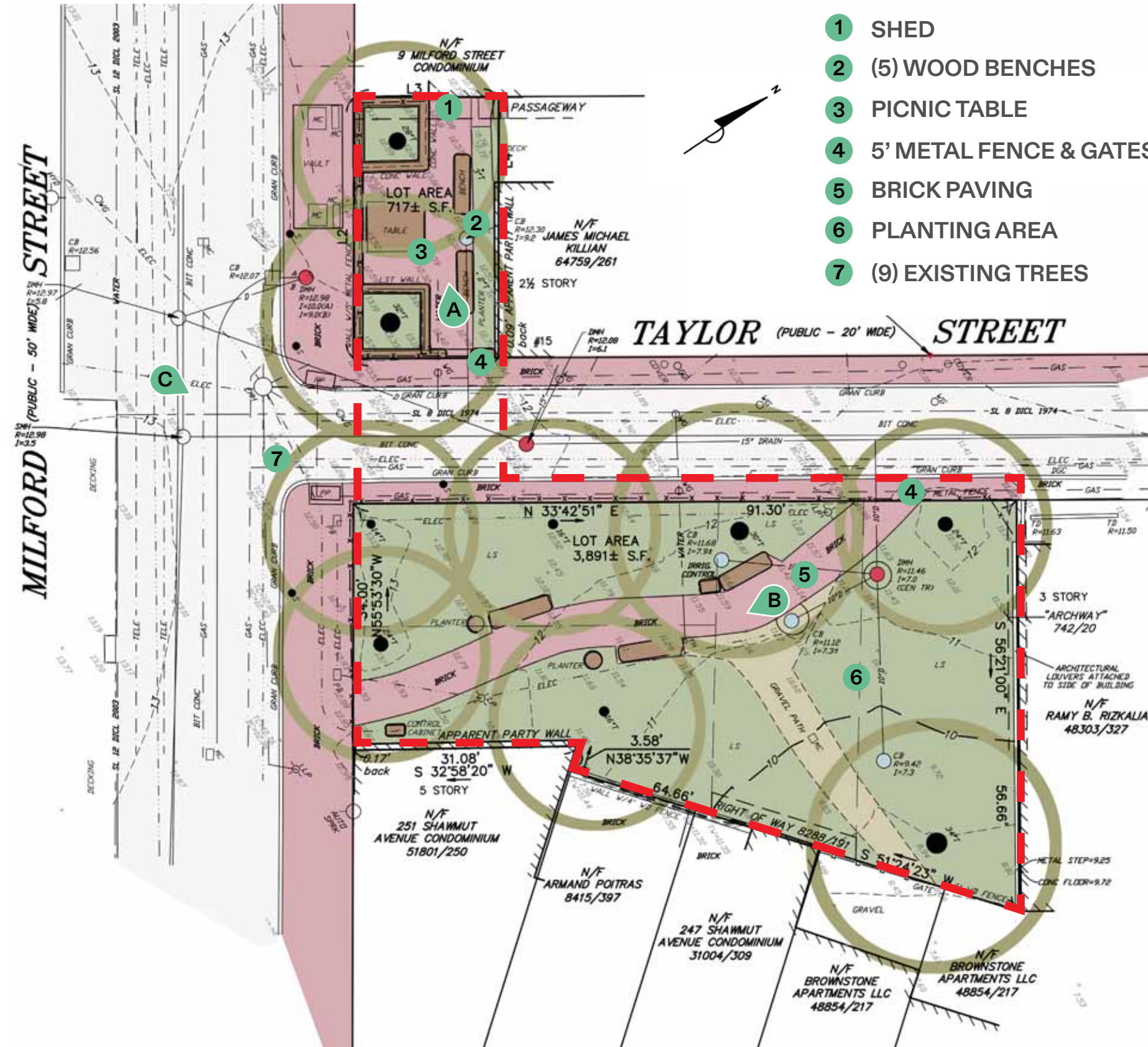








# Project Overview | Existing Site Plan & Inventory





# Site Context | Existing Site Conditions



EXISTING PATHWAY LIMITS COMMUNITY GATHERING AND HAS AN INACCESSIBLE CROSS PITCH.



TALL PERIMETER FENCING IS NOT INVITING AND EXCLUDES TAYLOR ST. FROM THE PARK EXPERIENCE.



SLOPED GRADE ACROSS WATSON PARK CHANNELS STORM WATER INTO THE ADJACENT PROPERTY.



PARK GATE LOCATIONS PREVENT OPPORTUNITIES TO CONNECT BOTH PARKS.



EXISTING TREES LIMIT THE SUN'S ACCESS TO THE PARK AND RESTRICTS ITS PLANT PALETTE.



LITTLE WATSON PARK IS INACCESSIBLE DUE TO THE NARROW GATE AND A STEP DOWN WHEN ENTERING.

## WATSON PARK

12 OCTOBER 2023



CopleyWolff



## Watson Park Goals

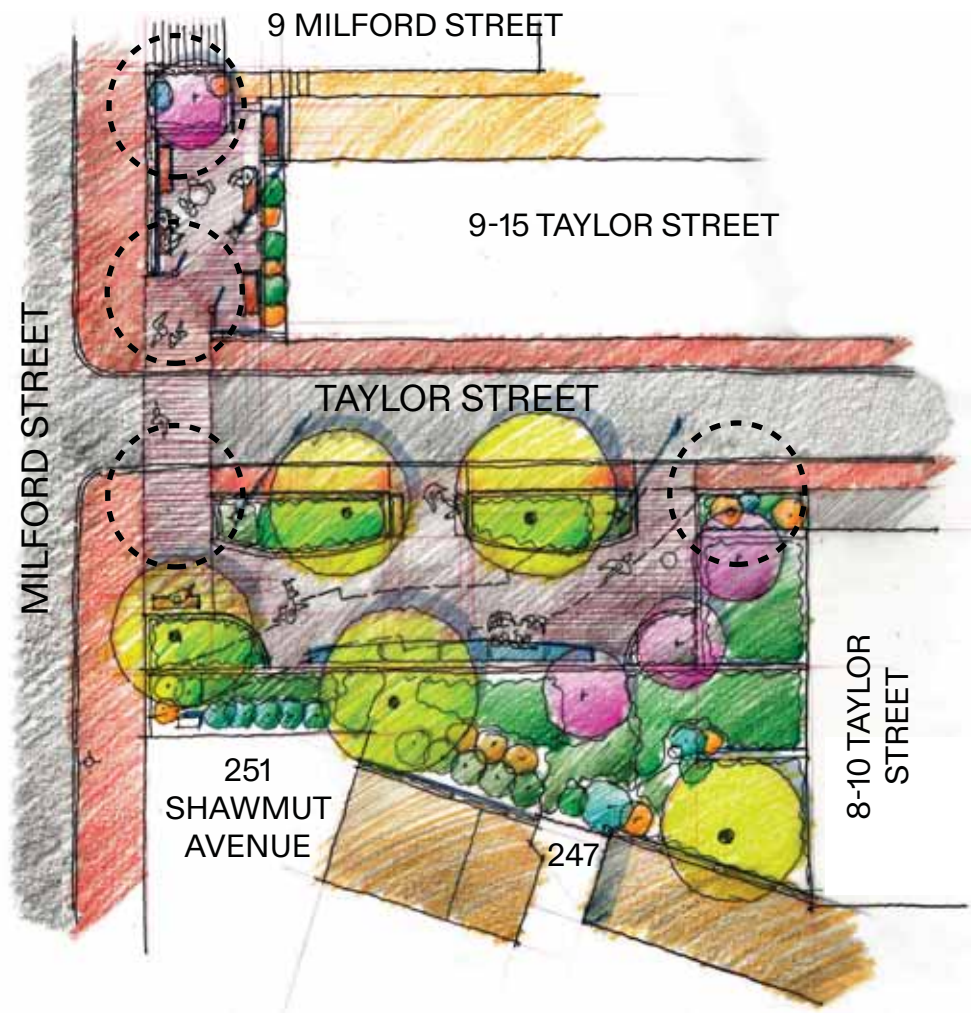
---

- 1 PROVIDE TOTAL ADA ACCESSIBILITY IN BOTH PARKS THROUGH NEW GRADES & PAVING MATERIALS.
- 2 CONNECT BOTH PARKS VISUALLY AND THROUGH PARK DETAILS.
- 3 PROVIDE THE COMMUNITY A PLACE TO GATHER TOGETHER.
- 4 PROVIDE BOTH PARKS A PLANT PALETTE THAT IS SUCCESSFUL & MAINTAINABLE.
- 5 DESIGN A PARK FOR COMMUNITY.



## CONCEPT A

### EMBRACING TAYLOR STREET

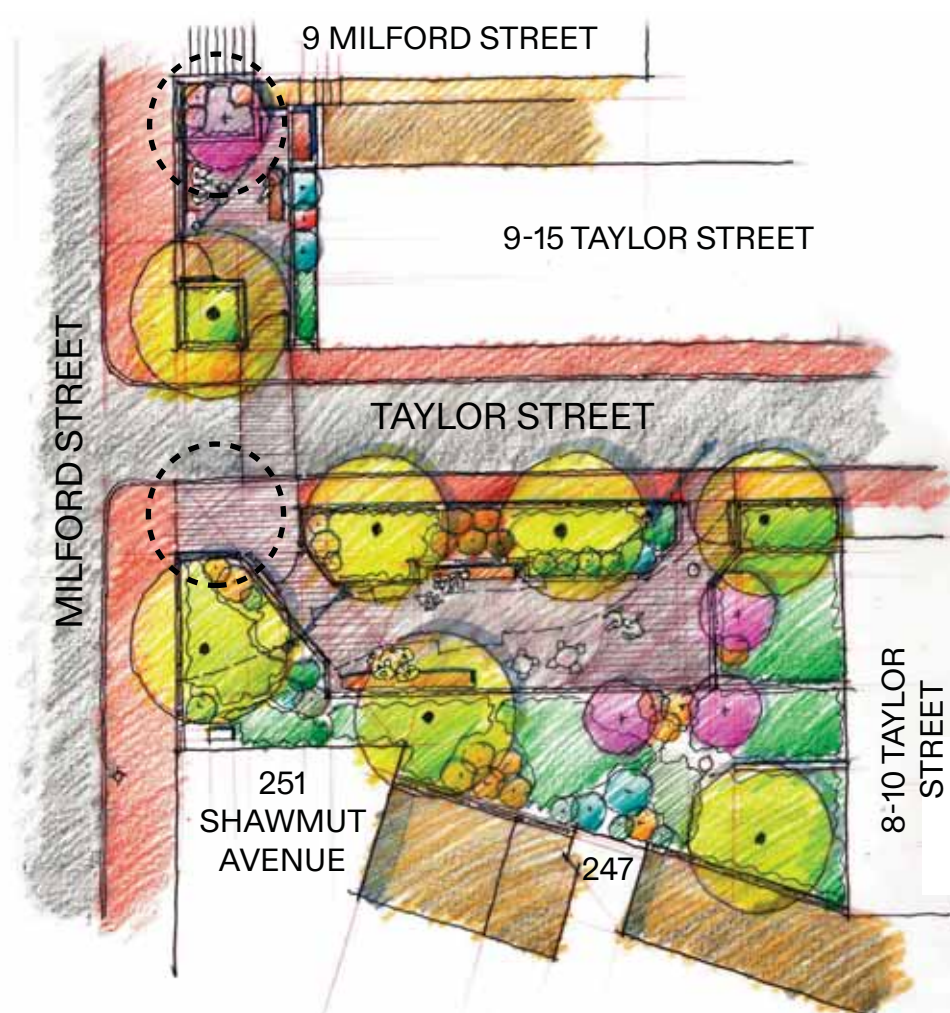


#### IMPORTANT FEATURES

- SCULPTURAL GRANITE SEATING
- KNITS TOGETHER WATSON & LITTLE WATSON
- (4) TREES REMOVED FOR MORE LIGHT IN BOTH PARKS
- LARGEST AREA OF GATHERING
- LARGE AREA OF PLANTING
- PROVIDES CONTINUITY

## CONCEPT B

### CONNECTED FENCED PARKS

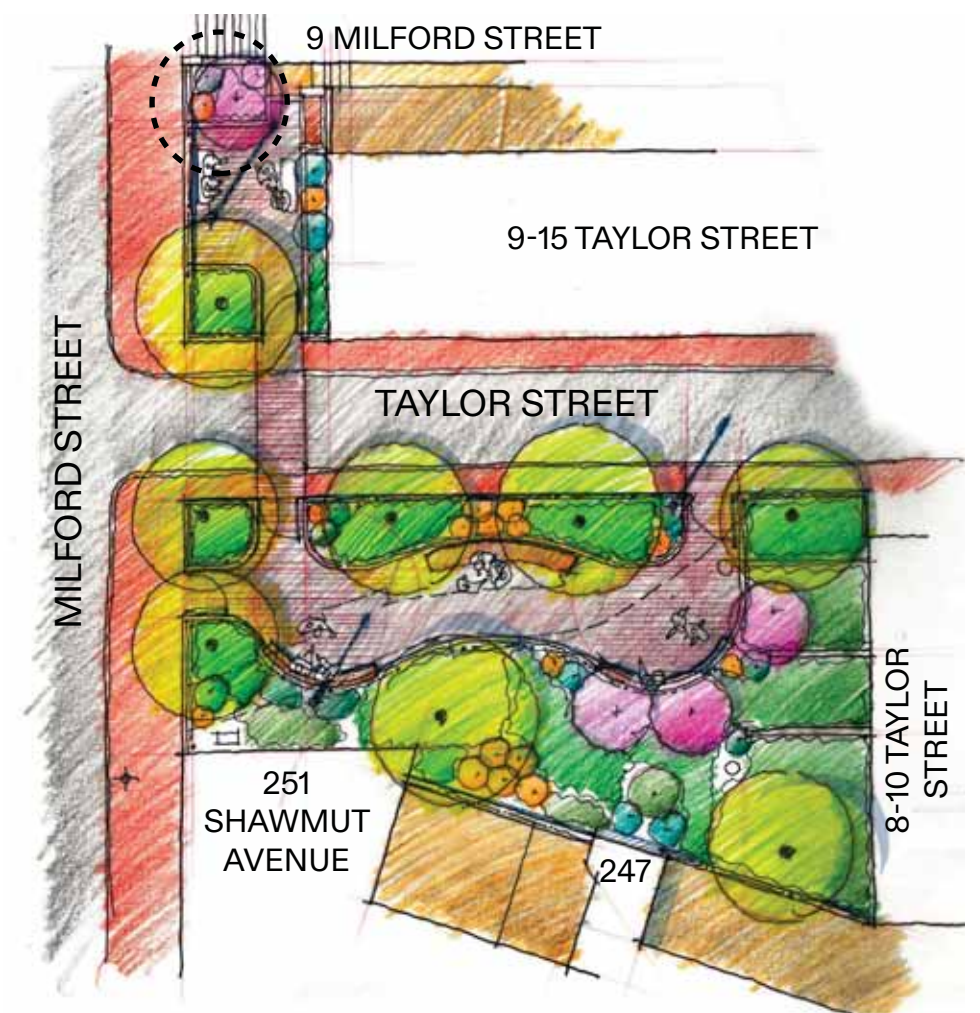


#### IMPORTANT FEATURES

- INVITING CORNER ENTRANCE
- SEATING INTEGRATED INTO PLANTING BEDS
- (2) ACCESSIBLE GATED ENTRIES TO LITTLE WATSON
- (2) TREES REMOVED FOR MORE LIGHT IN BOTH PARKS
- LARGE AREA OF GATHERING
- LARGER AREA OF PLANTING
- PROVIDES CONTINUITY

## CONCEPT C

### ORGANIC PARK



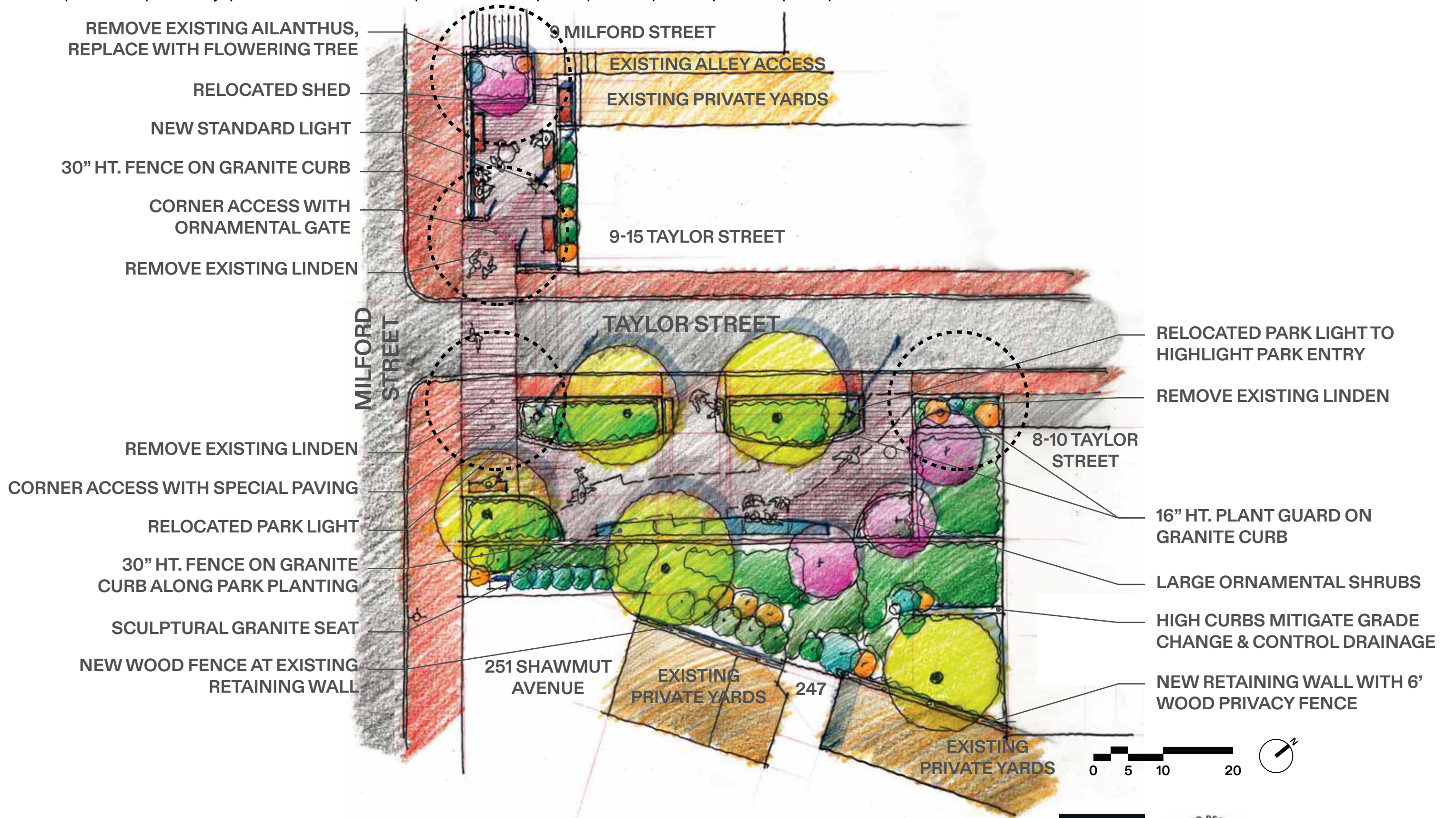
#### IMPORTANT FEATURES

- (2) MAIN GATED ENTRYWAYS
- (1) TREE REMOVED FOR STRUCTURAL REASONS
- MULTIPLE GATHERING AREAS
- LARGEST AREA OF PLANTING
- PROVIDES CONTINUITY



# Concept A | Embracing Taylor Street

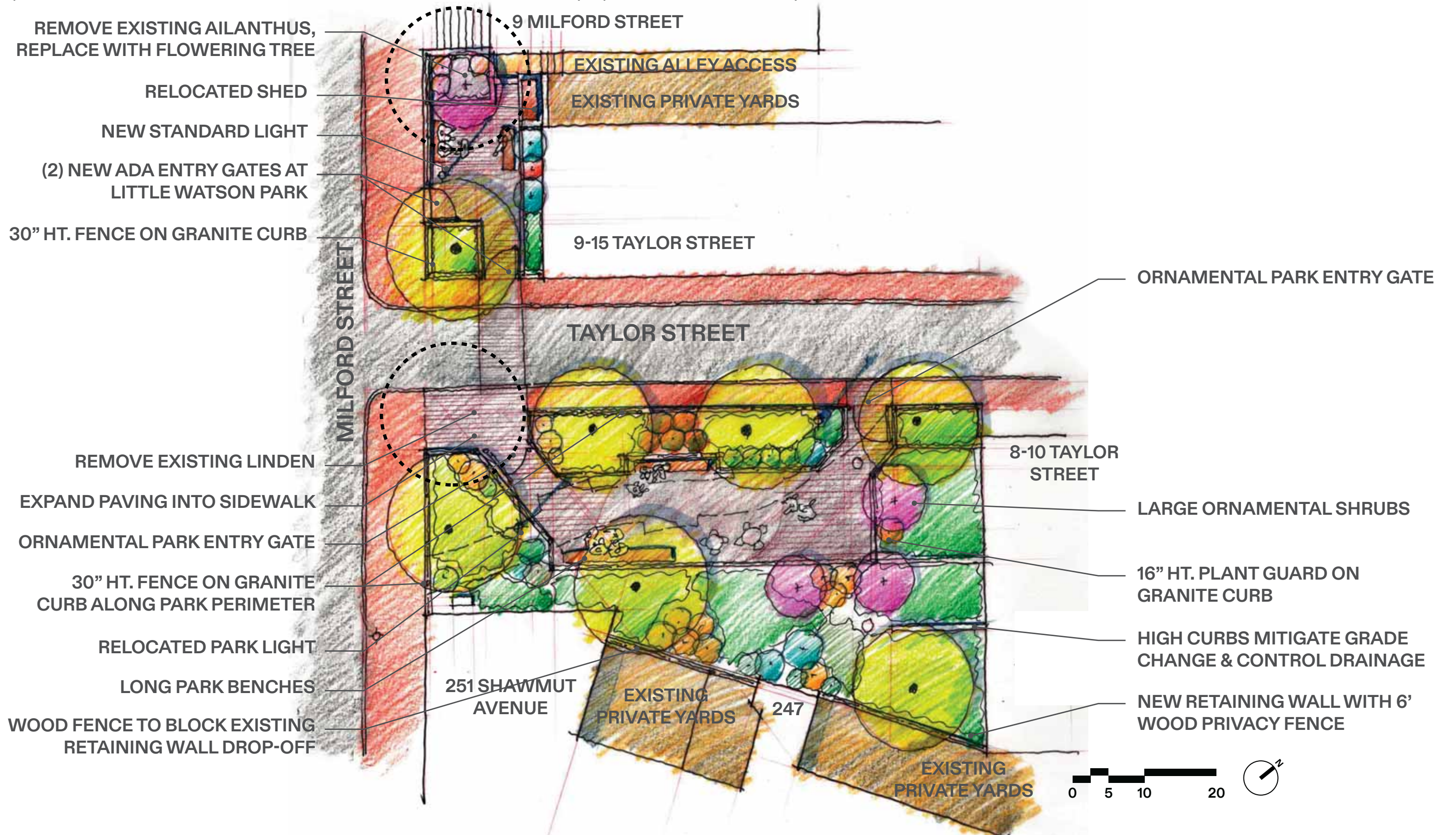
A peaceful spot to enjoy the outdoors which capitalizes on the park's proximity to the picturesque Taylor Street.





# Concept B | Connected Fenced Parks

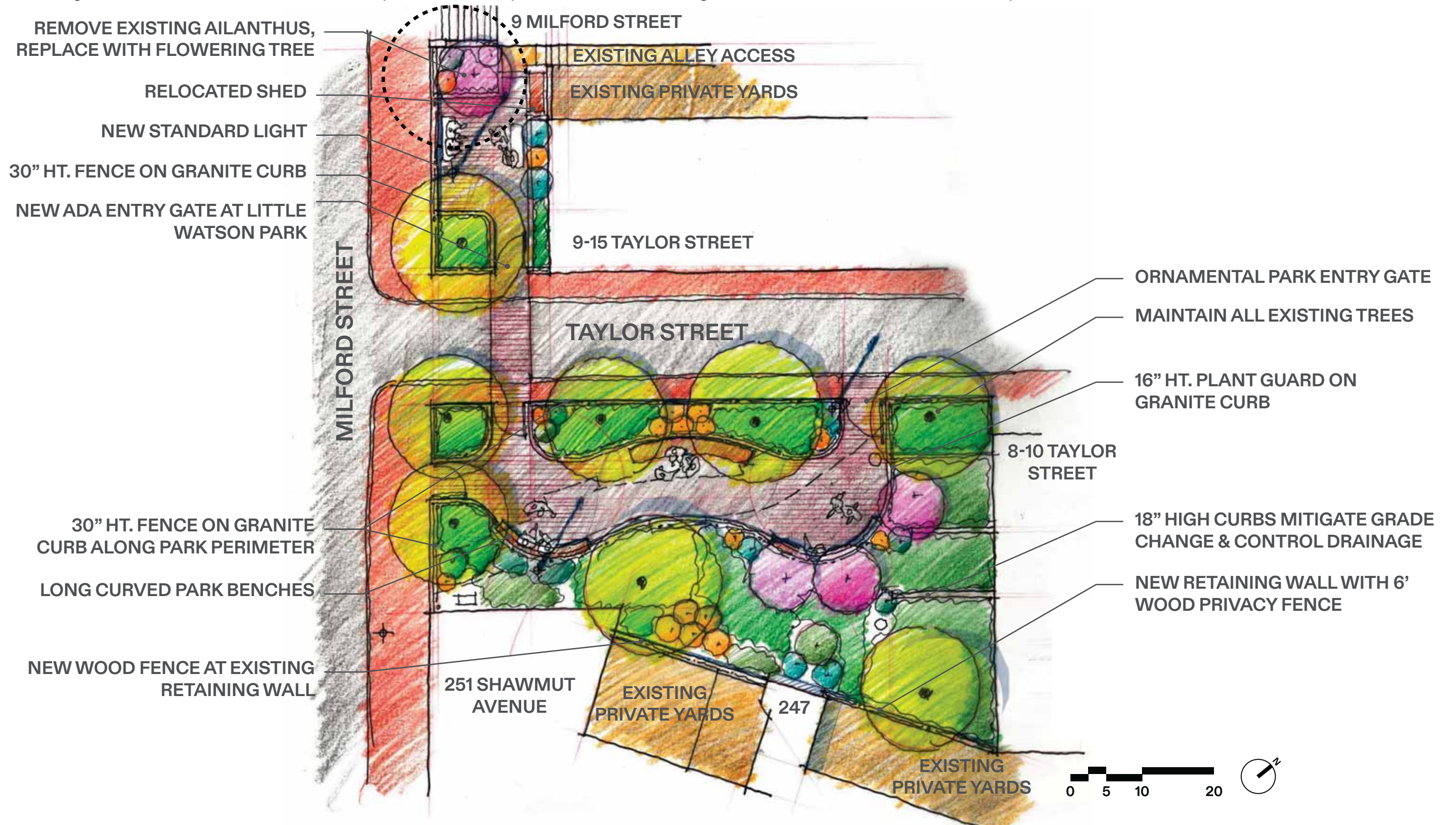
A place to sit in the sun or shade that's connected to Shawmut Avenue by a plaza at the corner of Taylor and Milford.





# Concept C | Organic Park

A hidden gem full of mature trees to discover as you turn onto Taylor Street, with artistic gate elements to draw visitors into the park.





# Concept Imagery | Fencing and Plant Guard Options



CHAIN AND POST RAILING



30" TALL, OPEN PICKET METAL FENCE



CURB AND PLANT GUARD COMBO



WIRE MESH PLANT GUARD



METAL PLANT GUARD



TIED WIRE PLANT GUARD



# Concept Imagery | Park Entry Experiences



PARK EMBRACING PEDESTRIAN SCALED STREET



FENCED PARK WITH OPTIONAL GATE



ORNAMENTAL GATE



UNIFIED PARK AND PEDESTRIAN STREET



CORNER ACCESS WITH OPTIONAL GATE



ORNAMENTAL GATE

**WATSON PARK**

12 OCTOBER 2023



**CopleyWolff**



# Concept Imagery | Site Furnishings



STONE SEAT WALL OPTION



FUNCTIONAL STORAGE SHED



LONG BENCHES



SCULPTURAL GRANITE SEAT WALL OPTION



STANDARD LIGHT FIXTURE



MOVABLE FURNITURE



STANDARD BENCHES

**WATSON PARK**

12 OCTOBER 2023



**CopleyWolff**





DOGWOOD



REDBUD



TREE HYDRANGEA





**WATSON PARK**

12 OCTOBER 2023



**CopleyWolff**



WHAT LEVEL OF ENCLOSURE WOULD YOU LIKE TO SEE WITHIN THE PARKS?

HOW INTEGRATED WITH TAYLOR STREET SHOULD BOTH PARKS BE?

WHICH STYLE OF PARK ENTRY DO YOU PREFER?

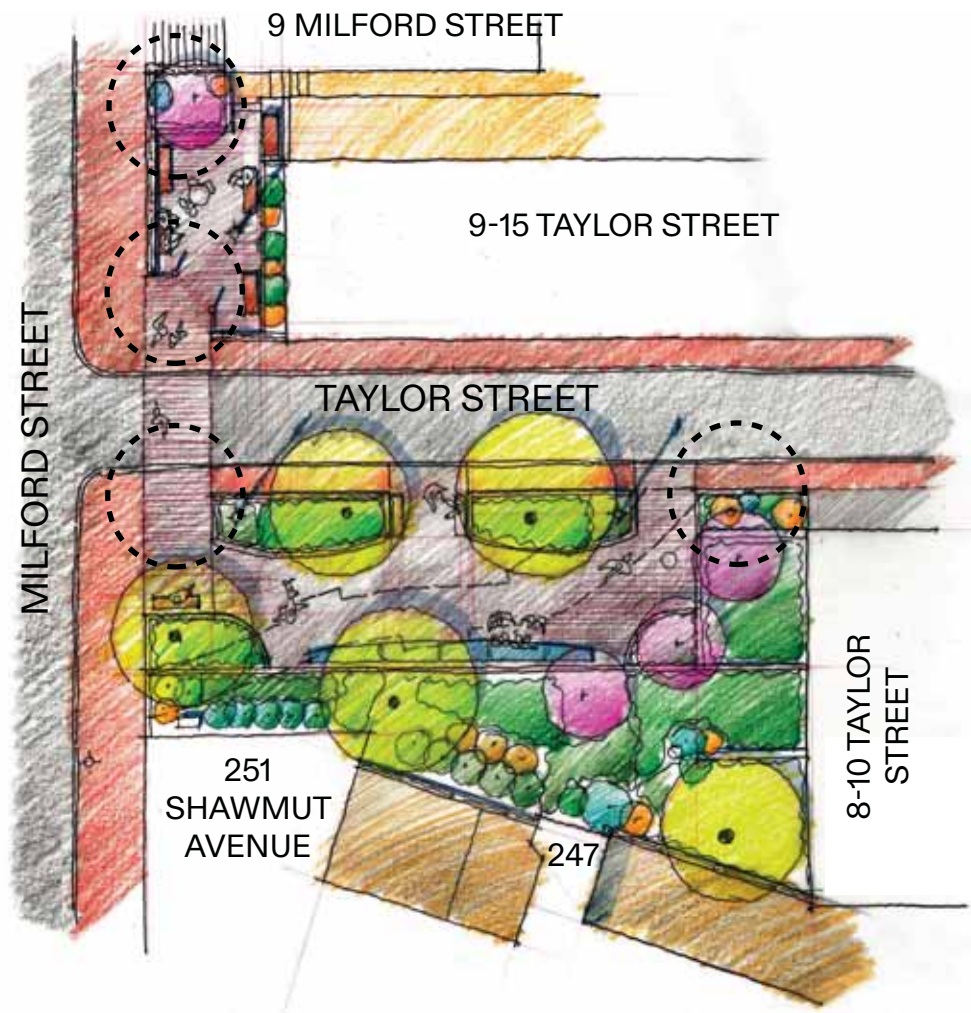
HOW IMPORTANT IS ADDING GATES TO AREAS WITH LOWERED FENCING?

HOW CONNECTED SHOULD WATSON PARK AND LITTLE WATSON PARK BE?



## CONCEPT A

### EMBRACING TAYLOR STREET

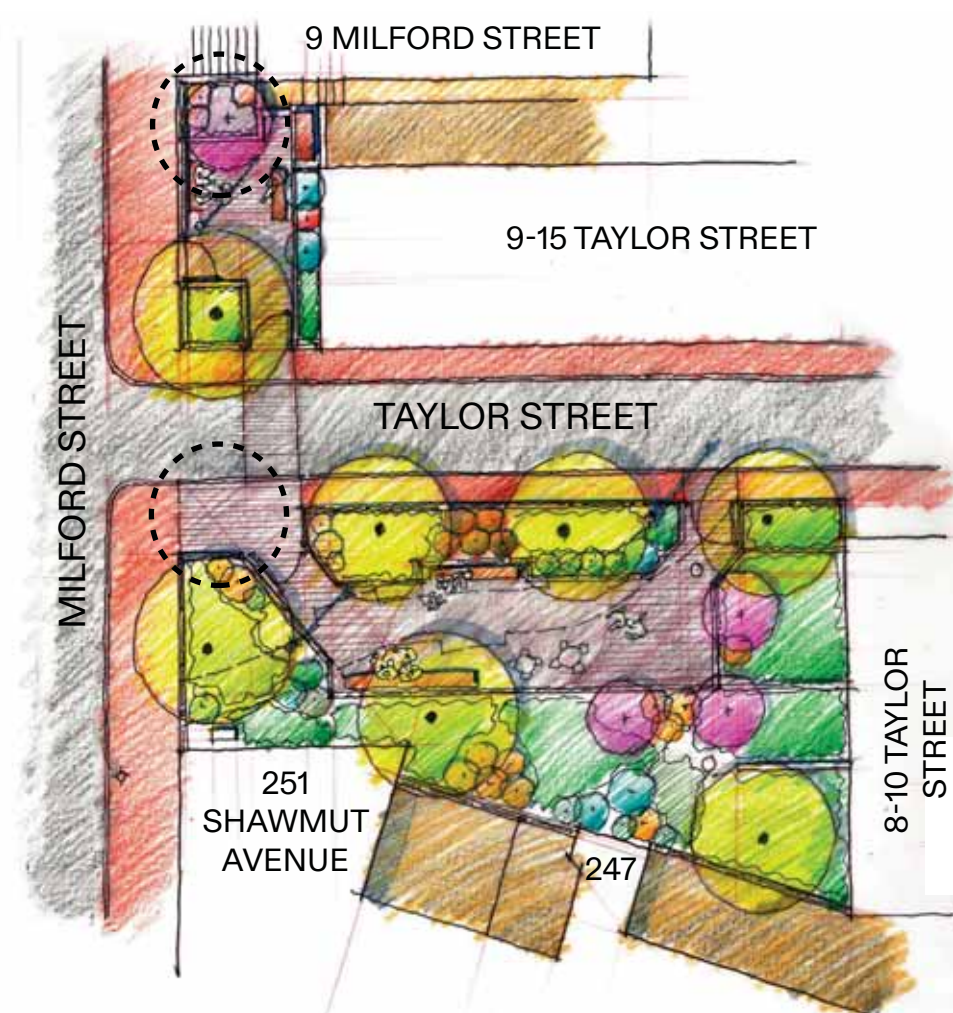


#### IMPORTANT FEATURES

- SCULPTURAL GRANITE SEATING
- KNITS TOGETHER WATSON & LITTLE WATSON
- (4) TREES REMOVED FOR MORE LIGHT IN BOTH PARKS
- LARGEST AREA OF GATHERING
- LARGE AREA OF PLANTING
- PROVIDES CONTINUITY

## CONCEPT B

### CONNECTED FENCED PARKS

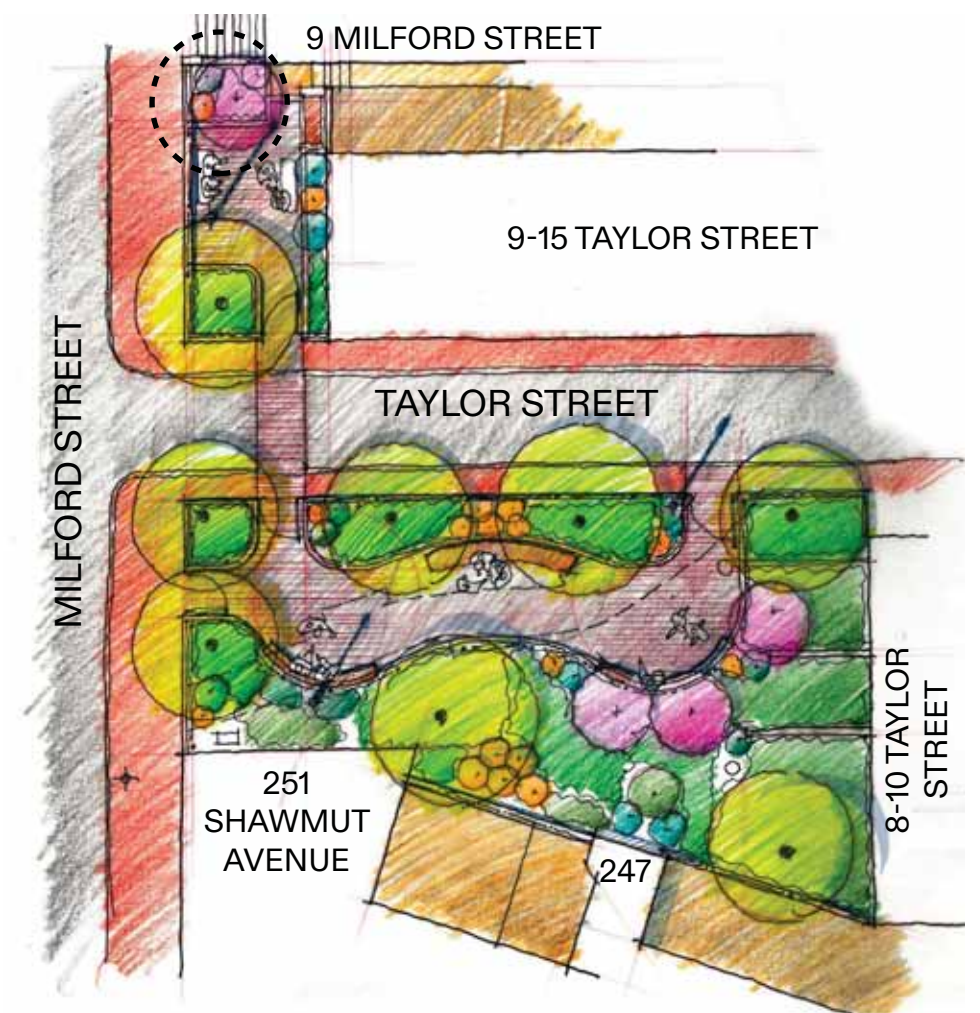


#### IMPORTANT FEATURES

- INVITING CORNER ENTRANCE
- SEATING INTEGRATED INTO PLANTING BEDS
- (2) ACCESSIBLE GATED ENTRIES TO LITTLE WATSON
- (2) TREES REMOVED FOR MORE LIGHT IN BOTH PARKS
- LARGE AREA OF GATHERING
- LARGER AREA OF PLANTING
- PROVIDES CONTINUITY

## CONCEPT C

### ORGANIC PARK

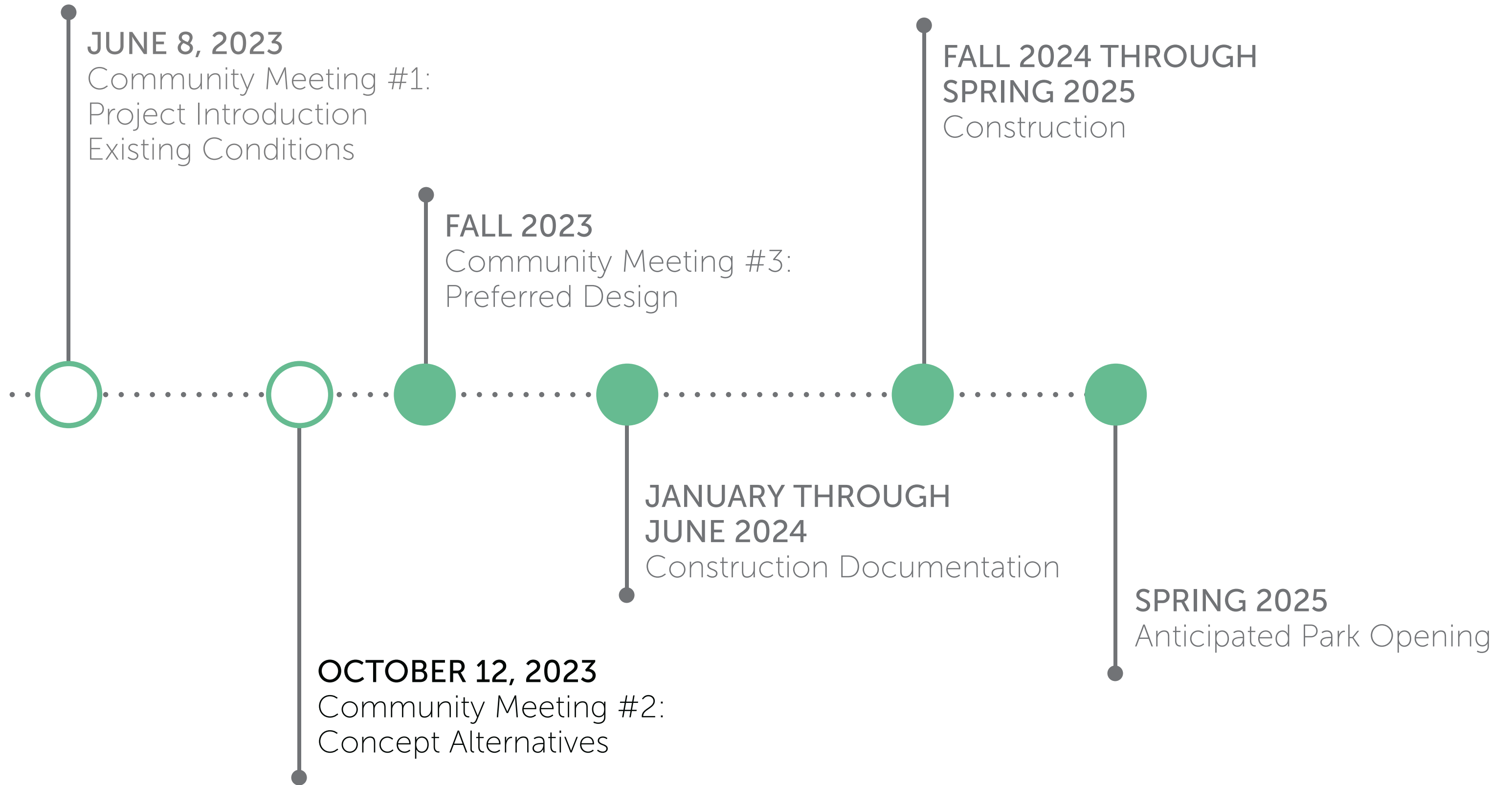


#### IMPORTANT FEATURES

- (2) MAIN GATED ENTRYWAYS
- (1) TREE REMOVED FOR STRUCTURAL REASONS
- MULTIPLE GATHERING AREAS
- LARGEST AREA OF PLANTING
- PROVIDES CONTINUITY



# Project Overview | Schedule





## THANK YOU FOR JOINING!

PLEASE VISIT THE WEBSITE:

[https://www.boston.gov/departments/parks-and-recreation/  
improvements-watson-park-i-and-ii](https://www.boston.gov/departments/parks-and-recreation/improvements-watson-park-i-and-ii)



Scan me with your  
phone's camera!

SHARE YOUR THOUGHTS:

<https://www.surveymonkey.com/r/G6Y2JWD>



Scan me with your  
phone's camera!

## WE LOOK FORWARD TO PLANNING A PARK WITH YOU!