

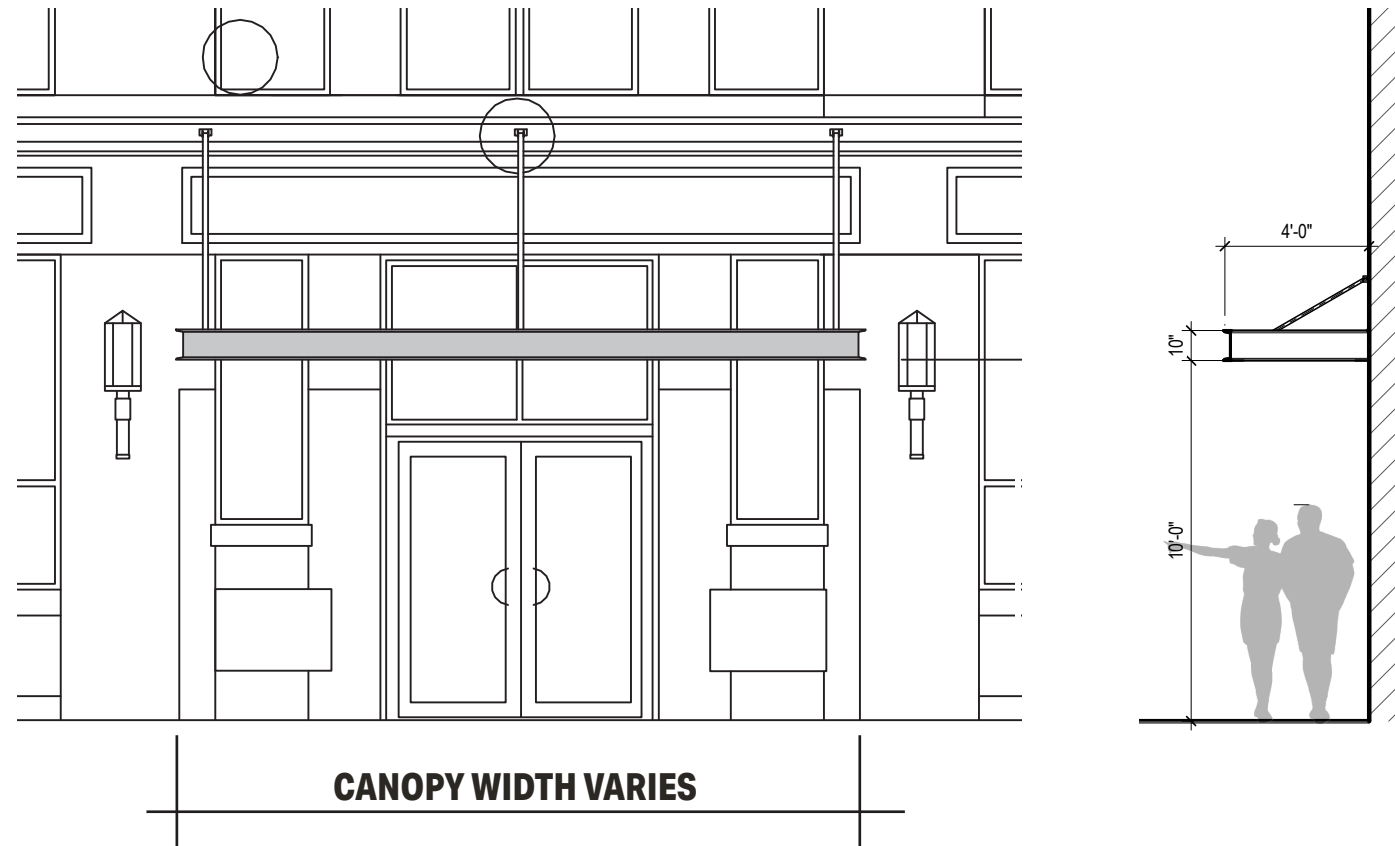
# THOMSON PL.

FORT POINT

# CANOPIES AT OFFICE ENTRIES

# CANOPIES AT OFFICE ENTRIES

Proposed canopies are to be steel with channel fascia similar to the one installed at Trader Joe's



Neighborhood Precedents: 11 and 44 Thomson Place

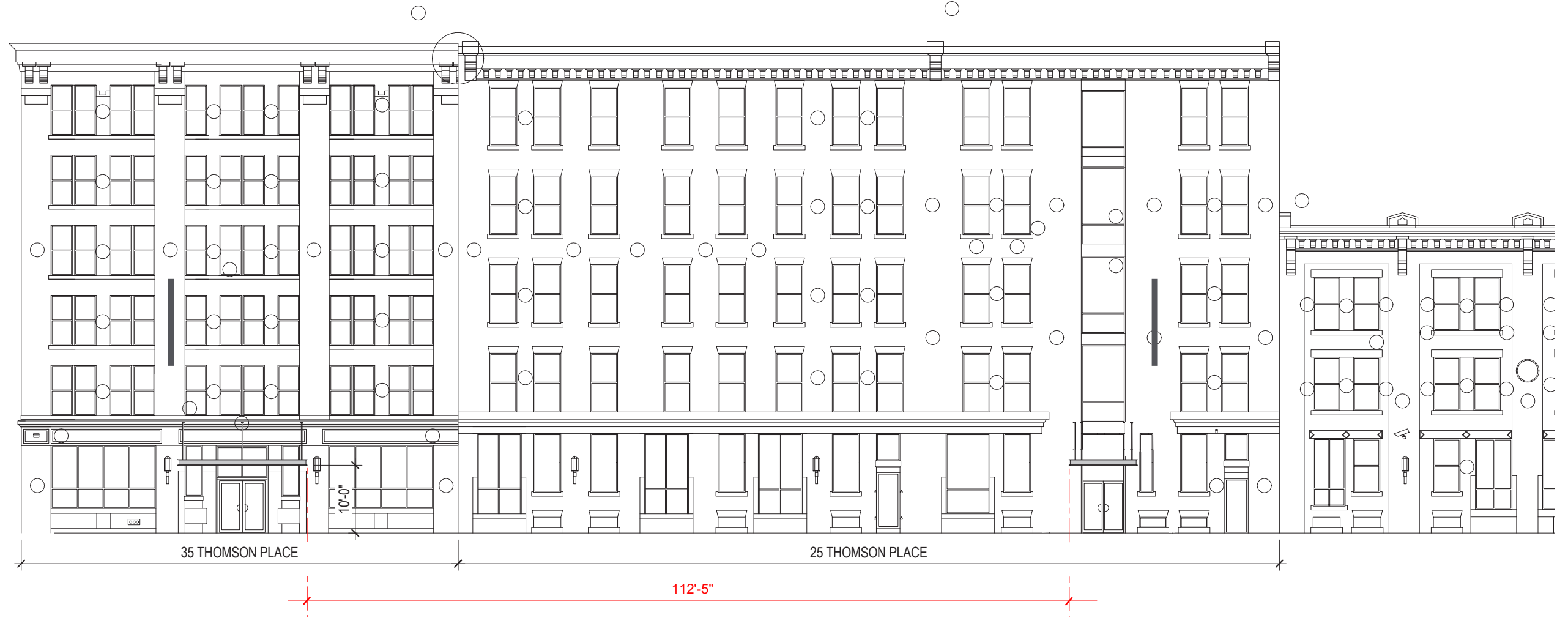
# CANOPIES AT OFFICE ENTRIES - ELEVATIONS

ALL CANOPIES ARE 10'-0" ABOVE THE SIDEWALK AND 4'-0" FROM THE BUILDING. WIDTH OF CANOPY VARIES



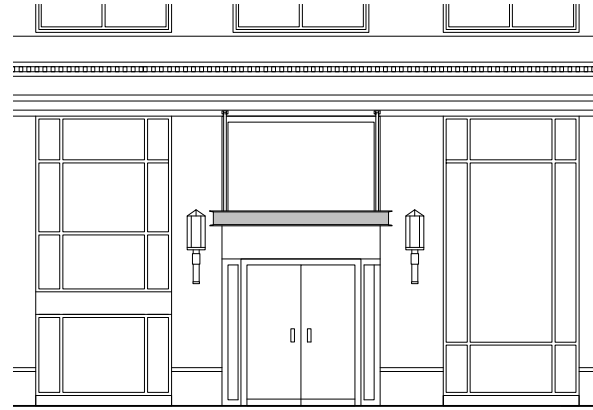
# CANOPIES AT OFFICE ENTRIES - ELEVATIONS

ALL CANOPIES ARE 10'-0" ABOVE THE SIDEWALK AND 4'-0" FROM THE BUILDING. WIDTH OF CANOPY VARIES

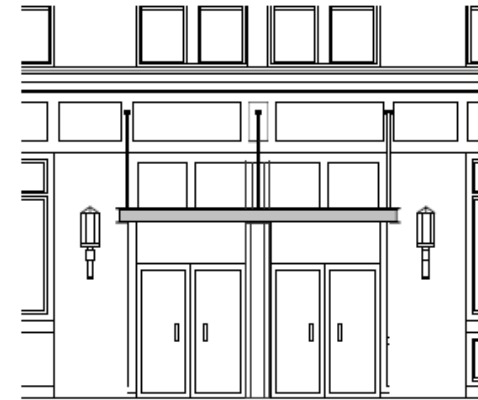


## CANOPIES AT OFFICE ENTRIES - ELEVATIONS

ALL CANOPIES ARE 10'-0" ABOVE THE SIDEWALK AND 4'-0" FROM THE BUILDING. WIDTH OF CANOPY VARIES



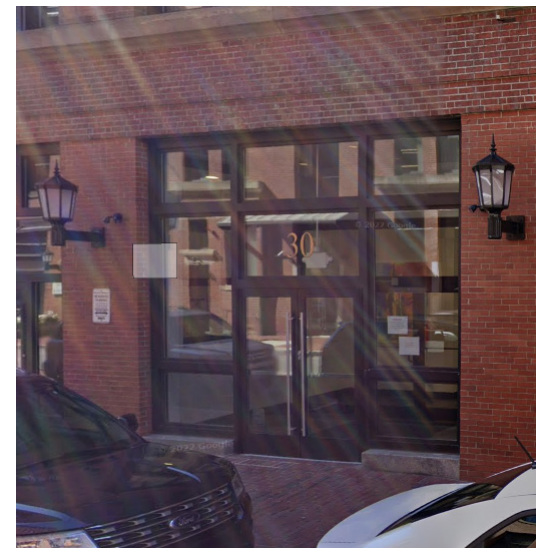
12 THOMSON PLACE  
10"H x 10"W x 4'D



26 THOMSON PLACE  
10"H x 16"W x 4'D

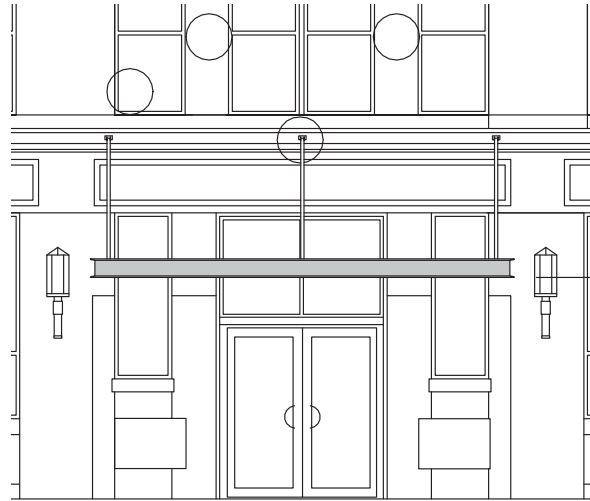


30 THOMSON PLACE  
10"H x 16"W x 4'D

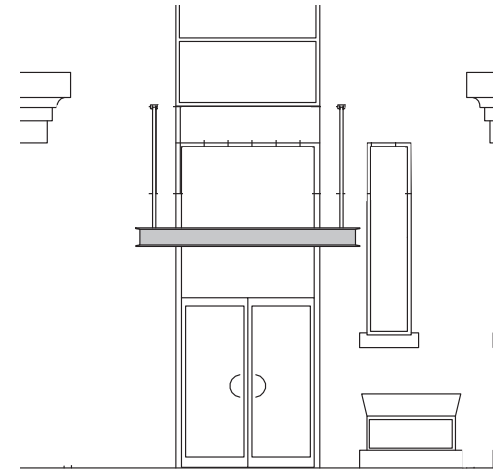


## CANOPIES AT OFFICE ENTRIES - ELEVATIONS

ALL CANOPIES ARE 10'-0" ABOVE THE SIDEWALK AND 4'-0" FROM THE BUILDING. WIDTH OF CANOPY VARIES



35 THOMSON PLACE  
10"H x 20"W x 4'D

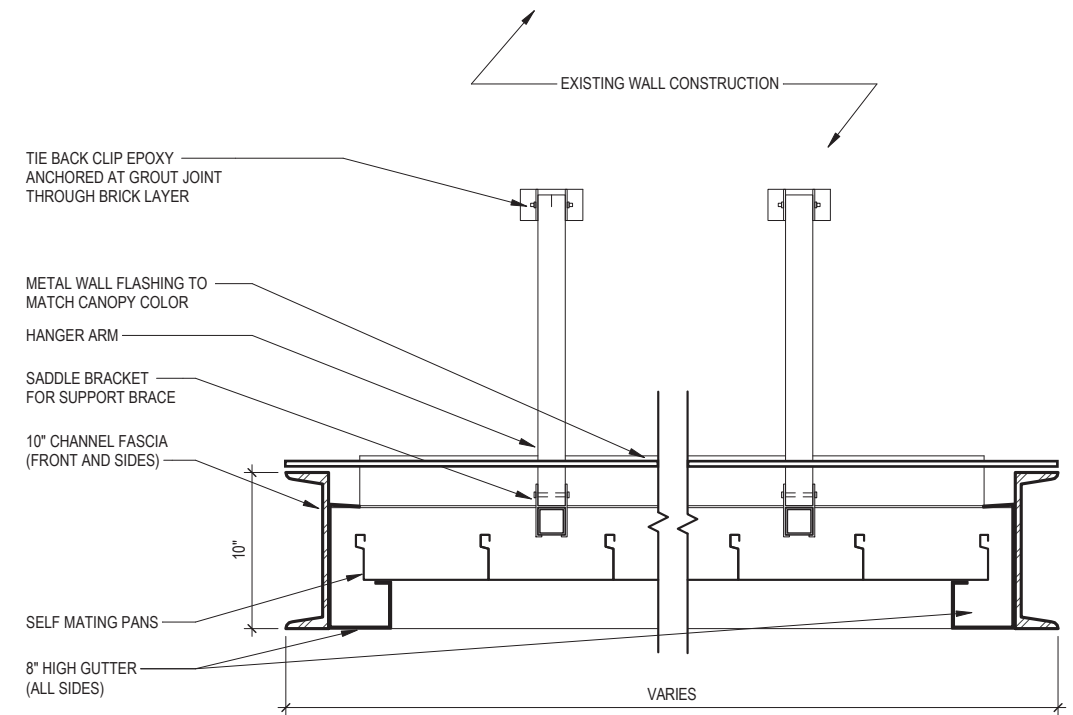
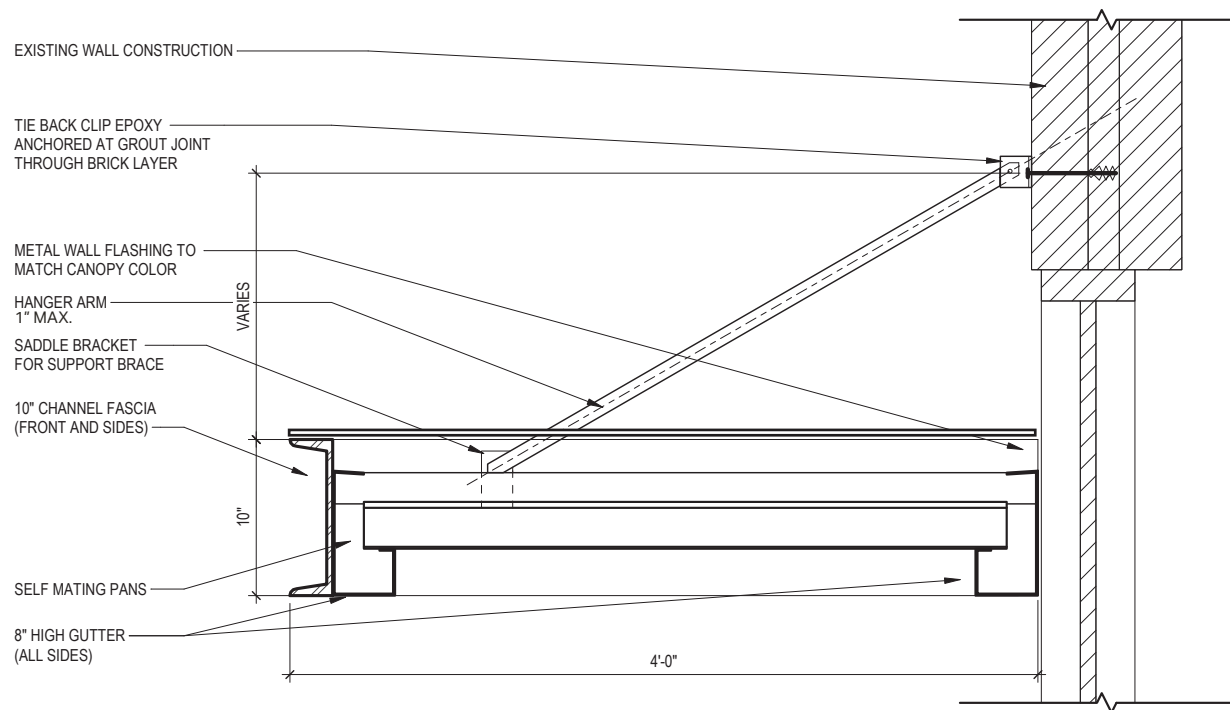
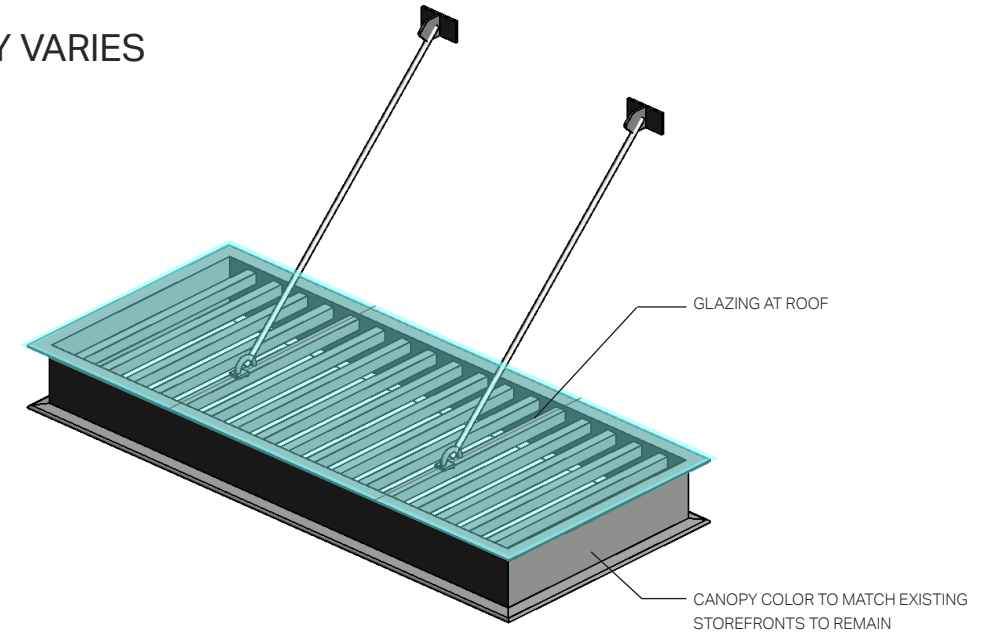
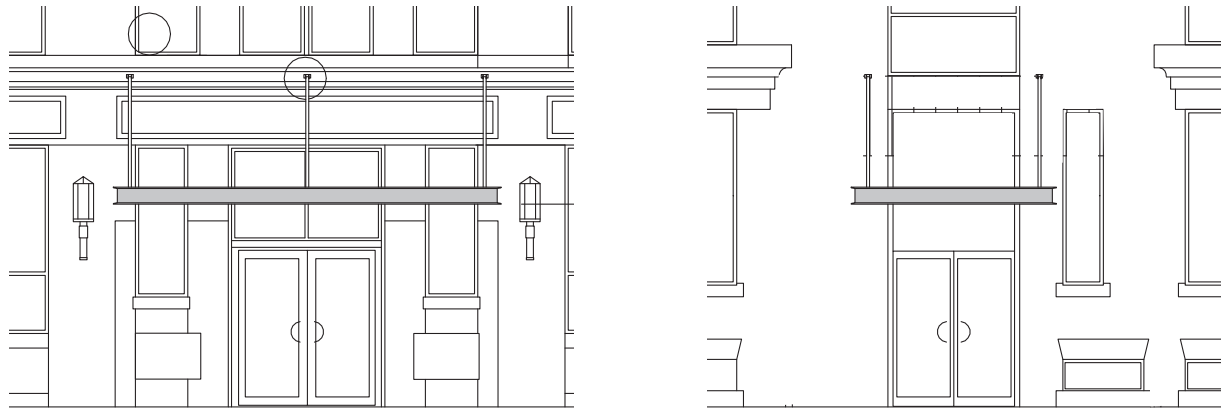


25 THOMSON PLACE  
10"H x 10"W x 4'D



# CANOPIES AT OFFICE ENTRIES - DETAILS

ALL CANOPIES ARE 10'-0" ABOVE THE SIDEWALK AND 4'-0" FROM THE BUILDING. WIDTH OF CANOPY VARIES

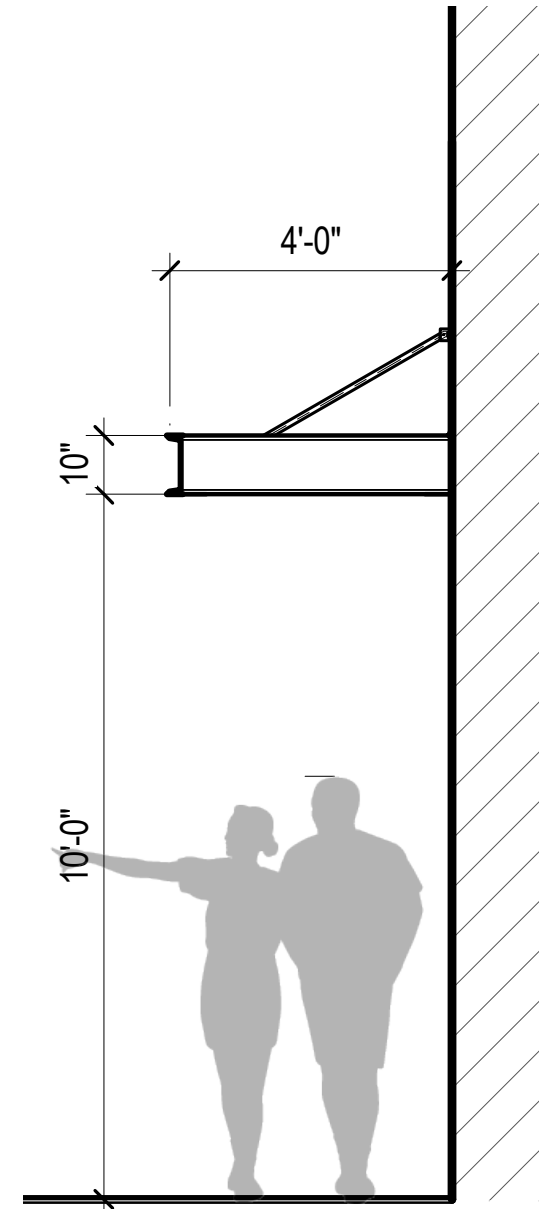




## CANOPIES AT OFFICE ENTRIES - DETAILS

ALL CANOPIES ARE 10'-0" ABOVE THE SIDEWALK AND 4'-0" FROM THE BUILDING. WIDTH OF CANOPY VARIES

NOTE: CATENARY LIGHTS IN RENDERING ARE EXISTING TO REMAIN. NO NEW CATENARY LIGHTS ARE BEING PROPOSED.

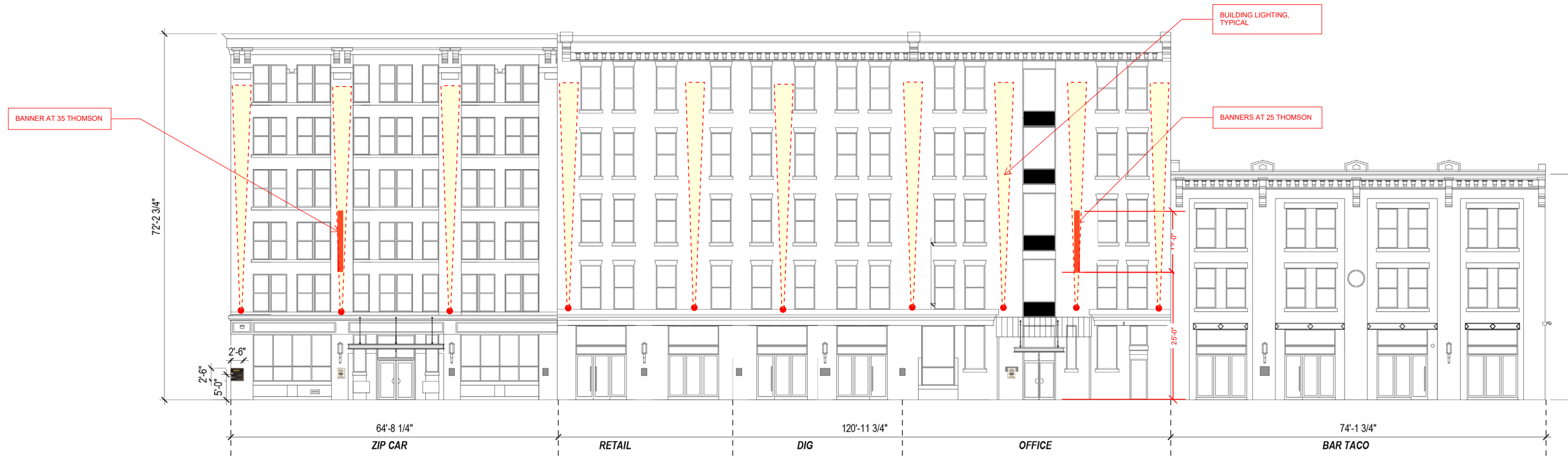


# BUILDING LIGHTING

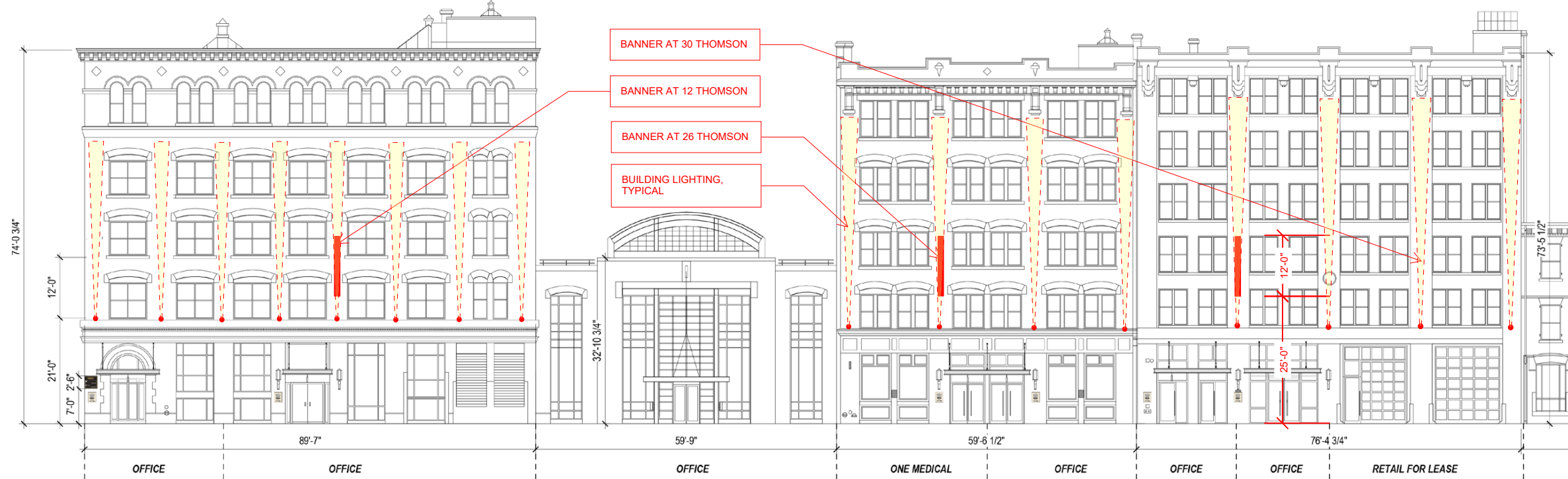
# BUILDING LIGHTING - LOCATIONS



# BUILDING LIGHTING - LOCATIONS



# BUILDING LIGHTING - LOCATIONS



# BUILDING LIGHTING

**Existing:**  
Large lighting pendants on facade only highlight the lower level and not visible from ends of the street

**Proposed:**  
Draw the eye up and improve street safety with spot pendants that highlight the brickwork and facades

Refer to previous slide for layout for lighting



Mockup

NOTE: CATENARY LIGHTS IN RENDERING ARE EXISTING TO REMAIN. NO NEW CATENARY LIGHTS ARE BEING PROPOSED.



Existing



Proposed

# BUILDING LIGHTING - PRODUCT

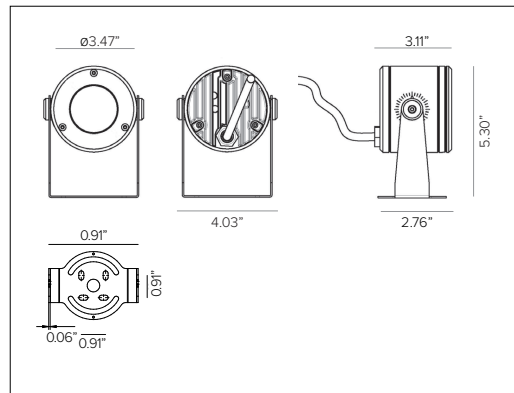
TARGETTI

## DART ROUND SMALL REMOTE

Compact Professional Adjustable Floodlight



DART ROUND SMALL REMOTE Shown in Ferrite Dark Grey finish.



### CONCEPT

Small footprint fully adjustable LED projector with remote driver.

### MECHANICAL CHARACTERISTICS

<b>Dimensions</b>	5.30"H x 4.03"W x 3.11"D
<b>Materials</b>	Die-cast aluminum powder coated body and joints for maximum heat dissipation.
<b>Finish</b>	Textured finish. ● Ferrite Dark Grey ● Heritage Brown ● Bronze ● Black ● White ● Sandstone Grey
<b>Power Connection</b>	Pre-cabled with 25' Belden direct burial 18ga 2 conductor cable for connection to remote power supply.
<b>Functionality</b>	Adjustable up to ±60° on the horizontal plane with slotted mounting base and +90°/45° on the vertical plane with aim locking set screw.
<b>Mounting</b>	Fixture can be installed directly to mounting surface or used with optional mounting installation accessories.
<b>Weight</b>	1.5lbs
<b>Protection</b>	IP66
<b>Impact</b>	IK10

### CERTIFICATIONS

cULus Class 2 Wet Location Listed.  
Tested in accordance with LM-79-08.  
Compliant with California energy regulations.  
IEC 62471.  
RoHS3 EU 215/863

### WARRANTY

5 year limited warranty

### ELECTRICAL CHARACTERISTICS

<b>Power Supply</b>	Remote Class 2 120V-277V AC power supply required, see available options.
<b>Wattage</b>	2W (NSP) / 15W nominal (SP / FL / MWFL)
<b>Voltage</b>	24V DC

### SOURCE

NSP uses high efficiency LED Emitter. SP, FL, and MWFL use high efficiency LED Chip on Board with optimized melanopic ratios.

TM30	CCT (Nominal)	CRI	Rf	Rg	MR	SDCM
	2700K	81	80	97	2	2
	3000K	82	82	97	2	2
	3500K	82	81	97	2	2
	4000K	82	81	97	2	2
	5000K	84	81	97	2	2

*Ro90 available upon request*

### OPTIC

Optical system is dependent on beam angle. NSP, SP and FL versions comprised with methacrylate lenses. MWFL version comprised of precision optics with convex reflective anodized aluminum facets.

Beam		NSP 5°	SP 16°	FL 30°	MWFL 48°
<b>Delivered Lumens</b>	<b>3000K</b>	162Lm	1342Lm	1403Lm	1672Lm
	<b>4000K</b>	175Lm	1418Lm	1415Lm	1685Lm
<i>For 2700K lumen values use multiplier of 0.96 from 3000K. For 3500K lumen values use multiplier of 1.02 from 3000K. For 5000K lumen values use multiplier of 1.02 from 4000K.</i>					
<b>Efficacy</b>		112Lm/W max. Refer to photometric graphs for specific values.			
<b>Lifetime</b>		NSP: L80/B10 60,000hrs at max TA +25°C SP / FL: L80/B10 80,000hrs at max TA +25°C MWFL: L80/B10 100,000hrs at max TA +25°C			
<b>Photobiological Classification</b>		Low risk safety RG1			

TARGETTI

## DART ROUND SMALL REMOTE

ORDERING CODE

<b>DRS</b>	1	2	3	4	5	6	7	8	9	10
Ex: DRSRPFELINS27 / DMLE301242UD							OPTIONAL	REQUIRED		OPTIONAL

1 - PRODUCT CODE	2 - DRIVER	3 - FINISH	4 - WATTAGE	5 - OPTIC	6 - KELVIN	7 - OPTIONAL
<b>DRS</b> — DART ROUND SMALL	<b>RP</b> — Remote Power	<b>FE</b> — Ferrite Dark Grey <b>HB</b> — Heritage Brown <b>BZ</b> — Bronze <b>WT</b> — White <b>BT</b> — Black <b>SG</b> — Sandstone Grey <b>RAL</b> — Custom RAL	<b>L1<sup>a</sup></b> — 2W <b>L2<sup>c</sup></b> — 15W	<b>NS</b> — NSP 5° <b>SP</b> — SP 16° <b>FL</b> — FL 30° <b>MF</b> — MWFL 48°	<b>27</b> — 2700K <b>30</b> — 3000K <b>35</b> — 3500K <b>40</b> — 4000K <b>50</b> — 5000K	<b>MG<sup>a</sup></b> — Marine Grade

8 - POWER SUPPLY	9 - EXTERNAL OPTICAL ACCESSORIES	10 - INSTALLATION ACCESSORIES
<b>REQUIRED</b> See Power Supply section for available options.	<a href="#">Blade of Light Linear Spread Lens</a> See section for details <a href="#">Anti-glare Louver</a> See section for details <a href="#">Asymmetric Snoot</a> See section for details <a href="#">Symmetric Snoot</a> See section for details <a href="#">Symmetric Super Snoot</a> See section for details	<a href="#">Rotational Bracket</a> See section for details <a href="#">Earth spike</a> See section for details <a href="#">Back Plate</a> See section for details

<sup>a</sup> Marine Grade is recommended for use in environments with occasional exposure to salt air, reclaimed water, fertilizers, chemical cleaners, or frequent pressure washing (steam) cleaning. Fixture housing complete with marine grade cathaphoresis suitable for use in marine grade environments. Not to be in direct contact with salt or corrosive agents for extended periods of time.

<sup>b</sup> 2W available with NSP only.

<sup>c</sup> 15W available with SP, FL, and MWFL only.

DART ROUND SMALL REMOTE

8 - POWER SUPPLY (REQUIRED)

ENCLOSURE								
Part No.	Wattage	Control	Dim Range	Rating	In / Out Voltage	Certification	Dimensions (Enclosure)	Description
DMLE301242UD	30W	MLV / ELV / 0-10V / TRIAC	MLV <10% / ELV <10% / 0-10V <5%	NEMA3R	120-277V / 24V	UL Class 2	4.47" X 6.79" X 1.38"	EMCOD MLE-UD electronic driver with wiring compartment.
DELV30124DJBX	30W	0-10V	1%	IP65	120-277V / 24V	UL Class 2	12.1" X 2.4" X 1.4"	Magnitude SOLIDrive electronic driver with built in junction box.
DMLE601242UD	60W	MLV / ELV / 0-10V / TRIAC	MLV <10% / ELV <10% / 0-10V <5%	NEMA3R	120-277V / 24V	UL Class 2	4.47" X 6.79" X 1.38"	EMCOD MLE-UD electronic driver with wiring compartment.
DELV60124DJBX	60W	0-10V	1%	IP65	120-277V / 24V	UL Class 2	12.1" X 2.4" X 1.4"	Magnitude SOLIDrive electronic driver with built in junction box.
DMLE961242UD	96W	MLV / ELV / 0-10V / TRIAC	MLV <10% / ELV <10% / 0-10V <5%	NEMA3R	120-277V / 24V	UL Class 2	5.16" X 7.73" X 1.54"	EMCOD MLE-UD electronic driver with wiring compartment.
DELV96124DJBX	96W	0-10V	1%	IP65	120-277V / 24V	UL Class 2	12.1" X 2.4" X 1.4"	Magnitude SOLIDrive electronic driver with built in junction box.
DMLE1922242UD	2X96W	MLV / ELV / 0-10V / TRIAC	MLV <10% / ELV <10% / 0-10V <5%	NEMA3R	120-277V / 24V	UL Class 2	5.04" X 10.94" X 1.81"	EMCOD MLE-UD electronic driver with wiring compartment.
DMLE2882242UD	3X96W	MLV / ELV / 0-10V / TRIAC	MLV <10% / ELV <10% / 0-10V <5%	NEMA3R	120-277V / 24V	UL Class 2	5.04" X 10.94" X 1.81"	Magnitude SOLIDrive electronic driver with built in junction box.
STANDALONE								
Part No.	Wattage	Control	Dim Range	Rating	In / Out Voltage	Certification	Dimensions (Standalone)	Description
DELV30124D	30W	0-10V	1%	IP65	120-277V / 24V	UR Class 2	7.5" X 2.4" X 1.4"	Magnitude SOLIDrive electronic standalone driver. <b>UL listed enclosure provided by others.</b>
DELV60124D	60W	0-10V	1%	IP65	120-277V / 24V	UR Class 2	7.5" X 2.4" X 1.4"	Magnitude SOLIDrive electronic standalone driver. <b>UL listed enclosure provided by others.</b>
DELV96124D	96W	0-10V	1%	IP65	120-277V / 24V	UR Class 2	7.5" X 2.4" X 1.4"	Magnitude SOLIDrive electronic standalone driver. <b>UL listed enclosure provided by others.</b>

MAX FIXTURES PER DRIVER						
Fixture Wattage	Driver Wattage					
	30W	60W	96W	2X96W	3X96W	
	2W	12	24	38	38+38	38+38+38
15W	1	3	5	5+5	5+5+5	

MAX CABLE DISTANCE						
Fixture Wattage	No. Fixtures	Load	Cable Size			
			18 AWG	16 AWG	14 AWG	12 AWG
2W	1-4	≤16W	72ft	115ft	180ft	290ft
	5-8	≤32W	42ft	67ft	106ft	165ft
	9-12	≤48W	28ft	44ft	70ft	112ft
	13-16	≤54W	20ft	33ft	52ft	84ft
15W	1-20	≤80W	16ft	26ft	41ft	66ft
	1	≤16W	72ft	115ft	180ft	290ft
	2	≤32W	42ft	67ft	106ft	165ft
	3	≤48W	28ft	44ft	70ft	112ft
	4	≤54W	20ft	33ft	52ft	84ft

DART ROUND SMALL REMOTE

9 - EXTERNAL OPTICAL ACCESSORIES (OPTIONAL)

MAXIMUM OF TWO ACCESSORIES PER FIXTURE.

Blade Light Linear Spread Lens. PMMA holographic filter.  
Part No. **1E4002 (\*)**

Anti glare louver with removable baffles for different levels of glare control. Powder coat stainless steel. Cutoff 103°. **Not compatible with 1E4003, 1E4004 or 1E4057.**  
Part No. **1E4005 (\*)**

Asymmetric snoot. Powder coated stainless steel. Cutoff 53°. **Not compatible with 1E4004, 1E4005 or 1E4057.**  
Part No. **1E4003 (\*)**

Symmetric snoot. Powder coated stainless steel. Cutoff 109°. **Not compatible with 1E4003, 1E4005 or 1E4057.**  
Part No. **1E4004 (\*)**

Symmetric super snoot. Powder coated stainless steel. Cutoff 53°. **Not compatible with 1E4003, 1E4004 or 1E4005.**  
Part No. **1E4057 (\*)**

● Ferrite Dark Grey (Default) ● Heritage Brown (HB)\* ● Bronze (BZ)\* ● White (WT)\* ● Black (BT)\* ● Sandstone Grey (SG)\*

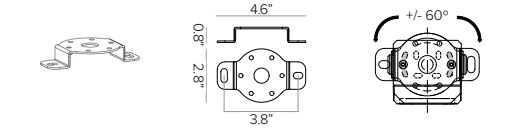
*\*Add suffix to end of number to identify finish (EX. 1E3015HB)*



**DART ROUND SMALL REMOTE**

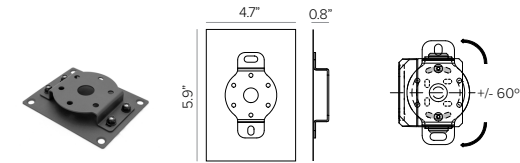
**10 - INSTALLATION ACCESSORIES (OPTIONAL)**

MAXIMUM OF ONE ACCESSORY PER FIXTURE



Rotational bracket for surface installation. Powder coated stainless steel.

Part No. **1E3015 (\*)**

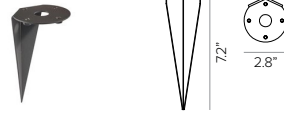


Back plate with rotational bracket for surface mount installation. Powder coated stainless steel with Neoprene black foam. Included with 1E3015 and factory attached Stainless Steel black oxide bolts and locking nuts.

Part No. **1US3015 (\*)**

- Ferrite Dark Grey (Default)
- Heritage Brown (HB)\*
- Bronze (BZ)\*
- White (WT)\*
- Black (BT)\*
- Sandstone Grey (SG)\*

\*Add suffix to end of number to identify finish (EX. 1E3015HB)



Earth spike. Powder coated stainless steel.

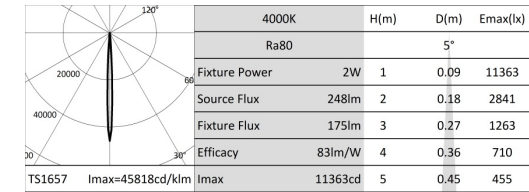
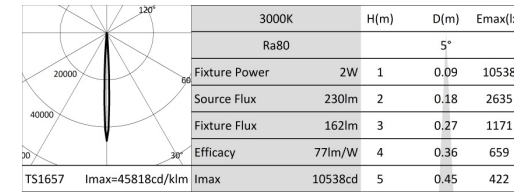
Part No. **1E3016 (\*)**

**DART ROUND SMALL REMOTE**

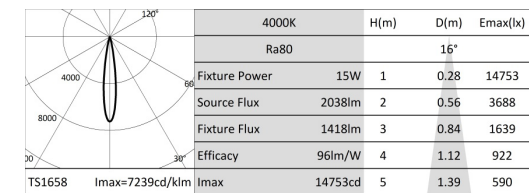
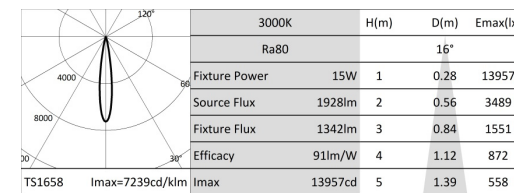
**PHOTOMETRY**

IES FILES WATTAGE AND EFFICIENCY CALCULATIONS BASED WITH SUPPLIED DRIVER

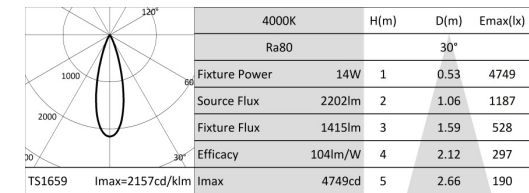
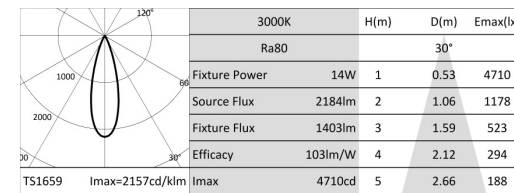
**NARROW SPOT**



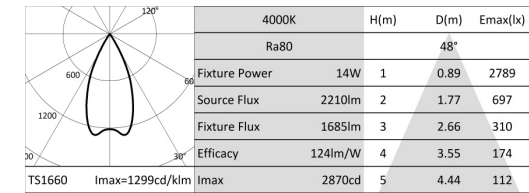
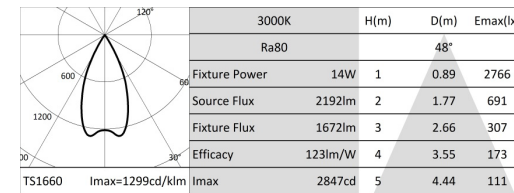
**SPOT**



**FLOOD**



**MEDIUM WIDE FLOOD**



# VENDORS



### Singage/Wayfinding/Art

#### Boston Building Wraps

Location: Boston MA

<https://bostonbuildingwraps.com/>

**Details:**

Experience: The Hub, Boston

Exterior Signage/Wayfinding

Building coverings

Custom outriggers

Mural alternatives

### Lighting

#### Illuminate New England

Location: Burlington MA

<https://illuminatene.com/eastern/>

**THANK YOU**