

232 Clarendon St
Boston, MA 02116

24.0064 BB
Revised
Presentation

232 Clarendon St.
Boston, MA 02116

24.0064 BB

Centry 21
Cityside

Hemenway
Construction
Management
info@hemenwaycm.com

Revised
Presentation



- Railings set back 12" from chimneys
- Previous mock up was against chimneys

232 Clarendon St.
Boston, MA 02116

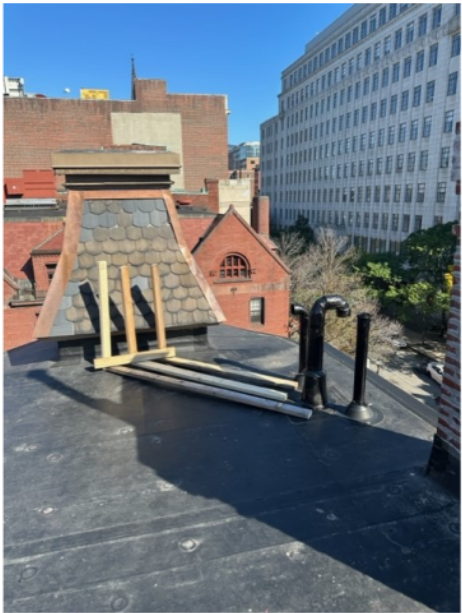
24.0064 BB

Centry 21
Cityside

Hemenway
Construction
Management
info@hemenwaycm.com

Railings

A



- Proposed move of this pipe grouping
- See street view photos for visibility
- Would remain black pipes

232 Clarendon St.
Boston, MA 02116

24.0064 BB

Centry 21
Cityside

Hemenway
Construction
Management
info@hemenwaycm.com

Pipe Group
A

B



Stainless Steel
Cap



- Proposed to install stainless steel Chimney cap on all three (3) chimnies
- All pipes would be contained within chimney cap
- Stainless steel chimney caps could be painted black

232 Clarendon St.
Boston, MA 02116

24.0064 BB

Centry 21
Cityside

Hemenway
Construction
Management
info@hemenwaycm.com

Pipe Group
B
Chimnies

C



Stainless Steel Cap



232 Clarendon St.
Boston, MA 02116

24.0064 BB

Centry 21
Cityside

Hemenway
Construction
Management
info@hemenwaycm.com



Pipe Group
B
Chimnies
Option 2

D

- A Second option is to install one (1) stainless steel Chimney cap on the front chimney and redirect the pipes on two (2) rear chimnies 90 degrees
- Pipes on rear two chimnies would point towards roof of 232 Clarendon
- Stainless steel chimney cap and pipes could be painted black



232 Clarendon St.
Boston, MA 02116

24.0064 BB

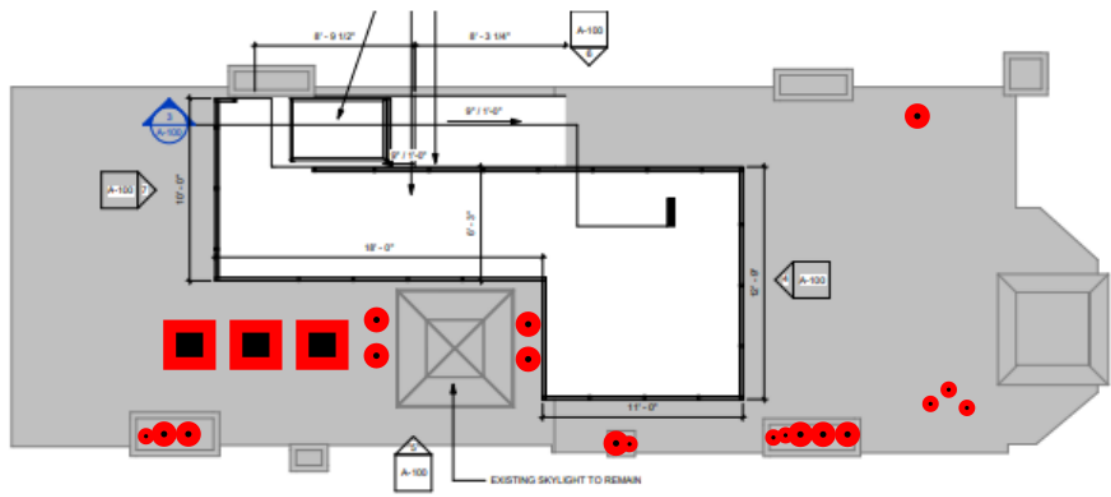
Centry 21
Cityside

Hemenway
Construction
Management
info@hemenwaycm.com

Pipe
C

E

- Proposed move of this pipe
- See street view photos for visibility
- Would remain black pipes



232 Clarendon St.
Boston, MA 02116

24.0064 BB

Centry 21
Cityside

Hemenway
Construction
Management
info@hemenwaycm.com

Roof Plan
Mechanicals

F

232 Clarendon St.
Boston, MA 02116

24.0064 BB

Centry 21
Cityside

Hemenway
Construction
Management
info@hemenwaycm.com



Enlarged
Street Views

G