

AMERICAN SHIM GUM DO

BELL TOWER RESTORATION

AACDC PRESENTATION

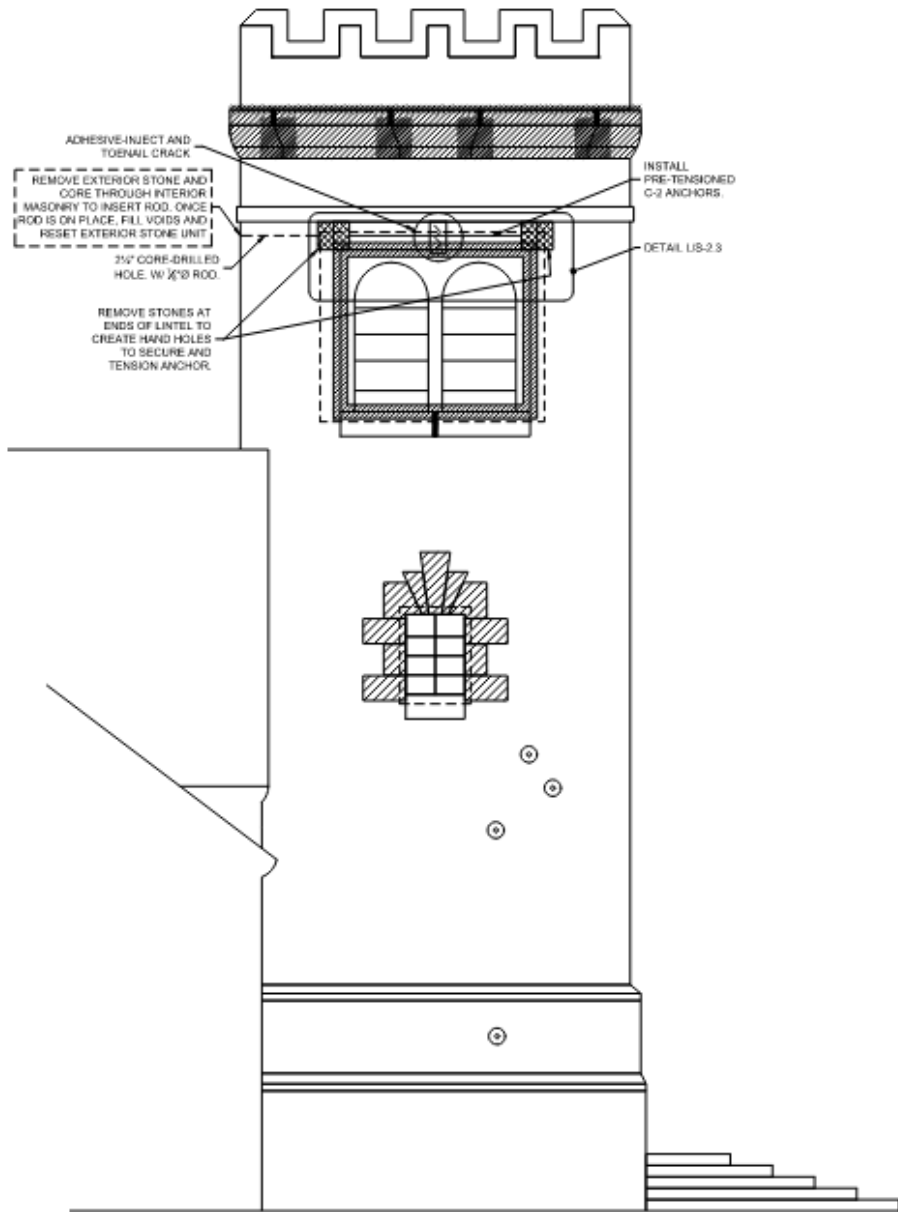


TYPICAL EXTERIOR REPAIRS

- Cutting and pointing
- Jetting out, grouting, and pointing cracked mortar joints
- Installation of lead weather caps
- Epoxy injecting cracked stone units
- Repairing the wood window frames and louvers

- Lintel removal, repair and re-installation.
- Partial rebuilding of west elevation above lintel.



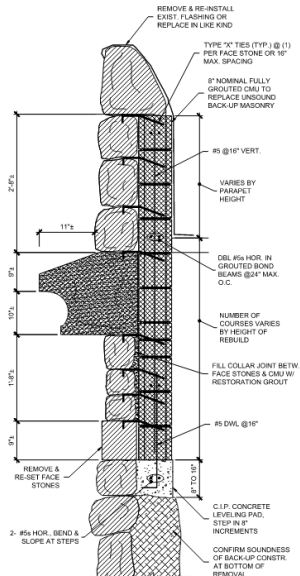


SOUTH EXTERIOR ELEVATION

1/2" = 1'-0"

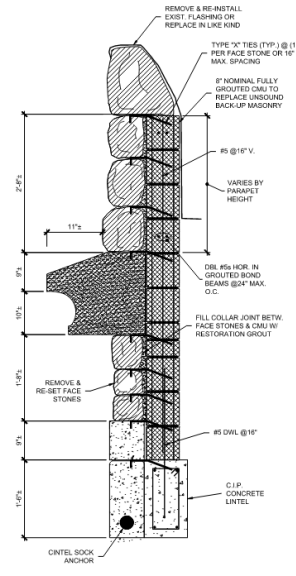
LEGEND:

- U1: CUT AND REPOINT ERODED MORTAR JOINTS
- U2: DEEPLY CUT AND REPOINT SEVERELY ERODED MORTAR JOINTS
- U3: REMOVE AND RESET LOOSE-SHIFTED STONEMWORK
- U4: JET OUT, GROUT, AND POINT CRACKED MORTAR JOINTS
- U5: DEMOLISH AND REPLACE BACKUP MASONRY
- U8: INSTALL LEAD T WEATHER CAPS AT SKY-FACING JOINTS
- U7: EPOXY INJECT CRACKED INDIVIDUAL ASHLAR STONE UNITS
- U8: PIN AND GROUT INWARD/OUTWARD BULGING MASONRY
- U9: STRIP, PRIME AND PAINT MID-LEVEL WINDOW FRAME
- U10: STRIP, PRIME, AND PAINT BELFRY LOUVERS
- U11: MISCELLANEOUS ROOF FLASHING REPAIRS
- U12: GROUT INJECTING PORT ANCHORS



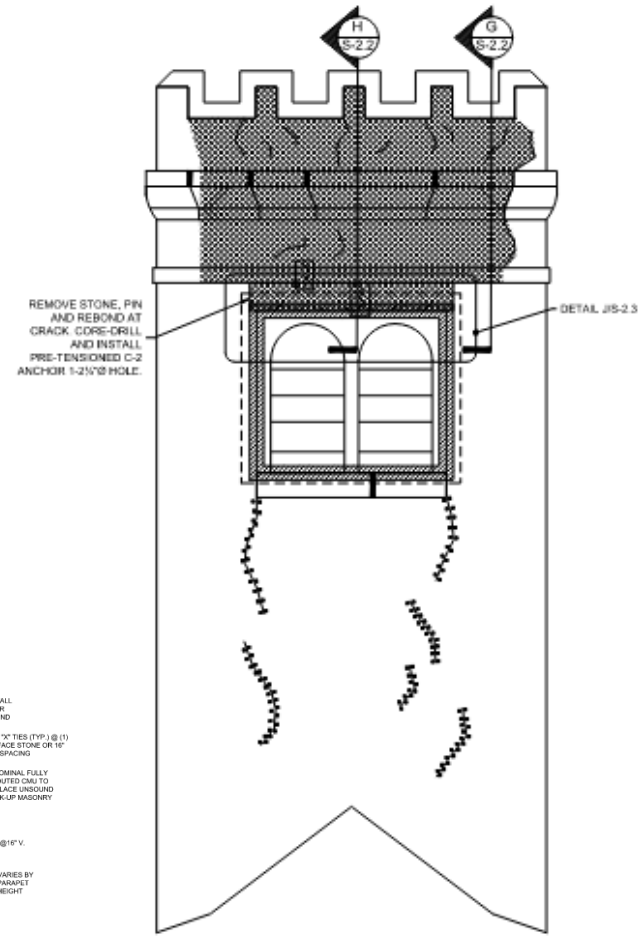
G SECTION

1/2" = 1'-0"



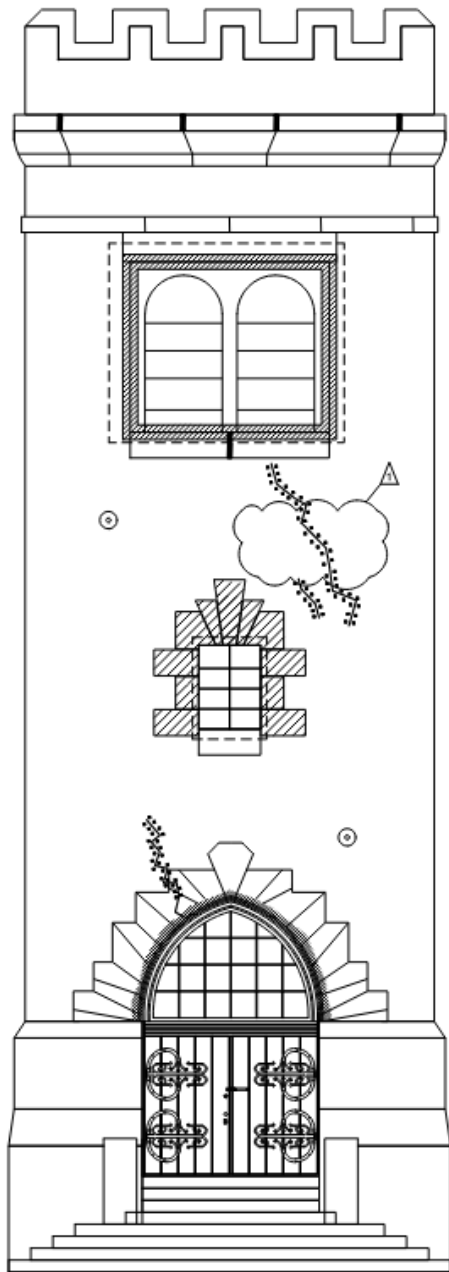
H SECTION

1/2" = 1'-0"



WEST EXTERIOR ELEVATION












1/2" = 1'-0"



EAST EXTERIOR ELEVATION (ALT #1)

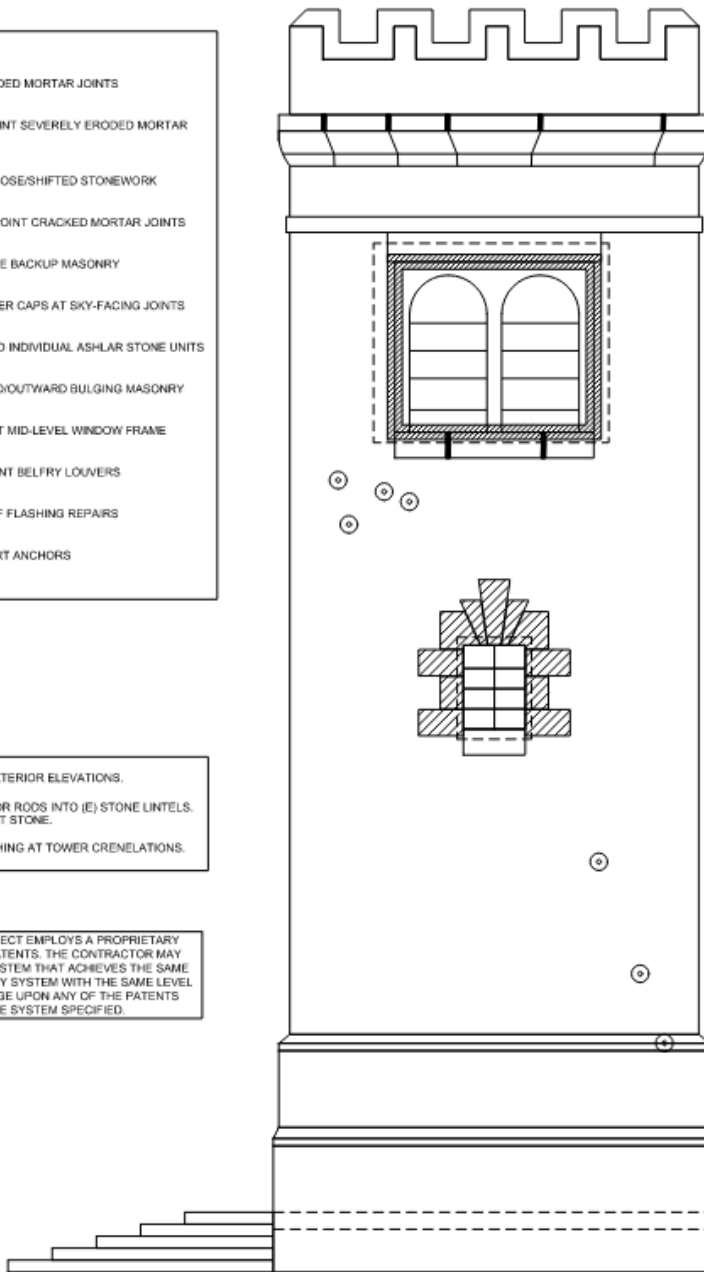
1/4" = 1'-0"

LEGEND:

-  U1: CUT AND REPOINT ERODED MORTAR JOINTS
-  U2: DEEPLY CUT AND REPOINT SEVERELY ERODED MORTAR JOINTS
-  U3: REMOVE AND RESET LOOSE/SHIFTED STONEMWORK
-  U4: JET OUT, GROUT, AND POINT CRACKED MORTAR JOINTS
-  U5: DEMOLISH AND REPLACE BACKUP MASONRY
- U6: INSTALL LEAD T WEATHER CAPS AT SKY-FACING JOINTS
-  U7: EPOXY INJECT CRACKED INDIVIDUAL ASHLAR STONE UNITS
-  U8: PIN AND GROUT INWARD/OUTWARD BULGING MASONRY
-  U9: STRIP, PRIME AND PAINT MID-LEVEL WINDOW FRAME
-  U10: STRIP, PRIME, AND PAINT BELFRY LOUVERS
-  U11: MISCELLANEOUS ROOF FLASHING REPAIRS
-  U12: GROUT INJECTING PORT ANCHORS

ADD ALT #3: CUT AND REPOINT FULL EXTERIOR ELEVATIONS.
 ADD ALT #4: INSERT (N) 3/8" S.S. ANCHOR RODS INTO (E) STONE LINTELS.
 REPLACE (E) BRICK ARCHES W/ CAST STONE.
 ADD ALT. #5: REPLACE (E) STONE FLASHING AT TOWER CRENELATIONS.

A PORTION OF THE WORK ON THIS PROJECT EMPLOYS A PROPRIETARY SYSTEM THAT IS SUBJECT TO ACTIVE PATENTS. THE CONTRACTOR MAY PROPOSE OR DEVISE AN ALTERNATE SYSTEM THAT ACHIEVES THE SAME RESULT AS THE SPECIFIED PROPRIETARY SYSTEM WITH THE SAME LEVEL OF SAFETY BUT THAT DOES NOT INFRINGE UPON ANY OF THE PATENTS OR RESTRICTED TRADE SECRETS OF THE SYSTEM SPECIFIED.

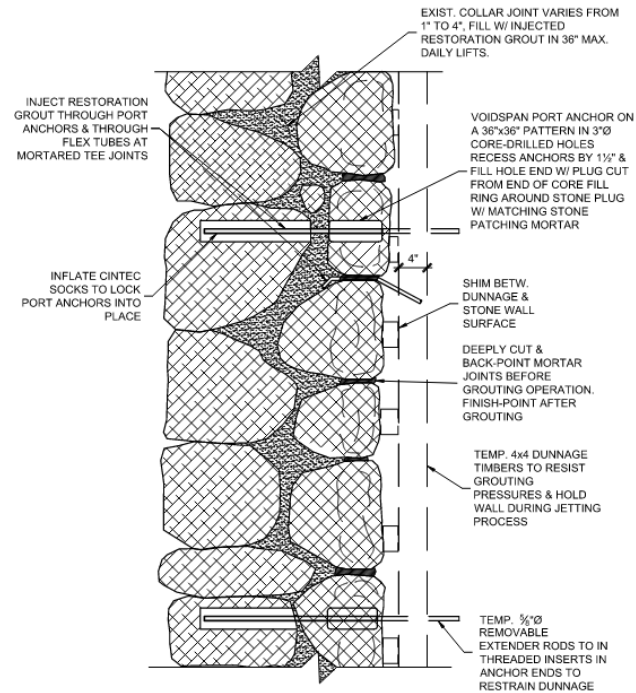


NORTH EXTERIOR ELEVATION (ALT #2)

1/4" = 1'-0"

TYPICAL INTERIOR REPAIRS

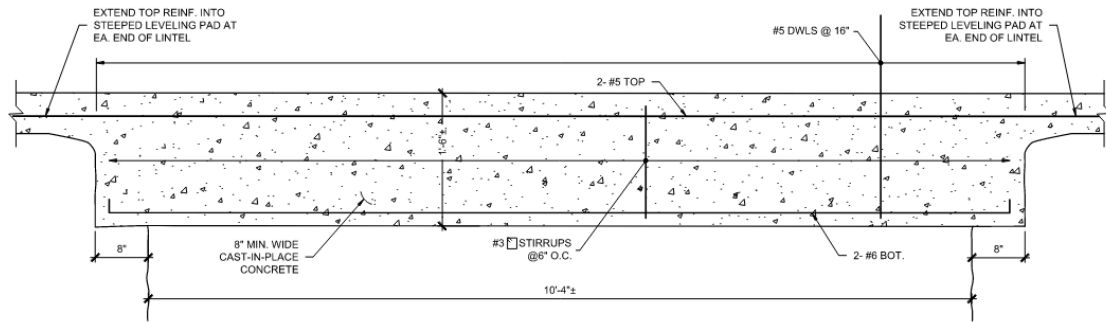
- Reinforcing of all three floor levels
- Pinning and grouting of bulging masonry
- Jet-cleaning, pointing and grouting of masonry cracks
- Cutting and pointing of masonry arches
- Installation of pretensioned tie for arch reinforcement



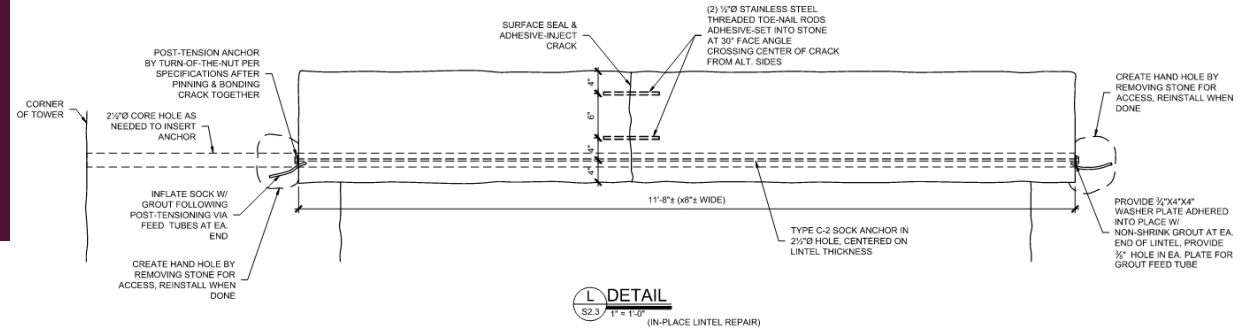
1 DETAIL
S2.2 1" = 1'-0"



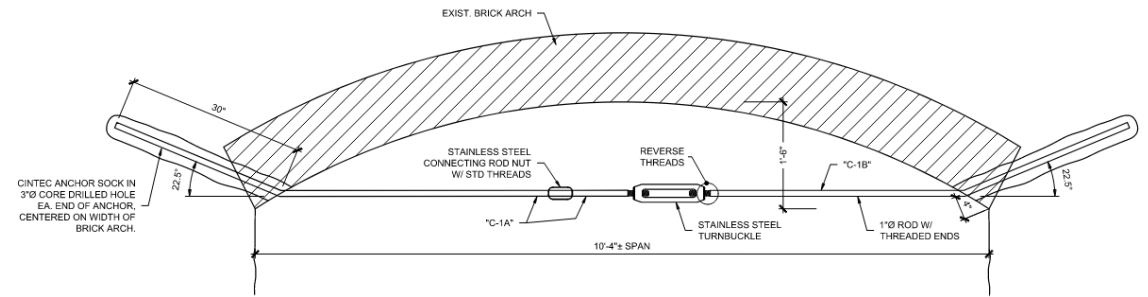
LINTEL & ARCH REPAIR DETAILS



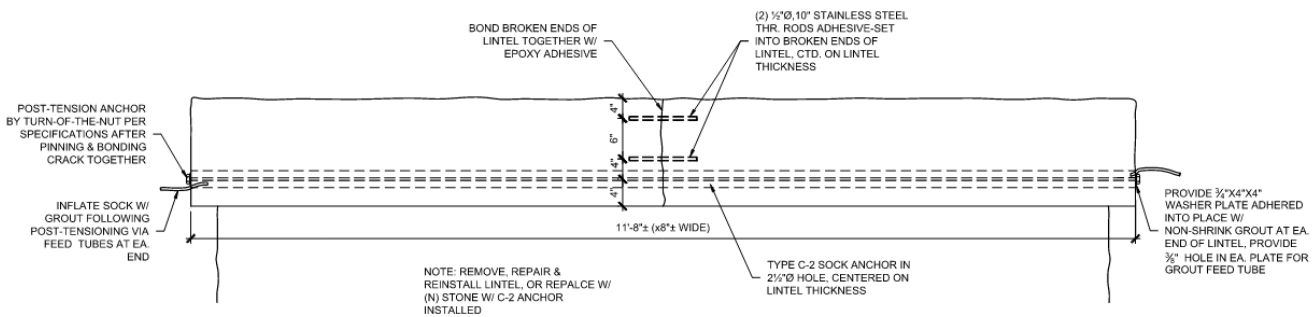
K CONCRETE LINTEL DETAIL
S2.3 1" = 1'-0"



L DETAIL
S2.3 1" = 1'-0" (IN-PLACE LINTEL REPAIR)



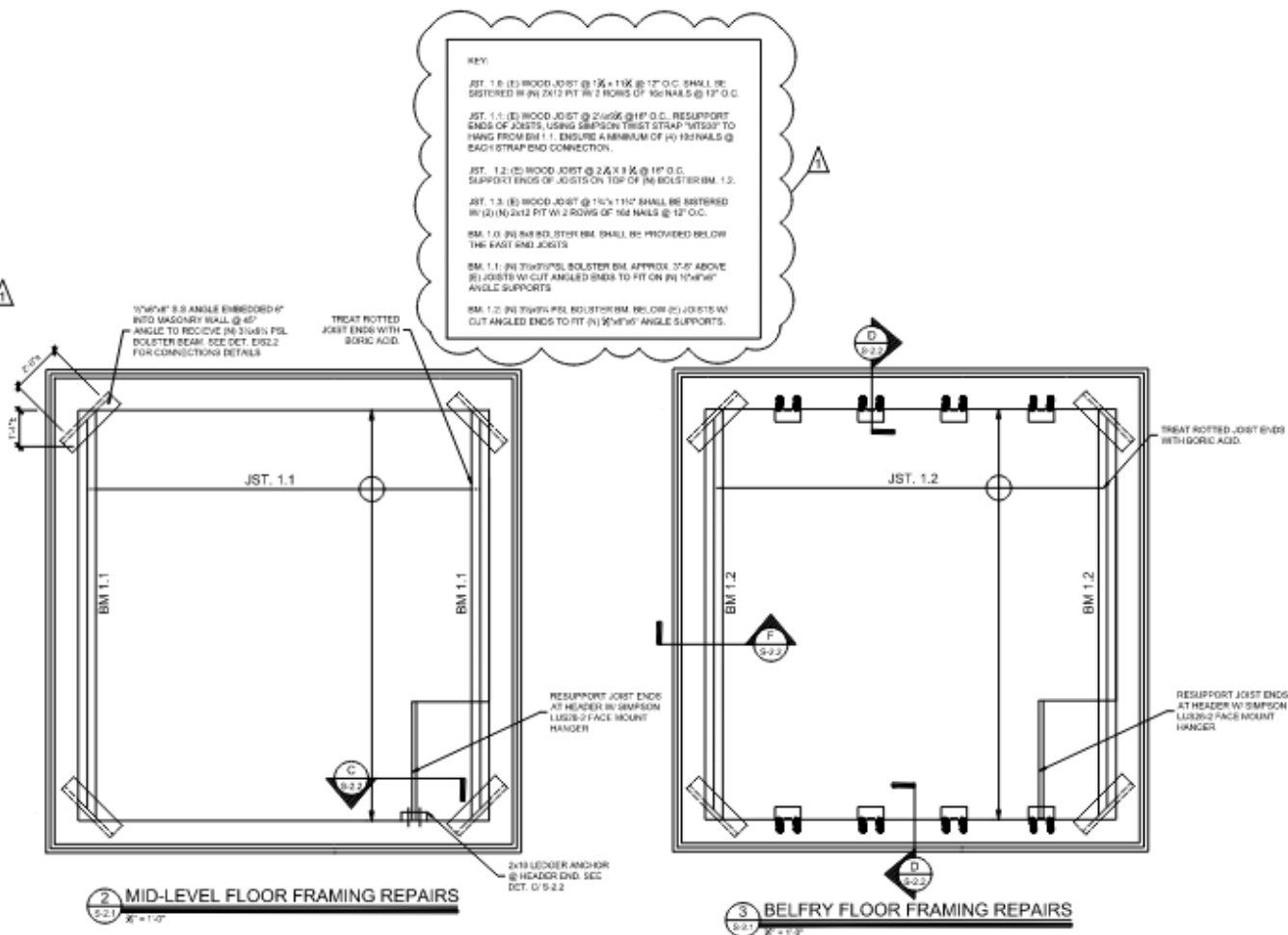
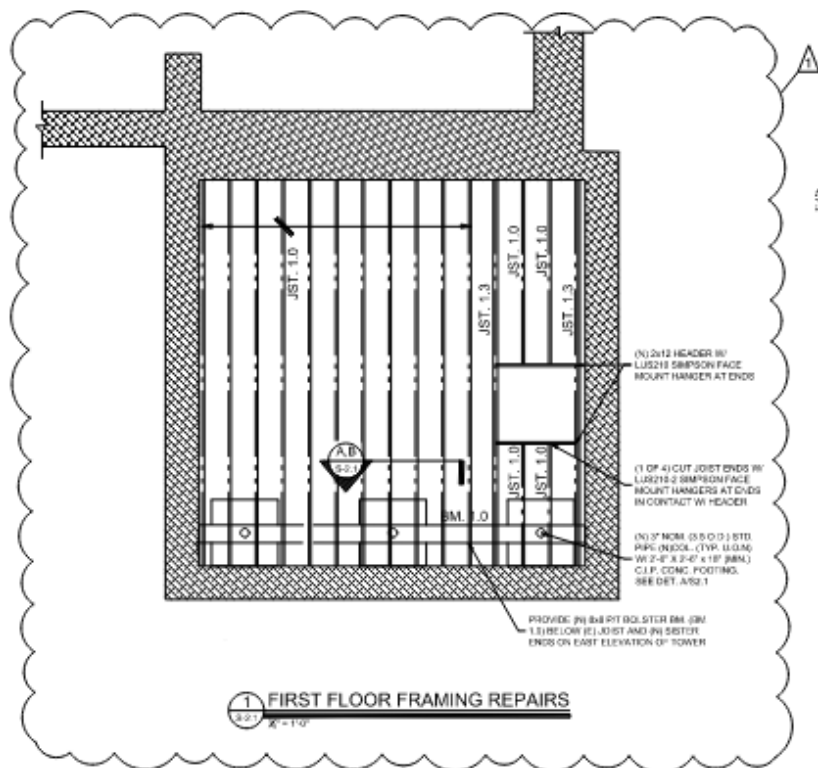
M DETAIL
S2.3 1" = 1'-0"



J DETAIL
S2.3 1" = 1'-0" (REMOVED STONE LINTEL REPAIR)



INTERIOR FLOOR REPAIRS



KEY:

JST. 1.0 (E) WOOD JOIST @ 16" x 11K @ 12" O.C. SHALL BE RESTORED W/ (N) 2x12 PT W/ 2 ROWS OF 16d NAILS @ 12" O.C.

JST. 1.1 (E) WOOD JOIST @ 2x10K @ 16" O.C. RESUPPORT ENDS OF JOISTS USING SIMPSON TRIST STRAP "UTS03" TO HANG FROM BM 1.1. ENSURE A MINIMUM OF 4" 16d NAILS @ EACH STRAP END CONNECTION.

JST. 1.2 (E) WOOD JOIST @ 2x8 x 1 K @ 16" O.C. SUPPORT ENDS OF JOISTS ON TOP OF (N) BOLSTER BM. 1.2.

JST. 1.3 (E) WOOD JOIST @ 11" x 11K SHALL BE RESTORED W/ (N) 2x12 PT W/ 2 ROWS OF 16d NAILS @ 12" O.C.

BM. 1.0 (N) 8x18 STD. BM. SHALL BE PROVIDED BELOW THE EAST END JOISTS

BM. 1.1 (N) 3x10 PSL BOLSTER BM. APPROX. 3'-0" ABOVE (E) JOISTS W/ CUT ANGLED ENDS TO FIT ON (N) 1/2"X6" ANGLE SUPPORTS

BM. 1.2 (N) 3x10 PSL BOLSTER BM. BELOW (E) JOISTS W/ CUT ANGLED ENDS TO FIT (N) 3/4"X6" ANGLE SUPPORTS.



PARTIALLY
COLLAPSING
FLOOR



SEVERLY
ERODED
FRAMING



ROTTING
JOIST ENDS