

# MASSACHUSETTS DEPARTMENT OF TRANSPORTATION HIGHWAY DIVISION

## PLAN AND PROFILE OF ELLIS ELEMENTARY SAFE ROUTES TO SCHOOL IN THE CITY OF BOSTON SUFFOLK COUNTY

# PRELIMINARY RIGHT OF WAY PLANS

**BOSTON  
ELLIS ELEMENTARY SCHOOL**

STATE	FED. AID PROJ. NO.	SHEET NO.	TOTAL SHEETS
MA		1	14
PROJECT FILE NO.		610537	

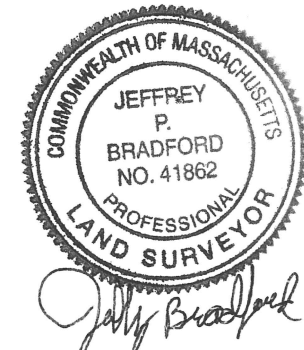
**PRELIMINARY RIGHT OF WAY  
TITLE SHEET & INDEX**

THESE PLANS ARE SUPPLEMENTED BY THE OCTOBER 2017 CONSTRUCTION STANDARD DETAILS, THE 2015 OVERHEAD SIGNAL STRUCTURE AND FOUNDATION STANDARD DRAWINGS, MASSDOT TRAFFIC MANAGEMENT PLANS AND DETAIL DRAWINGS, THE 1990 STANDARD DRAWINGS FOR SIGNS AND SUPPORTS, THE 1968 STANDARD DRAWINGS FOR TRAFFIC SIGNALS AND HIGHWAY LIGHTING, AND THE LATEST EDITION OF THE AMERICAN STANDARD FOR NURSERY STOCK.

**INDEX**

SHEET NO.	DESCRIPTION
1	TITLE SHEET & INDEX
2	LEGEND, ABBREVIATIONS AND PROJECT DESCRIPTION
3-5	TYPICAL SECTIONS
6-7	PARCEL SUMMARY SHEETS
8	LOCATION PLAN
9-14	PROPERTY PLANS

THE LAYOUT LINES, AS REPRESENTED ON THE PRELIMINARY RIGHT OF WAY PLANS, ARE BASED UPON AN INSTRUMENT SURVEY THAT MEETS 250 CMR 6.00 AND ARE SUITABLE TO BE USED FOR A RECORDABLE PLAN, AND MEET THE STANDARDS SET FORTH IN BOTH 250 CMR 6.01 AND 6.02.

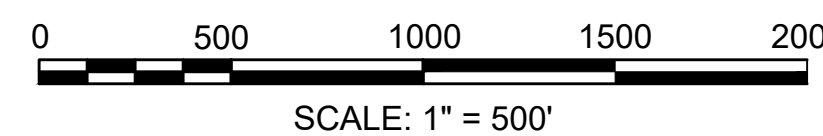
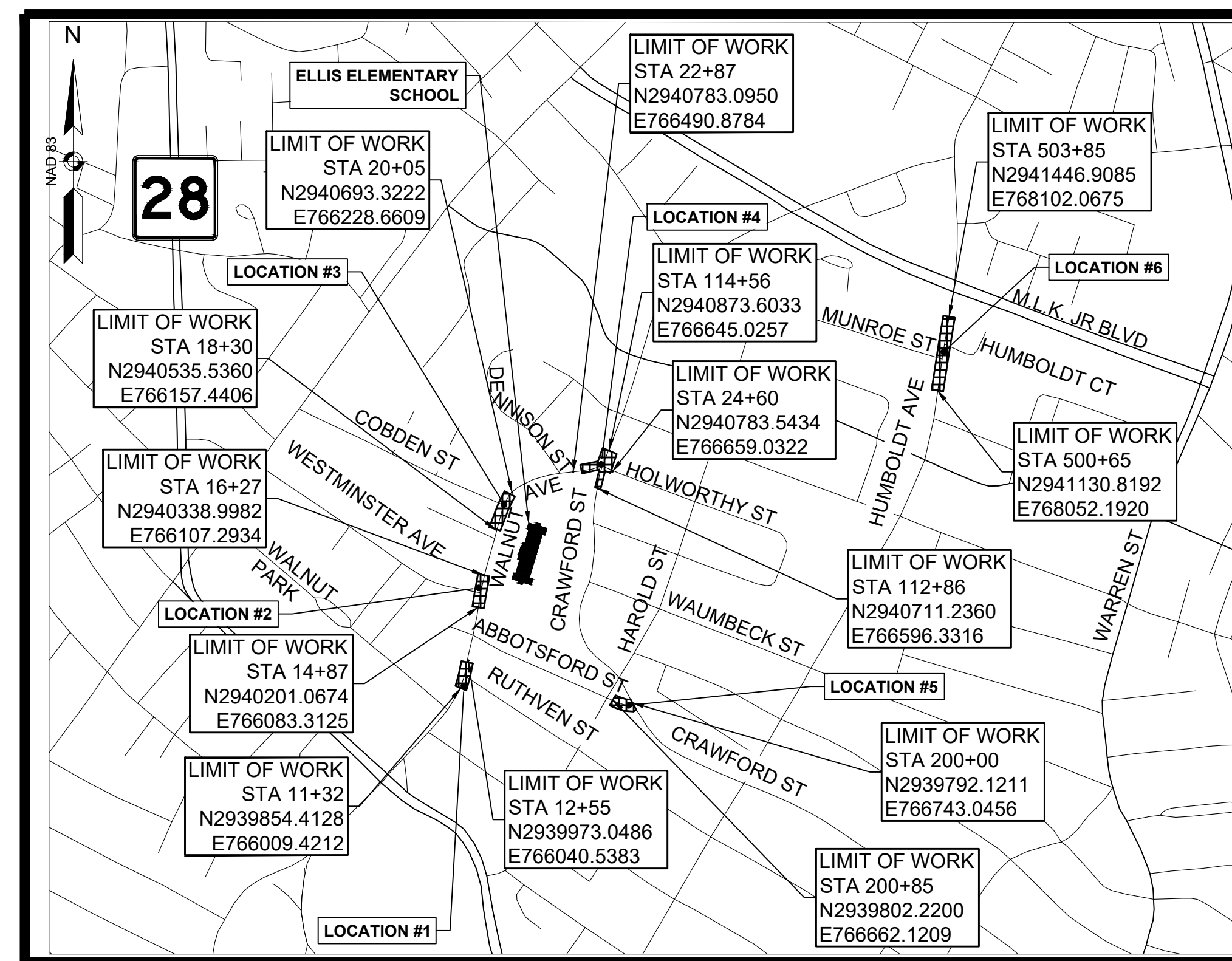


JEFFREY P. BRADFORD, PLS LIC. NO 41862  
FOR GREENMAN-PEDERSEN, INC.

2/22/23  
DATE

**BASE MAP NOTES**

- THE SURVEY BASE PLAN WAS PREPARED BY GREENMAN-PEDERSEN, INC. IN NOVEMBER, 2020 AND SUPPLEMENTED IN AUGUST 2022.
- THE MOST RECENT SITE VISIT WAS COMPLETED IN APRIL, 2022 TO VERIFY THAT THE EXISTING CONDITIONS SHOWN ON THE PLAN ARE THE CURRENT CONDITIONS IN THE FIELD.
- THE LAYOUT AND PROPERTY LINES SUBMITTED ON THE PLAN WERE CERTIFIED BY JEFFREY P. BRADFORD, A PLS IN DIRECT CHARGE AND SUPERVISION OF THE SURVEY BASEMAP.
- THE OWNERS HAVE BEEN CHECKED AND UPDATED AS OF JANUARY, 2023, PER REGISTRY OF DEEDS.
- THE PREQUALIFIED SURVEYOR UNDER THE S3 CATEGORY IS PARTICIPATING IN THE DEVELOPMENT OF THE ROW PLANS. GREENMAN-PEDERSEN, INC. HAS VERIFIED HIGHWAY LAYOUT BASELINES AND SIDELINES, VERIFIED MUNICIPAL LAYOUTS, VERIFIED THAT ABUTTERS PROPERTY LINES ARE CREATED BASED ON RECORD DEEDS AND PLANS, VERIFIED CURRENT ABUTTERS OWNERSHIP INFORMATION, VERIFIED EXISTING PERMANENT EASEMENTS, AND VERIFIED ANY OTHER ELEMENTS IN THE SURVEY BASE PLAN THAT AFFECTS DISPOSITIONS AND LAND ACQUISITIONS.



LENGTH OF PROJECT (WALNUT AVENUE) = 611.00 FEET = 0.116 MILES  
 LENGTH OF PROJECT (CRAWFORD STREET) = 285.00 FEET = 0.054 MILES  
 LENGTH OF PROJECT (ABBOTSFORD STREET) = 85.00 FEET = 0.016 MILES  
 LENGTH OF PROJECT (HUMBOLDT AVENUE) = 320.00 FEET = 0.061 MILES

DATE	DESCRIPTION	REV #
02-23-2023	REVISED 25% SUBMISSION NEW PARCELS: TE-9, TE-10, TE-11, TE-12, TE-13, TE-14, TE-15, TE-16, TE-17, TE-18 ALTERED PARCELS: 9-C, 10-C, 14-C, 15-C, TE-1 TE-2, TE-4, TE-6 DELETED PARCELS: 1-C, 3-C, 4-C, 7-C, 11-C, 12-C, 13-C, 16-C, TE-3, TE-5	1
03-15-2022	25% SUBMISSION	0



APPROVED

**TEC**  
The Engineering Corp

282 Merrimack St  
2nd Floor  
Lawrence, MA 01843  
978-794-1792

311 Main Street  
2nd Floor  
Worcester, MA 01608  
508-868-5104

169 Ocean Blvd  
PO Box 249  
Hampton, NH 03842  
603-601-8154

www.TheEngineeringCorp.com

CHIEF ENGINEER

DATE

**BOSTON  
ELLIS ELEMENTARY SCHOOL**

STATE	FED. AID PROJ. NO.	SHEET NO.	TOTAL SHEETS
MA		2	14
PROJECT FILE NO. 610537			

**PRELIMINARY RIGHT OF WAY  
LEGEND, ABBREVIATIONS AND  
PROJECT DESCRIPTION**

**GENERAL SYMBOLS**

EXISTING	PROPOSED	DESCRIPTION
		JERSEY BARRIER
		CATCH BASIN OR GUTTER INLET
		CATCH BASIN OR GUTTER INLET W/ CURB INLET
		FLAG POLE
		GAS PUMP
		MAIL BOX
		POST SQUARE
		POST CIRCULAR
		WELL
		ELECTRIC HANDHOLE
		FENCE GATE POST
		GAS GATE
		BORING HOLE
		MONITORING WELL
		TEST PIT
		HYDRANT
		LIGHT POLE
		COUNTY BOUND
		GPS POINT
		CABLE MANHOLE
		DRAINAGE MANHOLE
		ELECTRIC MANHOLE
		GAS MANHOLE
		MISC MANHOLE
		SEWER MANHOLE
		TELEPHONE MANHOLE
		WATER MANHOLE
		MASSACHUSETTS HIGHWAY BOUND
		MONUMENT
		STONE BOUND
		TOWN OR CITY BOUND
		TRAVERSE OR TRIANGULATION STATION
		TROLLEY POLE OR GUY POLE
		TRANSMISSION POLE
		UTILITY POLE W/ FIREBOX
		UTILITY POLE WITH DOUBLE LIGHT
		UTILITY POLE W / 1 LIGHT
		UTILITY POLE
		BUSH
		TREE
		STUMP
		SWAMP / MARSH
		WATER GATE
		WATER SHUTOFF/CURB STOP
		PARKING METER
		OVERHEAD CABLE/WIRE
		CURBING
		CONTOURS (ON-THE-GROUND SURVEY DATA)
		CONTOURS (PHOTOGRAMMETRIC DATA)
		UNDERGROUND DRAIN PIPE (DOUBLE LINE 24 INCH AND OVER)
		UNDERGROUND ELECTRIC DUCT (DOUBLE LINE 24 INCH AND OVER)
		UNDERGROUND GAS MAIN (DOUBLE LINE 24 INCH AND OVER)
		UNDERGROUND SEWER MAIN (DOUBLE LINE 24 INCH AND OVER)
		UNDERGROUND TELEPHONE DUCT (DOUBLE LINE 24 INCH AND OVER)
		UNDERGROUND WATER MAIN (DOUBLE LINE 24 INCH AND OVER)
		BALANCED STONE WALL
		GUARD RAIL - STEEL POSTS
		GUARD RAIL - WOOD POSTS
		CHAIN LINK OR METAL FENCE
		WOOD FENCE
		SEDIMENT CONTROL BARRIER
		TREE LINE
		EDGE OF PAVEMENT
		SAWCUT LINE
		TOP OR BOTTOM OF SLOPE
		LIMIT OF EDGE OF MICROMILLING AND OVERLAY
		BANK OF RIVER OR STREAM
		BORDER OF WETLAND
		100 FT WETLAND BUFFER
		200 FT RIVERFRONT BUFFER
		STATE HIGHWAY LAYOUT
		TOWN OR CITY LAYOUT
		COUNTY LAYOUT
		RAILROAD SIDELINE
		TOWN OR CITY BOUNDARY LINE
		PROPERTY LINE OR APPROXIMATE PROPERTY LINE
		EASEMENT

**TRAFFIC SYMBOLS**

EXISTING	PROPOSED	DESCRIPTION
		CONTROLLER CABINET, FOUNDATION
		CONTROLLER CABINET, FOUNDATION, CONC. PAD
		MAST ARM FOUNDATION (SCALE OF BLOCK = DIAMETER IN INCHES)
		MAST ARM (LENGTH NOTED)
		EMERGENCY PREEMPTION CONFIRMATION STROBE LIGHT
		VEHICULAR SIGNAL HEAD
		PEDESTRIAN SIGNAL HEAD
		MAST ARM OR TS POLE MOUNTED SIGN
		EMERGENCY PRE-EMPTION RECEIVER
		EMERGENCY PRE-EMPTION CONFIRMATION STROBE
		PEDESTRIAN PUSH BUTTON
		YAGI ANTENNA
		BICYCLE WIRE LOOP DETECTOR (SIZE AS NOTED)
		WIRE LOOP DETECTOR (SIZE AND TYPE NOTED)
		TRAFFIC SIGN (1 POST)
		TRAFFIC SIGN (2 POST)
		PULL BOX 12"x12" (OR AS NOTED)
		ELECTRIC HANDHOLE 12"x24" (OR AS NOTED)
		TRAFFIC SIGNAL CONDUIT
		RECTANGULAR RAPID FLASHING BEACON (RRFB)

**PAVEMENT MARKINGS SYMBOLS**

EXISTING	PROPOSED	DESCRIPTION
		PAVEMENT ARROW - WHITE
		LEGEND "ONLY" - WHITE
		BIKE LANE LEGEND - WHITE
		SHARROW
		STOP LINE
		CROSSWALK
		SOLID WHITE LINE
		SOLID YELLOW LINE
		BROKEN WHITE LINE
		BROKEN YELLOW LINE
		6" DOTTED WHITE LINE (3' LINE W/ 9' GAP)
		6" DOTTED YELLOW LINE (3' LINE W/ 9' GAP)
		6" DOTTED WHITE LINE EXTENSION (2' LINE W/ 6' GAP)
		6" DOTTED YELLOW LINE EXTENSION (2' LINE W/ 6' GAP)
		DOUBLE WHITE LINE
		DOUBLE YELLOW LINE

**PROJECT DESCRIPTION:**  
THE PROPOSED SAFE ROUTES TO SCHOOL PROJECT INCLUDES PEDESTRIAN AND TRAFFIC CALMING IMPROVEMENTS AT SIX ISOLATED INTERSECTIONS IN THE VICINITY OF THE DAVID A. ELLIS ELEMENTARY SCHOOL.

THE PROPOSED IMPROVEMENTS INCLUDE THE CONSTRUCTION OF RAISED INTERSECTIONS ALONG WALNUT AVE AT RUTHVEN STREET, WESTMINSTER AVENUE, AND COBDEN STREET. THE WORK AT THESE INTERSECTIONS ALSO INCLUDES SIDEWALK RECONSTRUCTION, ADA/AAB COMPLIANT LEVEL LANDINGS AND CROSSINGS, MUTCD COMPLIANT SIGNAGE AND STRIPING, AND MINOR DRAINAGE IMPROVEMENTS.

THE PROPOSED IMPROVEMENTS AT THE INTERSECTION OF WALNUT AVE AND CRAWFORD STREET INCLUDE THE CONSTRUCTION OF CURB BUMPOUTS, SIDEWALK RECONSTRUCTION, ADA/AAB COMPLIANT PEDESTRIAN CURB RAMPS AND CROSSINGS, MUTCD COMPLIANT SIGNAGE AND STRIPING, AND MINOR DRAINAGE IMPROVEMENTS. AT THE PROPOSED IMPROVEMENTS AT THE INTERSECTION OF ABBOTSFORD STREET AND CRAWFORD ROAD INCLUDE THE CONSTRUCTION OF A CURB BUMPOUT TO REALIGN THE INTERSECTION AND REDUCE PEDESTRIAN CROSSING DISTANCES. THE PROPOSED WORK ALSO INCLUDES SIDEWALK RECONSTRUCTION, ADA/AAB COMPLIANT PEDESTRIAN CURB RAMPS AND THE CONSTRUCTION OF A NEW LANDSCAPED AREA.

THE PROPOSED IMPROVEMENTS ALONG HUMBOLDT AVE AT MUNROE STREET AND HUMBOLDT COURT INCLUDE THE CONSTRUCTION OF MEDIAN ISLANDS WITH PEDESTRIAN REFUGES, AND THE CONSTRUCTION OF RAISED CROSSWALKS ON MUNROE STREET AND HUMBOLDT COURT. THE PROPOSED WORK ALSO INCLUDES SIDEWALK RECONSTRUCTION, ADA/AAB COMPLIANT PEDESTRIAN CURB RAMPS AND MUTCD COMPLIANT SIGNAGE AND STRIPING.

**ABBREVIATIONS**

GENERAL	
AADT	ANNUAL AVERAGE DAILY TRAFFIC
ABAN	ABANDON
ADJ	ADJUST
APPROX.	APPROXIMATE
A.C.	ASPHALT CONCRETE
ACCM PIPE	ASPHALT COATED CORRUGATED METAL PIPE
ALT	ALTERATION
BIT.	BITUMINOUS
BC	BOTTOM OF CURB
BD.	BOUND
BL	BASELINE
BLDG	BUILDING
BM	BENCHMARK
BO	BY OTHERS
BOS	BOTTOM OF SLOPE
BR.	BRIDGE
CB	CATCH BASIN
CBCI	CATCH BASIN WITH CURB INLET
CC	CEMENT CONCRETE
CCM	CEMENT CONCRETE MASONRY
CEM	CEMENT
CI	CURB INLET
CIP	CAST IRON PIPE
CLF	CHAIN LINK FENCE
CL	CENTERLINE
CMP	CORRUGATED METAL PIPE
CSP	CORRUGATED STEEL PIPE
CO.	COUNTY
CONC	CONCRETE
CONT	CONTINUOUS
CONST	CONSTRUCTION
CR GR	CROWN GRADE
DHV	DESIGN HOURLY VOLUME
DI	DROP INLET
DIA	DIAMETER
DIP	DUCTILE IRON PIPE
DND	DO NOT DUMP
DW	STEADY DON'T WALK - PORTLAND ORANGE
DWY	DRIVEWAY
ECC	ECCENTRIC
ELEV (or EL.)	ELEVATION
EMB	EMBANKMENT
EOP	EDGE OF PAVEMENT
EXIST (or EX)	EXISTING
EXC	EXCAVATION
F&C	FRAME AND COVER
F&G	FRAME AND GRATE
FDN.	FOUNDATION
FLDSTN	FIELDSTONE
GAR	GARAGE
GC	GRANITE CURB
GD	GROUND
GG	GAS GATE
GI	GUTTER INLET
GIP	GALVANIZED IRON PIPE
GRAN	GRANITE
GRAV	GRAVEL
GRD	GUARD
HDW	HEADWALL
HMA	HOT MIX ASPHALT
HOR	HORIZONTAL
HYD	HYDRANT
INV	INVERT
JCT	JUNCTION
L	LENGTH OF CURVE
LB	LEACH BASIN
LL	LEVEL LANDING
LO	LAYOUT
LOG	LIMIT OF GRADING
LP	LIGHT POLE
L&S	LOAM AND SEED
LT	LEFT
MAX	MAXIMUM
MB	MAILBOX
MH	MANHOLE

**ABBREVIATIONS (cont.)**

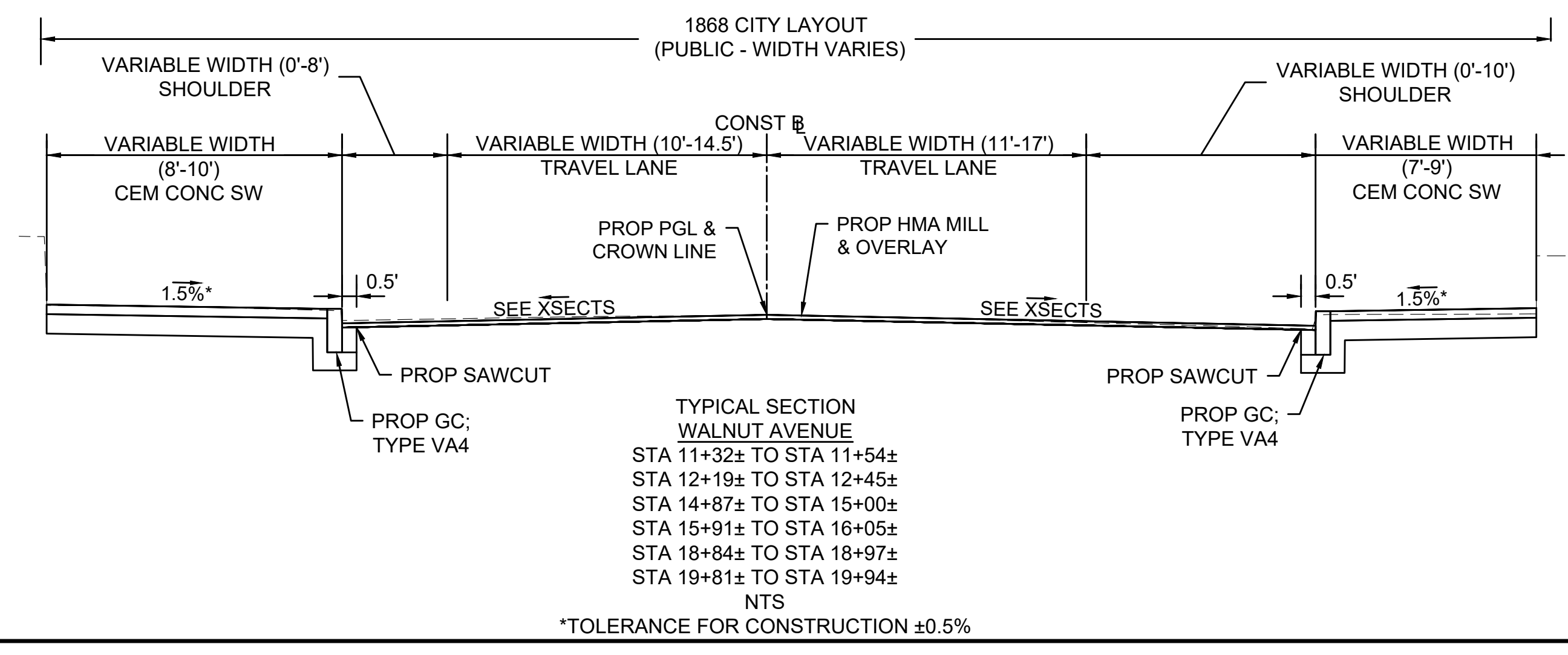
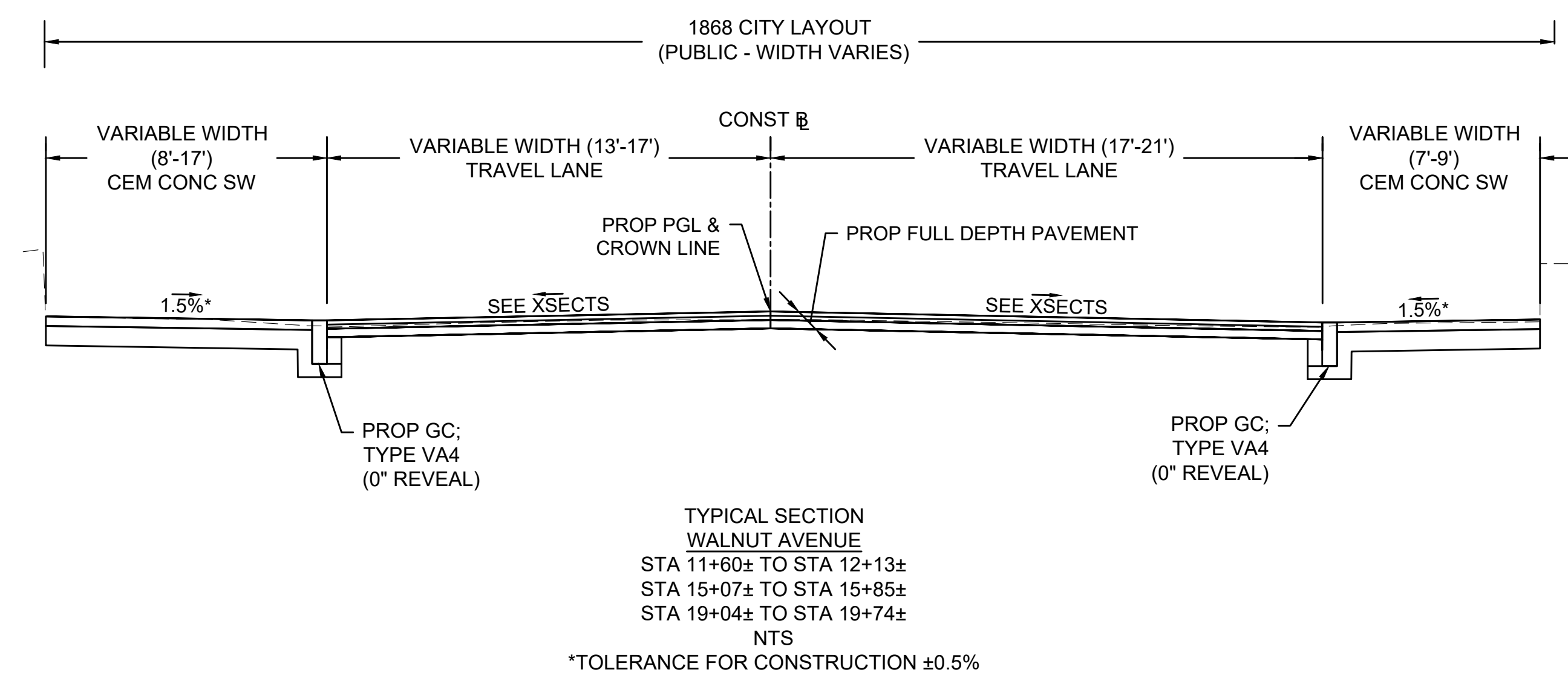
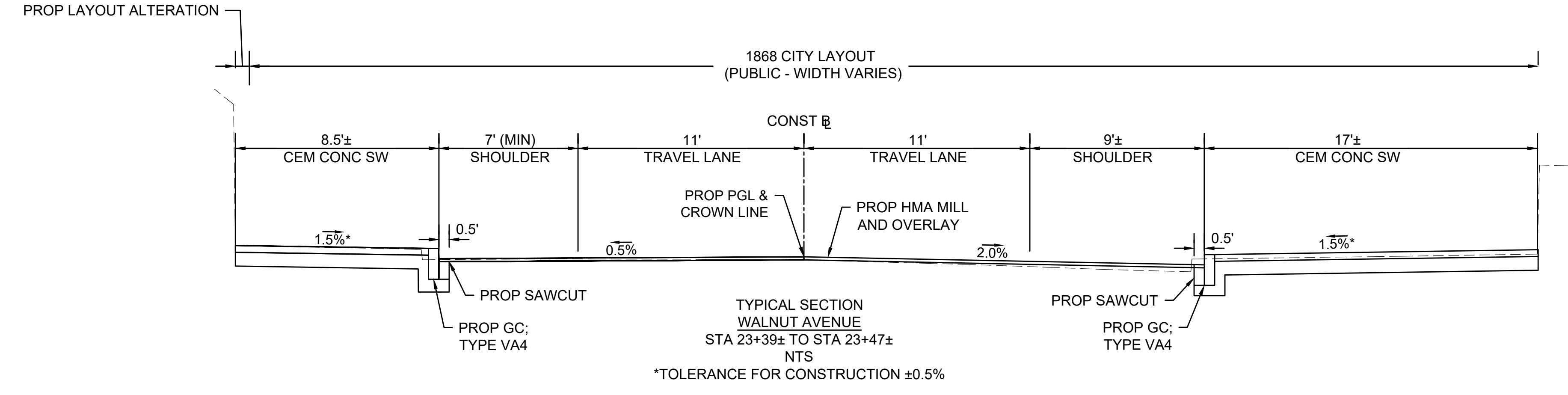
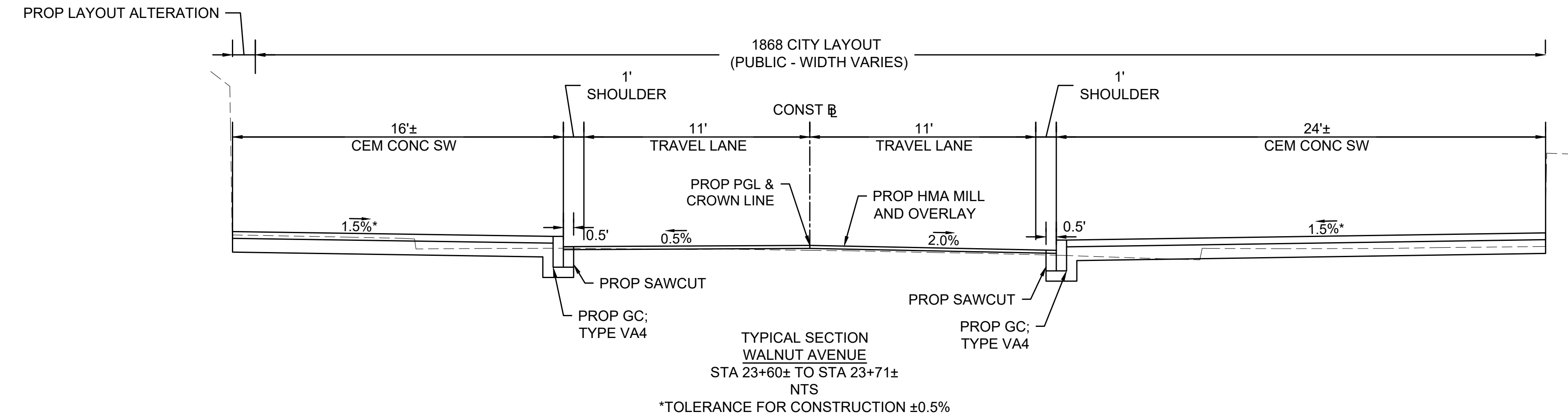
GENERAL	
MHB	MASSACHUSETTS HIGHWAY BOUND
MIN	MINIMUM
NIC	NOT IN CONTRACT
NO.	NUMBER
PC	POINT OF CURVATURE
PCC	POINT OF COMPOUND CURVATURE
P.G.L.	PROFILE GRADE LINE
PI	POINT OF INTERSECTION
POC	POINT ON CURVE
POT	POINT ON TANGENT
PRC	POINT OF REVERSE CURVATURE
PROJ	PROJECT
PROP	PROPOSED
PSB	PLANTABLE SOIL BORROW
PT	POINT OF TANGENCY
PVC	POINT OF VERTICAL CURVATURE
PVI	POINT OF VERTICAL INTERSECTION
PVT	POINT OF VERTICAL TANGENCY
PVMT	PAVEMENT
PWW	PAVED WATERWAY
R	RADIUS OF CURVATURE
R&D	REMOVE AND DISPOSE
RCP	REINFORCED CONCRETE PIPE
RD	ROAD
RDWY	ROADWAY
REM	REMOVE
RET	RETAIN
RET WALL	RETAINING WALL
ROW	RIGHT OF WAY
RR	RAILROAD
RRFB	RECTANGULAR RAPID FLASHING BEACON
R&R	REMOVE AND RESET
R&S	REMOVE AND STACK
RT	RIGHT
SB	STONE BOUND
SHLD	SHOULDER
SMH	SEWER MANHOLE
ST	STREET
STA	STATION
SSD	STOPPING SIGHT DISTANCE
SHLO	STATE HIGHWAY LAYOUT LINE
SW	SIDEWALK
T	TANGENT DISTANCE OF CURVE/TRUCK %
TAN	TANGENT
TEMP	TEMPORARY
TC	TOP OF CURB
TOS	TOP OF SLOPE
TYP	TYPICAL
UP	UTILITY POLE
VAR	VARIES
VERT	VERTICAL
VC	VERTICAL CURVE
WCR	WHEEL CHAIR RAMP
WG	WATER GATE
WIP	WROUGHT IRON PIPE
WM	WATER METER/WATER MAIN
X-SECT	CROSS SECTION



**BOSTON  
ELLIS ELEMENTARY SCHOOL**

STATE	FED. AID PROJ. NO.	SHEET NO.	TOTAL SHEETS
MA		3	14

PROJECT FILE NO. 610537  
**PRELIMINARY RIGHT OF WAY  
TYPICAL SECTIONS - 1 OF 3**



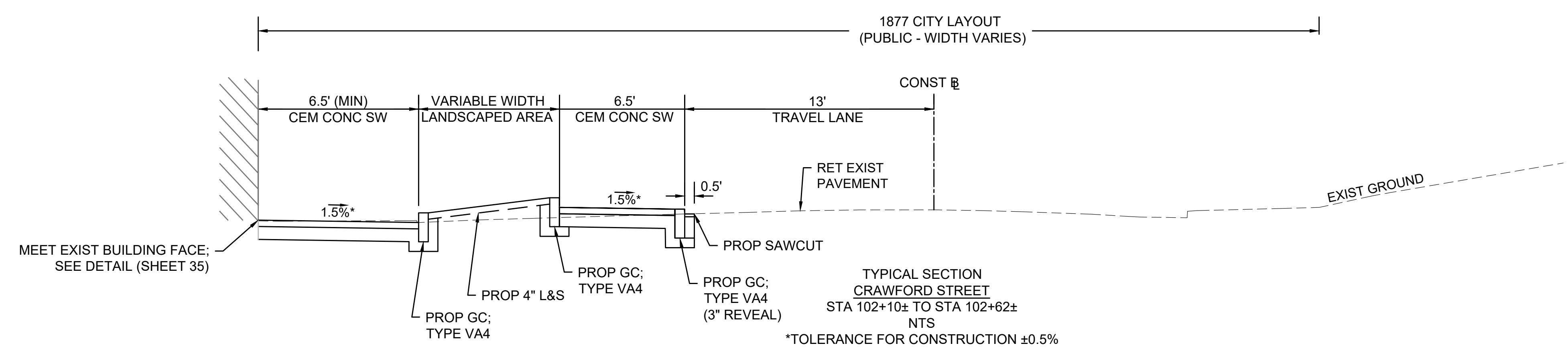
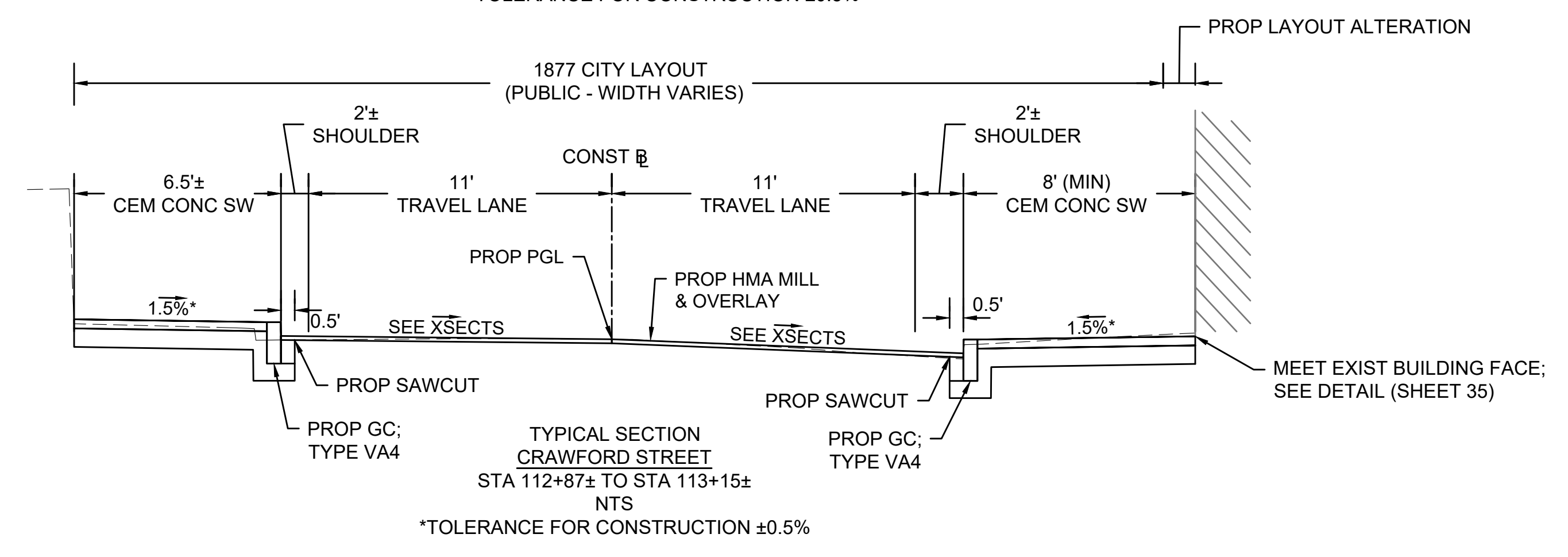
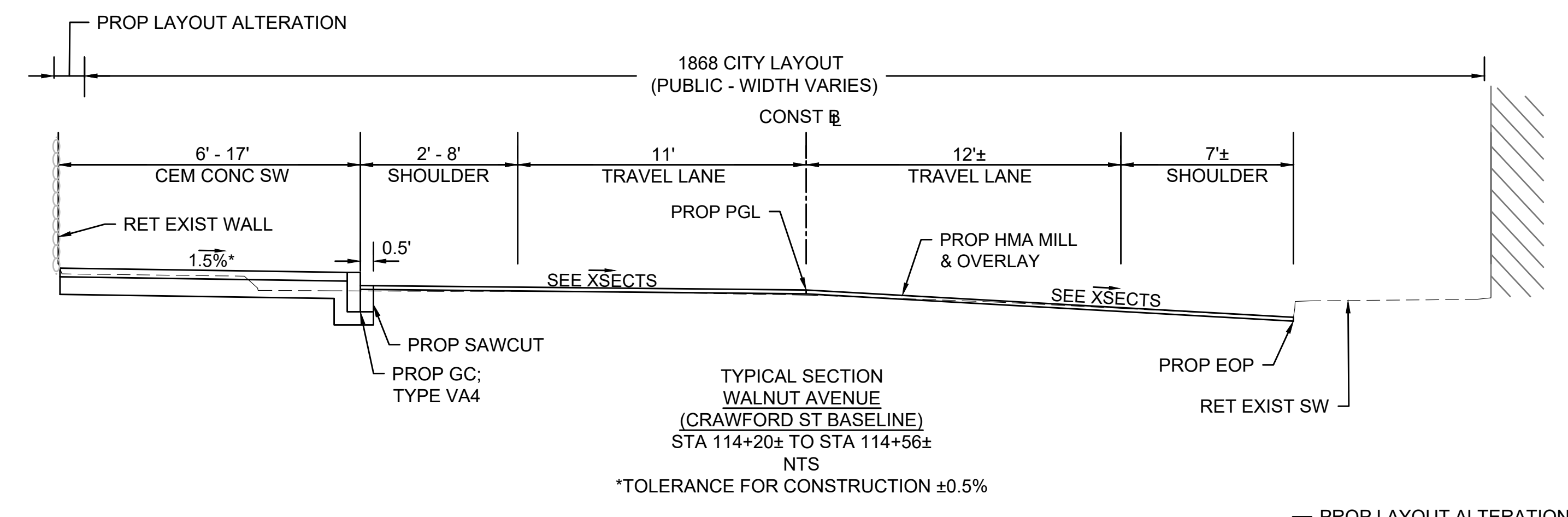
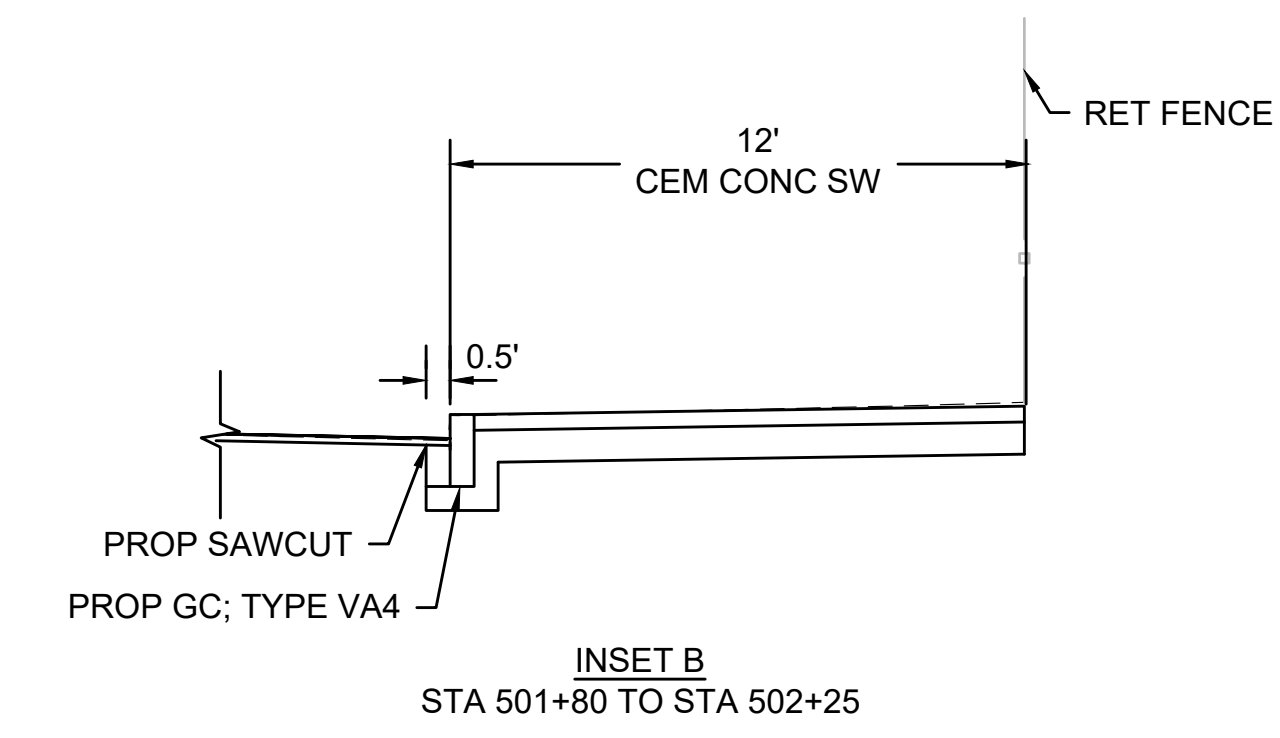
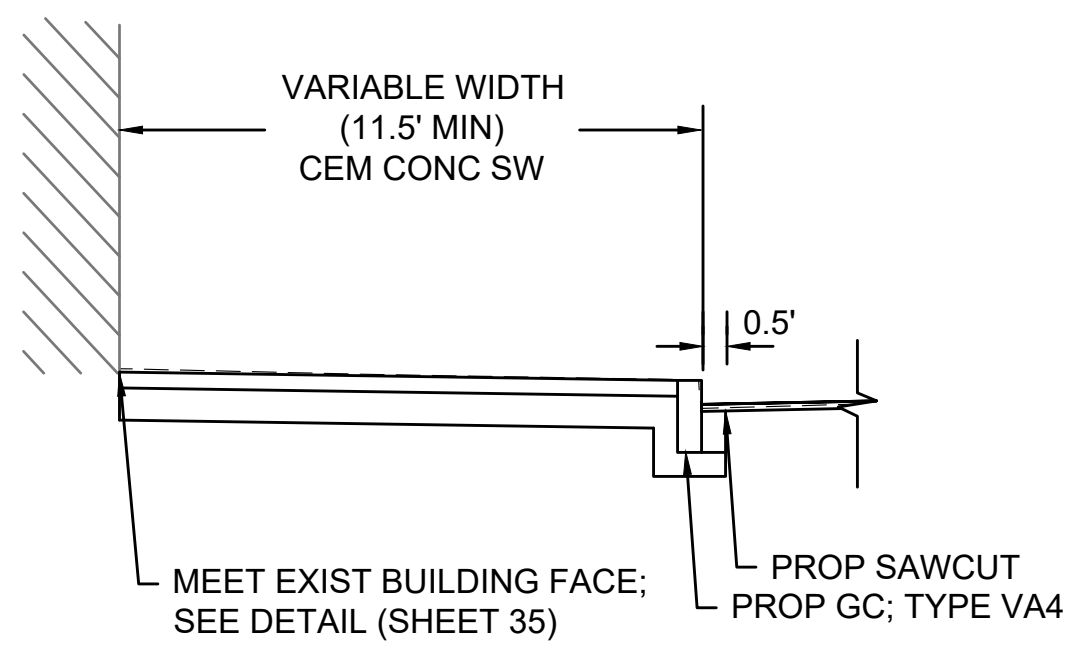
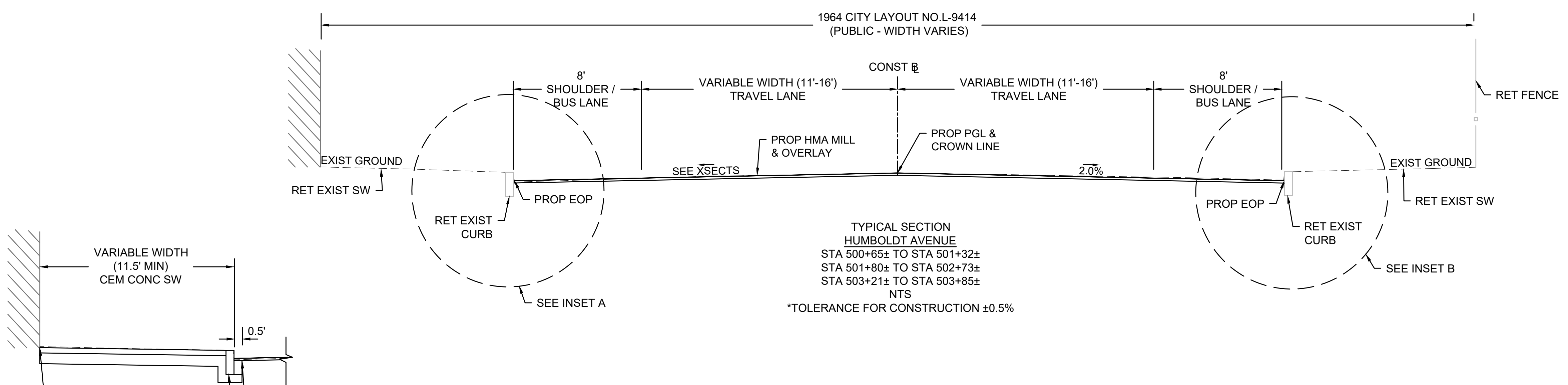
**BOSTON  
ELLIS ELEMENTARY SCHOOL**

STATE	FED. AID PROJ. NO.	SHEET NO.	TOTAL SHEETS
MA		4	14

PROJECT FILE NO. 610537

**PRELIMINARY RIGHT OF WAY  
TYPICAL SECTIONS - 2 OF 3**

610537\_RW3\_TYPICAL SECTIONS.DWG Plotted on 22-Feb-2023 8:39 AM

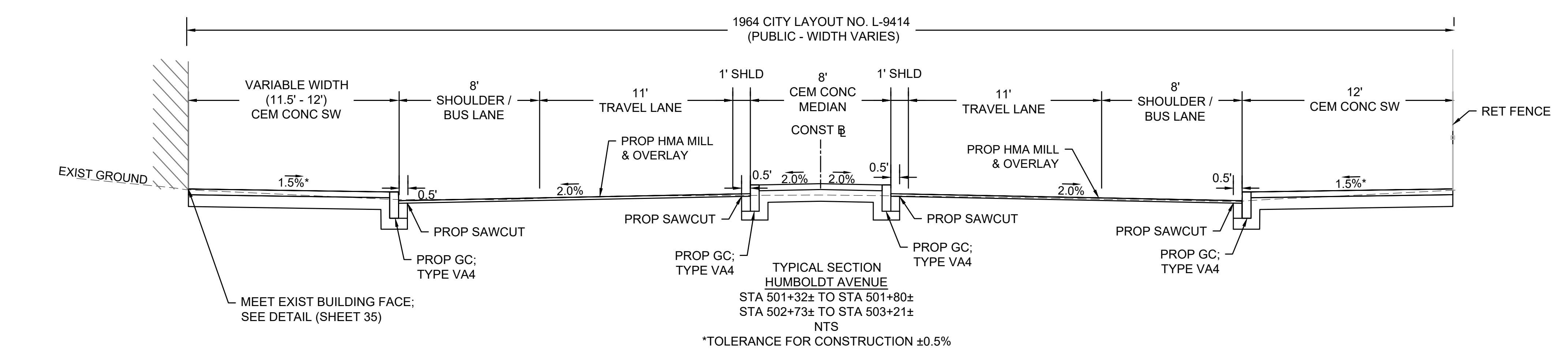
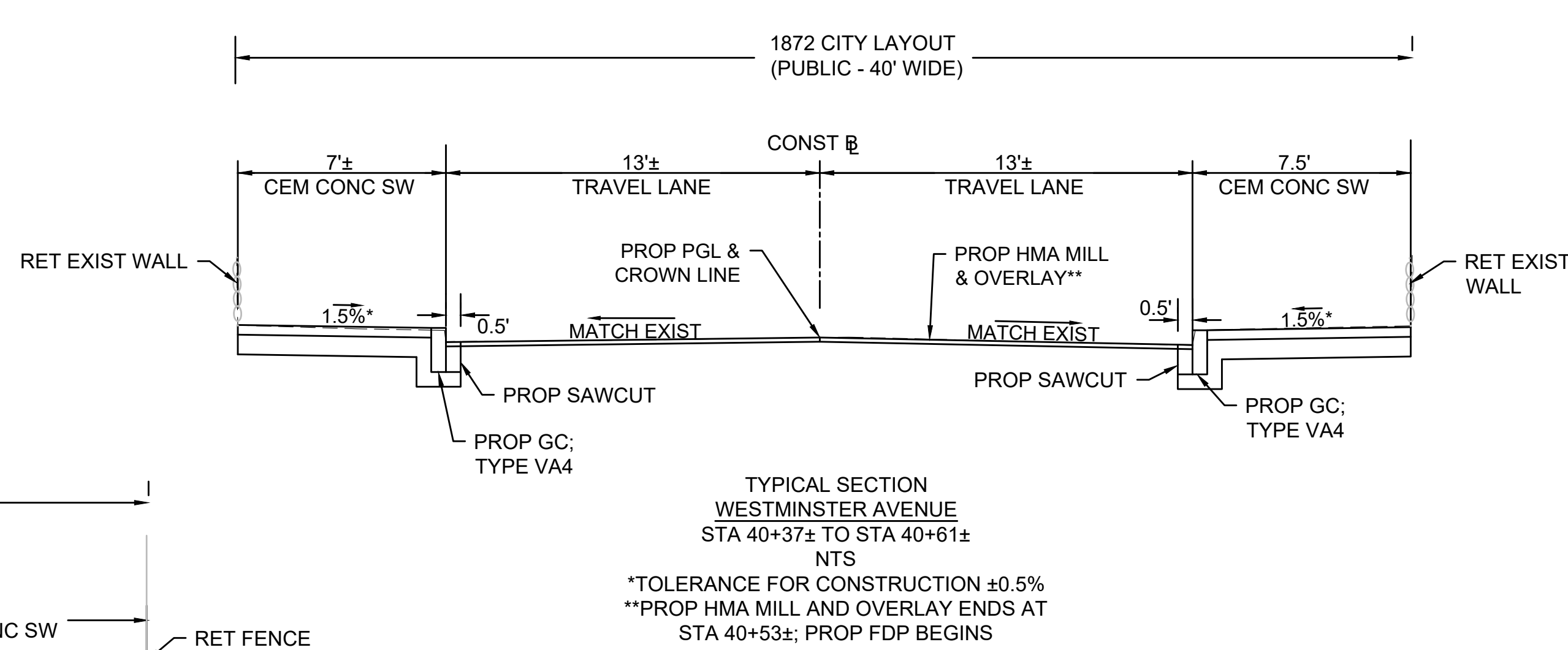
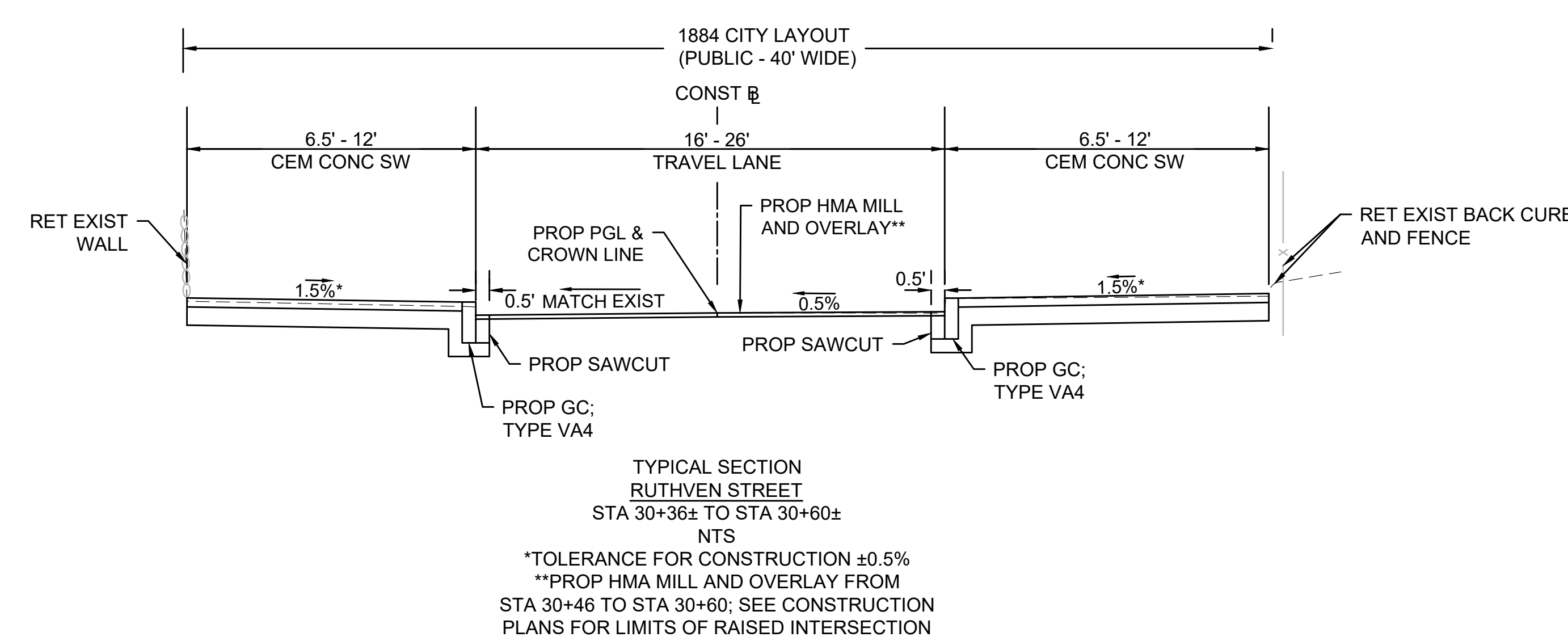
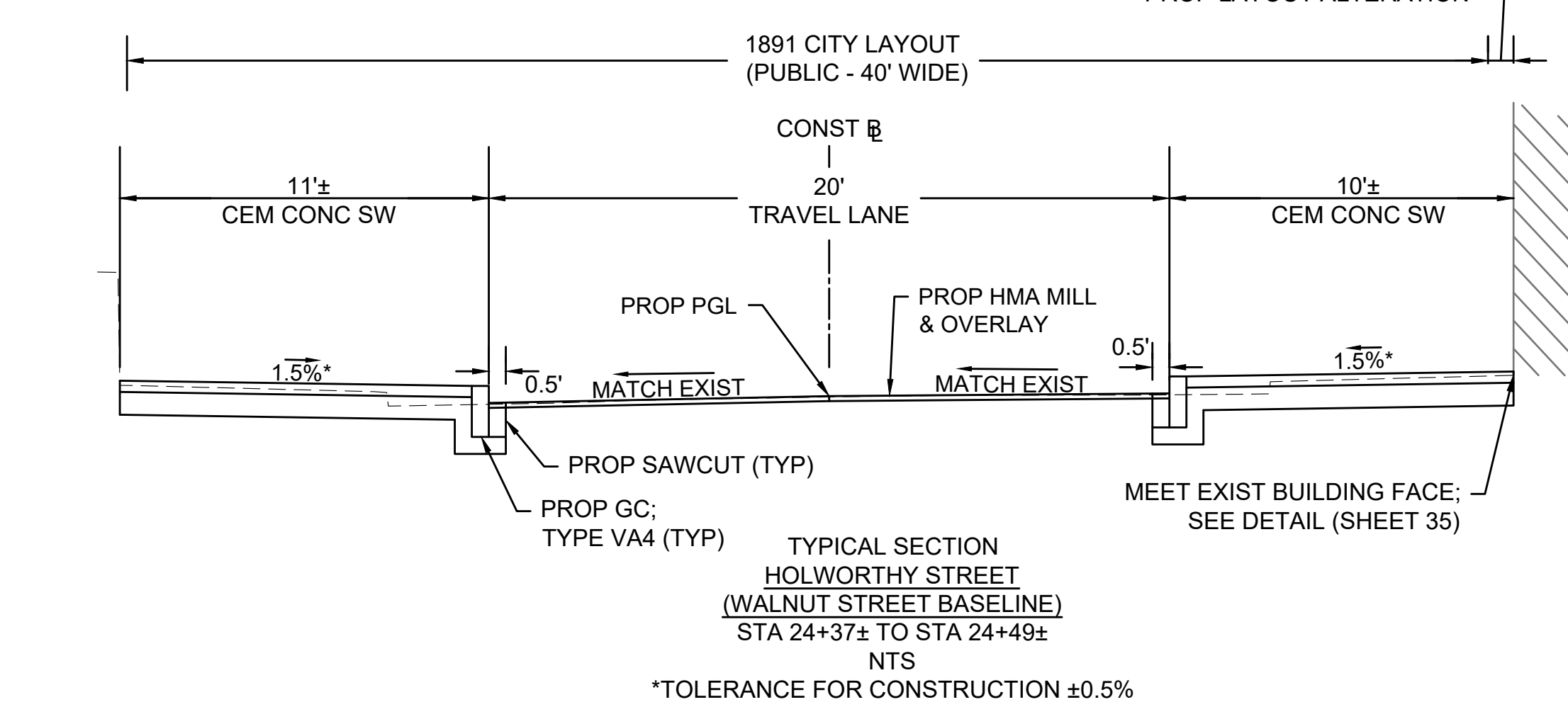
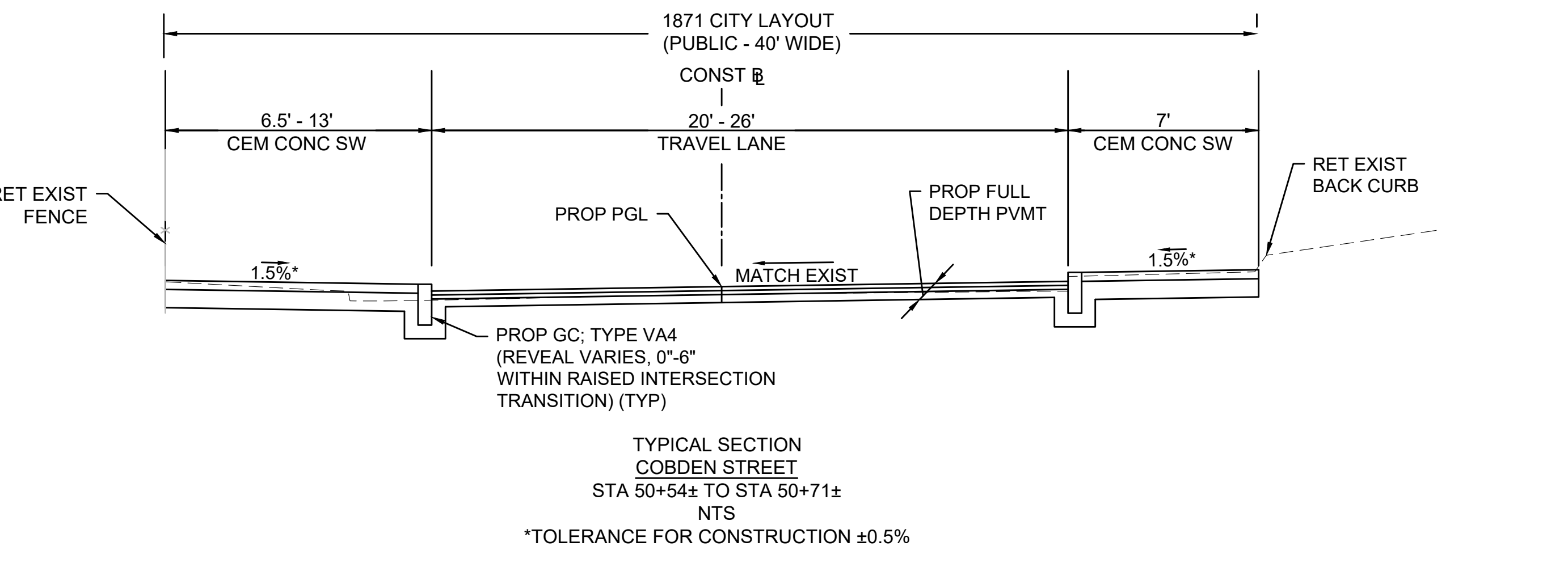
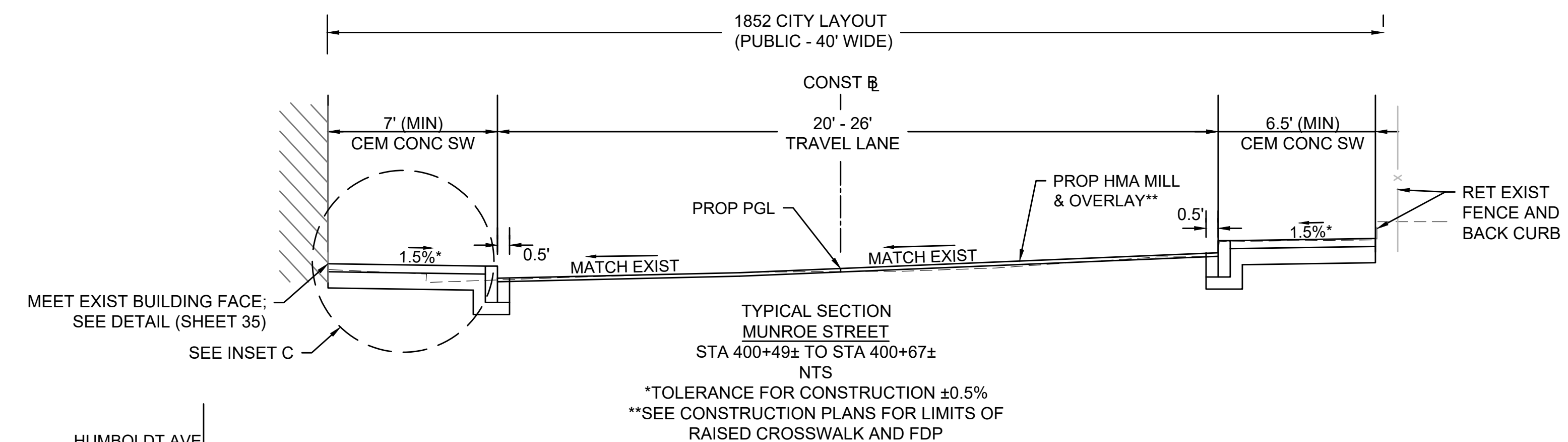
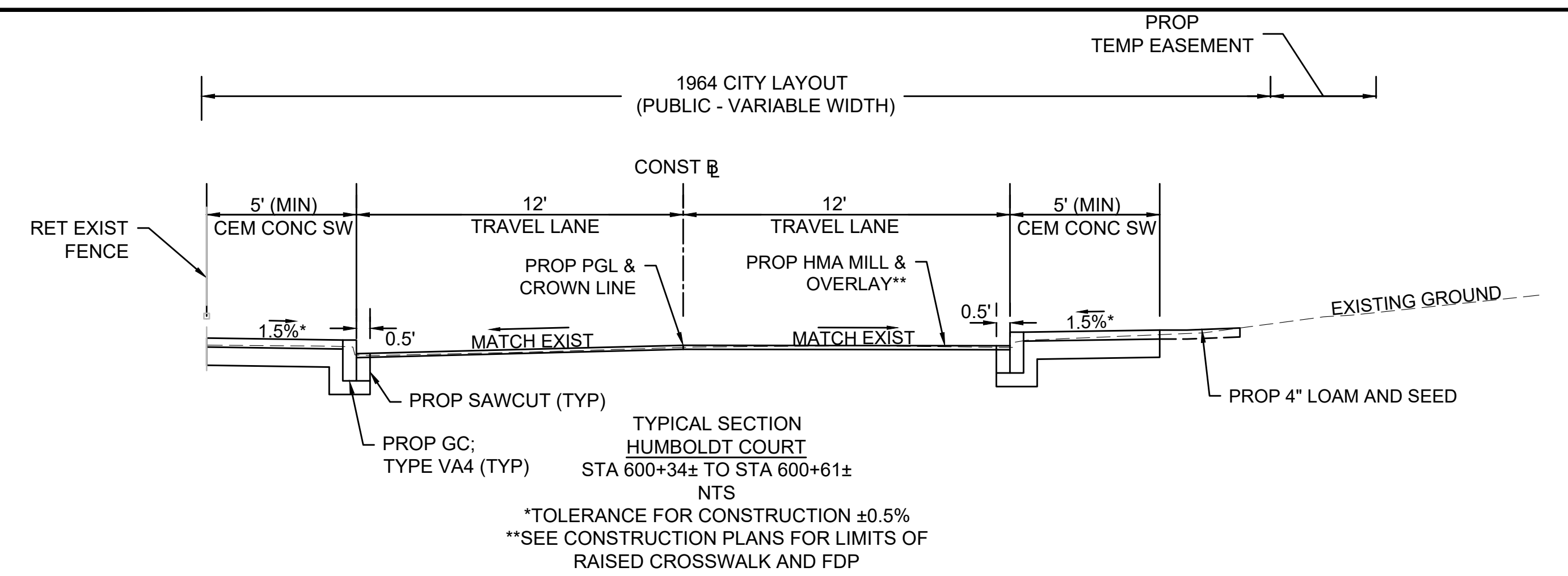


MEET EXIST BUILDING FACE;  
SEE DETAIL (SHEET 35)

**BOSTON  
ELLIS ELEMENTARY SCHOOL**

STATE	FED. AID PROJ. NO.	SHEET NO.	TOTAL SHEETS
MA		5	14

PROJECT FILE NO. 610537  
**PRELIMINARY RIGHT OF WAY  
TYPICAL SECTIONS - 3 OF 3**



**BOSTON  
ELLIS ELEMENTARY SCHOOL**

STATE	FED. AID PROJ. NO.	SHEET NO.	TOTAL SHEETS
MA		6	14
PROJECT FILE NO.		610537	

**PRELIMINARY RIGHT OF WAY  
PARCEL SUMMARY SHEETS - 1 OF 2**

PROJECT TOTALS			
AFFECTED PROPERTIES	FEE TAKINGS	PERMANENT EASEMENTS	TEMPORARY EASEMENTS
16	8	0	16

PARCEL NO.	PLAN SHEET NO.	TITLEHOLDER	TITLE REFERENCE				AREA (S.F. +/-)						TOTAL PROPERTY AREA (S.F.)	FRONTAGE ON ROW PLAN (FT.)	PROPERTY ADDRESS	REMARKS	LAND RESTRICTION FROM THE DEED
			DEED BOOK	PAGE NO.	LCC NO.	CERT NO.	TAKEN		EASEMENT		TOTAL TAKEN	REMAINING					
							CITY	STATE	TYPE	AREA							
2-C	9	CAROL I. SILVA	7588	43			57			57	5,805	5,862	143	346 WALNUT AVENUE	SIDEWALK		
5-C	9	WILSHIRE WESTMINSTER LLC	60258	8			3			3	120,539	120,542	830	30-108 WESTMINSTER AVENUE	SIDEWALK		
6-C	10	ALTON L. JOHNSON AND DOROTHY L. JOHNSON	8027	562			21			21	10,232	10,253	195	297-297A WALNUT AVENUE	SIDEWALK		
TE-4	10	ALTON L. JOHNSON AND DOROTHY L. JOHNSON	8027	562											ACCESS FOR SIDEWALK RECONSTRUCTION		
8-C	11	CITY OF BOSTON (CITY COUNCIL)	15409	105			11			11	6,624	6,635	57	275 WALNUT AVENUE	SIDEWALK		
TE-7	14	CITY OF BOSTON (CITY COUNCIL)	8917	302									26	61 HUMBOLDT AVENUE	GRADING (MAX 3:1), LOAM & SEED		
TE-8	14	CITY OF BOSTON (CITY COUNCIL)	8917	302									26	63 HUMBOLDT AVENUE	GRADING (MAX 3:1), LOAM & SEED		
9-C	11 & 12	WILLIAM F. PRIDGEN AND WILLIAM B. PRIDGEN	28682	306			41			41	8,194	8,235	61	273 WALNUT AVENUE	SIDEWALK		
TE-13	11 & 12	WILLIAM F. PRIDGEN AND WILLIAM B. PRIDGEN	28682	306											CEMENT CONCRETE WALK RECONSTRUCTION		
10-C	11	CITY OF BOSTON (SCHOOL DEPARTMENT)	4274	309			28			28	39,099	39,127	552	HARRISHOF STREET	SIDEWALK		
TE-14	11 & 12	CITY OF BOSTON (SCHOOL DEPARTMENT)	4274	309											CEMENT CONCRETE WALK RECONSTRUCTION		
14-C	11 & 12	163-165 CRAWFORD STREET REALTY TRUST	38665	143			68			68	8,666	8,734	195	163-165 CRAWFORD STREET	SIDEWALK AND CURB RAMP		
TE-15	11 & 12	163-165 CRAWFORD STREET REALTY TRUST	38665	143											SIDEWALK AND WALK RECONSTRUCTION		
TE-16	11 & 12	163-165 CRAWFORD STREET REALTY TRUST	38665	143											SIDEWALK AND WALK RECONSTRUCTION		
TE-17	11 & 12	163-165 CRAWFORD STREET REALTY TRUST	38665	143											SIDEWALK AND WALK RECONSTRUCTION		
TE-18	11 & 12	163-165 CRAWFORD STREET REALTY TRUST	38665	143											SIDEWALK AND WALK RECONSTRUCTION		
15-C	14	MALIK AND ELVA LEE ABDAL-KHALLAQ, LLC	52632	84			14			14	1,284	1,298	82	67 HUMBOLDT AVENUE	SIDEWALK		
TE-11	14	MALIK AND ELVA LEE ABDAL-KHALLAQ, LLC	52632	84											SIDEWALK AND FRONT WALK RECONSTRUCTION		

**BOSTON  
ELLIS ELEMENTARY SCHOOL**

STATE	FED. AID PROJ. NO.	SHEET NO.	TOTAL SHEETS
MA		7	14
PROJECT FILE NO.		610537	

**PRELIMINARY RIGHT OF WAY  
PARCEL SUMMARY SHEETS - 2 OF 2**

PARCEL NO.	PLAN SHEET NO.	TITLEHOLDER	TITLE REFERENCE				AREA (S.F. +/-)						TOTAL PROPERTY AREA (S.F.)	FRONTAGE ON ROW PLAN (FT.)	PROPERTY ADDRESS	REMARKS	LAND RESTRICTION FROM THE DEED
			DEED BOOK	PAGE NO.	LCC NO.	CERT NO.	TAKEN		EASEMENT		TOTAL TAKEN	REMAINING					
							CITY	STATE	TYPE	AREA							
TE-1	9	BETTY A. JOHNSON	52596	282										129	31 HILTON TERRACE	GRADING (MAX 3:1), LOAM & SEED	
TE-2	9	BOSTON PLANNING & DEVELOPMENT AGENCY	7820	545										221	WALNUT AVENUE	SIDEWALK RECONSTRUCTION	ARTICLE 97
TE-6	14	MARKSDALE GARDENS COOPERATIVE CORPORATION	11231	46										2,036	40-54 HAZELWOOD COURT	GRADING (MAX 3:1), WALKWAY RECONSTRUCTION	
TE-9	14	71-73 HUMBOLDT AVENUE, LLC	23983	131										64	71-73 HUMBOLDT AVENUE	GRADING (MAX 3:1), LOAM & SEED	
TE-10	14	IRVING L. FINEMANN	8931	384										24	59 HUMBOLDT AVENUE	GRADING (MAX 3:1), LOAM & SEED	
TE-12	14	SHARIF A. ABDAL-KHALLAQ	10126	242										27	65 HUMBOLDT AVENUE	SIDEWALK AND FRONT WALK RECONSTRUCTION	

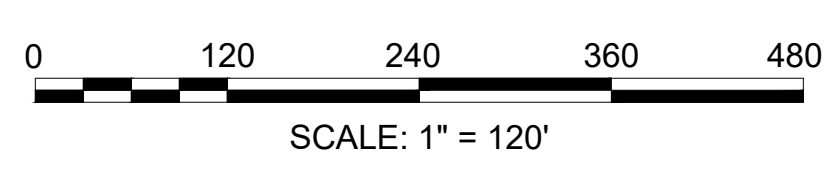
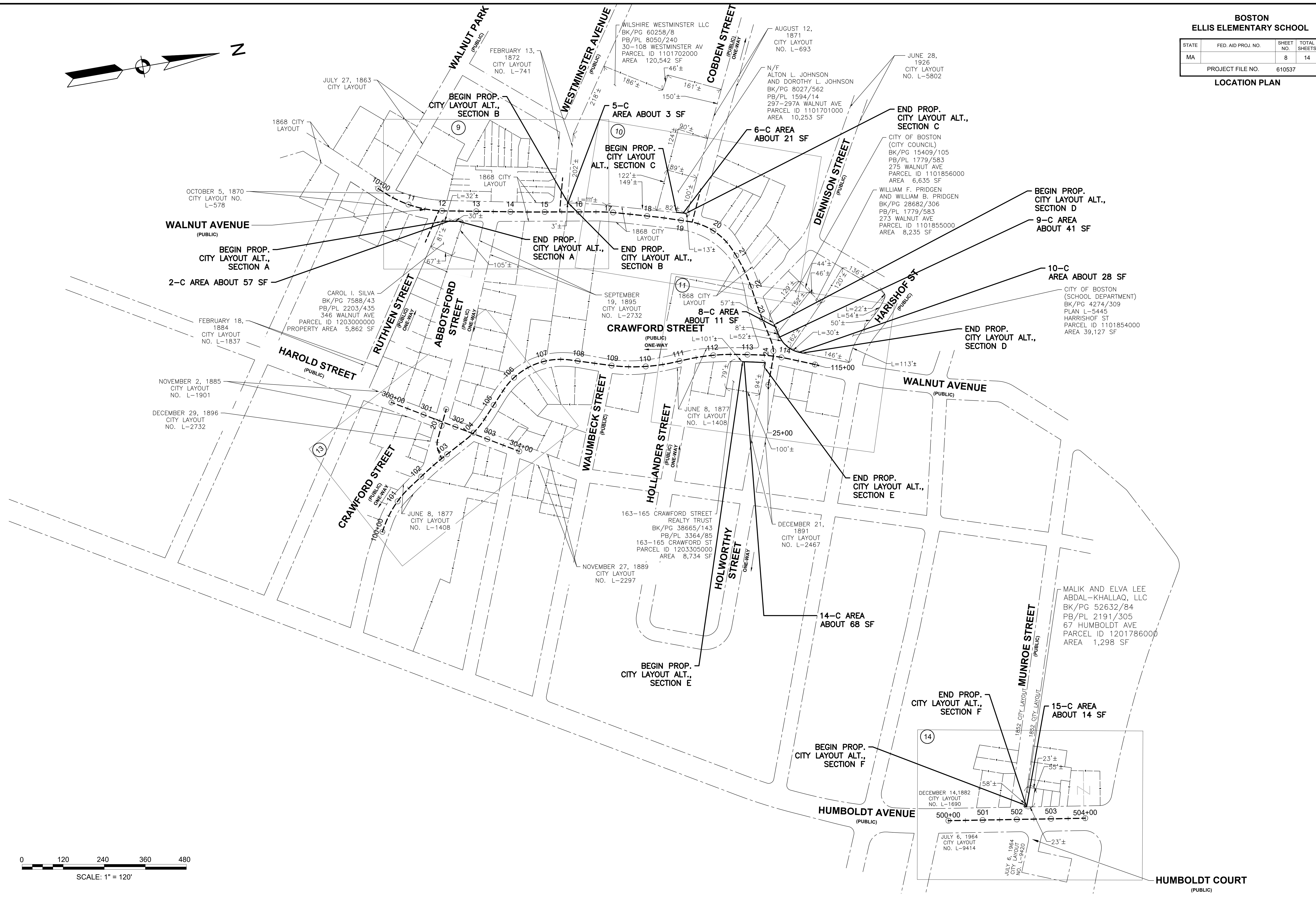
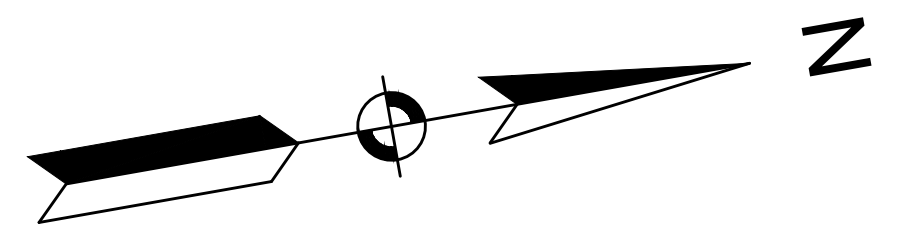


**BOSTON  
ELLIS ELEMENTARY SCHOOL**

STATE	FED. AID PROJ. NO.	SHEET NO.	TOTAL SHEETS
MA		8	14
PROJECT FILE NO.		610537	

**LOCATION PLAN**

610537\_RW5\_(LOCATION PLAN).DWG Plotted on 22-Feb-2023 8:45 AM



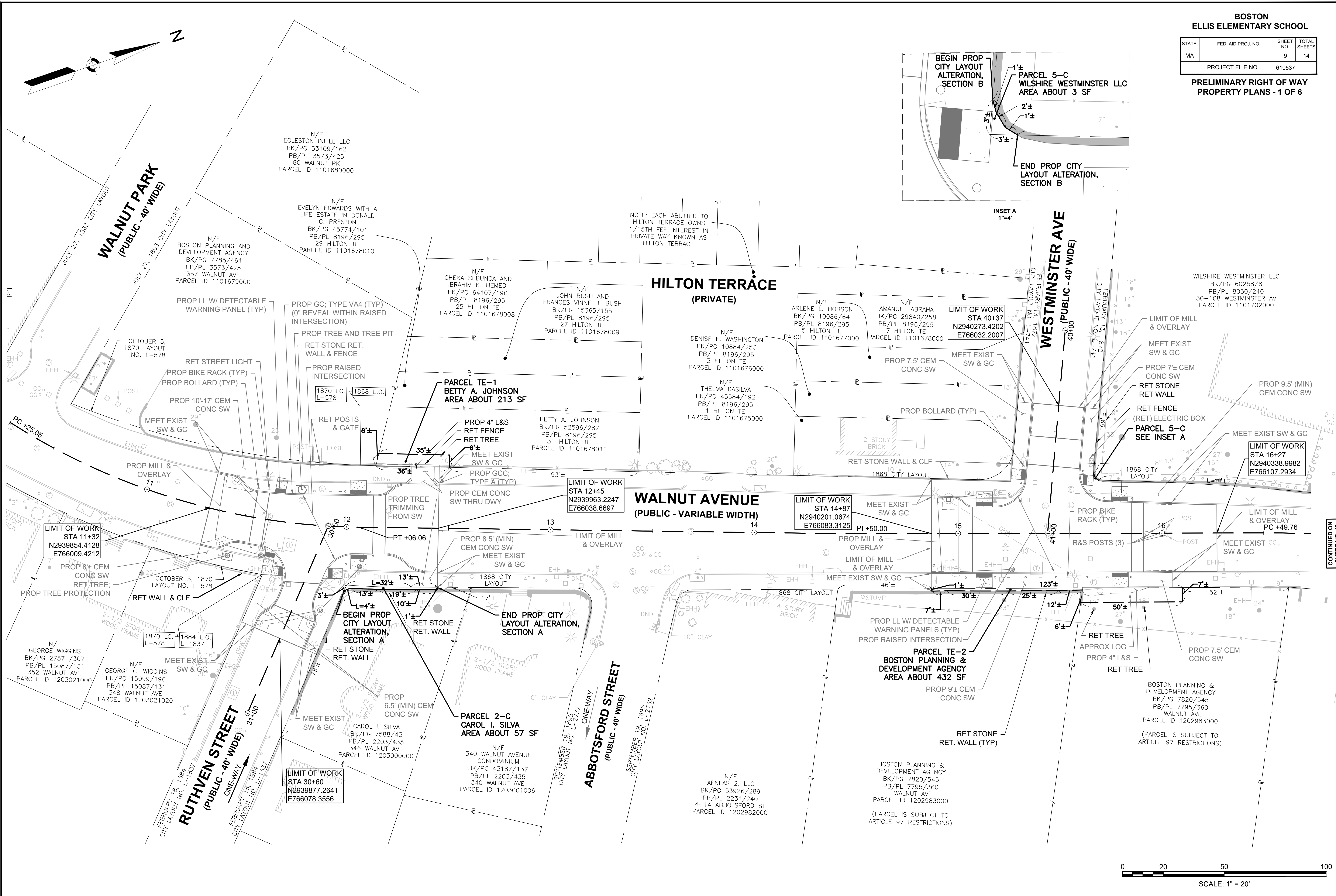
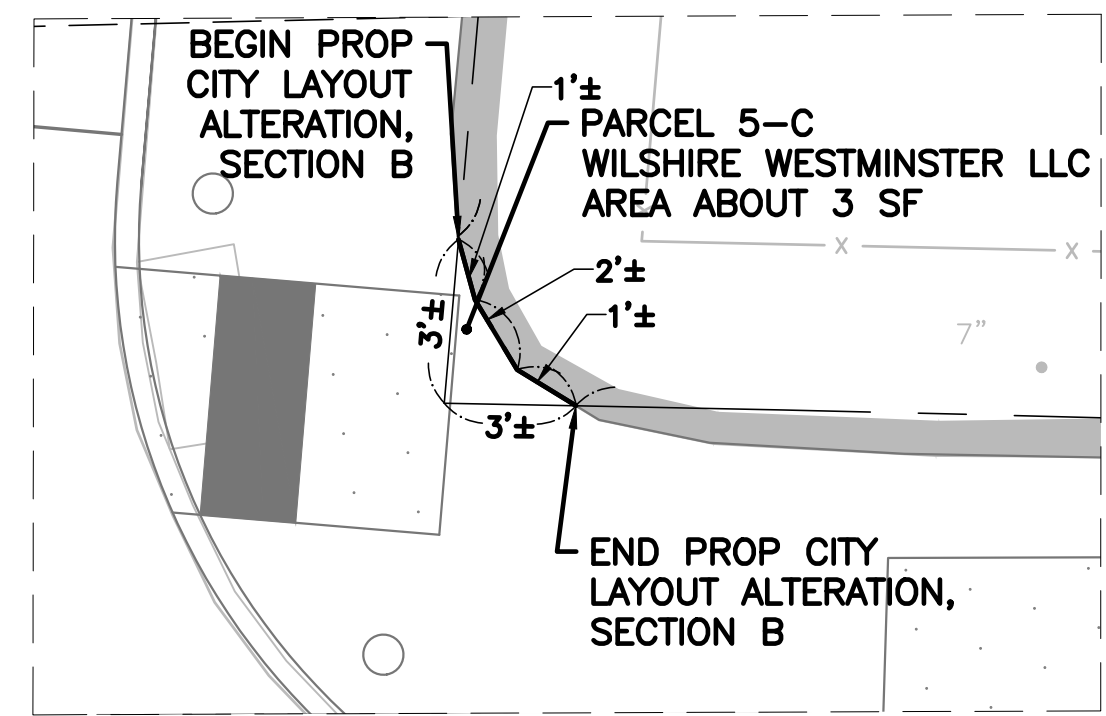
**HUMBOLDT COURT**  
(PUBLIC)



**BOSTON  
ELLIS ELEMENTARY SCHOOL**

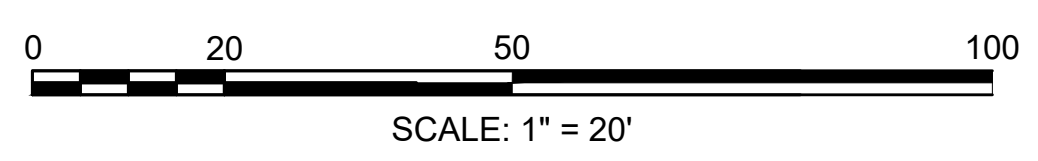
STATE	FED. AID PROJ. NO.	SHEET NO.	TOTAL SHEETS
MA		9	14
PROJECT FILE NO.		610537	

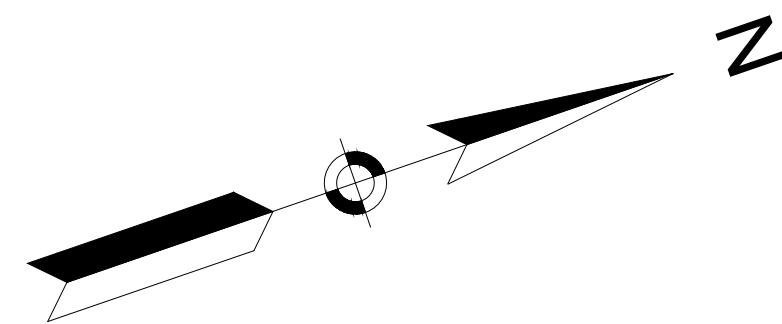
**PRELIMINARY RIGHT OF WAY  
PROPERTY PLANS - 1 OF 6**



NOTE: EACH ABUTTER TO HILTON TERRACE OWNS 1/15TH FEE INTEREST IN PRIVATE WAY KNOWN AS HILTON TERRACE

CONTINUED ON SHEET NO. 10



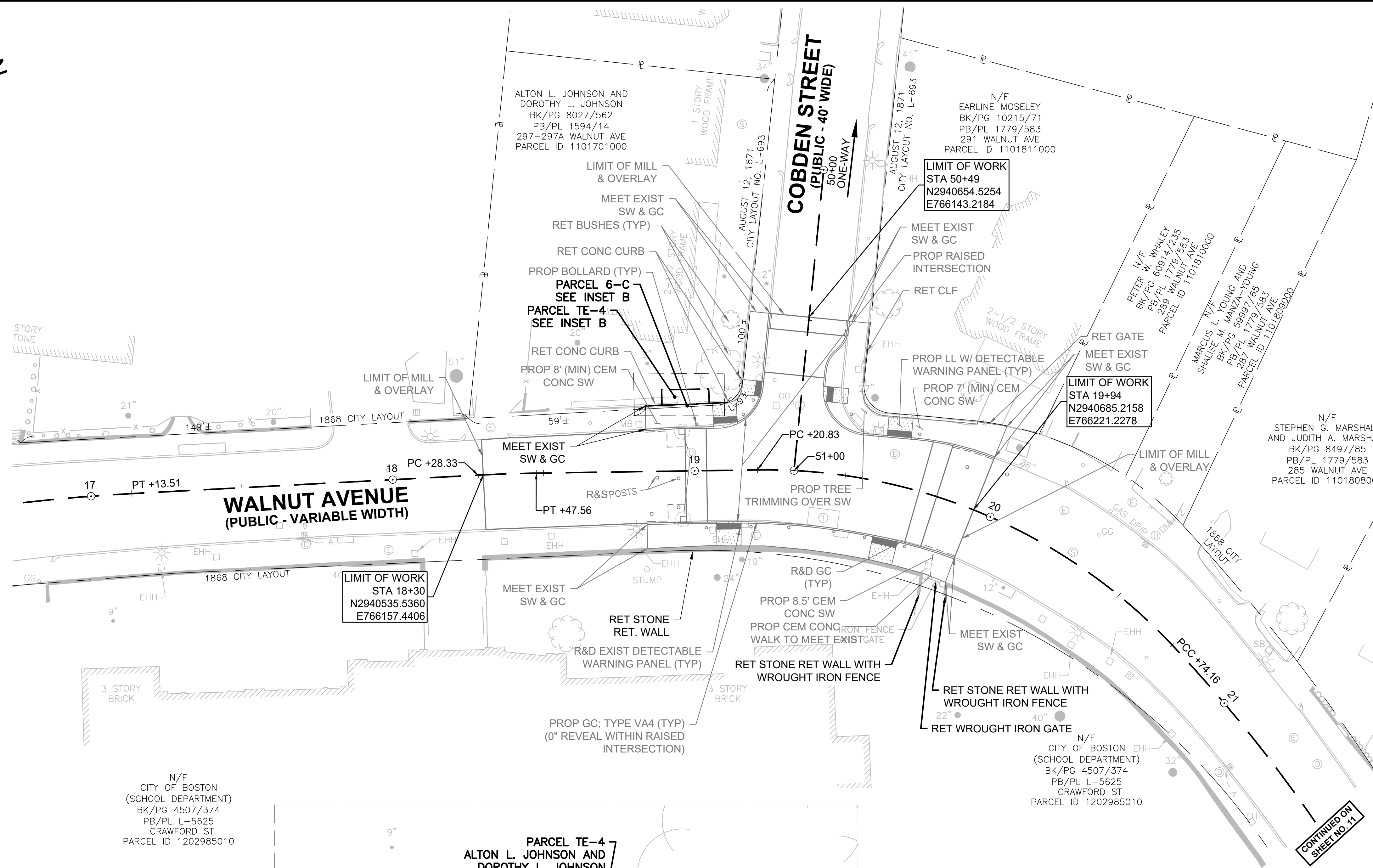


**BOSTON  
ELLIS ELEMENTARY SCHOOL**

STATE	FED. AID PROJ. NO.	SHEET NO.	TOTAL SHEETS
MA		10	14
PROJECT FILE NO.		610537	

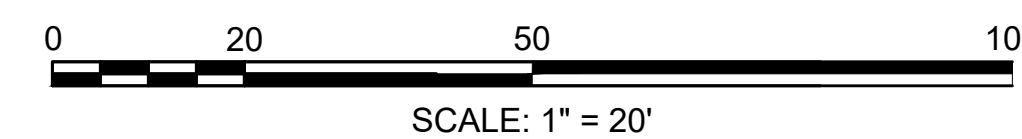
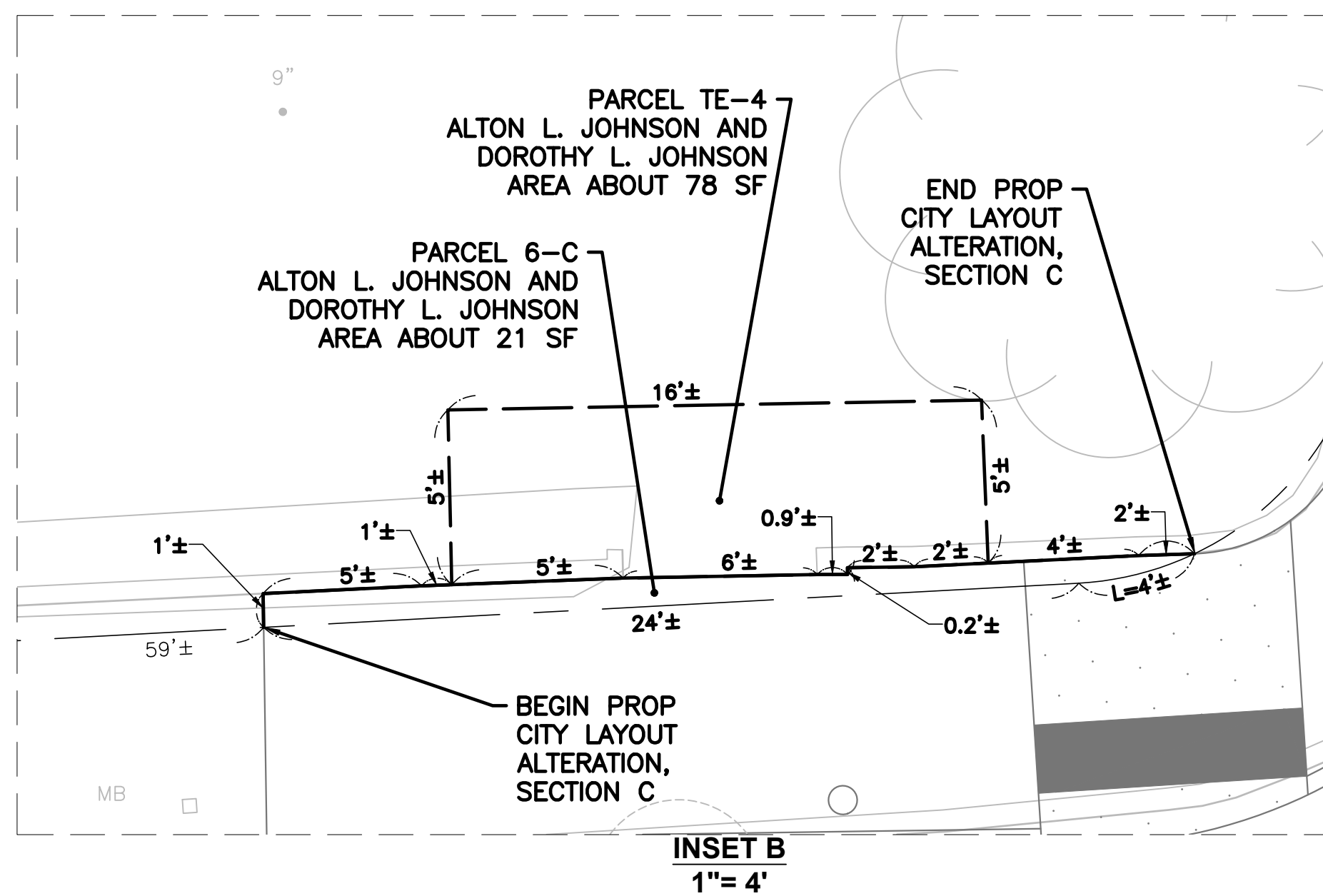
**PRELIMINARY RIGHT OF WAY  
PROPERTY PLANS - 2 OF 6**

CONTINUED ON  
SHEET NO. 9



CONTINUED ON  
SHEET NO. 11

N/F  
CITY OF BOSTON  
(SCHOOL DEPARTMENT)  
BK/PG 4507/374  
PB/PL L-5625  
CRAWFORD ST  
PARCEL ID 1202985010

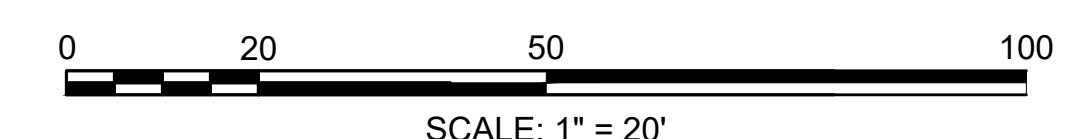
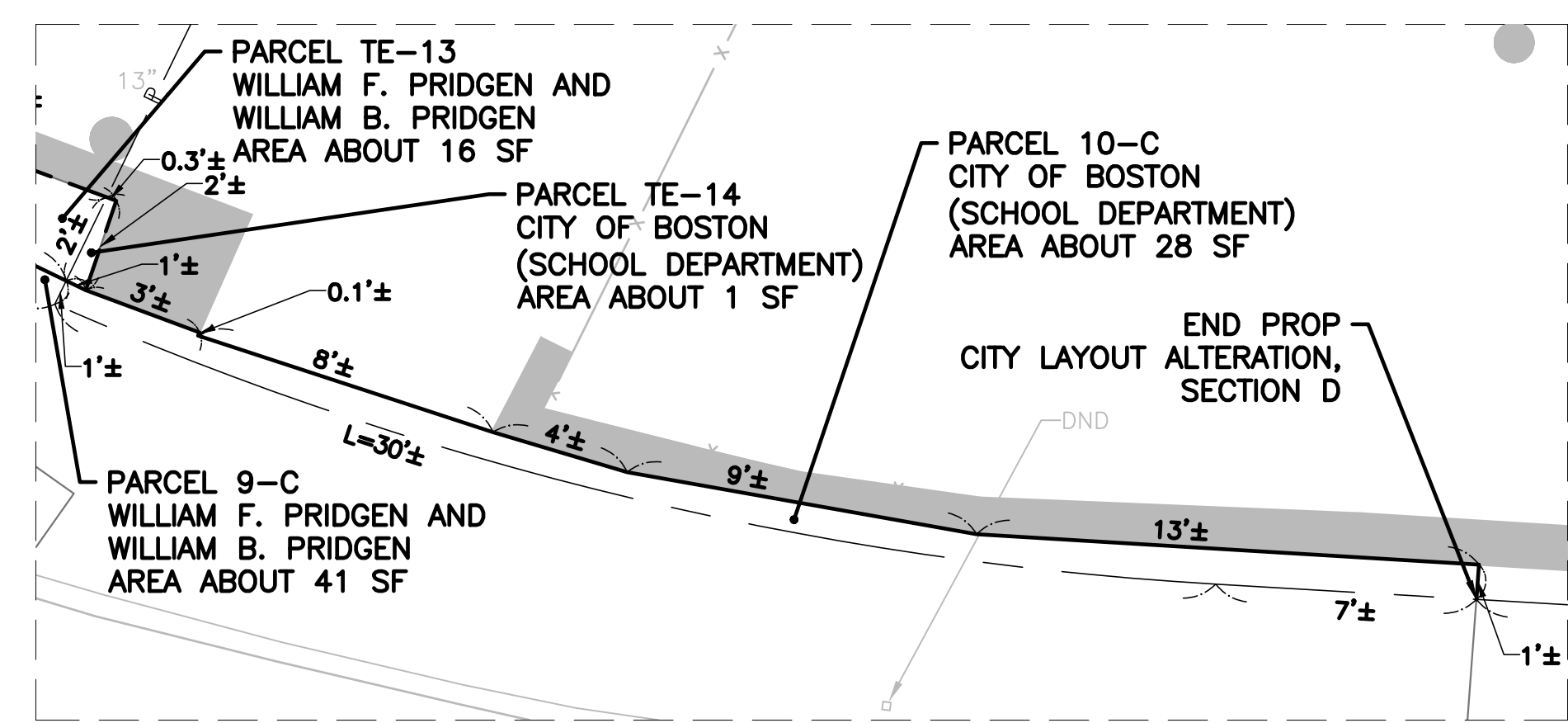
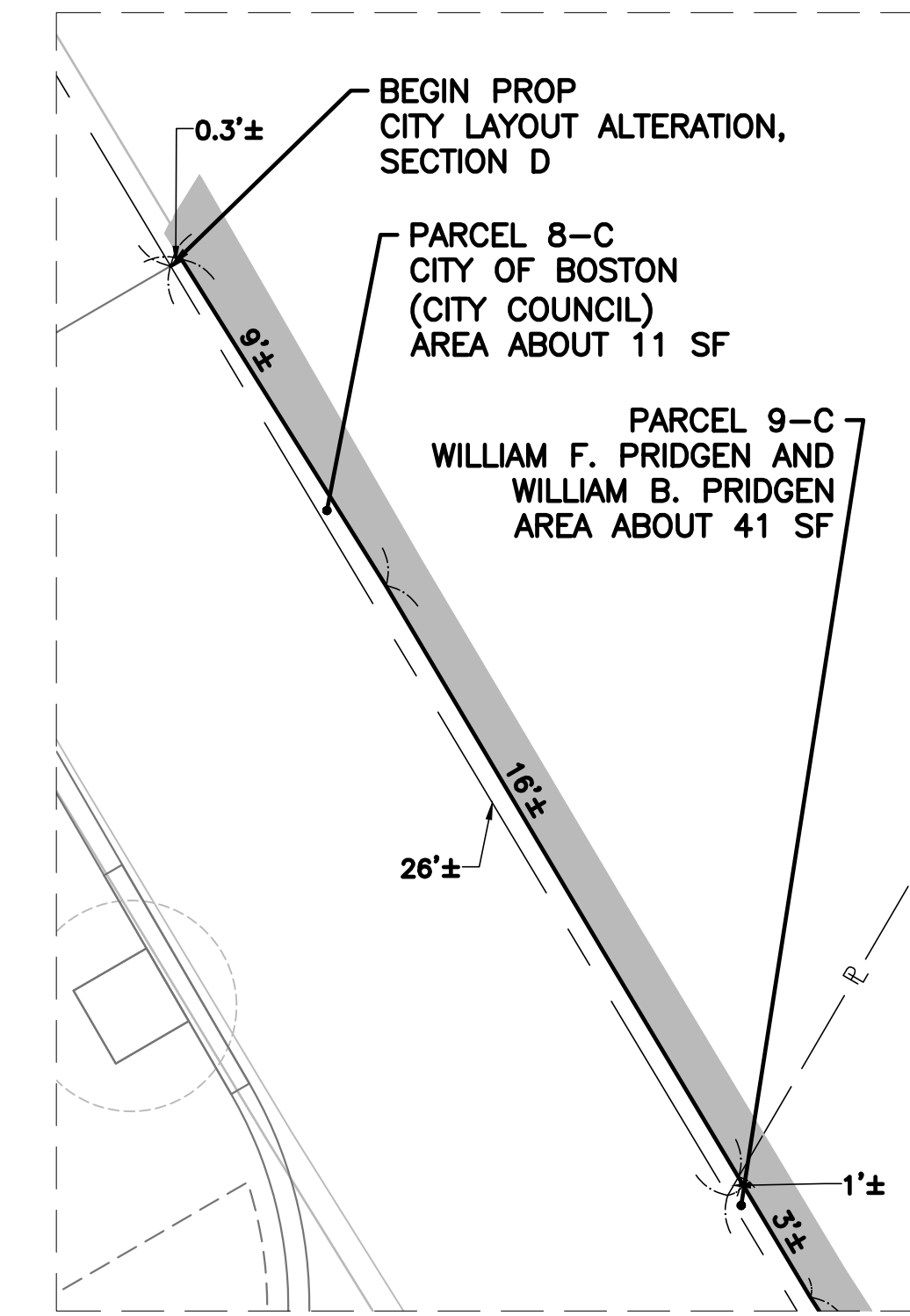
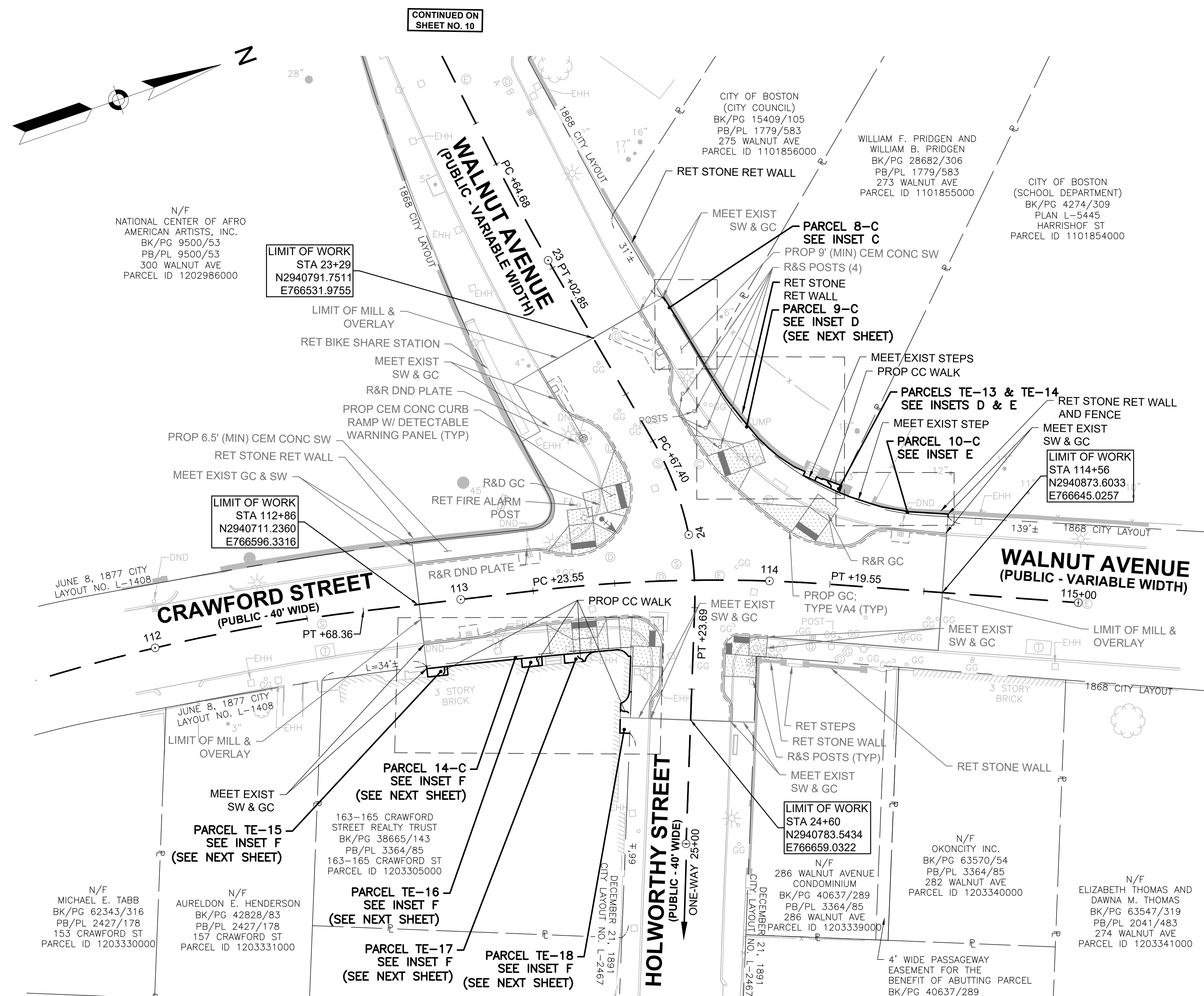




**BOSTON  
ELLIS ELEMENTARY SCHOOL**

STATE	FED. AID PROJ. NO.	SHEET NO.	TOTAL SHEETS
MA		11	14
PROJECT FILE NO.		610537	

**PRELIMINARY RIGHT OF WAY  
PROPERTY PLANS - 3 OF 6**





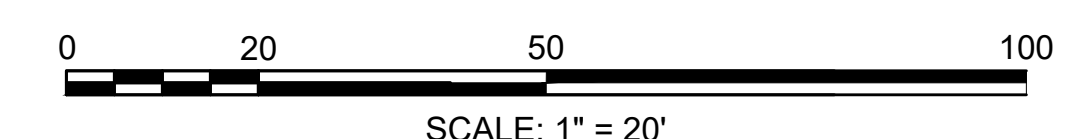
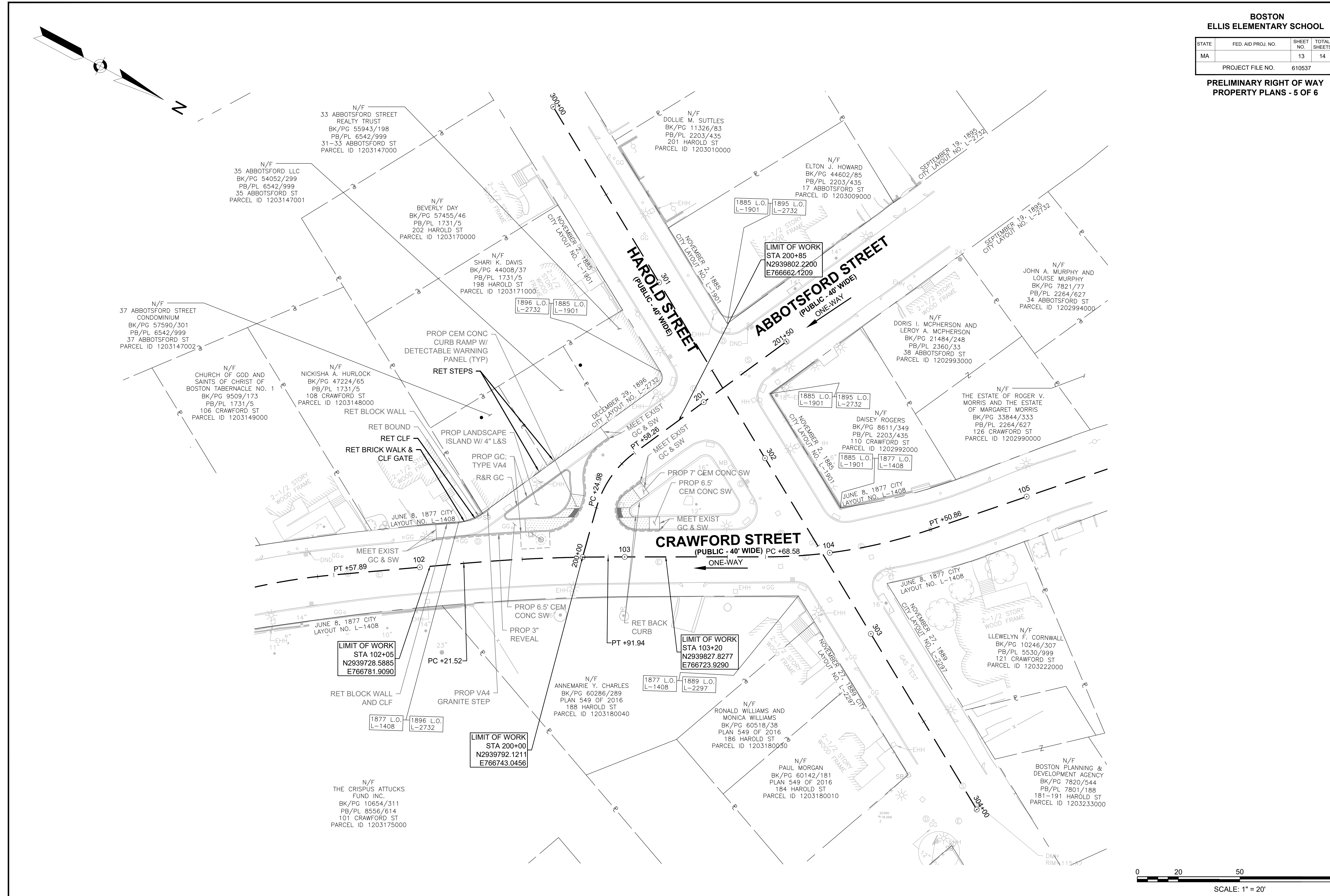


**BOSTON**  
**ELLIS ELEMENTARY SCHOOL**

STATE	FED AID PROJ. NO.	SHEET NO.	TOTAL SHEETS
MA		13	14
PROJECT FILE NO.		610537	

**PRELIMINARY RIGHT OF WAY**  
**PROPERTY PLANS - 5 OF 6**

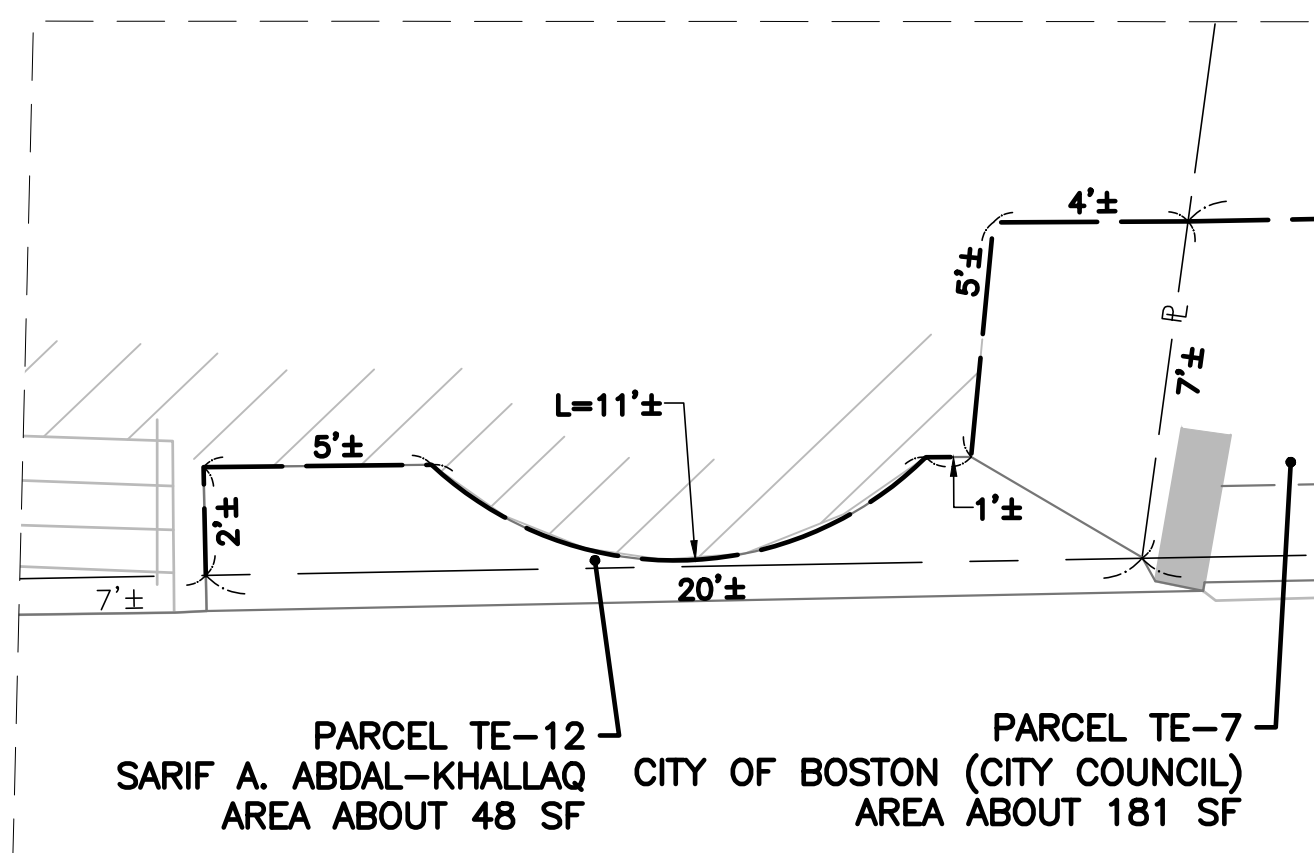
610537\_RWG\_(PROPERTY PLAN).DWG Plotted on 22-Feb-2023 8:51 AM



**BOSTON  
ELLIS ELEMENTARY SCHOOL**

STATE	FED AID PROJ. NO.	SHEET NO.	TOTAL SHEETS
MA		14	14
PROJECT FILE NO.		610537	

**PRELIMINARY RIGHT OF WAY  
PROPERTY PLANS - 6 OF 6**



**INSET G**  
1" = 4'

