

# BOYLSTON STREET BETTER BIKE LANE | DESIGN CONCEPT OVERHEAD VIEW

CITY of BOSTON



Published May 23, 2023. Updated July 21, 2023.



## ABOUT THIS ILLUSTRATION

This is a representation of our design plans for Boylston Street between Massachusetts Avenue and Arlington Street. It is for informational purposes only: it is not drawn to scale and is not meant for construction. Details are still subject to change. For more information, visit [boston.gov/boylston-street-back-bay](https://boston.gov/boylston-street-back-bay).

## PARKING & CURB REGULATIONS

Vehicle parking is illustrated at approximately one parking space per 20' of curb length. We are working with abutters to set curb regulations.

# BOYLSTON STREET BETTER BIKE LANE | DESIGN CONCEPT OVERHEAD VIEW

Published May 23, 2023. Updated July 21, 2023.

CITY of BOSTON



## ABOUT THIS ILLUSTRATION

This is a representation of our design plans for Boylston Street between Massachusetts Avenue and Arlington Street. It is for informational purposes only: it is not drawn to scale and is not meant for construction. Details are still subject to change. For more information, visit [boston.gov/boylston-street-back-bay](https://boston.gov/boylston-street-back-bay).

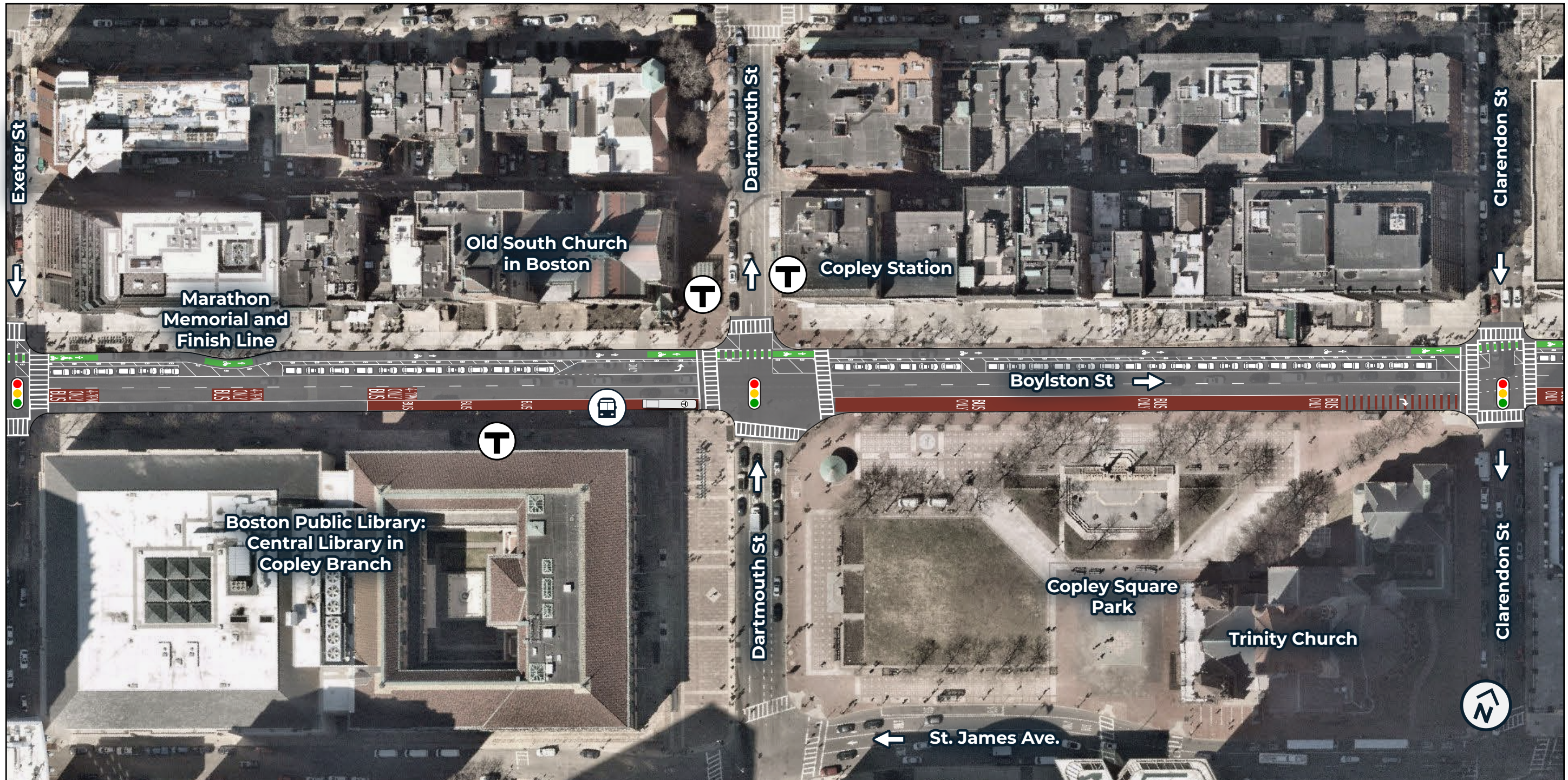
## PARKING & CURB REGULATIONS

Vehicle parking is illustrated at approximately one parking space per 20' of curb length. We are working with abutters to set curb regulations.

# BOYLSTON STREET BETTER BIKE LANE | DESIGN CONCEPT OVERHEAD VIEW

Published May 23, 2023. Updated July 21, 2023.

CITY of **BOSTON**



## ABOUT THIS ILLUSTRATION

This is a representation of our design plans for Boylston Street between Massachusetts Avenue and Arlington Street. It is for informational purposes only: it is not drawn to scale and is not meant for construction. Details are still subject to change. For more information, visit [boston.gov/boylston-street-back-bay](https://boston.gov/boylston-street-back-bay).

## PARKING & CURB REGULATIONS

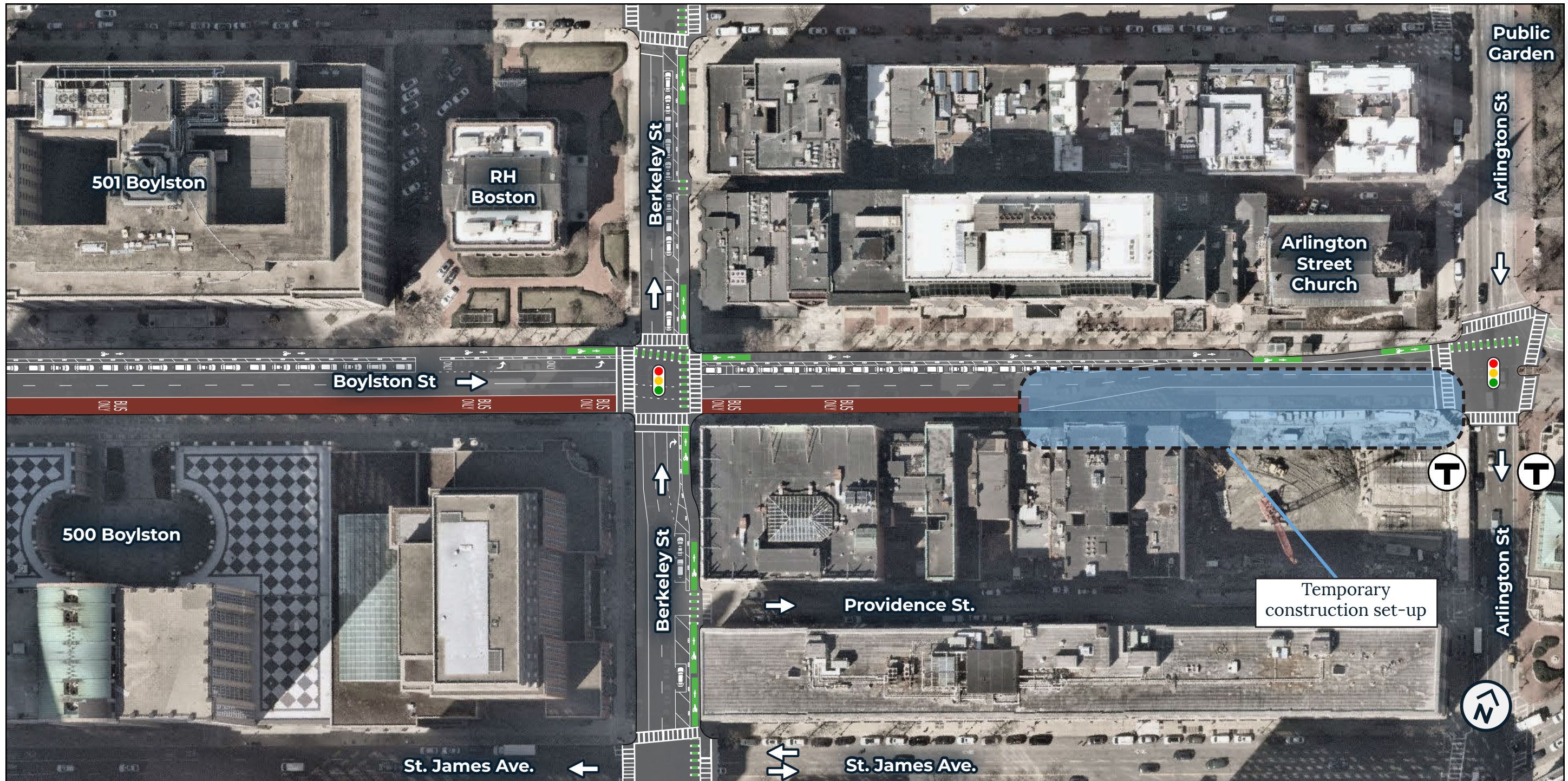
Vehicle parking is illustrated at approximately one parking space per 20' of curb length. We are working with abutters to set curb regulations.

# BOYLSTON STREET BETTER BIKE LANE | DESIGN CONCEPT OVERHEAD VIEW

CITY of BOSTON



Published May 23, 2023. Updated July 21, 2023.



## ABOUT THIS ILLUSTRATION

This is a representation of our design plans for Boylston Street between Massachusetts Avenue and Arlington Street. It is for informational purposes only: it is not drawn to scale and is not meant for construction. Details are still subject to change. For more information, visit [boston.gov/boylston-street-back-bay](https://boston.gov/boylston-street-back-bay).

## PARKING & CURB REGULATIONS

Vehicle parking is illustrated at approximately one parking space per 20' of curb length. We are working with abutters to set curb regulations.