

COSENTINO

EXTERIOR SIGNAGE SUBMISSION



COSENTINO

36 THOMSON PLACE

marguliesperruzzi

DESIGN REVIEW AGENDA

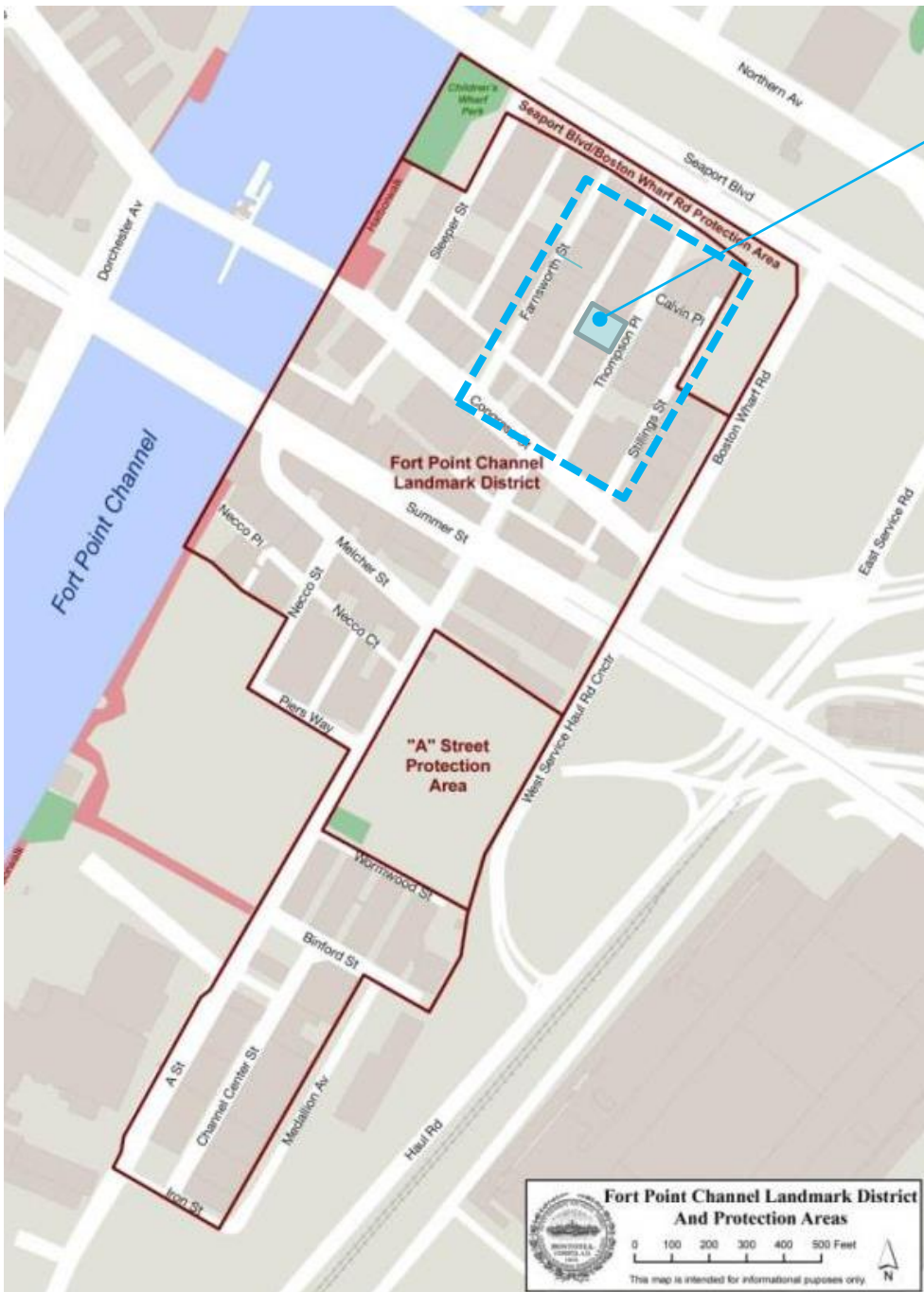
LOCATION OF BUILDING WITHIN DISTRICT

HISTORIC NEIGHBORHOOD SIGNAGE REFERENCE

EXISTING NEIGHBORHOOD SIGNAGE REFERENCE

PROPOSED SIGNAGE ELEMENTS

- 36 THOMSON EXISTING CONDITIONS
- 36 THOMSON REVISED DESIGN LAYOUT
- 36 THOMSON REVISED SIGNAGE DETAILS



36 THOMSON PLACE



FORT POINT CHANNEL LANDMARK DISTRICT

PROJECT LOCATION MAPS



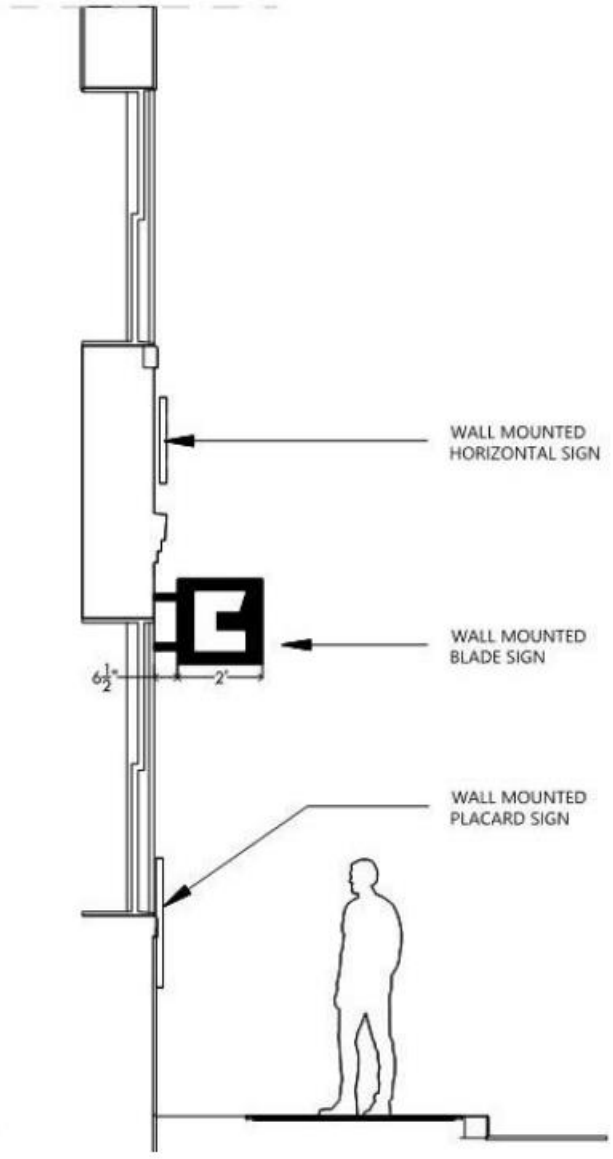
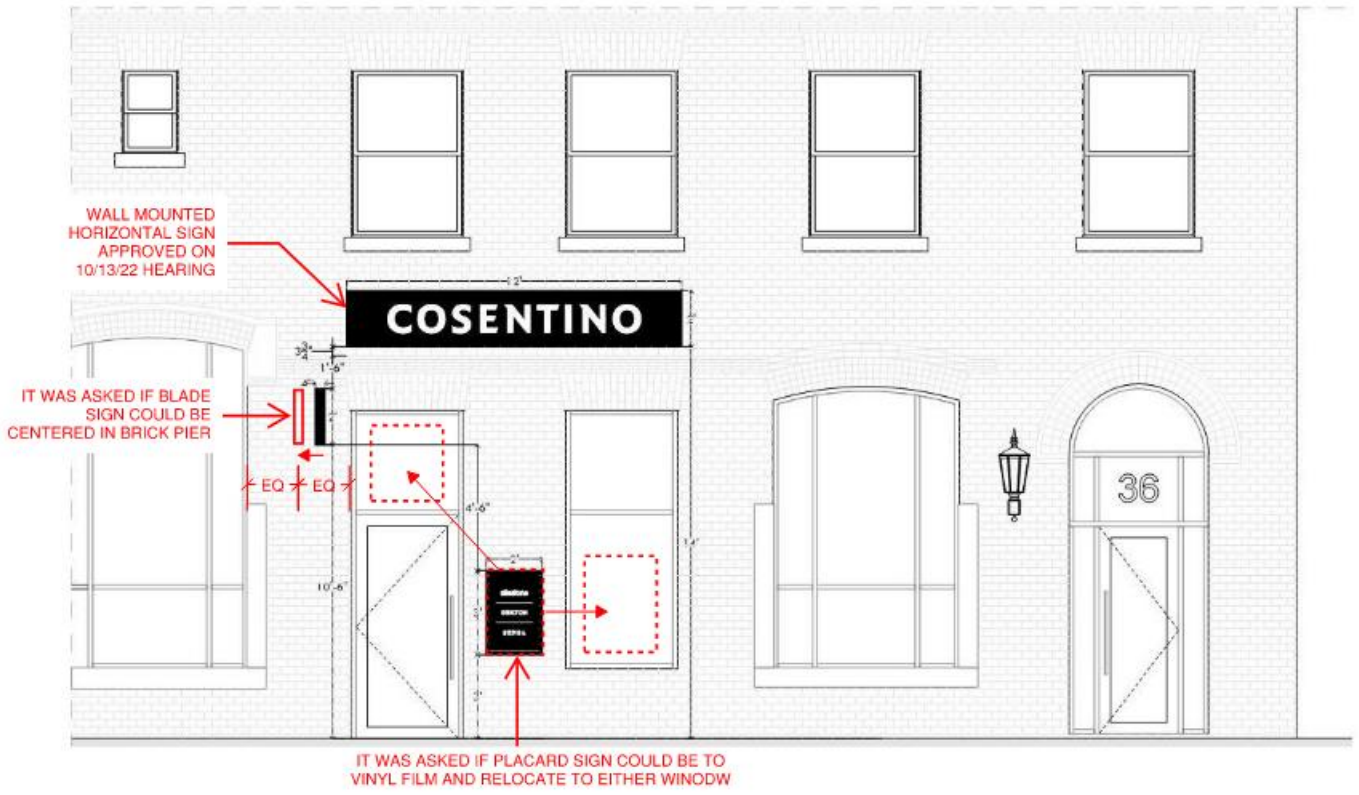
EXISTING CONDITION PHOTO

FRONT OF 36 THOMSON PLACE – VIEW FROM ACROSS STREET



EXISTING CONDITION PHOTO

FRONT OF 36 THOMSON PLACE – ENLARGED VIEW



INITIAL PROPOSAL FEEDBACK

PROPOSED SIGNAGE - THOMSON PLACE VIEW

COSENTINO

marguliesperruzzi

2.9.2023



SIGNAGE TYPES

COMPANY NAME (& OFFERINGS)
PAINTED ON WOOD SIGN

COMPANY NAME (& OFFERINGS)
PAINTED ON BRICK FACADE

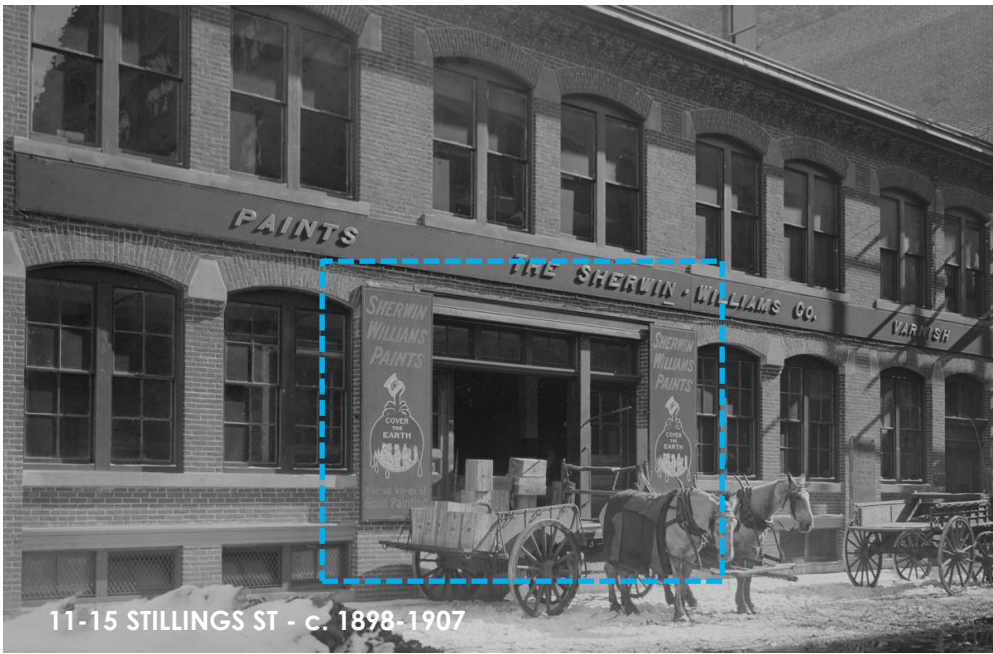
COMPANY NAME (& OFFERINGS)
PAINTED ON BRICK FACADE

COMPANY FUNCTION
PAINTED ON WOOD FACADE

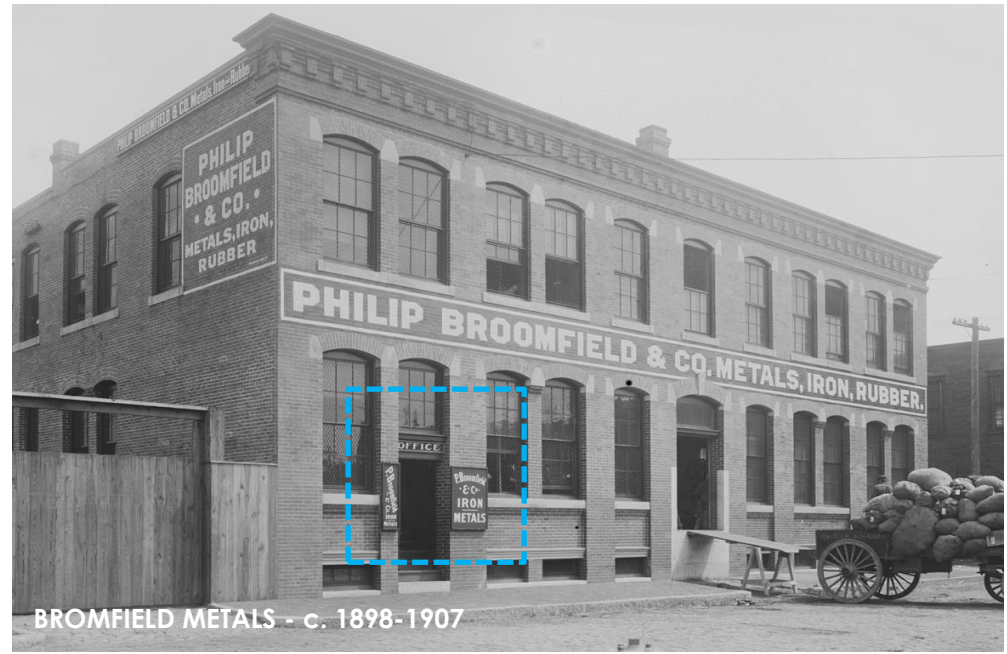
COMPANY NAME AND/OR
OFFERINGS PAINTED ON BRICK

TYPICAL STOREFRONT LOCATIONS WITH PAINTED BRICK & PAINTED WOOD

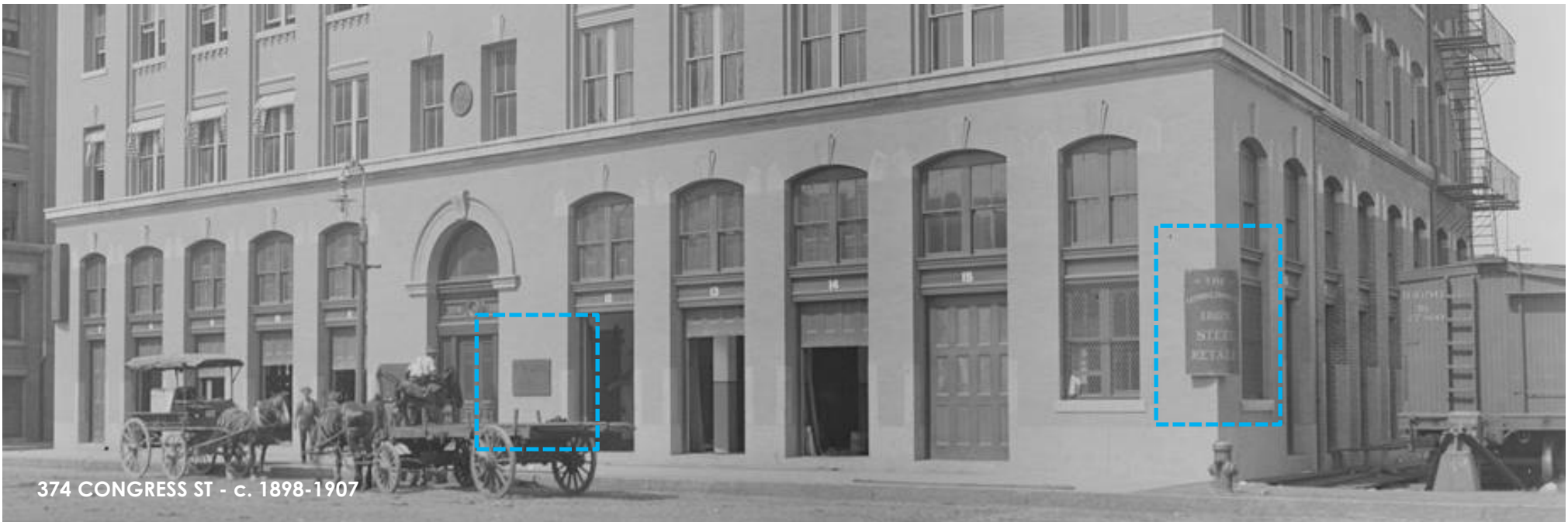
HISTORIC SIGNAGE REFERENCE



11-15 STILLINGS ST - c. 1898-1907

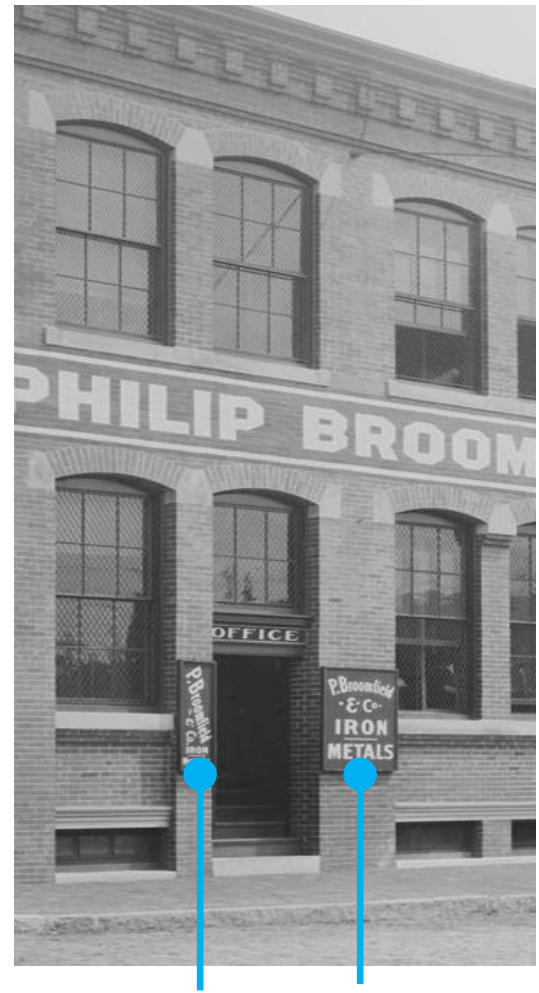
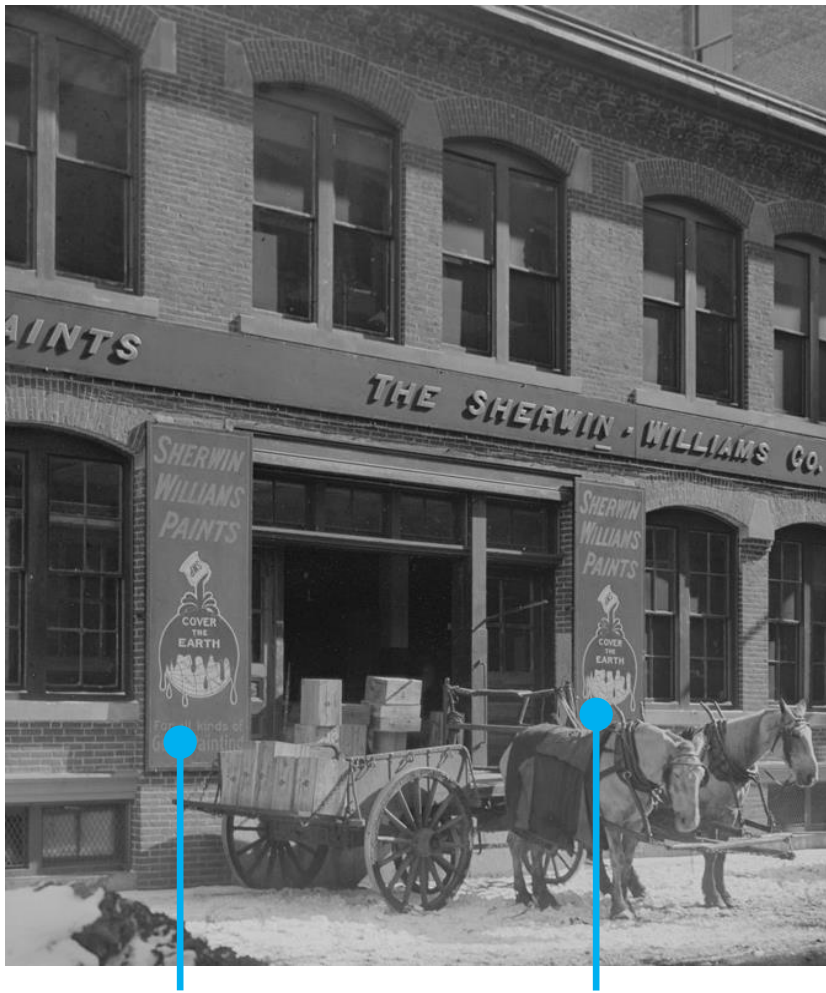


BROMFIELD METALS - c. 1898-1907



374 CONGRESS ST - c. 1898-1907

HISTORIC NEIGHBORHOOD REFERENCE PHOTOS



HISTORIC PRECEDENTS FOR WALL MOUNTED PLACARD SIGNS

HISTORIC NEIGHBORHOOD REFERENCE PHOTOS



44 FARNSWORTH ST
31" W x 21" H



9 CHANNEL CENTER STREET

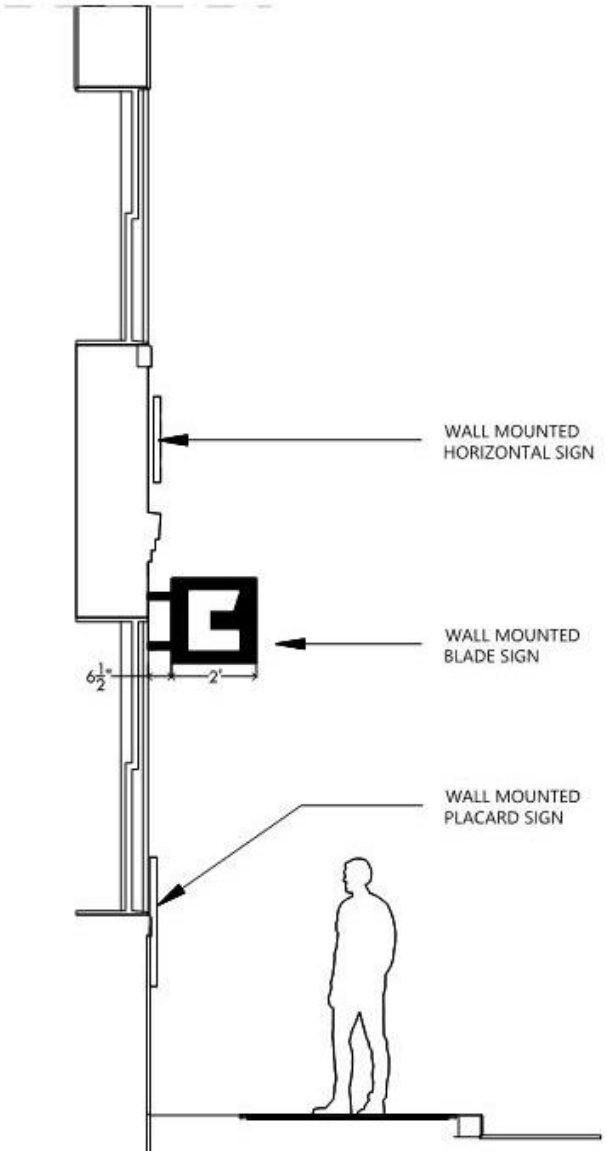
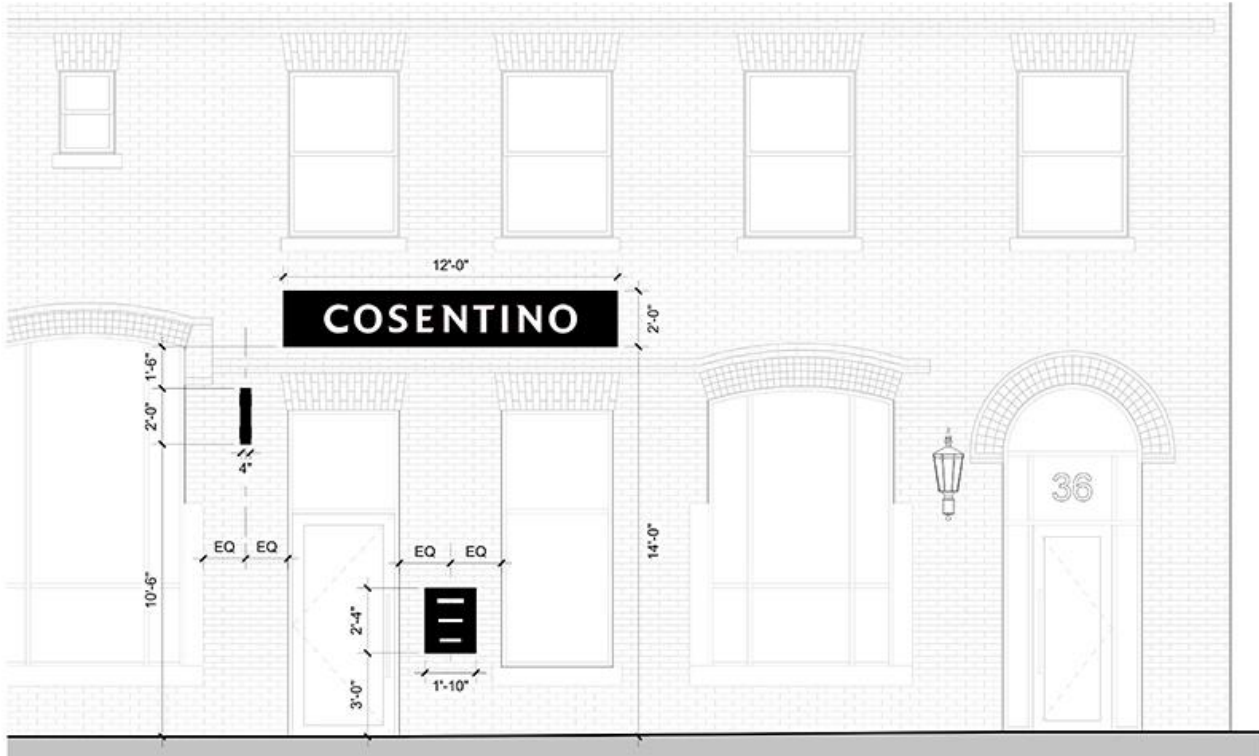


55 THOMSON PL
64" W x 44" H



326 A ST
33.5" W x 60" H

EXISTING NEIGHBORHOOD REFERENCE PHOTOS



PROPOSED DESIGN LAYOUT

PROPOSED SIGNAGE CONFIGURATION

SIGNAGE TYPES



COMPANY NAME
PAINTED WOOD PANEL

COMPANY LOGO
PAINTED METAL

COMPANY OFFERINGS
PAINTED WOOD PANEL

CONCEPTUAL RENDERING

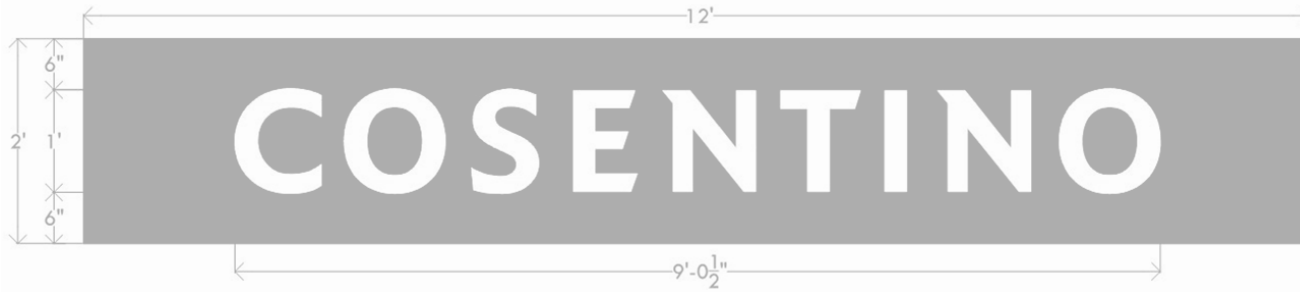
PROPOSED SIGNAGE - THOMSON PLACE VIEW

COSENTINO

marguliesperruzzi

2.9.2023

WALL MOUNTED HORIZONTAL SIGN



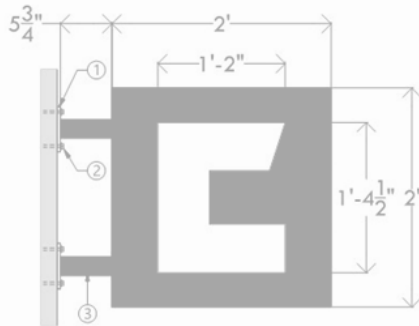
ELEVATION VIEW



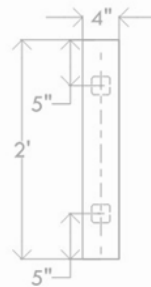
- ① 1" Painted Wood Panel.
- ② 6" Border to edge around text, TYP for all sides.
- ③ Z-clip wall attachment. Non-corrosive 1/4"- 20 thru-bolts with fender washers & nuts. Mount into existing mortar joints. Mounting hardware may vary to suit wall conditions.

SECTION VIEW

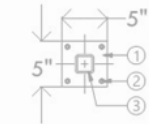
WALL MOUNTED BLADE SIGN



ELEVATION VIEW



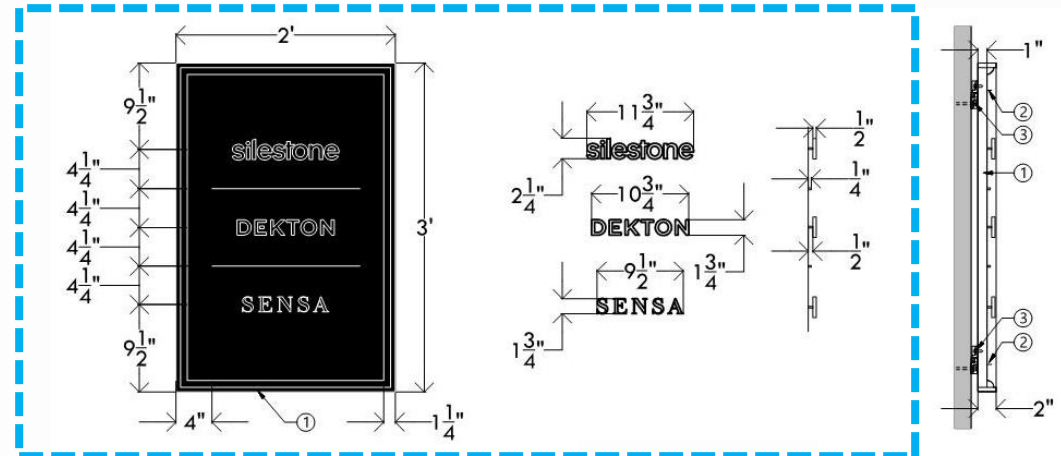
SECTION VIEW



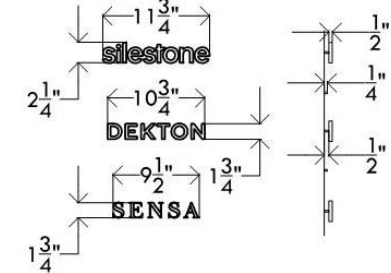
MOUNTING PLATE

- ① 3/8"x 5"x 5" aluminum mounting plate. PTM Matthews brushed aluminum.
- ② Non-corrosive 1/4"- 20 thru-bolts with fender washers & nuts. Mount into existing mortar joints. Mounting hardware may vary to suit wall conditions.
- ③ 2" radius corner square aluminum PTM Matthews brushed aluminum.

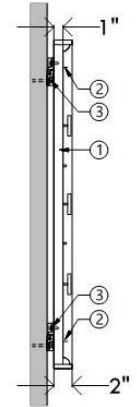
WALL MOUNTED PLACARD SIGN



ELEVATION VIEW



LETTER DIMENSIONS

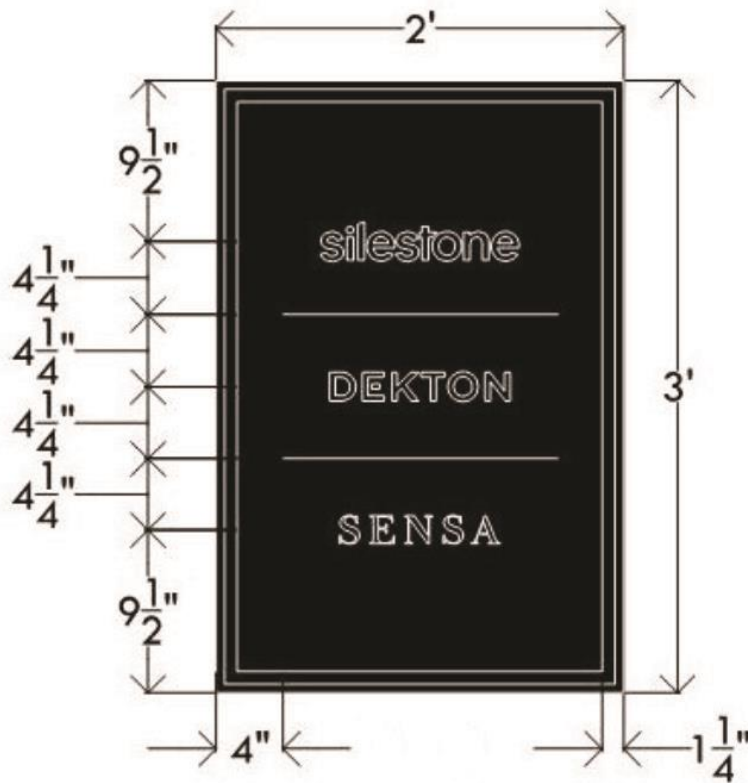


SECTION VIEW

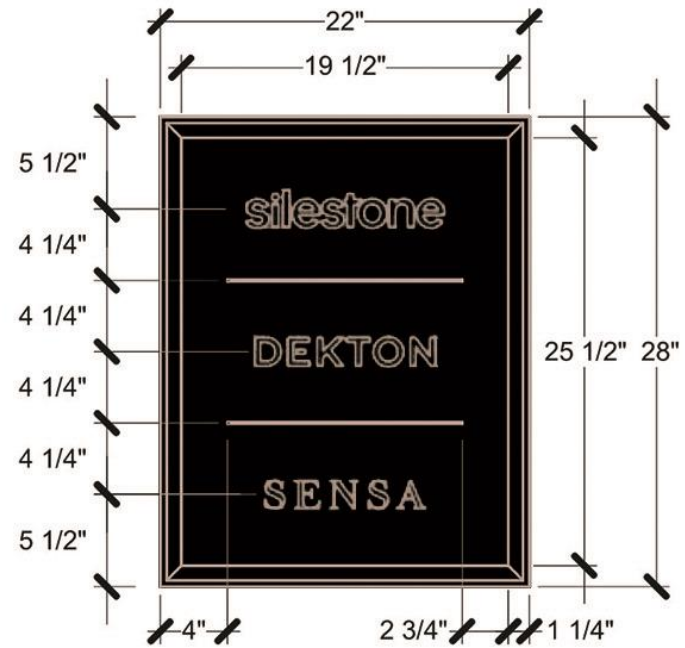
- ① 2" Painted Wood Panel.
- ② 4" Border to edge around text, TYP for all sides.
- ③ Z-clip wall attachment. Non-corrosive 1/4"- 20 thru-bolts with fender washers & nuts. Mount into existing mortar joints. Mounting hardware may vary to suit wall conditions.

* ALL SIGNS TO LOCATE FASTENERS WITHIN MORTAR JOINTS

PROPOSED SIGNAGE DETAILS



PROPOSED



REVISED

PROPOSED SIGNAGE DETAILS – REVISED WALL PLACARD



COSENTINO

marguliesperruzzi