

# **Boston Public Health Commission Wastewater Epidemiology Program COVID-19 Report**

*Updated: 17-Jan-2023 | Data Complete Through: 11-Jan-2023*

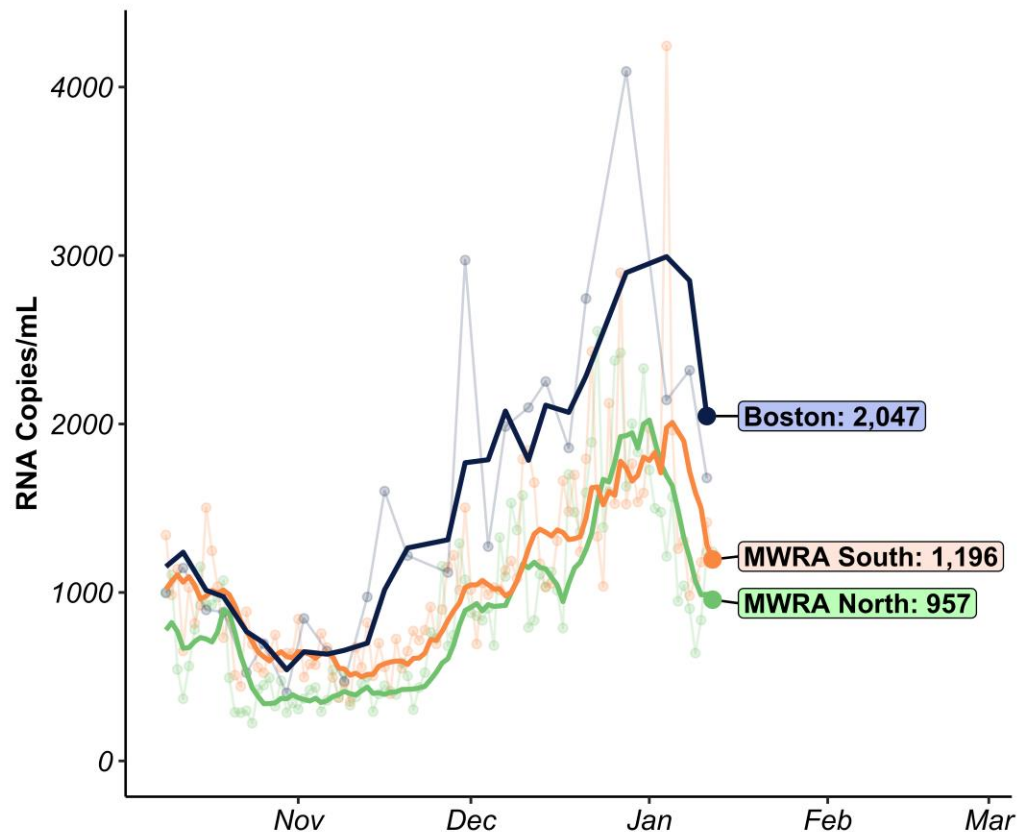


# Report Contents

1. Overview and Summary
2. Results by Neighborhood
3. Variant Results
4. Neighborhood Site Status & Details



# Overview and Trends



CITYWIDE  
AVERAGE

**2,047**  
RNA copies/mL

RANGE ACROSS 11  
NEIGHBORHOOD SITES

**599 – 3,307**  
RNA copies/mL

Data through: **11-Jan-2023**

## 2 WEEK TRENDS

Boston

**Decreasing**

**-29%**

over the past 2 weeks

MWRA North

**Decreasing**

**-57%**

over the past 2 weeks

MWRA South

**Decreasing**

**-23%**

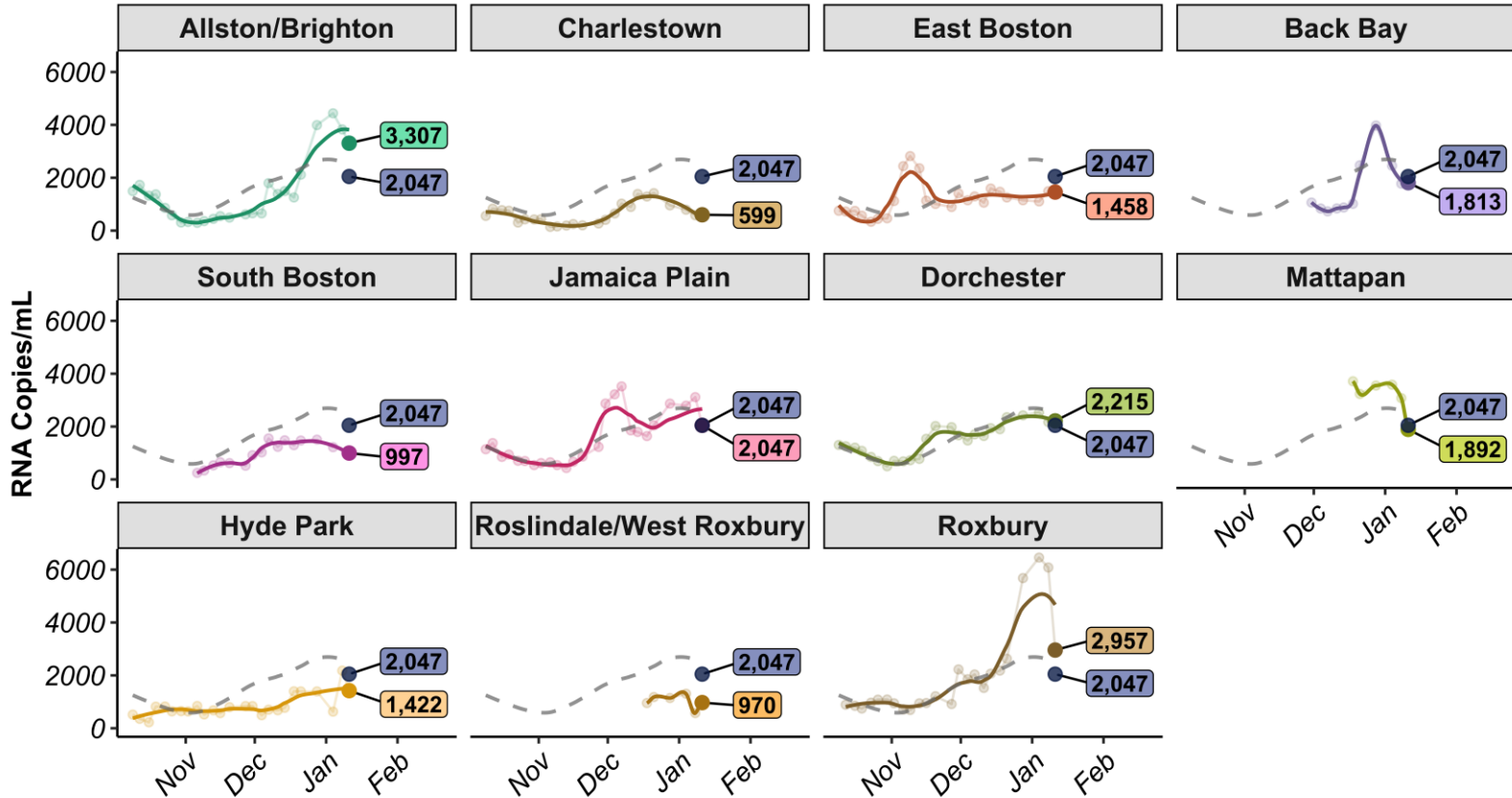
over the past 2 weeks



# RESULTS BY NEIGHBORHOOD



# BPHC Neighborhood Trends



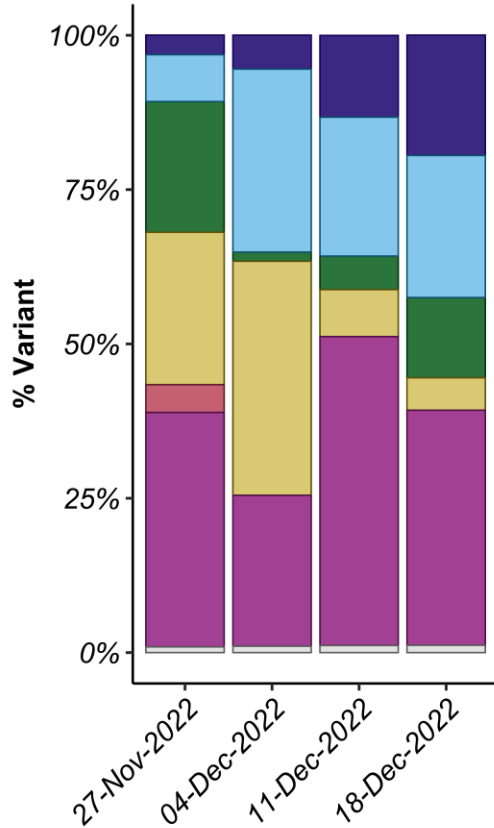
Points shown are 3-sample average values (i.e., 8-day moving average); line shows smoothed trend for 8-day moving average; dotted grey line in each panel represents average across all Boston sites weighted by population.



# VARIANT RESULTS



# Percent Variant Lineages (Citywide)



| Variant | %     |
|---------|-------|
| BA.2*   | 19.5% |
| XBB     | 23.0% |
| BA.4*   | 13.0% |
| BA.5*   | 5.3%  |
| BF.7    | 0.0%  |
| BQ.1*   | 38.1% |
| Other   | 1.2%  |

Average variant percentage across all BPHC sites weighted by population size; Table shows variant percentages for samples collected the week of 18-Dec-2022 (most recent available data); Variant results are reported weekly with a 3-week lag due to laboratory processing and analysis.

BA.2\* includes BA.2, BA.2.12, BA.2.12.1, and other BA.2 sub-lineages; BA.4\* includes BA.4 and its sublineages, including BA.4.6; BA.5\* includes the sublineages of BA.5, except BQ.1\* and BF.7; BQ.1\* includes BQ.1 and its sublineages, including BQ.1.1; 'Other variants' contains all variants not explicitly quantified.; See: <https://www.biobot.io/covid19-variants-report-notes/>



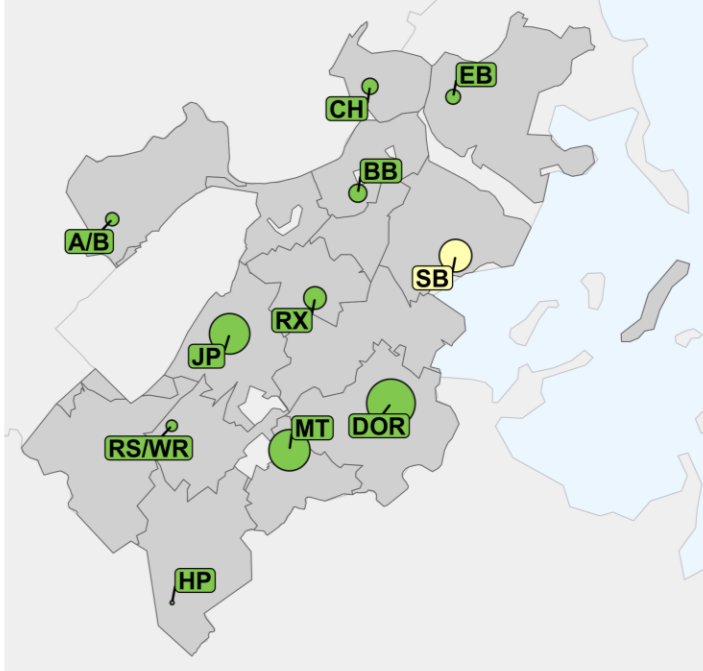
# NEIGHBORHOOD SITE STATUS & DETAILS





# Neighborhood Site Status and Details

Status of Wastewater Sampling Locations  
(10-Jan-2023)



Site Status (N=11) a Active (n=10) a Paused: Construction (n=1)

| #  | Site  | Date Site Confirmed | Site Status                       | Pop. Covered | % Neighborhood Covered |
|----|-------|---------------------|-----------------------------------|--------------|------------------------|
| 01 | A/B   | 02-Oct-2022         | Active                            | 2,684        | 4.0%                   |
| 02 | CH    | 02-Oct-2022         | Active                            | 3,736        | 18.3%                  |
| 03 | EB    | 02-Oct-2022         | Active                            | 3,178        | 6.3%                   |
| 04 | BB    | 20-Nov-2022         | Active                            | 4,551        | 8.1%                   |
| 05 | SB    | 30-Oct-2022         | Paused: Construction <sup>1</sup> | 14,962       | 35.8%                  |
| 07 | JP    | 02-Oct-2022         | Active                            | 23,573       | 56.9%                  |
| 08 | DOR   | 02-Oct-2022         | Active                            | 34,562       | 23.8%                  |
| 09 | MT    | 11-Dec-2022         | Active                            | 24,441       | 80.5%                  |
| 10 | HP    | 02-Oct-2022         | Active                            | 1,262        | 3.5%                   |
| 11 | RS/WR | 11-Dec-2022         | Active                            | 2,165        | 3.5%                   |
| 12 | RX    | 02-Oct-2022         | Active                            | 7,036        | 16.5%                  |

<sup>1</sup>Sampling at the South Boston site was paused starting on 28-Dec-2022 due to construction. Sampling is expected to resume in mid-January 2023.

