

Boston Public Health Commission Wastewater Epidemiology Program COVID-19 Report

Updated: 13-Jan-2023 | Data complete through: 08-Jan-2023

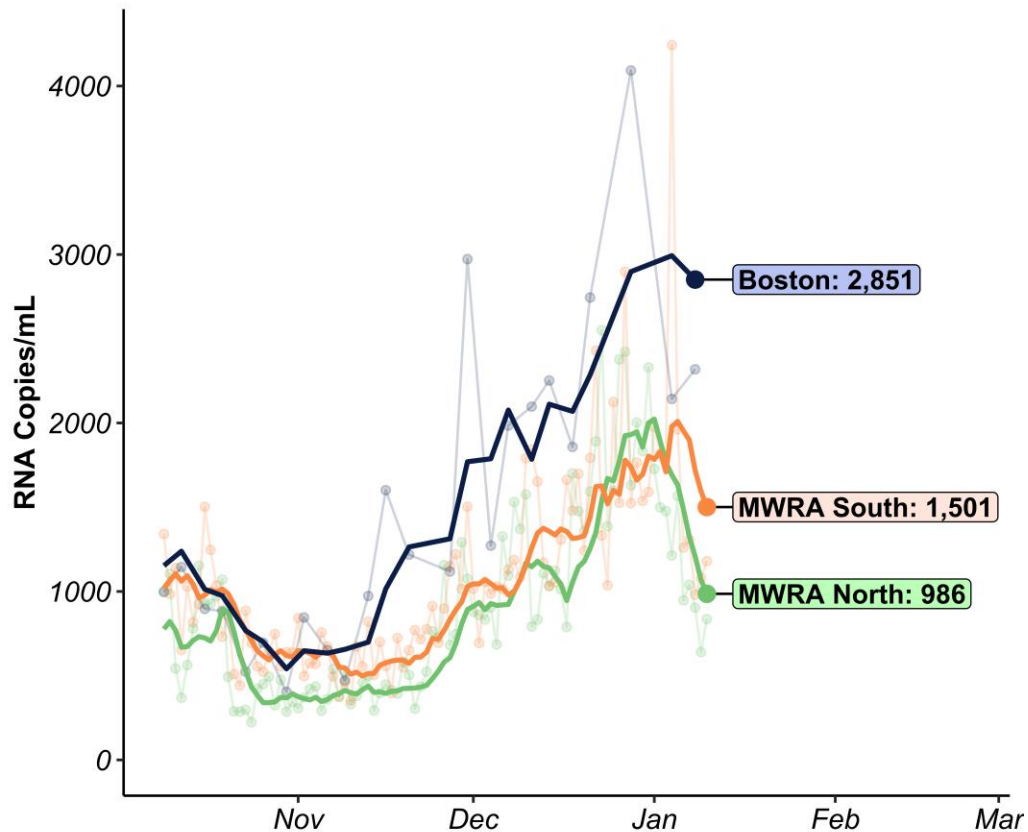


Report Contents

1. Overview and Summary
2. Results by Neighborhood
3. Variant Results
4. Neighborhood Site Status & Details



Overview/Summary



CITYWIDE AVERAGE	RANGE ACROSS 11 NEIGHBORHOOD SITES
2,851 <i>RNA copies/mL</i>	573 – 6,081 <i>RNA copies/mL</i>
Data through: 08-Jan-2023	

1-week trend: Stable	-3% over the past week
--------------------------------	----------------------------------

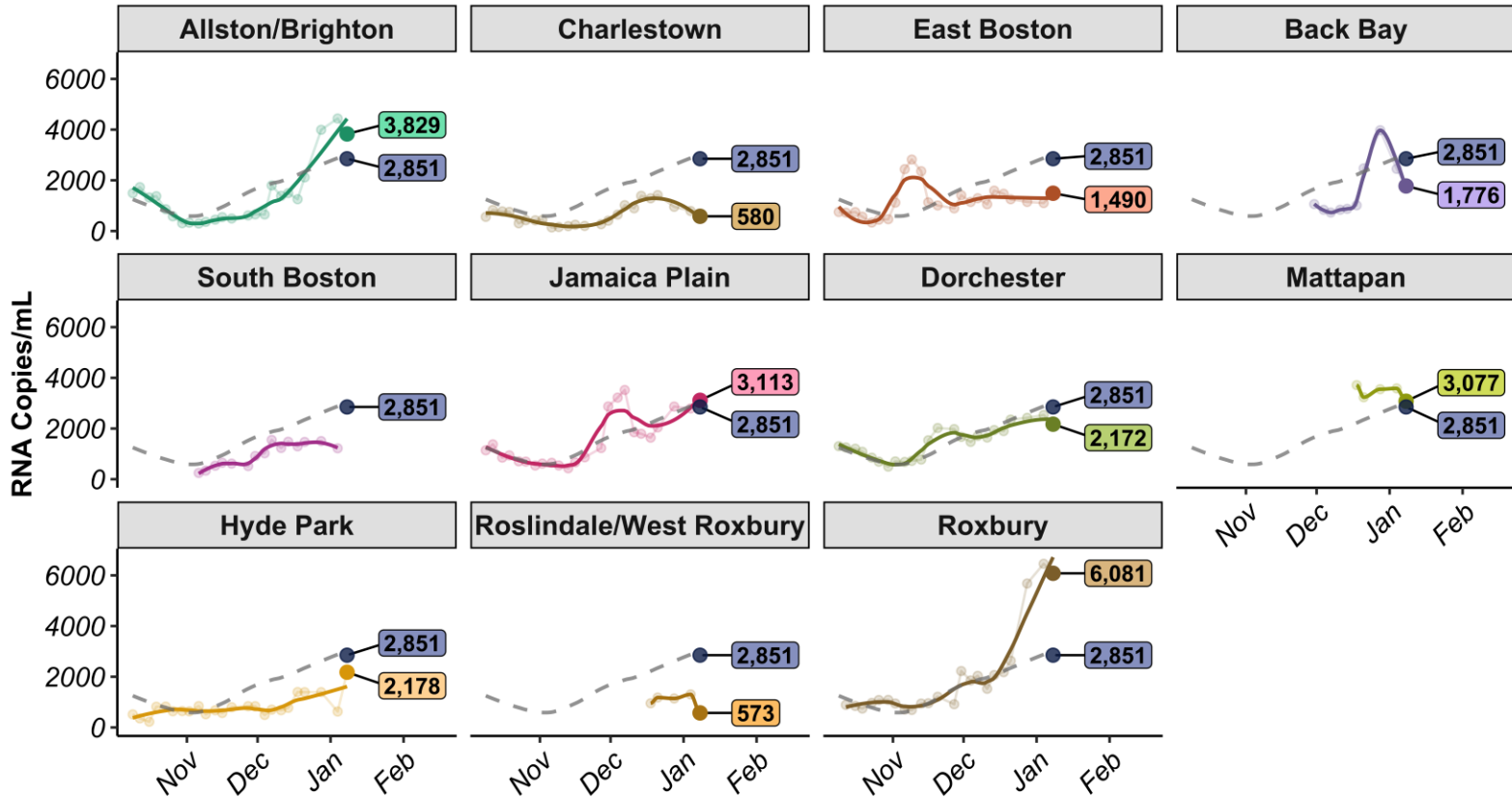
2-week trend: Increasing	+25% over the past 2 weeks
------------------------------------	--------------------------------------



RESULTS BY NEIGHBORHOOD



BPHC Neighborhood Trends



Points shown are 3-sample average values (i.e., 8-day moving average); line shows smoothed trend for 8-day moving average; dotted grey line in each panel represents average across all Boston sites weighted by population.

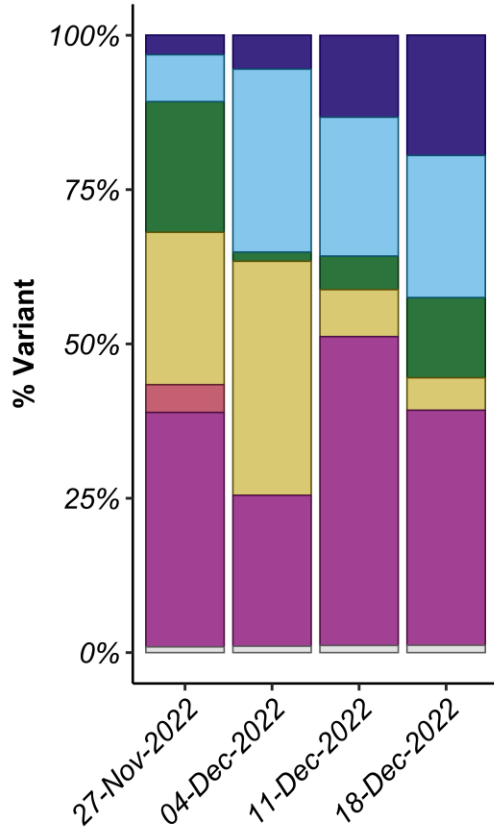
Collection at South Boston site was paused for construction and expected to resume mid-January



VARIANT RESULTS



Percent Variant Lineages (Citywide)



Variant	%
BA.2*	19.5%
XBB	23.0%
BA.4*	13.0%
BA.5*	5.3%
BF.7	0.0%
BQ.1*	38.1%
Other	1.2%

Average variant percentage across all BPHC sites weighted by population size; Table shows variant percentages for samples collected the week of 18-Dec-2022 (most recent available data); Variant results are reported weekly with a 3-week lag due to laboratory processing and analysis.

BA.2* includes BA.2, BA.2.12, BA.2.12.1, and other BA.2 sub-lineages; BA.4* includes BA.4 and its sublineages, including BA.4.6; BA.5* includes the sublineages of BA.5, except BQ.1* and BF.7; BQ.1* includes BQ.1 and its sublineages, including BQ.1.1; 'Other variants' contains all variants not explicitly quantified.; See: <https://www.biobot.io/covid19-variants-report-notes/>

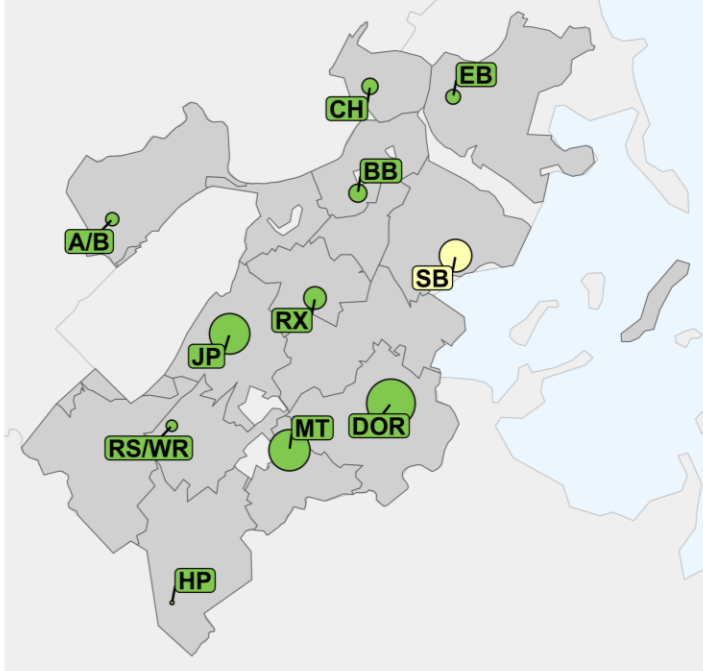


NEIGHBORHOOD SITE STATUS & DETAILS



Neighborhood Site Status and Details

Status of Wastewater Sampling Locations
(10-Jan-2023)



Site Status (N=11) a Active (n=10) a Paused: Construction (n=1)

#	Site	Date Site Confirmed	Site Status	Pop. Covered	% Neighborhood Covered
01	A/B	02-Oct-2022	Active	2,684	4.0%
02	CH	02-Oct-2022	Active	3,736	18.3%
03	EB	02-Oct-2022	Active	3,178	6.3%
04	BB	20-Nov-2022	Active	4,551	8.1%
05	SB	30-Oct-2022	Paused: Construction ¹	14,962	35.8%
07	JP	02-Oct-2022	Active	23,573	56.9%
08	DOR	02-Oct-2022	Active	34,562	23.8%
09	MT	11-Dec-2022	Active	24,441	80.5%
10	HP	02-Oct-2022	Active	1,262	3.5%
11	RS/WR	11-Dec-2022	Active	2,165	3.5%
12	RX	02-Oct-2022	Active	7,036	16.5%

¹Sampling at the South Boston site was paused starting on 28-Dec-2022 due to construction. Sampling is expected to resume in mid-January 2023.

