

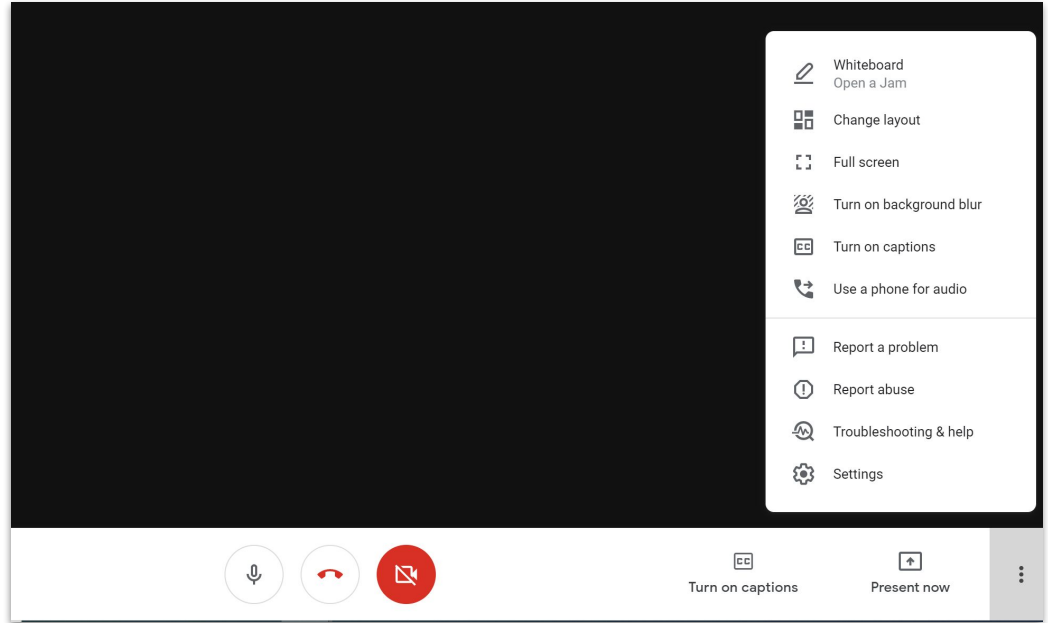


LOWER ROXBURY TRANSPORTATION STUDY

*Outreach Advisory Group
December 1, 2022*

TECH CHECK-IN

- ▶ Is your Google Meet working properly?
 - Can you hear and see?
 -  Can you mute and unmute?
 -  Can you turn your video on and off?
- ▶ You can also join by phone:
650-667-2610
PIN: 300 991 119#
- ▶ Having trouble? Call Ashley (she'll put her number in the chat)



TIP: the options bar is at the bottom of your screen

TODAY'S CONVENING

OUTCOMES

- ▶ Learn about new Green Infrastructure initiatives
- ▶ Share a few of the more significant changes to the plans since our summer outreach
- ▶ Review next steps for the project
- ▶ Discuss outreach strategy in the context of next steps

AGENDA

- 11:00 ▶ Suggest any revisions to desired outcomes and/or agenda
- 11:05 ▶ Introductions
- 11:10 ▶ Refresher on this group, what we've done to date
- 11:15 ▶ Overview of new Green Infrastructure initiatives
- 11:25 ▶ Review some of the more significant changes since our summer outreach
- 11:45 ▶ Discuss outreach strategy for this next phase
- 11:55 ▶ Agree to next steps for the group and evaluate meeting

INTRODUCTIONS

INTRODUCTIONS

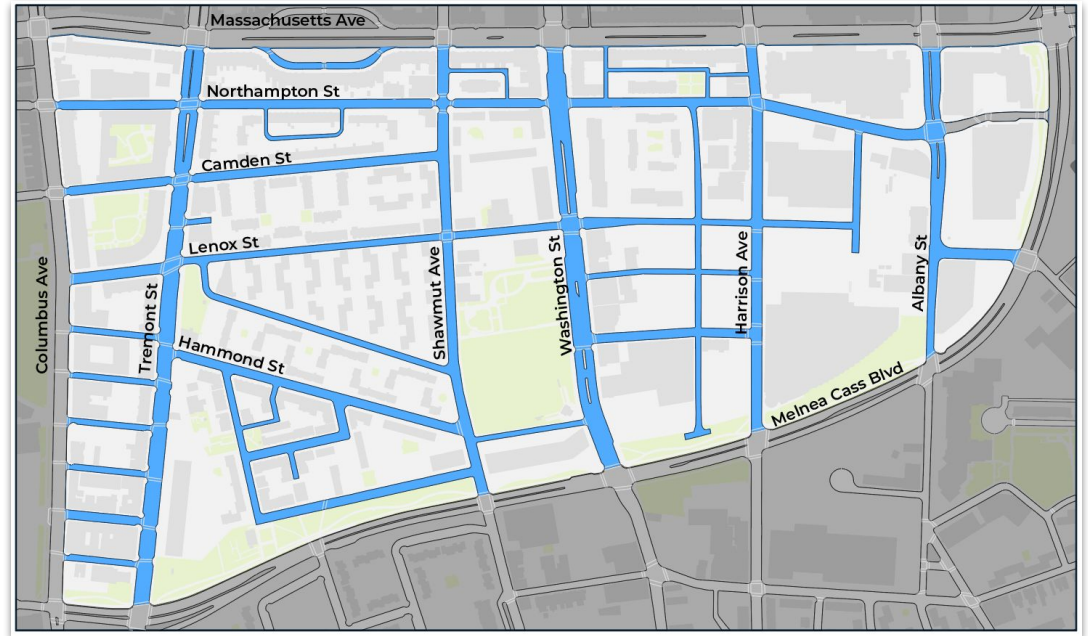
- ▶ Your name
- ▶ Your pronouns, if you feel comfortable sharing (for example: *she/her/hers, he/him/his, they/them/theirs, ze/hir/hir, etc*)
- ▶ How you're connected to communities in Lower Roxbury
- ▶ A memory about a tree, shrub, or other plant you've encountered outside

REFRESHER

PROJECT GOAL

Build a collaborative process with community members to:

- ▶ Highlight **neighborhood assets**
- ▶ Create **positive changes** to your streets in Lower Roxbury



The project area is bounded by, **but does not include** Columbus, Mass Ave., and Melnea Cass.

OUTREACH ADVISORY GROUP

Help us communicate and collaborate with the communities in Lower Roxbury right now.

EXPECTATIONS FOR BTD

Jen, Louisa, and BTD will:

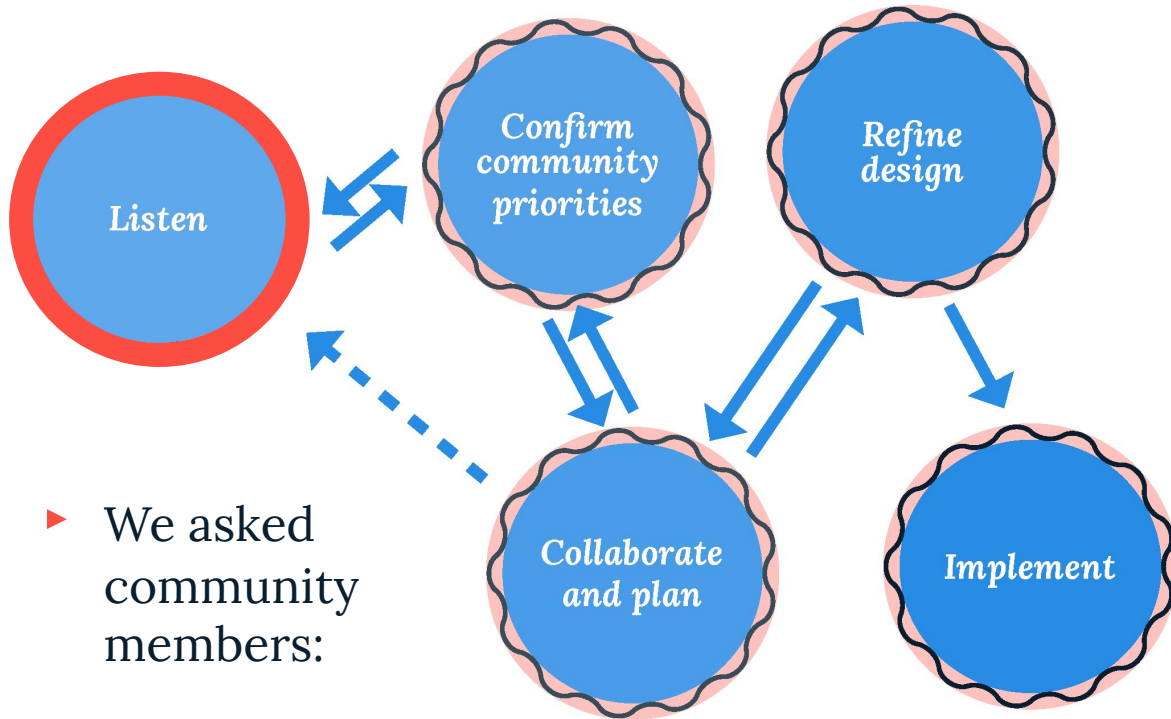
- ▶ Host outreach advisory group meetings quarterly, with ample notice.
- ▶ Be accountable to you with regular communication.
- ▶ Respectfully engage with the outreach advisory group and community members.
- ▶ Incorporate your advice and recommendations about outreach, as best as we are able.
- ▶ Make decisions transparently.

GROUP EXPECTATIONS

Members of the Outreach Advisory Group will:

- ▶ Make a good faith effort to attend outreach advisory group meetings.
- ▶ Engage respectfully with one other, with the project team, with community members.
- ▶ Share your knowledge and experience.
- ▶ Share back to your communities about the project.

Fall 2019 through 2020



► We asked community members:

- Where do you find joy in the neighborhood?
- What would you change about the streets?

What do you *love* about Lower Roxbury?

Take a moment to share your joy.

Where do you find joy?

Place one dot on the map. Place the matching one here →

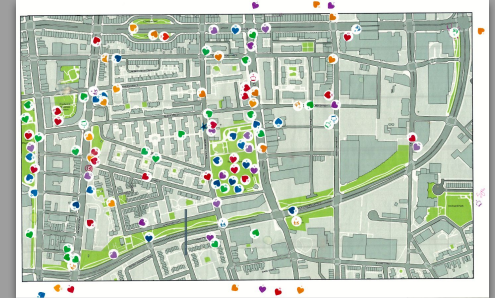


Write the name of the place here. _____

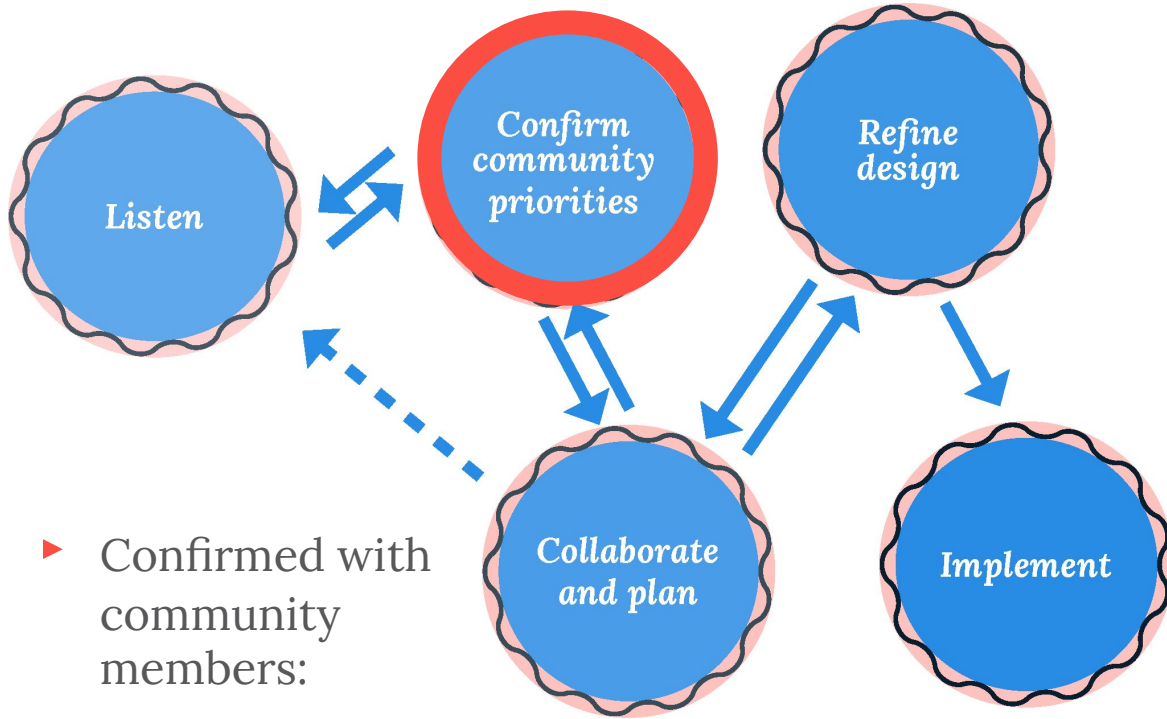
Tell us more about it.

Shops, peaceful, friends

 BOSTON TRANSPORTATION DEPARTMENT
Greg Rooney, Acting Commissioner

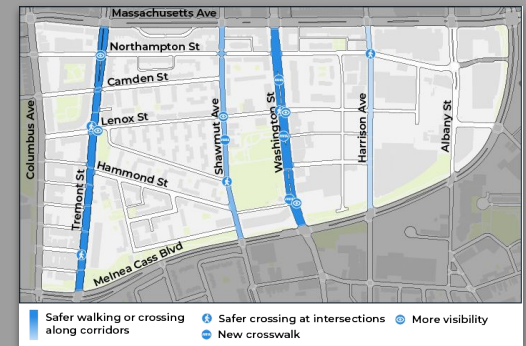


2021



► Confirmed with community members:

- What they would like to see changed
- That we weren't missing opportunities



PROJECT GOAL

You asked us to:

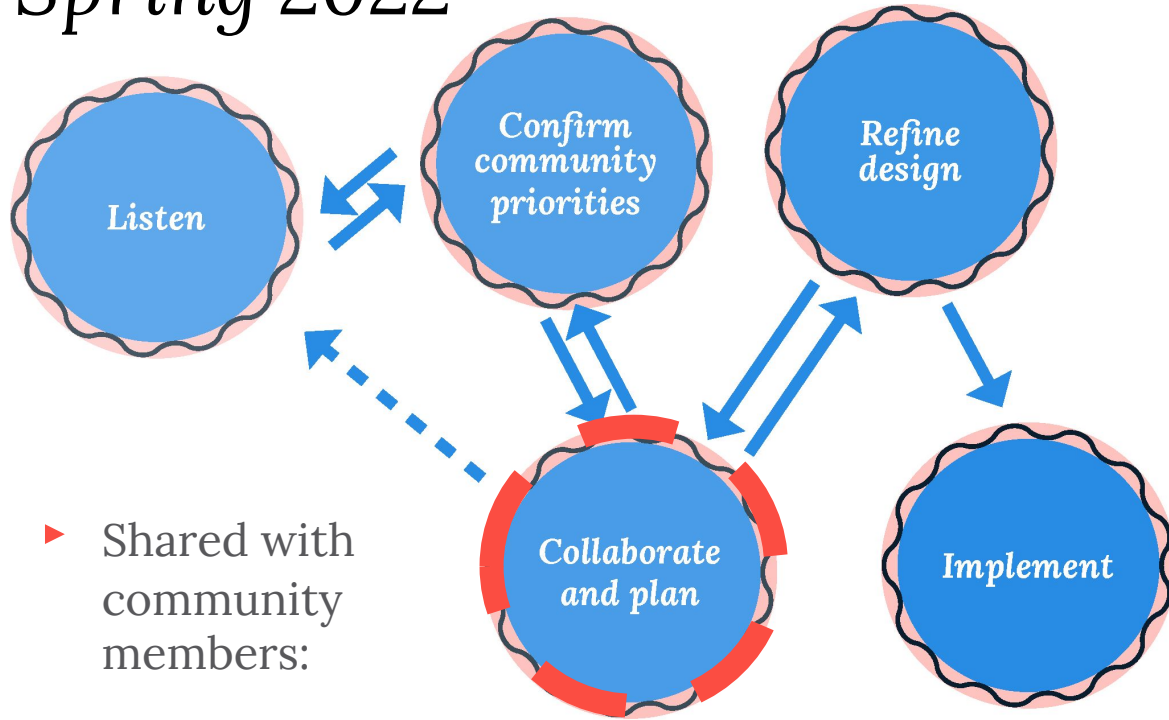
- Take a **broad look** at Lower Roxbury
- Listen to what the **people who live here** saw want for their community
- Help realize goals related to **transportation and safety**

We aim to build a collaborative process with community members to:

- Highlight **neighborhood assets**
- Create **positive changes** to your streets in Lower Roxbury

The project area is bounded by, but does not include Columbus, Mass Ave., and Melnea Cass.

Spring 2022



▶ Shared with community members:

- Which locations rose to the top as priorities
- Information about the tools we could use to make changes on the streets.

Este texto ha sido traducido al español y esta después del texto en inglés.

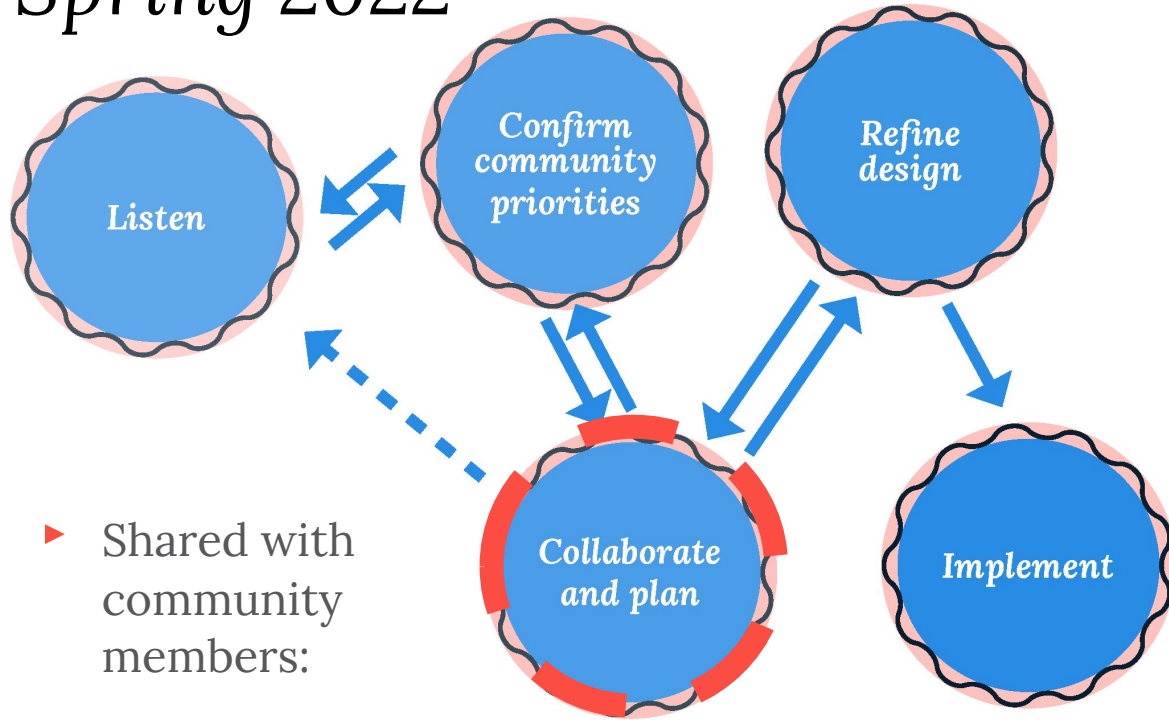
You've helped us identify locations for new crosswalks, traffic-calming features, and bike lanes in Lower Roxbury.

The City of Boston is working to enhance walking and biking for neighborhood residents. We met you in 2019 and 2020 to hear what you love in Lower Roxbury and where you envision changes to your streets. In 2021, we confirmed your priorities in virtual meetings, at events, and with a survey. Now, we want to report back on what we heard.

Here are the seven locations we've prioritized together.



Spring 2022



► Shared with community members:

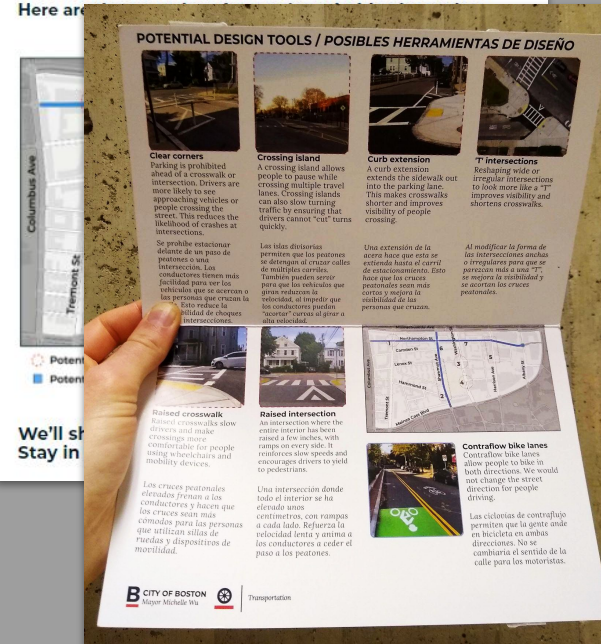
- Which locations rose to the top as priorities
- Information about the tools we could use to make changes on the streets.

Este texto ha sido traducido al español y está después del texto en inglés.

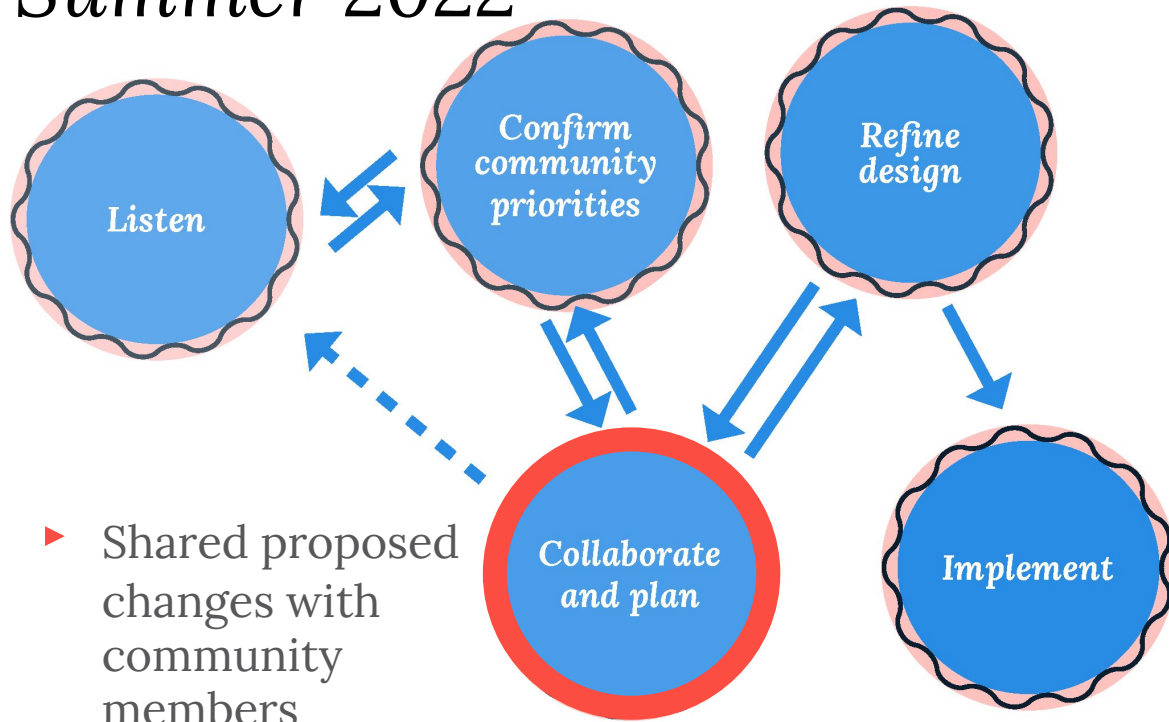
You've helped us identify locations for new crosswalks, traffic-calming features, and bike lanes in Lower Roxbury.

The City of Boston is working to enhance walking and biking for neighborhood residents. We met you in 2019 and 2020 to hear what you love in Lower Roxbury and where you envision changes to your streets. In 2021, we confirmed your priorities in virtual meetings, at events, and with a survey. Now, we want to report back on what we heard.

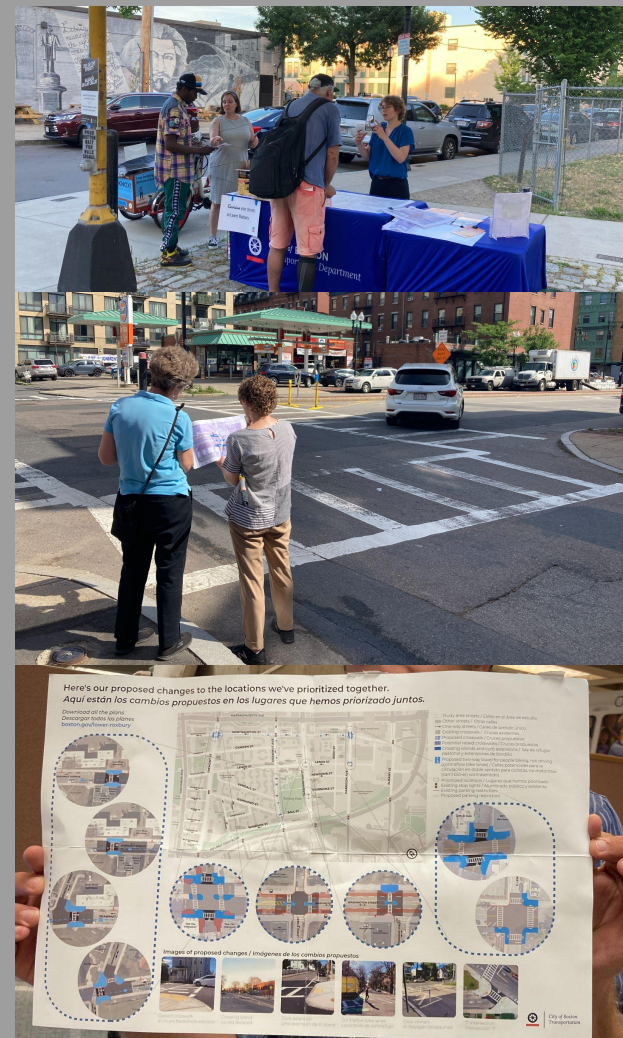
Here are



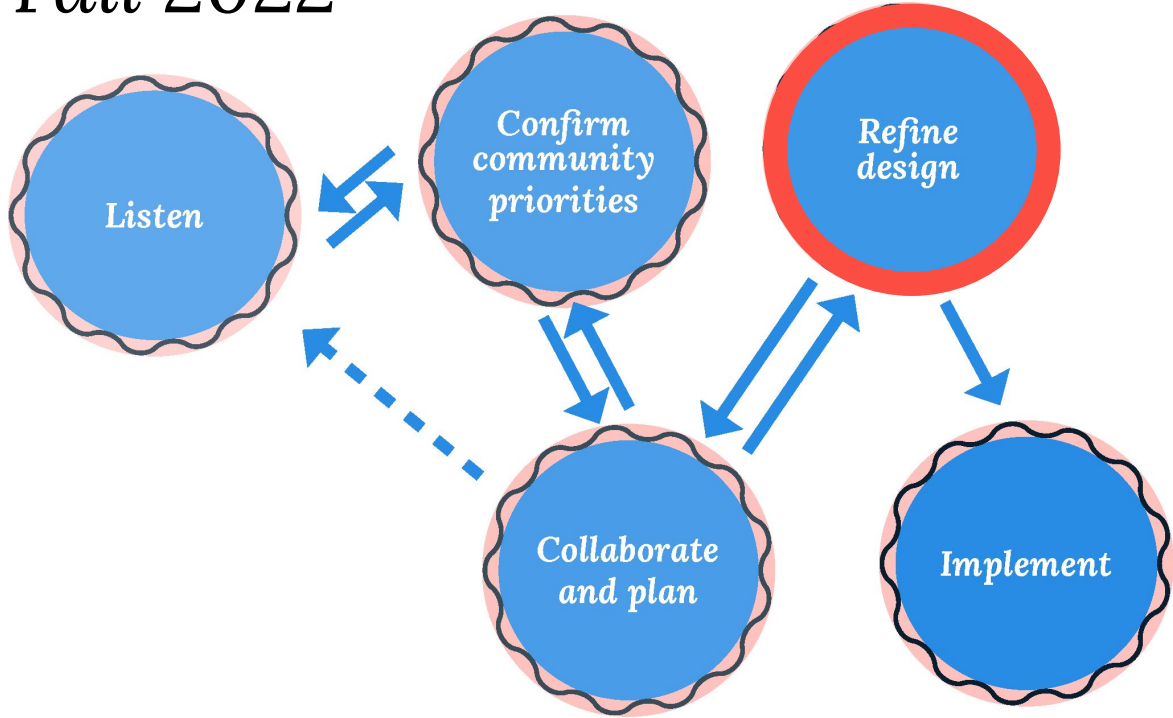
Summer 2022



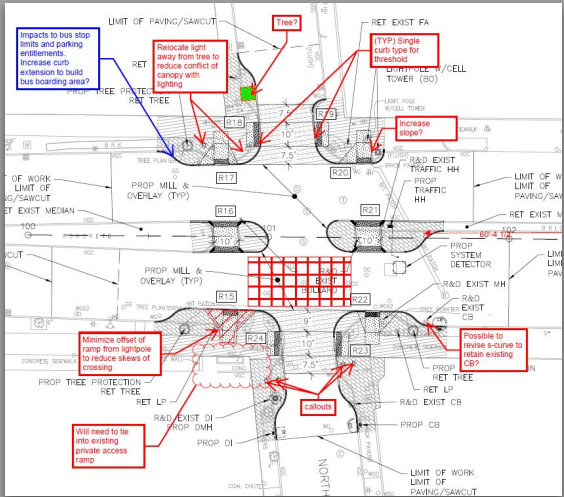
- ▶ Shared proposed changes with community members
- ▶ Heard what residents liked, had questions about, and how they felt about any trade-offs



Fall 2022



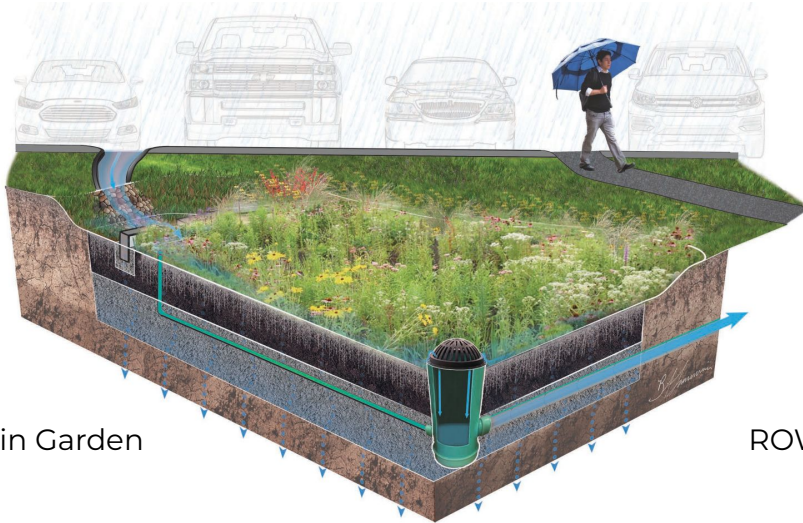
- ▶ Refined the designs based on feedback from public outreach and other City departments



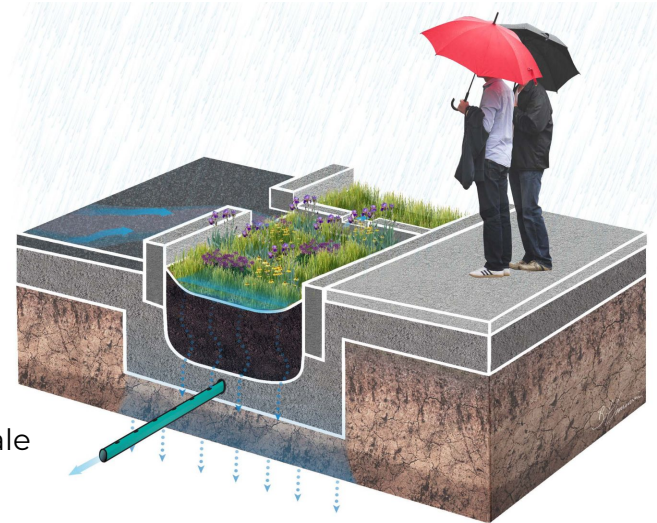
ADDITIONS TO PROJECT

GREEN INFRASTRUCTURE

- Green Infrastructure (“GI”) is an approach to water management that restores or mimics the natural water cycle.
- GI features features, like rain gardens and right-of-way bioswales, utilize natural hydrologic processes to capture, purify and infiltrate stormwater back into the ground.



Rain Garden



ROW Bioswale

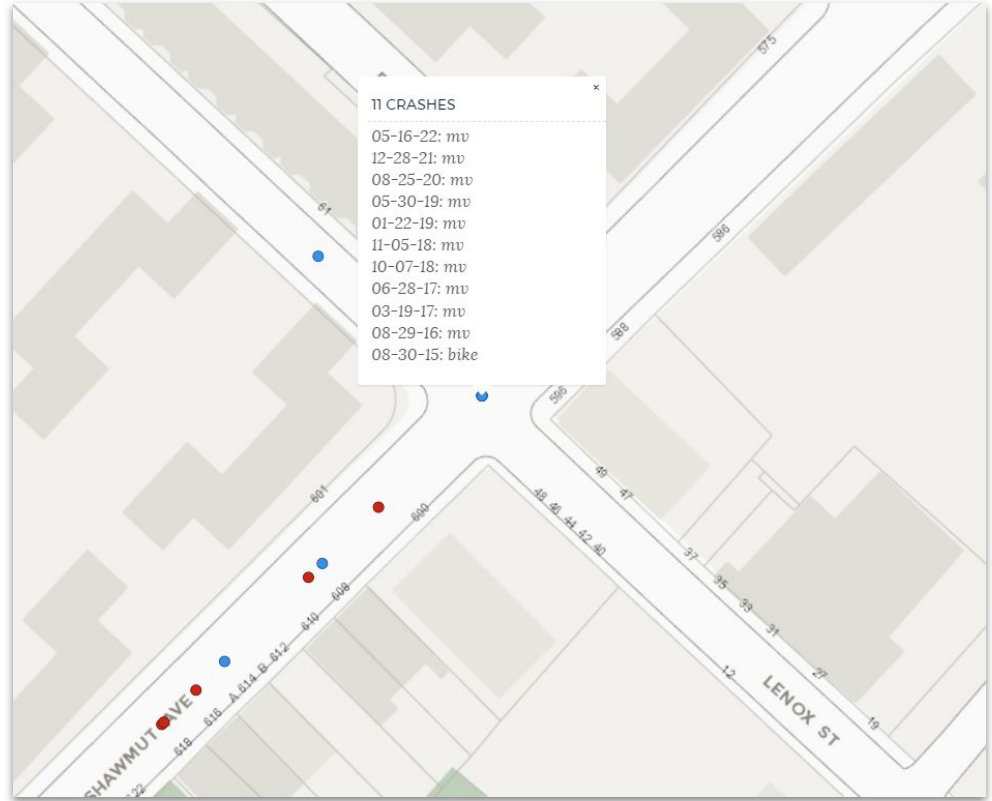






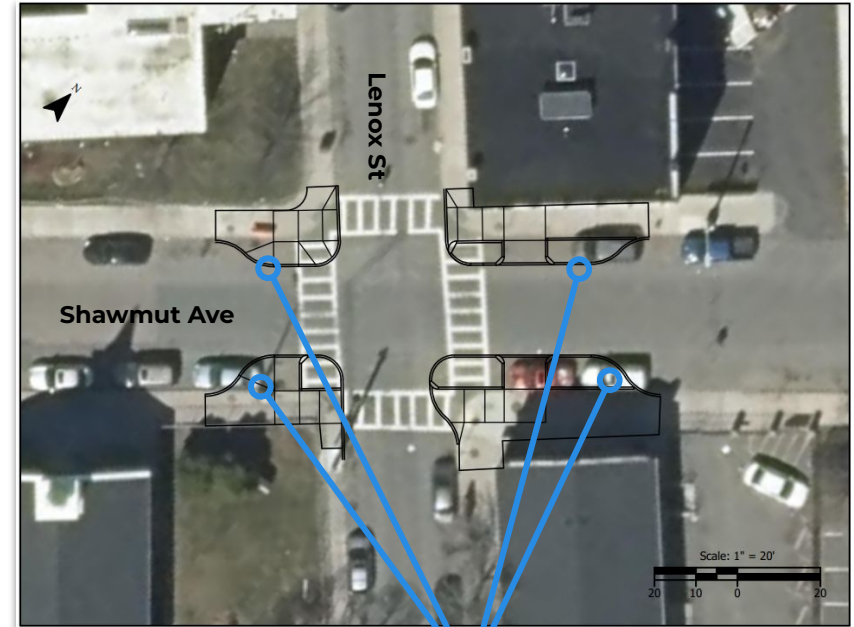
SHAWMUT AT LENOX

- ▶ Planning for the contraflow bike lane on Shawmut prompted us to evaluate whether a stop sign was needed
- ▶ We dug into crash data further and identified a trend of crashes we need to address



SHAWMUT AT LENOX

- ▶ We have field survey for this intersection and are now working on a design for curb extensions with accessible ramps
- ▶ This will impact 2-3 parking spaces
- ▶ It will make the intersection safer to cross for everyone people walking, biking, and driving)
- ▶ There might be an opportunity to incorporate green infrastructure (TBD)



Curb extensions
and ramps

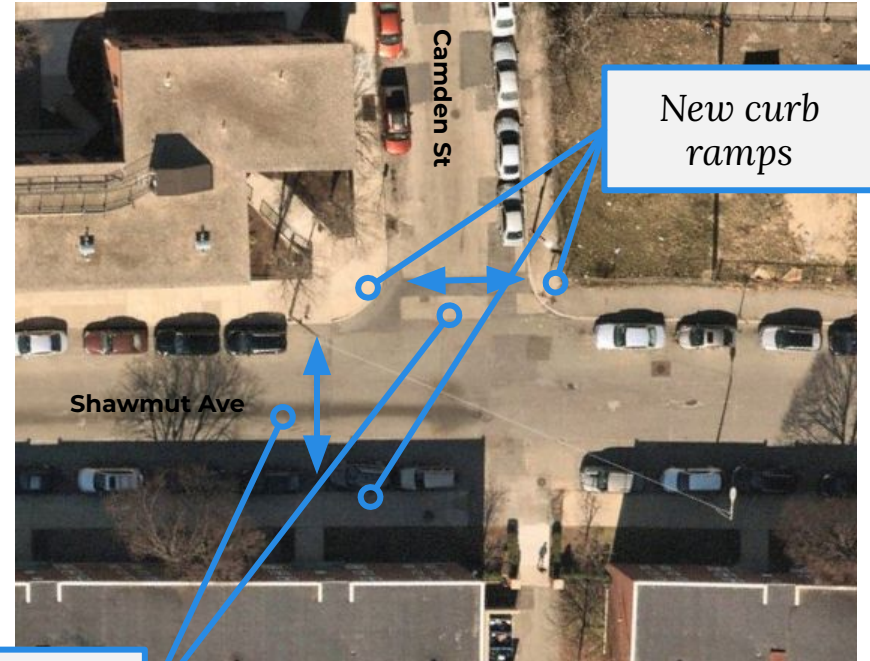
SHAWMUT AT CAMDEN

- ▶ There are no curb cuts at all at the intersection
- ▶ We had flagged this as something we would like to address if at all possible, while we had a crew doing work nearby
- ▶ While we don't have field survey at this intersection, our colleagues in Public Works have confirmed they could engineer compliant ramps during construction



SHAWMUT AT CAMDEN

- ▶ We also have the opportunity to add a high-visibility crosswalk across Shawmut
- ▶ This would impact 2 parking spaces
- ▶ It would provide a safe, accessible place to cross Shawmut between Northampton and Lenox



New curb ramps

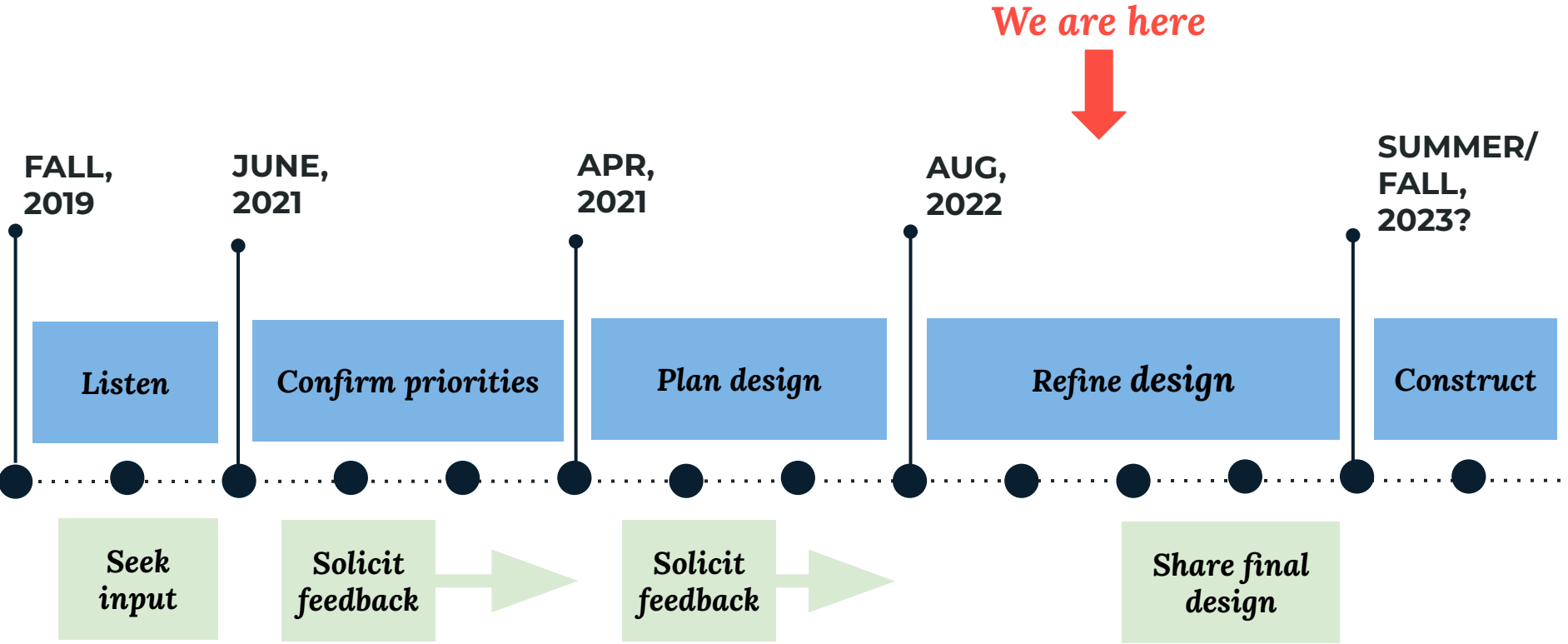
Crosswalks

OTHER RAMPS

- ▶ In 2021, the City settled a class action lawsuit to ensure that the City's sidewalk corners comply with the Americans with Disabilities Act and Section 504 of the Rehabilitation Act
- ▶ Over the next 10 years, the City is trying to make every curb ramp in the public right of way accessible
- ▶ As part of the City's transition plan, certain categories of capital projects, including ours, will also ensure all ramps are brought to ADA compliance
- ▶ Our Public Works colleagues are looking into whether these can be engineered during construction. If not, we will need to get field survey, which could take 2-3 months

NEXT STEPS

PROJECT TIMELINE



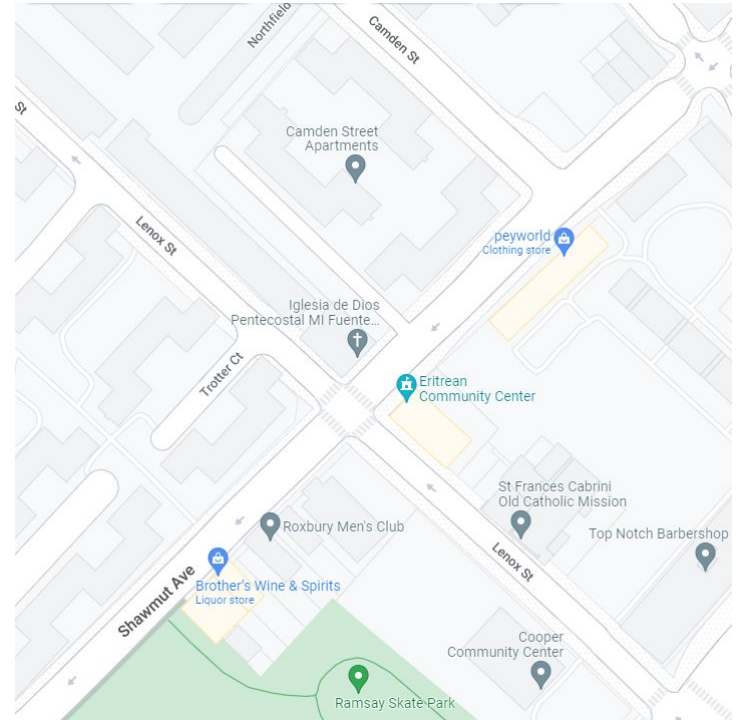
IMMEDIATE NEXT STEPS

- ▶ *Up to this point, the project team has been moving as expeditiously as possible to advance the design, with the goal of constructing the project in the next construction season (2023)*
- ▶ *At the same time, the unexpected additions to the project have created uncertainty about whether that is realistic.*
- ▶ *Rushing to make up time presents tradeoffs in the design and outreach. We're in the middle of figuring out the best way to proceed. Some questions we have for you are:*
 - **How much urgency do you sense in your communities around getting an update on the planned changes?**
 - **How much urgency do you sense in your communities around seeing changes in the ground next summer/fall?**

OUTREACH FOR INTERSECTIONS

Are these the right organizations to reach out to?

- ▶ *Eritrean Community Center*
- ▶ *Iglesia de Dios Pentecostal Mi Fuente de Vida*
- ▶ *Camden/Lenox Apartments*
- ▶ *Roxse Homes*
- ▶ *Mandela Homes*
- ▶ *Shawmut Community Church of God*
- ▶ *Roxbury Men's Club*
- ▶ *Crosstown Church International*
- ▶ *Church of St. Augustine and St. Martin*
- ▶ *Cooper Community Center*



OUTREACH FOR GREEN INFRASTRUCTURE

- ▶ We're excited to be able to incorporate Green Infrastructure in this project and we're optimistic that residents will be supportive, too
- ▶ That said, elements like curb extensions will look different than what we've done elsewhere, and from what we've shown in earlier stages of outreach
- ▶ *Do you have any advice about how we engage communities in Lower Roxbury about how we're incorporating Green Infrastructure in this project?*



RECEIVING FEEDBACK: FINAL ROUND

Ideas we've shared before - what do you think?

- ▶ *Share materials online explaining the final design*
- ▶ *Continue hosting virtual office hours*
- ▶ *Host another round of pop-ups on the street (maybe hot chocolate?!)*
- ▶ *(If possible) spray paint outline of proposed crosswalks and curb extensions onto the street. Hang flyers nearby explaining: "Safer Street Coming Soon! Learn More Here"*

Transportation Safety Improvements Coming Soon! **Próximamente se realizarán mejoras de seguridad en las calles.**

The City of Boston is working on improving street safety in your neighborhood. We work with residents to understand traffic safety concerns. We then propose changes to street design to improve safety and quality of life.

On Milton Avenue at Rockwell Street and Mora Street, we will install a raised crosswalk to slow speeds and make the crossing safer. A raised crosswalk is the same level as the sidewalk. Construction will take 3 to 4 weeks to complete. You may see temporary signage while construction is ongoing.

En las próximas semanas, en la ciudad de Boston, se realizarán mejoras en la seguridad del transporte y cambios en el diseño de las calles residenciales menos concurridas y transitadas de su vecindario.

En Milton Avenue y Rockwell Street y Mora Street, construiremos un cruce peatonal elevado para que los conductores reduzcan la velocidad y el cruce sea más seguro. Agregar un paso peatonal elevado. El paso peatonal elevado debe ser al mismo nivel que la acera.



For more information, contact/Para más información, por favor contacte:
✉ slowstreets@boston.gov ☎ (617) 635-1347
🌐 boston.gov/slow-streets/dun

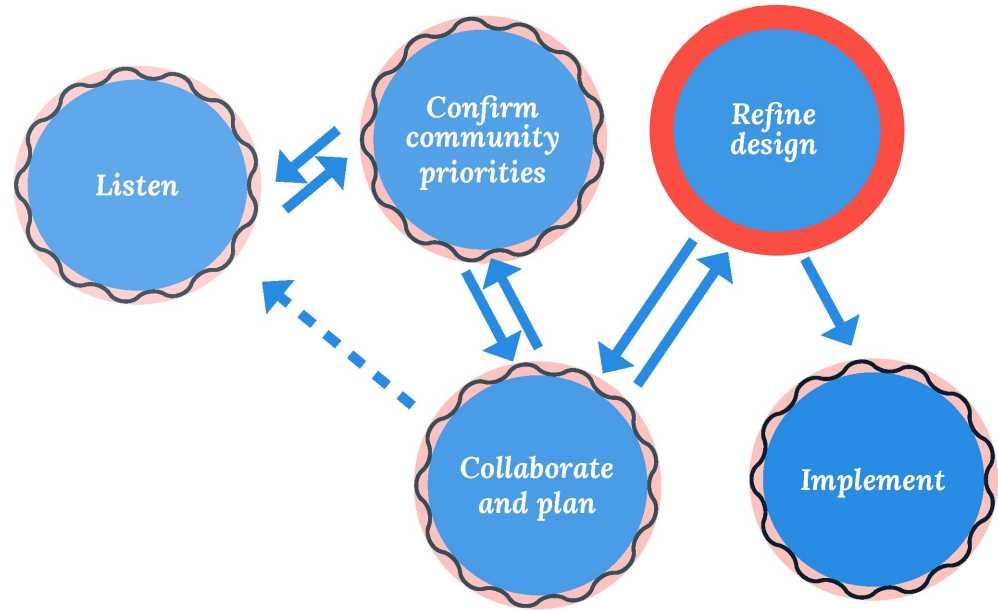
B CITY OF BOSTON
Mayor Kim Janey

B BOSTON TRANSPORTATION DEPARTMENT
Greg Rooney, Commissioner

LET'S DISCUSS!

NEXT STEPS FOR THIS GROUP

- ▶ Meet again:
 - **March 16th at 11:00am**
- ▶ Email to you re: today's meeting notes
- ▶ Keep you posted!



MEETING EVALUATION

OUTCOMES

- ▶ Share a few of the more significant changes to the plans since our summer outreach
- ▶ Learn about new Green Infrastructure initiatives
- ▶ Review next steps for the project
- ▶ Confirm outreach strategy for this next phase

QUESTIONS

- ▶ *How did we do as a group at achieving our desired outcomes for the meeting?*
- ▶ *How did the project team do at guiding the process?*
- ▶ *Any recommendations for the next meeting?*

CONCLUSION
