



Existing conditions

Abercrombie & Fitch

51/53 HEREFORD & 321 NEWBURY ST.
BOSTON, MA 02115 USA

#1			DATE: 11/22/2022
----	--	--	---------------------



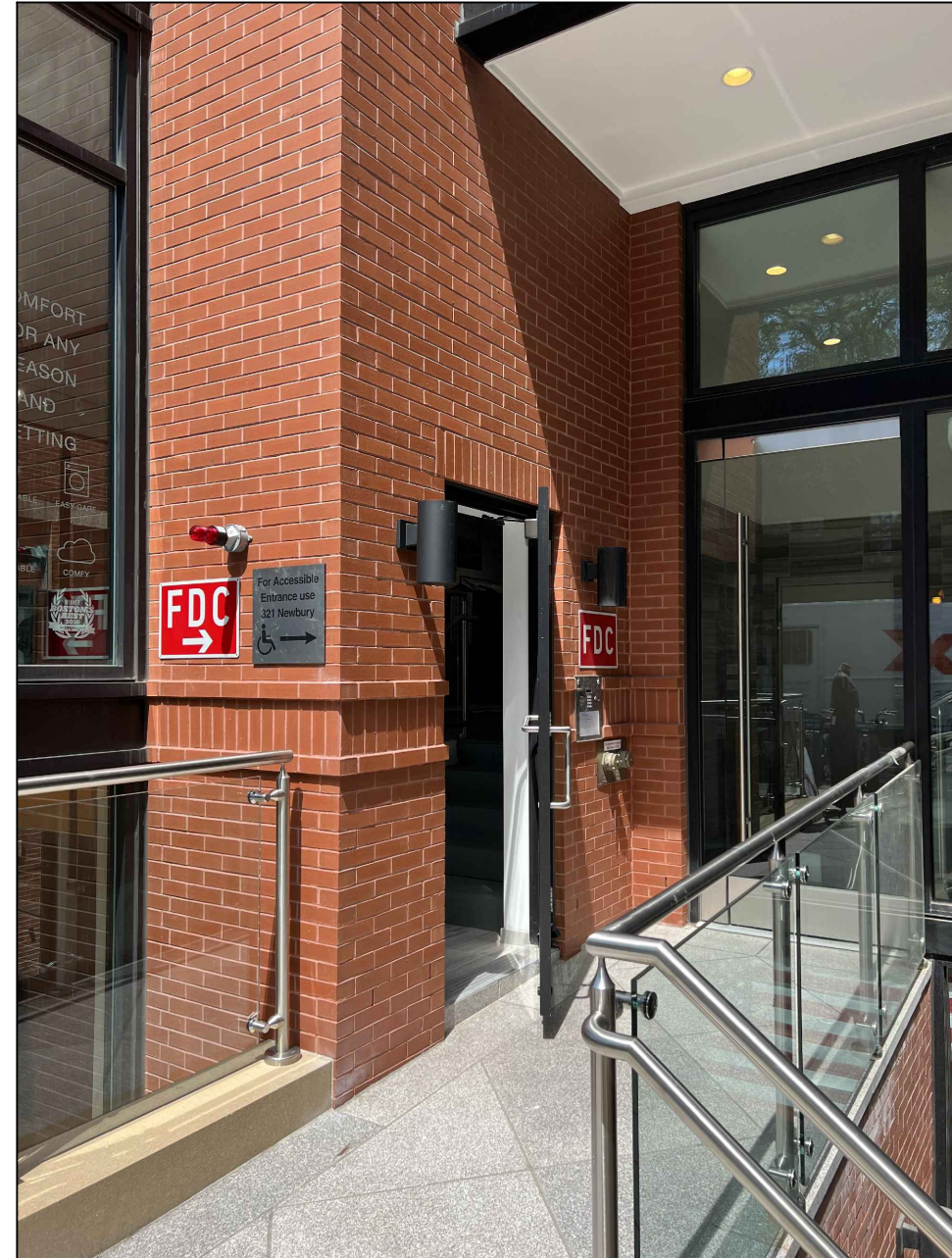
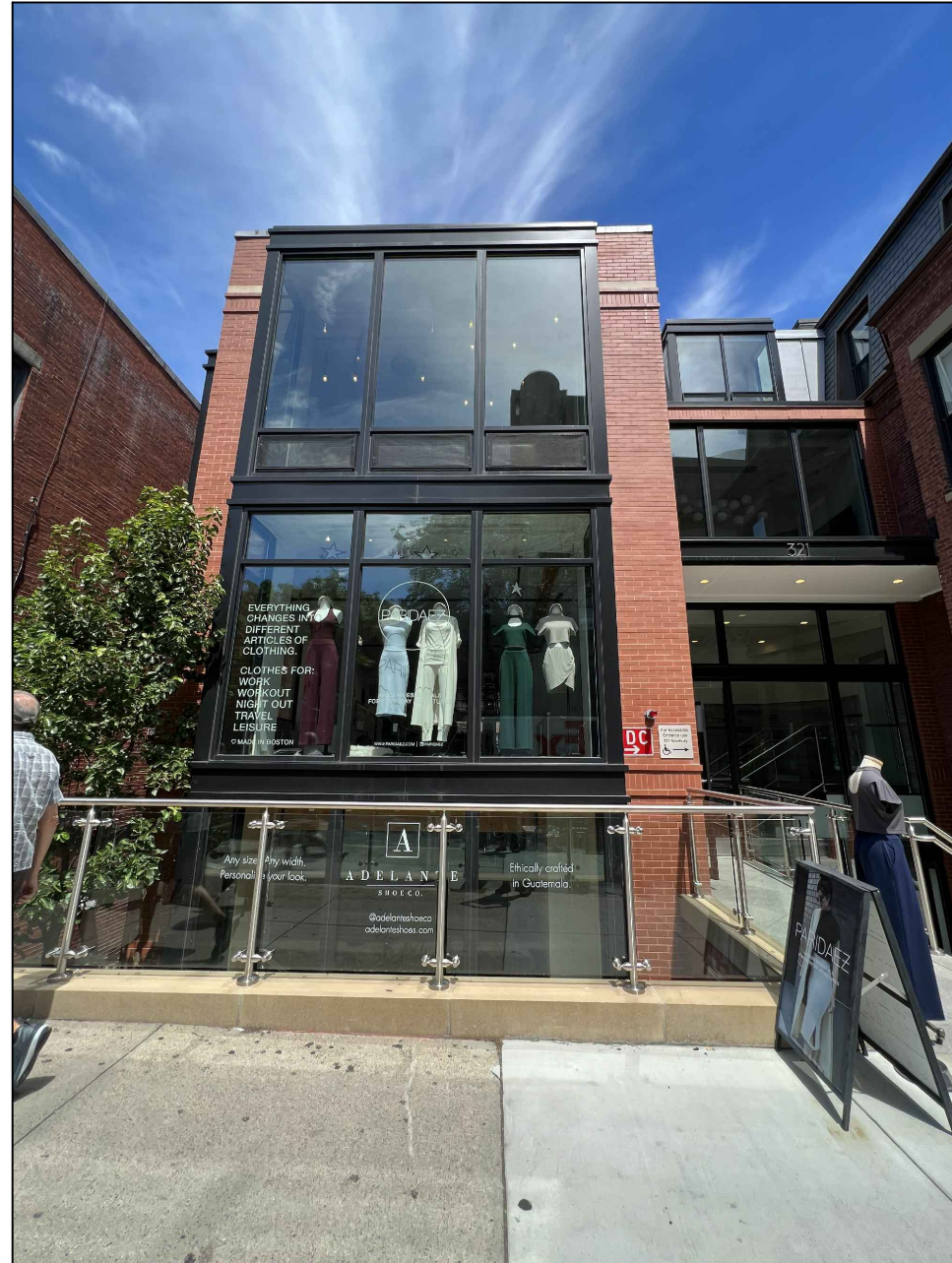
Existing conditions

Abercrombie & Fitch

51/53 HEREFORD & 321 NEWBURY ST.
BOSTON, MA 02115 USA

#2

DATE:
11/22/2022



Existing conditions

Abercrombie & Fitch

51/53 HEREFORD & 321 NEWBURY ST.
BOSTON, MA 02115 USA

#3			DATE: 11/22/2022
----	--	--	---------------------



Existing conditions

Abercrombie & Fitch

51/53 HEREFORD & 321 NEWBURY ST.
BOSTON, MA 02115 USA

#4

DATE:
11/22/2022



Existing conditions

Abercrombie & Fitch

51/53 HEREFORD & 321 NEWBURY ST.
BOSTON, MA 02115 USA

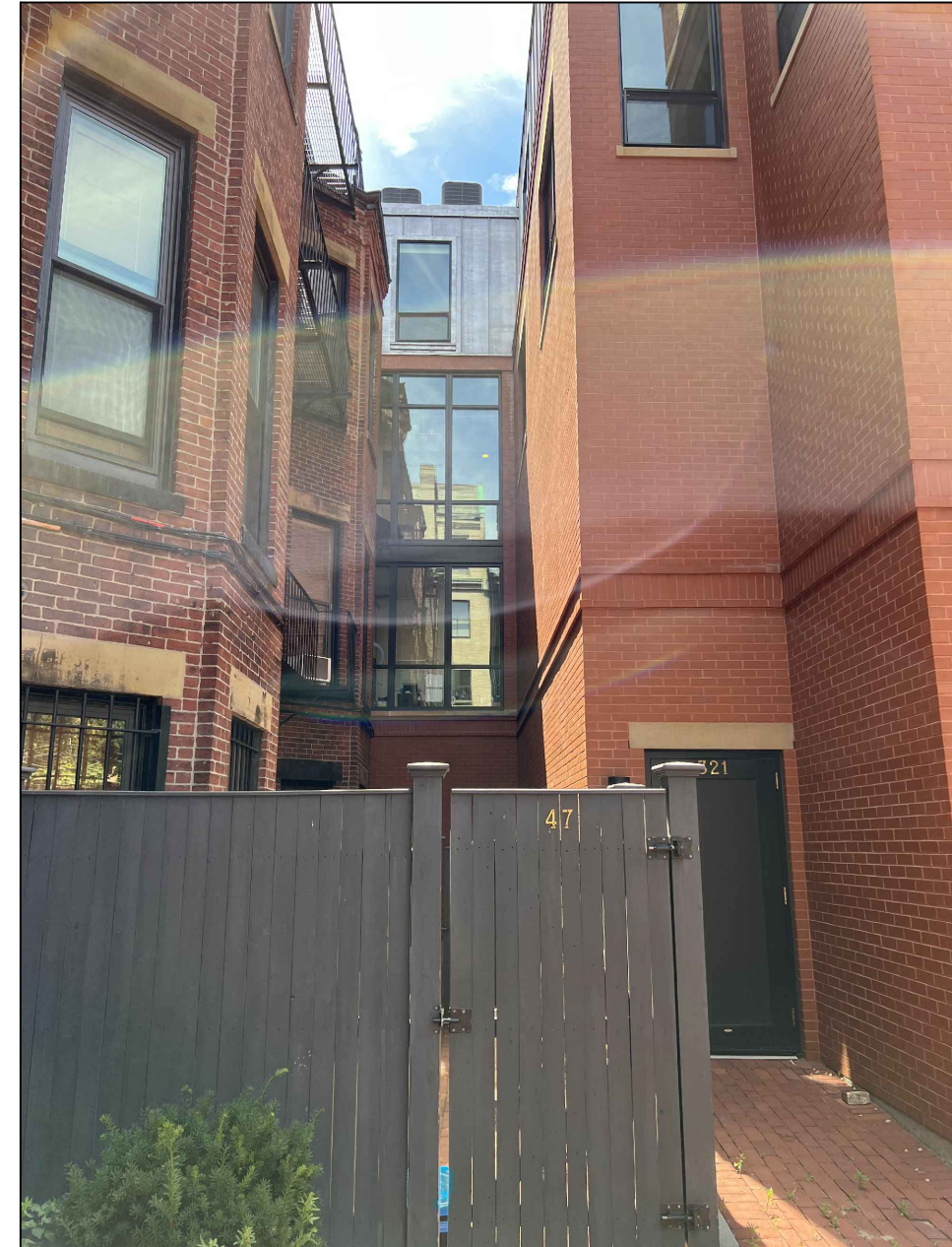
#5			DATE: 11/22/2022
----	--	--	---------------------



Existing conditions

Abercrombie & Fitch
 51/53 HEREFORD & 321 NEWBURY ST.
 BOSTON, MA 02115 USA

#6		DATE: 11/22/2022
----	--	---------------------



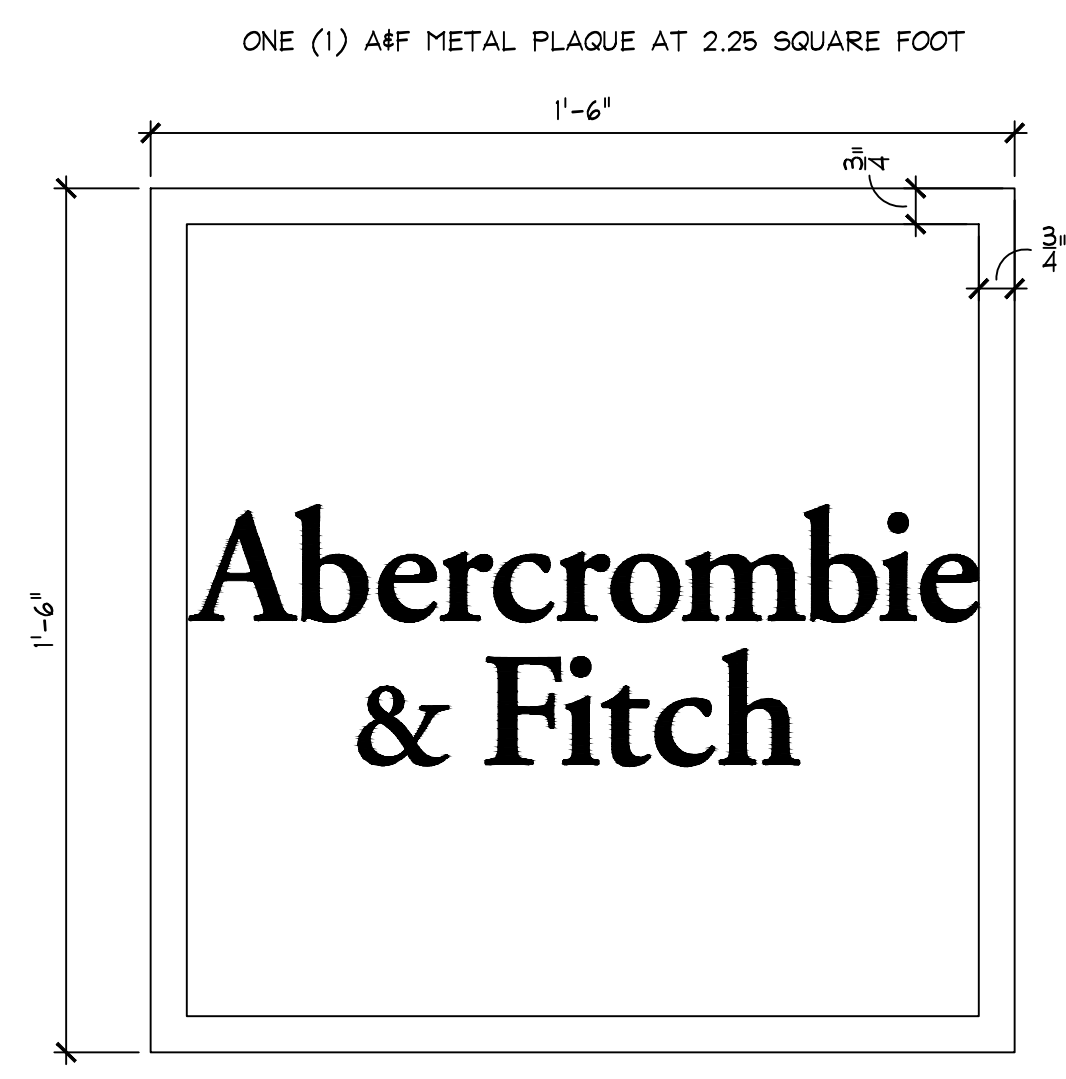
Existing conditions

Abercrombie & Fitch

51/53 HEREFORD & 321 NEWBURY ST.
BOSTON, MA 02115 USA

#7

DATE:
11/22/2022

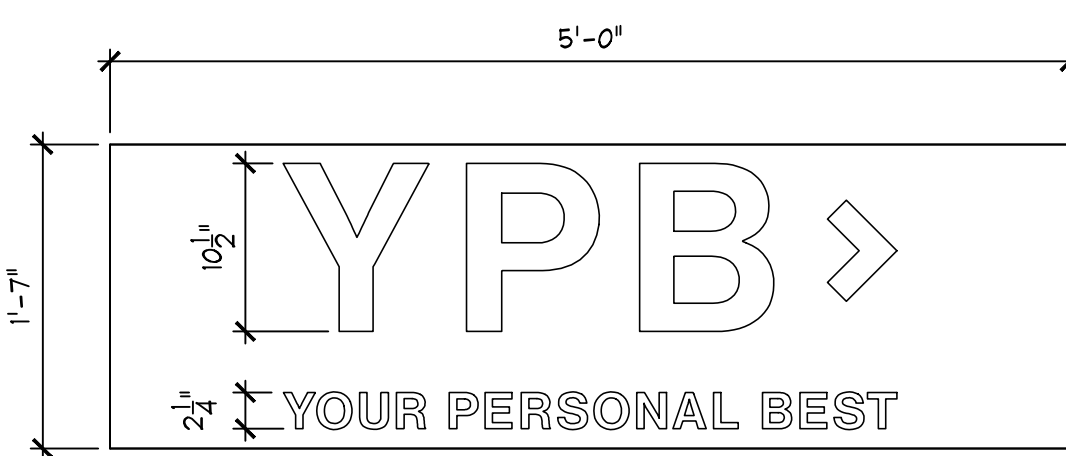


2-1/2" RAISED POWDER COATED WHITE LETTERS ON BLACK POWDER COATED FIELD AND RAISED FRAME

V A&F METAL PLAQUE

AB.00 SCALE: 3" = 1'-0"

ONE (1) YPB METAL BOX SIGN AT 7.9 SQUARE FOOT



10-1/2" EDGE-LIT RAISED WHITE LETTERS ON BLACK POWDER COATED BOX. BOX 5'-0" WIDE 1'-7" TALL AND 6" DEEP

U YPB ILLUMINATED BOX SIGN

AB.00 SCALE: 1" = 1'-0"



Q EXTERIOR ELEVATION - HEREFORD ST.

A2.01 SCALE: 1/4" = 1'-0"

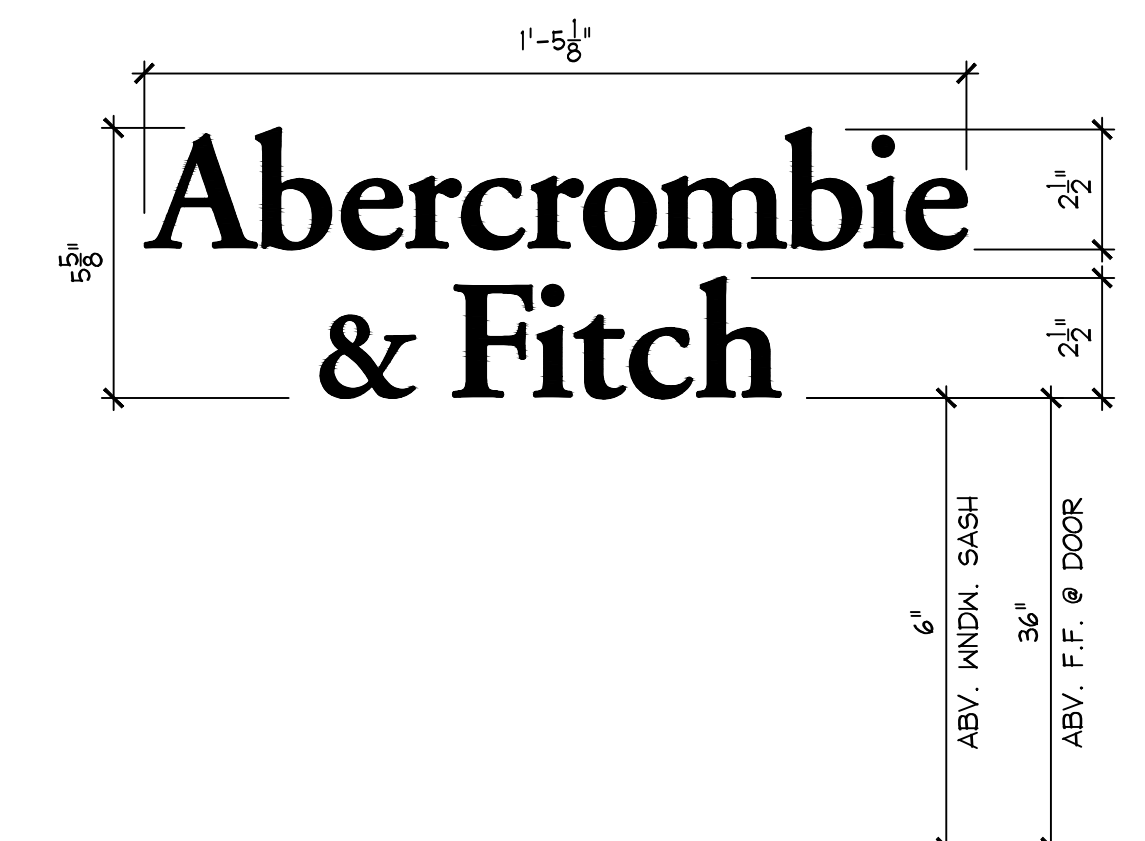
GENERAL NOTES

- A. THESE EXTERIOR ELEVATIONS ARE EXISTING AND NO MODIFICATIONS ARE TO BE MADE IN THIS PROJECT EXCEPT FOR THE ADDITION OF STORE SPECIFIC SIGNAGE AS SHOWN.
- B. OWNER'S SIGN VENDOR IS RESPONSIBLE FOR ALL SIGNAGE SHOP-DRAWINGS INCLUDING ATTACHMENT DETAILS.
- C. SEE ELECTRICAL PLANS FOR CIRCUITS PROVIDING POWER TO ILLUMINATED SIGNAGE.
- D. SIGNAGE ATTACHED TO BRICK SHALL USE LEAD SLEEVE ANCHORS OR DRILLED EPOXY ANCHORS.

CODED NOTES

- 1. INTERIOR SIDE OF WINDOW AND DOOR GLAZING SHOWN SHADED TO RECEIVE 3M ULTRA 8800 (8MIL 0.20MM THICK) TRANSPARENT SAFETY FILM.
- 2. EXTERIOR SIDE OF DOOR GLAZING SHOWN SHADED TO RECEIVE 3M FASARA GLASS FINISHES, NATURAL, SHIGURE SH2BKSG FILM (88 MICRONS THK., VISIBLE LIGHT TRANSMITTANCE 15%, UV TRANSMITTANCE 0%).
- 3. WHITE VINYL, INTERIOR APPLIED ABERCROMBIE & FITCH DECAL. SEE DETAIL C/A8.00. SILVER LEAF VINYL/MIRROR CHROME VINYL REVERSE MOUNTED TO EXISTING WINDOWS FACETED PRISMATIC SILVER LEAF.
- 4. WHITE VINYL, INTERIOR APPLIED YPB DECAL. SEE DETAIL B/A8.00. SILVER LEAF VINYL/MIRROR CHROME VINYL REVERSE MOUNTED TO EXISTING WINDOWS FACETED PRISMATIC SILVER LEAF.
- 5. YPB BOX SIGN WITH 10-1/2" x 2-1/2" TALL WHITE LETTERS. LETTERS TO BE RAISED 1/2". BLACK METAL BOX TO BE 5'-0" WIDE BY 1'-7" TALL AND 6" DEEP, APPROX. 7.9 SQUARE FEET. SEE DETAIL U/A8.00

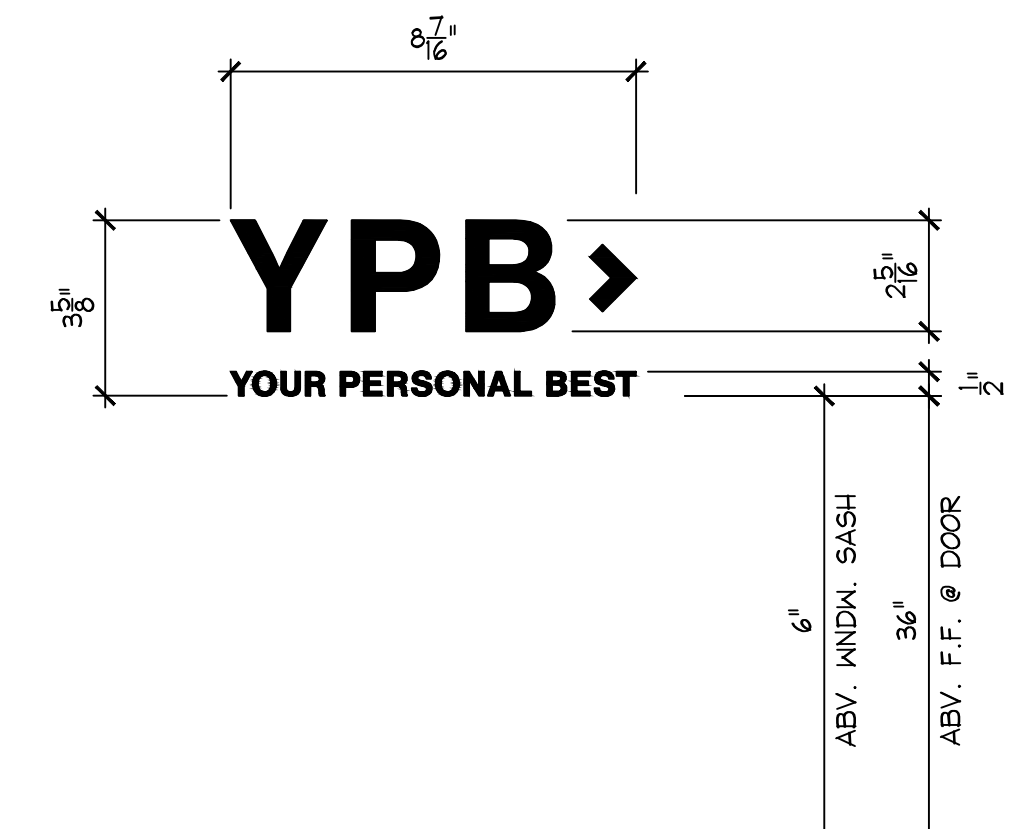
TWENTY (20) A&F DECALS AT .66 SQUARE FOOT EACH = 13.2 SQUARE FEET TOTAL.



C A&F WINDOW DECAL - TYP.

AB.00 SCALE: 3" = 1'-0"

THIRTEEN (13) YPB DECALS AT .22 SQUARE FOOT EACH = 2.86 SQUARE FEET TOTAL.



B YPB WINDOW DECAL - TYP.

AB.00 SCALE: 3" = 1'-0"

NEWBURY ST. ELEVATION - TOTAL LINEAR FEET - 77'-6"
SIGNAGE CODE ALLOWS A MULTIPLIER OF 2 WHEN 0'-99' FROM CENTERLINE OF ROAD.
THUS NEWBURY ST. ALLOWABLE SIGNAGE = 155 SQUARE FEET.
NEWBURY ST. GLAZING = 552 SQUARE FEET.
NEWBURY ST. GLAZING @ 30% = 165.6 S.F. ALLOWED

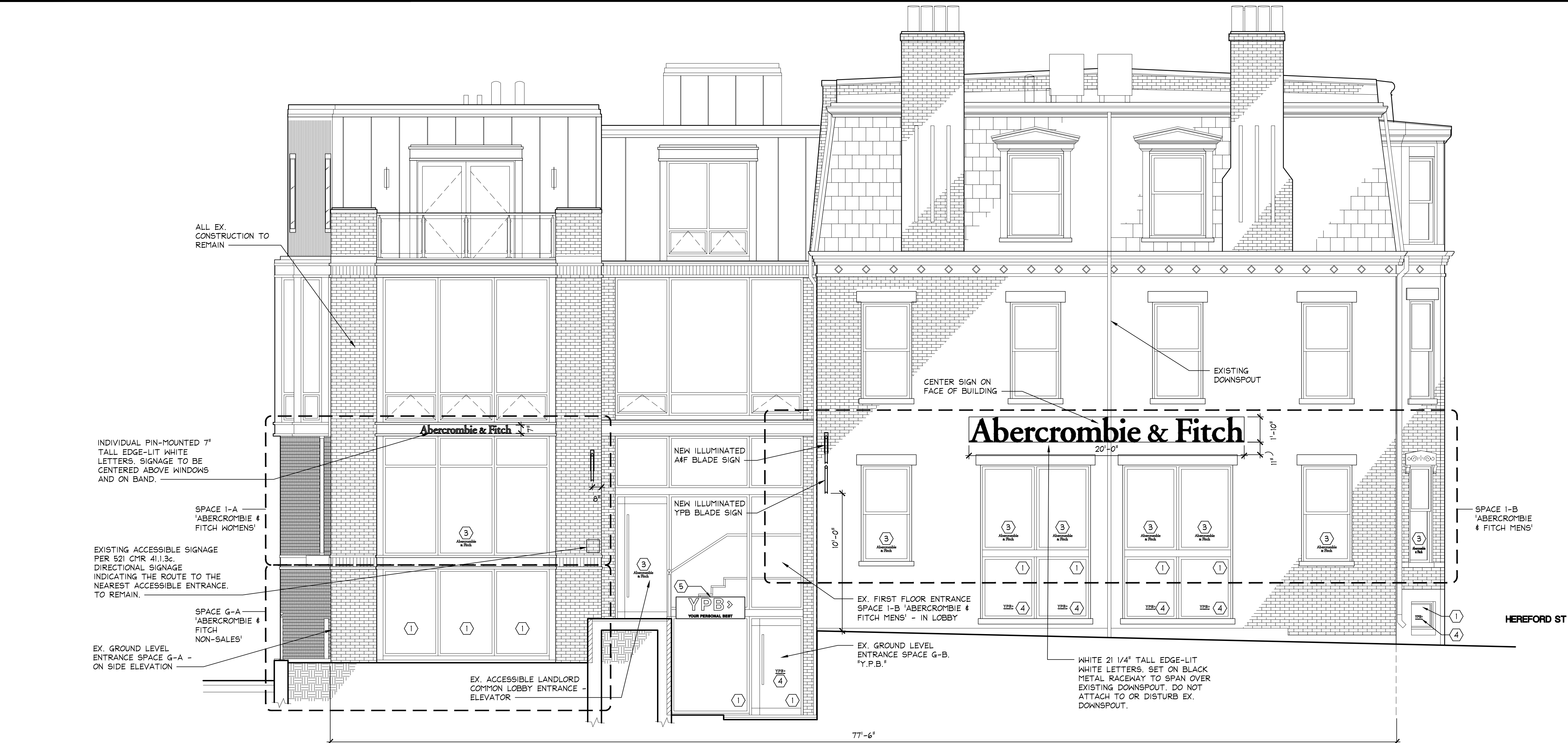
LARGE A&F BOX SIGN	=	36.6 S.F.
A&F BLADE SIGN	=	6.0 S.F.
(14) A&F VINYL DECALS @ .66 S.F. EA.	=	9.24 S.F.
A&F PIN-MOUNTED LETTERS	=	4.00 S.F.
YPB BOX SIGN	=	7.9 S.F.
YPB BLADE SIGN	=	6.0 S.F.
(7) YPB VINYL DECALS @ .22 S.F. EA.	=	1.54 S.F.
TOTAL SIGNAGE NEWBURY ST.	=	71.28 S.F.

HEREFORD ST. ELEVATION - TOTAL LINEAR FEET - 37'-6"
SIGNAGE CODE ALLOWS A MULTIPLIER OF 2 WHEN 0'-99' FROM CENTERLINE OF ROAD.
THUS HEREFORD ST. ALLOWABLE SIGNAGE = 75 SQUARE FEET.
HEREFORD ST. GLAZING = 129 SQUARE FEET.
HEREFORD ST. GLAZING @ 30% = 38.7 S.F. ALLOWED

A&F TRANSOM VINYL DECAL	=	4.0 S.F.
A&F PLAQUE SIGN	=	2.25 S.F.
(6) A&F VINYL DECALS @ .66 S.F. EA.	=	3.96 S.F.
(6) YPB VINYL DECALS @ .22 S.F. EA.	=	1.32 S.F.
TOTAL SIGNAGE HEREFORD ST.	=	10.29 S.F.

A SIGNAGE SQUARE FOOTAGES

AB.00 SCALE: N.T.S.

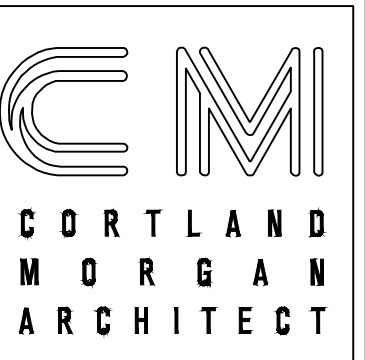


S EXTERIOR ELEVATION - NEWBURY ST.

A2.01 SCALE: 1/4" = 1'-0"



ABERCROMBIE & FITCH CO.
6301 FITCH PATH
NEW ALBANY, OHIO 43054
614-283-6500



CORTLAND MORGAN, ARCHITECT
CORTLAND MORGAN, ARCHITECT, AIA
70 N. FIELDER RD.
ARLINGTON, TX 76012
PHONE: (817) 635-5496
PROJECT ARCHITECT: CORTLAND MORGAN
E-MAIL: TRICIA@CM.AIA.NET

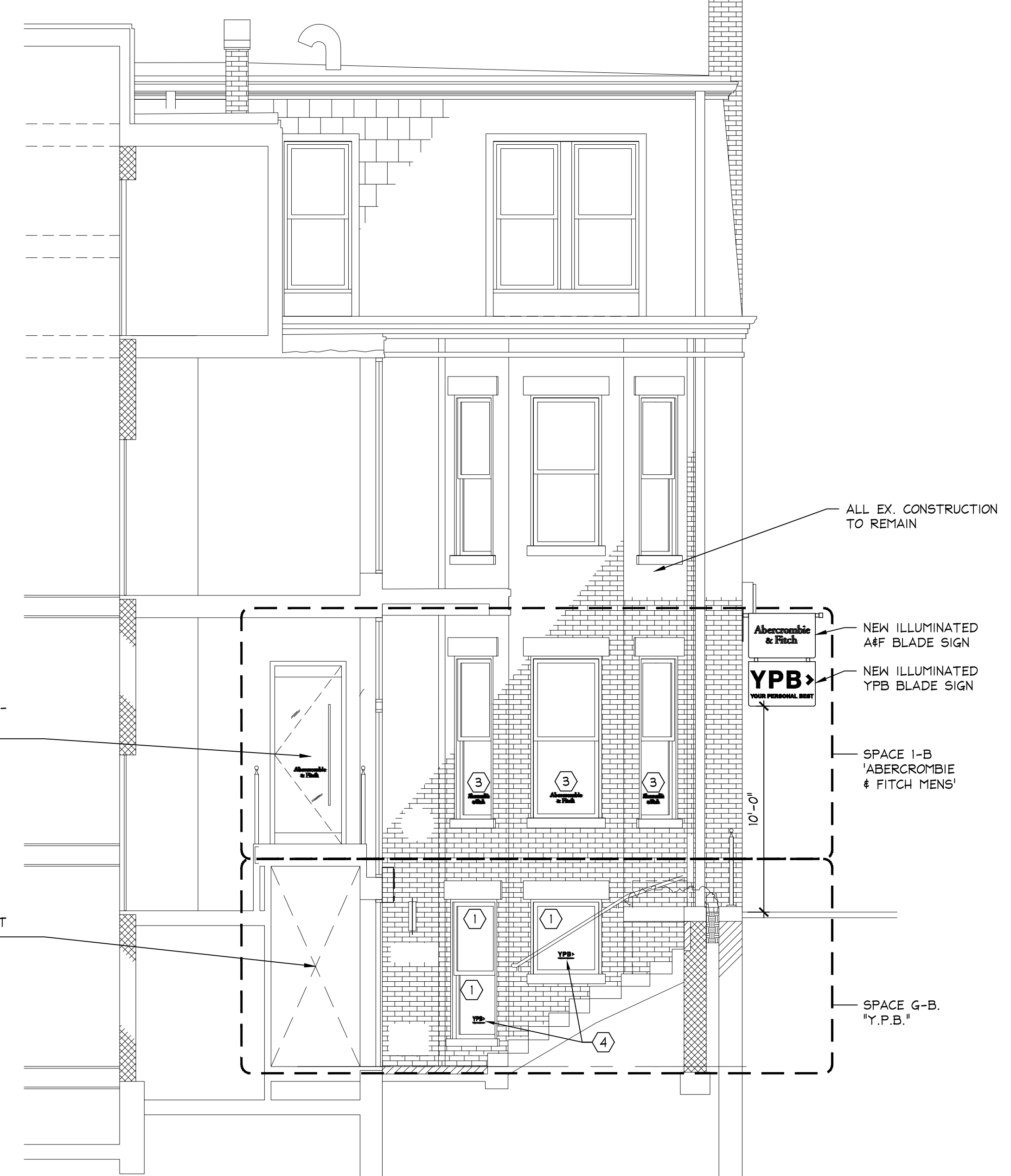
321 NEWBURY

51/53 HEREFORD ST.
BOSTON, MA 02115
STORE # A11336

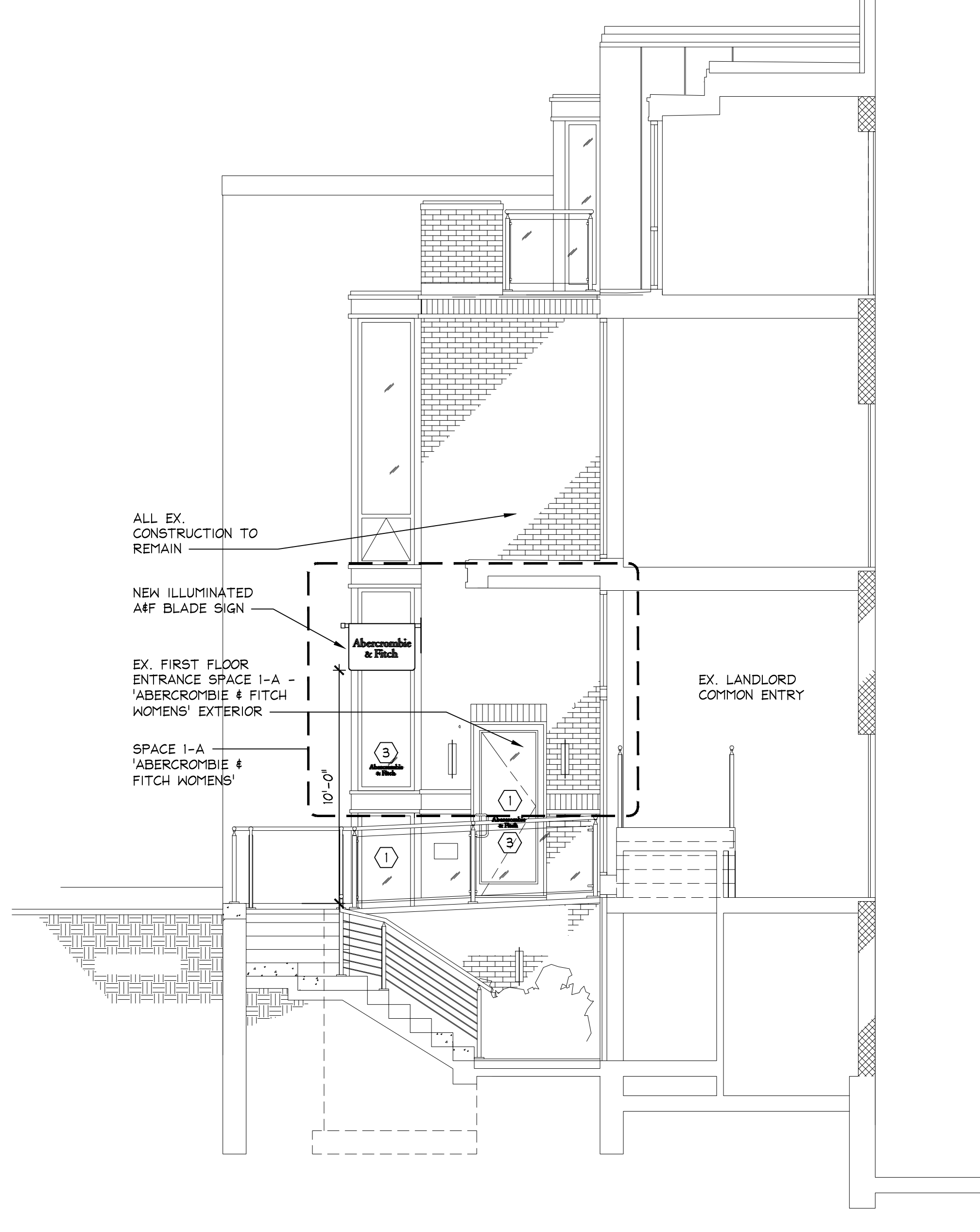
Project No: T&D.
Drawn By: STAFF/CM
Date: Issue
11-22-22 BRAC SUBMISSION

EXTERIOR ELEVATIONS

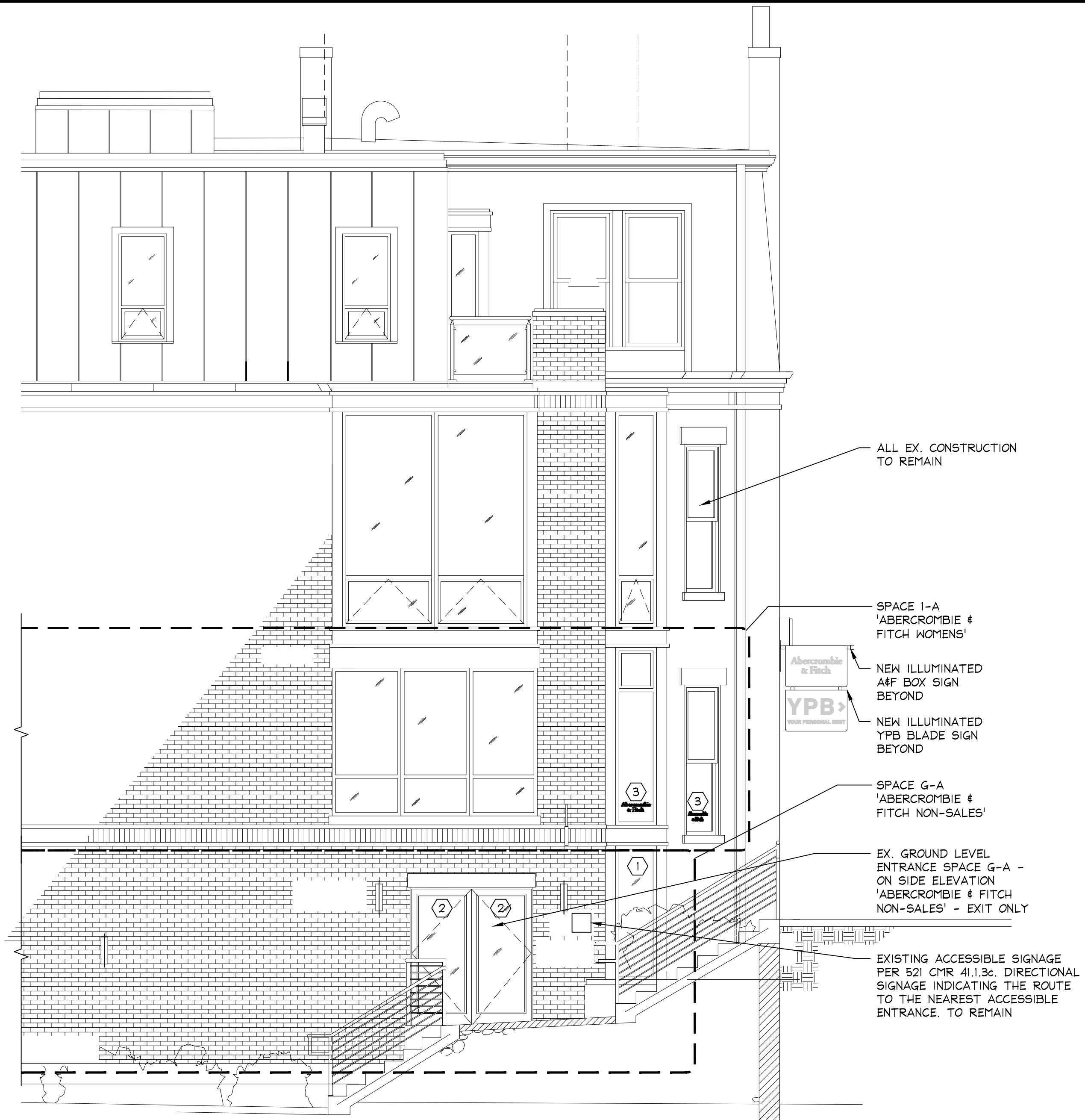
A8.00



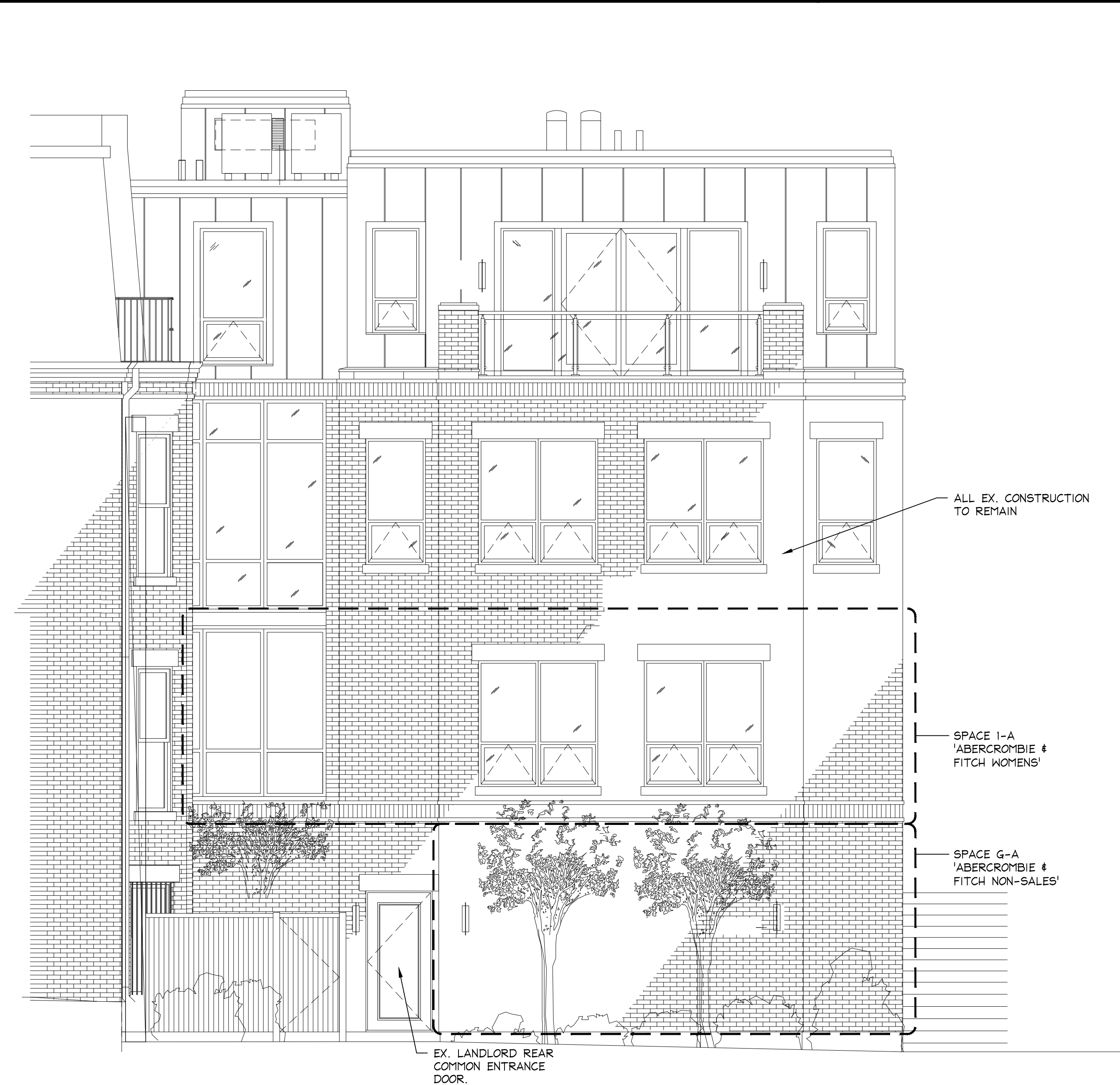
U EXTERIOR ELEVATION - PARTIAL 1-B ENTRANCE
A2.01 SCALE: 1/4" = 1'-0"



L EXTERIOR ELEVATION - PARTIAL 1-A ENTRANCE
A2.01 SCALE: 1/4" = 1'-0"



S EXTERIOR ELEVATION - PARTIAL SIDE G-A SERVICE EXIT ONLY
A2.01 SCALE: 1/4" = 1'-0"



J EXTERIOR ELEVATION - PARTIAL REAR (ALLEY VIEW)
A2.01 SCALE: 1/4" = 1'-0"

- GENERAL NOTES**
- THESE EXTERIOR ELEVATIONS ARE EXISTING AND NO MODIFICATIONS ARE TO BE MADE IN THIS PROJECT EXCEPT FOR THE ADDITION OF STORE SPECIFIC SIGNAGE AS SHOWN.
 - OWNER'S SIGN VENDOR IS RESPONSIBLE FOR ALL SIGNAGE SHOP-DRAWINGS INCLUDING ATTACHMENT DETAILS.
 - SEE ELECTRICAL PLANS FOR CIRCUITS PROVIDING POWER TO ILLUMINATED SIGNAGE.
 - SIGNAGE ATTACHED TO BRICK SHALL USE LEAD SLEEVE ANCHORS OR DRILLED EPOXY ANCHORS.
- CODED NOTES**
- INTERIOR SIDE OF WINDOW AND DOOR GLAZING SHOWN SHADED TO RECEIVE 3M ULTRA 8800 (8MIL 0.20MM THICK) TRANSPARENT SAFETY FILM.
 - EXTERIOR SIDE OF DOOR GLAZING SHOWN SHADED TO RECEIVE 3M FASARA GLASS FINISHES, NATURAL, SHIGURE SH2BKSG FILM (88 MICRONS THK., VISIBLE LIGHT TRANSMITTANCE 15%, UV TRANSMITTANCE 0%).
 - WHITE VINYL, INTERIOR APPLIED ABERCROMBIE & FITCH DECAL. SEE DETAIL C/A8.00. SILVER LEAF VINYL/MIRROR CHROME VINYL REVERSE MOUNTED TO EXISTING WINDOWS FACETED PRISMATIC SILVER LEAF.
 - WHITE VINYL, INTERIOR APPLIED YPB DECAL. SEE DETAIL B/A8.00. SILVER LEAF VINYL/MIRROR CHROME VINYL REVERSE MOUNTED TO EXISTING WINDOWS FACETED PRISMATIC SILVER LEAF.
 - YPB BOX SIGN WITH 10-1/2" x 2-1/2" TALL WHITE LETTERS. LETTERS TO BE RAISED 1/2". BLACK METAL BOX TO BE 5'-0" WIDE BY 1'-7" TALL AND 6" DEEP, APPROX. 7.9 SQUARE FEET. SEE DETAIL U/A8.00.

ABERCROMBIE & FITCH CO.
6301 FITCH PATH
NEW ALBANY, OHIO 43054
614-283-6500

CORTLAND MORGAN ARCHITECT, AIA
70 N. FIELDER RD.
ARLINGTON, TX 76012
PHONE: (817) 635-5696
PROJECT ARCHITECT: CORTLAND MORGAN
E-MAIL: TRICIA@CMIAA.NET

321 NEWBURY
51/53 HEREFORD ST.
BOSTON, MA 02115
STORE # A11336

Project No:	T&D.
Drawn By:	STAFF/CM
Date:	Issue
11-22-22	BBAC SUBMISSION



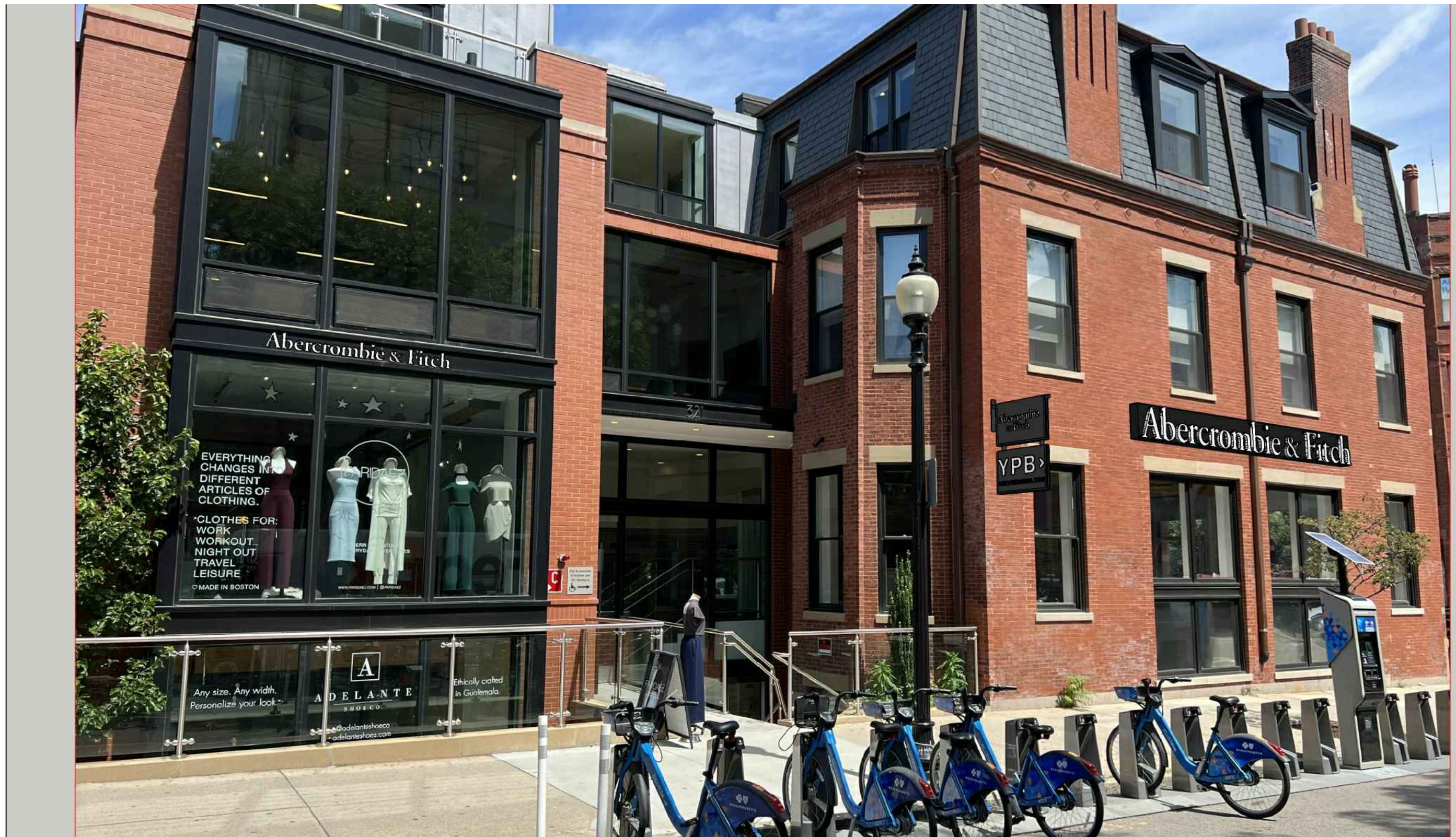
**Proposed signage rendering
West view**

Abercrombie & Fitch

51/53 HEREFORD & 321 NEWBURY ST.
BOSTON, MA 02115 USA

#10

DATE:
11/22/2022



Proposed signage rendering North view

Abercrombie & Fitch

51/53 HEREFORD & 321 NEWBURY ST.
BOSTON, MA 02115 USA

#11

DATE:
11/22/2022



**Proposed signage rendering
YPB Blade sign**

Abercrombie & Fitch

51/53 HEREFORD & 321 NEWBURY ST.
BOSTON, MA 02115 USA

#12

DATE:
11/22/2022



**Proposed signage rendering
YPB Box sign**

Abercrombie & Fitch

51/53 HEREFORD & 321 NEWBURY ST.
BOSTON, MA 02115 USA

#13

DATE:
11/22/2022



**Proposed signage rendering
A&F Box sign**

Abercrombie & Fitch

51/53 HEREFORD & 321 NEWBURY ST.
BOSTON, MA 02115 USA

#14

DATE:
11/22/2022



**Proposed signage rendering
A&F Pin-mounted sign**

Abercrombie & Fitch

51/53 HEREFORD & 321 NEWBURY ST.
BOSTON, MA 02115 USA

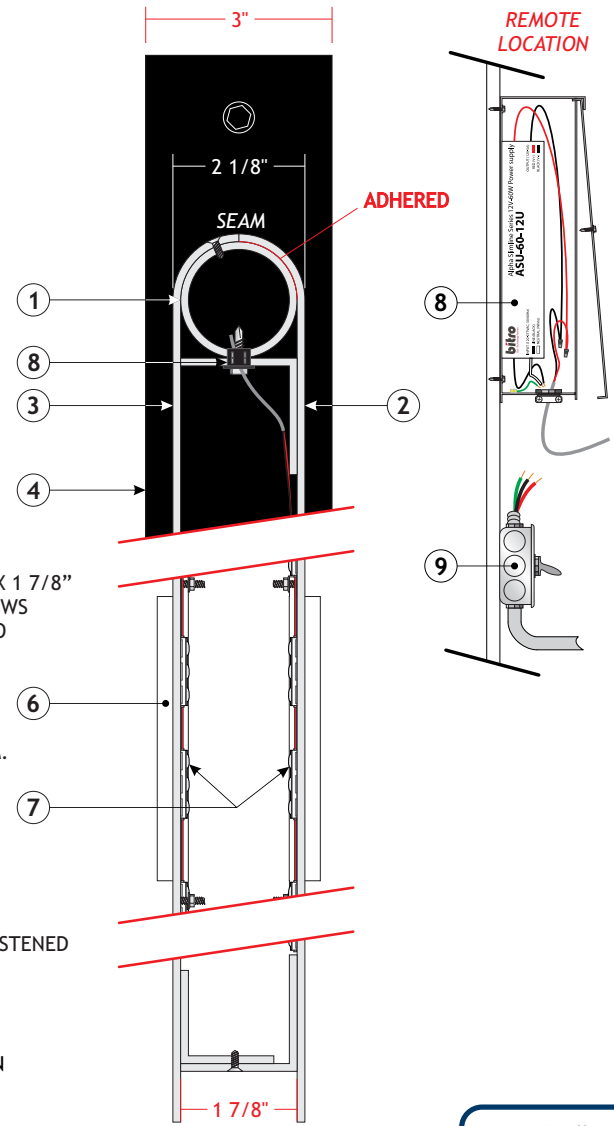
#15

DATE:
11/22/2022

D BLADE SIGN ILLUM. - ELEVATION
Scale: 1" = 0' - 8"



BLADE SIGN ILLUM. - SECTION
Scale: 1" = 0' - 2"



SIGN - DETAILS

- ① 1 7/8" DIAMETER ALUMINUM PIPE PAINTED TO MATCH RAL 9005 - SATIN BLACK. ALUMINUM PIPE IS WELDED TO ALUMINUM MOUNTING PLATE.
- ② 1/8" THICK ROUTED ALUMINUM PANEL ROLLED AT TOP TO MOUNT FLUSH TO 1 7/8" DIAMETER PIPE. 1 7/8" X 1 7/8" ANGLED ALUMINUM WELDED TO INTERIOR SIDE OF PANEL. ALUMINUM PANEL IS MOUNTED TO PIPE WITH SCREWS THROUGH ANGLED ALUMINUM AND PIPE AND ADHESIVE ALONG TOP OF PIPE. ALUMINUM PANEL IS PAINTED TO MATCH RAL 9005 - SATIN BLACK.
- ③ 1/8" THICK ROUTED ALUMINUM PANEL ROLLED AT TOP TO MOUNT FLUSH TO 1 7/8" DIAMETER PIPE. 1 1/2" X 1 1/2" ANGLES ALUMINUM WELDED TO INTERIOR SIDE OF PANEL. ALUMINUM PANEL IS MOUNTED TO PIPE WITH COUNTERSINK SCREWS ALONG TOP INTO PIPE AND ALONG BOTTOM THROUGH ANGLED ALUMINUM. ALUMINUM PANEL IS PAINTED TO MATCH RAL 9005 - SATIN BLACK. THIS PANEL IS REMOVABLE FOR SERVICING.
- ④ 3/8" ALUMINUM MOUNTING PLATE, PAINTED TO MATCH RAL 9005 - SATIN BLACK. MOUNTED TO WALL WITH APPROPRIATE FASTENERS FOR WALL CONDITIONS.
- ⑤ PVC PIPE CAP, PAINTED TO MATCH ALUMINUM TUBE.
- ⑥ 1/2" THICK WHITE 2447 ACRYLIC PUSH-THRU LETTERS MOUNTED TO ALUMINUM PANELS WITH STUDS AND FASTENED WITH NUTS ON THE INTERIOR SIDES.
- ⑦ BITRO BANTAMPLUS 4000K LED UNITS MOUNTED AROUND WORDS TO ILLUMINATE LETTERS.
- ⑧ HEYCO BUSHING FOR LOW VOLTAGE PASS-THRU TO BITRO ASU-60-12U LED DRIVER (120-277 VOLT) PLACED IN PAIGE 980054C SNAP 2 ENCLOSURE.
- ⑨ DEDICATED PRIMARY SIGN CIRCUIT AND DISCONNECT PROVIDED BY ELECTRICIAN.



93 Industry Drive
PO Box 349
Versailles, KY 40383
859.879.1199



Abercrombie & Fitch

6301 FITCH PATH
NEW ALBANY, OH 43054

This sign is intended to be installed in accordance with the requirements of Article 600 of the National Electrical Code and/or other applicable local codes. This includes proper grounding and bonding of the sign.

RUGGLES SIGN DOES NOT PROVIDE PRIMARY ELECTRICAL TO SIGN LOCATION!



Submital Date: 12/10/21
Acct Rep: John Burns
Designer: Fred Burch V

REVISIONS

r1: 12/17/21-JB	r7: _____
r2: 01/21/22	r8: _____
r3: 04/05/22-JB	r9: _____
r4: 04/19/22	r10: _____
r5: 04/27/22	r11: _____
r6: 05/13/22	r12: _____

AF BLD24 illum

PAGE: 5

TO BE REVISED TO INCLUDE PROJECT SPECIFIC YPB BLADE SIGN UNDERNEATH

A EDGE LIT ILLUM. LETTERS - ELEVATION
Scale: 1" = 1' - 4"

Abercrombie & Fitch 12" F

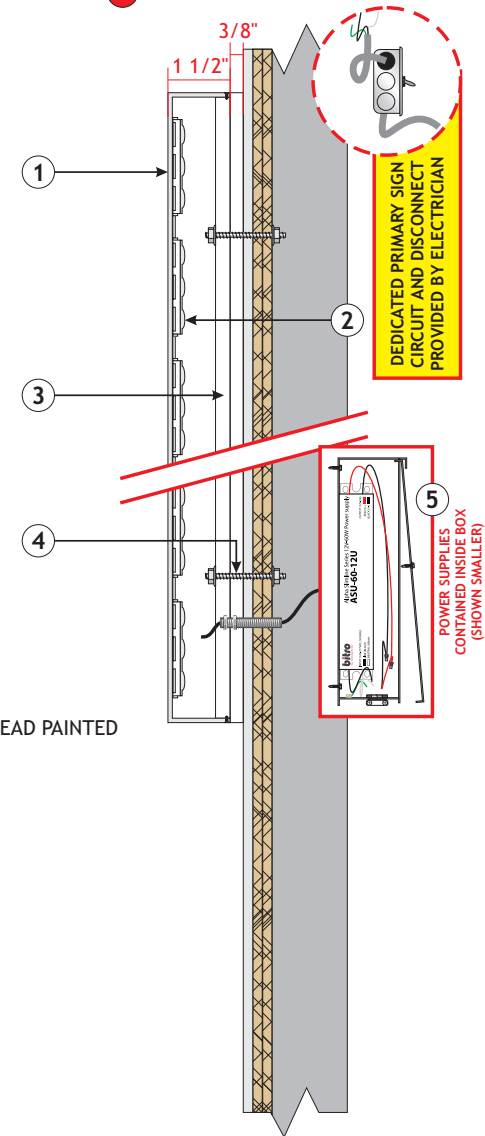
11'-6 1/4"

SIGN - DETAILS

- ① 1 1/2" DEEP ALUMINUM LETTERS, RETURNS AND FACES PAINTED TO MATCH RAL 9005-BLACK, INTERIOR SURFACES PAINTED HIGH GLOSS WHITE.
- ② BITRO BANTAM 4000K LED UNITS TO ILLUMINATE LETTERS.
- ③ 3/4" 7328 ACRYLIC BACK (3/8" EXPOSED) WITH FROSTED EDGES. SECURED TO RETURNS WITH COUNTERSINK SCREW WITH HEAD PAINTED TO MATCH RETURNS.
- ④ LETTERS MOUNT FLUSH TO SURFACE WITH ALL THREAD AND NUTS.
- ⑤ BITRO ASU-60-12U LED RIVER (120-277 VOLT) CONTAINED IN PAIGE 980054C SNAP 2 ENCLOSURE.

FOR REFERENCE ONLY - SIZES AS NOTED ON ELEVATION

EDGE LIT ILLUM. LETTERS - SECTION



93 Industry Drive
PO Box 349
Versailles, KY 40383
859.879.1199



Abercrombie & Fitch

6301 FITCH PATH
NEW ALBANY, OH 43054

This sign is intended to be installed in accordance with the requirements of Article 600 of the National Electrical Code and/or other applicable local codes. This includes proper grounding and bonding of the sign.

RUGGLES SIGN DOES NOT PROVIDE PRIMARY ELECTRICAL TO SIGN LOCATION!



Submittal Date: 12/10/21
Acct Rep: John Burns
Designer: Fred Burch V

REVISIONS

r1: 12/17/21-JB	r7: _____
r2: 01/21/22	r8: _____
r3: 04/05/22-JB	r9: _____
r4: 04/19/22	r10: _____
r5: 04/27/22	r11: _____
r6: 05/13/22	r12: _____