

# 1661 WASHINGTON

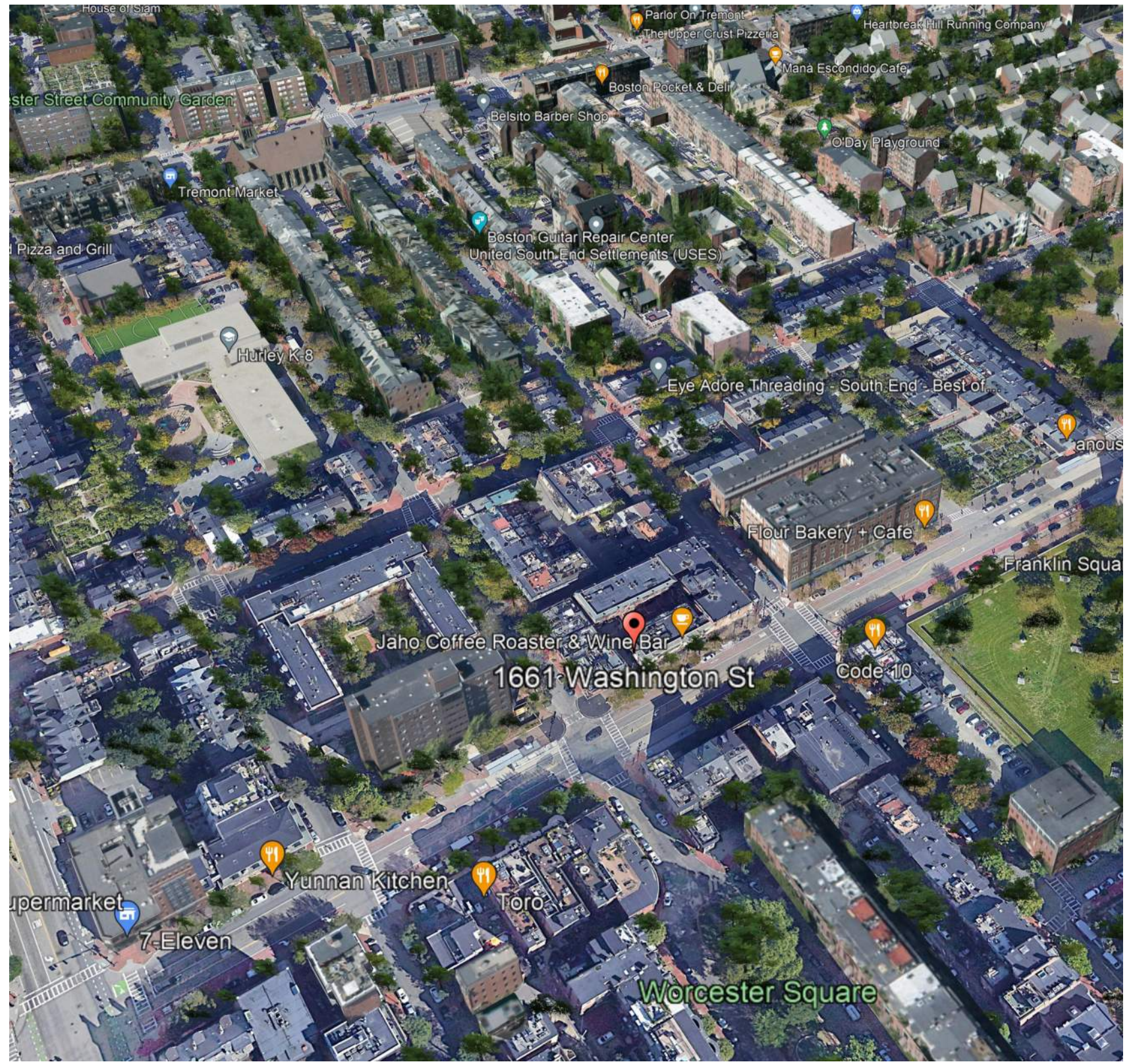
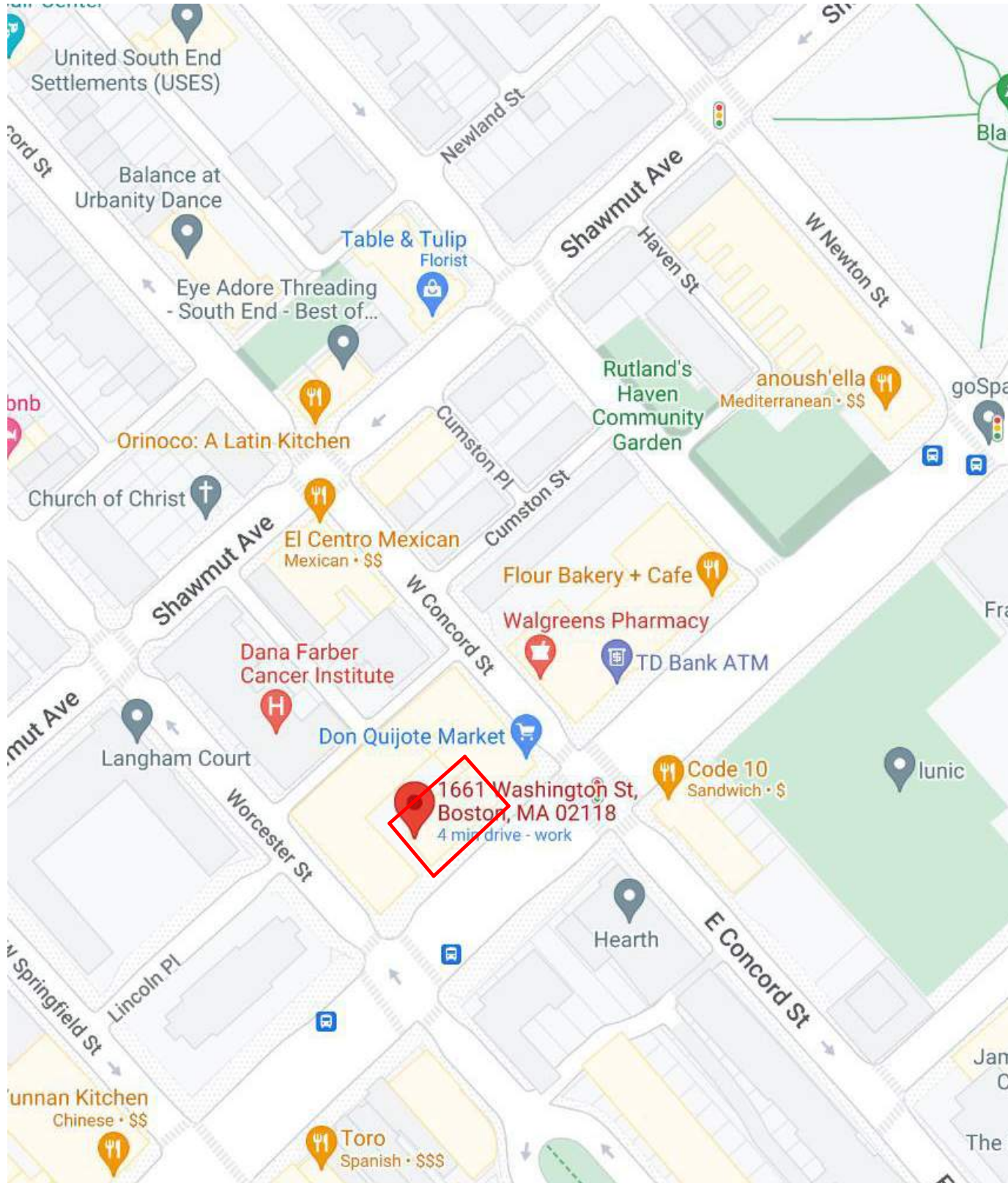
BOSTON, MA

**GTI Properties**

12/09/2022



EMBARC







1

EAST ELEVATION - EXISTING

1/8" = 1'-0"

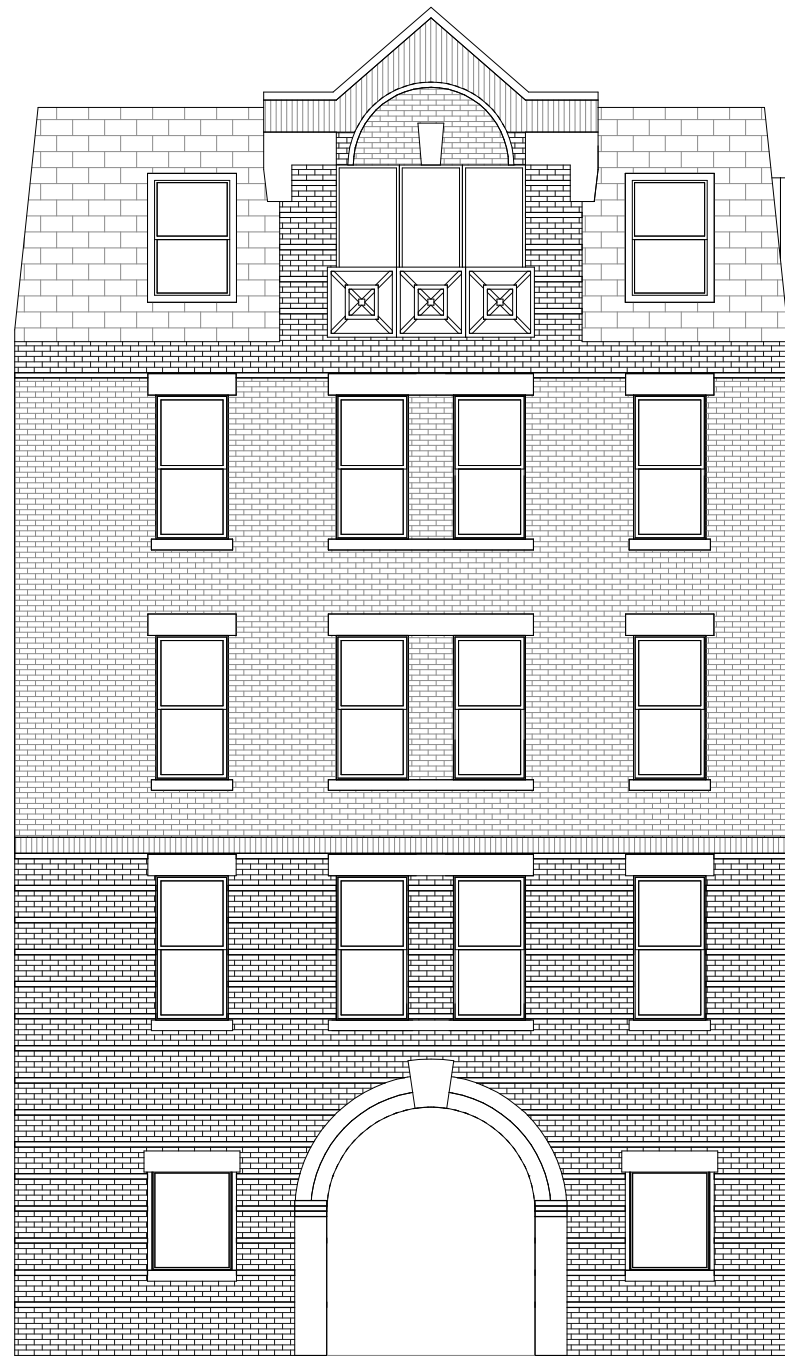


REMOVE SLIDING DOORS AND RAILINGS.  
 INSTALL NEW TRIPLE AWNING-OVER-FIXED  
 METAL WINDOWS, BLACK FINISH.  
 INSTALL NEW PRE-CAST SILL.  
 INSTALL NEW GALVANIZED LINTEL.

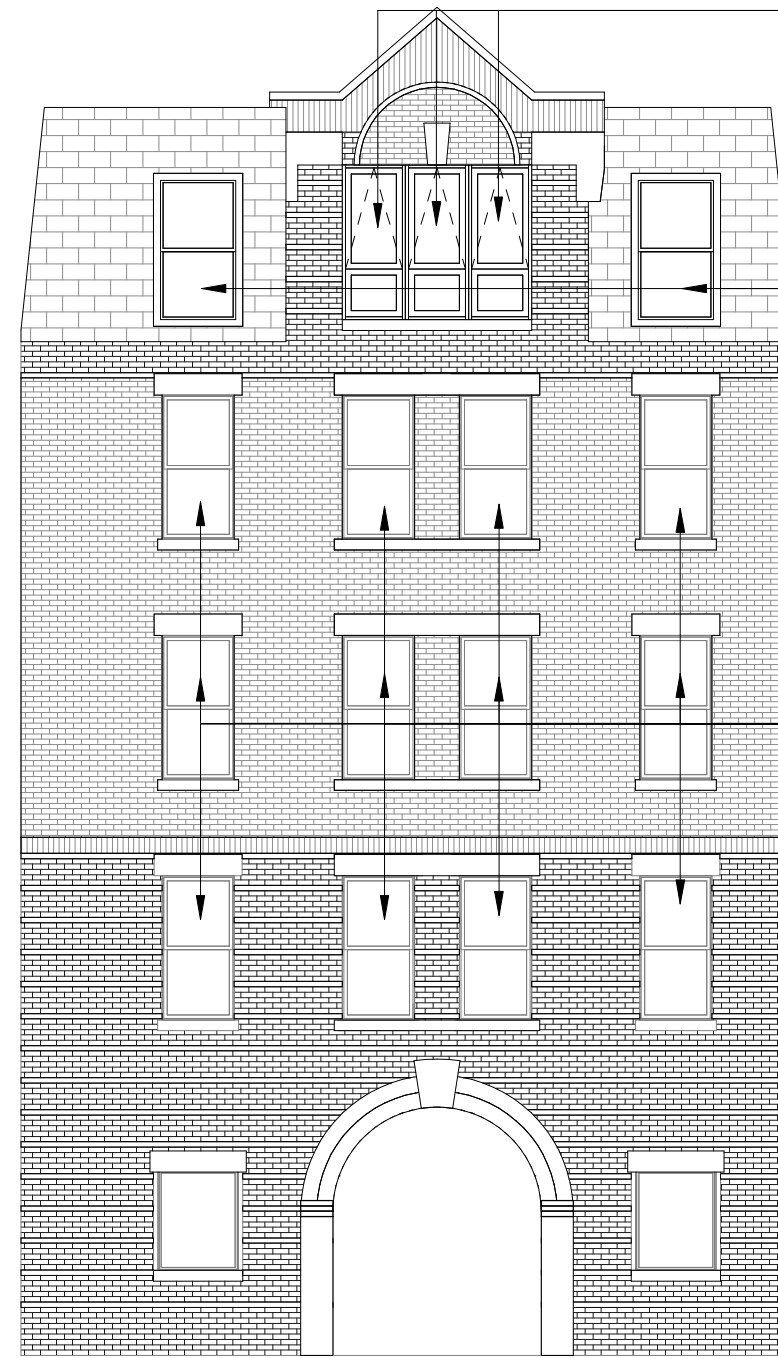
REPLACE EXISTING METAL 1-OVER-1  
 DOUBLE-HUNG WINDOWS WITH NEW 1-  
 OVER-1 METAL DOUBLE-HUNG WINDOWS,  
 BLACK FINISH. HEAD HEIGHT AND JAMB  
 WIDTH TO REMAIN, LOWER SILLS 12".

REPLACE EXISTING METAL 1-OVER-1 DOUBLE-  
 HUNG WINDOWS WITH NEW 1-OVER-1  
 METAL DOUBLE-HUNG WINDOWS, BLACK  
 FINISH.

1 EAST ELEVATION - PROPOSED  
 1/8" = 1'-0"



1 SOUTH ELEVATION - EXISTING  
1/8" = 1'-0"



REMOVE SLIDING DOORS AND RAILINGS.  
INSTALL NEW TRIPLE AWNING-OVER-FIXED  
METAL WINDOWS, BLACK FINISH.  
INSTALL NEW PRE-CAST SILL.  
INSTALL NEW GALVANIZED LINTEL.

REPLACE EXISTING METAL 1-OVER-1  
DOUBLE-HUNG WINDOWS WITH NEW 1-  
OVER-1 METAL DOUBLE-HUNG WINDOWS,  
BLACK FINISH. HEAD HEIGHT AND JAMB  
WIDTH TO REMAIN, LOWER SILLS 12".

REPLACE EXISTING METAL 1-OVER-1 DOUBLE-  
HUNG WINDOWS WITH NEW 1-OVER-1  
METAL DOUBLE-HUNG WINDOWS, BLACK  
FINISH.

2 SOUTH ELEVATION - PROPOSED  
1/8" = 1'-0"