

## WINDOW REPLACEMENT



PROPER  
BOSTONIAN

QUALITY THAT STANDS THE TEST OF TIME

Remove and replace twenty eight original wood windows with twenty eight single hung true divided lite wood windows

Windows in Kind

Exterior painted to match existing

- Windows are in poor condition and many cannot operate properly.
- Existing windows are single pane and do not offer adequate insulation. Proposed windows are double pane insulated glass which greatly increases energy efficiency. Proposed windows do not contain a Low E coating.
- Replacement of all twenty-eight windows keeps consistency for the entire building and preserves the integrity of the neighborhood.
- Proposed JB Sash & Door Proper Bostonian windows are historically accurate and used extensively throughout the city.

**JB SASH & DOOR PROPER BOSTONIAN  
RECENT BEACON HILL INSTALLATIONS**

**22 Irving Street – 2021 install**

**4 windows**

**140 Mount Vernon Street – 2021 install**

**9 windows**

**158 Mount Vernon Street – 2019 install**

**Entire residence**

**3 Myrtle Street – 2022 install**

**3 windows**

**81 Phillips Street – 2022 install**

**3 windows**

**55 West Cedar Street -2022 install**

**18 windows**

**Entire street facing side of residence**

**37 Revere Street – 2022 install**

**10 windows**

## **WINDOW REPLACEMENT**

### **FRONT ELEVATION**

#### **Floor one:**

Replace two 6/6 layout windows with 6/6 layout windows

#### **Floor two:**

Replace three 6/6 layout window with 6/6 layout windows

#### **Floor three:**

Replace three 6/6 layout windows with 6/6 layout windows

## **WINDOW REPLACEMENT**

### **REAR ELEVATION**

#### **Floor one:**

Replace three 6/6 layout windows with 6/6 layout windows

#### **Floor two:**

Replace two 4/4 layout windows with 4/4 windows

Replace one 6/6 layout window with 6/6 layout window

#### **Floor three:**

Replace two 6/6 layout windows with 6/6 layout windows

Replace one 8/8 layout window with 8/8 window

#### **Garden level:**

Replace two 6/6 layout windows with 6/6 windows

Replace one 2/2 layout window with 2/2 window

## **WINDOW REPLACEMENT**

### **SIDE REAR ELEVATION**

#### **Floor one:**

Replace two 6/6 layout windows with 6/6 layout windows

#### **Floor two:**

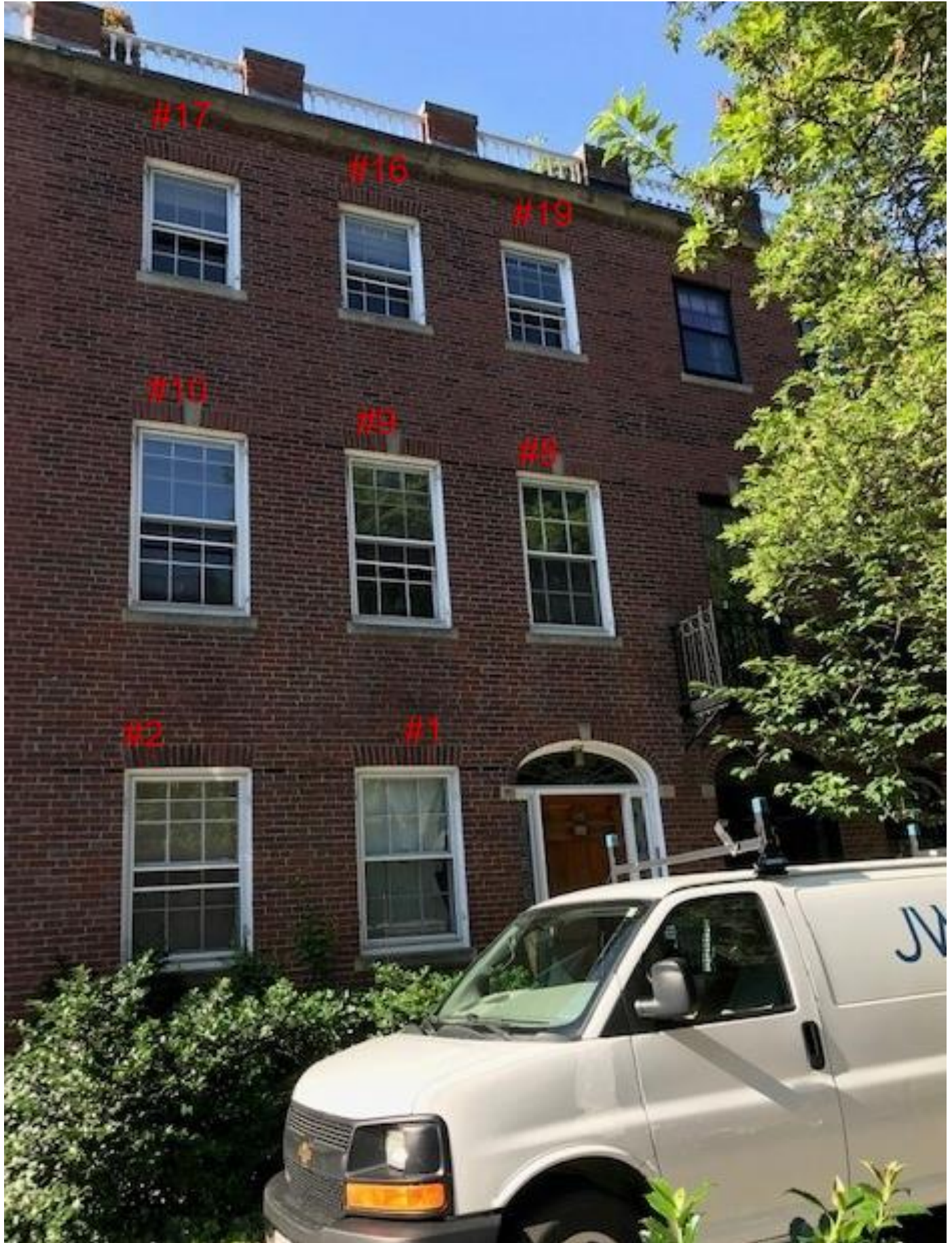
Replace two 6/6 layout windows with 6/6 windows

#### **Floor three:**

Replace two 6/6 layout windows with 6/6 layout windows

#### **Garden level:**

Replace two 6/6 layout windows with 6/6 windows























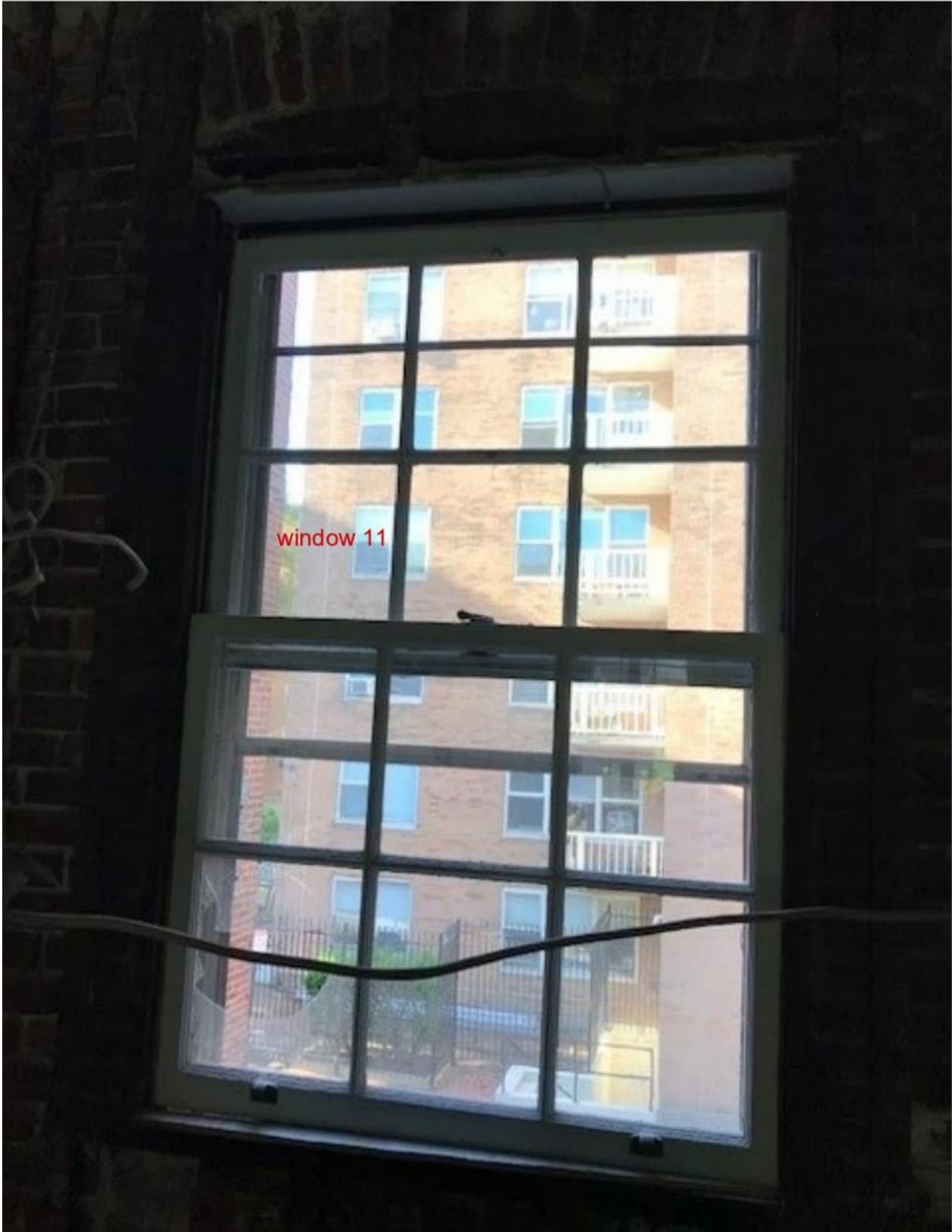






















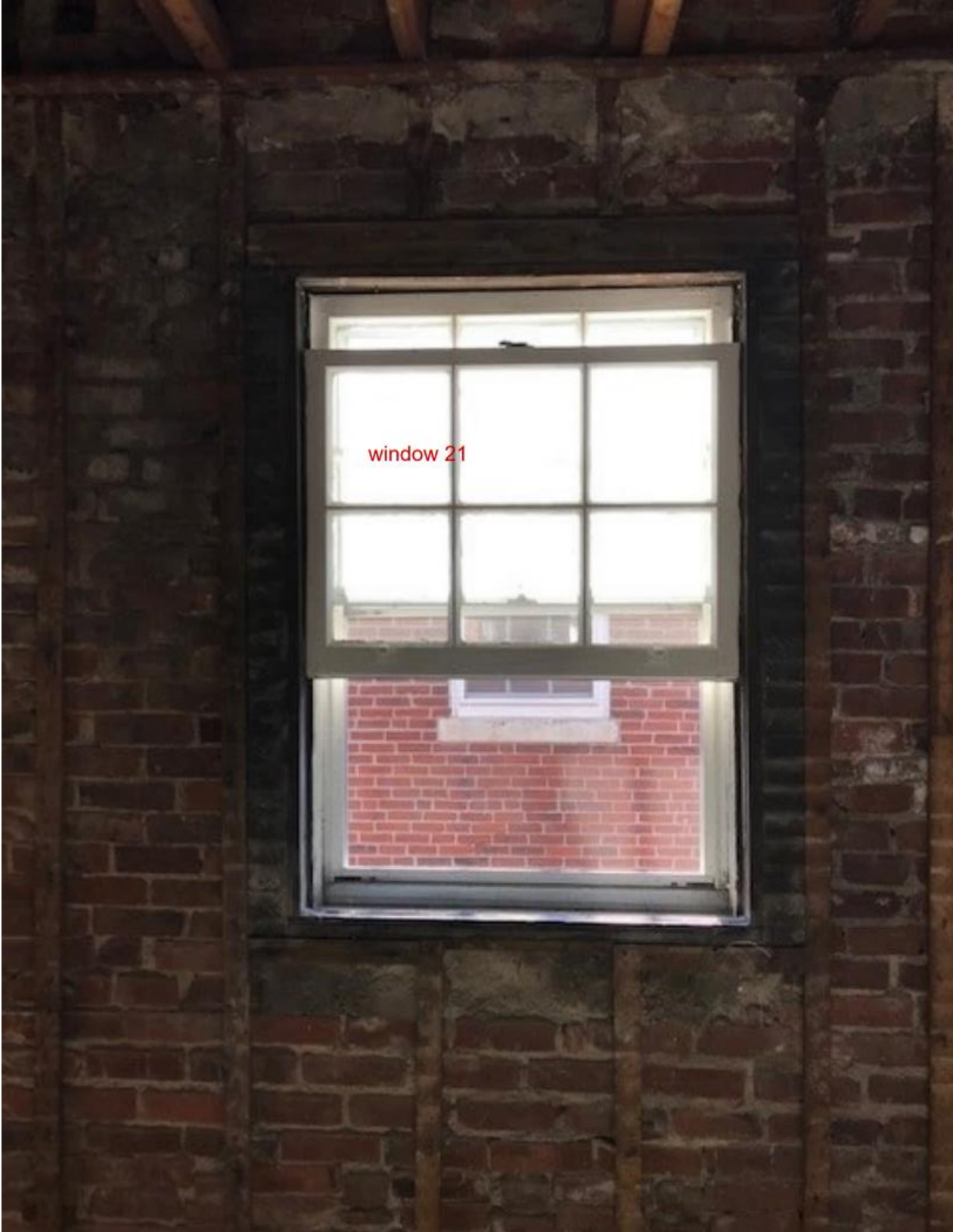






window 19







window 22





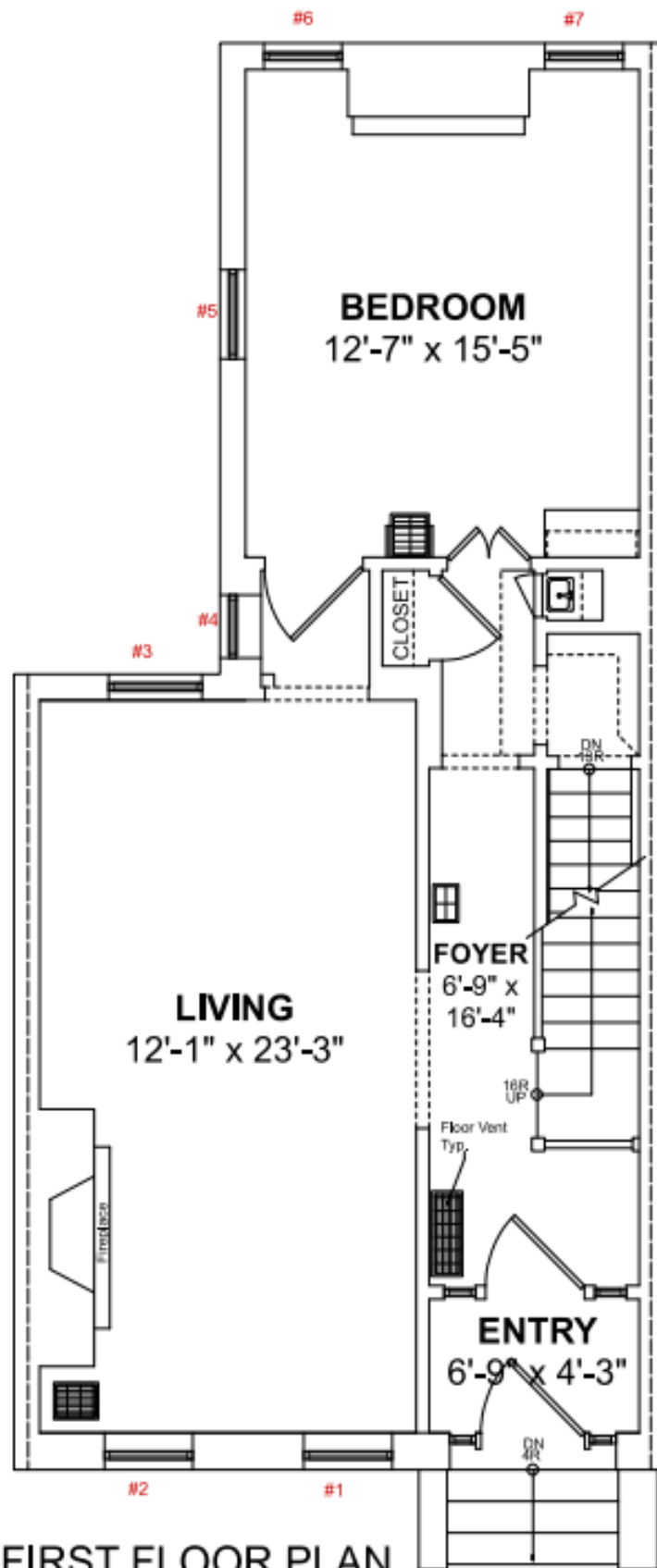










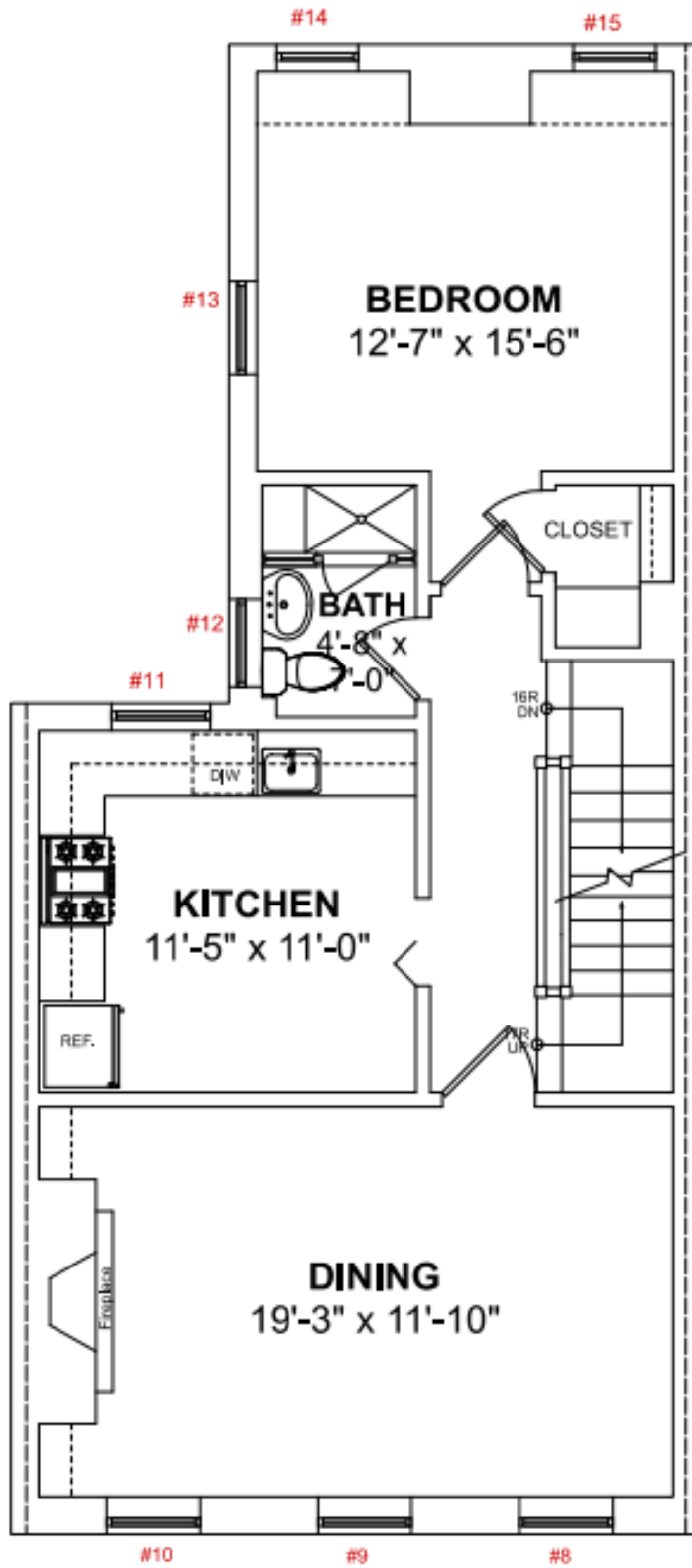


**FIRST FLOOR PLAN**

Ceiling Height = 8'-6"



Scale 1/4" = 1'-0"

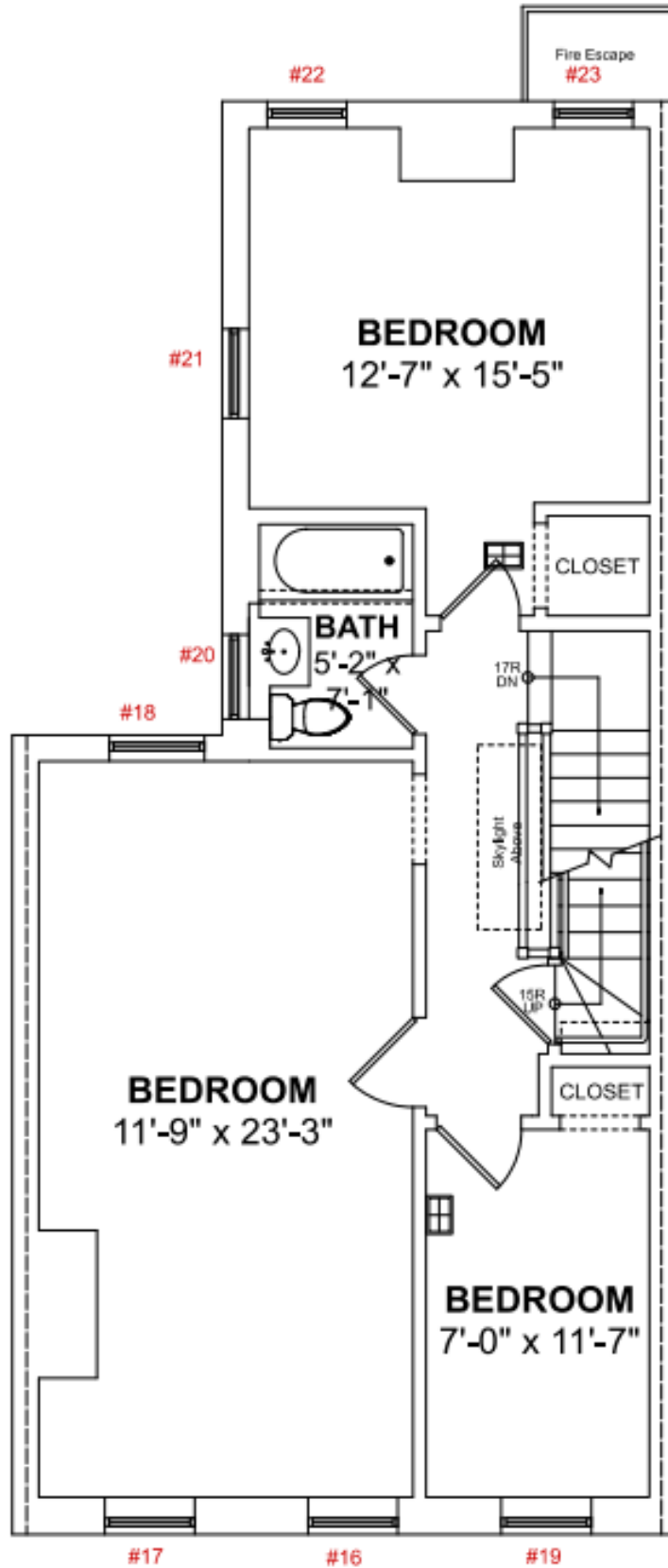


**SECOND FLOOR PLAN**

Ceiling Height = 9'-5"



Scale 1/4" = 1'-0"



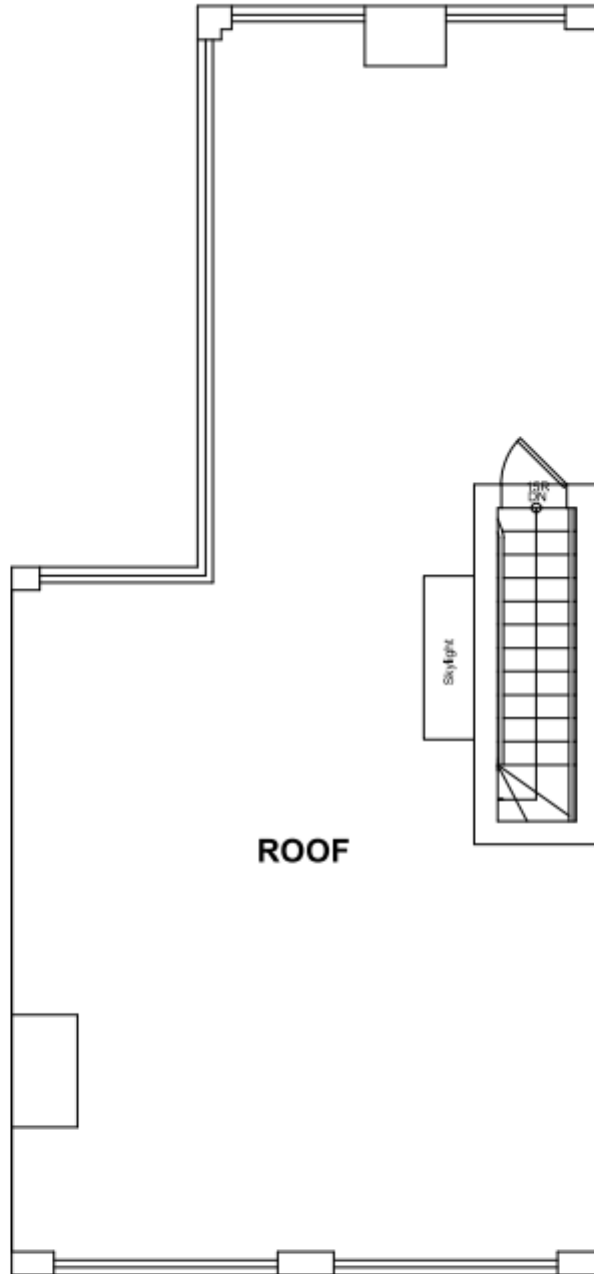
**THIRD FLOOR PLAN**

Ceiling Height = 8'-2"



Scale 1/4" = 1'-0"



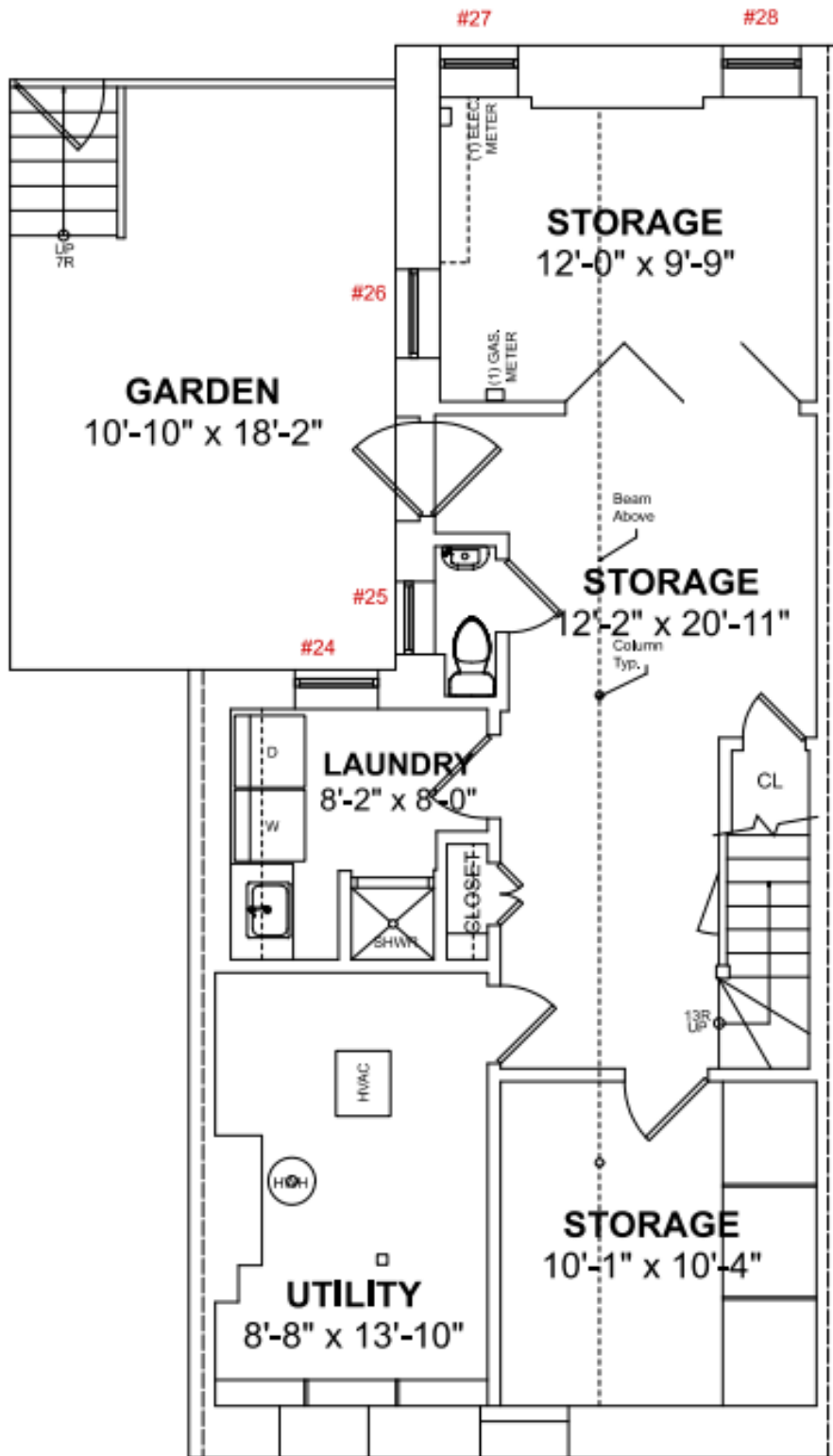


**ROOF PLAN**

Headhouse Ceiling Height = 6'-10"



Scale 1/4" = 1'-0"

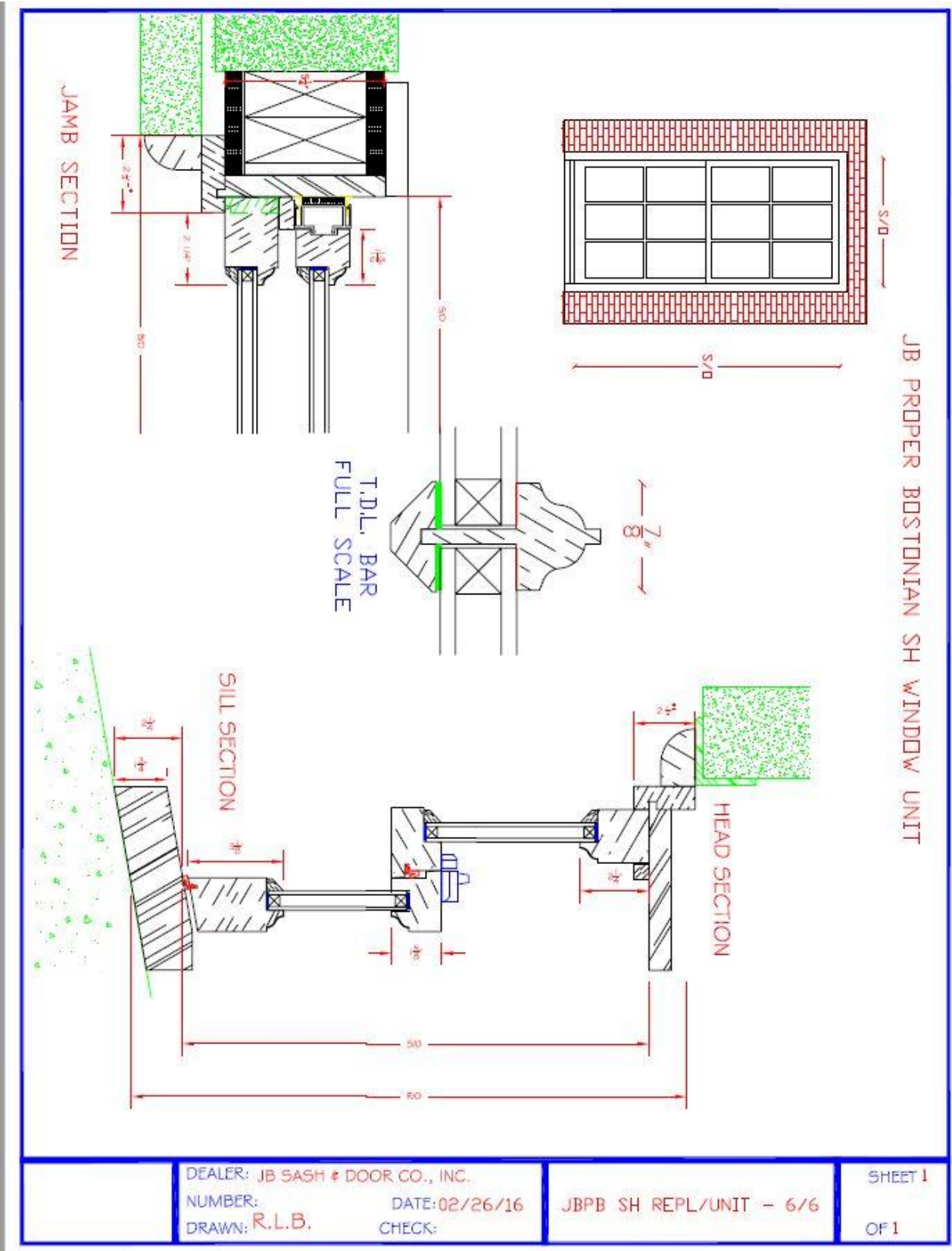


**GARDEN LEVEL PLAN**

Ceiling Height = 7'-10"



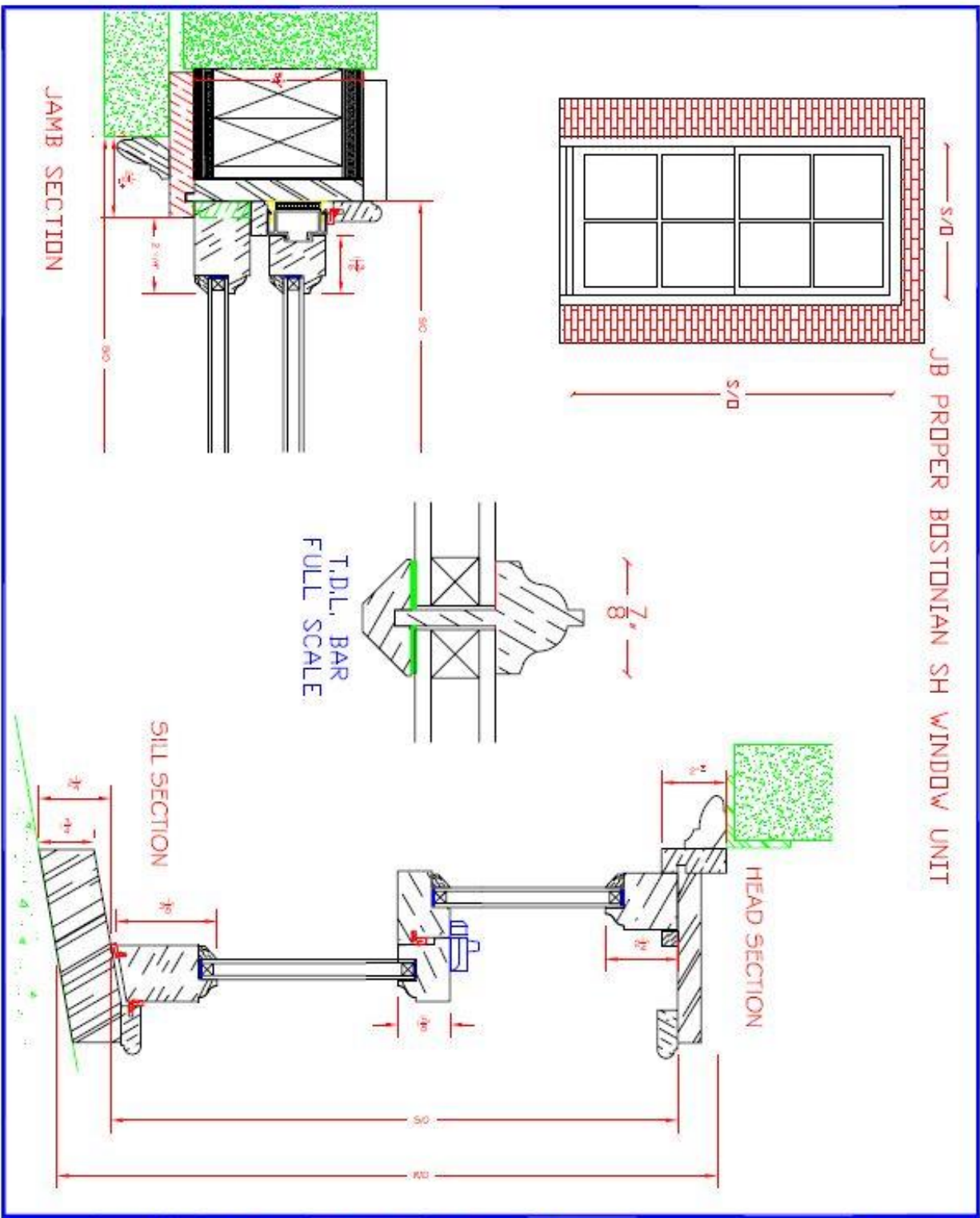
Scale 1/4" = 1'-0"



DEALER: JB SASH & DOOR CO., INC.  
 NUMBER: DATE: 02/26/16  
 DRAWN: R.L.B. CHECK:

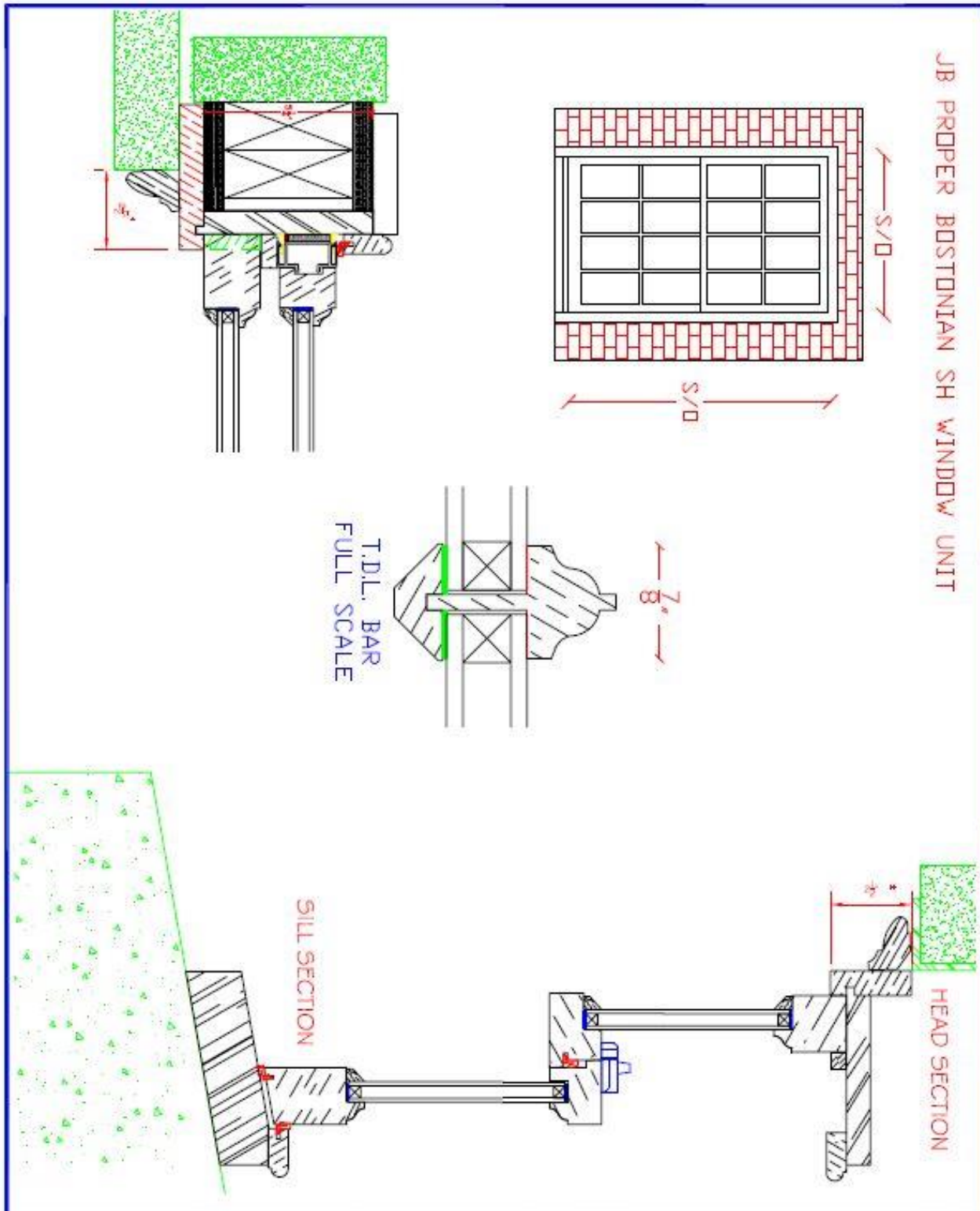
JBPB SH REPL/UNIT - 6/6

SHEET 1  
 OF 1



DEALER: JB SASH & DOOR CO., INC. NUMBER: _____ DATE: 06/14/16 DRAWN: R.L.B. CHECK: _____	JBPB SH - 4/4	SHEET 1 OF 1
--	---------------	-----------------

JB PROPER BOSTONIAN SH WINDOW UNIT

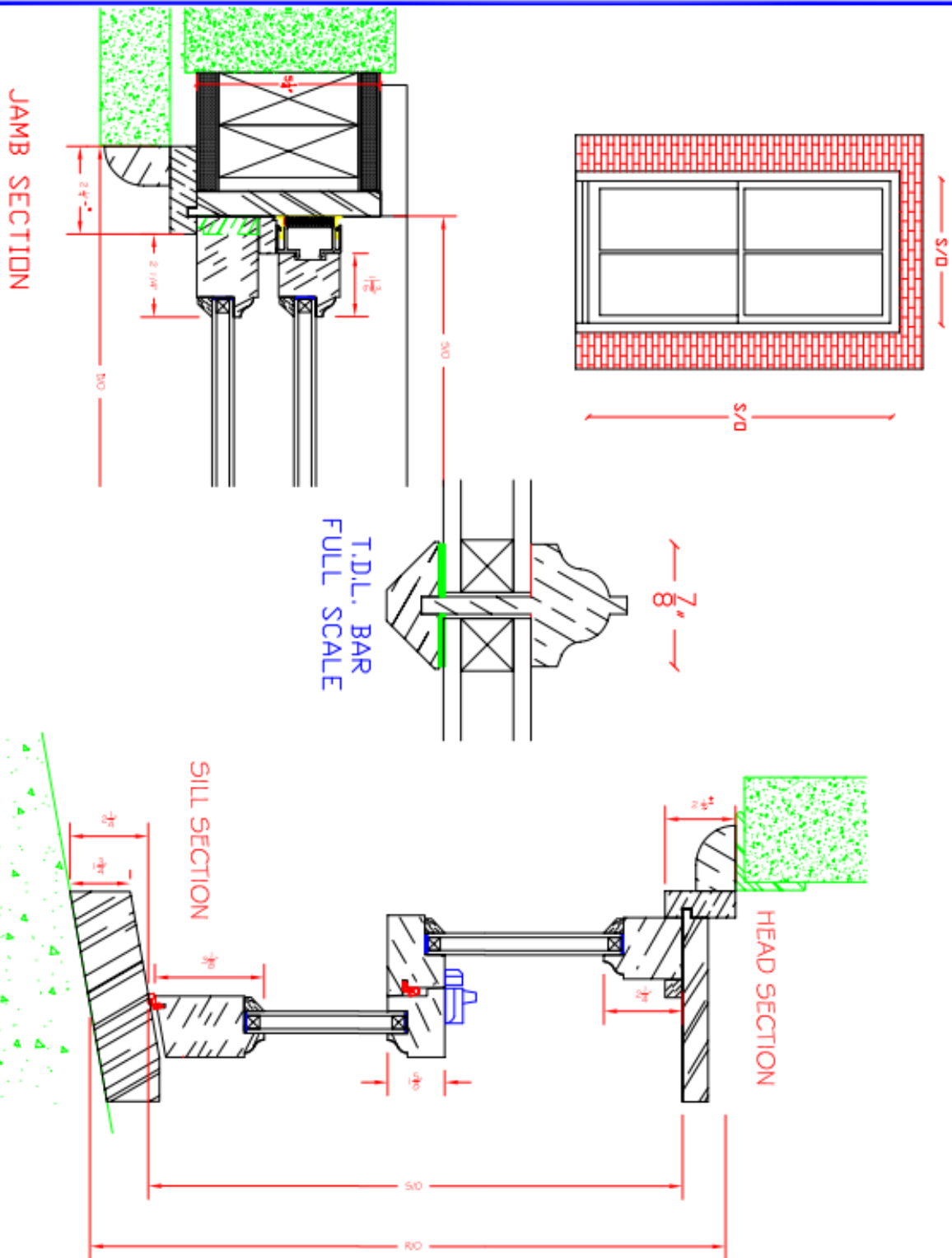


DEALER: JB SASH & DOOR CO., INC.  
 NUMBER: DATE: 03/19/15  
 DRAWN: R.L.B. CHECK:

JBPB SH - 8/8

SHEET 1  
 OF 1

JB PROPER BOSTONIAN SH WINDOW UNIT



DEALER: JB SASH & DOOR CO., INC.

NUMBER:

DATE: 02/26/16

DRAWN: R.L.B.

CHECK:

JBPB SH REPL/UNIT - 2/2

SHEET 1

OF 1