

86 Chestnut Street

Design Review

Evolve Residential

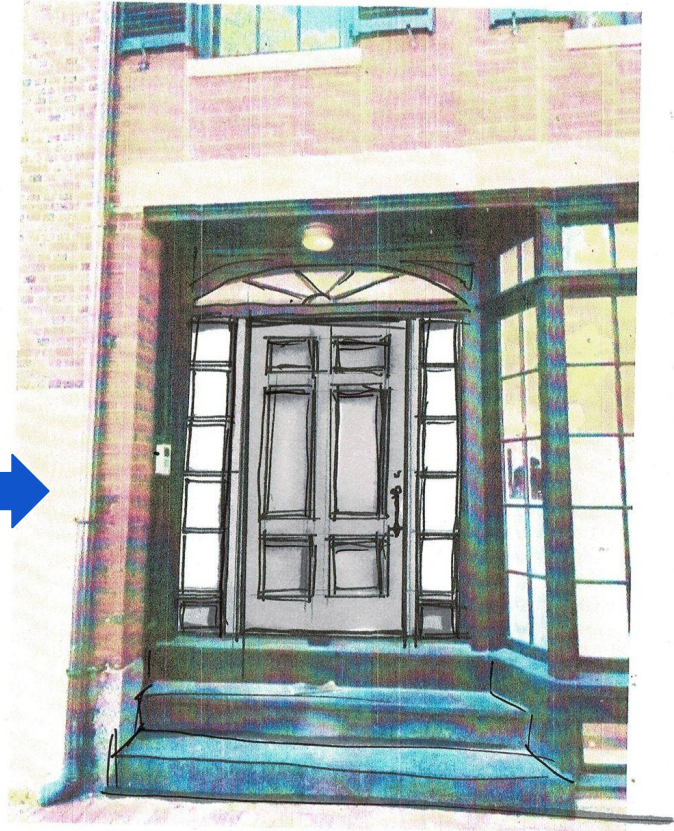


CURRENT DOOR

86 Chestnut Street



CURRENT DOOR



PROPOSED DOOR



FOURTEENTH COLONY LIGHTING

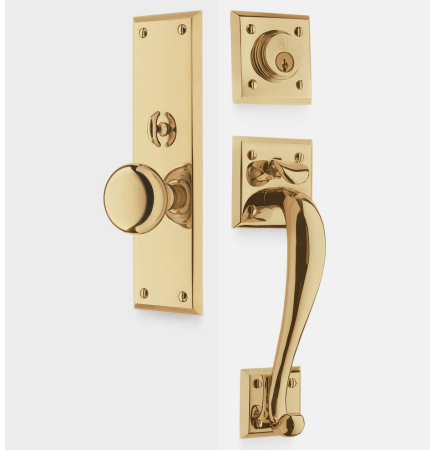
HANDCRAFTED LIGHT FIXTURES MADE IN MEMPHIS, TENNESSEE



LIGHT FIXTURE

PROPOSED DOOR





Option 1



Option 2



Buzzer

HARDWARE

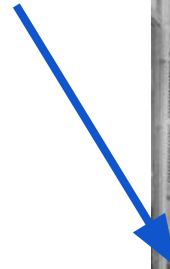
PROPOSED DOOR



1912 - Archive specialist Donna E. Russo informed us there are no direct photos of 86, just the surrounding homes. The image below is the closest glimpse to the front of 86 Chestnut Street.



86 Chestnut
Street



86 Chestnut Street

1912 - Commissioner Diana Coldren directed us to the knowledge that 86 and 88 Chestnut are identical properties.



Surrounding Properties

on Beacon Hill via Album Number 174
(photographs date from 1920-1930)

85 Chestnut Street



20 Chestnut Street





10 W. Cedar
10 W. Cedar



2 W Cedar



30 W. Cedar



35 W. Cedar
35 W. Cedar



4 W Cedar



36 W Cedar



37 1/2 Beacon



50 Beacon



52 Beacon

started Spring 1929



70 Beacon



87 Beacon



128 Beacon

88 Chestnut Street. - Current Door





Storefront on Chester Street



Previous Owner

Previous Owner



86 Chestnut Street

Info on Design Review

- <https://www.boston.gov/departments/landmarks-commission/individual-landmarks> - location to fill out form
- <https://www.boston.gov/departments/landmarks-commission/how-apply-landmarks-design-review> - info on what to submit

- Design Review 9/15