

1 ELEVATION - HEREFORD STREET EXTERIOR @ PICK-UP WINDOW
 SCALE: 1/4" = 1'-0"



EXISTING CONDITIONS IMAGE

SERIES 800 Single Hung

Thermally Improved Prime Replacement Windows

DETAILS

- Utilizes complete Thermal Break Sash and Master Frame for optimal insulating value.
- Features 7/8" clear insulating glass made with Super Spacer™, the world's only TrueWB™ edge technology.
- Top lite glazed to master frame for reduced air infiltration.
- Dual assembly screws at sash corners for added strength.
- Bottom sash lock for easy access.
- Block and Tackle balances.

Single Hung Rated Commercial Thermally Improved

Performance

- HC-35 @ 59°x 90°
- Uniform Structural Load: 52.5 psf
- Water Resistance: @ 5.25 psf, No Entry
- Air Infiltration: @ 1.57 psf, .18 cfm
- U-value/conduction @ 0mph: .49
- Condensation Resistance Factor: 50

Options

- Glass: Low E, Soft Coat, Solar Control, Argon, Tempered, Obscure, Wire or Spandrel
- Wiring Systems
- Exterior Finishing Systems
- Interior Trim Systems
- Receptor Systems
- Flange Frame
- Head Expander and Sill Angle
- Nailing Fin
- Finishes: Special finishes and custom architectural finishes are available
- Screens: Child Guard Screen
- Vandal Screen
- Standard Screen (Fiberglass)
- Internal, External and Interior Grids

Specifications

General: Universal's Series 800 thermal barrier single hung windows are designed to meet or exceed AIAA performance requirements, both functionally and structurally, with an AIAA rating of HC-35.

Finish: The standard finish on the Series 800 is an electrocoat applied baked-on acrylic color finish, with a 5-stage chromate undercoating conforming to AIAA 6013 standards. White, black, bronze, green and beige are standard (see color chart). Other Architect specified finishes are available upon request at additional cost.

Material: Aluminum used is commercial quality 6061-T5 alloy with a minimum ultimate tensile strength of 22,000 psi, free from defects, exceeding strength and durability with top rated dual-pane windows as defined in the Architectural Aluminum Manufacturer's Association Master Specifications for Aluminum Windows C-15. The combination of a urethane Thermal Barrier material as a separator and rigid vinyl gaskets completes the thermal barrier separation.

Frame/Sash: Master frame and sash have dual seal overlap joints. Head, sill and parts of the master frame are designed to receive locking conditionings of thermal break mullions. These are needed to meet joints (NOT factory-installed in the field) (mullion on sash).

Glazing: Operable sash glazing is a heavy vinyl, urethane "Mullion" type, and the fixed panel is spaced glazed to satisfy a good glazing condition between metal and glass. The primary glazing is the 7/8" double glass for maximum thermal performance.

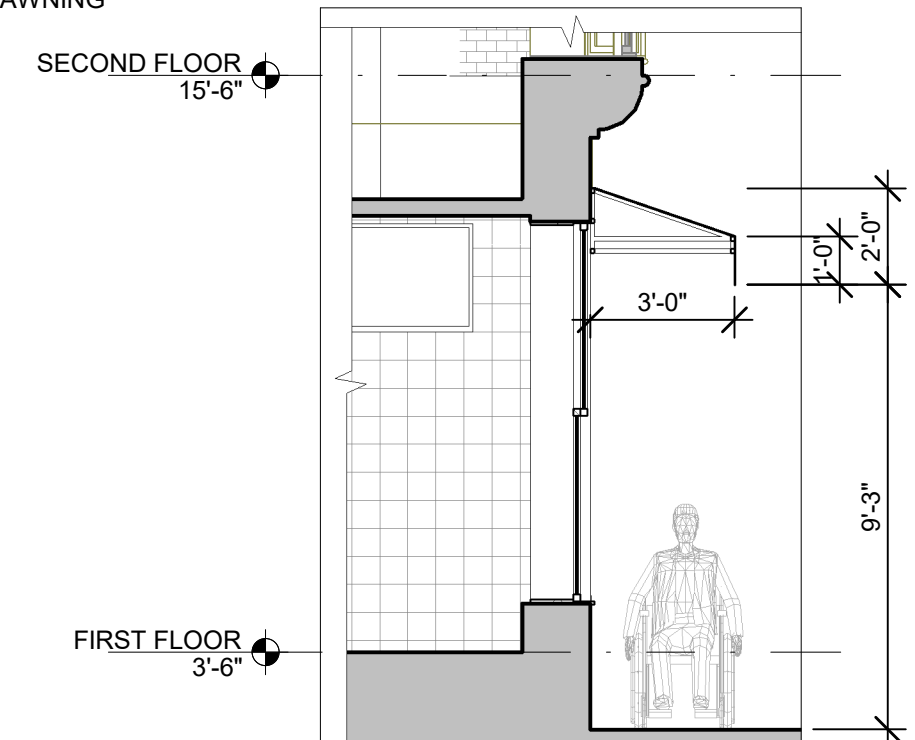
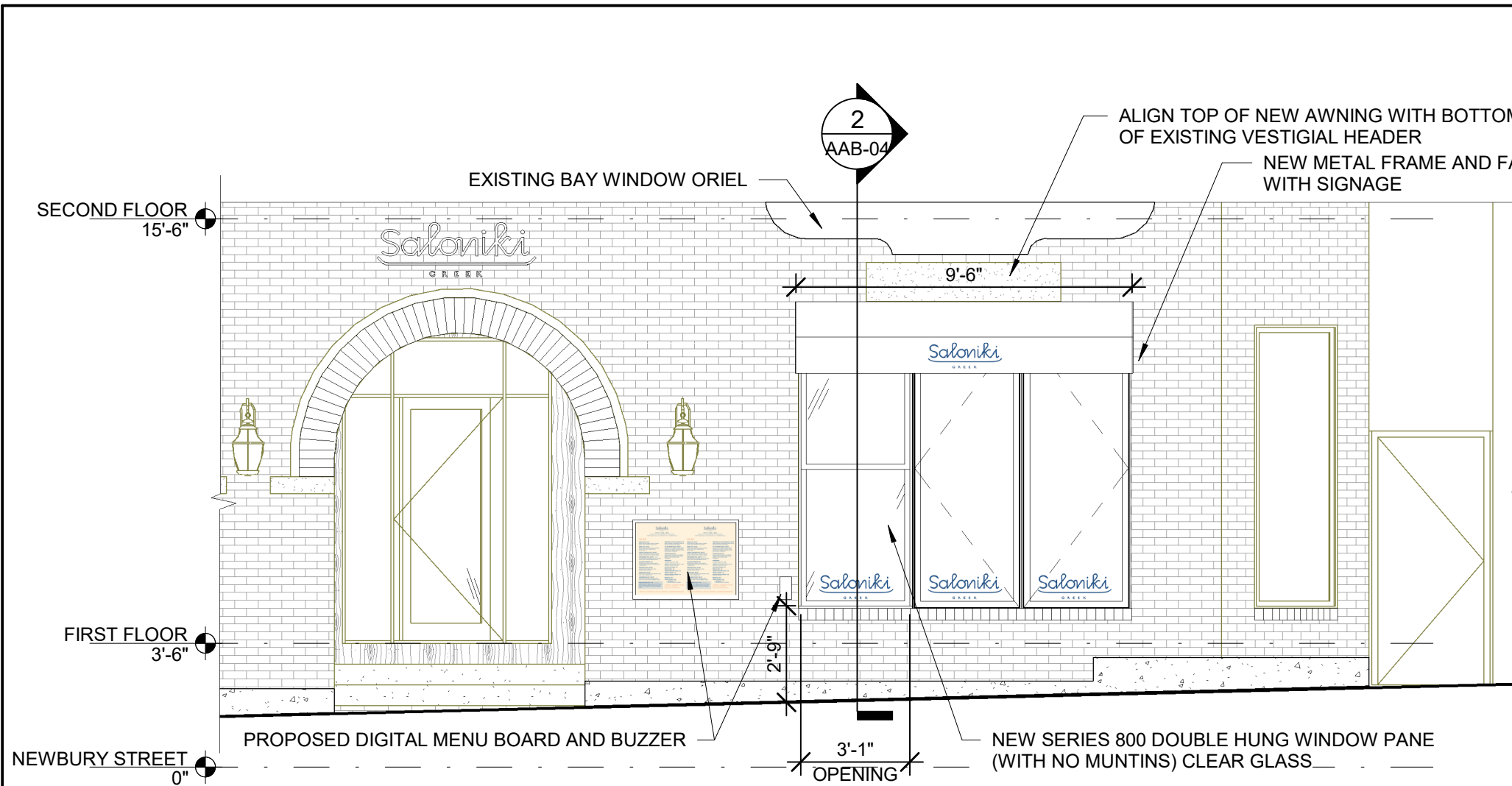
Spacer: Universal's Super Spacer™ contains NO metal and is one of the most thermally efficient spacers available today. Super Spacer™ contains no metal and is one of the most thermally efficient spacers available today. Super Spacer™ is the only polymer from NO metal seal edge spacer.

Hardware: The sash and sash are balanced with a block and tackle balance installed in the frame joints. Balances are readily accessible for replacement and are pre-adjusted at the factory to provide full operation, and hold sash in any open position based on the weight of glass to be used. Full travel lock the sash in fully closed position on the end of bottom sash. All sash hardware is of high quality weather-resistant material. Heavy duty metal locks are installed at the center of L/R Rail. Optional gonal balances are available at no additional cost. When windows are not being used, especially for ventilation, they must be fully closed and locked. Failure to do so may result in personal injury or damage to property.

Screen: The screen channel design of the master frame permits for a half screen, 18 x 16. Ringless mesh is attached to the screen box frame by a spline lock in the screen channel. Optional "Child Guard" and "Vandal" screening is available. WARNING: Impact screens are intended to provide reasonable insect control, and are not intended to provide for the retention of objects or persons from the interior.

NEW DOUBLE HUNG WINDOW SPECIFICATION/ FINISH TO MATCH EXISTING

<p>McMahon architects</p> <p>535 ALBANY STREET BOSTON, MA 02118 T. 617.482.5353 www.mcmahonarchitects.com</p>	<p>JOB TITLE: SALONIKI NEWBURY STREET</p>	<p>DRAWING NUMBER: LM-01</p>		
	<p>LOCATION: 316 Newbury Street, Boston, MA 02115</p>	<p>DATE: 06/15/2022</p>	<p>SCALE: 1/4" = 1'-0"</p>	
	<p>DRAWING TITLE: EXTERIOR ELEVATION @ PICK-UP WINDOW & SPECS</p>	<p>JOB NUMBER: 2021-3048</p>	<p>DRAWN: LA</p>	<p>CHECK: LC</p>
	<p>REVISION:</p>			



1 ELEVATION - HEREFORD STREET EXTERIOR @ PICK-UP WINDOW - OPTION 1
1/4" = 1'-0"

2 SECTION @ AWNING
1/4" = 1'-0"



AWNING CANVAS FABRIC COLOR

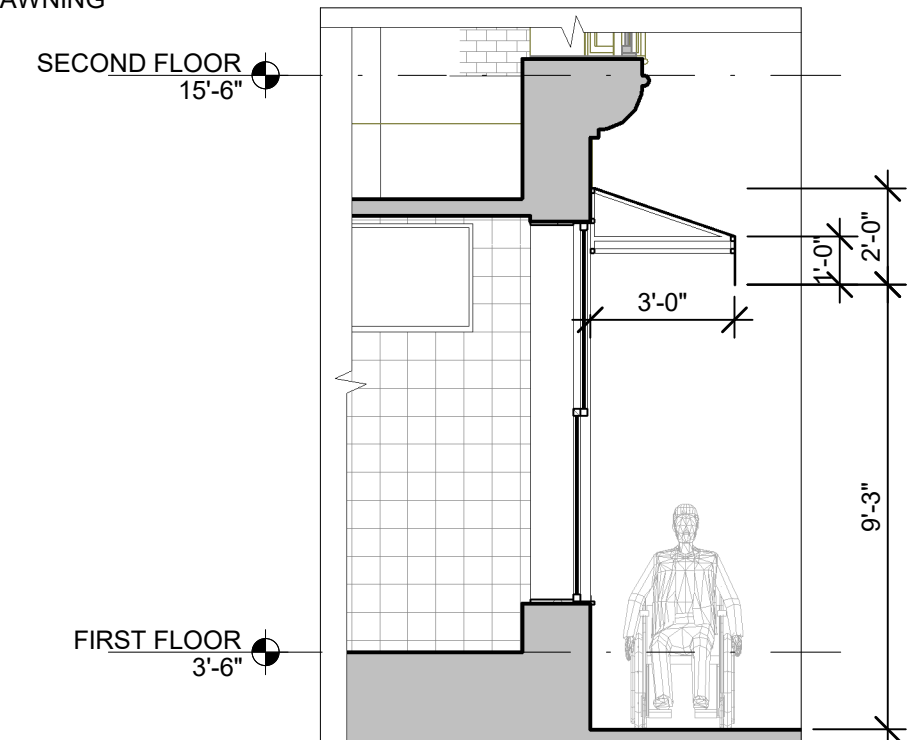
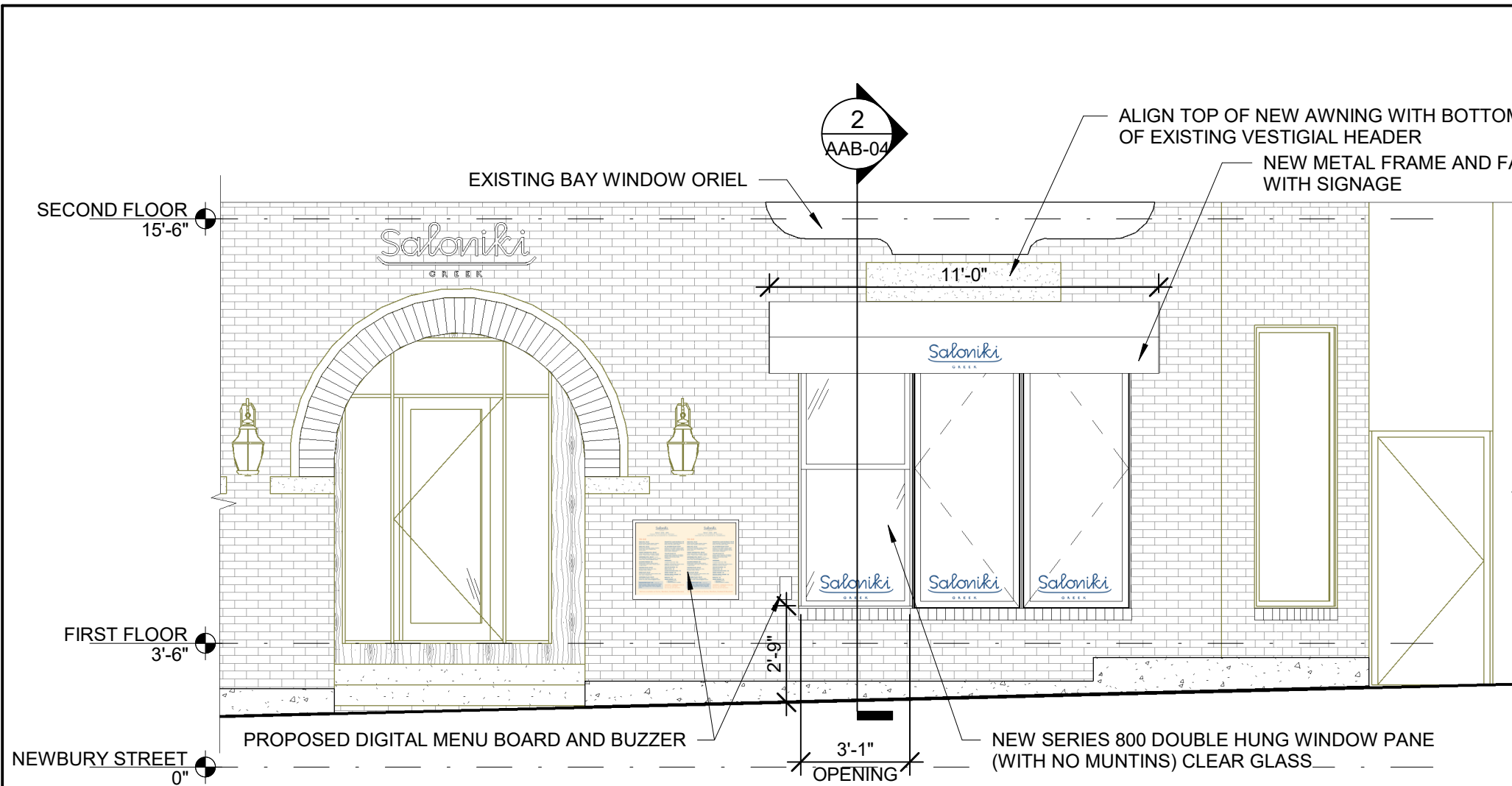
AWNING
FABRICATED 1"X1" STEEL FRAME, OPEN ENDED WITH VALANCE, SUNBRELLA 54" VIVITEX INKJET PRINTABLE FABRIC

GRAPHICS
DIGITALLY PRINTED DIRECT TO FABRIC

INSTALL
(1) AWNING TO BE INSTALLED OVER HEREFORD STREET PICK-UP WINDOW WITH MOUNTING CLIPS AND SCREWS.

AWNING SIGNAGE SIZE, DIGITALLY PRINTED IN WHITE LETTERING ON CANVAS

M McMahon architects 535 ALBANY STREET BOSTON, MA 02118 T. 617.482.5353 www.mcmahonarchitects.com	JOB TITLE: SALONIKI NEWBURY STREET	DRAWING NUMBER: LM-02		
	LOCATION: 316 Newbury Street, Boston, MA 02115	DATE: 06/15/22	SCALE: 1/4" = 1'-0"	
	DRAWING TITLE: HEREFORD STREET PICK-UP WINDOW AWNING - OPTION 1	JOB NUMBER: 2021-3048	DRAWN: Author	CHECK: Checker
	REVISION:			



1 ELEVATION - HEREFORD STREET EXTERIOR @ PICK-UP WINDOW - OPTION 2 (11 FEET)
1/4" = 1'-0"

2 SECTION @ AWNING
1/4" = 1'-0"



AWNING SIGNAGE SIZE, DIGITALLY PRINTED IN WHITE LETTERING ON CANVAS



PANTONE®
Dark Blue C

AWNING CANVAS FABRIC COLOR

AWNING
FABRICATED 1"X1" STEEL FRAME, OPEN ENDED WITH VALANCE, SUNBRELLA 54" VIVITEX INKJET PRINTABLE FABRIC

GRAPHICS
DIGITALLY PRINTED DIRECT TO FABRIC

INSTALL
(1) AWNING TO BE INSTALLED OVER HEREFORD STREET PICK-UP WINDOW WITH MOUNTING CLIPS AND SCREWS.

M McMahon architects <small>535 ALBANY STREET BOSTON, MA 02118 T. 617.482.5353 www.mcmahonarchitects.com</small>	JOB TITLE: SALONIKI NEWBURY STREET		DRAWING NUMBER: LM-03		
	LOCATION: 316 Newbury Street, Boston, MA 02115		DATE: 06/15/22	SCALE: 1/4" = 1'-0"	
	DRAWING TITLE: HEREFORD STREET PICK-UP WINDOW AWNING - OPTION 2 (11 FEET)		JOB NUMBER: 2021-3048	DRAWN: Author	CHECK: Checker
	REVISION:				