

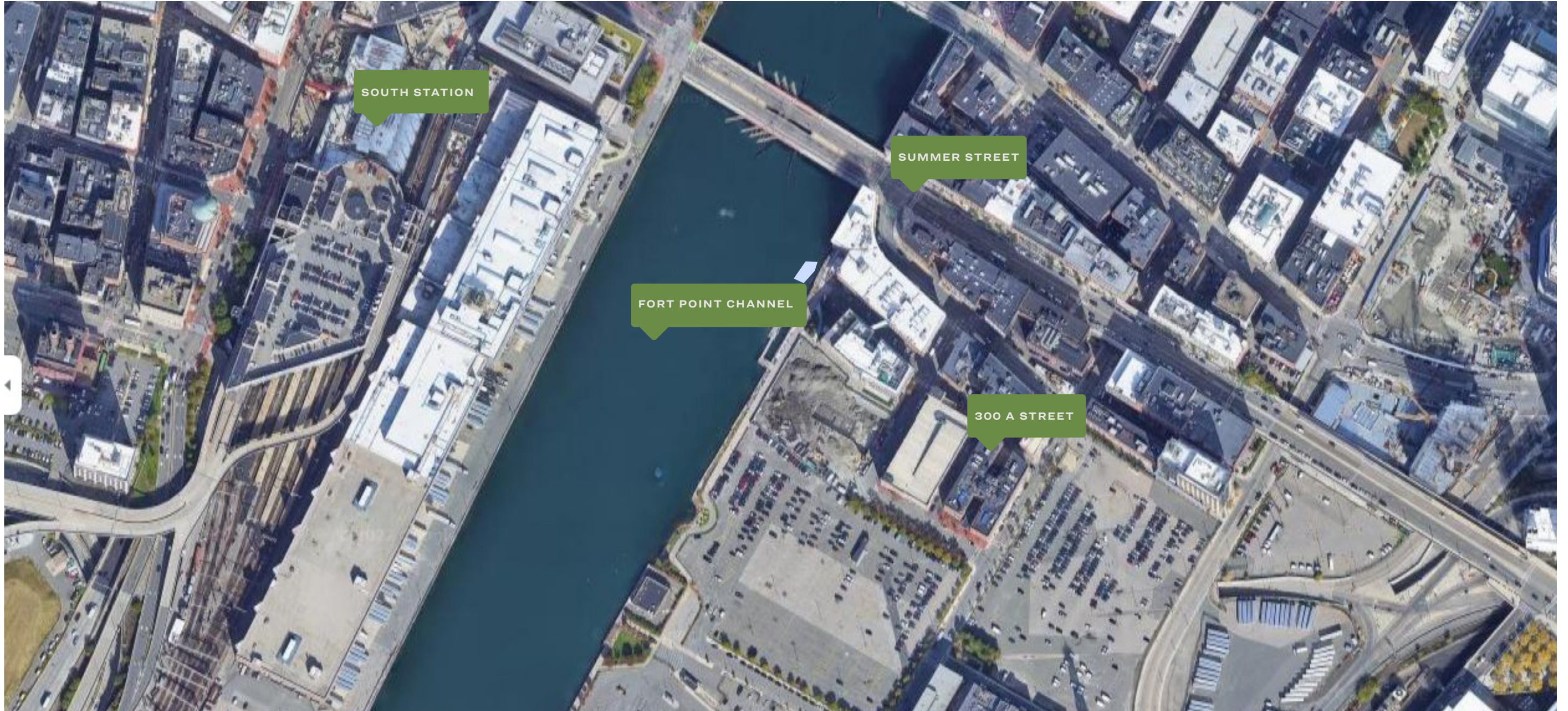


300 A Street

south facade finish upgrade

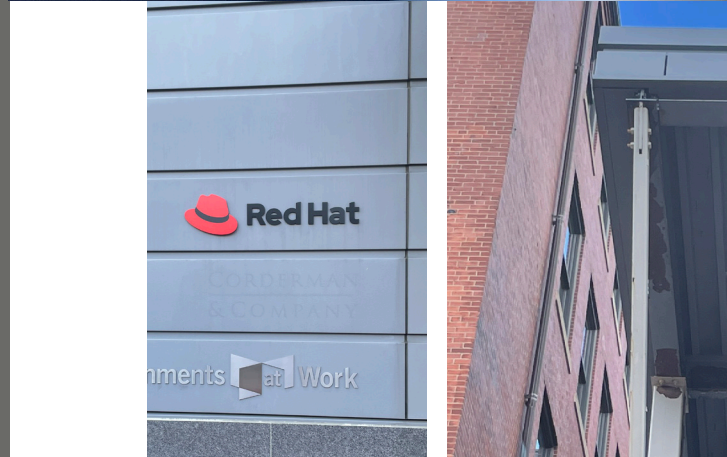
LOCUS PLAN
EXISTING DEFICIENCIES
PROPOSED IMPROVEMENTS

Locus Plan



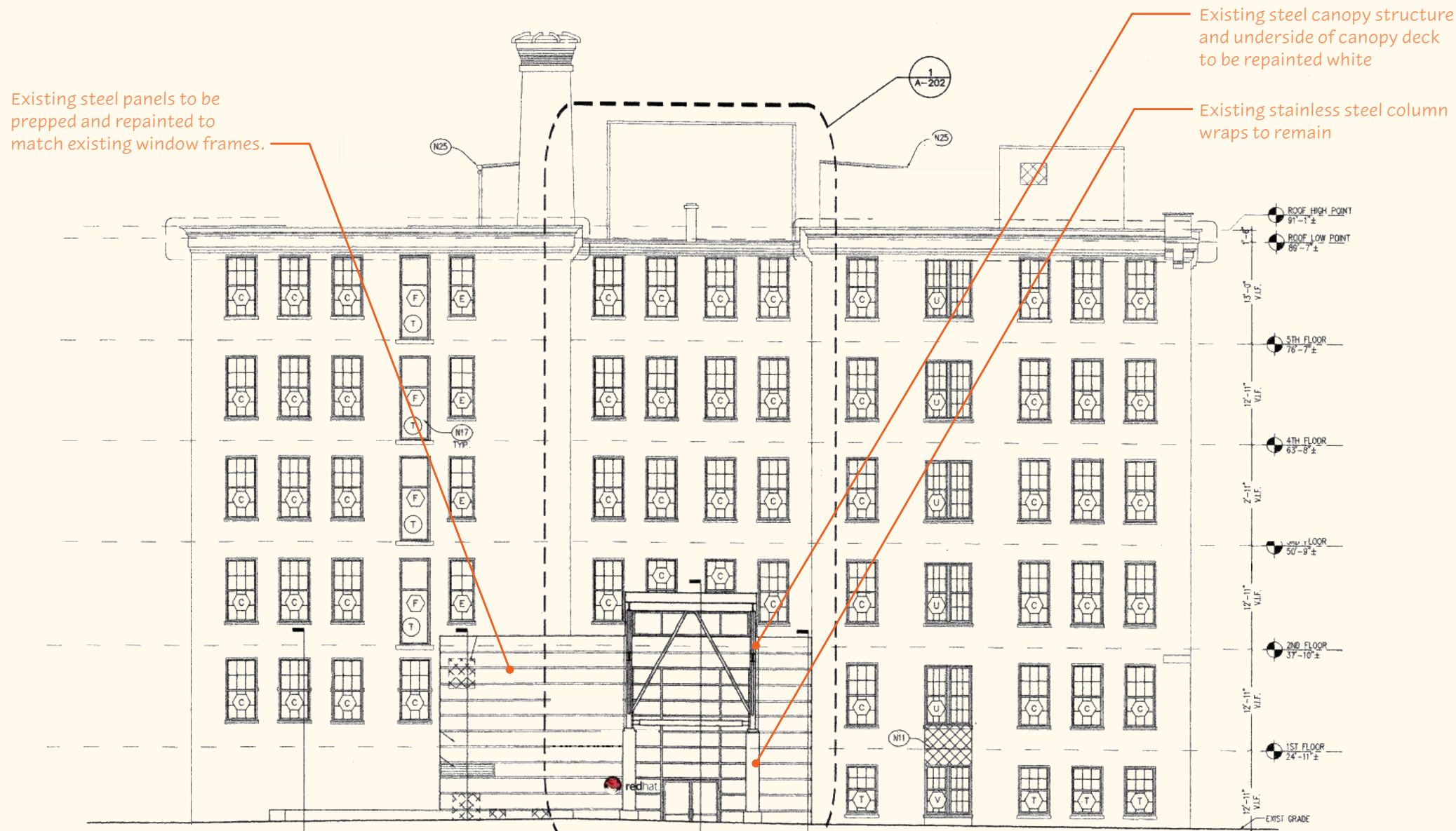
Existing Deficiencies

The existing south facade at 300 A Street is exhibiting significant finish deterioration including paint peeling, rusting and fading due to sun exposure.



Proposed Improvements

SOUTH FACADE ELEVATION



The existing canopy structure and metal panels will remain in place. The existing painted steel shall have loose and spalled paint removed while well adhered paint may remain.

Entire steel members will receive a lead-free, corrosion resistant coating - Tnemec AK02 Universal Primer and (2) coats of semi-gloss, low VOC epoxy paint - Tnemec Series 104 H.S. Epoxy for salt spray and weathering protection.

Proposed Improvements

Finish Rendering

The image to the left shows the facade in its existing condition while the image to the right shows the proposed color change to match the existing window frames.



Proposed Improvements

Finish Rendering

The image to the left shows the facade in its existing condition while the image to the right shows the proposed color change to match the existing window frames.



\ DYER BROWN & ASSOCIATES \ DYERBROWN.COM \

DYER BROWN