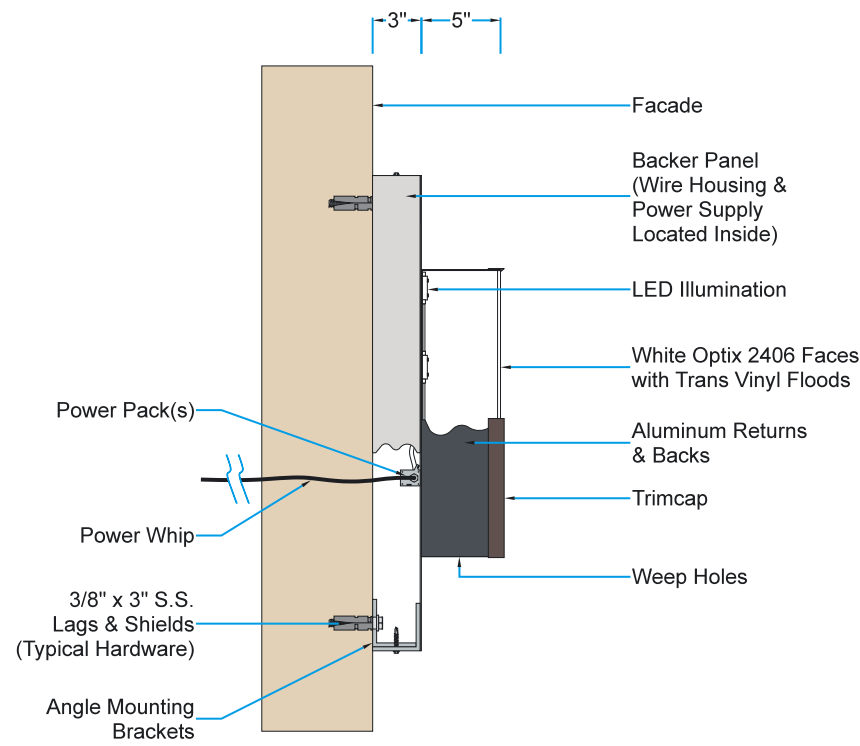


Power Pack Access in Lower Right to Match Existing Power Area

E1 Elevation: (Qty: 1) #12404.1 Face Illuminating Channel Letters Mounted to Backer Panel (NextGen)
34-1/2" x 62" = 14.8 Sq. Ft.



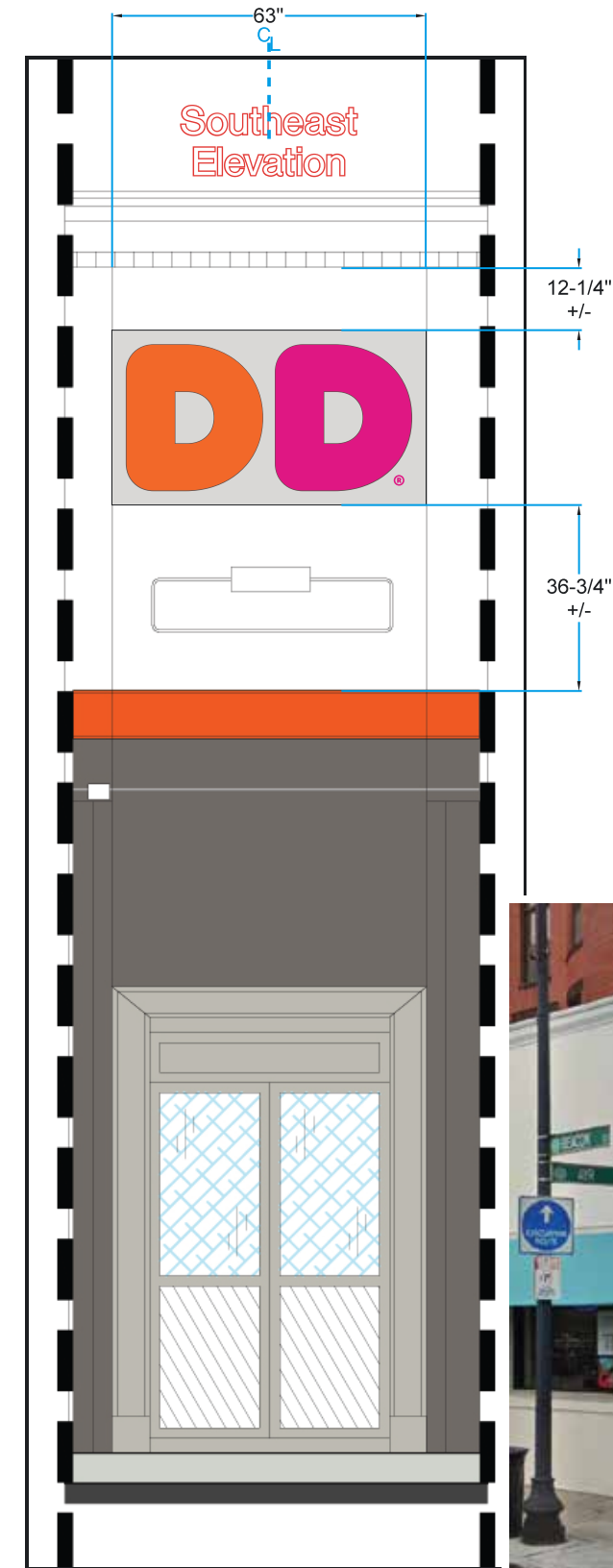
M1 Mounting Elevation

Description:
(Qty: 1) Backer panel with face illuminating channel letters mounted to face (NextGen)
Backer Panel:
* Welded aluminum angle frame
* Painted aluminum face & returns
* Backer to house wires & power pack(s)
* Note: Power box access to be located in lower right section of backer
Channel Letters:
* Stock aluminum returns
* White Optix 2406 Acrylic faces with translucent vinyl flooded on faces and stock trimcap
* LED illumination
* Surface applied vinyl "R" graphics
* Note: Power pack access at Top, Bottom or inside letter

Typeface/Logo:
* Dunkin' Sans Display

Colors:
* Backer - Painted PTE-04 Nebulous White (PMS Cool Gray 1c)(face & returns)
* Aluminum Returns - Stock Alumet Charcoal Gray (intended to match PMS 7540c)
* Faces - White Optix 2406 Acrylic
* Trimcap - Stock Bronze Jewelite 313
* Vinyl Graphics - DD Orange trans 3M 3630-3123
- DD Magenta trans 3M 3630-1379
- DD Orange H.P. 3M 220-14 ("R" graphics)
* LEDs - White

Installation:
* By ViewPoint
* Note: Power by Others
* This sign is intended to be installed in accordance with the requirements of Article 600 of the National Electrical Code (NEC) and/or other applicable Local Electrical Codes (LEC). This includes proper grounding and bonding of the sign.



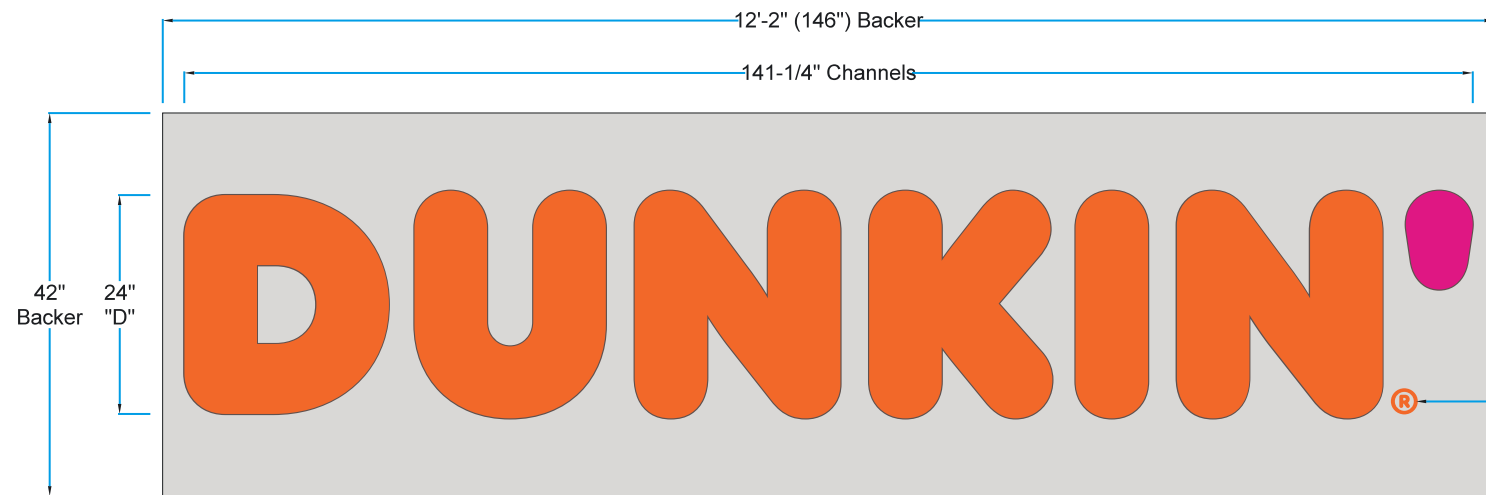
RE Rendering & Photo Elevations
Proposed Rendering & Existing Photo



Job: Dunkin'
Location: 1912 Beacon St. Brighton, MA
Account Manager: Sean Donovan
File: DD BrightonMA 1912Beacon dd chnl backer 1a.plt
Date: 12.17.21 D.75
Designer: Pete Rivera
Revisions: | Revisions: |

ViewPoint
SIGN AND AWNING
1.508.393.8200
FAX 1.508.393.4244

Customer Approval | Acct. Manager Approval | Production Approval



Power Pack Access in Lower Left to Match Existing Power Area

E1 Elevation: (Qty: 1) #12404.1 Face Illuminating Channel Letters Mounted to Backer Panel (NextGen)
42" x 146" = 42.5 Sq. Ft.

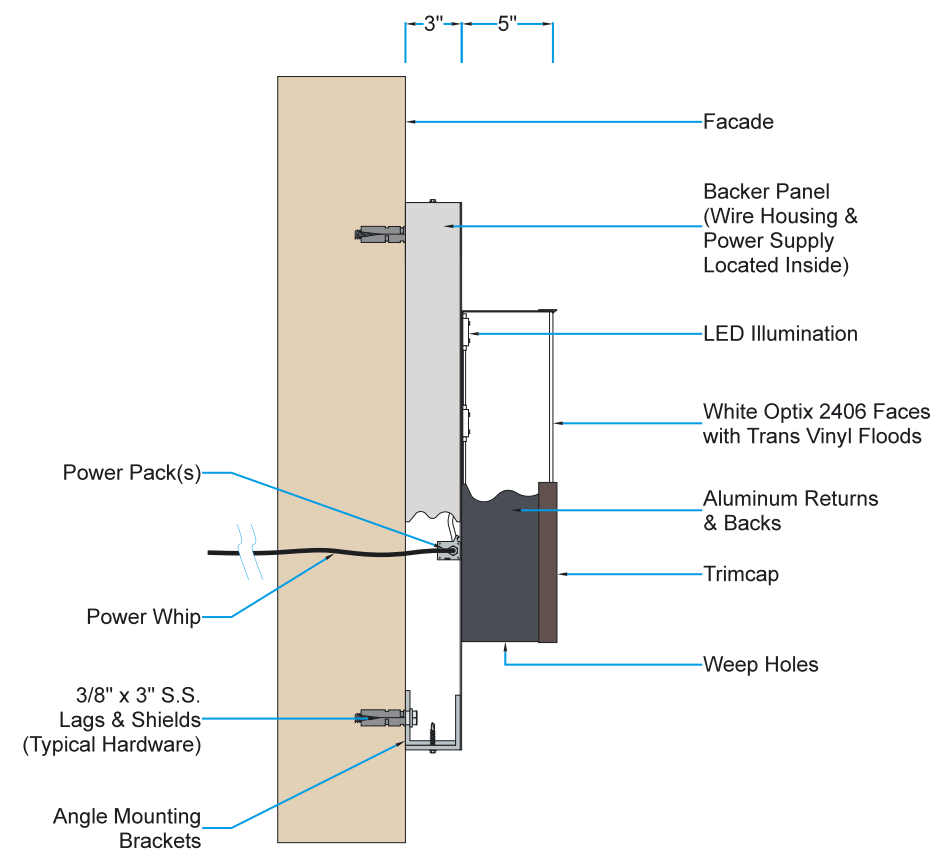
Description:
(Qty: 1) Backer panel with face illuminating channel letters mounted to face (NextGen)
Backer Panel:
* Welded aluminum angle frame
* Painted aluminum face & returns
* Backer to house wires & power pack(s)
* Note: Power pack access to be located in lower left section of backer
Channel Letters:
* Stock aluminum returns
* White Optix 2406 Acrylic faces with translucent vinyl flooded on faces and stock trimcap
* LED illumination
* Surface applied vinyl "R" graphics

Typeface/Logo:
* Dunkin' Sans Display

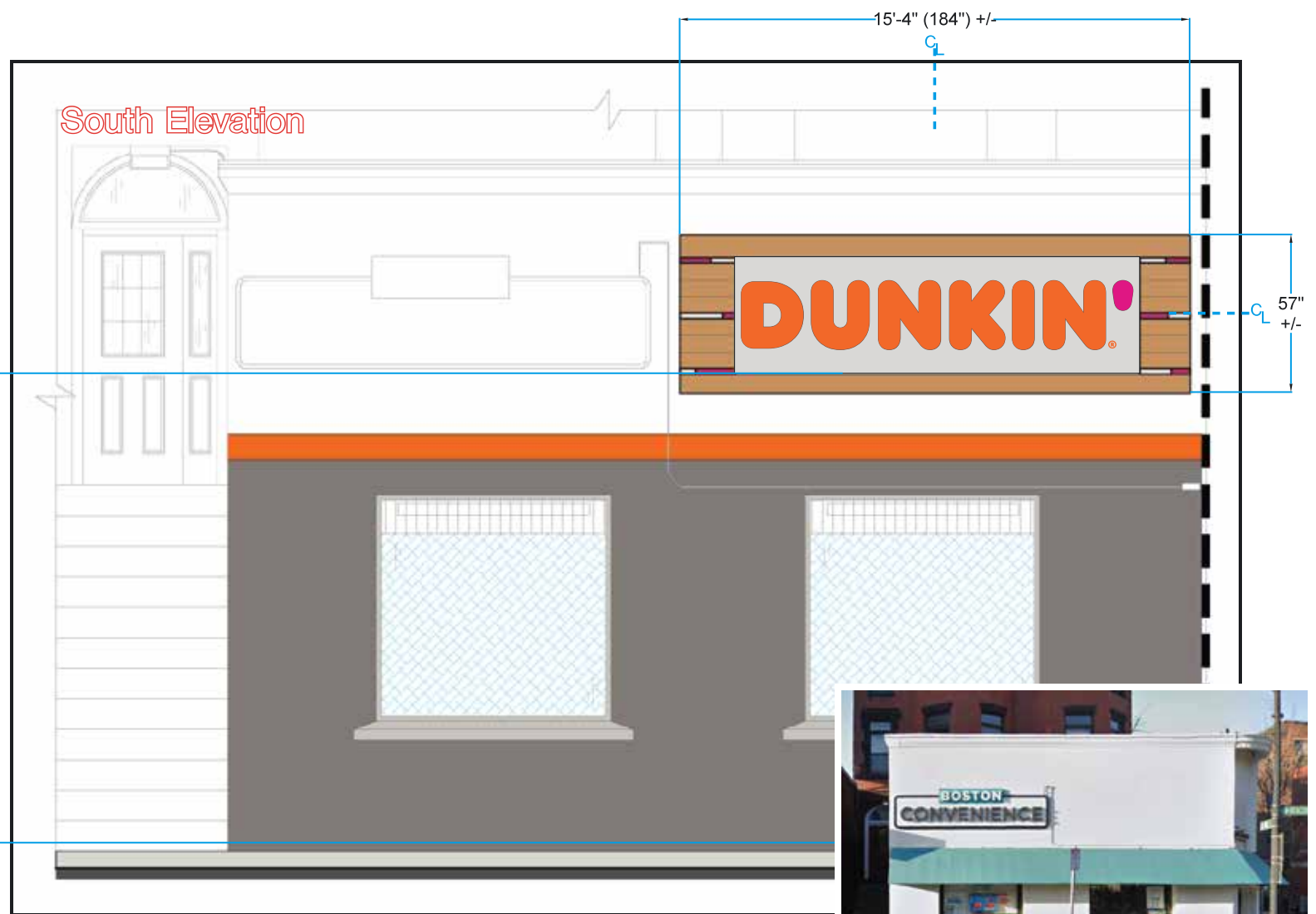
- Colors:
- * Backer - Painted PTE-04 Nebulous White (face & returns) (PMS Cool Gray 1c)
 - * Aluminum Returns - Stock Alumet Charcoal Gray (intended to match PMS 7540c)
 - * Faces - White Optix 2406 Acrylic
 - * Trimcap - Stock Bronze Jewelite 313
 - * Vinyl Graphics - DD Orange trans 3M 3630-3123
- DD Magenta trans 3M 3630-1379
- DD Orange H.P. 3M 220-14 ("R" graphics)
 - * LEDs - White

Installation:
* By ViewPoint
* Note: Power by Others
* This sign is intended to be installed in accordance with the requirements of Article 600 of the National Electrical Code (NEC) and/or other applicable Local Electrical Codes (LEC). This includes proper grounding and bonding of the sign.

Vinyl Graphics (Non-Illuminating)



M1 Mounting Elevation



RE Rendering & Photo Elevations: Proposed Rendering & Existing Photo

Job: Dunkin'
Location: 1912 Beacon St. Brighton, MA
Account Manager: Sean Donovan
File: DD BrightonMA 1912Beacon dunkin chnls backer 1a.plt
Date: 12.16.21 D1.0
Designer: Pete Rivera
Revisions: | Revisions: |

ViewPoint
SIGN AND AWNING
1.508.393.8200
FAX 1.508.393.4244

Customer Approval | Acct. Manager Approval | Production Approval

What the

BEST DRESSED



Drive-thru is Wearing

275 SINGLE PANEL SLIDER SERIES

For retail operators who want to get an edge on their competition by offering customers convenient, face-to-face service, the 275 Single Panel Slider is perfect. Ideal for fast food, walk-up service, and many other applications.

PRODUCT DESCRIPTIONS

- **4 Standard Sizes Available**

- 47 1/2"W x 43 1/2"H with a 19" wide x 36" high service opening
- 47 1/2"W x 35 3/4"H with a 19" wide x 28" high service opening
- 47 1/2"W x 35 3/4"H with a 15" wide x 28" high service opening
- 35 3/4"W x 35 3/4"H with a 14" wide x 28" high service opening (SC / MOER)
- Passes California restricted opening requirements of 432 square inches.

- **3 Modes of Operation**

- **275 Manual Open/Self Closing**

So simple to operate, the service door opens effortlessly and automatically slides shut when operator releases the handle.

- **275 M.O.E.R. (Manual Open/Electronic Release)**

The 275 Manual Open/Electronic Release Window has a manual open, self closing operation which electro-magnetically holds the window open until the operator finishes their transaction and steps out of the presence sensor. This unit is field adjustable to the length of time the window will stay open.

- **275 Electric**

With a hands-free operation the 275 Electric Window is ideal for heavy traffic situations. It provides easier operation and speedier service than the manual operating windows. This unit is field adjustable to the length of time the window will stay open.

- **Quality Construction**

Anodized aluminum extrusions, stainless steel and 1/4" tempered glass combine to give you an attractive window that not only enhances building exteriors, it will not rust, pit or weather. Track free bottom sill provides for a contaminant free surface.

- **Triple Security Locks**

The 275 automatically locks each time the window closes, providing security when the window is left unattended. When the drive-thru is closed, thumbturn & night security bar helps prevent outside entry. In high risk locations, an optional security bar set is available.



- **Fully Assembled, Ready to Install**

Ready Access windows are shipped completely preassembled, and fully glazed for lower installation costs. Normal installation takes less than two hours.

- **Unique Design**

Bottom sill is angled downward to provide protection against the elements such as rain, sleet, and snow.

- **Warranty and Service Support**

Your Ready Access window comes with a one year limited warranty on parts and labor. Each window is backed by a worldwide service organization.

- **STANDARD OPTIONS**

The 275 series window is available in statuary bronze, or clear anodized aluminum.

A retrofit kit is available for the 275 Self Closer that easily upgrades the window from a manual operation to a MOER or fully automatic electric operation.

Right to left or left to right opening available (as seen from outside view).

For non food service applications window can be made manual open / manual close.

- **CUSTOM OPTIONS**

Custom sizes are available to satisfy any unusual operations requirement or health department code.

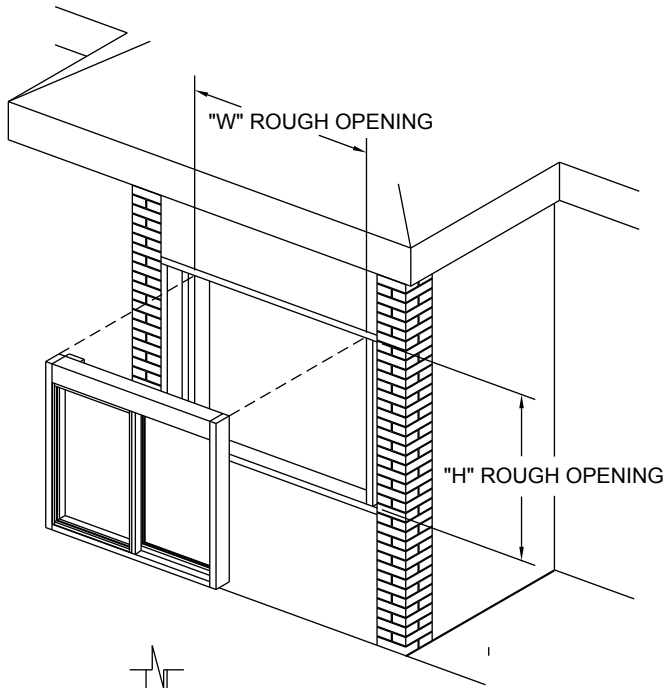
Tinted glass is available upon request.

Powder coat painting is available in a wide range of custom colors.

ARRIVES READY FOR INSTALLATION

Your Ready Access window is shipped completely assembled and ready for installation. Comes with instructions.

275 SERIES



275 - 47-1/2"W x 43-1/2"H

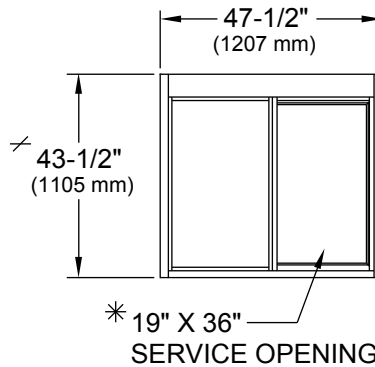
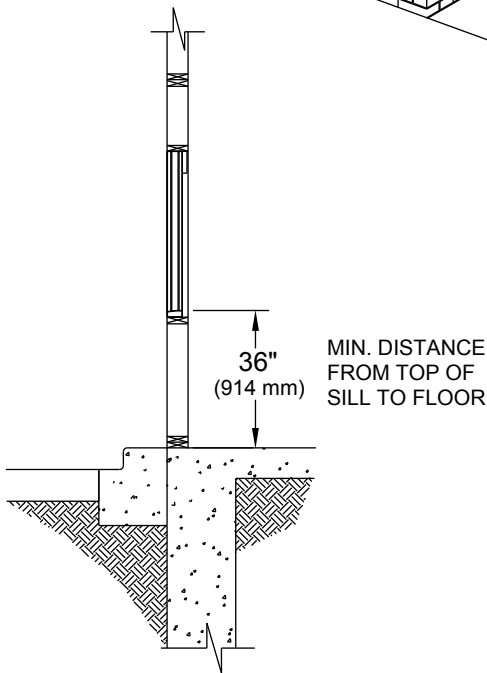
Glazing Rough Opening =
47-3/4"W (1213 mm) x 43-3/4"H (1111 mm)
Masonry Rough Opening =
48"W (1219 mm) x 44"H (1118 mm)

275 - 47-1/2"W x 35-3/4"H

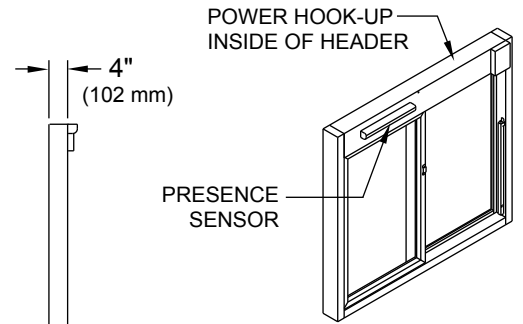
Glazing Rough Opening =
47-3/4"W (1213 mm) x 36"H (914 mm)
Masonry Rough Opening =
48"W (1219 mm) x 36-1/4"H (921 mm)

275 - 35-3/4"W x 35-3/4"H

Glazing Rough Opening =
36"W (914 mm) x 36"H (914 mm)
Masonry Rough Opening =
36-1/4"W (921 mm) x 36-1/4"H (921 mm)



FOR FULLY AUTOMATIC ELECTRIC UNIT



BOTH SIDE FRAMES ARE HOLLOW FOR ELECTRICAL ACCESS FROM EACH CORNER LEADING TO THE HEADER.

ELECTRICAL REQUIREMENTS

USA (DOMESTIC) : 115 vac - 60 Htz WITH A 15 amp BRANCH CIRCUIT
INTERNATIONAL : 220/240 vac - 50/60 Htz WITH A MAX.
8 amp BRANCH CIRCUIT

* TWO STANDARD WINDOW HEIGHTS

43-1/2" H WITH 19"W x 36"H SERVICE

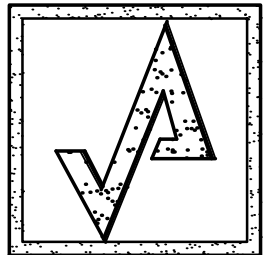
35-3/4" H WITH 19"W x 28"H + 15"W x 28"H SERVICE

Window must be installed square and plumb.

Installation illustrations are for reference only. Construction and local codes will determine proper installation of window.

Contact Ready Access for more information on installation.



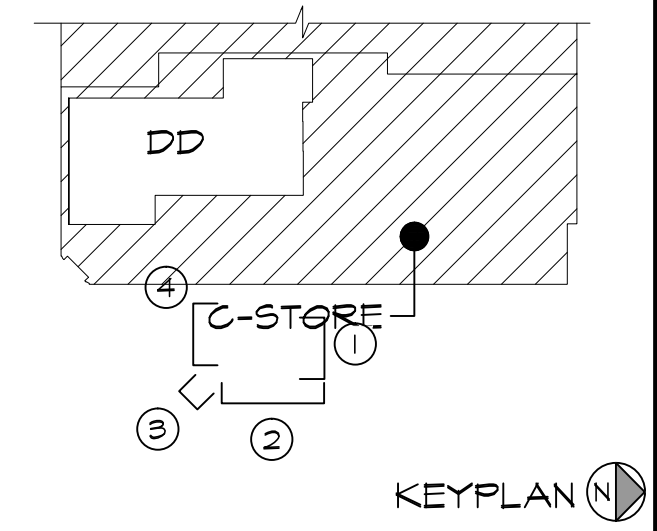


AHARONIAN & ASSOCIATES INC. ARCHITECTS

310 George Washington Highway
Suite 100
Smithfield, Rhode Island
0 2 9 1 7
T 401-232-5010
F 401-232-5080
WWW.ARCH-ENG.COM

DISCLAIMER

OWNERSHIP AND USE OF DOCUMENTS, DRAWINGS AND SPECIFICATIONS ARE INSTRUMENTS OF PROFESSIONAL SERVICE AND SHALL REMAIN THE PROPERTY OF THE ARCHITECT. THESE DOCUMENTS ARE NOT TO BE USED, IN WHOLE OR IN PART, FOR ANY OTHER PROJECTS OR PURPOSES OR BY ANY OTHER PARTIES THAN THOSE PROPERLY AUTHORIZED BY CONTRACT WITHOUT THE EXPRESS WRITTEN AUTHORIZATION OF THE ARCHITECT.



KEYPLAN

REVISIONS

| NUMBER | REMARKS | DATE |
|--------|---------|------|
| | | |
| | | |
| | | |

FOR CONSTRUCTION

PROJECT TITLE

DUNKIN'
PC# 363480
IMAGE: NEXTGEN WARM PALETTE

1912 BEACON STREET
BRIGHTON, MA 02135
Suffolk County

DRAWING TITLE
EXTERIOR ELEVATIONS, SECTIONS & DTLS

DATE: SEPT 22, 2021 PROJ NO: 21062
DRAWN BY: JAA CHECKED BY: OR

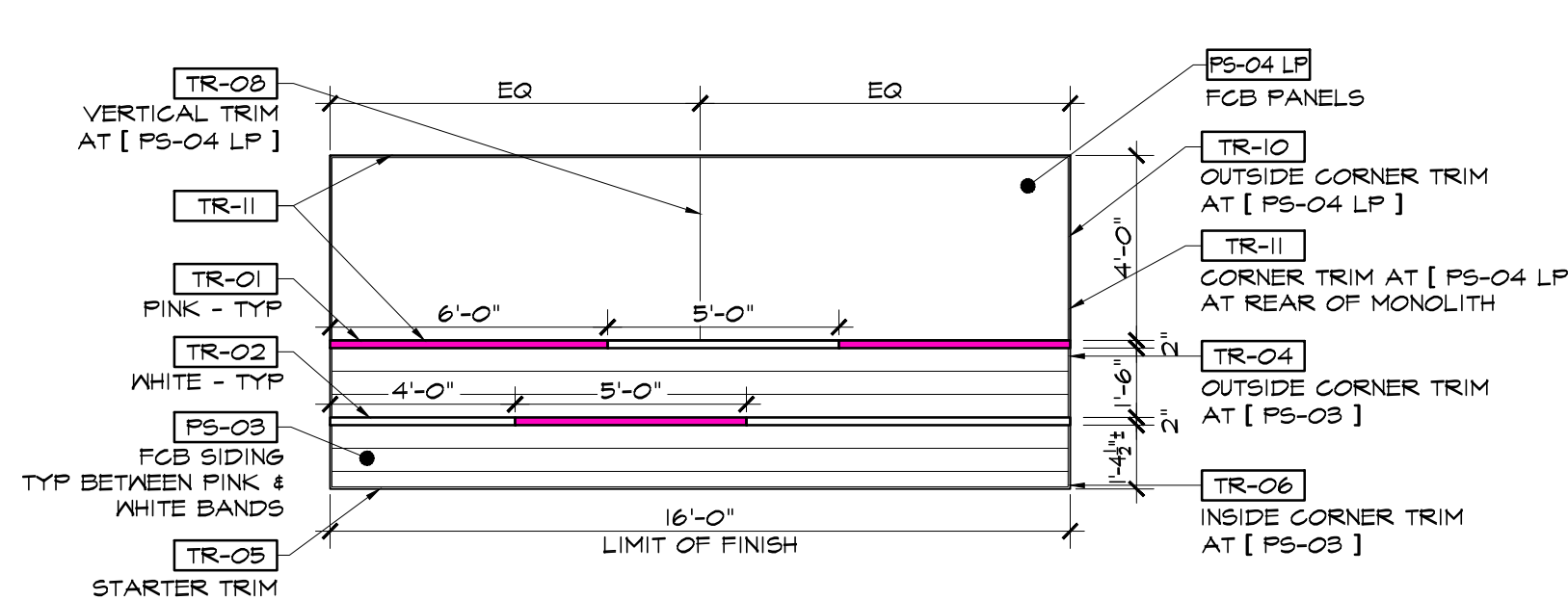
DRAWING NUMBER

A3.1

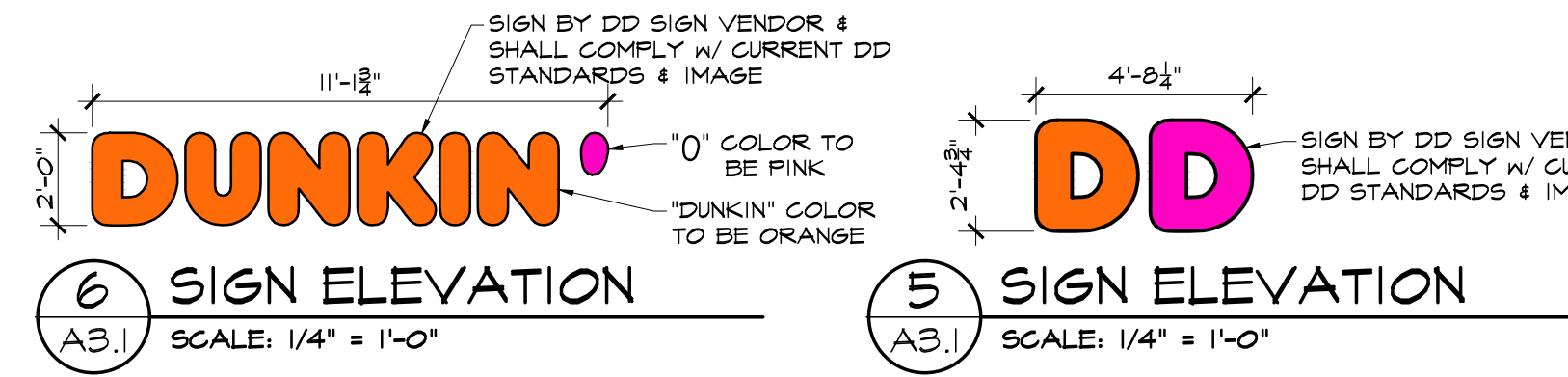
ACCENT WALL NOTE
GC TO COORD W/ CM, SIGN VENDOR, & OWNER PRIOR TO START OF WORK IF GRAPHICS ("BRIGHTON RUNS ON DUNKIN'") ARE ALLOWED. IF NOT, THEN EXISTING FINISH REMOVAL, ACCENT WALL CONSTRUCTION & LIGHT FIXTURES SHALL NOT BE INSTALLED. GC TO INCLUDE THIS AS A LINE ITEM IN THEIR BID.

COLOR LEGEND

| | |
|--|----------------------|
| | -01 'SAUNTLET GRAY' |
| | -02 'CHARCOAL' |
| | -03 'WOOD' |
| | -04 'OFF WHITE' |
| | -12 'DUNKIN' PINK' |
| | -13 'DUNKIN' ORANGE' |



7 MONOLITH ELEVATION
A3.1 SCALE: 1/4" = 1'-0"



6 SIGN ELEVATION A3.1 SCALE: 1/4" = 1'-0"
5 SIGN ELEVATION A3.1 SCALE: 1/4" = 1'-0"

EXTERIOR ELEVATION NOTES

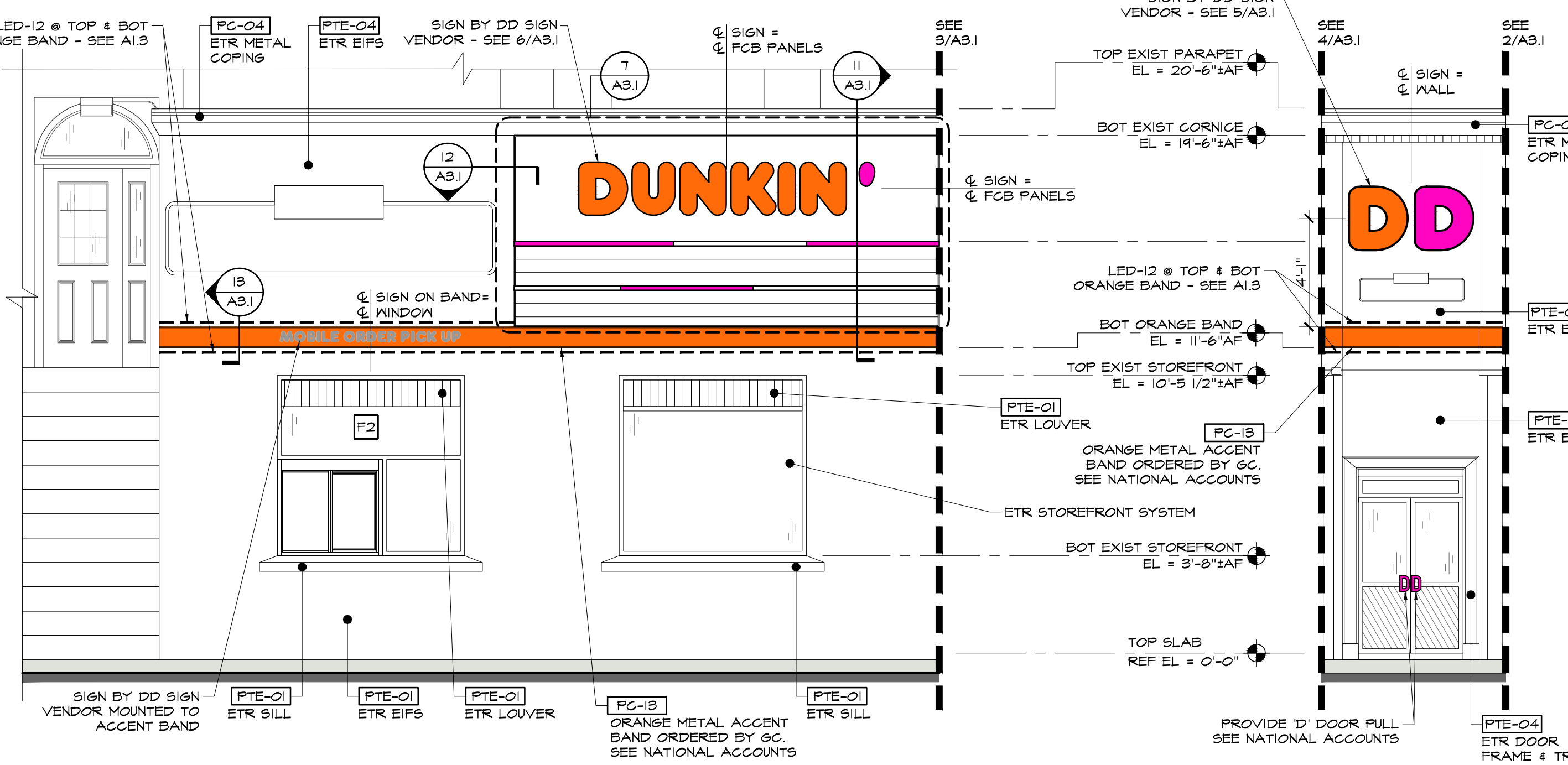
- CLEAN & PREP ALL SURFACES AS REQ'D PER PAINT MANUF SPECIFICATIONS PRIOR TO PAINTING. VERIFY CONDITION OF EXISTING MATERIALS - REPAIR / REPLACE MATERIALS TO MATCH EXISTING AS REQ'D. APPLY PAINT IN STRICT ACCORDANCE WITH PAINT MANUF SPECIFICATIONS.
- REMOVE ALL SURFACE MTD ITEMS @ EXIST EXTERIOR WALL AS REQ'D TO APPLY SCHEDULED FINISHES. SALVAGE ALL ITEMS FOR REINSTALLATION IN SAME LOCATIONS UNO.

BUILDING SIGN NOTES

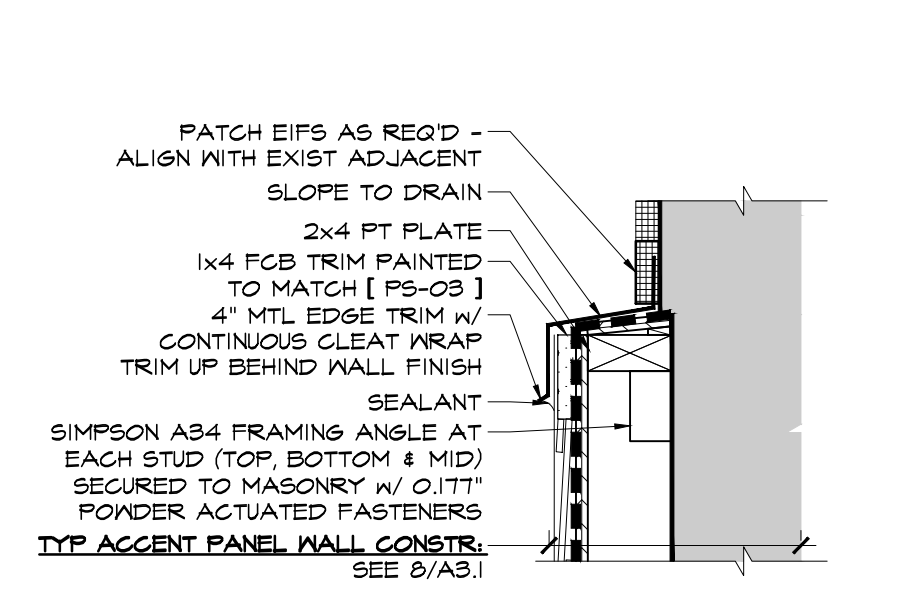
- FACE TO BE FORMED CLEAR POLYCARBONATE, DECORATED SECOND SURFACE VINYL.
- VINYL COLORS TO BE: DD ORANGE 3M #3630-3123, DD MAGENTA 3M #3630-1374.
- ILLUMINATION: WHITE NICHIA LEDS.
- SEE NATIONAL ACCOUNTS FOR ORDERING INFORMATION.

BUILDING SIGN SCHEDULE

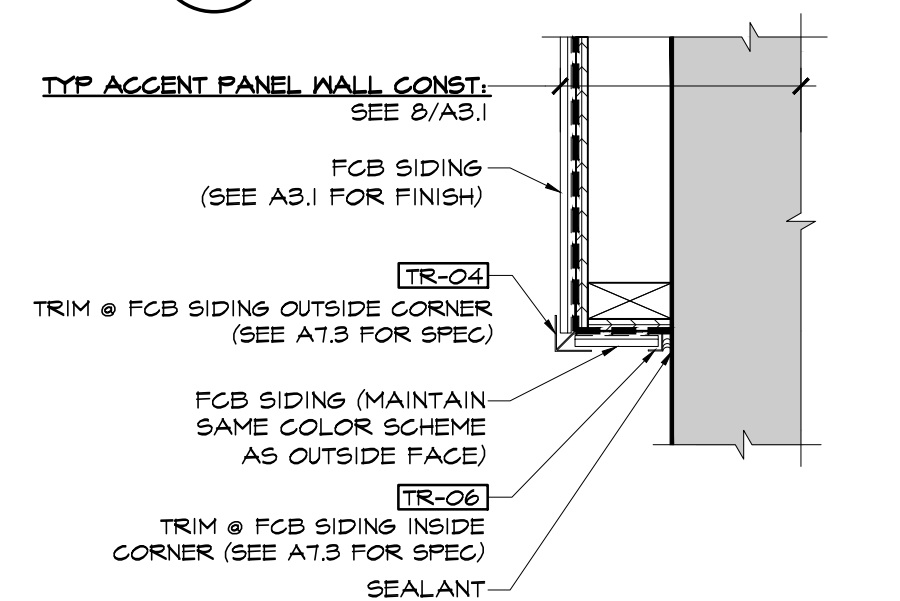
| QTY | LOCATION | OVERALL DIMENSIONS | LETTERS | AREA |
|-----|---------------------|----------------------------------|-----------|----------|
| 1 | BUILDING, SOUTHEAST | 4'-8 1/4" L x 2'-9 3/4" H x 5' D | 27 3/4" H | 11.24 SF |
| 1 | BUILDING, SOUTH | 11'-1 3/4" L x 2'-0" H x 5' D | 24" H | 22.8 SF |



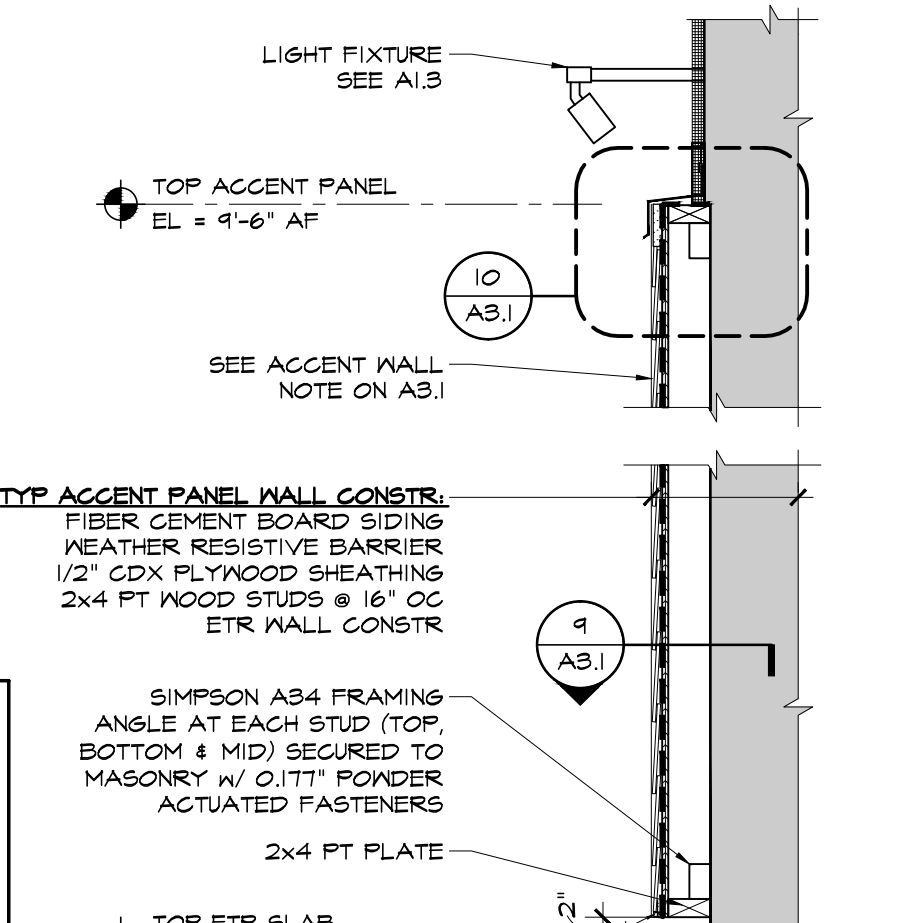
4 SOUTH ELEVATION A1.1 SCALE: 1/4" = 1'-0"
3 SOUTHEAST ELEVATION A1.1 SCALE: 1/4" = 1'-0"



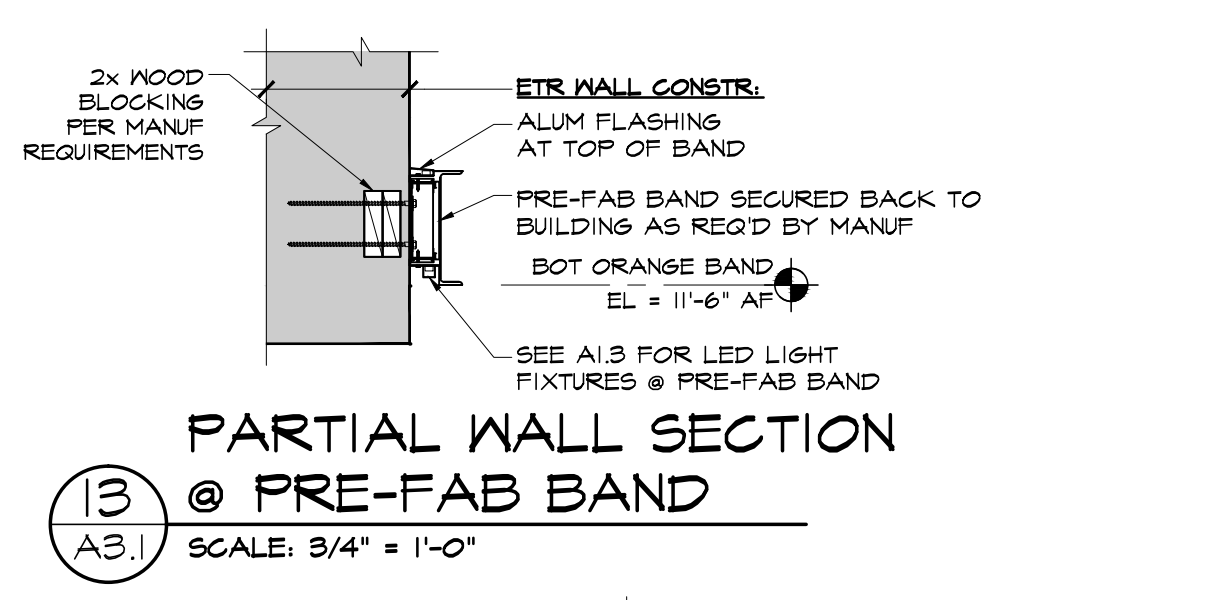
10 TOP OF ACCENT WALL DETAIL
A3.1 SCALE: 3/4" = 1'-0"



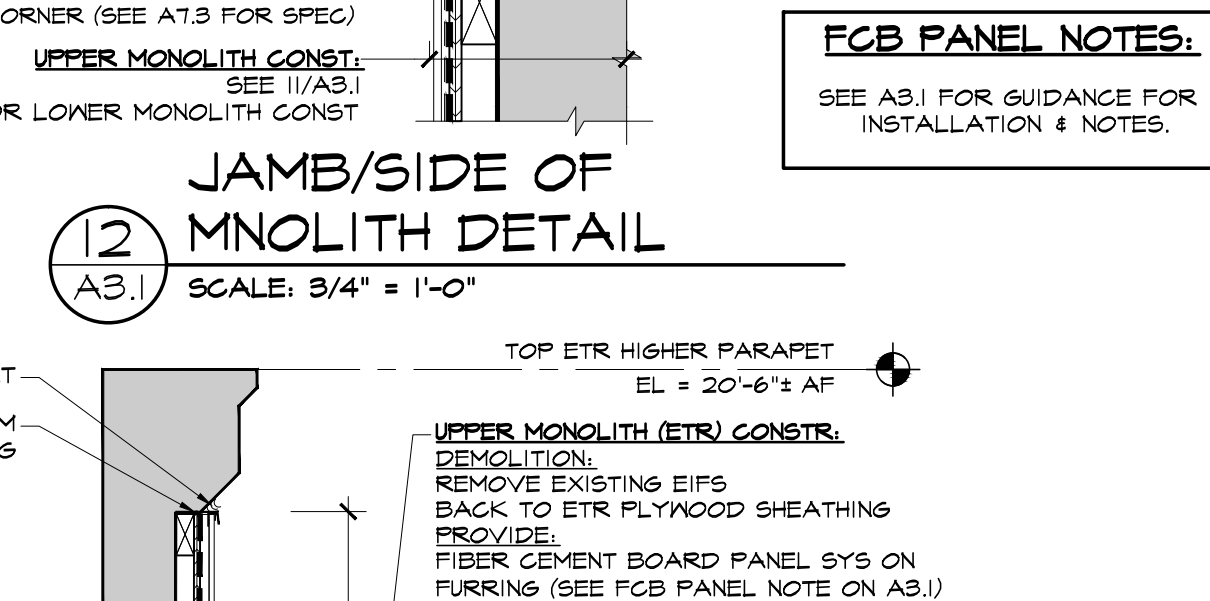
9 JAMB/SIDE OF ACCENT WALL DETAIL
A3.1 SCALE: 3/4" = 1'-0"



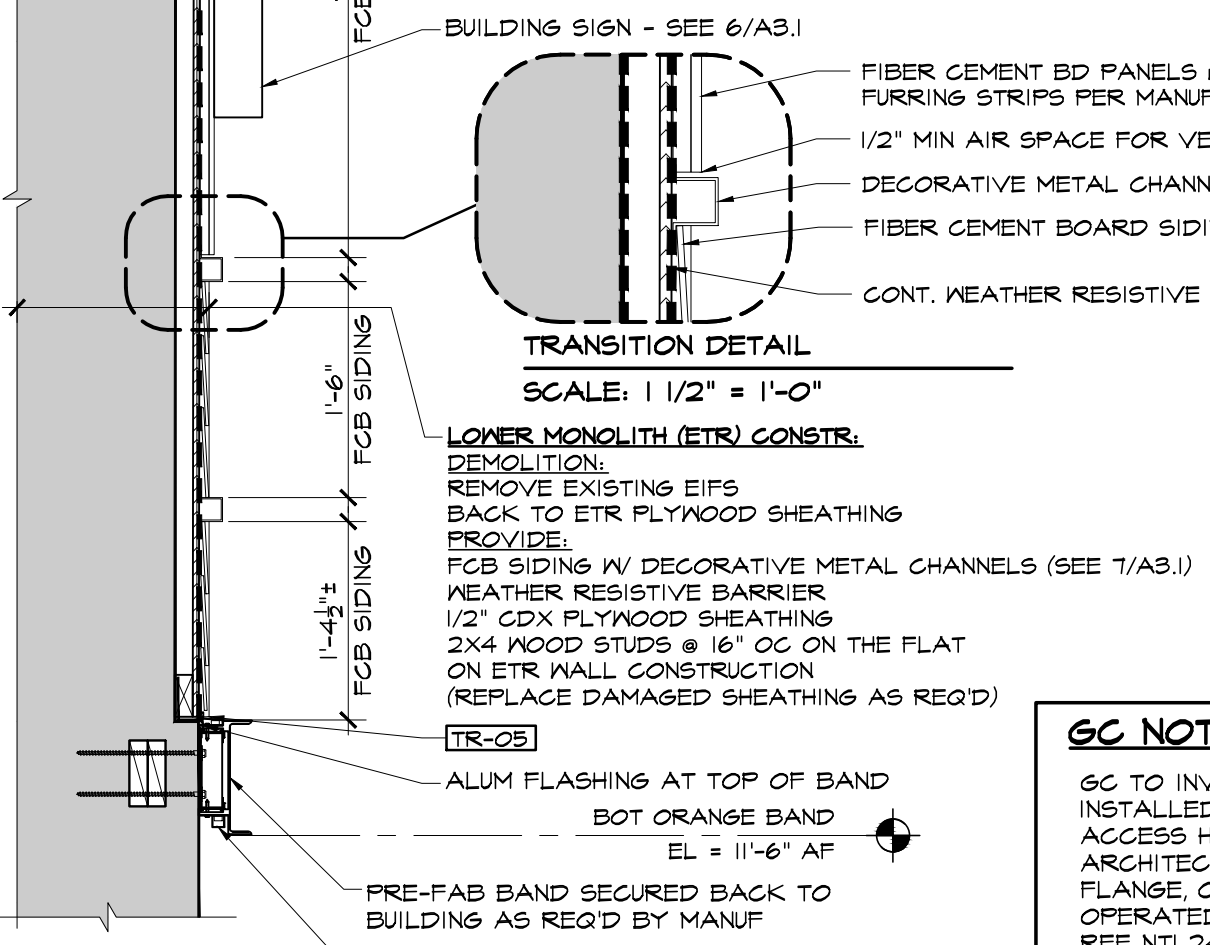
8 ACCENT WALL SECTION
A3.1 SCALE: 3/4" = 1'-0"



13 PARTIAL WALL SECTION @ PRE-FAB BAND
A3.1 SCALE: 3/4" = 1'-0"



12 JAMB/SIDE OF MNOLITH DETAIL
A3.1 SCALE: 3/4" = 1'-0"



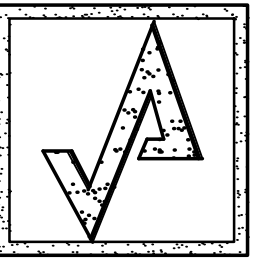
11 MONOLITH SECTION
A3.1 SCALE: 3/4" = 1'-0"

GC NOTE
GC TO INVESTIGATE IF ACCESS HATCH CAN BE INSTALLED BEHIND PARAPET. IF SO, PROVIDE ACCESS HATCH: NYSTROM 16 GAUGE STEEL ARCHITECTURAL ACCESS DOOR W/ 1" EXPOSED FLANGE, CONCEALED SPRING BUTTON HINGE, KEY OPERATED CAM LATCH, GALVANNEALED FINISH. REF NTL24x24BSL. IF ACCESS HATCH CAN NOT BE INSTALLED, COORD W/ SIGN VENDOR ON ALTERNATE ACCESS OPTIONS.

NOTE
ALL EXTERIOR WOOD FRAMING @ ACCENT WALL TO BE PRESSURE TREATED.

FCB PANEL NOTES:
SEE A3.1 FOR GUIDANCE FOR INSTALLATION & NOTES.

© AHARONIAN & ASSOCIATES INC. 2021



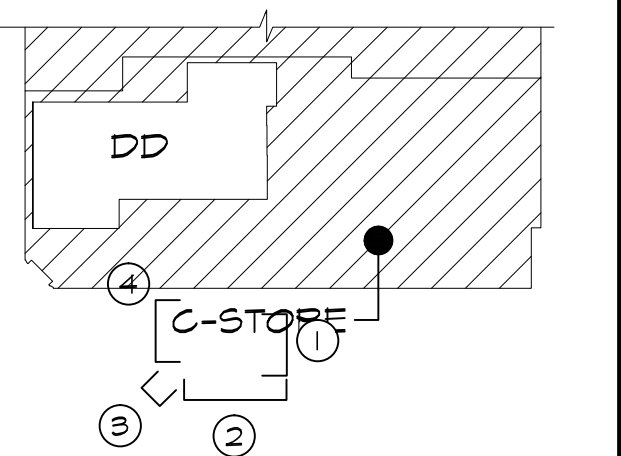
**AHARONIAN
& ASSOCIATES INC.
ARCHITECTS**

310 George Washington Highway
Suite 100
Smithfield, Rhode Island
0 2 9 1 7

T 401-232-5010
F 401-232-5080
WWW.ARCH-ENG.COM

DISCLAIMER

OWNERSHIP AND USE OF DOCUMENTS, DRAWINGS AND SPECIFICATIONS ARE INSTRUMENTS OF PROFESSIONAL SERVICE AND SHALL REMAIN THE PROPERTY OF THE ARCHITECT. THESE DOCUMENTS ARE NOT TO BE USED, IN WHOLE OR IN PART, FOR ANY OTHER PROJECTS OR PURPOSES OR BY ANY OTHER PARTIES THAN THOSE PROPERLY AUTHORIZED BY CONTRACT WITHOUT THE EXPRESS WRITTEN AUTHORIZATION OF THE ARCHITECT.



KEYPLAN

REVISIONS

| NUMBER | REMARKS | DATE |
|--------|---------|------|
| | | |
| | | |
| | | |
| | | |

FOR CONSTRUCTION

PROJECT TITLE

DUNKIN'
PC# 363480
IMAGE: NEXTGEN WARM PALETTE

1912 BEACON STREET
BRIGHTON, MA 02135
Suffolk County

DRAWING TITLE

**COLORED EXTERIOR
ELEVATIONS**

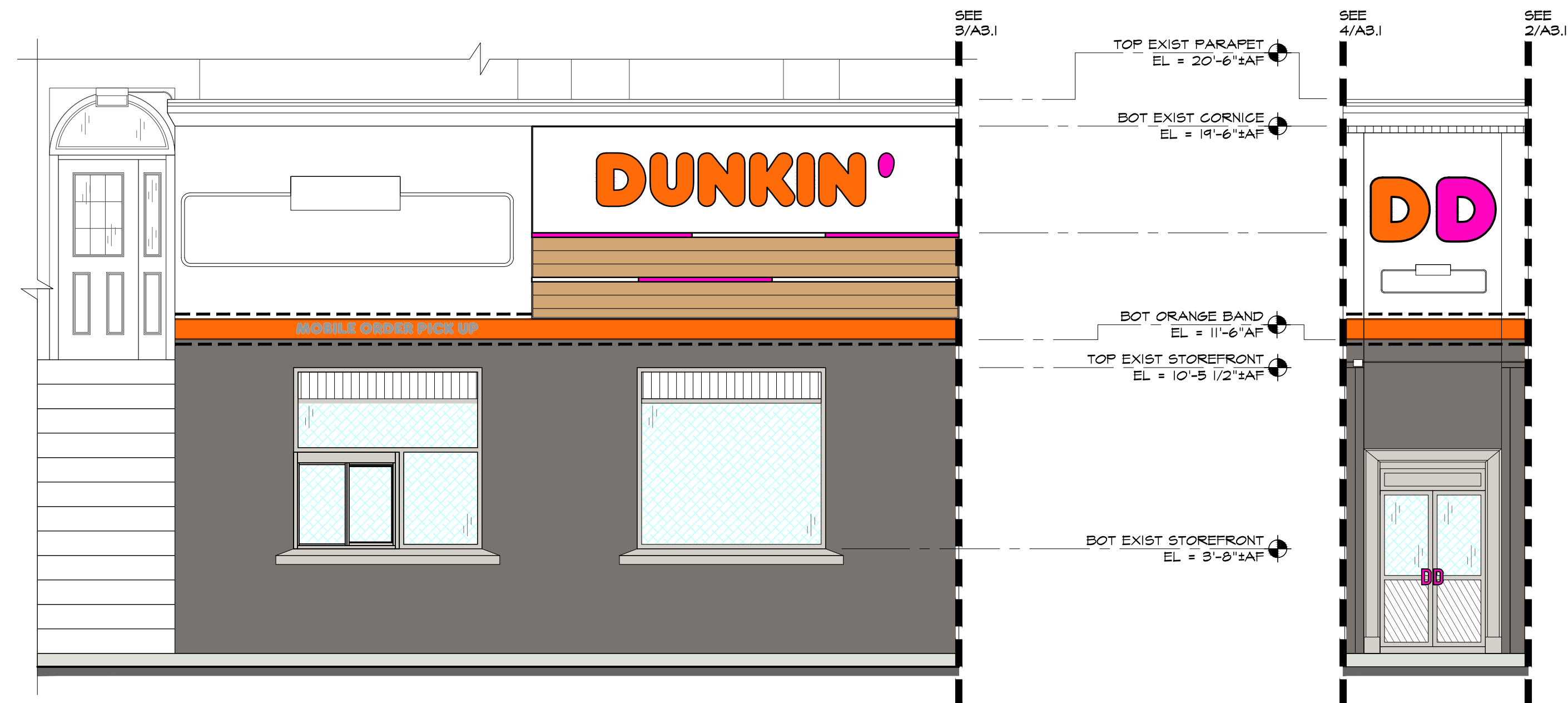
| | |
|-----------------------|------------------|
| DATE SEPT 22, 2021 | PROJ NO 21062 |
| DRAWN BY JAA | CHECKED BY OR |

DRAWING NUMBER

A3.2

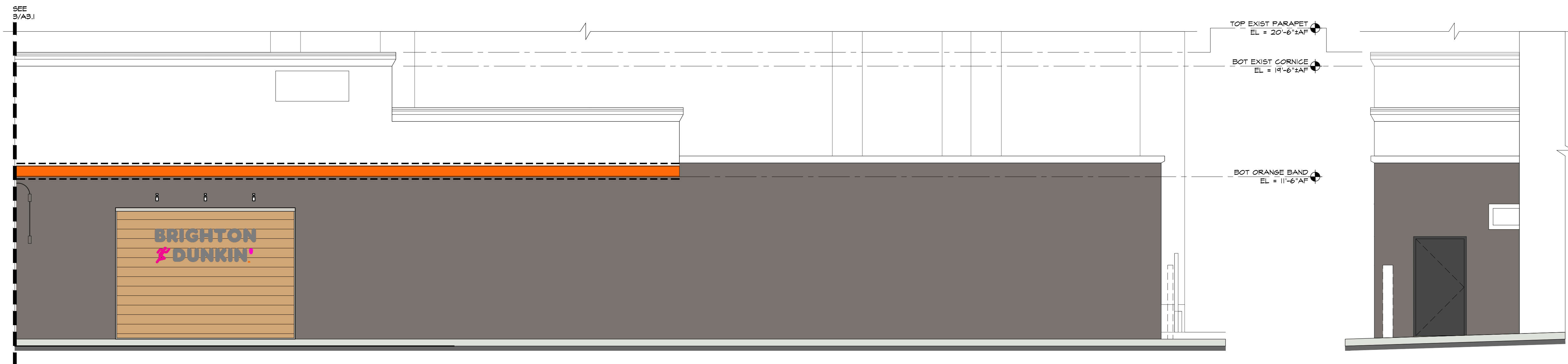
COLOR LEGEND

| | |
|---|-------------------------|
| ■ | -01 "SAUNTLET GRAY" |
| ■ | -02 "CHARCOAL" |
| ■ | -03 "WOOD" |
| ■ | -04 "OFF WHITE" |
| ■ | -12 "DUNKIN' PINK" |
| ■ | -13 "DUNKIN' ORANGE" |



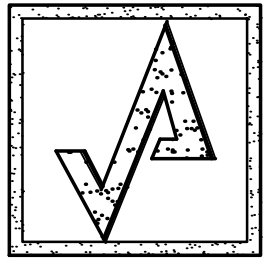
4 SOUTH ELEVATION
A1.1 SCALE: 1/4" = 1'-0"

3 SOUTHEAST ELEVATION
A1.1 SCALE: 1/4" = 1'-0"



2 EAST ELEVATION
A1.1 SCALE: 1/4" = 1'-0"

1 NORTH ELEVATION
A1.1 SCALE: 1/4" = 1'-0"



**AHARONIAN
& ASSOCIATES INC.**
ARCHITECTS

310 George Washington Highway
Suite 100
Smithfield, Rhode Island
02917
T 401-232-5010
F 401-232-5080
WWW.ARCH-ENG.COM

DISCLAIMER

OWNERSHIP AND USE OF DOCUMENTS, DRAWINGS AND SPECIFICATIONS ARE INSTRUMENTS OF PROFESSIONAL SERVICE AND SHALL REMAIN THE PROPERTY OF THE ARCHITECT. THESE DOCUMENTS ARE NOT TO BE USED, IN WHOLE OR IN PART, FOR ANY OTHER PROJECTS OR PURPOSES OR BY ANY OTHER PARTIES THAN THOSE PROPERLY AUTHORIZED BY CONTRACT WITHOUT THE EXPRESS WRITTEN AUTHORIZATION OF THE ARCHITECT.

REVISIONS

| NUMBER | REMARKS | DATE |
|--------|---------|------|
| | | |
| | | |
| | | |
| | | |

FOR CONSTRUCTION

PROJECT TITLE

DUNKIN'
PC# 363480
IMAGE: NEXTGEN WARM PALETTE

1912 BEACON STREET
BRIGHTON, MA 02135
Suffolk County

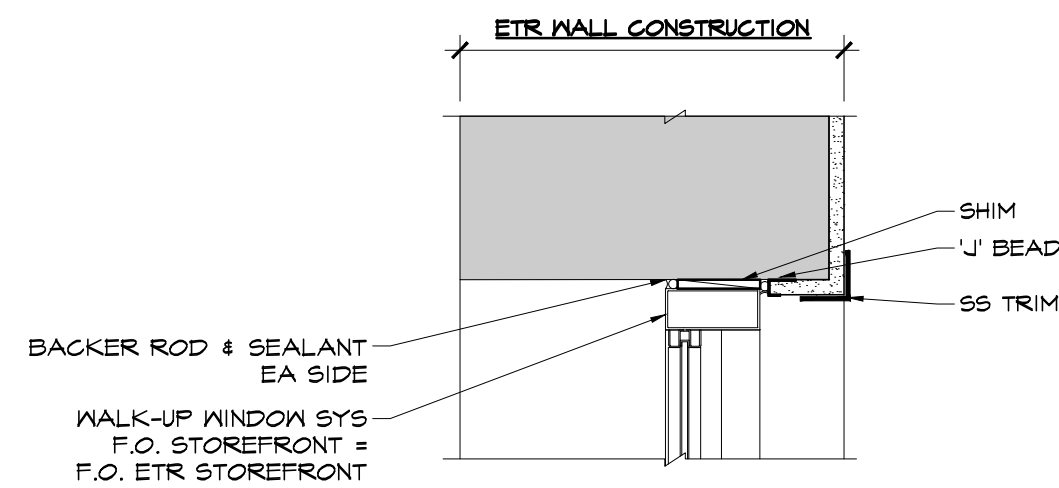
DRAWING TITLE

**DOOR &
STOREFRONT
SCHEDULE & DTLs**

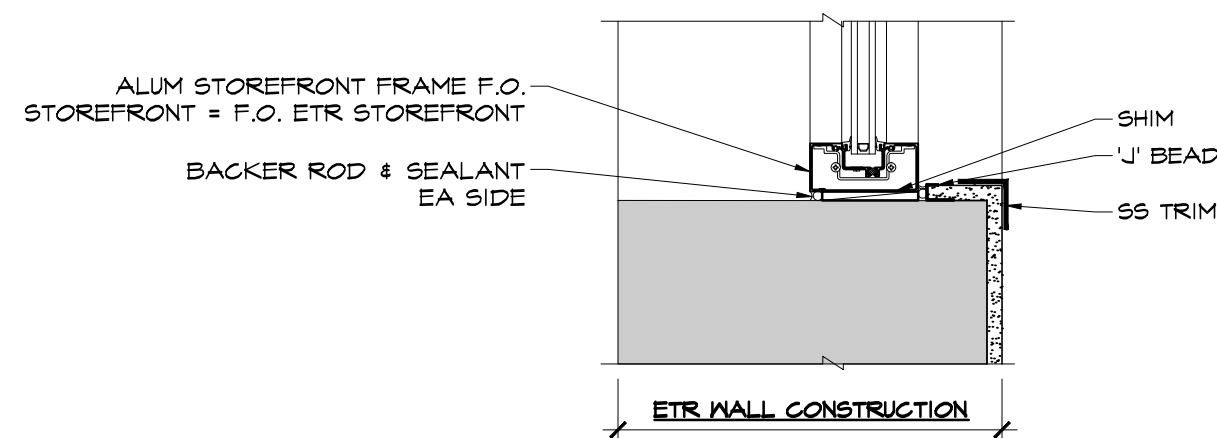
| | |
|---------------|------------|
| DATE | PROJ NO |
| SEPT 22, 2021 | 21062 |
| DRAWN BY | CHECKED BY |
| OR/ERM | OR |

DRAWING NUMBER

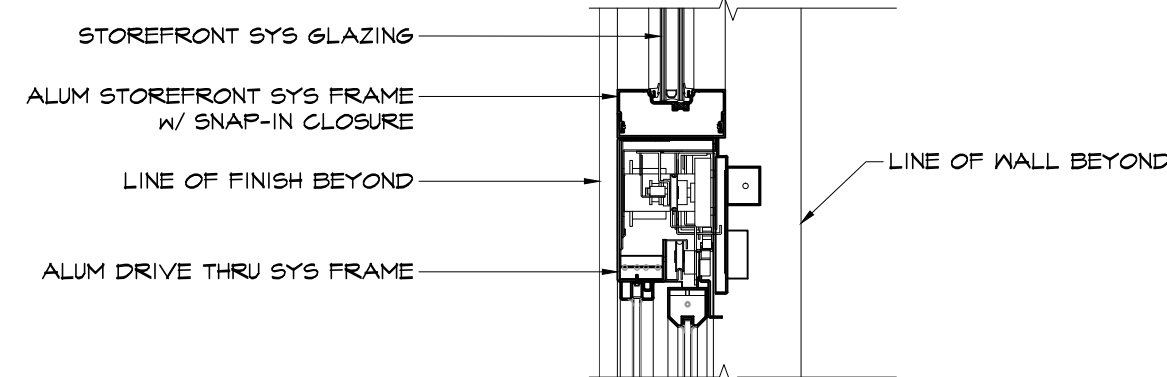
A2.1



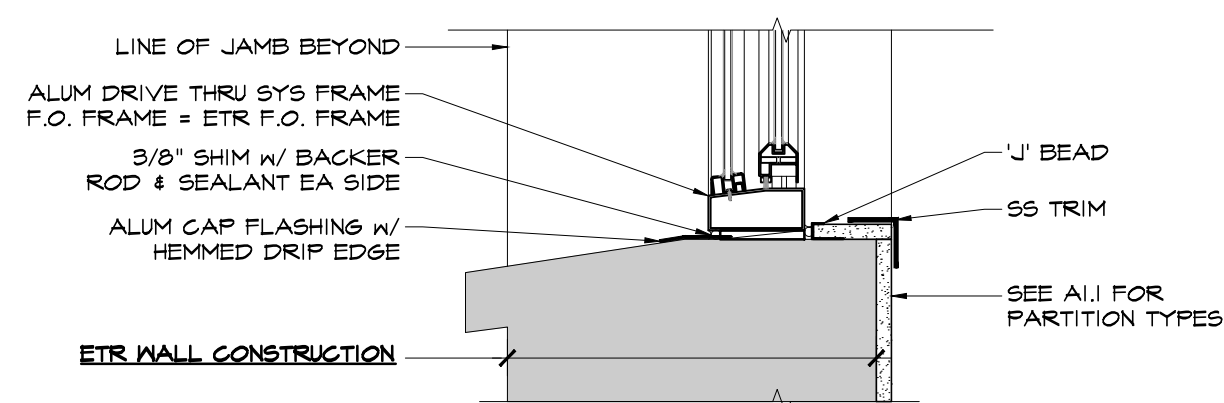
**9 JAMB DETAIL @
DRIVE-THRU WINDOW**
A2.1 SCALE: 1/2" = 1'-0"



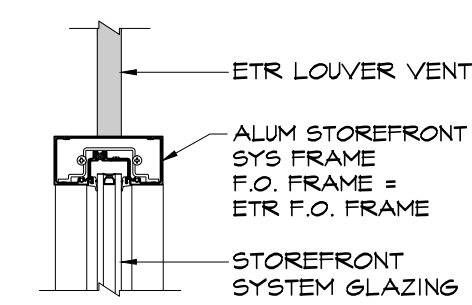
8 JAMB DETAIL
A2.1 SCALE: 1/2" = 1'-0"



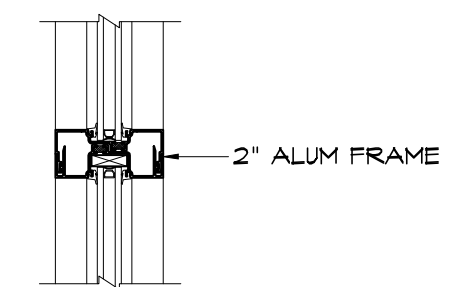
**7 D/T WINDOW
SYSTEM HEAD DETAIL**
A2.1 SCALE: 1/2" = 1'-0"



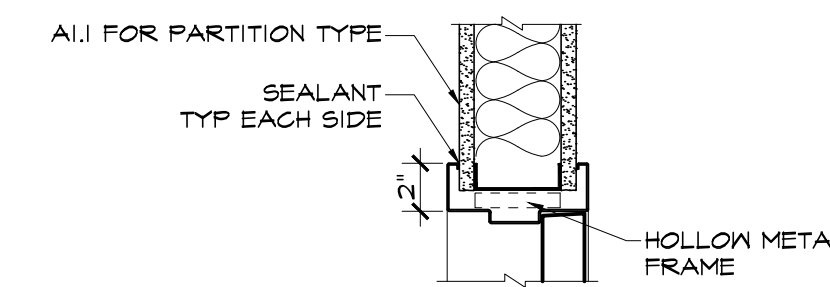
**6 D/T WINDOW
SYSTEM SILL DETAIL**
A2.1 SCALE: 1/2" = 1'-0"



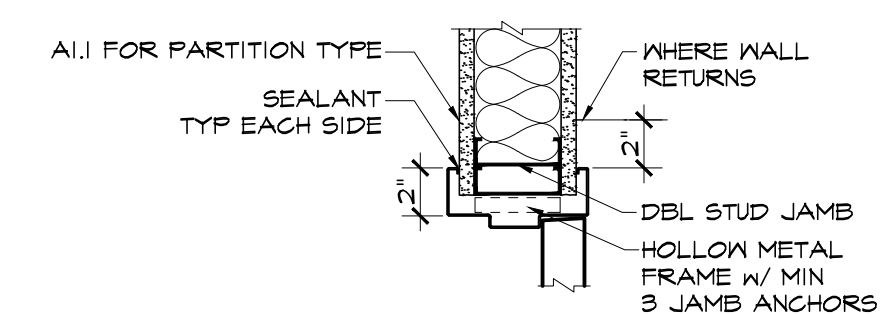
5 HEAD DETAIL
A2.1 SCALE: 1/2" = 1'-0"



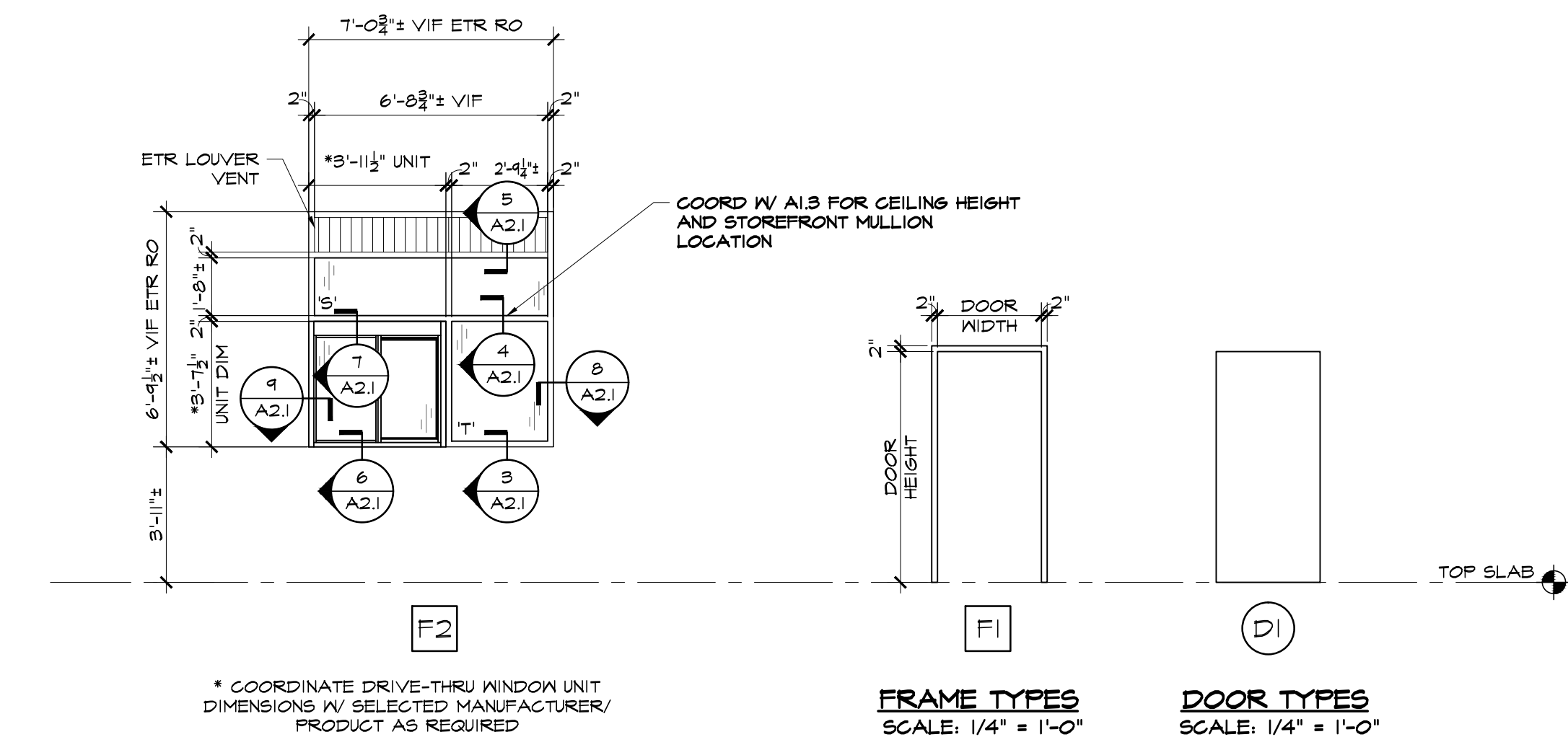
4 MULLION DETAIL
A2.1 SCALE: 1/2" = 1'-0"



2 HM HEAD DTL
A2.1 SCALE: 1/2" = 1'-0"



1 HM JAMB DTL
A2.1 SCALE: 1/2" = 1'-0"



FRAME TYPES SCALE: 1/4" = 1'-0"
DOOR TYPES SCALE: 1/4" = 1'-0"

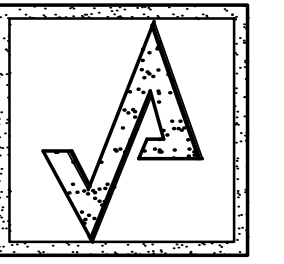
- DOOR & FRAME NOTES / SPECS**
- TEMPERED GLAZING REQUIRED AT ALL LOCATIONS WHERE INDICATED BY 'T'.
 - SFANDREL GLAZING REQUIRED AT ALL LOCATIONS WHERE INDICATED BY 'S'.
MANUF - OLDCASTLE BUILDING ENVELOPE.
COLOR - GREY BLACK CERAMIC FRIT SURFACE #4.
 - ALUM STOREFRONT SHALL MATCH EXISTING.
 - HM DOORS & FRAMES - STEELCRAFT OR APPROVED EQUAL.
- INTERIOR FRAME: 16 GAUGE SHOP PRIMED, REINFORCED TO RECEIVE SCREENS FOR HARDWARE.
 - INTERIOR WOOD DOORS: COMMERCIAL GRADE HEAVY DUTY WITH FIVE-PLY CONSTRUCTION, PARTICLEBOARD CORE, TYPE II GLUE BOND, SHOP PRIME MDF, PAINT GRADE VENEER, SIDE EDGES TO BE 1-1/8" TOP AND BOTTOM EDGES TO BE 2-1/2" MILL OPTION SPECIES; PREPARE FOR FIELD FINISH.
 - SEE A7.0 - A7.4 FOR MASTER FINISH SCHEDULES & NATIONAL ACCOUNTS.
 - DRIVE-THRU WINDOW: READY ACCESS 275 FULLY AUTOMATIC (OR QUIKSERV SS-4035E FULLY AUTOMATIC AS ALT - COORD DETAILS W/ MANUF); COLOR TO MATCH STOREFRONT.

HARDWARE SETS ALL HARDWARE SHALL BE ADA COMPLIANT WHETHER OR NOT SPECIFIED HEREIN

| | |
|-----------------|-------------------------------|
| SET P-1 | HASER BB 1214 26D |
| 3 HINGES | HASER 3440 WTN US26D |
| 1 PRIVACY SET | HASER 5200 MLT I-6 ALM |
| 1 CLOSER | HASER 2145 BLACK Ø" x 2" LKOD |
| 2 KICKPLATES | HASER 241F US26D |
| 1 FLOOR STOP | HASER 301D |
| 1 SET SILENCERS | |

DOOR SCHEDULE

| No | ROOM (FROM / TO) | DOOR | | | | FRAME | | | | HDW | REMARKS | | | | | |
|-----|---|------|-------|--------|--------|-------|-----------|--------|--------|-----|---------|----|-----------|-----|----|-----|
| | | TYPE | WIDTH | HEIGHT | THICK | TYPE | MAT | FINISH | SET | | | | | | | |
| 100 | SHARED SALES AREA / ACCESSIBLE RESTROOM | D1 | 3'-0" | 6'-8" | 1 3/4" | WOOD | PT-02 (W) | 2/A2.1 | 1/A2.1 | - | F1 | HM | PT-02 (W) | P-1 | No | 100 |



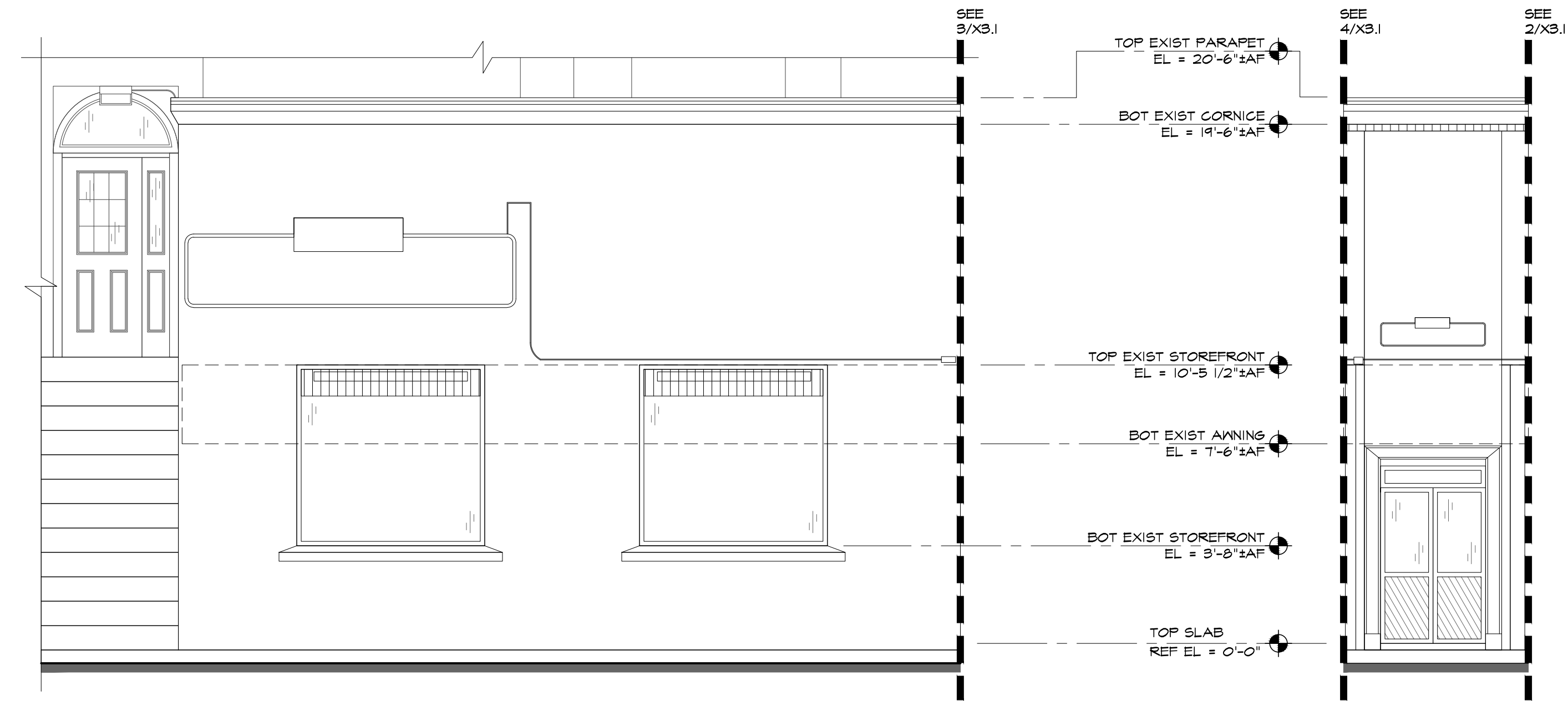
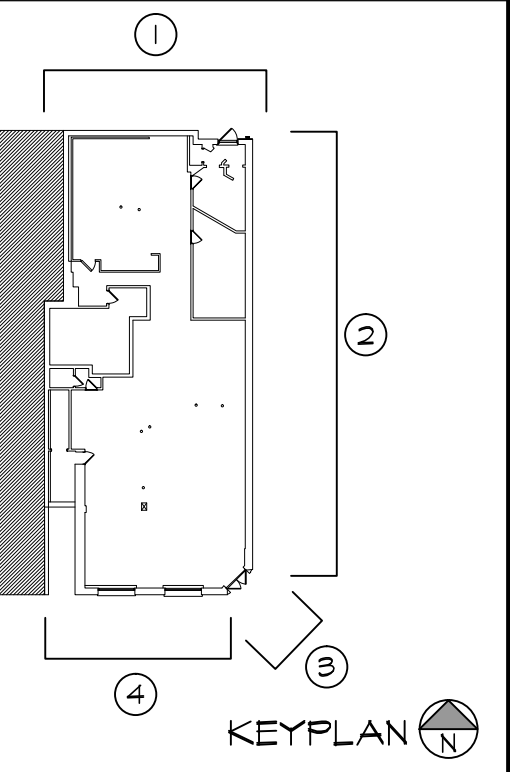
**AHARONIAN
& ASSOCIATES INC.
ARCHITECTS**

310 George Washington Highway
Suite 100
Smithfield, Rhode Island
0 2 9 1 7

T 401-232-5010
F 401-232-5080
WWW.ARCH-ENG.COM

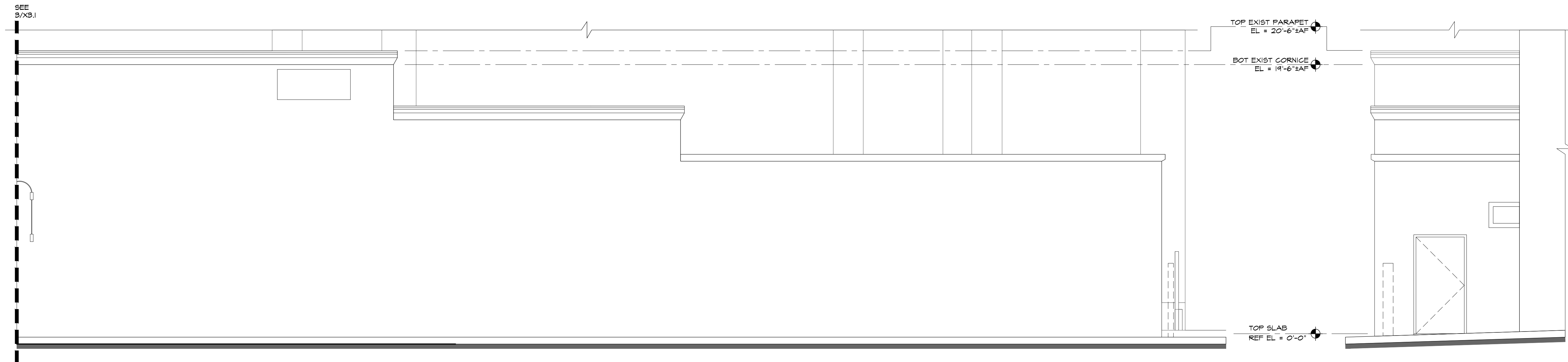
DISCLAIMER

OWNERSHIP AND USE OF DOCUMENTS, DRAWINGS AND SPECIFICATIONS ARE INSTRUMENTS OF PROFESSIONAL SERVICE AND SHALL REMAIN THE PROPERTY OF THE ARCHITECT. THESE DOCUMENTS ARE NOT TO BE USED, IN WHOLE OR IN PART, FOR ANY OTHER PROJECTS OR PURPOSES OR BY ANY OTHER PARTIES THAN THOSE PROPERLY AUTHORIZED BY CONTRACT WITHOUT THE EXPRESS WRITTEN AUTHORIZATION OF THE ARCHITECT.



4 EXISTING SOUTH ELEVATION
SCALE: 1/4" = 1'-0"

3 EXISTING SOUTHEAST ELEV
SCALE: 1/4" = 1'-0"



2 EXISTING EAST ELEVATION
SCALE: 1/4" = 1'-0"

1 EXISTING NORTH ELEVATION
SCALE: 1/4" = 1'-0"

| REVISIONS | | |
|-----------|---------|------|
| NUMBER | REMARKS | DATE |
| | | |
| | | |
| | | |
| | | |
| | | |

AS-BUILT

PROJECT TITLE

1912 BEACON STREET
BRIGHTON, MA 02135
SUFFOLK COUNTY

DRAWING TITLE
**EXISTING EXTERIOR
ELEVATIONS**

| | |
|-----------------------|-------------------|
| DATE JULY 01, 2021 | PROJ NO 21062 |
| DRAWN BY KL | CHECKED BY ERM |

DRAWING NUMBER
X3.1