

**SIGNAGE KEY:**

- ① AWNING WITH HOTEL NAME
- ② RESTAURANT NAME WINDOW DECAL
- ③ BHH LOGO WINDOW DECAL
- ④ NEW WALL SIGN
- ⑤ NEW BLADE SIGN
- ⑥ FRONT DOOR DECAL
- ⑦ FIRE DEPT CONNECTION SIGN
- ⑧ BRANCH ST DOOR SIGN
- ⑨ CHESTNUT ST DOOR DECAL

**EXTERIOR IMPROVEMENTS:**

- ① REPAINT WINDOW FRAMES - BLACK TO MATCH EXISTING
- ② REPLACE AWNINGS, COLOR TO MATCH EXISTING GREEN, TYPICAL OF (3) ON CHARLES ST
- ③ REPAIR CORNER BEAD AND PATCH STUCCO FINISH TO MATCH EXISTING



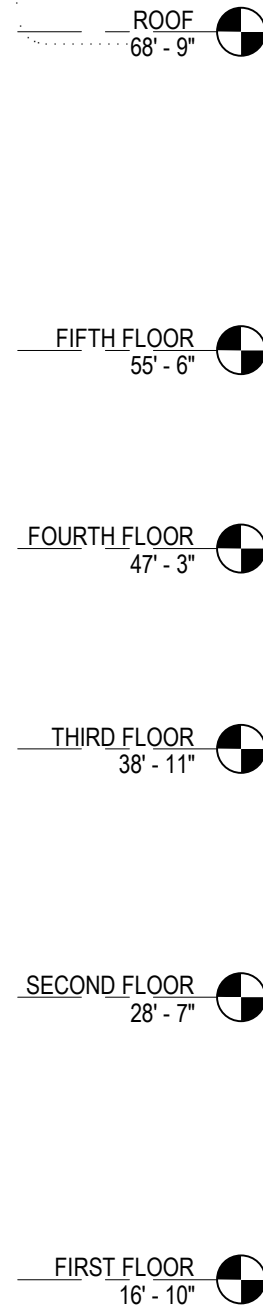
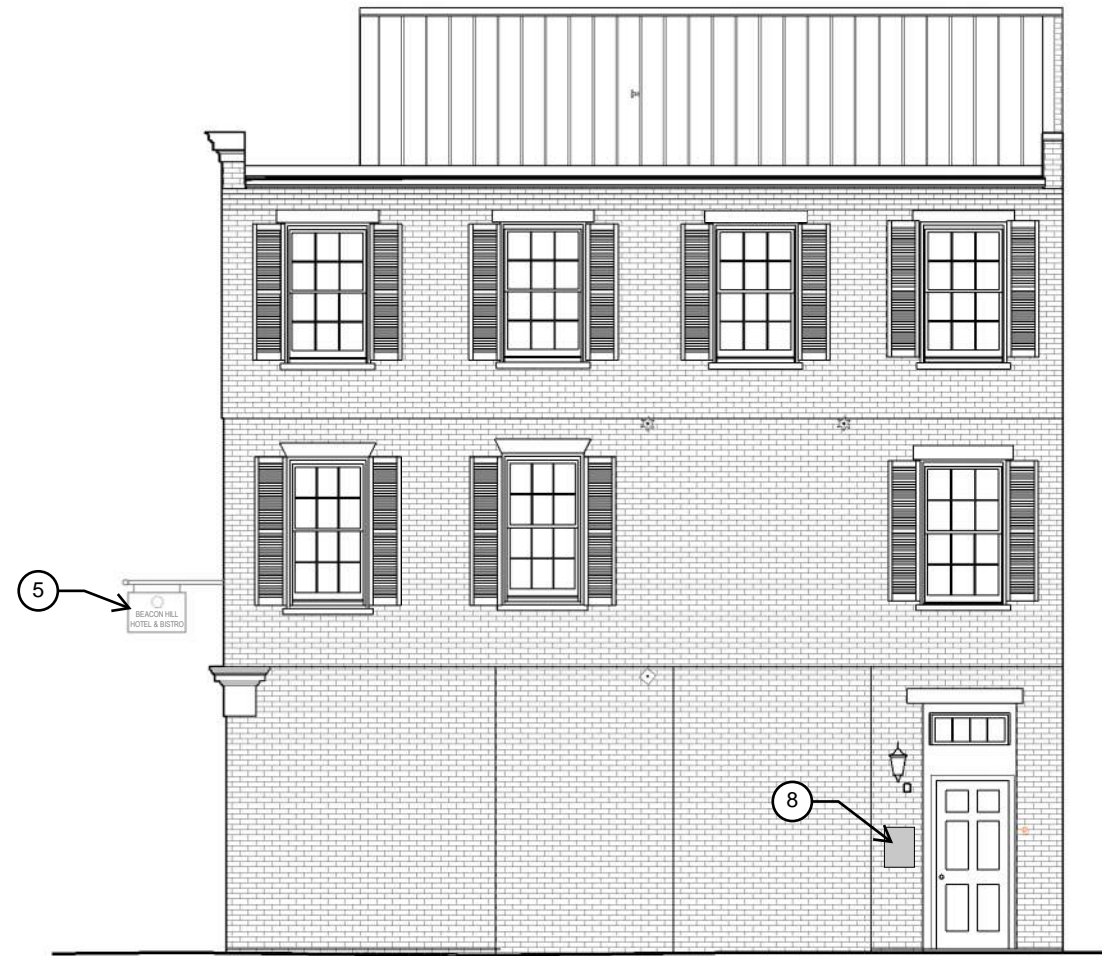
**1** Charles St Elevation - Signage Locations  
1/8" = 1'-0"

**SIGNAGE KEY:**

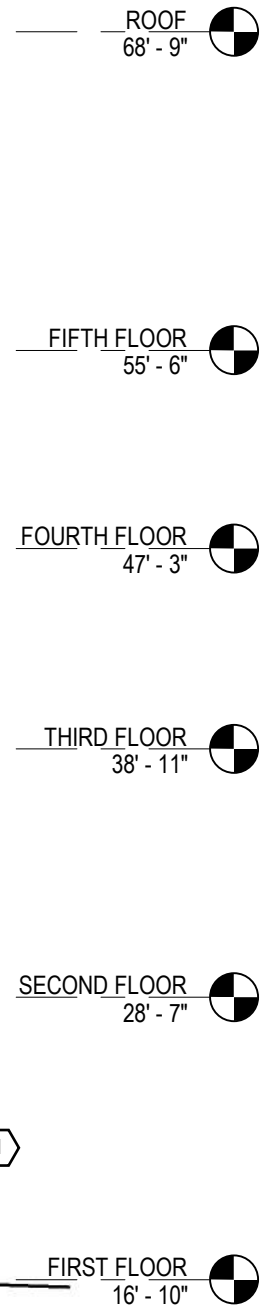
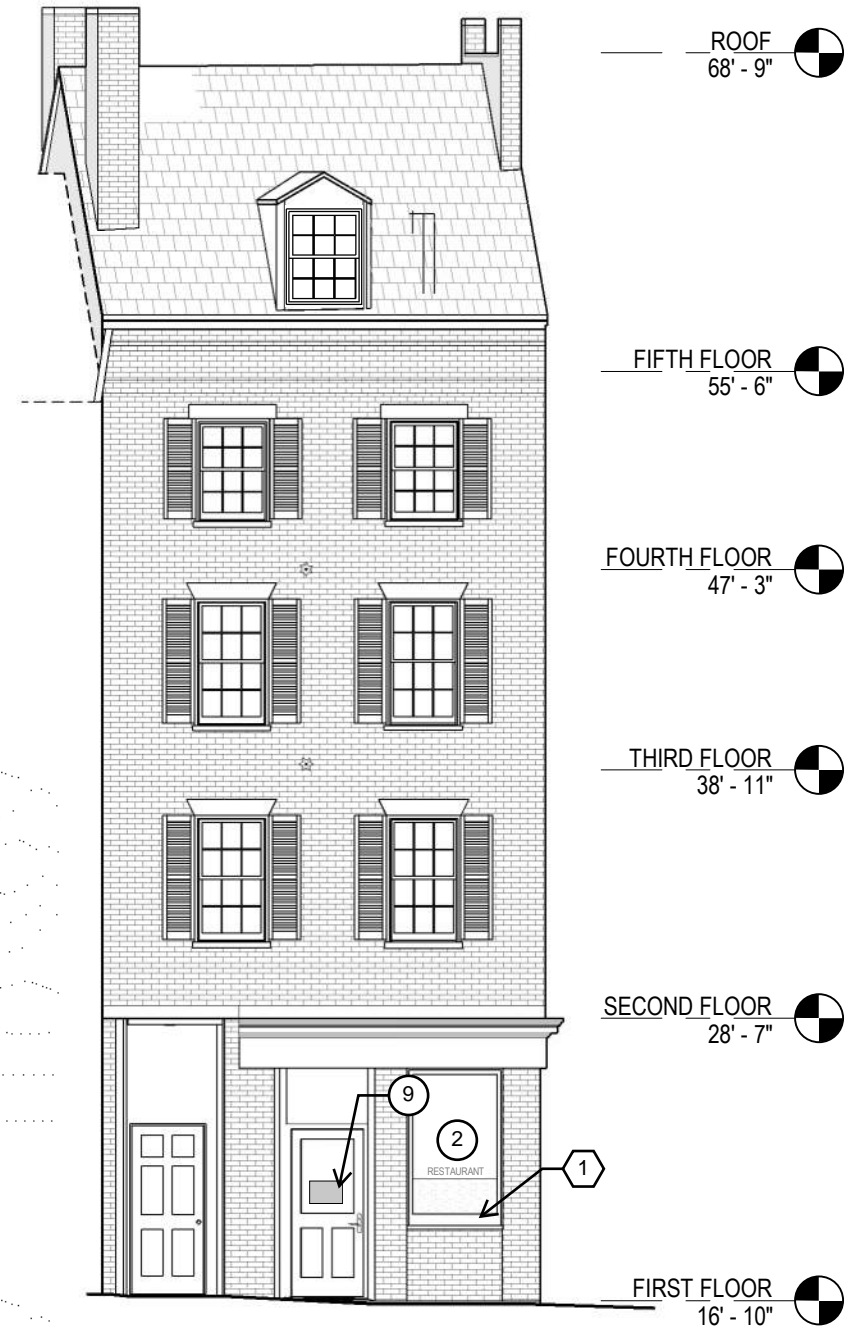
- ① AWNING WITH HOTEL NAME
- ② RESTAURANT NAME WINDOW DECAL
- ③ BHH LOGO WINDOW DECAL
- ④ NEW WALL SIGN
- ⑤ NEW BLADE SIGN
- ⑥ FRONT DOOR DECAL
- ⑦ FIRE DEPT CONNECTION SIGN
- ⑧ BRANCH ST DOOR SIGN
- ⑨ CHESTNUT ST DOOR DECAL

**EXTERIOR IMPROVEMENTS:**

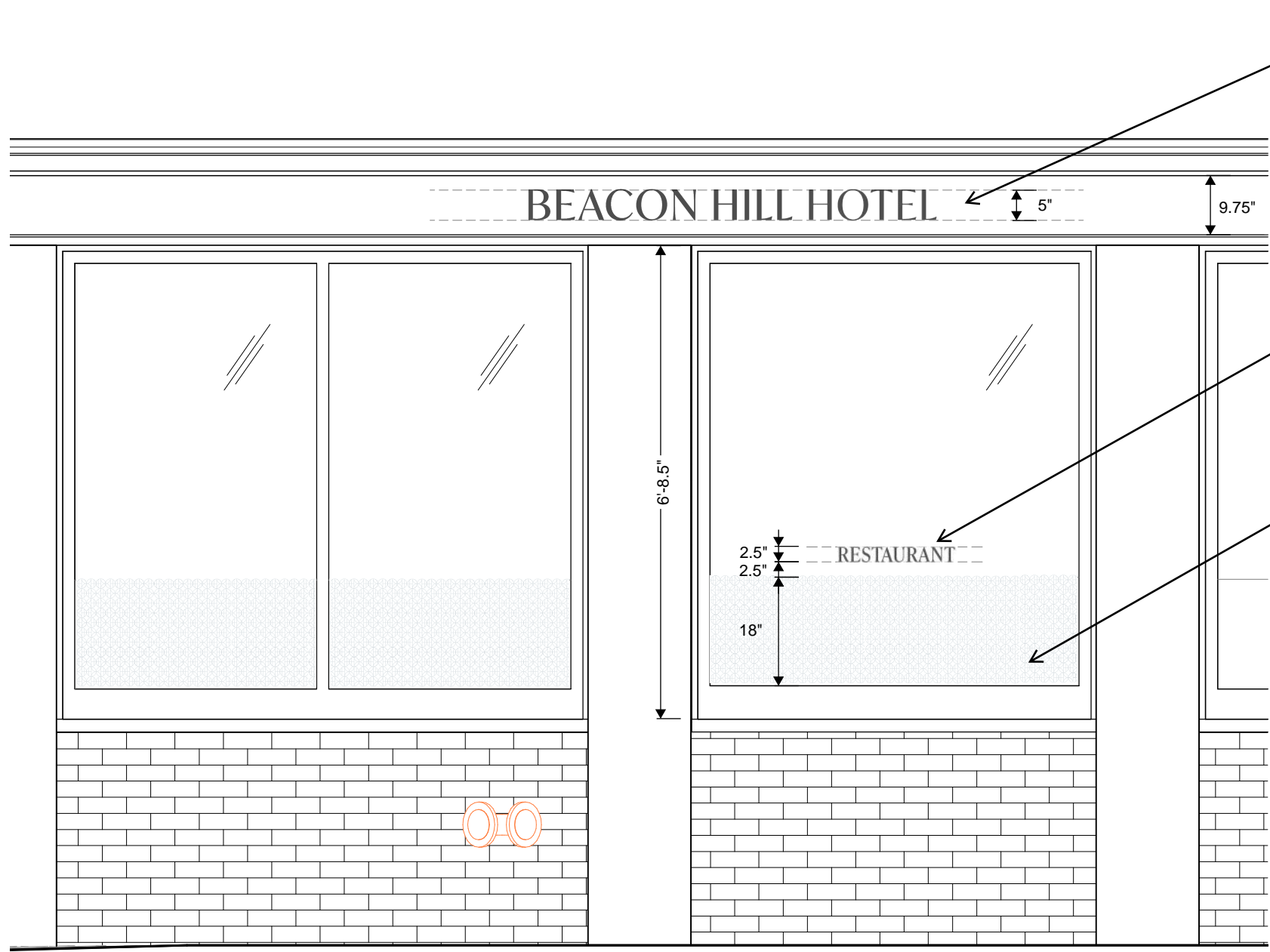
- ① REPAINT WINDOW FRAMES - BLACK TO MATCH EXISTING
- ② REPLACE AWNINGS, COLOR TO MATCH EXISTING GREEN, TYPICAL OF (3) ON CHARLES ST
- ③ REPAIR CORNER BEAD AND PATCH STUCCO FINISH TO MATCH EXISTING



**1** Branch St Elevation - Signage Locations  
1/8" = 1'-0"



**2** Chestnut St Elevation - Signage Locations  
1/8" = 1'-0"



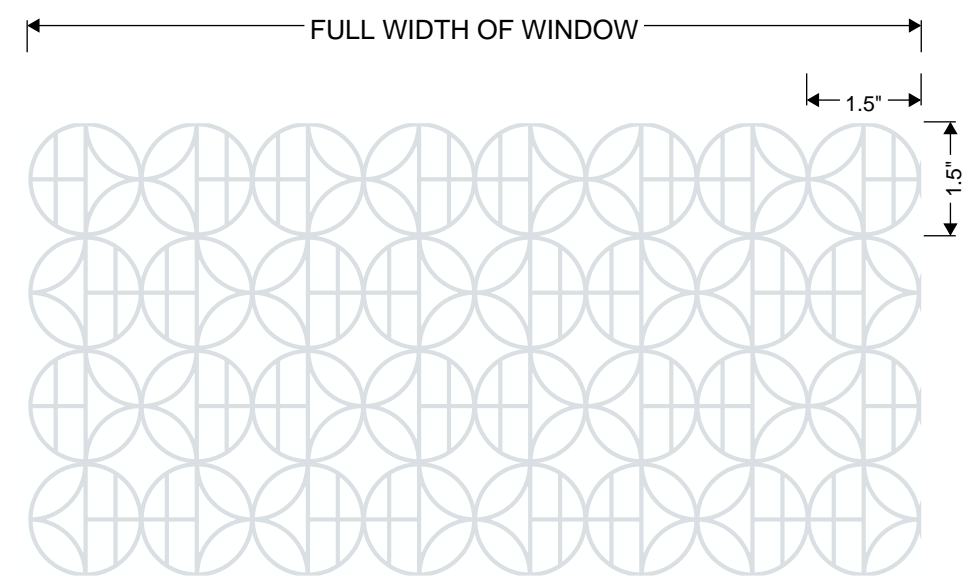
① New awnings, color to match existing green. Hotel name centered on each awning in white font

② 2.5"H White font decal with Restaurant name applied to inside face of glass

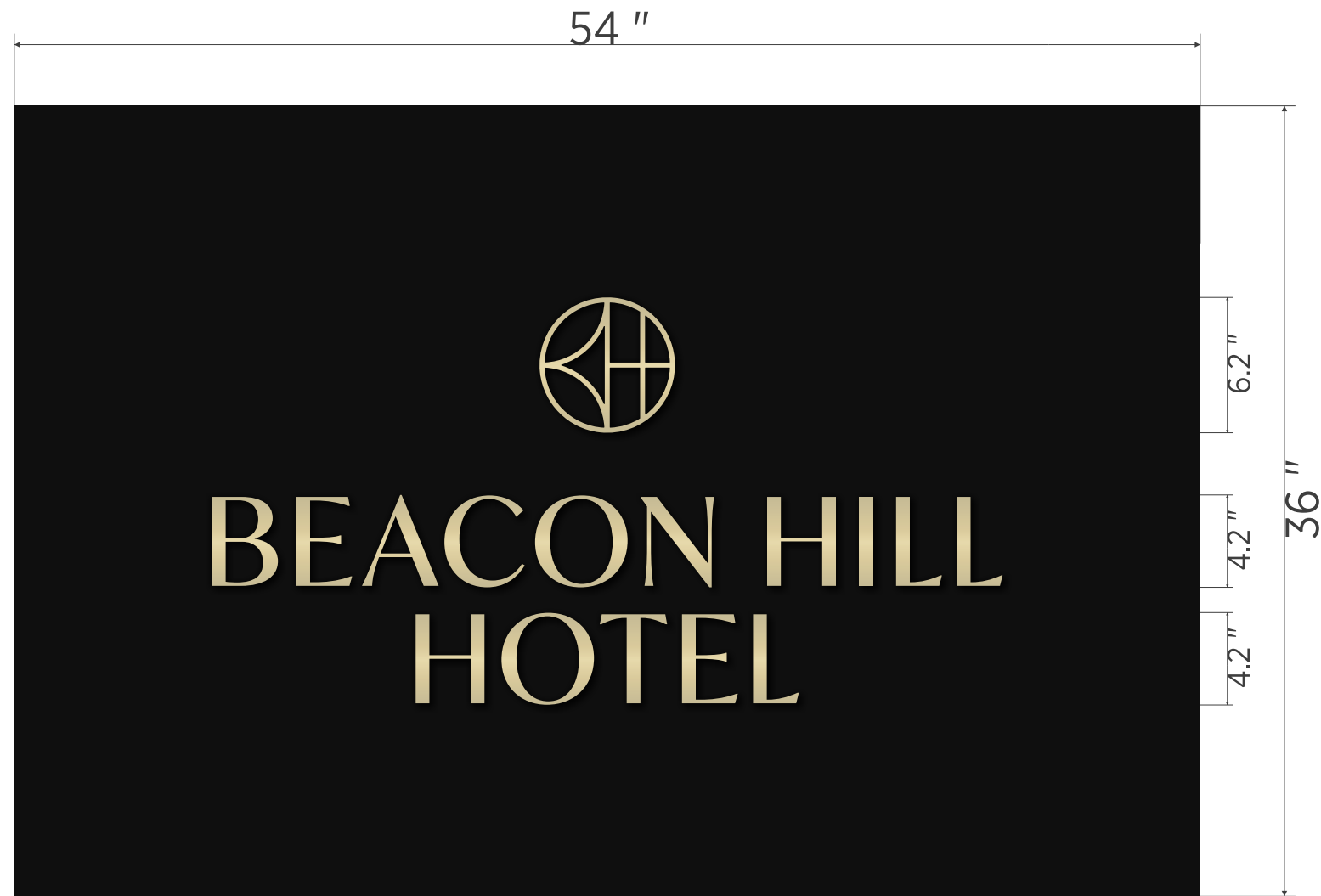
③ 18"H White graphic decal with Hotel logo applied to inside face of glass (Refer to detail below)



EXISTING CONDITION



**1** TYP CHARLES ST FACADE ELEVATION  
1/2" = 1'-0"



METAL PLAQUE PAINTED MATTE BLACK  
 RAISED LOGO AND COPY, BRUSHED BRASS LOGO AND COPY  
 SIGN WILL REPLACE EXISTING IN LOCATION AND SIZE  
 CONCEALED MOUNTING HARDWARE



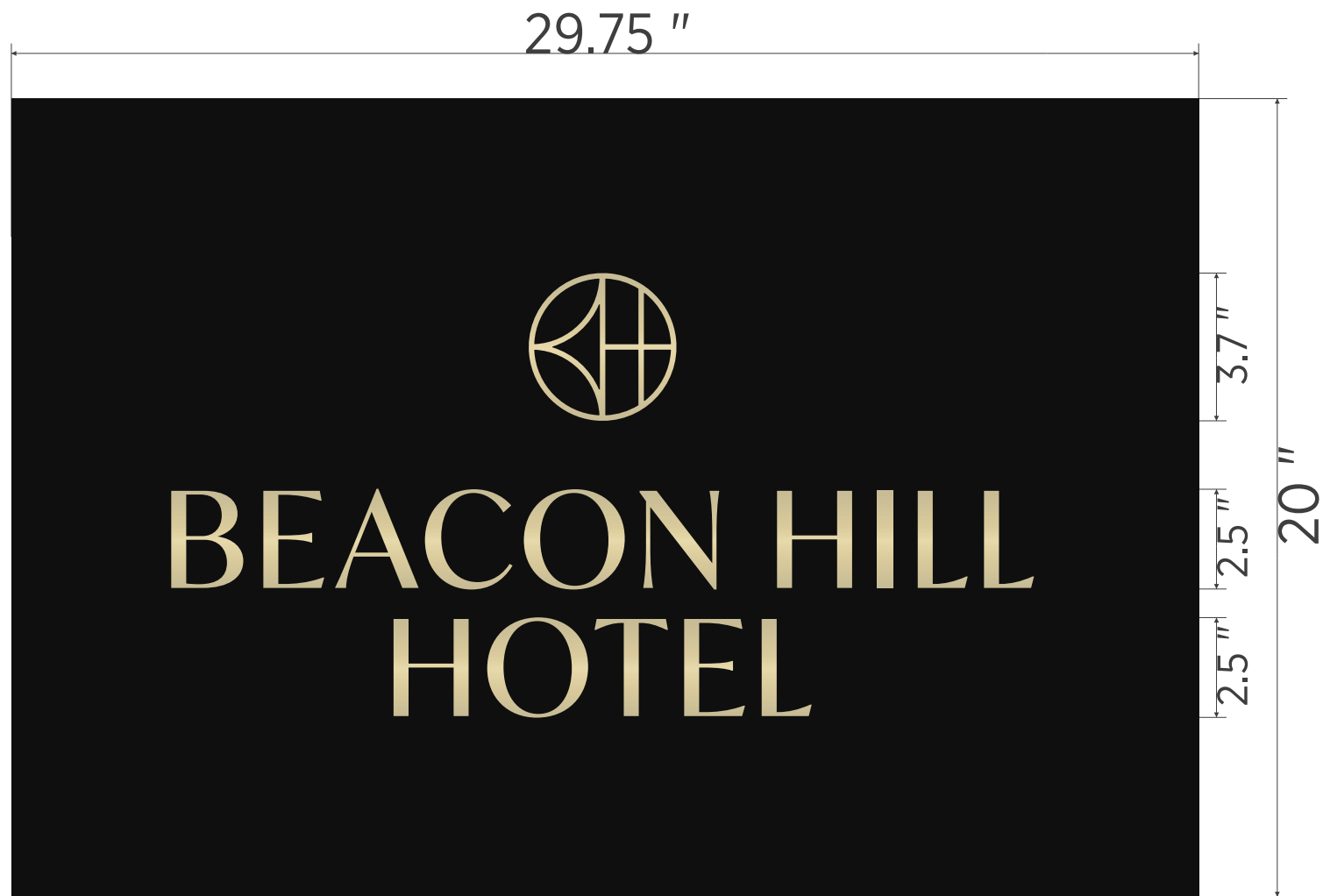
EXISTING SIGN



PROPOSED SIGN

170 LORUM ST ■ TEWKSBURY ■ MA 01876 ■ 978.851.2424 ■ METROSIGN.NET





DOUBLE SIDED METAL HANGING SIGN PAINTED MATTE BLACK  
 RAISED LOGO AND COPY BRUSHED BRASS FINISH  
 SIGN WILL REPLACE EXISTING IN LOCATION AND WIDTH  
 HEIGHT OF NEW SIGN IS SHORTER THAN EXISTING  
 EXISTING BRACKET WILL BE RE-USED



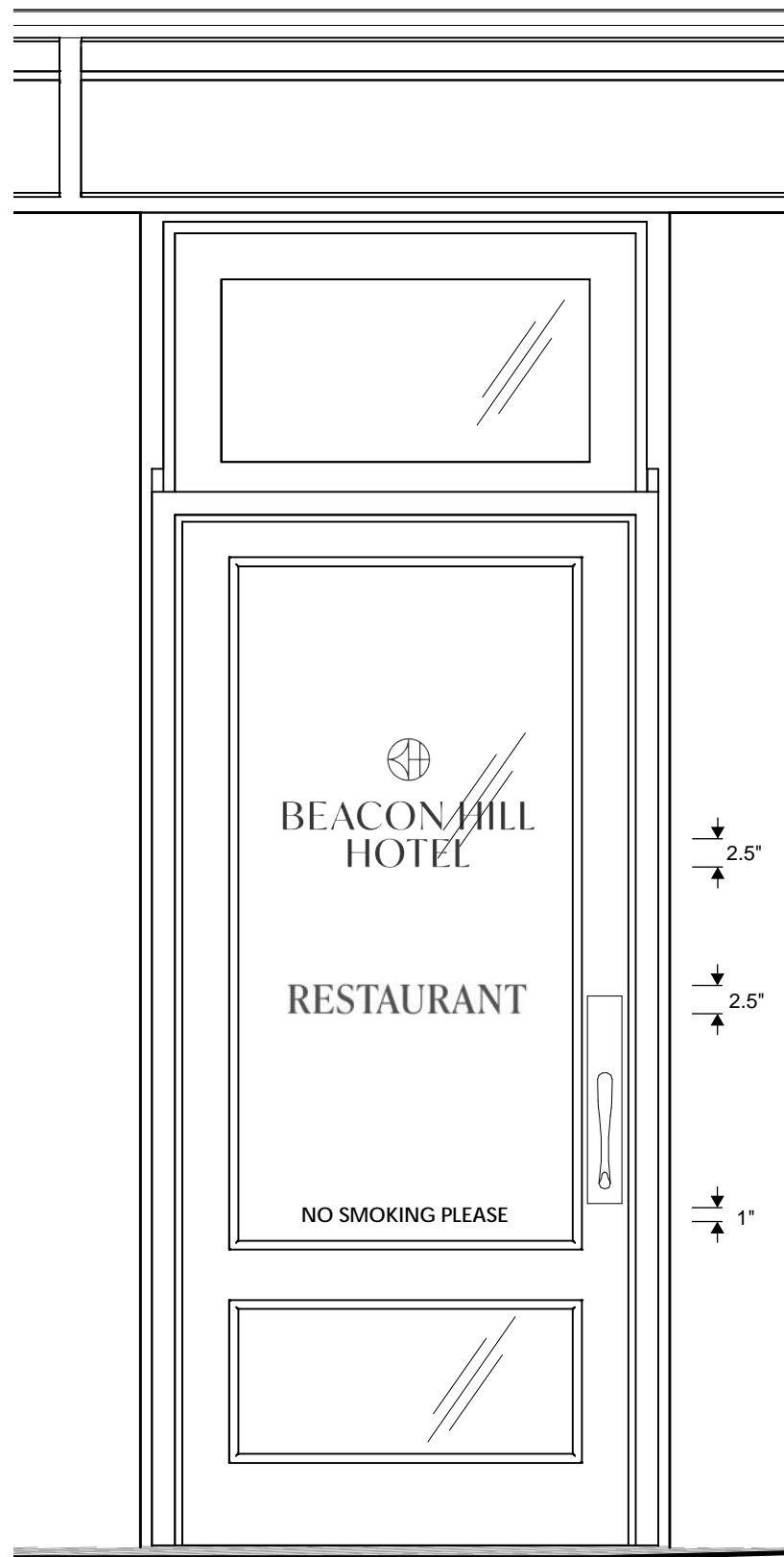
EXISTING SIGN



PROPOSED SIGN

170 LORUM ST ■ TEWKSBURY ■ MA 01876 ■ 978.851.2424 ■ METROSIGN.NET





6 White Font Decal with Hotel Name & Logo, Restaurant Name applied to inside face of glass.



EXISTING DOOR

1 RESTAURANT DOOR ELEVATION



7

**Fire Department Connection**

.080" thick White aluminum panel with direct print Red graphics. Panel mounts to exterior bldg. wall with mechanical fasteners.

**NOTE: BOSTON FIRE DEPARTMENT REQUIREMENT**



EXISTING CONDITION



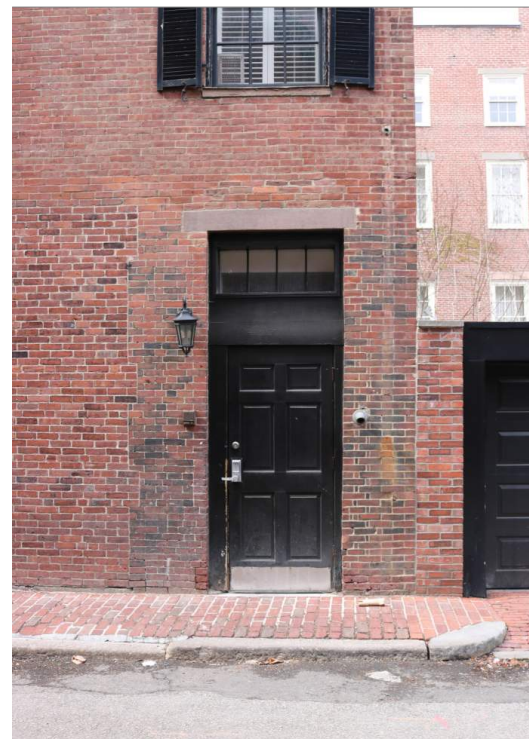
ENTRY DOOR ELEVATION

170 LORUM ST ■ TEWKSBURY ■ MA 01876 ■ 978.851.2424 ■ METROSIGN.NET

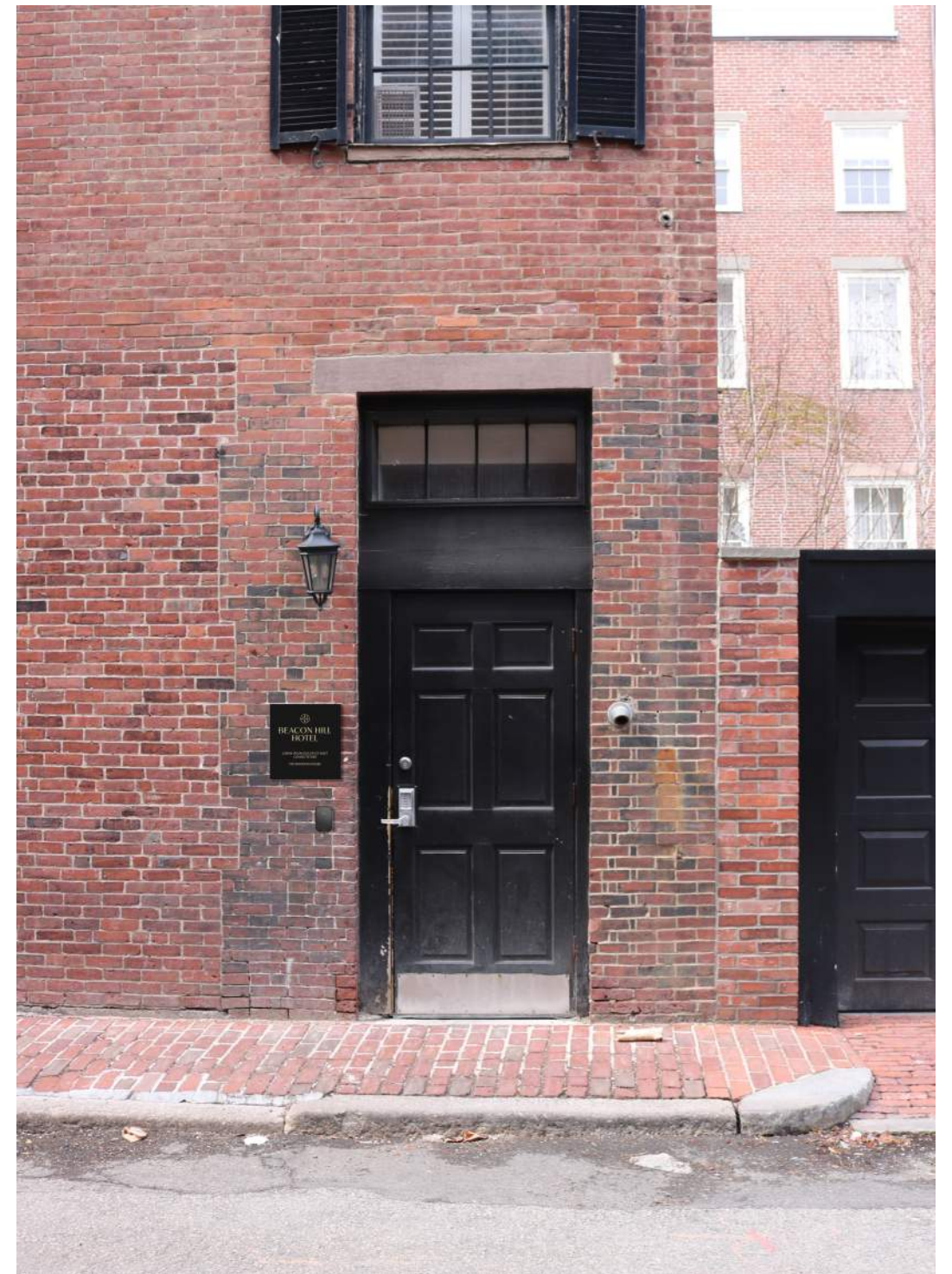




METAL PLAQUE PAINTED MATTE BLACK  
 RAISED LOGO AND COPY, BRUSHED BRASS LOGO AND COPY  
 CONCEALED MOUNTING HARDWARE

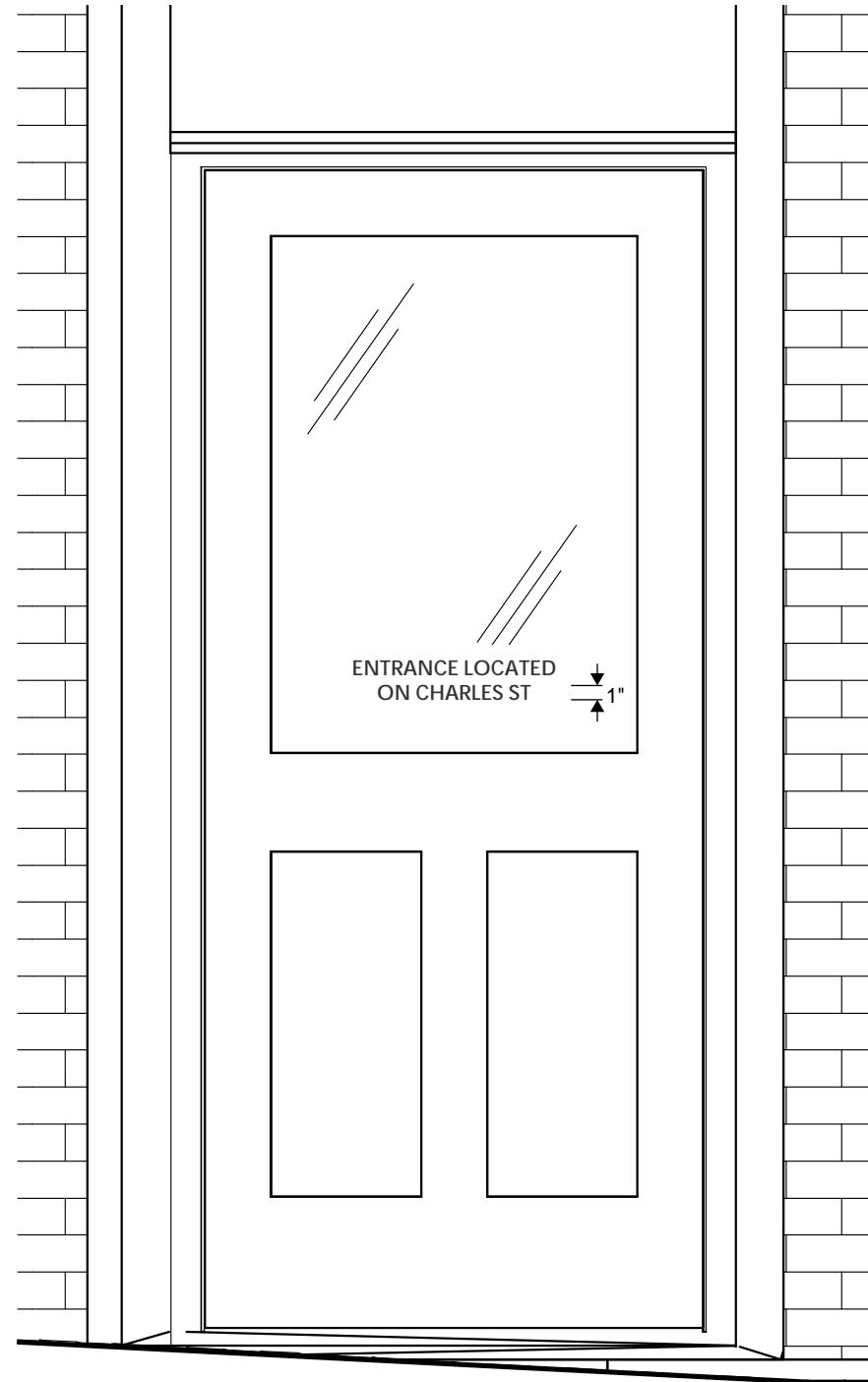


EXISTING DOOR



PROPOSED DOOR





9 White Font Decal applied to inside face of glass



EXISTING DOOR

1 CHESTNUT ST DOOR ELEVATION