











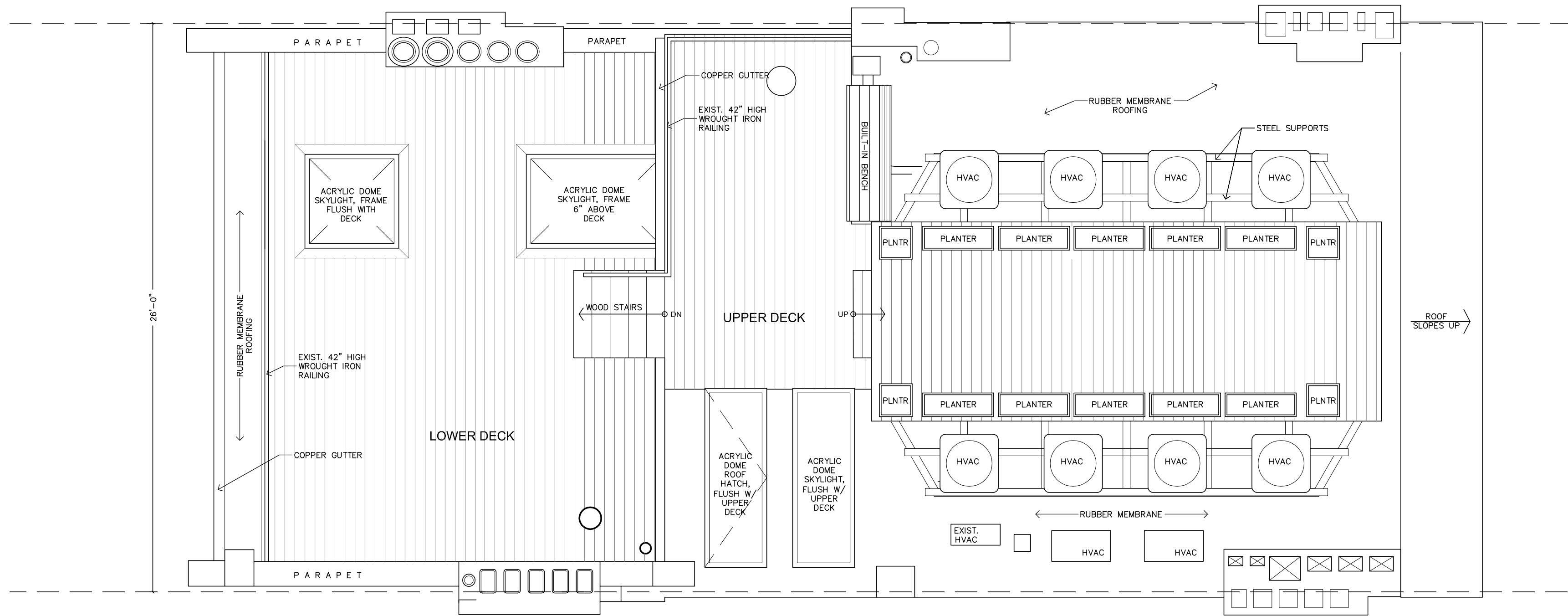
184 MARLBOROUGH ST. #7  
NEW HEAD HOUSE AND  
IMPROVEMENTS  
TO EXISTING ROOF DECK

184 MARLBOROUGH ST  
UNIT 7

BOSTON  
MASSACHUSETTS

SCHEMATIC DESIGN: 5.4.22

A-1



1 EXISTING ROOF PLAN  
1/4" = 1'-0"

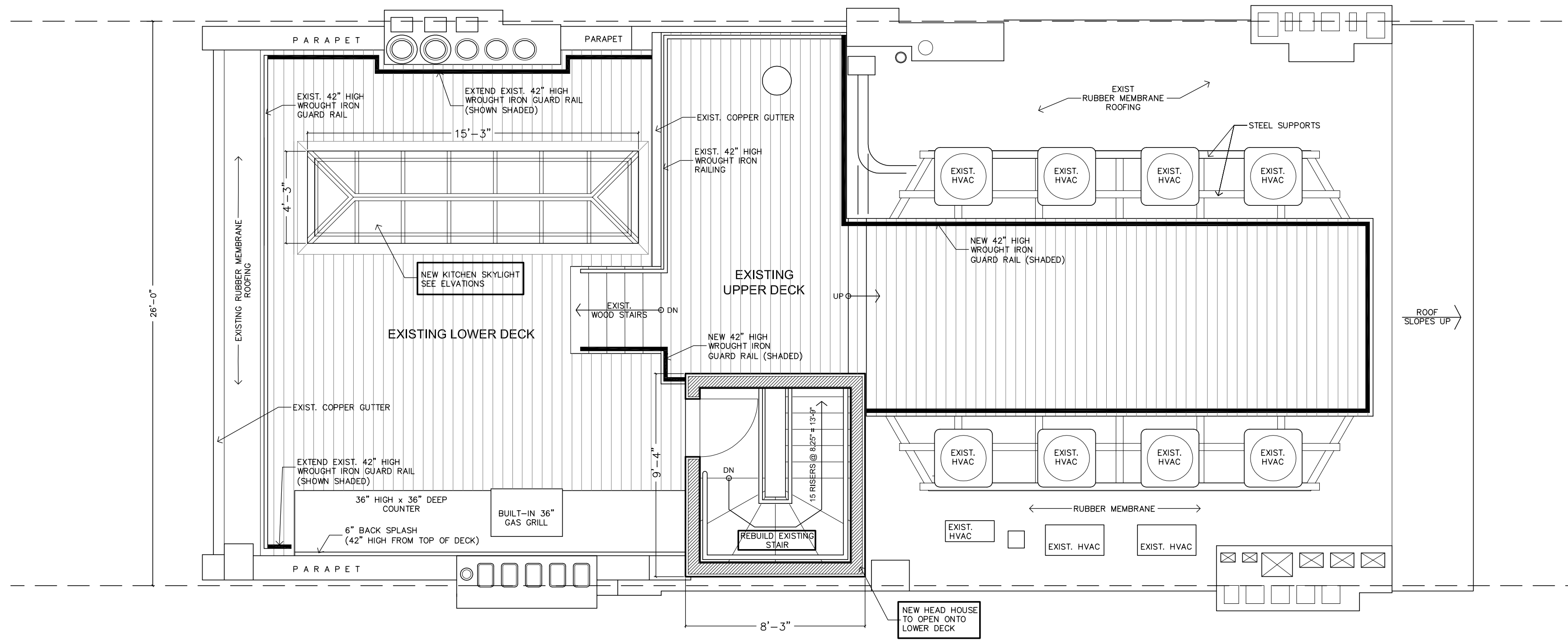
184 MARLBOROUGH ST. #7  
NEW HEAD HOUSE AND  
IMPROVEMENTS  
TO EXISTING ROOF DECK

184 MARLBOROUGH ST  
UNIT 7

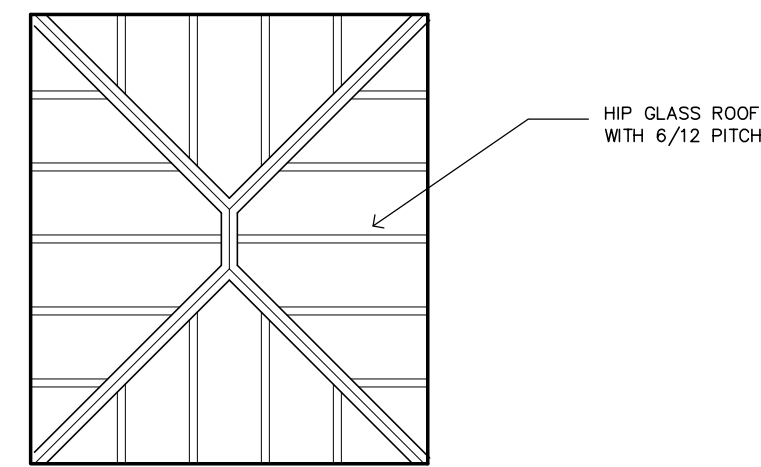
BOSTON  
MASSACHUSETTS

SCHEMATIC DESIGN: 5.4.22

A-2



1 PROPOSED ROOF PLAN  
1/4" = 1'-0"



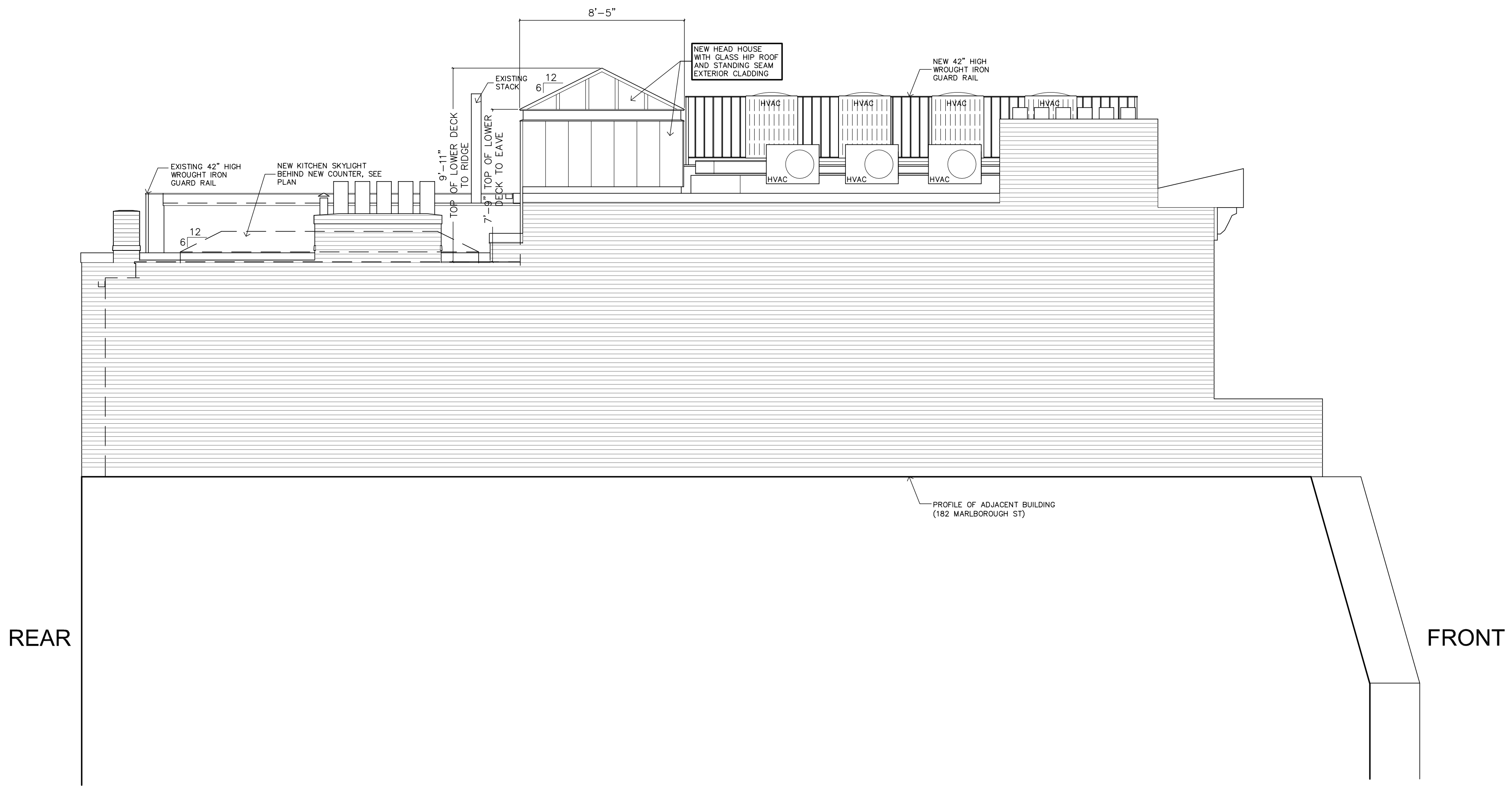
A PROPOSED HEAD HOUSE ROOF PLAN  
1/4" = 1'-0"

184 MARLBOROUGH ST. #7  
NEW HEAD HOUSE AND  
IMPROVEMENTS  
TO EXISTING ROOF DECK

184 MARLBOROUGH ST  
UNIT 7  
BOSTON  
MASSACHUSETTS

SCHEMATIC DESIGN: 5.4.22

A-3



REAR

FRONT

1 SIDE ELEVATION  
1/4" = 1'-0"



184 MARLBOROUGH ST. #7  
NEW HEAD HOUSE AND  
IMPROVEMENTS  
TO EXISTING ROOF DECK

184 MARLBOROUGH ST  
UNIT 7  
BOSTON  
MASSACHUSETTS  
SCHEMATIC DESIGN: 5.4.22



182

184

186

1 FRONT ELEVATION  
3/16" = 1'-0"

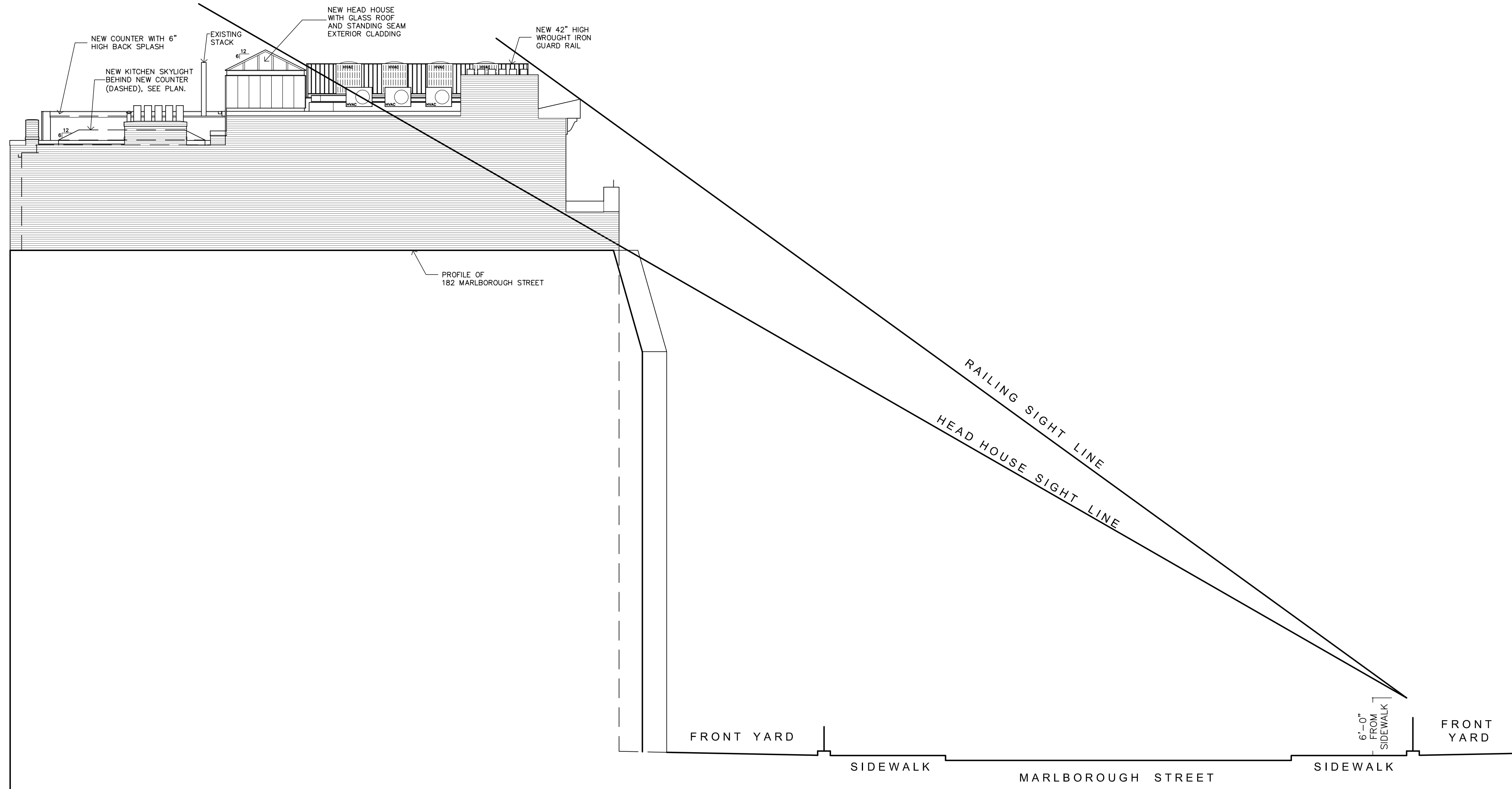
A-4

184 MARLBOROUGH ST. #7  
NEW HEAD HOUSE AND  
IMPROVEMENTS  
TO EXISTING ROOF DECK

184 MARLBOROUGH ST  
UNIT 7  
BOSTON  
MASSACHUSETTS

SCHEMATIC DESIGN: 5.4.22

A-5



1 SIGHT LINE SECTION  
1/8" = 1'-0"