

CRITE PARK ART and PLANTINGS

Additional Material

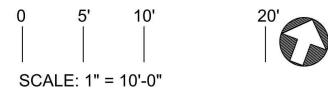
Crite Park Project

At intersection of Columbus Avenue and West Canton Street

Index

Page 2	Conceptual Plan View
Page 3	Conceptual Perspective (1)
Page 4	Conceptual Perspective (2)
Page 5	Conceptual Perspective (3)
Page 6	Tree Removal Plan
Page 7	Tree Addition Plan
Page 8	New Plantings Pallet
Page 9	Mosaic Installation Location
Page 10	Approximate Mosaic Dimensions on Wall
Page 11	Mosaic Installation Details

Conceptual Plan View



CRITE PARK - Illustrative Concept Plan
 Friends of Crite Park
 April 27, 2022



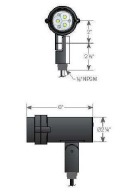
7 Wire cut brick paving (proposed colors)
 Dark Accent (dark banding)
 Cocoa or Rose (herringbone field)

LEGEND

- 1 Metal Pergola with Integrated Light Fixtures + GFCI Outlets
- 2 Table Seating (One accessible table with 3 seats, one 4 seat table)
- 3 Conversational Seating Area
- 4 Metal Picket Fence on Granite Curb - 30" height (including curb)
- 5 Metal Landscape Fence - 18" total height
- 6 Art Mural (mounted to building facade - approx. 9' width, 6' height)
- 7 New Wire Cut Brick Paving - with decorative banding
- 8 Existing Light Fixture (to remain)
- 9 Existing Tree (to remain)
- 10 New Tree
- 11 Freestanding Planter
- 12 Landscape Planting Area
- 13 Trash Receptacle (to be coordinated with Boston Parks + Rec. Dept.)



1 Pergola canopy (painted metal)



1 Pergola-mounted site lighting, 10W LED, 2700K color temperature (warm white)



2 Accessible Table - (laser cut checkerboard pattern on 2 tables)



3 Armchairs (length varies, 30-48", and Side Table (grey powdercoat finish)



4 Metal Picket Fence on Granite Curb, 30" height



5 Metal Landscape Fence on Granite Curb-18" height



7 Wire cut brick paving - precedent image of rotated overlapping squares and banded edges



5 Freestanding powdercoated metal planter 6' length x 3' width x 2.5' height Dark grey finish





CRITE PARK - PERSPECTIVE FROM COLUMBUS AVENUE
Revised 04/27/2022





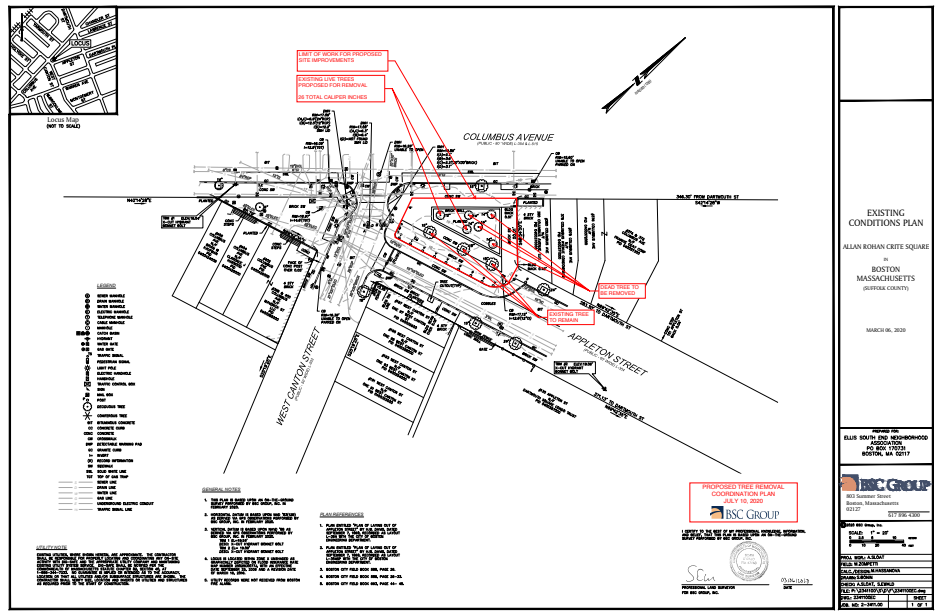
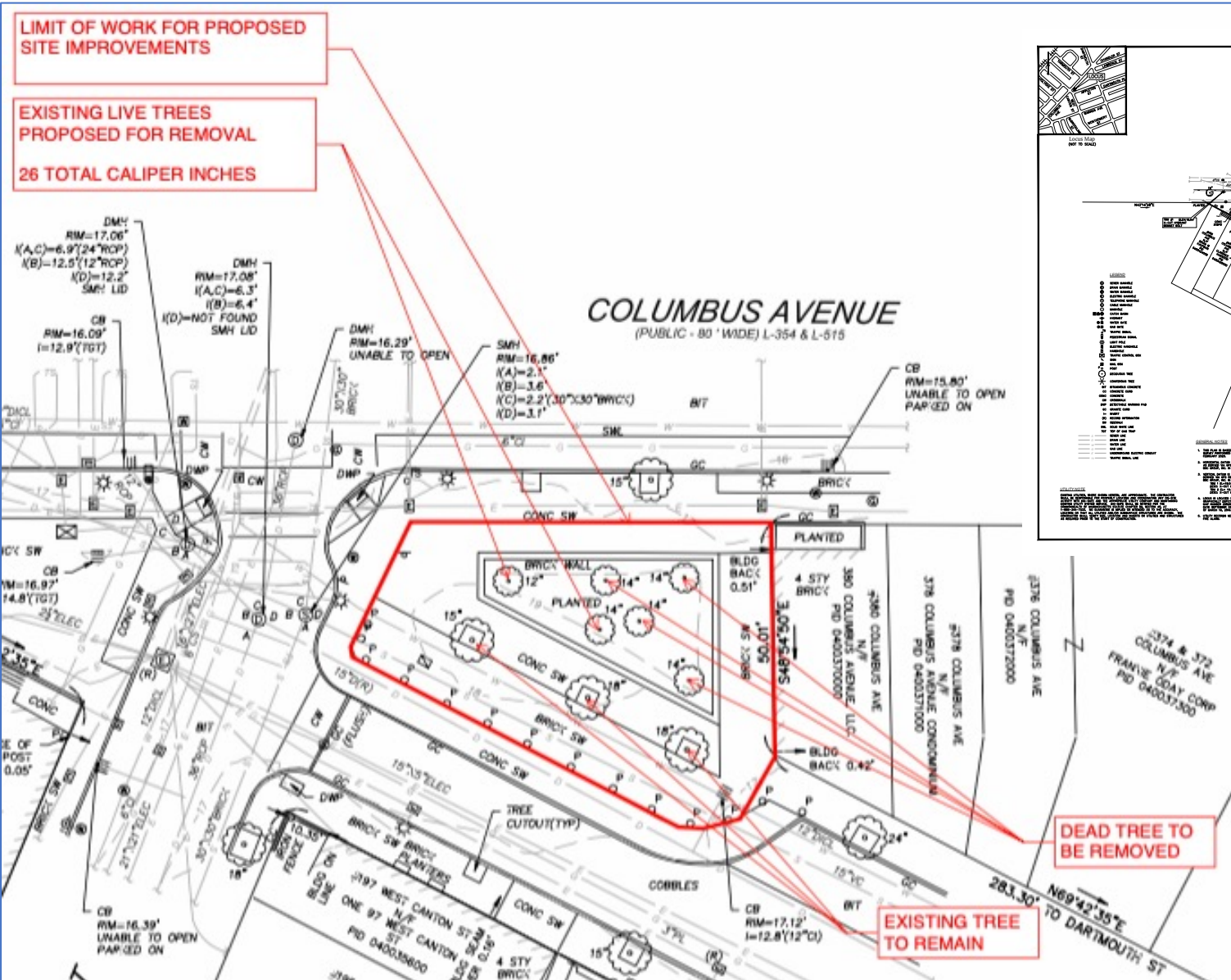
CRITE PARK - PERSPECTIVE FROM APPLETON STREET
Revised 04/27/2022





CRITE PARK - PERSPECTIVE FROM WEST CANTON STREET
Revised 04/27/2022





Tree Addition Plan



LEGEND

KEY	QTY	DESCRIPTION
EX		Existing Tree to Remain
GT	3	<i>Gleditsia triacanthos var Inermis</i> Sunburst Honeylocust Thornless, podless Installation Size - 4" caliper, 12-18' overall height Mature Size - 40-50' height

CRITE PARK - Proposed Tree Planting Plan
 Friends of Crite Park
 April 27, 2022



SHADE TREES



Gleditsia triacanthos var Inermis
Sunburst Honeylocust
- thornless, podless
- 40-50' height

FREESTANDING PLANTER MATERIAL



Cornus alba Ivory Halo
Variegated Dogwood
- 3-4' height (maintain no taller than 4')



Anemone canadensis
Canadian Anemone
- 1-2' height

FLOWERING SHRUBS



Hydrangea quercifolia Pee Wee
Dwarf Pee Wee Oakleaf Hydrangea
- 3-4' height



Rosa x Radsunny
Sunny Yellow Knockout Rose
- 3-4' height

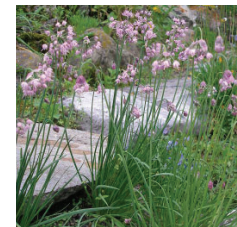
GROUNDCOVERS, PERENNIALS + ORNAMENTAL BULBS



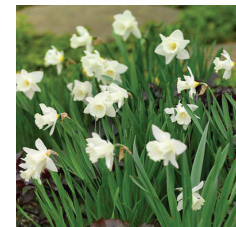
Rhus aromatica Gro Low
Gro Low Fragrant Sumac
- 2-3' height



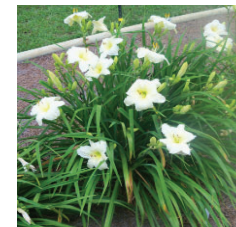
Allium stipitatum White Giant
White Giant Allium
- 3-4' height



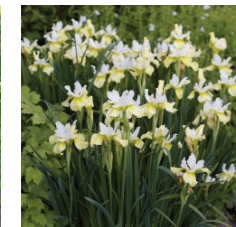
Allium cernuum
Nodding Onion
- clumping
- 12-18" height



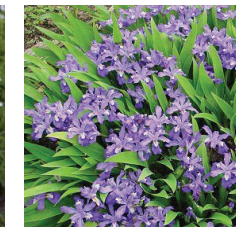
Narcissus Mount Hood
White Trumpet Daffodil
- clumping
- 12-18" height



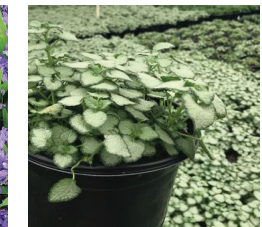
Hemerocallis Joan Senior
Reblooming White Daylily
- clumping
- 18-24" height



Iris siberica Butter and Sugar
White Siberian Iris
- clumping
- 24-30" height



Iris Cristata
Dwarf Crested Iris
- spreading
- 3-6" height



Lamium White Nancy
White Spotted Deadnettle
- spreading
- 6" height

Plant Palette

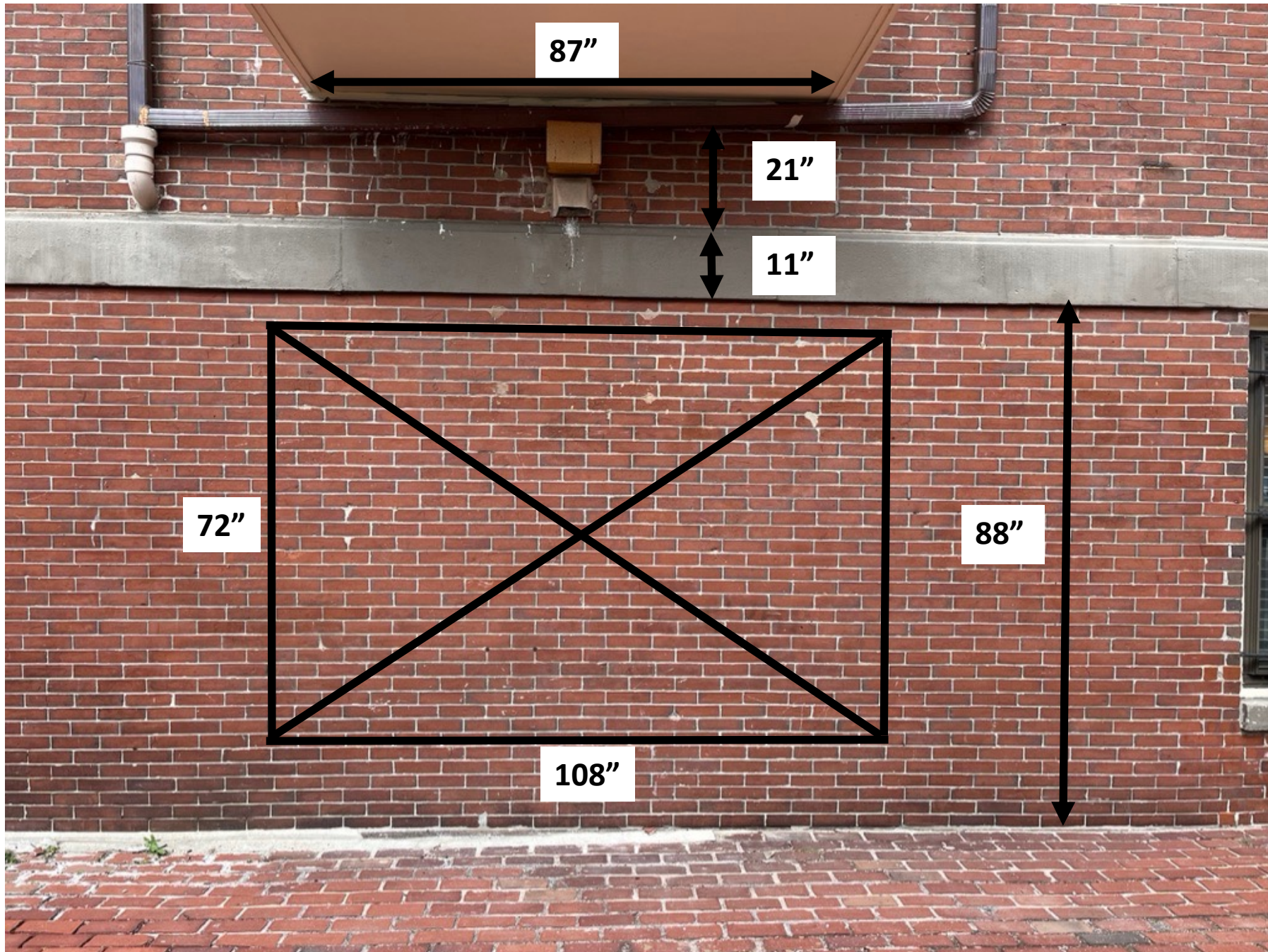
Crite Park

Friends of Crite Park
Revised 04/28/2022

Approx. mosaic location on 380 Columbus Ave. condominium wall.



Similar art mosaic installation on TD Bank in South Boston



How will the mosaic will be installed?

1. The existing brick and mortar joints are first cleaned free of any contaminates including dirt, grime, or Algae.
2. The installation area will be repointed; Loose bricks or mortar joints will be removed and repaired.
3. A coat of Laticrete 3701 Lite Mortar will be applied to prep/parge the existing walls.
4. Once the Laticrete 3701 has cured, Laticrete Hydro Ban waterproofing and anti-fracture membrane will be applied to the surface. This material will prevent water from getting into the mortar bed and causing freezing/thawing issues over the winter.
5. The mosaic tiles will be installed onto a thinset of Laticrete 254 Platinum, per manufacturer's recommendations.
6. Finally, Permacolor grout will be installed onto the joints between the tiles to assure that the joints are full.

Explain how the mosaic will or will not damage the existing masonry.

- ✓ There is no damage to the masonry. The repointing and Laticrete installations will provide an adequate seal from water damage.

What would happen if the mosaic is ever removed and what would the state of the masonry would be at that time?

- ✓ In the event of vandalism, the mosaic is easily repaired by replacing the damaged area with new tiles. The firm that creates the mosaic, Artaic, is in Boston and maintains the files for the mosaic.
- ✓ Residents of the abutting building that host the mosaic suggested that the mosaic be installed onto their building (as opposed to being a free-standing installation) and provided a generous donation to support the mosaic purchase and installation.
- ✓ Thus, the mosaic is a permanent fixture.

